

NOBLE ENERGY INC.
IMOGENE 2
NENE 14-6N-65W
500 FNL & 2130 FEL
WELD COUNTY, CO
Wattenberg
CURRENT WELLBORE SCHEMATIC
with PROPOSED P&A
7/20/2016

API: 05-123-20117
 COGCC #

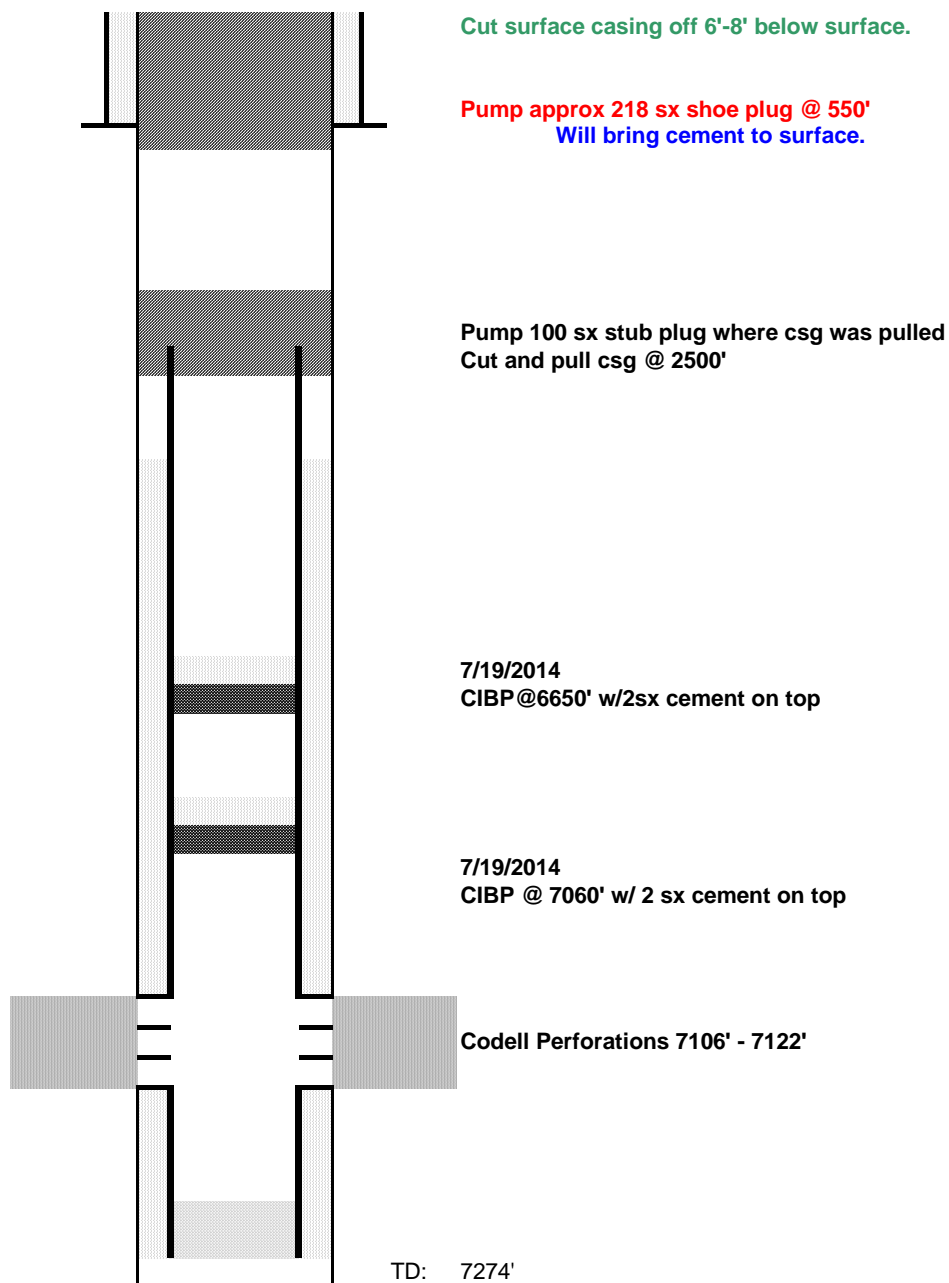
GL Elev: 4765'
 KB Elev: 4775'

Spud Date: 11/7/2000

Surface Casing :
 8 5/8" 24#, grade? @349'
 Cement: 245 sx
 TOC: Surface

TOC @ 3150'
Nio top @ 6791'

Production Casing :
 4 1/2" 11.60#, grade? @7267'
 Cement: 425 sx
 TD: 11/6/2001



TD: 7274'