



Photo 1. View from the dry hole marker facing northward.



Photo 2. View from the beginning of the vegetation transect within the project disturbance facing northwestward. Desirable vegetation identified within the transect is largely smooth brome (*Bromus inermis*) and western wheatgrass (*Pascopyrum smithii*). Common weeds include cheatgrass (*Bromus tectorum*) and kochia (*Kochia scoparia*).





Photo 3. Birdseye view of vegetation at the midpoint of the vegetation transect within the project disturbance.



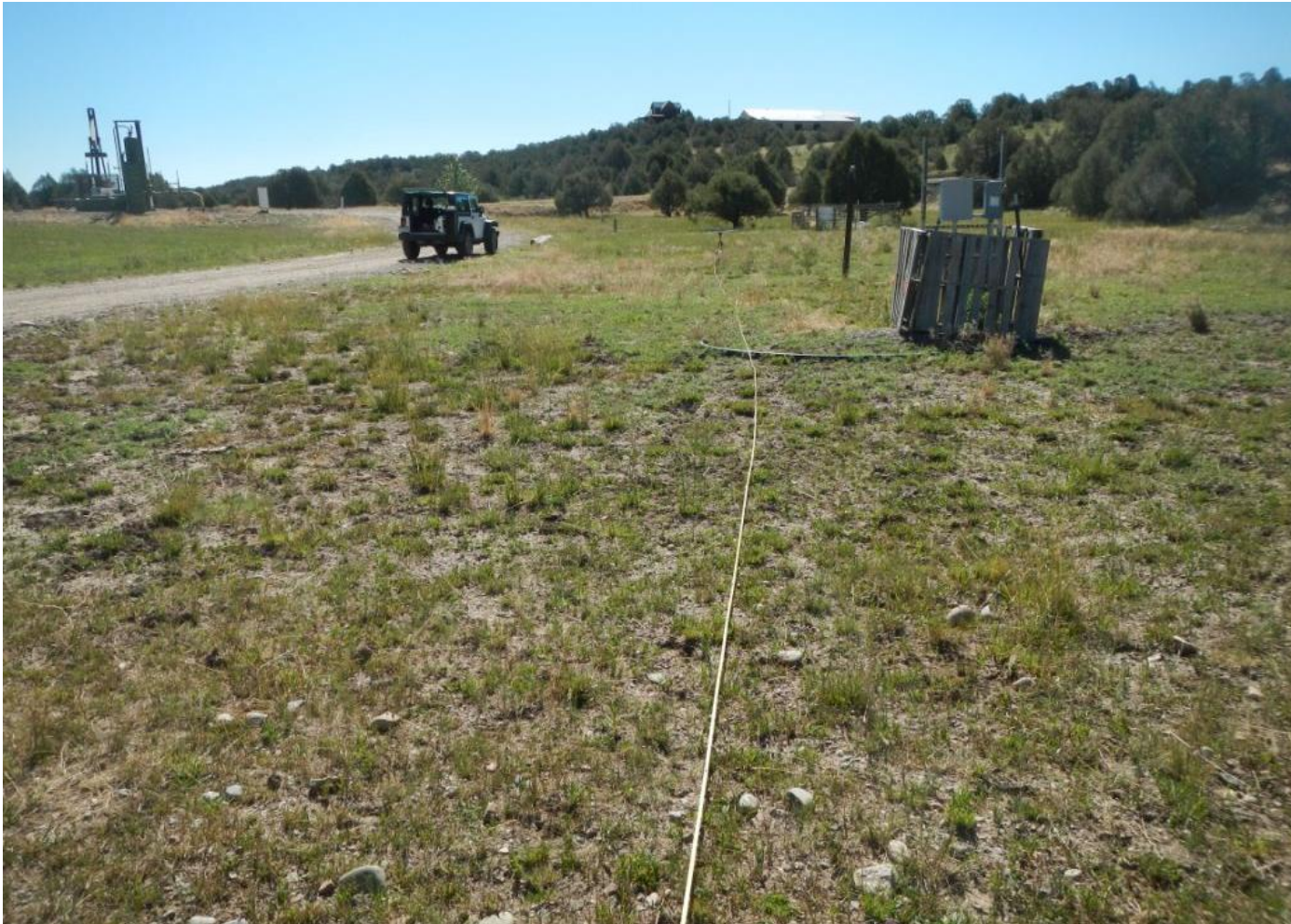


Photo 4. View of the end of the vegetation transect within the project disturbance facing southeastward.





Photo 5. View of the beginning of the reference area transect, outside of the project disturbance facing westward. Desirable vegetation along this transect is largely comprised of western wheatgrass, bluegrass (*Poa* sp.), and orchardgrass (*Dactylis glomerata*). Undesirable species include narrowleaf plantain (*Plantago lanceolata*) and black medic (*Medicago lupulina*).





Photo 6. Birdseye view of vegetation at the midpoint along the reference area transect, outside of the project disturbance.





Photo 7. View of the end of the reference area transect, outside of the project disturbance facing eastward.