

<<< Fold Here >>>

Comments



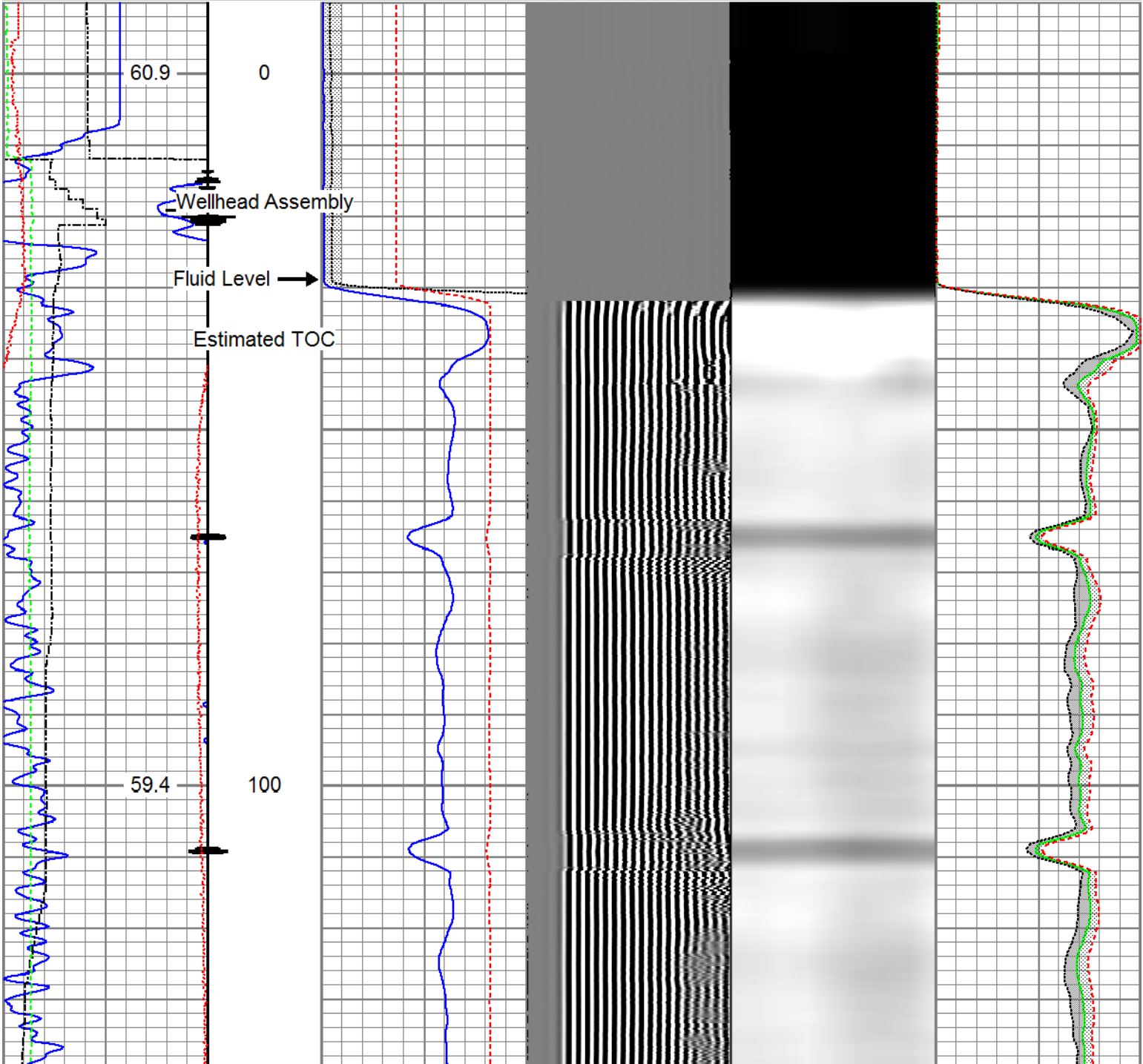
**RELIANCE**  
OILFIELD SERVICES

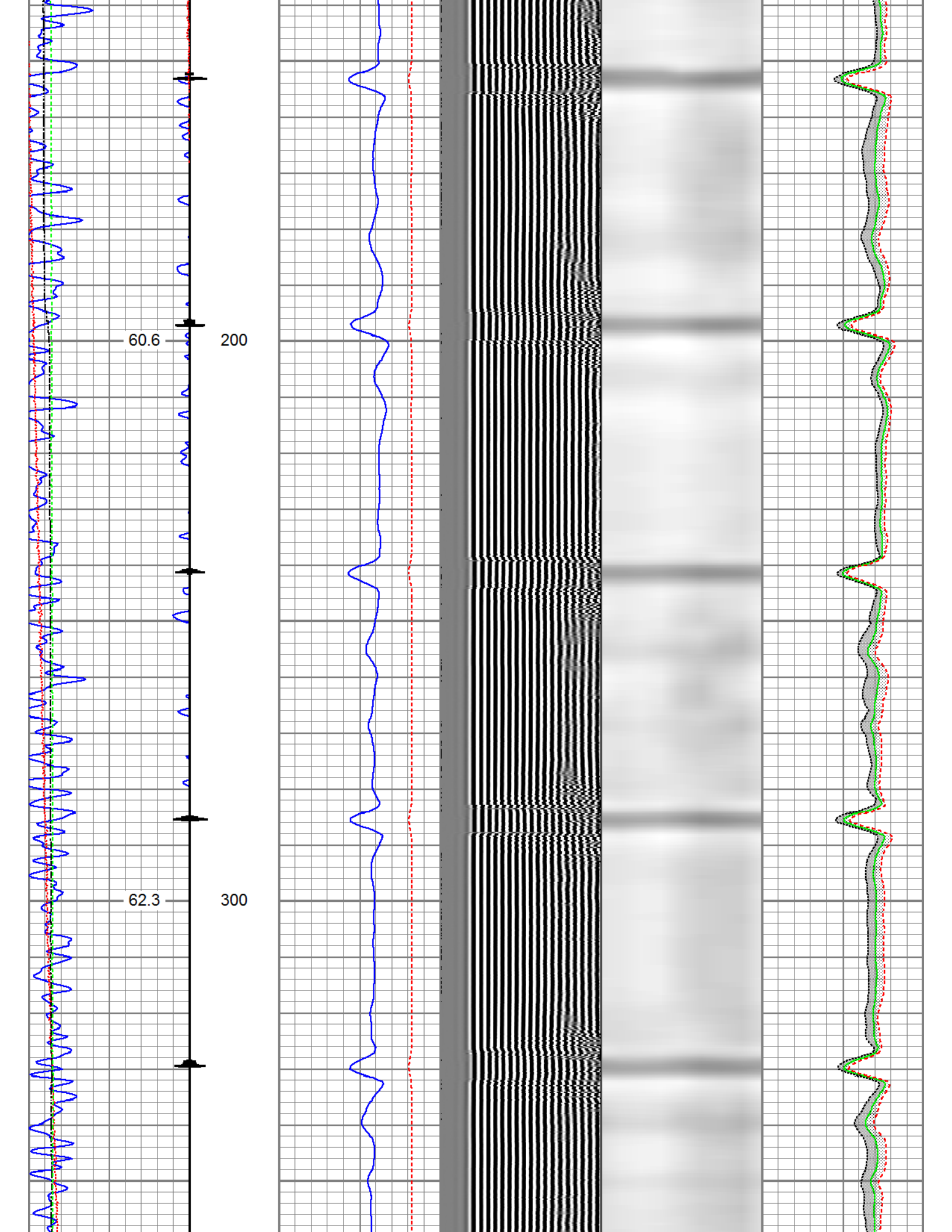
## Main Pass

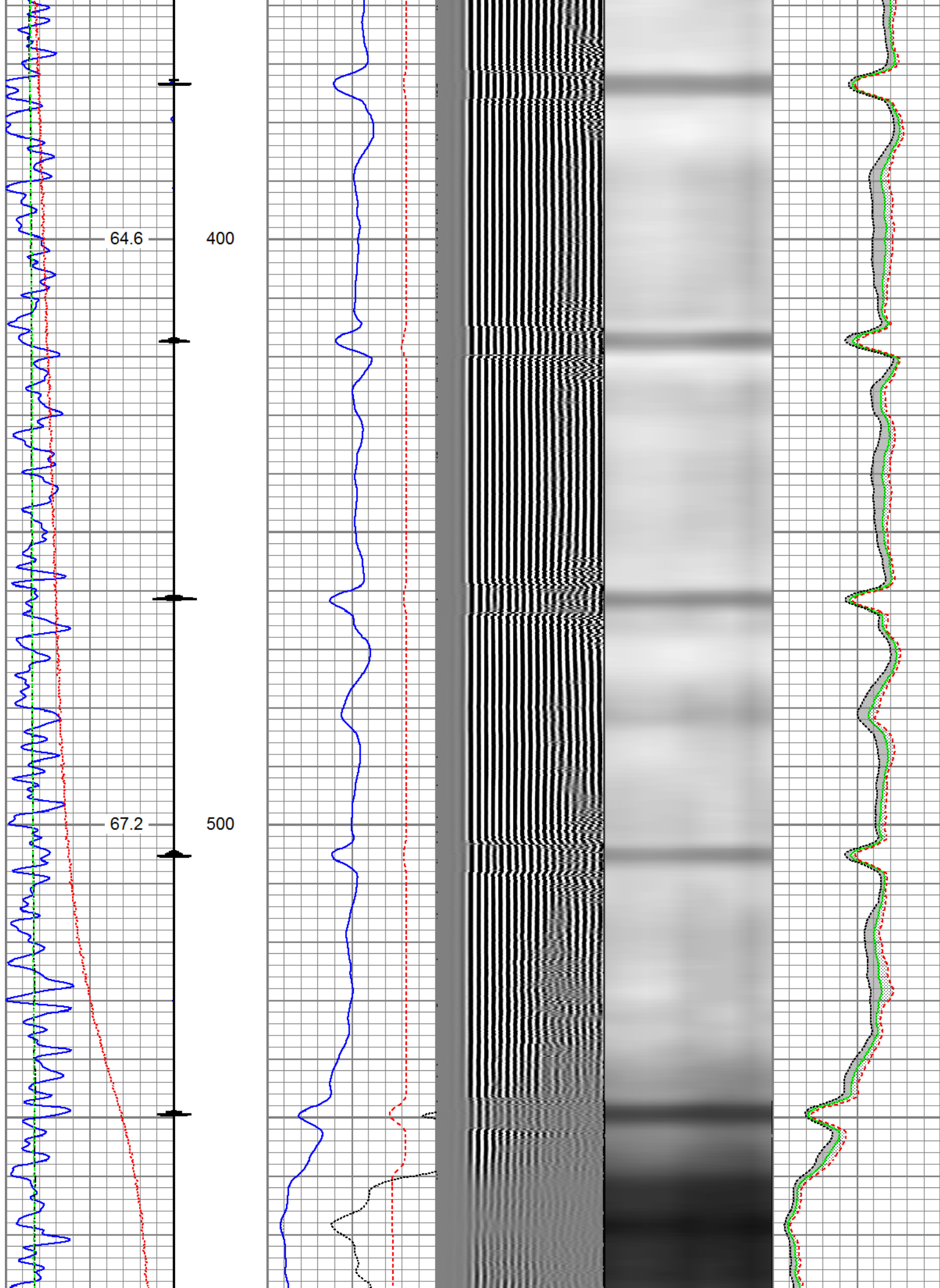
Recorded with 0 PSI Surface Induced Pressure

Database File	0512329551_anadarko_newby 22-33_06-23-16_rbl_w8\processed_0512329551_anadarko_newby 2
Dataset Pathname	Main.2
Presentation Format	ros_radrii_vert
Dataset Creation	Fri Jun 24 16:33:48 2016
Charted by	Depth in Feet scaled 1:240

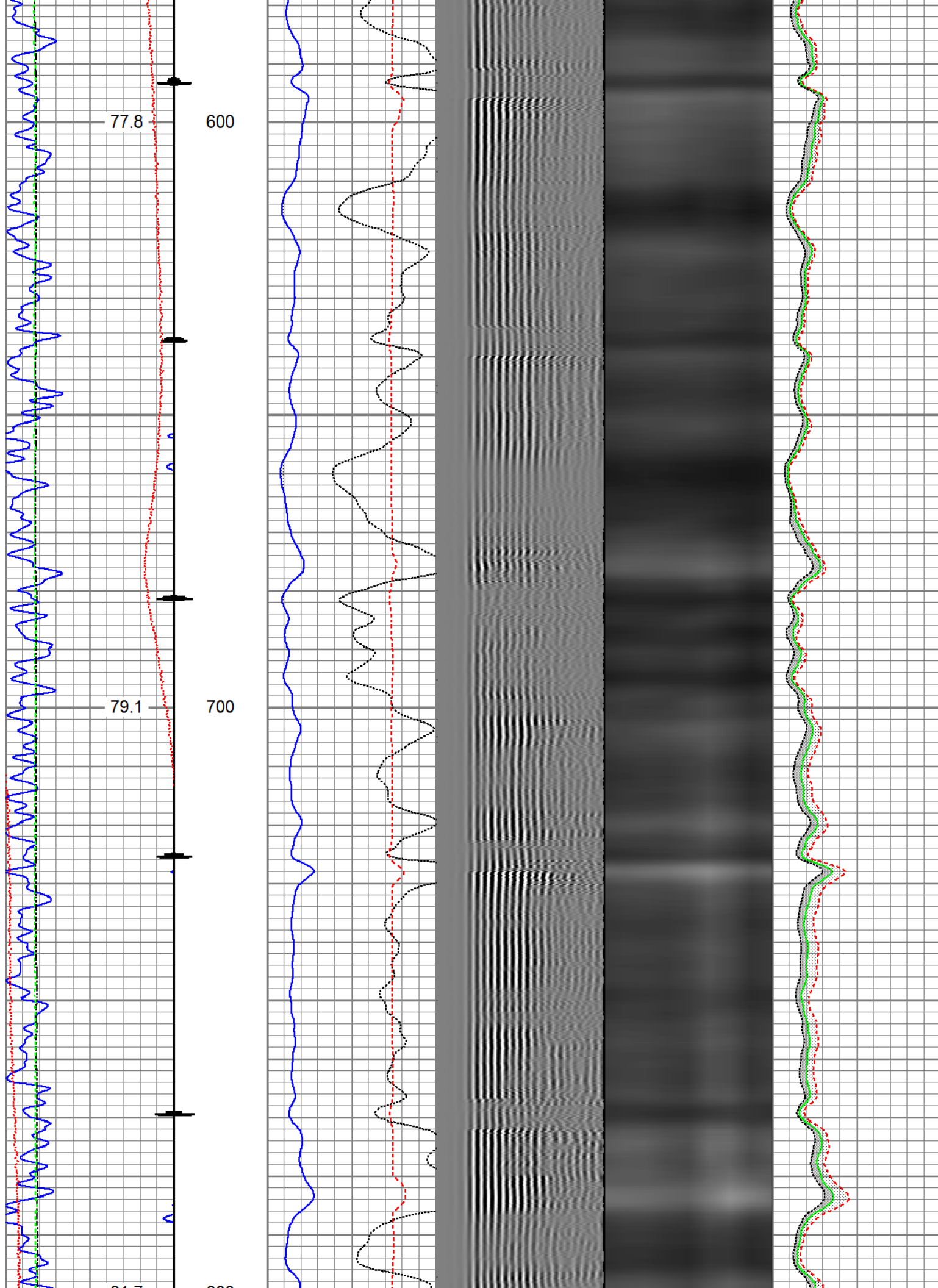
Gamma Ray	3' Amplitude	5' Variable Density Log	Sector Map	Average Amplitude
30 (GAPI) 130	0 (mV) 100	200 1200		0 100
Casing Collar Locator	3' Amplitude x 5			Minimum Amplitude
	0 (mV) 20			0 100
Temperature	3' Travel Time			Maximum Amplitude
0 (degF) 20	650 (usec) 150			0 100
Line Speed				
-150 (ft/min) 150				
Line Tension				
0 (lb) 2000				

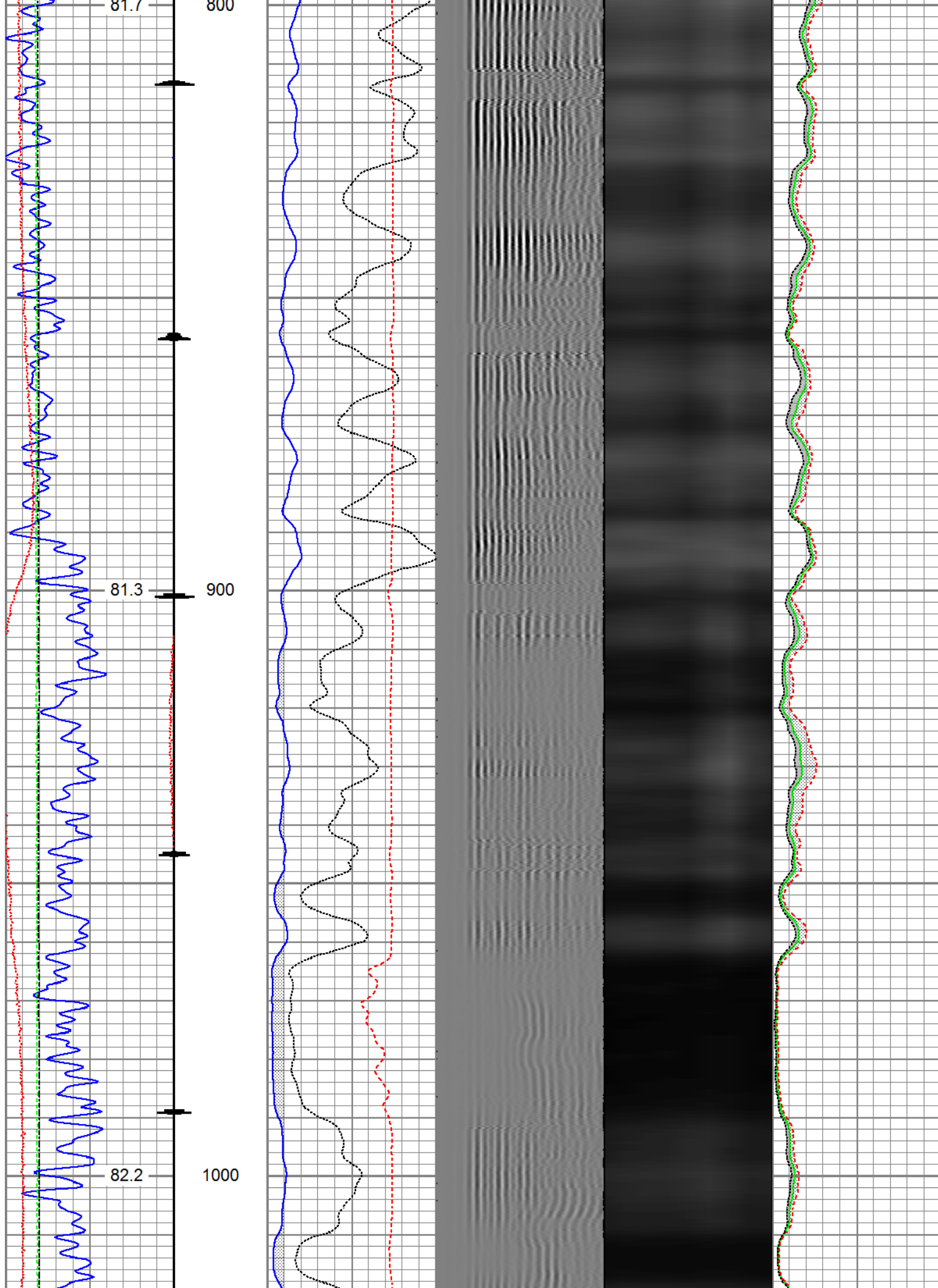


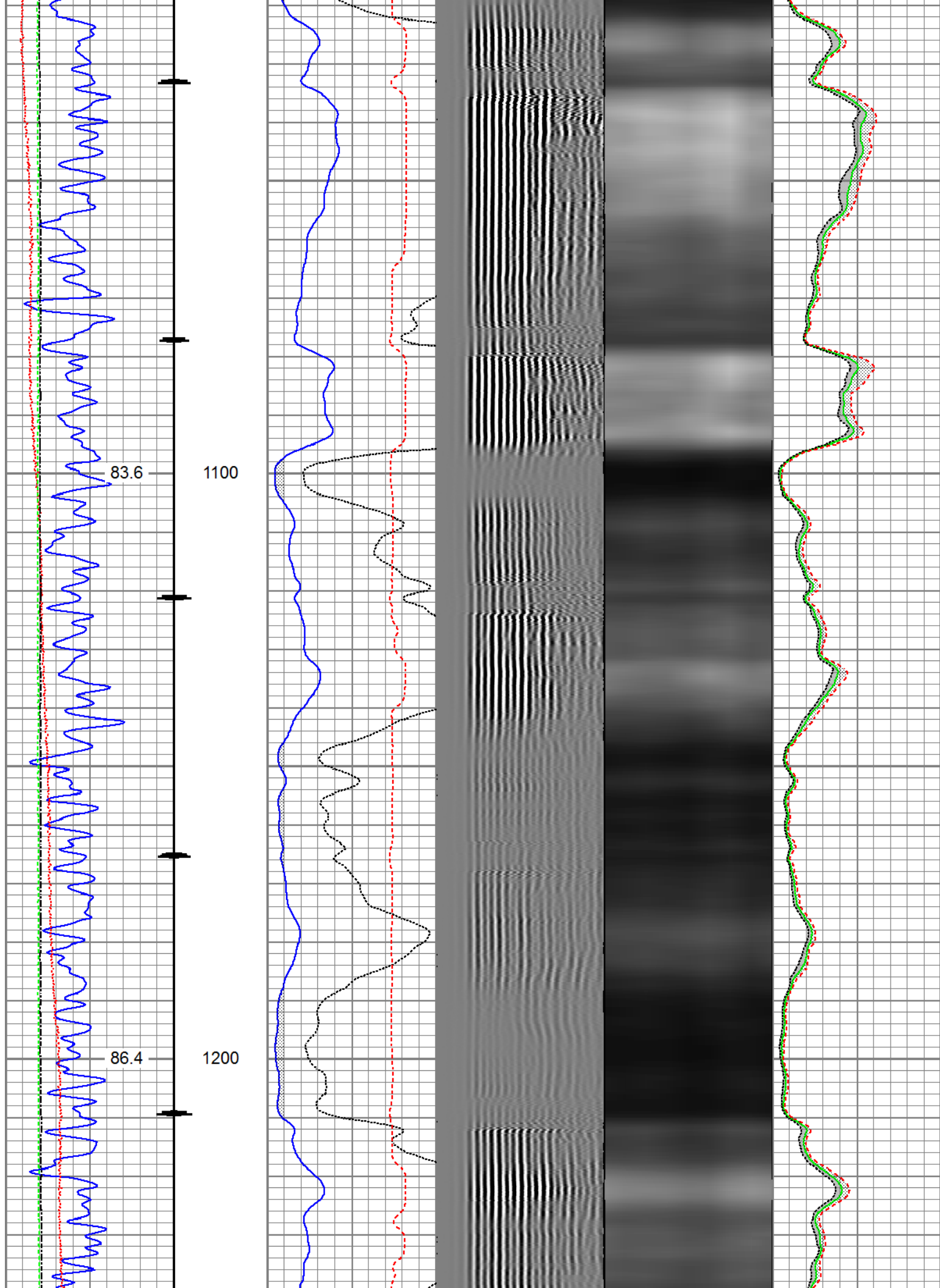


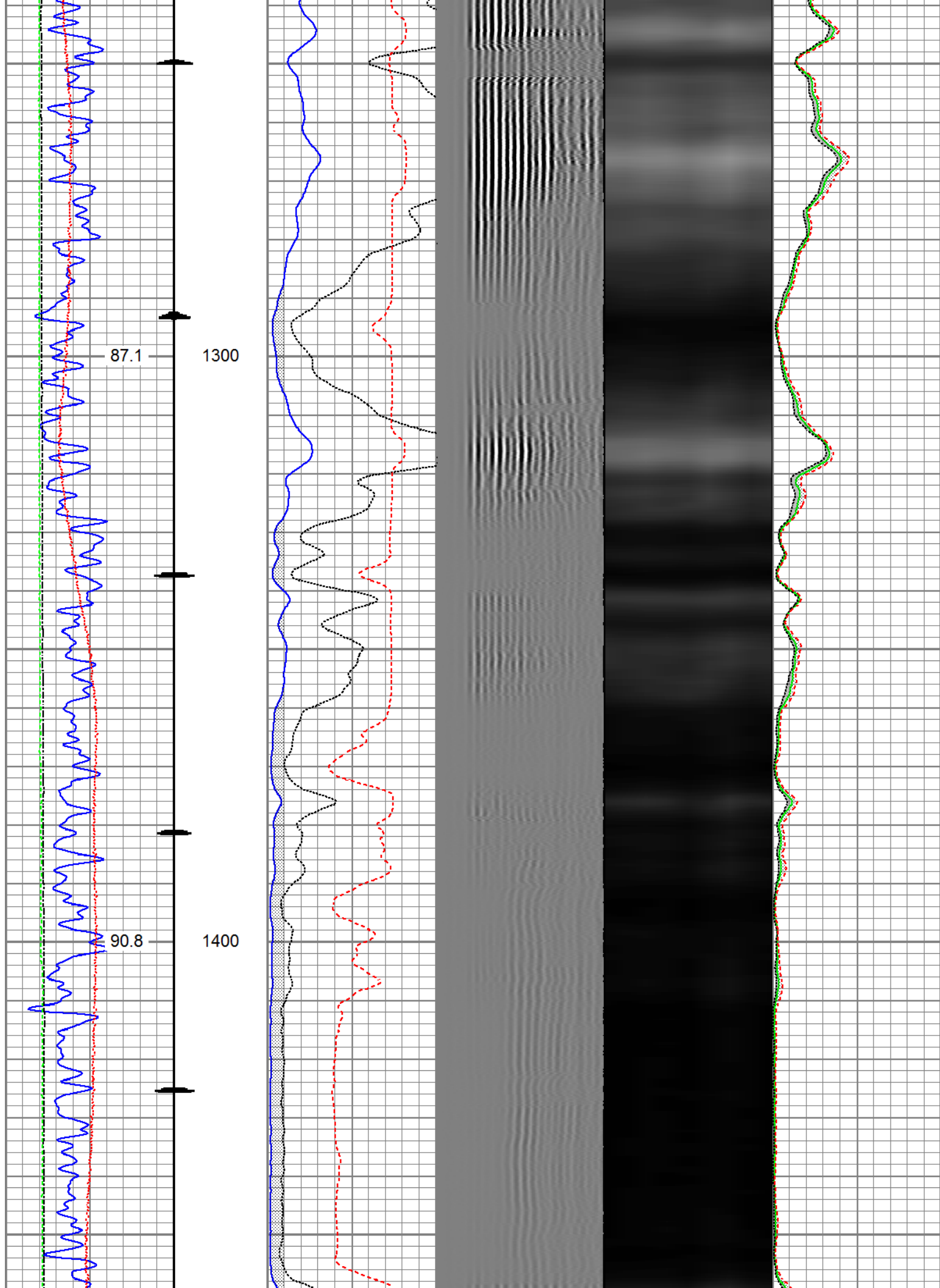




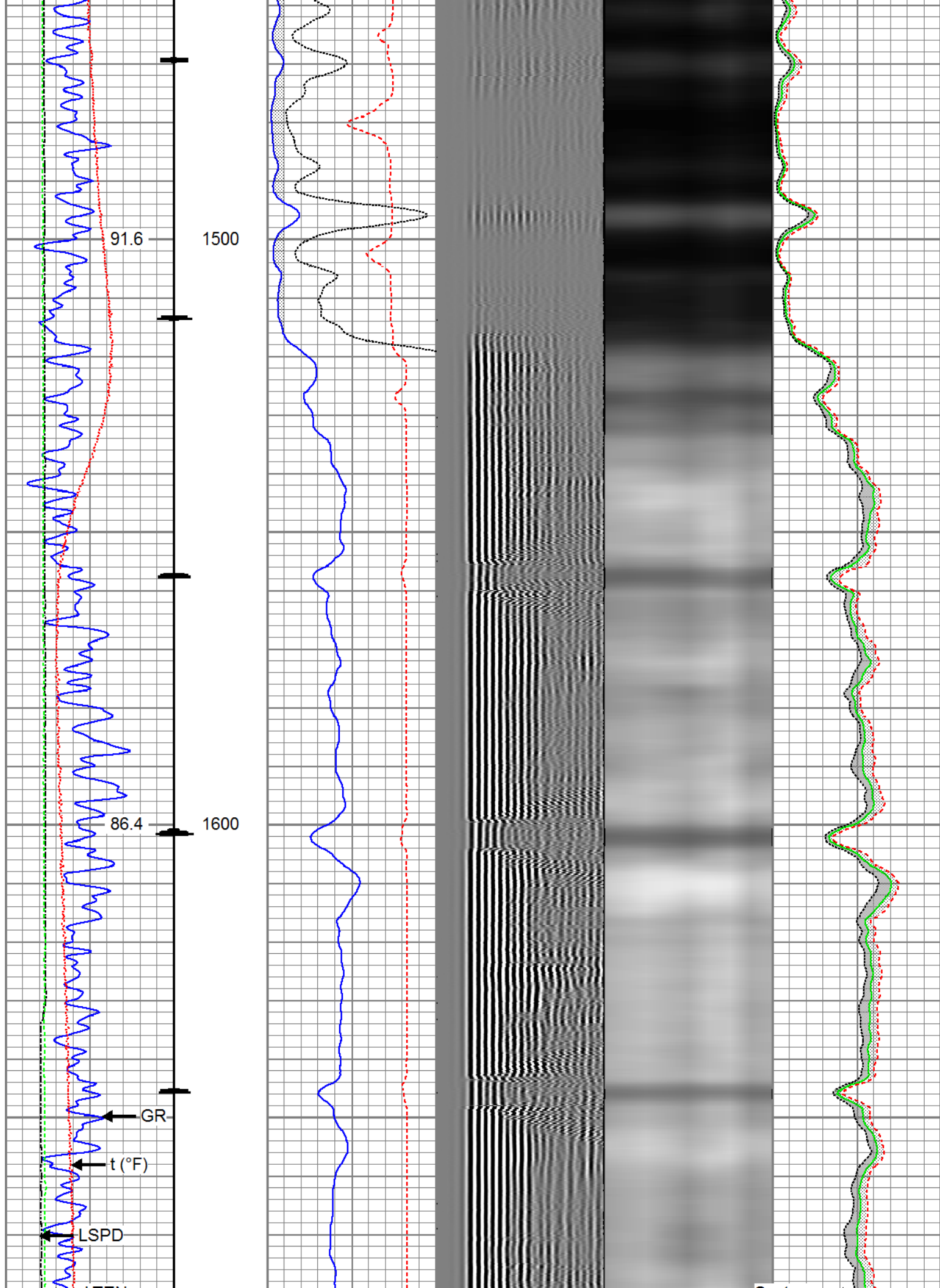


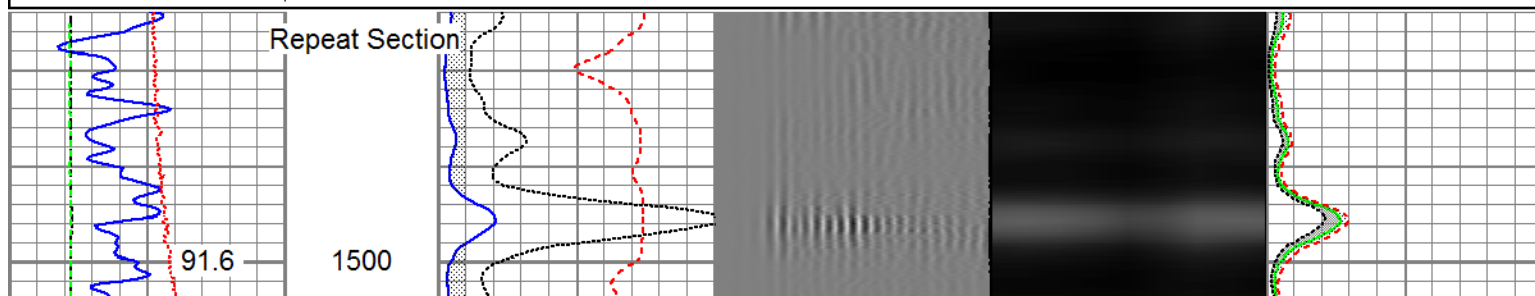
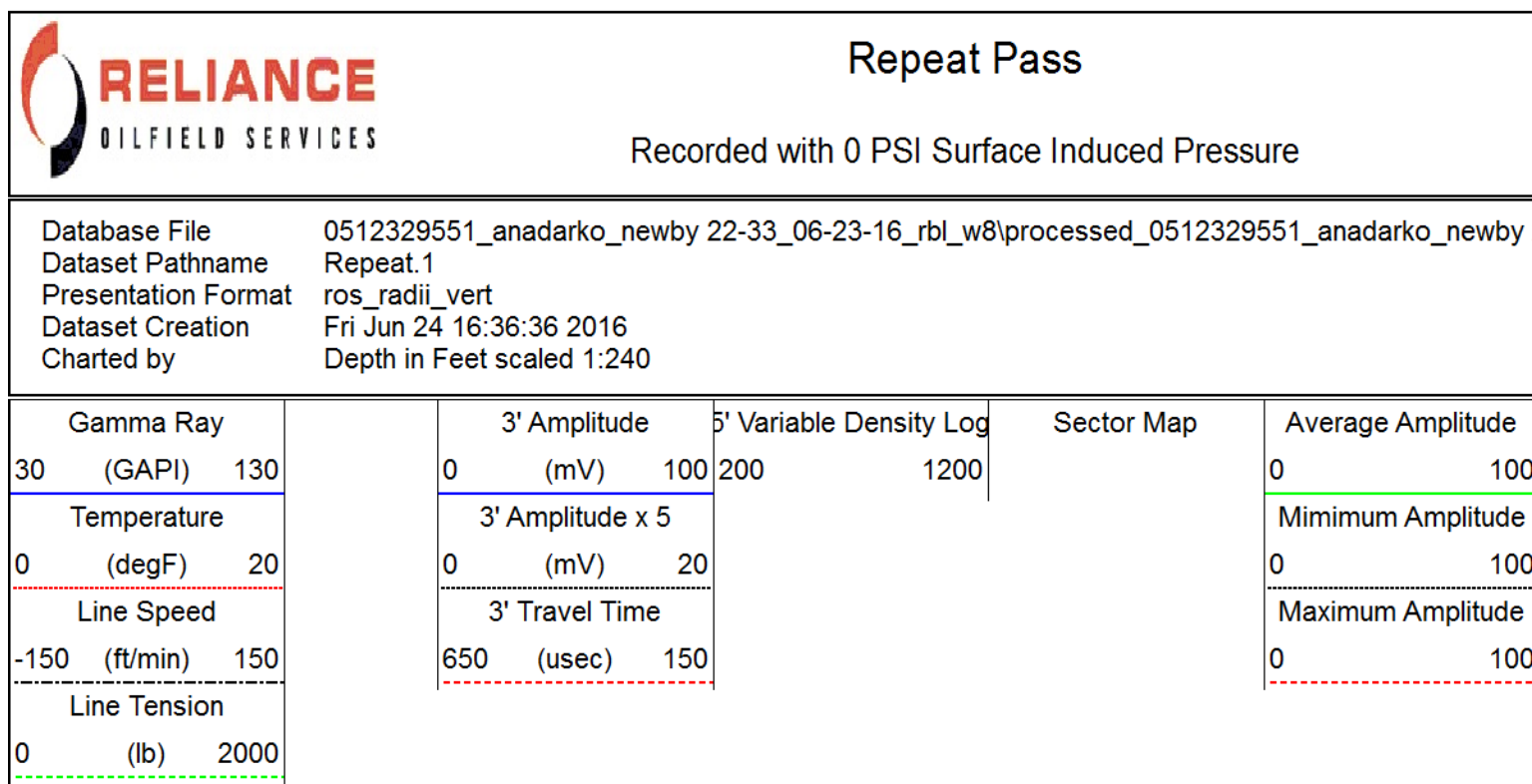
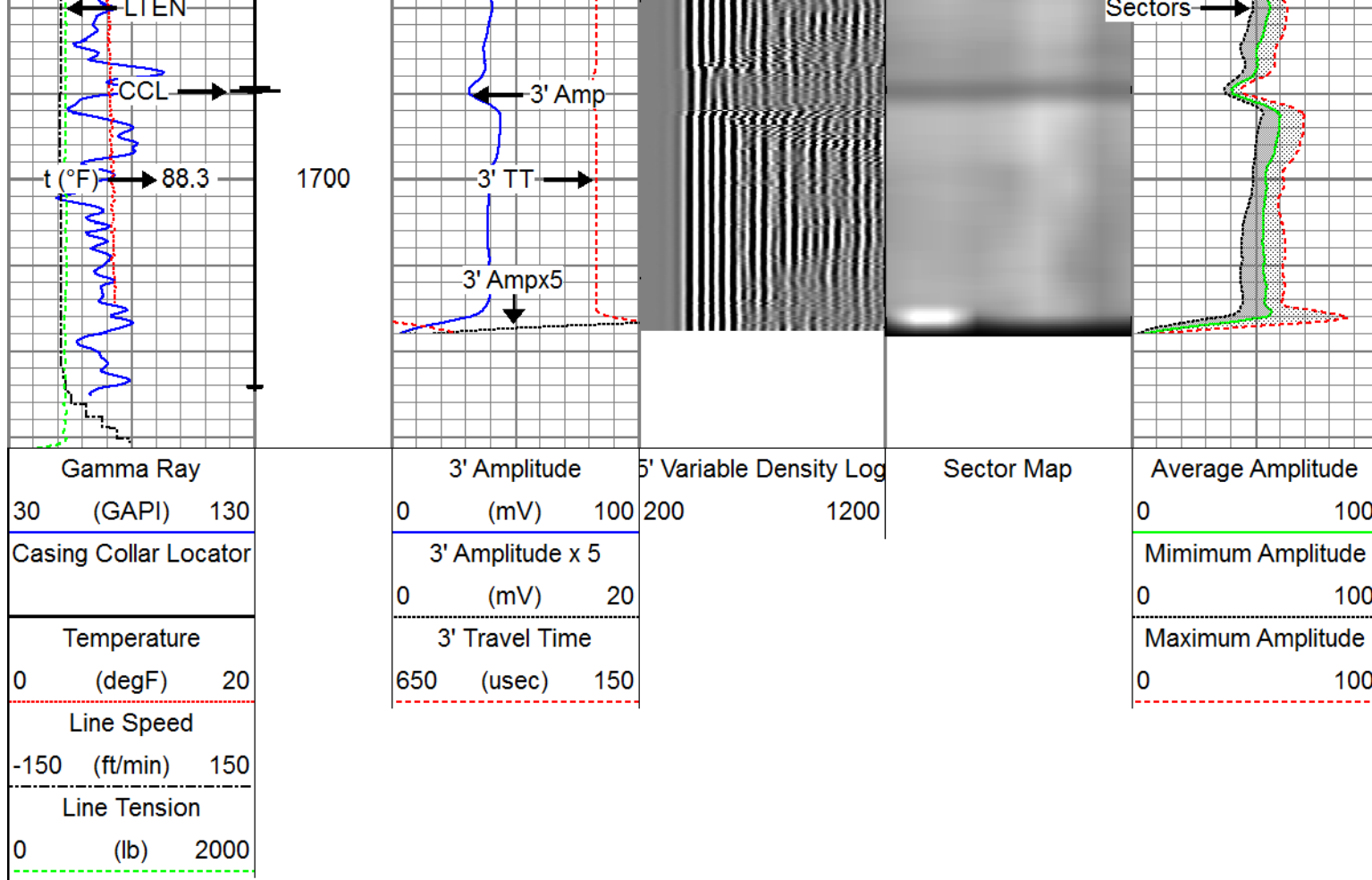


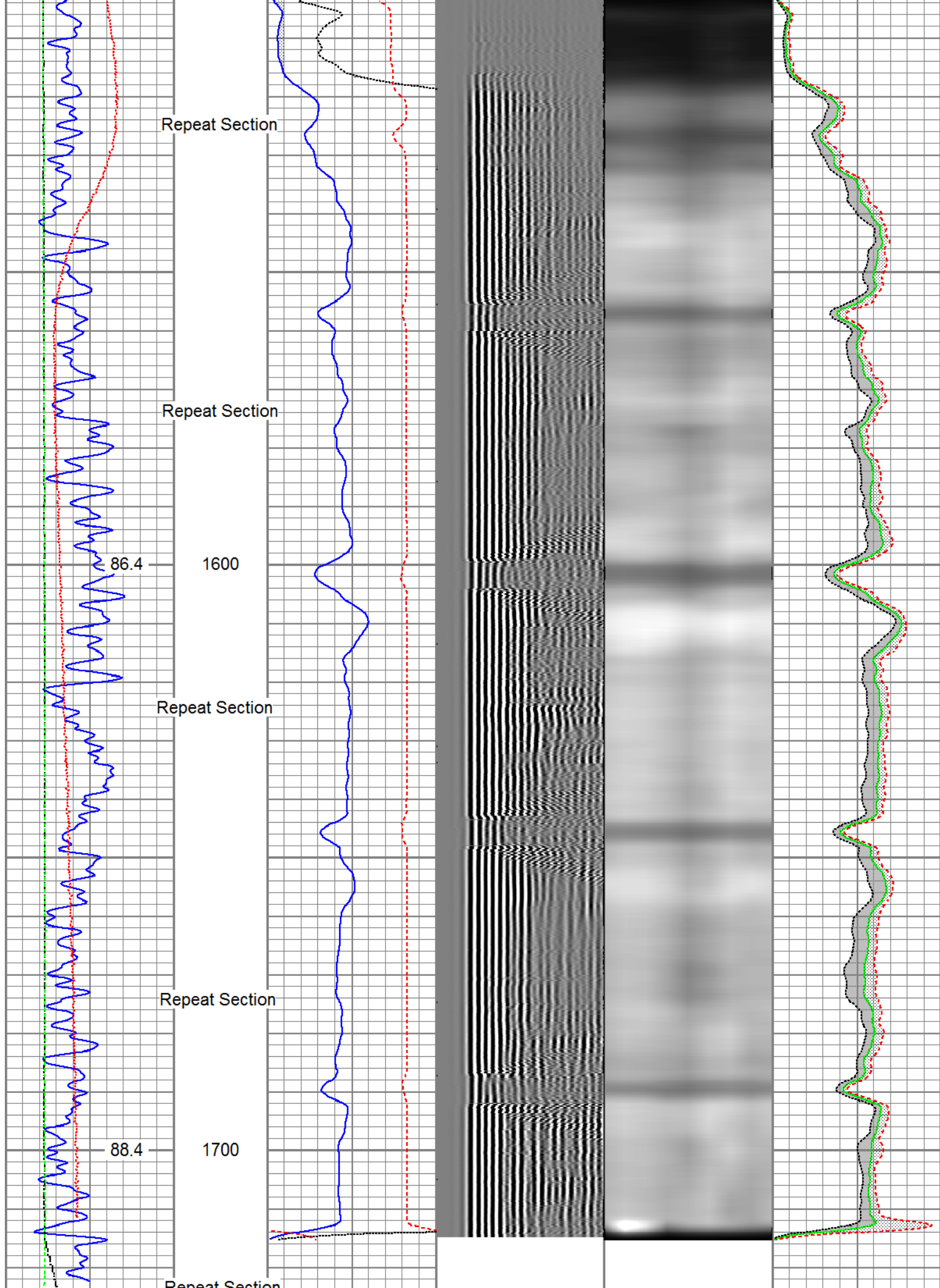




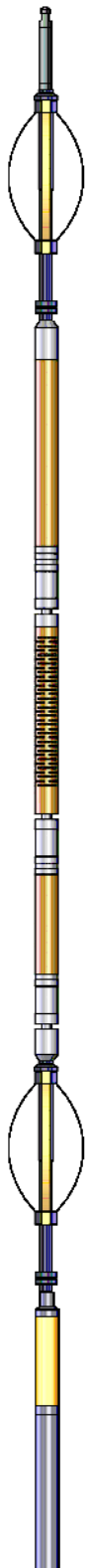
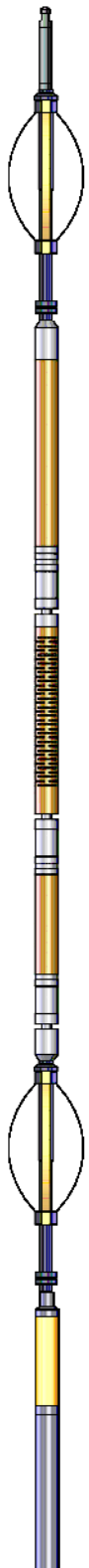




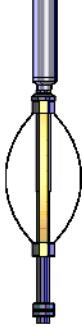




Gamma Ray			3' Amplitude			5' Variable Density Log			Sector Map			Average Amplitude		
30	(GAPI)	130	0	(mV)	100	200		1200				0		100
Temperature			3' Amplitude x 5									Minimum Amplitude		
0	(degF)	20	0	(mV)	20							0		100
Line Speed			3' Travel Time									Maximum Amplitude		
-150	(ft/min)	150	650	(usec)	150							0		100
Line Tension														
0	(lb)	2000												

Sensor	Offset (ft)	Schematic	Description	Length (ft)	O.D. (in)	Weight (lb)
Temp	16.72		Titan_Electric_Cable_Heads-Titan_1-11/16" 1.03 Electric Cable Head with 1" Fishing Neck		1.69	5.40
			Probe_ELine_BowSpring_Centralizer-P_EB2.8875 Probe 2-3/4" Electric Inline Bowspring Centralizer	2.75	20.00	
			Probe_RADII-C-P_RBT_2750 (FW1302-0029.19 Probe 2-3/4" Sector Cement Bond Tool with Temperature Probe	2.75	105.00	
			Probe_ELine_BowSpring_Centralizer-P_EB2.8875 Probe 2-3/4" Electric Inline Bowspring Centralizer	2.75	20.00	
			Probe_GR_CCL-P_CGR_2750_S (FW1307.54) Probe 2-3/4" Digital CCL / Gamma Ray Combined	2.75	55.00	
			DCCL	6.51		
CCL	6.51					
WVFS8	14.55					
WVFS7	14.55					
WVFS6	14.55					
WVFS5	14.55					
WVFS4	14.55					
WVFS3	14.55					
WVFS2	14.55					
WVFS1	14.55					
WVFCAL	14.55					
WVF3FT	14.55					
WVF5FT	13.55					
HeadVolt	10.30					



GR	3.77		Probe_ELine_BowSpring_Centralizer-P_EB\$2.8875 Probe 2-3/4" Electric Inline Bowspring Centralizer	2.75	20.00
Dataset: processed_0512329551_anadarko_newby 22-33_06-23-16_rbl_w8.db: field/well/run1/Main.2 Total length: 23.40 ft Total weight: 225.40 lb O.D.: 2.75 in					

Calibration Report	
Database File	c:\programdata\warrior\data\0512329551_anadarko_newby 22-33_06-23-16_rbl_w8\processed_05123
Dataset Pathname	Main.2
Dataset Creation	Fri Jun 24 16:33:48 2016

Gamma Ray Calibration Report		
Serial Number:	FW1307-038	
Tool Model:	P_CGR_2750_S	
Performed:	Sat Feb 06 11:43:09 2016	
Calibrator Value:	1.0	GAPI
Background Reading:	0.0	cps
Calibrator Reading:	1.6	cps
Sensitivity:	0.6061	GAPI/cps

Segmented Cement Bond Log Calibration Report		
Serial Number:	FW1302-002	
Tool Model:	P_RBT_2750	
Calibration Casing Diameter:	4.500	in
Calibration Depth:	15.000	ft

Master Calibration, performed (Derived):						
	Raw (v)		Calibrated (mv)		Results	
	Zero	Cal	Zero	Cal	Gain	Offset
3'	0.001	0.487	0.800	81.196	165.411	0.598
CAL	0.723	0.610				
5'	0.001	0.418	0.800	81.196	193.116	0.555
SUM						
S1	0.001	0.501	0.000	100.000	199.894	-0.129
S2	0.003	0.476	0.000	100.000	211.379	-0.585
S3	0.001	0.461	0.000	100.000	217.671	-0.266
S4	0.001	0.473	0.000	100.000	212.082	-0.312
S5	0.001	0.536	0.000	100.000	186.962	-0.261
S6	0.002	0.640	0.000	100.000	156.769	-0.258
S7	0.001	0.664	0.000	100.000	150.843	-0.180
S8	0.002	0.597	0.000	100.000	167.890	-0.293

Internal Reference Calibration, performed (Not Performed):
--

	Raw (v)		Calibrated (v)		Results	
	Zero	Cal	Zero	Cal	Gain	Offset
CAL	0.000	0.000	0.723	0.610	1.000	0.000

Air Zero Calibration, performed Thu Jun 23 07:04:52 2016:

	Raw (v)		Calibrated (v)		Results	
	Zero		Zero		Offset	
3'	0.000		0.000		0.000	
5'	0.000		0.000		0.000	
SUM						
S1	0.000		0.000		0.000	
S2	0.000		0.000		0.000	
S3	0.000		0.000		0.000	
S4	0.000		0.000		0.000	
S5	0.000		0.000		0.000	
S6	0.000		0.000		0.000	
S7	0.000		0.000		0.000	
S8	0.000		0.000		0.000	



Company	Kerr-McGee Oil & Gas Onshore, L.P.
Well	Newby 22-33
Field	Wattenberg
County	Weld
State	Colorado