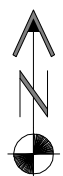
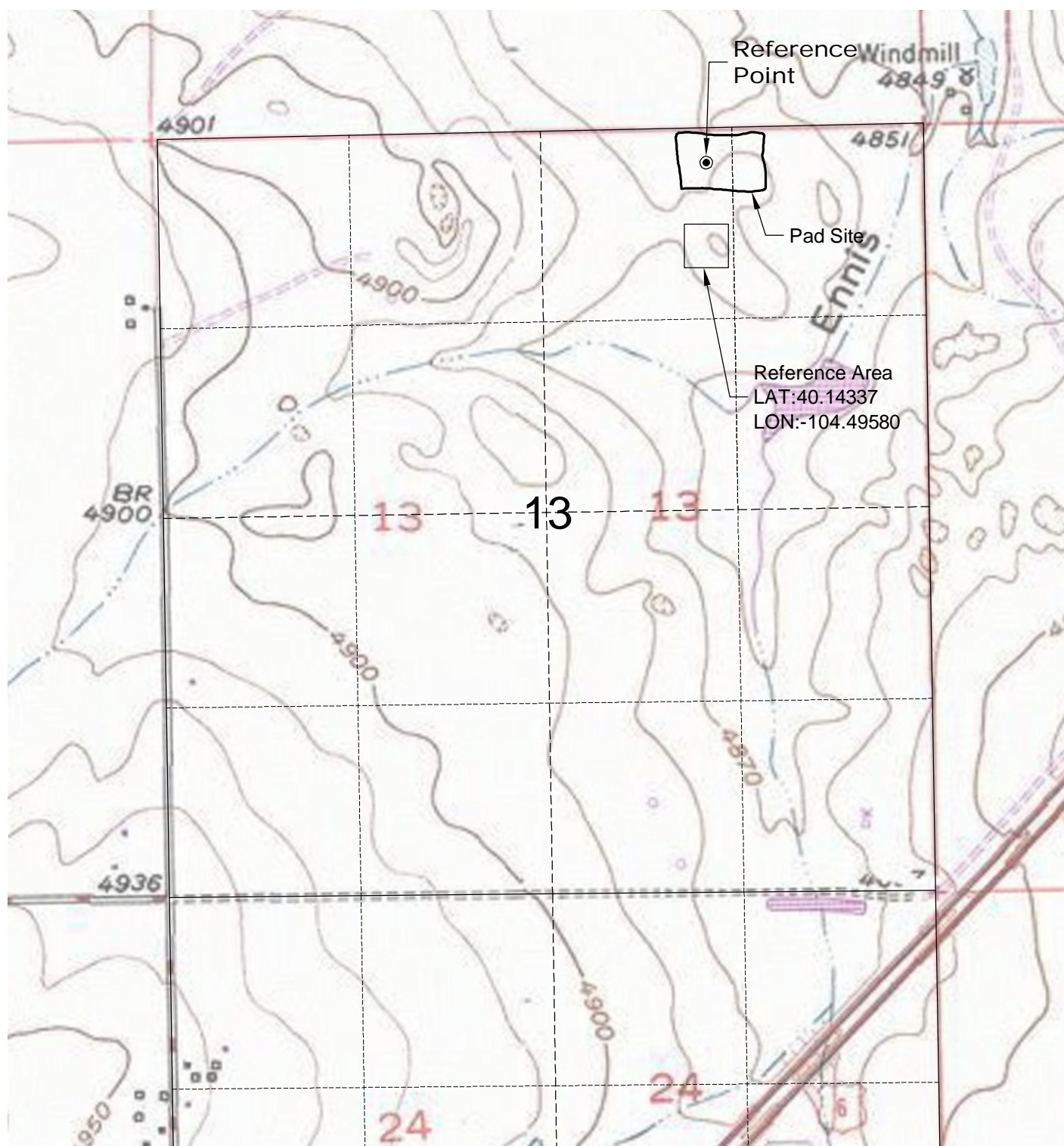
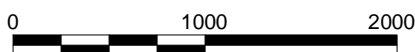


DWG: G:\GEOSURV\WeldzNorth\Red Hawk Petroleum\Wellplots\Gerkin 9H\Gerkin 9H F2A.dwg
USER: SHH
DATE: Oct 14, 2014 3:28pm



North



Graphic Scale in Feet
1" = 1000'



LAND SURVEYING AND MAPPING
LAFAYETTE - WINTER PARK
Ph 303 666 0379 Fx 303 665 6320

RED HAWK PETROLEUM LLC
L.E. GERKIN 9H PAD

NW1/4 NE1/4 SECTION 13 T2N R64W
6th PM WELD COUNTY COLORADO

10/14/14