



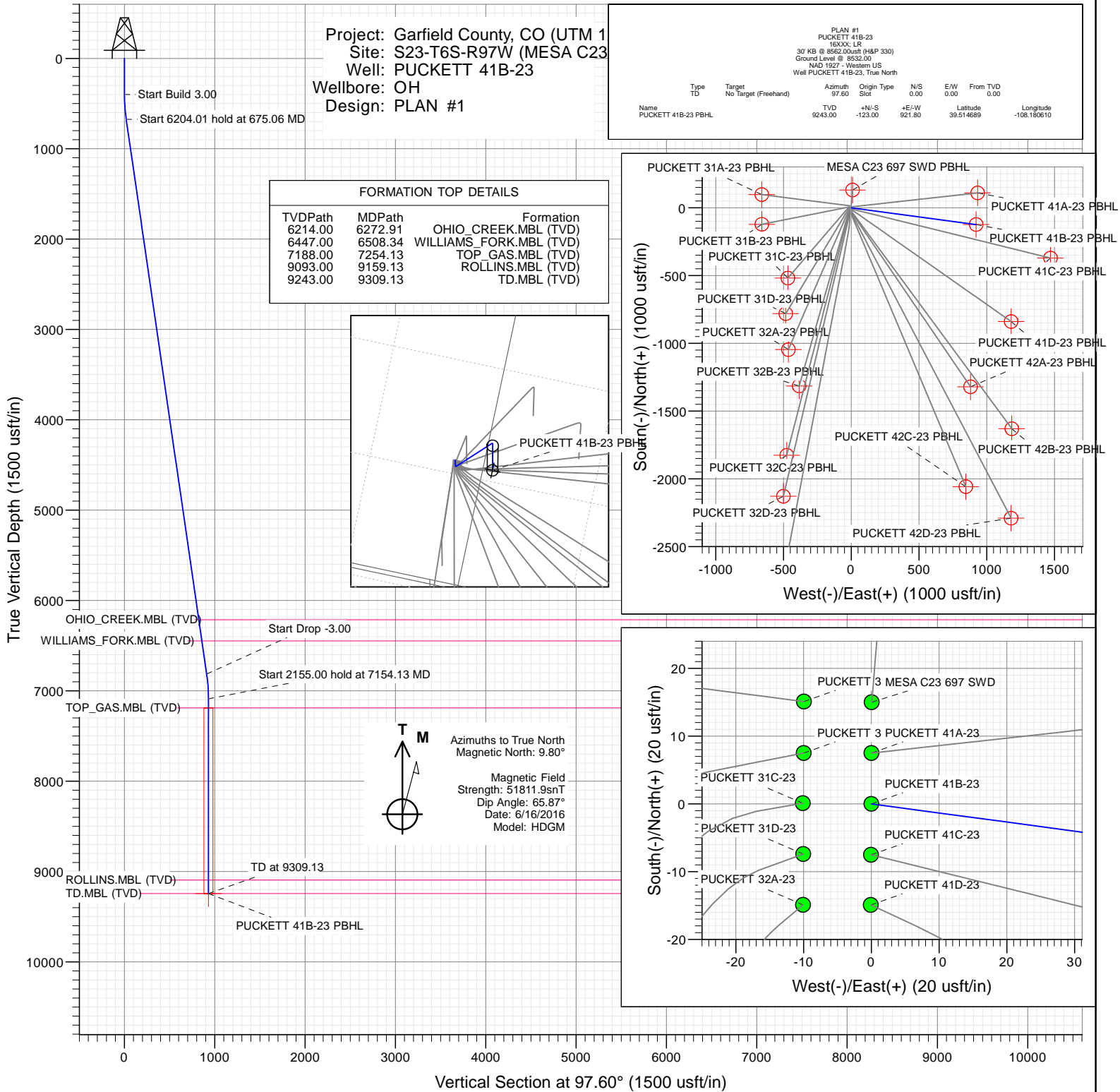
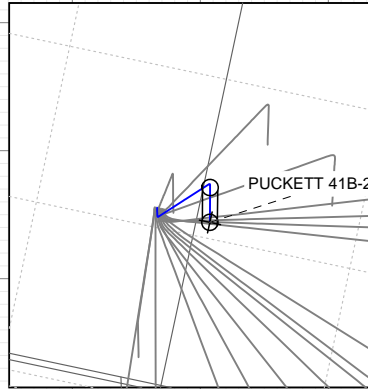
SECTION DETAILS

Sec	MD	Inc	Azi	TVD	+N/-S	+E/-W	Dleg	TFace	VSect	Target
1	0.00	0.00	0.00	0.00	0.00	0.00	0.00	0.00	0.00	
2	400.00	0.00	0.00	400.00	0.00	0.00	0.00	0.00	0.00	
3	675.06	8.25	97.60	674.11	-2.62	19.60	3.00	97.60	19.77	
4	6879.07	8.25	97.60	6813.89	-120.38	902.20	0.00	0.00	910.20	
5	7154.13	0.00	0.00	7088.00	-123.00	921.80	3.00	180.00	929.97	
6	9309.13	0.00	0.00	9243.00	-123.00	921.80	0.00	0.00	929.97	PUCKETT 41B-23 PBHL

Project: Garfield County, CO (UTM 1
Site: S23-T6S-R97W (MESA C23
Well: PUCKETT 41B-23
Wellbore: OH
Design: PLAN #1

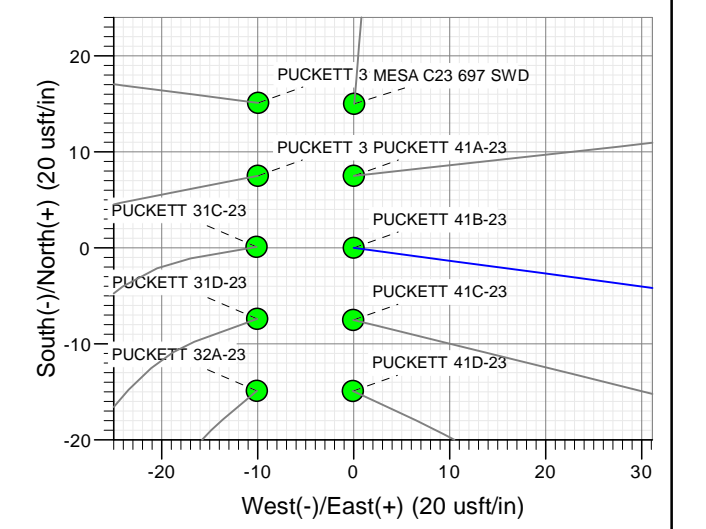
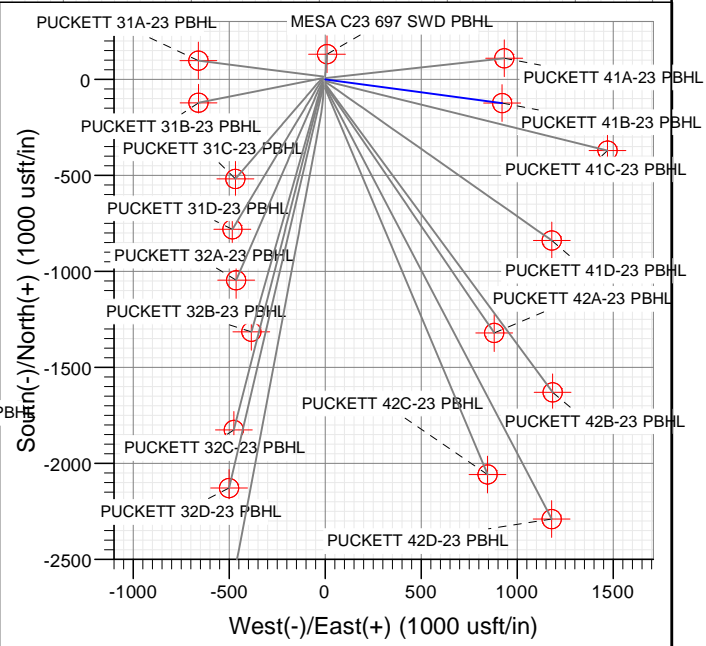
FORMATION TOP DETAILS

TVDPath	MDPath	Formation
6214.00	6272.91	OHIO_CREEK.MBL (TVD)
6447.00	6508.34	WILLIAMS_FORK.MBL (TVD)
7188.00	7254.13	TOP_GAS.MBL (TVD)
9093.00	9159.13	ROLLINS.MBL (TVD)
9243.00	9309.13	TD.MBL (TVD)



PLAN #1
PUCKETT 41B-23
18X30X LR
30 KB @ 8562.00usft (H&P 330)
Ground Level @ 8532.00
NAD 1927 - Western US
Well PUCKETT 41B-23, True North

Type	Target	Target	Target	Target	Target	Target	Target	Target	Target
TD	No Target	No Target	No Target	No Target	No Target	No Target	No Target	No Target	No Target
Name	TD	+N/-S	+E/-W	Latitude	Longitude				
PUCKETT 41B-23 PBHL	9243.00	-123.00	921.80	39.514689	-108.180610				



WELL DETAILS: PUCKETT 41B-23

+N/-S	+E/-W	Northing	Ground Level:	8532.00	Latitude	Longitude
0.00	0.00	14361882.10	Easting	2434707.80	39.515026	-108.183876

CATHEDRAL



Cathedral Energy Services

Planning Report

Database:	USA EDM 5000 Multi Users DB	Local Co-ordinate Reference:	Well PUCKETT 41B-23
Company:	Caerus Oil & Gas	TVD Reference:	30' KB @ 8562.00usft (H&P 330)
Project:	Garfield County, CO (UTM 12N)	MD Reference:	30' KB @ 8562.00usft (H&P 330)
Site:	S23-T6S-R97W (MESA C23)	North Reference:	True
Well:	PUCKETT 41B-23	Survey Calculation Method:	Minimum Curvature
Wellbore:	OH		
Design:	PLAN #1		

Project	Garfield County, CO (UTM 12N)		
Map System:	Universal Transverse Mercator (US Survey Feet)	System Datum:	Mean Sea Level
Geo Datum:	NAD 1927 - Western US		
Map Zone:	Zone 12N (114 W to 108 W)		

Site		S23-T6S-R97W (MESA C23)			
Site Position:		Northing:	14,361,896.90 usft	Latitude:	39.515068
From:	Map	Easting:	2,434,697.40 usft	Longitude:	-108.183912
Position Uncertainty:	0.00 usft	Slot Radius:	13-3/16"	Grid Convergence:	1.79 °

Well	PUCKETT 41B-23					
Well Position	+N/-S	0.00 usft	Northing:	14,361,882.10 usft	Latitude:	39.515026
	+E/-W	0.00 usft	Easting:	2,434,707.80 usft	Longitude:	-108.183876
Position Uncertainty		0.00 usft	Wellhead Elevation:	0.00 usft	Ground Level:	8,532.00 usft

Wellbore	OH				
Magnetics	Model Name	Sample Date	Declination (°)	Dip Angle (°)	Field Strength (nT)
	HDGM	6/16/2016	9.80	65.87	51,812

Design	PLAN #1			
Audit Notes:				
Version:	Phase:	PLAN	Tie On Depth:	0.00
Vertical Section:	Depth From (TVD) (usft)	+N/-S (usft)	+E/-W (usft)	Direction (°)
	0.00	0.00	0.00	97.60

Plan Sections										
Measured Depth (usft)	Inclination (°)	Azimuth (°)	Vertical Depth (usft)	+N/-S (usft)	+E/-W (usft)	Dogleg Rate (°/100usft)	Build Rate (°/100usft)	Turn Rate (°/100usft)	TFO (°)	Target
0.00	0.00	0.00	0.00	0.00	0.00	0.00	0.00	0.00	0.00	
400.00	0.00	0.00	400.00	0.00	0.00	0.00	0.00	0.00	0.00	
675.06	8.25	97.60	674.11	-2.62	19.60	3.00	3.00	0.00	97.60	
6,879.07	8.25	97.60	6,813.89	-120.38	902.20	0.00	0.00	0.00	0.00	
7,154.13	0.00	0.00	7,088.00	-123.00	921.80	3.00	-3.00	0.00	180.00	
9,309.13	0.00	0.00	9,243.00	-123.00	921.80	0.00	0.00	0.00	0.00	PUCKETT 41B-23 PE

Cathedral Energy Services

Planning Report

Database:	USA EDM 5000 Multi Users DB	Local Co-ordinate Reference:	Well PUCKETT 41B-23
Company:	Caerus Oil & Gas	TVD Reference:	30' KB @ 8562.00usft (H&P 330)
Project:	Garfield County, CO (UTM 12N)	MD Reference:	30' KB @ 8562.00usft (H&P 330)
Site:	S23-T6S-R97W (MESA C23)	North Reference:	True
Well:	PUCKETT 41B-23	Survey Calculation Method:	Minimum Curvature
Wellbore:	OH		
Design:	PLAN #1		

Planned Survey									
Measured Depth (usft)	Inclination (°)	Azimuth (°)	Vertical Depth (usft)	+N/-S (usft)	+E/-W (usft)	Vertical Section (usft)	Dogleg Rate (°/100usft)	Build Rate (°/100u)	Comments / Formations
0.00	0.00	0.00	0.00	0.00	0.00	0.00	0.00	0.00	
100.00	0.00	0.00	100.00	0.00	0.00	0.00	0.00	0.00	
200.00	0.00	0.00	200.00	0.00	0.00	0.00	0.00	0.00	
300.00	0.00	0.00	300.00	0.00	0.00	0.00	0.00	0.00	
400.00	0.00	0.00	400.00	0.00	0.00	0.00	0.00	0.00	
500.00	3.00	97.60	499.95	-0.35	2.59	2.62	3.00	3.00	
600.00	6.00	97.60	599.63	-1.38	10.37	10.46	3.00	3.00	
675.06	8.25	97.60	674.11	-2.62	19.60	19.77	3.00	3.00	
700.00	8.25	97.60	698.79	-3.09	23.15	23.35	0.00	0.00	
800.00	8.25	97.60	797.76	-4.99	37.37	37.70	0.00	0.00	
900.00	8.25	97.60	896.72	-6.89	51.60	52.06	0.00	0.00	
1,000.00	8.25	97.60	995.69	-8.78	65.83	66.41	0.00	0.00	
1,100.00	8.25	97.60	1,094.65	-10.68	80.05	80.76	0.00	0.00	
1,200.00	8.25	97.60	1,193.62	-12.58	94.28	95.11	0.00	0.00	
1,300.00	8.25	97.60	1,292.58	-14.48	108.51	109.47	0.00	0.00	
1,400.00	8.25	97.60	1,391.54	-16.38	122.73	123.82	0.00	0.00	
1,500.00	8.25	97.60	1,490.51	-18.27	136.96	138.17	0.00	0.00	
1,600.00	8.25	97.60	1,589.47	-20.17	151.18	152.52	0.00	0.00	
1,700.00	8.25	97.60	1,688.44	-22.07	165.41	166.88	0.00	0.00	
1,800.00	8.25	97.60	1,787.40	-23.97	179.64	181.23	0.00	0.00	
1,900.00	8.25	97.60	1,886.37	-25.87	193.86	195.58	0.00	0.00	
2,000.00	8.25	97.60	1,985.33	-27.77	208.09	209.93	0.00	0.00	
2,100.00	8.25	97.60	2,084.30	-29.66	222.32	224.29	0.00	0.00	
2,200.00	8.25	97.60	2,183.26	-31.56	236.54	238.64	0.00	0.00	
2,300.00	8.25	97.60	2,282.23	-33.46	250.77	252.99	0.00	0.00	
2,400.00	8.25	97.60	2,381.19	-35.36	265.00	267.34	0.00	0.00	
2,500.00	8.25	97.60	2,480.16	-37.26	279.22	281.70	0.00	0.00	
2,600.00	8.25	97.60	2,579.12	-39.16	293.45	296.05	0.00	0.00	
2,700.00	8.25	97.60	2,678.09	-41.05	307.67	310.40	0.00	0.00	
2,800.00	8.25	97.60	2,777.05	-42.95	321.90	324.75	0.00	0.00	
2,900.00	8.25	97.60	2,876.01	-44.85	336.13	339.11	0.00	0.00	
3,000.00	8.25	97.60	2,974.98	-46.75	350.35	353.46	0.00	0.00	
3,100.00	8.25	97.60	3,073.94	-48.65	364.58	367.81	0.00	0.00	
3,200.00	8.25	97.60	3,172.91	-50.55	378.81	382.16	0.00	0.00	
3,300.00	8.25	97.60	3,271.87	-52.44	393.03	396.52	0.00	0.00	
3,400.00	8.25	97.60	3,370.84	-54.34	407.26	410.87	0.00	0.00	
3,500.00	8.25	97.60	3,469.80	-56.24	421.49	425.22	0.00	0.00	
3,600.00	8.25	97.60	3,568.77	-58.14	435.71	439.57	0.00	0.00	
3,700.00	8.25	97.60	3,667.73	-60.04	449.94	453.93	0.00	0.00	
3,800.00	8.25	97.60	3,766.70	-61.94	464.16	468.28	0.00	0.00	
3,900.00	8.25	97.60	3,865.66	-63.83	478.39	482.63	0.00	0.00	
4,000.00	8.25	97.60	3,964.63	-65.73	492.62	496.98	0.00	0.00	
4,100.00	8.25	97.60	4,063.59	-67.63	506.84	511.34	0.00	0.00	
4,200.00	8.25	97.60	4,162.56	-69.53	521.07	525.69	0.00	0.00	
4,300.00	8.25	97.60	4,261.52	-71.43	535.30	540.04	0.00	0.00	
4,400.00	8.25	97.60	4,360.48	-73.32	549.52	554.39	0.00	0.00	
4,500.00	8.25	97.60	4,459.45	-75.22	563.75	568.75	0.00	0.00	
4,600.00	8.25	97.60	4,558.41	-77.12	577.98	583.10	0.00	0.00	
4,700.00	8.25	97.60	4,657.38	-79.02	592.20	597.45	0.00	0.00	
4,800.00	8.25	97.60	4,756.34	-80.92	606.43	611.80	0.00	0.00	
4,900.00	8.25	97.60	4,855.31	-82.82	620.65	626.16	0.00	0.00	
5,000.00	8.25	97.60	4,954.27	-84.71	634.88	640.51	0.00	0.00	

Cathedral Energy Services

Planning Report

Database:	USA EDM 5000 Multi Users DB	Local Co-ordinate Reference:	Well PUCKETT 41B-23
Company:	Caerus Oil & Gas	TVD Reference:	30' KB @ 8562.00usft (H&P 330)
Project:	Garfield County, CO (UTM 12N)	MD Reference:	30' KB @ 8562.00usft (H&P 330)
Site:	S23-T6S-R97W (MESA C23)	North Reference:	True
Well:	PUCKETT 41B-23	Survey Calculation Method:	Minimum Curvature
Wellbore:	OH		
Design:	PLAN #1		

Planned Survey									
Measured Depth (usft)	Inclination (°)	Azimuth (°)	Vertical Depth (usft)	+N/-S (usft)	+E/-W (usft)	Vertical Section (usft)	Dogleg Rate (°/100usft)	Build Rate (°/100u)	Comments / Formations
5,100.00	8.25	97.60	5,053.24	-86.61	649.11	654.86	0.00	0.00	
5,200.00	8.25	97.60	5,152.20	-88.51	663.33	669.21	0.00	0.00	
5,300.00	8.25	97.60	5,251.17	-90.41	677.56	683.56	0.00	0.00	
5,400.00	8.25	97.60	5,350.13	-92.31	691.79	697.92	0.00	0.00	
5,500.00	8.25	97.60	5,449.10	-94.21	706.01	712.27	0.00	0.00	
5,600.00	8.25	97.60	5,548.06	-96.10	720.24	726.62	0.00	0.00	
5,700.00	8.25	97.60	5,647.03	-98.00	734.46	740.97	0.00	0.00	
5,800.00	8.25	97.60	5,745.99	-99.90	748.69	755.33	0.00	0.00	
5,900.00	8.25	97.60	5,844.96	-101.80	762.92	769.68	0.00	0.00	
6,000.00	8.25	97.60	5,943.92	-103.70	777.14	784.03	0.00	0.00	
6,100.00	8.25	97.60	6,042.88	-105.60	791.37	798.38	0.00	0.00	
6,200.00	8.25	97.60	6,141.85	-107.49	805.60	812.74	0.00	0.00	
6,272.91	8.25	97.60	6,214.00	-108.88	815.97	823.20	0.00	0.00	OHIO_CREEK.MBL (TVD)
6,300.00	8.25	97.60	6,240.81	-109.39	819.82	827.09	0.00	0.00	
6,400.00	8.25	97.60	6,339.78	-111.29	834.05	841.44	0.00	0.00	
6,500.00	8.25	97.60	6,438.74	-113.19	848.28	855.79	0.00	0.00	
6,508.34	8.25	97.60	6,447.00	-113.35	849.46	856.99	0.00	0.00	WILLIAMS_FORK.MBL (TVD)
6,600.00	8.25	97.60	6,537.71	-115.09	862.50	870.15	0.00	0.00	
6,700.00	8.25	97.60	6,636.67	-116.98	876.73	884.50	0.00	0.00	
6,800.00	8.25	97.60	6,735.64	-118.88	890.95	898.85	0.00	0.00	
6,879.07	8.25	97.60	6,813.89	-120.38	902.20	910.20	0.00	0.00	
6,900.00	7.62	97.60	6,834.62	-120.77	905.07	913.09	3.00	-3.00	
7,000.00	4.62	97.60	6,934.04	-122.18	915.64	923.76	3.00	-3.00	
7,100.00	1.62	97.60	7,033.88	-122.90	921.04	929.21	3.00	-3.00	
7,154.13	0.00	0.00	7,088.00	-123.00	921.80	929.97	3.00	-3.00	
7,200.00	0.00	0.00	7,133.87	-123.00	921.80	929.97	0.00	0.00	
7,254.13	0.00	0.00	7,188.00	-123.00	921.80	929.97	0.00	0.00	TOP_GAS.MBL (TVD)
7,300.00	0.00	0.00	7,233.87	-123.00	921.80	929.97	0.00	0.00	
7,400.00	0.00	0.00	7,333.87	-123.00	921.80	929.97	0.00	0.00	
7,500.00	0.00	0.00	7,433.87	-123.00	921.80	929.97	0.00	0.00	
7,600.00	0.00	0.00	7,533.87	-123.00	921.80	929.97	0.00	0.00	
7,700.00	0.00	0.00	7,633.87	-123.00	921.80	929.97	0.00	0.00	
7,800.00	0.00	0.00	7,733.87	-123.00	921.80	929.97	0.00	0.00	
7,900.00	0.00	0.00	7,833.87	-123.00	921.80	929.97	0.00	0.00	
8,000.00	0.00	0.00	7,933.87	-123.00	921.80	929.97	0.00	0.00	
8,100.00	0.00	0.00	8,033.87	-123.00	921.80	929.97	0.00	0.00	
8,200.00	0.00	0.00	8,133.87	-123.00	921.80	929.97	0.00	0.00	
8,300.00	0.00	0.00	8,233.87	-123.00	921.80	929.97	0.00	0.00	
8,400.00	0.00	0.00	8,333.87	-123.00	921.80	929.97	0.00	0.00	
8,500.00	0.00	0.00	8,433.87	-123.00	921.80	929.97	0.00	0.00	
8,600.00	0.00	0.00	8,533.87	-123.00	921.80	929.97	0.00	0.00	
8,700.00	0.00	0.00	8,633.87	-123.00	921.80	929.97	0.00	0.00	
8,800.00	0.00	0.00	8,733.87	-123.00	921.80	929.97	0.00	0.00	
8,900.00	0.00	0.00	8,833.87	-123.00	921.80	929.97	0.00	0.00	
9,000.00	0.00	0.00	8,933.87	-123.00	921.80	929.97	0.00	0.00	
9,100.00	0.00	0.00	9,033.87	-123.00	921.80	929.97	0.00	0.00	
9,159.13	0.00	0.00	9,093.00	-123.00	921.80	929.97	0.00	0.00	ROLLINS.MBL (TVD)
9,200.00	0.00	0.00	9,133.87	-123.00	921.80	929.97	0.00	0.00	
9,300.00	0.00	0.00	9,233.87	-123.00	921.80	929.97	0.00	0.00	
9,309.13	0.00	0.00	9,243.00	-123.00	921.80	929.97	0.00	0.00	TD.MBL (TVD)

Cathedral Energy Services

Planning Report

Database:	USA EDM 5000 Multi Users DB	Local Co-ordinate Reference:	Well PUCKETT 41B-23
Company:	Caerus Oil & Gas	TVD Reference:	30' KB @ 8562.00usft (H&P 330)
Project:	Garfield County, CO (UTM 12N)	MD Reference:	30' KB @ 8562.00usft (H&P 330)
Site:	S23-T6S-R97W (MESA C23)	North Reference:	True
Well:	PUCKETT 41B-23	Survey Calculation Method:	Minimum Curvature
Wellbore:	OH		
Design:	PLAN #1		

Targets									
Target Name									
- hit/miss target	Dip Angle	Dip Dir.	TVD	+N/-S	+E/-W	Northing	Easting	Latitude	Longitude
- Shape	(°)	(°)	(usft)	(usft)	(usft)	(usft)	(usft)		
PUCKETT 41B-23 PBHL	0.00	0.00	9,243.00	-123.00	921.80	14,361,788.00	2,435,633.00	39.514689	-108.180610
- plan hits target center									
- Circle (radius 50.00)									

Formations						
Measured Depth	Vertical Depth	Name	Lithology	Dip	Dip Direction	
(usft)	(usft)			(°)	(°)	
6,272.91	6,214.00	OHIO_CREEK.MBL (TVD)				
6,508.34	6,447.00	WILLIAMS_FORK.MBL (TVD)				
7,254.13	7,188.00	TOP_GAS.MBL (TVD)				
9,159.13	9,093.00	ROLLINS.MBL (TVD)				
9,309.13	9,243.00	TD.MBL (TVD)				