

T6S, R97W, 6th P.M.

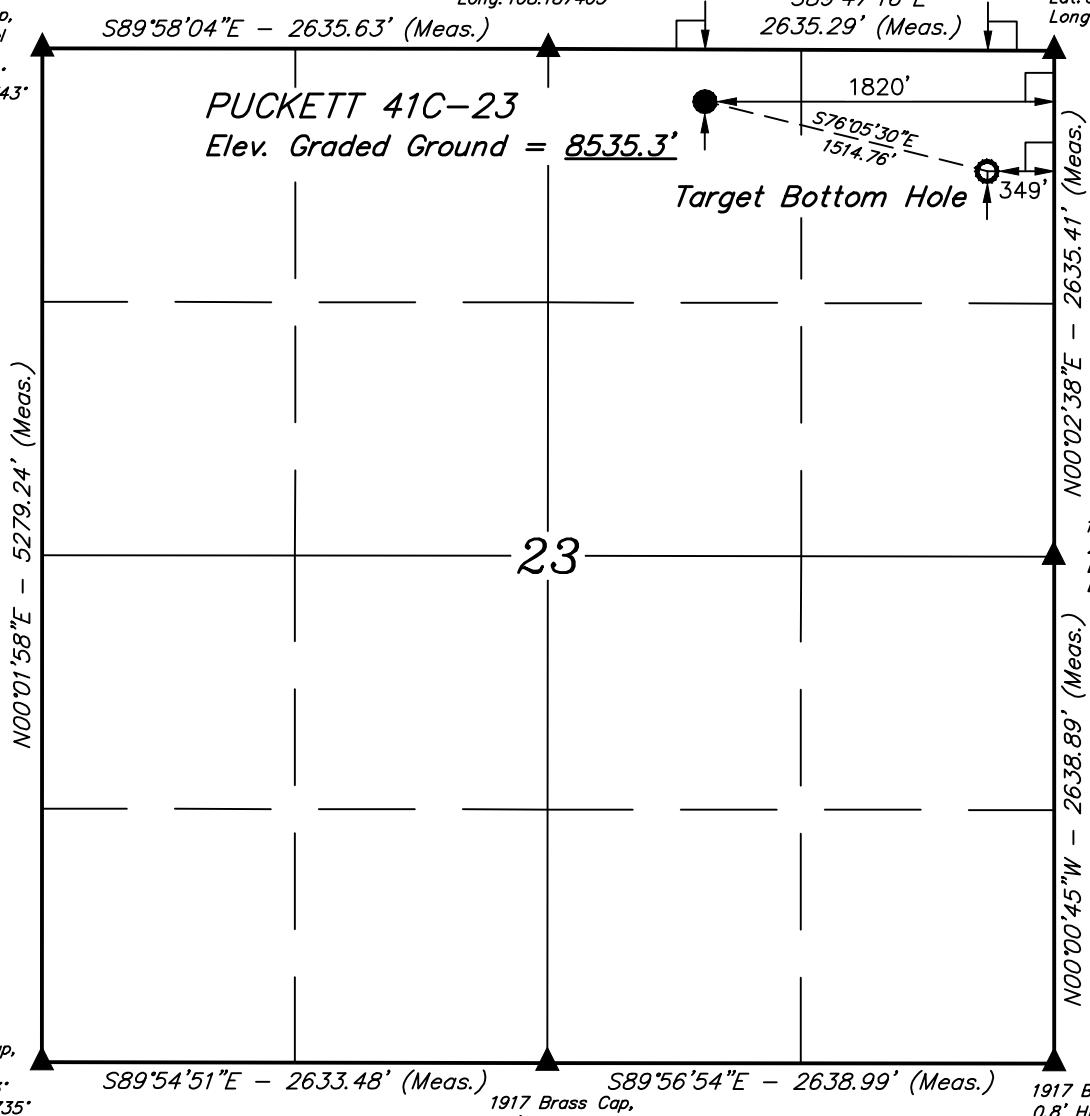
LEGEND:

- └─ = 90° SYMBOL
- = PROPOSED WELLHEAD.
- = TARGET BOTTOM HOLE.
- ▲ = SECTION CORNERS LOCATED. (NAD 83)

1917 Brass Cap,
1.6' High, Steel
Post
Lat: 39.515732°
Long: 108.196743°

1917 Brass Cap,
0.6' High
Lat: 39.515733°
Long: 108.187403°

1917 Brass Cap,
1.0' High, Fence Corner
Lat: 39.515714°
Long: 108.178067°



1917 Brass Cap,
1.0' High
Lat: 39.501243°
Long: 108.196735°

1917 Brass Cap,
1.3' High, Steel
Post
Lat: 39.501239°
Long: 108.187406°

1917 Brass Cap,
2.5' High
Lat: 39.508481°
Long: 108.178067°

PDOP = 1.6



NAD 83 (SURFACE LOCATION)	NAD 83 (TARGET BOTTOM HOLE)
LATITUDE = 39°30'53.94" (39.514983)	LATITUDE = 39°30'50.35" (39.513986)
LONGITUDE = 108°11'04.25" (108.184514)	LONGITUDE = 108°10'45.49" (108.179303)
NAD 27 (SURFACE LOCATION)	NAD 27 (TARGET BOTTOM HOLE)
LATITUDE = 39°30'54.02" (39.515006)	LATITUDE = 39°30'50.43" (39.514008)
LONGITUDE = 108°11'01.96" (108.183878)	LONGITUDE = 108°10'43.20" (108.178667)
UTM NAD 27 (ZONE 12)	UTM NAD 27 (ZONE 12)
N: 14361874.56 E: 2434707.98	N: 14361557.87 E: 2436189.30

CERTIFICATE OF SURVEY

THIS IS TO CERTIFY THAT THE ABOVE PLAN WAS PREPARED FROM FIELD NOTES OF ACTUAL SURVEYS MADE BY ME OR UNDER MY SUPERVISION AND THAT THE SAME ARE TRUE AND CORRECT TO THE BEST OF MY KNOWLEDGE AND BELIEF.

Handel Marshall

REGISTERED LAND SURVEYOR
REGISTRATION NO. 38130
STATE OF COLORADO

BASIS OF BEARINGS
BASIS OF BEARINGS IS A G.P.S. OBSERVATION

BASIS OF ELEVATION
SPOT ELEVATION AT THE NORTHWEST CORNER OF SECTION 30, T5S, R95W, 6th P.M., TAKEN FROM THE FORKED GULCH, QUADRANGLE, COLORADO, GARFIELD COUNTY, 7.5 MINUTE QUAD. (TOPOGRAPHIC MAP) PUBLISHED BY THE UNITED STATES DEPARTMENT OF THE INTERIOR, GEOLOGICAL SURVEY. SAID ELEVATION IS MARKED AS BEING 5966 FEET.



Caerus Oil & Gas LLC

PUCKETT 41C-23
NW 1/4 NE 1/4, SECTION 23, T6S, R97W, 6th P.M.
GARFIELD COUNTY, COLORADO

SURVEYED BY	BRIAN BAKER, J.L.	06-07-16	SCALE
DRAWN BY	C.D.L.	06-09-16	1" = 1000'

WELL LOCATION PLAT



UELS, LLC
Corporate Office * 85 South 200 East
Vernal, UT 84078 * (435) 789-1017