



July 14, 2016

Mr. Phillip Porter  
EHS Compliance Specialist  
PDC Energy, Inc.  
1775 Sherman Street, Suite 3000  
Denver, Colorado 80203

**RE: Post-Incorporation Soil Sampling Report  
Easton #2 Beneficial Reuse Area (Facility ID #429629)  
NW Sec. 12 T4N R65W 6PM  
Weld County, Colorado**

Dear Mr. Porter:

LT Environmental, Inc. (LTE), under the direction of PDC Energy, Inc. (PDC), conducted post-incorporation soil sampling activities at the Easton #2 Beneficial Reuse Area (Site) located in Weld County, Colorado (Figure 1). The objective of the sampling event was to provide comparative data after drill cuttings were spread and incorporated into the native soil as a beneficial amendment at the Site. This correspondence summarizes the soil sampling activities conducted at the Site in August 2015 and April 2016.

LTE previously conducted baseline sampling at the Site on July 2, 2012, before spreading activities with drill cuttings were initiated. LTE summarized the analytical and percolation testing results from the baseline sampling event in the report titled, *Baseline Sampling Results, PDC Mud Spread Fields, Easton #2 Property*, dated July 18, 2012.

### **Baseline Soil Sampling and Percolation Testing**

The National Resource Conservation Service (NRCS) indicates the first three to six inches of native soil at the Site are characterized as Nelson fine sandy loam. On July 2, 2012, under the direction of PDC, LTE personnel collected one composite soil sample for soil identification, conducted two percolation tests, and collected eight soil samples for laboratory analysis.

### **Post-Incorporation Soil Classification and Percolation Testing**

On August 28, 2015, under the direction of PDC, LTE personnel collected one composite soil sample from the soil type (Nelson fine sandy loam) representative of the Site and submitted the sample to Weld Laboratories, Inc. in Greeley, Colorado, for soil classification analysis.

On August 27 and 28, 2015, under the direction of PDC, LTE personnel conducted two percolation tests at the Site. Each test was completed in an 18-inch deep soil boring at the Site. The borings were first pre-soaked by maintaining a high water level. The percolation tests were conducted within 24 hours of the initial pre-soak unless the water percolated through the borings at an accelerated rate. Once the water had percolated into the borings, LTE personnel initiated the tests by filling the borings and installing a pressure transducer equipped with a data logger to measure the decrease in the water level



as it percolated over a sufficient period of time. The percolation test locations are illustrated on Figure 2.

### **Post-Incorporation Soil Classification and Percolation Testing Results**

Laboratory results indicated the Nelson fine sandy loam composite sample collected from the upper 18 inches of soil was composed of 66.1 percent (%) silt and clay and 33.9% sand and organic matter. These data indicated the silt and clay content at this location increased by 49% after the incorporation of drilling fluid and drill cuttings at the Site. The laboratory classified the composite sample as loam.

Based on the results from the soil classification analyses, 26% of the soils across the Site are clay. Prior to the incorporation of drill cuttings, 9.1% of the soils across the Site were clay. The laboratory results indicate the overall clay content in the Nelson fine sandy loam land application areas increased following the incorporation of drill cuttings in the upper 18 inches of soil. Soil classification laboratory results are included in Attachment 1.

In addition, LTE used percolation test results to generate site-specific hydraulic conductivity data for the upper 18 inches of soil at the Site. The hydraulic conductivity for the upper soils at the Site is approximately  $5.67 \times 10^{-4}$  to  $1.28 \times 10^{-3}$  centimeters per second (cm/s) for percolation test locations PT01 and PT02, respectively. Prior to the incorporation of drill cuttings, the hydraulic conductivity was approximately  $1.13 \times 10^{-4}$  to  $1.00 \times 10^{-4}$  cm/s for percolation test locations PT01 and PT02, respectively. These data indicate the hydraulic conductivity increased by over 500% from the documented baseline levels at the PT01 percolation test location, and the hydraulic conductivity increased by an order of magnitude at the PT02 percolation test location. The post-incorporation hydraulic conductivity is consistent with published values for unconsolidated sediments that include silt, sandy silts, clayey sands, and till (*Applied Hydrogeology - Fourth Edition*, C.W. Fetter). Charts depicting the percolation test data for the Site are provided in Attachments 2 and 3.

### **Post-Incorporation Soil Sampling**

On August 28, 2015, under the direction of PDC, LTE personnel collected eight surface soil samples (SS01 through SS08) at the same approximate locations as the baseline sampling event on July 2, 2012. The individual aliquots were composited vertically from ground surface to a depth of 18-inches below ground surface (bgs) using a hand auger. The soil was inspected for the presence/absence of petroleum hydrocarbon odor and/or staining by visually inspecting the soil samples collected. The soil sample locations are illustrated on Figure 2.

The soil samples were collected, placed on ice, then submitted with a completed chain of custody to Summit Scientific of Golden, Colorado. All soil samples were submitted for analysis of arsenic by United States Environmental Protection Agency (EPA) Method 6020A. Soil samples SS02, SS03, SS06, and SS07 were also submitted for the following analyses.



Analyte	Method
Benzene, toluene, ethylbenzene, and total xylenes (BTEX)	EPA Method 8260B
Total Petroleum Hydrocarbons (TPH) – Gasoline Range Organics (GRO)	EPA Method 8260B
TPH – Diesel Range Organics (DRO)	EPA modified Method 8015
Electrical Conductivity (EC)	Standard Method 2510B
Sodium Adsorption Ratio (SAR)	EPA 6020/United States Department of Agriculture (USDA) Handbook No. 60 Chapter 6 (2, 3A)
pH	EPA Method 9045B
Acenaphthene	EPA Method 8270D SIM
Anthracene	EPA Method 8270D SIM
Benzo (A) anthracene	EPA Method 8270D SIM
Benzo (B) fluoranthene	EPA Method 8270D SIM
Benzo (K) fluoranthene	EPA Method 8270D SIM
Benzo (A) pyrene	EPA Method 8270D SIM
Chrysene	EPA Method 8270D SIM
Dibenzo (A,H) anthracene	EPA Method 8270D SIM
Fluoranthene	EPA Method 8270D SIM
Fluorene	EPA Method 8270D SIM
Indeno (1,2,3,C,D) pyrene	EPA Method 8270D SIM
Napthalene	EPA Method 8270D SIM
Pyrene	EPA Method 8270D SIM
Barium	EPA Method 6020
Cadmium	EPA Method 6020
Chromium (III)	EPA Method 7196
Chromium (VI)	EPA Method 7196
Copper	EPA Method 6020
Lead (inorganic)	EPA Method 6020
Mercury	EPA Method 7471
Nickel (soluble salts)	EPA Method 6020
Selenium	EPA Method 6020
Silver	EPA Method 6020
Zinc	EPA Method 6020

### Post-Incorporation Soil Sampling Results

Laboratory analytical results indicated soil sample SS07 exceeded the Colorado Oil and Gas Conservation Commission (COGCC) Table 910-1 allowable concentration for benzo (A) pyrene at a concentration of 0.0279 milligrams per kilograms (mg/kg). Soil samples SS02, SS03, SS06, and SS07 exceeded the COGCC Table 910-1 allowable concentration for EC at concentrations of 7.96 millimhos per centimeter (mmhos/cm), 7.14 mmhos/cm, 4.32 mmhos/cm, and 8.54 mmhos/cm, respectively. Soil



samples SS02, SS03, and SS07 exceeded the COGCC Table 910-1 concentration level for SAR at concentrations of 18.7, 25.3, and 21.2, respectively. All soil samples (SS01 through SS08) exceeded the COGCC Table 910-1 concentration level for arsenic at concentrations of 6.88 mg/kg, 8.43 mg/kg, 8.15 mg/kg, 8.81 mg/kg, 7.18 mg/kg, 7.68 mg/kg, 7.43 mg/kg, and 6.61 mg/kg, respectively. All remaining analytical results indicated compliance with applicable COGCC Table 910-1 allowable concentrations.

### **Subsequent Post-Incorporation Soil Sampling**

On April 26, 2016, under the direction of PDC, LTE personnel collected eight subsequent follow-up surface soil samples (SS01 through SS08) at the same approximate locations of the soil samples collected during the August 2015 sampling event. The purpose this sampling event was to document soil conditions following the August 2015 sampling event for analytes that exceeded the COGCC Table 910-1 concentration levels.

The eight soil samples were submitted for analysis of arsenic by EPA method 6020. In addition, soil samples SS02, SS03, and SS07 were submitted for analysis of EC and SAR by Standard Method 2510B and EPA 6020/USDA Handbook No. 60 Chapter 6 (2, 3A), respectively; soil sample SS06 was submitted for analysis of EC; and soil sample SS07 was submitted for analysis of benzo (A) pyrene by EPA Method 8270D SIM.

### **Subsequent Post-Incorporation Soil Sampling Results**

Laboratory analytical results indicated soil sample SS06 exceeded the COGCC Table 910-1 allowable concentration for EC at a concentration of 5.90 mmhos/cm. All remaining analytical results with the exception of arsenic were compliant with applicable COGCC Table 910-1 allowable concentrations.

Laboratory analytical results indicated all soil samples (SS01 through SS08) exceeded the COGCC Table 910-1 allowable concentration for arsenic at concentrations of 6.07 mg/kg, 6.05 mg/kg, 5.51 mg/kg, 8.31 mg/kg, 7.59 mg/kg, 8.74 mg/kg, 4.77 mg/kg, and 6.97 mg/kg, respectively. All baseline soil samples (SS01 through SS08) collected on July 2, 2012, before the incorporation of drilling fluid and drill cuttings, also exceeded the COGCC Table 910-1 allowable concentration for arsenic. Elevated arsenic concentrations are not uncommon, as background concentrations for Colorado have been observed to range from 0.3 to 26 parts per million (Severson, R. C., and Tourlet, H. A., 1994, *Assessment of Geochemical Variability and a Listing of Geotechnical Data for Surface Soils of the Front Range Urban Corridor: U.S. Geological Survey Open-File Report 94-648*). The arsenic concentrations detected at the Site appear to be representative of background concentrations observed in regional soils.

Soil sample analytical results are summarized in Table 1. The laboratory analytical reports are included as Attachments 4, 5, and 6.

### **Summary and Conclusions**

Under the direction of PDC, LTE personnel collected one composite soil sample for soil classification, conducted two percolation tests, and collected a total of eight surface soil samples on August 28, 2015



and eight subsequent surface soil samples on April 26, 2016 which were submitted for laboratory analysis.

The laboratory soil classification analyses indicated that the soil type at the Site is loam. The result is different from the classification made by the NRCS. Hydraulic conductivity values from the percolation testing are consistent with the soil classification at the Site. According to the soil classification and percolation testing data, the hydraulic conductivity in the upper soils at the Site have increased following the incorporation of drill cuttings into the native soil.

Final surface soil samples SS02, SS03, SS06, and SS07 were compliant with the COGCC Table 910-1 allowable concentrations for BTEX, TPH, PAHs, pH, SAR, and metals with the exception of arsenic, but are similar to the naturally occurring elevated arsenic levels common in the region. There was a exceedance for EC at soil sample location SS06. It is possible that this exceedance will not affect final reclamation efforts.

LTE appreciates the opportunity to provide environmental services to PDC. Please call us at 303-433-9788 if you have any questions or comments regarding this report.

Sincerely,

LT ENVIRONMENTAL, INC.

A handwritten signature in black ink, appearing to read 'Dan Hosler'.

Daniel Hosler  
Staff Geologist

A handwritten signature in black ink, appearing to read 'Brett Forkner'.

Brett Forkner, CISEC  
Project Environmental Scientist

Attachments:

Figure 1 - Site Location Map

Figure 2 - Site Map

Table 1 - Soil Analytical Results

Attachment 1 - Soil Classification Laboratory Report

Attachment 2 - Percolation Test Chart for Percolation Test Location PT01

Attachment 3 - Percolation Test Chart for Percolation Test Location PT02

Attachment 4 - Baseline Laboratory Analytical Report

Attachment 5 - Post-Incorporation Laboratory Analytical Report

Attachment 6 - Subsequent Post-Incorporation Laboratory Analytical Report

## FIGURES





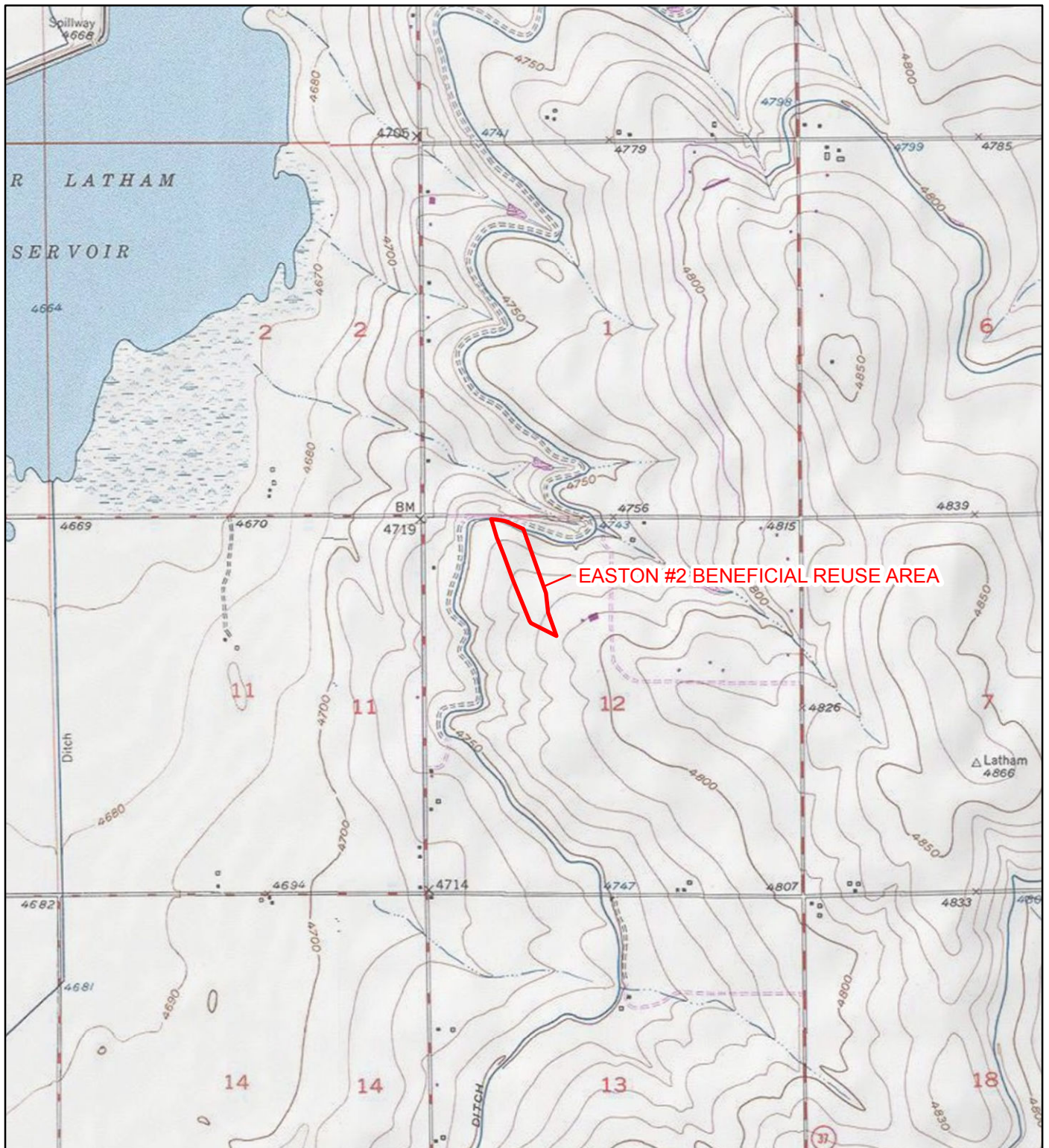


IMAGE COURTESY OF ESRI/USGS

# LEGEND

SITE LOCATION

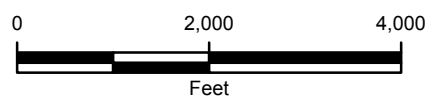


FIGURE 1  
SITE LOCATION MAP  
EASTON #2 BENEFICIAL REUSE AREA  
NW SEC 12 T4N R65W  
WELD COUNTY, COLORADO  
PDC ENERGY, INC.





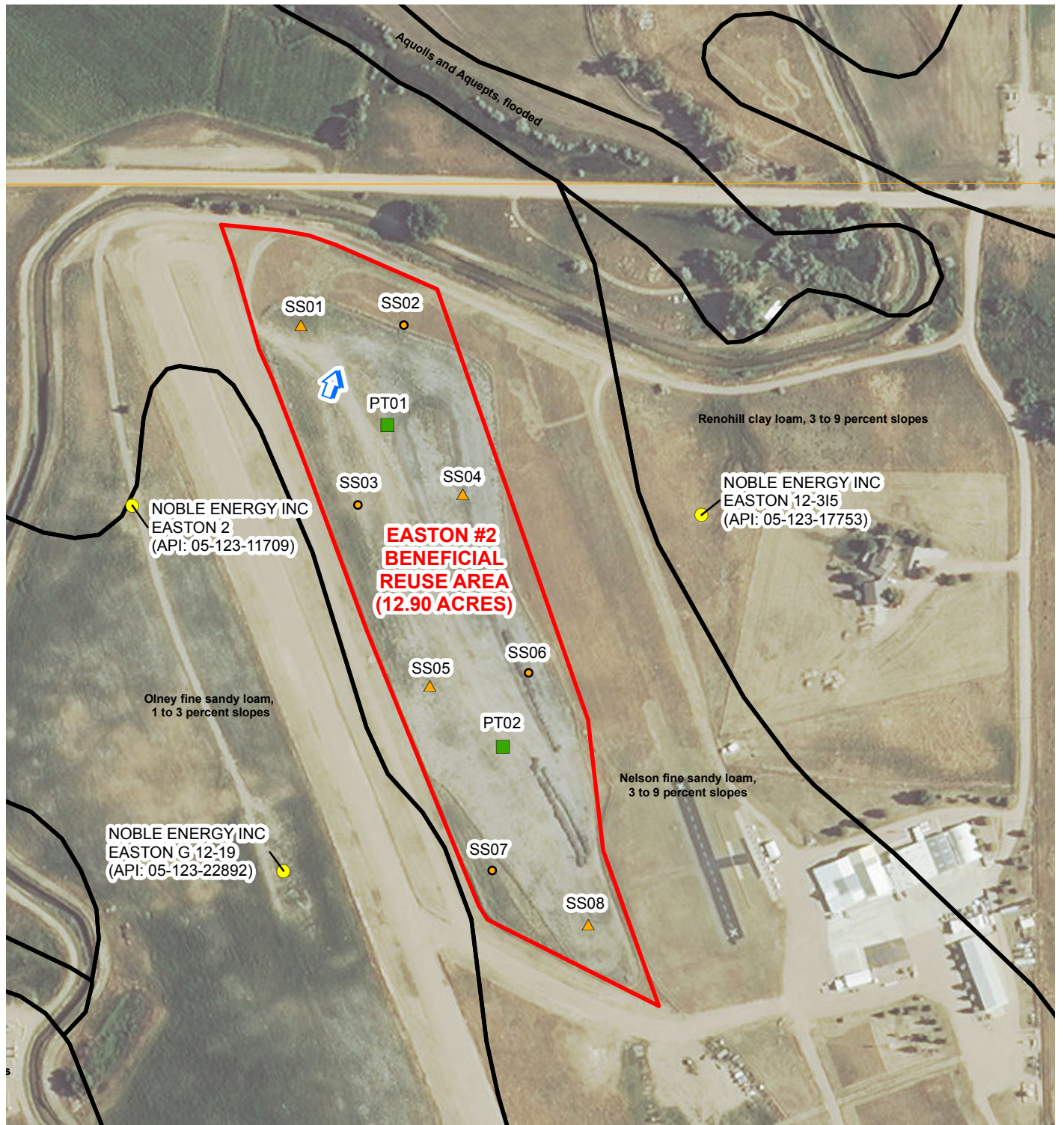
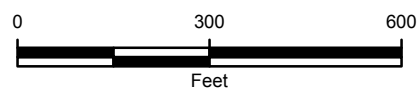


IMAGE COURTESY OF ESRI

## LEGEND

- SOIL SAMPLE
- ▲ ARSENIC SOIL SAMPLE
- PERCOLATION TEST
- PRODUCTION WELL
- ↑ ESTIMATED GROUNDWATER FLOW DIRECTION
- SITE LOCATION
- NRCS SOIL TYPE
- SECTION



**FIGURE 2**  
**SOIL SAMPLE LOCATION MAP**  
**EASTON #2 BENEFICIAL REUSE AREA**  
**NW SEC 12 T4N R65W**  
**WELD COUNTY, COLORADO**  
**PDC ENERGY, INC.**





**TABLE 1**

TABLE 1  
SOIL ANALYTICAL RESULTS  
  
EASTON #2 BENEFICIAL REUSE AREA  
WELD COUNTY, COLORADO  
PDC ENERGY, INC.

Parameter	COGCC Table 910-1 Limit	Units	SS01	SS01	SS01	SS02	SS02	SS02	SS03	SS03	SS03	SS04	SS04	SS04	SS05	SS05	SS05	SS06	SS06	SS06	SS07	SS07	SS07	SS08	SS08	SS08
Sample Date			7/2/2012	8/28/2015	4/26/2016	7/2/2012	8/28/2015	4/26/2016	7/2/2012	8/28/2015	4/26/2016	7/2/2012	8/28/2015	4/26/2016	7/2/2012	8/28/2015	4/26/2016	7/2/2012	8/28/2015	4/26/2016	7/2/2012	8/28/2015	4/26/2016	7/2/2012	8/28/2015	4/26/2016
Sample Type			Baseline	Closure	Closure	Baseline	Closure	Closure	Baseline	Closure	Closure	Baseline	Closure	Closure	Baseline	Closure	Closure	Baseline	Closure	Closure	Baseline	Closure	Closure	Baseline	Closure	Closure
Benzene	0.17	mg/kg	--	--	--	<0.0050	<0.0020	--	<0.0050	<0.0020	--	--	--	--	--	--	--	<0.0050	<0.0020	--	<0.0050	<0.0020	--	--	--	--
Toluene	85	mg/kg	--	--	--	<0.0050	<0.0050	--	<0.0050	<0.0050	--	--	--	--	--	--	--	<0.0050	<0.0050	--	<0.0050	<0.0050	--	--	--	--
Ethylbenzene	100	mg/kg	--	--	--	<0.0050	<0.0050	--	<0.0050	<0.0050	--	--	--	--	--	--	--	<0.0050	<0.0050	--	<0.0050	<0.0050	--	--	--	--
Total Xylenes	175	mg/kg	--	--	--	<0.0050	<0.0050	--	<0.0050	<0.0050	--	--	--	--	--	--	--	<0.0050	<0.0050	--	<0.0050	<0.0050	--	--	--	--
TEPH-DRO	--	mg/kg	--	--	--	<50	73	--	<50	120	--	--	--	--	--	--	--	<50	73	--	<50	220	--	--	--	--
TVPH-GRO	--	mg/kg	--	--	--	<0.50	<0.50	--	<0.50	<0.50	--	--	--	--	--	--	--	<0.50	<0.50	--	<0.50	<0.50	--	--	--	--
TPH Total	500	mg/kg	--	--	--	<50.50	73	--	<50.50	120	--	--	--	--	--	--	--	<50.50	73	--	<50.50	220	--	--	--	--
Arsenic	0.39	mg/kg	<b>1.51</b>	<b>6.88</b>	<b>6.07</b>	<b>2.49</b>	<b>8.43</b>	<b>6.05</b>	<b>2.46</b>	<b>8.15</b>	<b>5.51</b>	<b>1.97</b>	<b>8.81</b>	<b>8.31</b>	<b>3.18</b>	<b>7.18</b>	<b>7.59</b>	<b>2.89</b>	<b>7.68</b>	<b>8.74</b>	<b>4.40</b>	<b>7.43</b>	<b>4.77</b>	<b>2.63</b>	<b>6.61</b>	<b>6.97</b>
Barium	15,000	mg/kg	--	--	--	62.8	648	--	75.6	485	--	--	--	--	--	--	--	94.7	313	--	104	313	--	--	--	--
Cadmium	70	mg/kg	--	--	--	0.123	1.11	--	0.155	1.46	--	--	--	--	--	--	--	0.397	0.958	--	0.297	1.39	--	--	--	--
Chromium (III)	120,000	mg/kg	--	--	--	5.92	14.0	--	6.27	12.2	--	--	--	--	--	--	--	8.74	14.2	--	7.88	14.6	--	--	--	--
Chromium (VI)	23	mg/kg	--	--	--	<1	<1.15	--	<1	<1.06	--	--	--	--	--	--	--	<1	<0.915	--	<1	<1.06	--	--	--	--
Copper	3,100	mg/kg	--	--	--	5.62	23.6	--	5.70	28.1	--	--	--	--	--	--	--	12.9	25.7	--	11.2	27.1	--	--	--	--
Lead	400	mg/kg	--	--	--	6.47	10.6	--	7.08	10.9	--	--	--	--	--	--	--	10.8	10.7	--	11.1	9.16	--	--	--	--
Mercury	23	mg/kg	--	--	--	<0.0500	<0.0573	--	<0.0500	<0.0466	--	--	--	--	--	--	--	<0.0500	0.0421	--	<0.0500	<0.0470	--	--	--	--
Nickel	1,600	mg/kg	--	--	--	7.19	20.8	--	6.94	23.1	--	--	--	--	--	--	--	13.8	20.9	--	10.9	22.4	--	--	--	--
Selenium	390	mg/kg	--	--	--	<0.100	2.66	--	0.102	3.14	--	--	--	--	--	--	--	0.219	2.31	--	0.209	3.25	--	--	--	--
Silver	390	mg/kg	--	--	--	<0.100	0.163	--	<0.100	0.166	--	--	--	--	--	--	--	<0.100	0.177	--	<0.100	0.199	--	--	--	--
Zinc	23,000	mg/kg	--	--	--	25.9	72.3	--	24.5	105	--	--	--	--	--	--	--	57	68.8	--	44.7	69.8	--	--	--	--
Acenaphthene	1,000	mg/kg	--	--	--	<0.005	<0.00500	--	<0.005	<0.00500	--	--	--	--	--	--	--	<0.005	<0.00500	--	<0.005	<0.00500	--	--	--	--
Anthracene	1,000	mg/kg	--	--	--	<0.005	<0.00500	--	<0.005	<0.00500	--	--	--	--	--	--	--	<0.005	<0.00500	--	<0.005	<0.00500	--	--	--	--
Benzo (A) anthracene	0.22	mg/kg	--	--	--	<0.005	0.0220	--	<0.005	<0.00500	--	--	--	--	--	--	--	<0.005	<0.00500	--	<0.005	0.0219	--	--	--	--
Benzo (B) fluoranthene	0.22	mg/kg	--	--	--	<0.005	0.0110	--	<0.005	0.0110	--	--	--	--	--	--	--	<0.005	0.0146	--	<0.005	0.0473	--	--	--	--
Benzo (K) fluoranthene	2.2	mg/kg	--	--	--	<0.005	<0.00500	--	<0.005	<0.00500	--	--	--	--	--	--	--	<0.005	<0.00500	--	<0.005	0.0141	--	--	--	--
Benzo (A) pyrene	0.022	mg/kg	--	--	--	<0.005	0.00523	--	<0.005	0.00806	--	--	--	--	--	--	--	<0.005	0.00673	--	<0.005	<b>0.0279</b>	<0.00500	--	--	--
Chrysene	22	mg/kg	--	--	--	<0.005	0.0136	--	<0.005	0.0753	--	--	--	--	--	--	--	<0.005	0.0164	--	<0.005	0.0862	--	--	--	--
Dibenzo (A,H) anthracene	0.022	mg/kg	--	--	--	<0.01	<0.00500	--	<0.01	<0.00500	--	--	--	--	--	--	--	<0.01	<0.00500	--	<0.01	<0.00500	--	--	--	--
Fluoranthene	1,000	mg/kg	--	--	--	<0.005	0.00608	--	<0.005	<0.00500	--	--	--	--	--	--	--	<0.005	0.00674	--	<0.005	0.01540	--	--	--	--
Fluorene	1,000	mg/kg	--	--	--	<0.005	<0.00500	--	<0.005	0.00526	--	--	--	--	--	--	--	<0.005	<0.00500	--	<0.005	0.00625	--	--	--	--
Indeno (1,2,3,C,D) pyrene	0.22	mg/kg	--	--	--	<0.01	<0.00500	--	<0.01	<0.00500	--	--	--	--	--	--	--	<0.01	<0.00500	--	<0.01	0.0224	--	--	--	--
Napthalene	23	mg/kg	--	--	--	<0.005	0.00984	--	<0.005	0.0211	--	--	--	--	--	--	--	<0.005	0.0147	--	<0.005	0.0168	--	--	--	--
Pyrene	1,000	mg/kg	--	--	--	<0.005	0.00994	--	<0.005	0.0225	--	--	--	--	--	--	--	<0.005	0.0216	--	<0.005	0.0532	--	--	--	--
EC	4	mmhos/cm	--	--	--	0.332	<b>7.96</b>	3.28	0.176	<b>7.14</b>	3.90	--	--	--	--	--	--	0.449	<b>4.32</b>	<b>5.90</b>	0.644	<b>8.54</b>	0.436	--	--	--
pH	6 - 9	SU	--	--	--	8.3	8.08	--	7.8	8.18	--	--	--	--	--	--	--	8.5	8.24	--	8.3	8.10	--	--	--	--
SAR	12	unitless	--	--	--	0.200	<b>18.7</b>	2.10	0.360	<b>25.3</b>	5.44	--	--	--	--	--	--	0.750	10.3	--	0.700	<b>21.2</b>	0.307	--	--	--

NOTES:  
COGCC - Colorado Oil and Gas Conservation Commission  
EC - electrical conductivity  
mg/kg - milligrams per kilogram  
mmhos/cm - millimhos per centimeter in saturated paste extract  
SAR - sodium adsorption ratio  
SU - standard unit on saturated paste  
TEPH-DRO - total extractable petroleum hydrocarbon-diesel range organics  
TPH - total petroleum hydrocarbons  
TVPH-GRO - total volume petroleum hydrocarbon-gasolene range organics  
  
-- - not analyzed/no standard  
< - less than the stated analytical reporting limit  
**BOLD** - indicates result exceeds the COGCC Table 910-1 Concentration Level

**ATTACHMENT 1**  
**SOIL CLASSIFICATION LABORATORY REPORT**



# WELD LABORATORIES, INC.

1527 First Avenue • Greeley, Colorado 80631  
Phone: (970) 353-8118 • Fax: (970) 353-1671  
[www.weldlabs.com](http://www.weldlabs.com)

October 13, 2015

LT Environmental  
4600 W 60th Ave  
Arvada, CO 80003-6911

Laboratory No. E15253-2

## Soil Classification

Sample ID	% Silt	% Clay	% Sand	% Fine Sand	Classification
Easton Property #2 Soil classification	40.1	26.0	23.1	10.8	Loam



*D. H. Miller*  
Project Manager

10/13/15  
Date

Sampling procedures can affect the value of analytical results – customers are advised to use appropriate sampling protocol to insure samples are truly representative of the bulk sample.

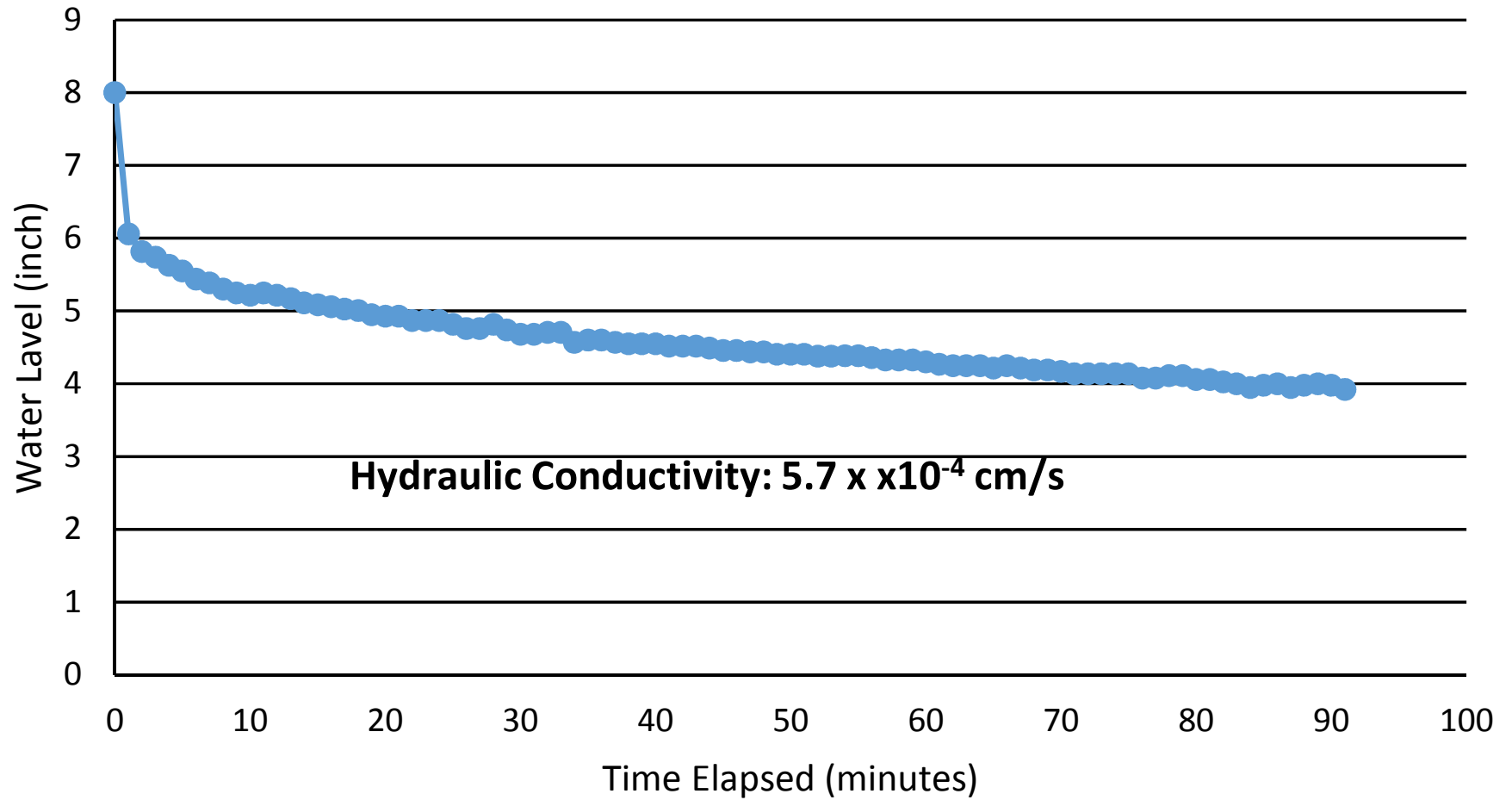


**ATTACHMENT 2**

**PERCOLATION TEST CHART FOR PERCOLATION TEST LOCATION PT01**



# Percolation Test PT01

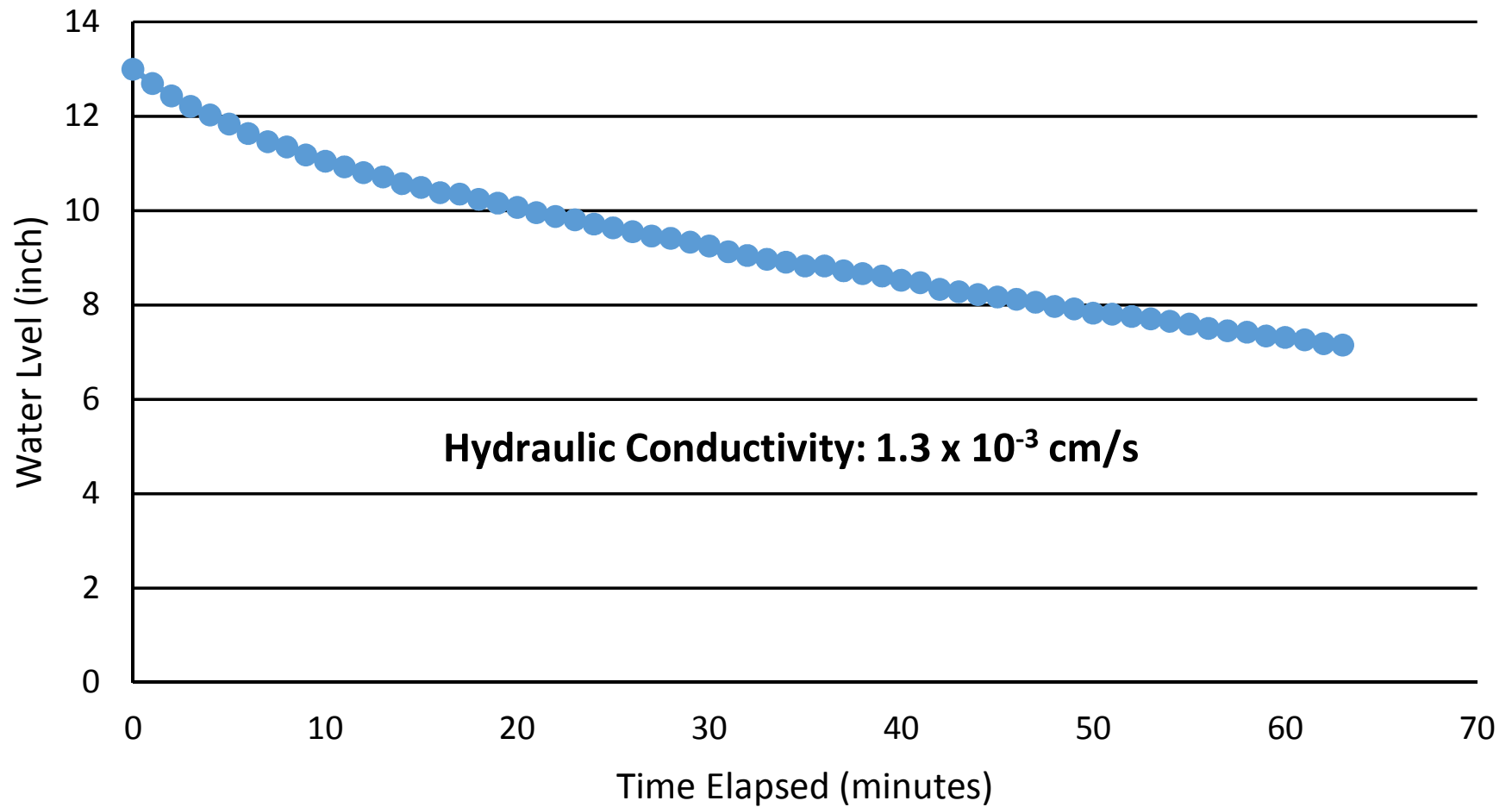


**ATTACHMENT 3**

**PERCOLATION TEST CHART FOR PERCOLATION TEST LOCATION PT02**



# Percolation Test PT02





**ATTACHMENT 4**  
**BASELINE LABORATORY ANALYTICAL REPORT**



# Summit Scientific

---

741 Corporate Circle – Suite I ♦ Golden, Colorado 80401

303.277.9310 - laboratory ♦ 303.277.9531 - fax

July 10, 2012

Brian Dodek  
LT Environmental, Inc.  
4600 West 60th Avenue  
Arvada, CO 80003  
RE: PDC - Easton Property

Enclosed are the results of analyses for samples received by Summit Scientific on 07/02/12 16:30. If you have any questions concerning this report, please feel free to contact me.

Sincerely,

A handwritten signature in black ink, appearing to read 'Paul Shrewsbury', is written over a light gray circular background.

Paul Shrewsbury For Ben Shrewsbury  
President / Laboratory Director



LT Environmental, Inc.  
4600 West 60th Avenue  
Arvada CO, 80003

Project: PDC - Easton Property

Project Number: PDC  
Project Manager: Brian Dodek

**Reported:**  
07/10/12 09:17

### ANALYTICAL REPORT FOR SAMPLES

Sample ID	Laboratory ID	Matrix	Date Sampled	Date Received
SS01	R207019-01	Soil	07/02/12 12:05	07/02/12 16:30
SS02	R207019-02	Soil	07/02/12 12:20	07/02/12 16:30
SS03	R207019-03	Soil	07/02/12 12:40	07/02/12 16:30
SS04	R207019-04	Soil	07/02/12 13:00	07/02/12 16:30
SS05	R207019-05	Soil	07/02/12 13:15	07/02/12 16:30
SS06	R207019-06	Soil	07/02/12 13:35	07/02/12 16:30
SS07	R207019-07	Soil	07/02/12 13:55	07/02/12 16:30
SS08	R207019-08	Soil	07/02/12 14:10	07/02/12 16:30

Summit Scientific

*The results in this report apply to the samples analyzed in accordance with the chain of custody document. This analytical report must be reproduced in its entirety.*



LT Environmental, Inc.  
4600 West 60th Avenue  
Arvada CO, 80003

Project: PDC - Easton Property

Project Number: PDC  
Project Manager: Brian Dodek

Reported:  
07/10/12 09:17

R 207019

Summit Scientific

741 Comoros Circle Suite 100 Golden, Colorado 80401  
303-277-9310 • 303-277-9531 Fax

Client: LT Environmental, Inc.  
Address: 4600 West 60th Avenue  
City/State/Zip: Arvada, CO 80003  
Phone: (303) 433-9788  
Sample Name: Dev. Gr. 1st  
Project Manager: Brian Dodek  
E-Mail: bddodek@ltenv.com  
Project Name: Easton #2 Property  
Project Number: 0788 RD

Sample Description	Date Sampled	Time Sampled	Number of Containers	Preservative				Matrix				Analyze For:				Special Instructions	
				HCl	HNO <sub>3</sub>	None	Other (Specify)	Groundwater	Soil	Air - Canister Serial #	Other (Specify)	DRO	GBTEX	BTEX	PH / EC		SAR
5501	7-2-12	1205	1			X											
5502		1230	3														
5503		1240	3														
5504		1340	1														
5505		1345	1														
5506		1335	3														
5507		1355	3														
5508		1410	1														

Relinquished by:	Date/Time:	Received by:	Date/Time:	Turn Around Time (Check):	Notes:
<i>Dev. Gr. 1st</i>	7-2-12			Same Day 24 Hours 48 Hours	Full Table 910-1 for 5502, 5503, 5506, + 5509. As only for other samples
				Sample Integrity: <input checked="" type="checkbox"/> 72 Hours <input type="checkbox"/> 24 Hours <input type="checkbox"/> 48 Hours	
				Temperature Upon Receipt: <u>50</u> Impact: <u>Yes</u> <input type="checkbox"/> No <input checked="" type="checkbox"/>	





LT Environmental, Inc.  
4600 West 60th Avenue  
Arvada CO, 80003

Project: PDC - Easton Property

Project Number: PDC  
Project Manager: Brian Dodek

**Reported:**  
07/10/12 09:17

**SS01**  
**R207019-01 (Soil)**

**Summit Scientific**

**Total Metals by EPA Method 6020 - Dry Weight Basis**

Date Sampled: **07/02/12 12:05**

Analyte	Result	Reporting Limit	Units	Dilution	Batch	Prepared	Analyzed	Method	Notes
Arsenic	1.51	0.100	mg/kg	1	2070301	07/03/12	07/03/12	EPA 6020	

Summit Scientific

*The results in this report apply to the samples analyzed in accordance with the chain of custody document. This analytical report must be reproduced in its entirety.*



LT Environmental, Inc.  
4600 West 60th Avenue  
Arvada CO, 80003

Project: PDC - Easton Property  
Project Number: PDC  
Project Manager: Brian Dodek

**Reported:**  
07/10/12 09:17

**SS02**  
**R207019-02 (Soil)**

**Summit Scientific**

**Total Petroleum Hydrocarbons by 8015**

Date Sampled: **07/02/12 12:20**

Analyte	Result	Reporting Limit	Units	Dilution	Batch	Prepared	Analyzed	Method	Notes
C10-C28 (DRO)	ND	50	mg/kg	1	2070212	07/02/12	07/03/12	8015 DRO	

Date Sampled: **07/02/12 12:20**

Analyte	Result	Reporting Limit	Units	Dilution	Batch	Prepared	Analyzed	Method	Notes
Surrogate: <i>o</i> -Terphenyl		99.3 %	30-150		"	"	"	"	

**Volatile Organic Compounds by EPA Method 8260B**

Date Sampled: **07/02/12 12:20**

Analyte	Result	Reporting Limit	Units	Dilution	Batch	Prepared	Analyzed	Method	Notes
Benzene	ND	0.0050	mg/kg	1	2070211	07/02/12	07/02/12	EPA 8260B	
Toluene	ND	0.0050	"	"	"	"	"	"	
Ethylbenzene	ND	0.0050	"	"	"	"	"	"	
Xylenes (total)	ND	0.0050	"	"	"	"	"	"	
Gasoline Range Hydrocarbons	ND	0.50	"	"	"	"	"	"	

Date Sampled: **07/02/12 12:20**

Analyte	Result	Reporting Limit	Units	Dilution	Batch	Prepared	Analyzed	Method	Notes
Surrogate: 1,2-Dichloroethane-d4		109 %	30-150		"	"	"	"	
Surrogate: Toluene-d8		101 %	30-150		"	"	"	"	
Surrogate: 4-Bromofluorobenzene		91.6 %	30-150		"	"	"	"	

**Semivolatile Organic Compounds by EPA Method 8270D SIM**

Date Sampled: **07/02/12 12:20**

Analyte	Result	Reporting Limit	Units	Dilution	Batch	Prepared	Analyzed	Method	Notes
Acenaphthene	ND	5.00	ug/kg	1	2070210	07/02/12	07/03/12	EPA 8270D SIM	
Acenaphthylene	ND	5.00	"	"	"	"	"	"	

Summit Scientific

The results in this report apply to the samples analyzed in accordance with the chain of custody document. This analytical report must be reproduced in its entirety.



LT Environmental, Inc.  
4600 West 60th Avenue  
Arvada CO, 80003

Project: PDC - Easton Property

Project Number: PDC  
Project Manager: Brian Dodek

**Reported:**  
07/10/12 09:17

**SS02**  
**R207019-02 (Soil)**

**Summit Scientific**

**Semivolatile Organic Compounds by EPA Method 8270D SIM**

Analyte	Result	Reporting Limit	Units	Dilution	Batch	Prepared	Analyzed	Method	Notes
Anthracene	ND	5.00	ug/kg	1	2070210	07/02/12	07/03/12	EPA 8270D SIM	
Benzo (a) anthracene	ND	5.00	"	"	"	"	"	"	
Benzo (b) fluoranthene	ND	5.00	"	"	"	"	"	"	
Benzo (k) fluoranthene	ND	5.00	"	"	"	"	"	"	
Benzo (g,h,i) perylene	ND	5.00	"	"	"	"	"	"	
Benzo (a) pyrene	ND	5.00	"	"	"	"	"	"	
Chrysene	ND	5.00	"	"	"	"	"	"	
Dibenz (a,h) anthracene	ND	10.0	"	"	"	"	"	"	
Fluoranthene	ND	5.00	"	"	"	"	"	"	
Fluorene	ND	5.00	"	"	"	"	"	"	
Indeno (1,2,3-cd) pyrene	ND	10.0	"	"	"	"	"	"	
Naphthalene	ND	5.00	"	"	"	"	"	"	
Phenanthrene	ND	5.00	"	"	"	"	"	"	
Pyrene	ND	5.00	"	"	"	"	"	"	

Date Sampled: 07/02/12 12:20

Analyte	Result	Reporting Limit	Units	Dilution	Batch	Prepared	Analyzed	Method	Notes
Surrogate: 2-Methylnaphthalene-d10		92.0 %	50-150		"	"	"	"	
Surrogate: Fluoranthene-d10		102 %	50-150		"	"	"	"	

**Calculated Analytes**

Date Sampled: 07/02/12 12:20

Analyte	Result	Reporting Limit	Units	Dilution	Batch	Prepared	Analyzed	Method	Notes
Chromium+3 Calculated	5.92	1.00	mg/kg	1	2070915	07/09/12	07/09/12	Calculation	

**Total Metals by EPA Method 6020 - Dry Weight Basis**

Date Sampled: 07/02/12 12:20

Analyte	Result	Reporting Limit	Units	Dilution	Batch	Prepared	Analyzed	Method	Notes
Arsenic	2.49	0.100	mg/kg	1	2070301	07/03/12	07/03/12	EPA 6020A	
Barium	62.8	0.100	"	"	"	"	"	"	
Cadmium	0.123	0.100	"	"	"	"	"	"	

Summit Scientific

The results in this report apply to the samples analyzed in accordance with the chain of custody document. This analytical report must be reproduced in its entirety.



LT Environmental, Inc.  
4600 West 60th Avenue  
Arvada CO, 80003

Project: PDC - Easton Property

Project Number: PDC  
Project Manager: Brian Dodek

**Reported:**  
07/10/12 09:17

**SS02**  
**R207019-02 (Soil)**

**Summit Scientific**

**Total Metals by EPA Method 6020 - Dry Weight Basis**

<b>Chromium</b>	<b>6.92</b>	0.100	mg/kg	1	2070301	07/03/12	07/03/12	EPA 6020A	
<b>Copper</b>	<b>5.62</b>	0.500	"	"	"	"	"	"	
<b>Lead</b>	<b>6.47</b>	0.100	"	"	"	"	"	"	
<b>Nickel</b>	<b>7.19</b>	0.100	"	"	"	"	"	"	
Selenium	ND	0.100	"	"	"	"	"	"	
Silver	ND	0.100	"	"	"	"	"	"	
<b>Zinc</b>	<b>25.9</b>	10.0	"	"	"	"	"	"	

**Total Mercury by EPA Method 7471/7470**

Date Sampled: **07/02/12 12:20**

Analyte	Result	Reporting Limit	Units	Dilution	Batch	Prepared	Analyzed	Method	Notes
Mercury	ND	0.0500	mg/kg	1	2070303	07/03/12	07/03/12	EPA 7471B	

**Physical Parameters by APHA/ASTM/EPA Methods**

Date Sampled: **07/02/12 12:20**

Analyte	Result	Reporting Limit	Units	Dilution	Batch	Prepared	Analyzed	Method	Notes
<b>Specific Conductance (EC)</b>	<b>0.332</b>	0.00100	mmhos/cm	1	2070312	07/03/12	07/03/12	SM 2510B	

Date Sampled: **07/02/12 12:20**

Analyte	Result	Reporting Limit	Units	Dilution	Batch	Prepared	Analyzed	Method	Notes
<b>pH</b>	<b>8.3</b>		pH Units	"	2070311	07/03/12	07/03/12	EPA 9045B	

**Soluble Nutrients by EPA 6020/Mod. USDA60 6(2, 3A) - Dry Weight Basis**

Date Sampled: **07/02/12 12:20**

Analyte	Result	Reporting Limit	Units	Dilution	Batch	Prepared	Analyzed	Method	Notes
<b>Calcium</b>	<b>204</b>	2.50	mg/kg	1	2070302	07/03/12	07/03/12	EPA 6020/Mod. USDA60 6(2, 3A)	
<b>Magnesium</b>	<b>23.9</b>	1.00	"	"	"	"	"	"	
<b>Sodium</b>	<b>11.1</b>	7.00	"	"	"	"	"	"	

Summit Scientific

*The results in this report apply to the samples analyzed in accordance with the chain of custody document. This analytical report must be reproduced in its entirety.*





LT Environmental, Inc.  
4600 West 60th Avenue  
Arvada CO, 80003

Project: PDC - Easton Property  
Project Number: PDC  
Project Manager: Brian Dodek

**Reported:**  
07/10/12 09:17

**SS02**  
**R207019-02 (Soil)**

**Summit Scientific**

**Soluble Nutrients by EPA 6020/Mod. USDA60 6(2, 3A) - Dry Weight Basis**

Date Sampled: **07/02/12 12:20**

Analyte	Result	Reporting Limit	Units	Dilution	Batch	Prepared	Analyzed	Method	Notes
Sodium Adsorption Ratio	0.200		units	1	2070317	07/03/12	07/03/12	EPA 6020/Mod. USDA60 6(2, 3A)	

**Accutest Laboratories - 6010 Hexavalent Chromium, Soil (3060A Mod Digest)**

Date Sampled: **07/02/12 12:20**

Analyte	Result	Reporting Limit	Units	Dilution	Batch	Prepared	Analyzed	Method	Notes
Chromium, Hexavalent	ND	1	mg/kg	1	2070915	07/09/12	07/09/12	3060A/7196 A	

Summit Scientific

*The results in this report apply to the samples analyzed in accordance with the chain of custody document. This analytical report must be reproduced in its entirety.*



LT Environmental, Inc.  
4600 West 60th Avenue  
Arvada CO, 80003

Project: PDC - Easton Property  
Project Number: PDC  
Project Manager: Brian Dodek

**Reported:**  
07/10/12 09:17

**SS03**  
**R207019-03 (Soil)**

**Summit Scientific**

**Total Petroleum Hydrocarbons by 8015**

Date Sampled: **07/02/12 12:40**

Analyte	Result	Reporting Limit	Units	Dilution	Batch	Prepared	Analyzed	Method	Notes
C10-C28 (DRO)	ND	50	mg/kg	1	2070212	07/02/12	07/03/12	8015 DRO	

Date Sampled: **07/02/12 12:40**

Analyte	Result	Reporting Limit	Units	Dilution	Batch	Prepared	Analyzed	Method	Notes
Surrogate: <i>o</i> -Terphenyl		112 %	30-150		"	"	"	"	

**Volatile Organic Compounds by EPA Method 8260B**

Date Sampled: **07/02/12 12:40**

Analyte	Result	Reporting Limit	Units	Dilution	Batch	Prepared	Analyzed	Method	Notes
Benzene	ND	0.0050	mg/kg	1	2070211	07/02/12	07/02/12	EPA 8260B	
Toluene	ND	0.0050	"	"	"	"	"	"	
Ethylbenzene	ND	0.0050	"	"	"	"	"	"	
Xylenes (total)	ND	0.0050	"	"	"	"	"	"	
Gasoline Range Hydrocarbons	ND	0.50	"	"	"	"	"	"	

Date Sampled: **07/02/12 12:40**

Analyte	Result	Reporting Limit	Units	Dilution	Batch	Prepared	Analyzed	Method	Notes
Surrogate: 1,2-Dichloroethane-d4		110 %	30-150		"	"	"	"	
Surrogate: Toluene-d8		99.0 %	30-150		"	"	"	"	
Surrogate: 4-Bromofluorobenzene		92.2 %	30-150		"	"	"	"	

**Semivolatile Organic Compounds by EPA Method 8270D SIM**

Date Sampled: **07/02/12 12:40**

Analyte	Result	Reporting Limit	Units	Dilution	Batch	Prepared	Analyzed	Method	Notes
Acenaphthene	ND	5.00	ug/kg	1	2070210	07/02/12	07/03/12	EPA 8270D SIM	
Acenaphthylene	ND	5.00	"	"	"	"	"	"	

Summit Scientific

*The results in this report apply to the samples analyzed in accordance with the chain of custody document. This analytical report must be reproduced in its entirety.*



LT Environmental, Inc.  
4600 West 60th Avenue  
Arvada CO, 80003

Project: PDC - Easton Property

Project Number: PDC  
Project Manager: Brian Dodek

**Reported:**  
07/10/12 09:17

**SS03**  
**R207019-03 (Soil)**

**Summit Scientific**

**Semivolatile Organic Compounds by EPA Method 8270D SIM**

Analyte	Result	Limit	Units	Dilution	Batch	Prepared	Analyzed	Method	Notes
Anthracene	ND	5.00	ug/kg	1	2070210	07/02/12	07/03/12	EPA 8270D SIM	
Benzo (a) anthracene	ND	5.00	"	"	"	"	"	"	
Benzo (b) fluoranthene	ND	5.00	"	"	"	"	"	"	
Benzo (k) fluoranthene	ND	5.00	"	"	"	"	"	"	
Benzo (g,h,i) perylene	ND	5.00	"	"	"	"	"	"	
Benzo (a) pyrene	ND	5.00	"	"	"	"	"	"	
Chrysene	ND	5.00	"	"	"	"	"	"	
Dibenz (a,h) anthracene	ND	10.0	"	"	"	"	"	"	
Fluoranthene	ND	5.00	"	"	"	"	"	"	
Fluorene	ND	5.00	"	"	"	"	"	"	
Indeno (1,2,3-cd) pyrene	ND	10.0	"	"	"	"	"	"	
Naphthalene	ND	5.00	"	"	"	"	"	"	
Phenanthrene	ND	5.00	"	"	"	"	"	"	
Pyrene	ND	5.00	"	"	"	"	"	"	

Date Sampled: 07/02/12 12:40

Analyte	Result	Reporting Limit	Units	Dilution	Batch	Prepared	Analyzed	Method	Notes
Surrogate: 2-Methylnaphthalene-d10		97.9 %	50-150		"	"	"	"	
Surrogate: Fluoranthene-d10		111 %	50-150		"	"	"	"	

**Calculated Analytes**

Date Sampled: 07/02/12 12:40

Analyte	Result	Reporting Limit	Units	Dilution	Batch	Prepared	Analyzed	Method	Notes
Chromium+3 Calculated	6.27	1.00	mg/kg	1	2070915	07/09/12	07/09/12	Calculation	

**Total Metals by EPA Method 6020 - Dry Weight Basis**

Date Sampled: 07/02/12 12:40

Analyte	Result	Reporting Limit	Units	Dilution	Batch	Prepared	Analyzed	Method	Notes
Arsenic	2.46	0.100	mg/kg	1	2070301	07/03/12	07/03/12	EPA 6020A	
Barium	75.6	0.100	"	"	"	"	"	"	
Cadmium	0.155	0.100	"	"	"	"	"	"	

Summit Scientific

The results in this report apply to the samples analyzed in accordance with the chain of custody document. This analytical report must be reproduced in its entirety.



LT Environmental, Inc.  
4600 West 60th Avenue  
Arvada CO, 80003

Project: PDC - Easton Property

Project Number: PDC  
Project Manager: Brian Dodek

Reported:  
07/10/12 09:17

**SS03**  
**R207019-03 (Soil)**

**Summit Scientific**

**Total Metals by EPA Method 6020 - Dry Weight Basis**

Chromium	7.27	0.100	mg/kg	1	2070301	07/03/12	07/03/12	EPA 6020A	
Copper	5.70	0.500	"	"	"	"	"	"	
Lead	7.08	0.100	"	"	"	"	"	"	
Nickel	6.94	0.100	"	"	"	"	"	"	
Selenium	0.102	0.100	"	"	"	"	"	"	
Silver	ND	0.100	"	"	"	"	"	"	
Zinc	24.5	10.0	"	"	"	"	"	"	

**Total Mercury by EPA Method 7471/7470**

Date Sampled: 07/02/12 12:40

Analyte	Result	Reporting Limit	Units	Dilution	Batch	Prepared	Analyzed	Method	Notes
Mercury	ND	0.0500	mg/kg	1	2070303	07/03/12	07/03/12	EPA 7471B	

**Physical Parameters by APHA/ASTM/EPA Methods**

Date Sampled: 07/02/12 12:40

Analyte	Result	Reporting Limit	Units	Dilution	Batch	Prepared	Analyzed	Method	Notes
Specific Conductance (EC)	0.176	0.00100	mmhos/cm	1	2070312	07/03/12	07/03/12	SM 2510B	

Date Sampled: 07/02/12 12:40

Analyte	Result	Reporting Limit	Units	Dilution	Batch	Prepared	Analyzed	Method	Notes
pH	7.8		pH Units	"	2070311	07/03/12	07/03/12	EPA 9045B	

**Soluble Nutrients by EPA 6020/Mod. USDA60 6(2, 3A) - Dry Weight Basis**

Date Sampled: 07/02/12 12:40

Analyte	Result	Reporting Limit	Units	Dilution	Batch	Prepared	Analyzed	Method	Notes
Calcium	25.9	2.50	mg/kg	1	2070302	07/03/12	07/03/12	EPA 6020/Mod. USDA60 6(2, 3A)	
Magnesium	10.9	1.00	"	"	"	"	"	"	
Sodium	8.76	7.00	"	"	"	"	"	"	

Summit Scientific

The results in this report apply to the samples analyzed in accordance with the chain of custody document. This analytical report must be reproduced in its entirety.



LT Environmental, Inc.  
4600 West 60th Avenue  
Arvada CO, 80003

Project: PDC - Easton Property  
Project Number: PDC  
Project Manager: Brian Dodek

**Reported:**  
07/10/12 09:17

**SS03**  
**R207019-03 (Soil)**

**Summit Scientific**

**Soluble Nutrients by EPA 6020/Mod. USDA60 6(2, 3A) - Dry Weight Basis**

Date Sampled: **07/02/12 12:40**

Analyte	Result	Reporting Limit	Units	Dilution	Batch	Prepared	Analyzed	Method	Notes
Sodium Adsorption Ratio	0.360		units	1	2070317	07/03/12	07/03/12	EPA 6020/Mod. USDA60 6(2, 3A)	

**Accutest Laboratories - 6010 Hexavalent Chromium, Soil (3060A Mod Digest)**

Date Sampled: **07/02/12 12:40**

Analyte	Result	Reporting Limit	Units	Dilution	Batch	Prepared	Analyzed	Method	Notes
Chromium, Hexavalent	ND	1	mg/kg	1	2070915	07/09/12	07/09/12	3060A/7196 A	

Summit Scientific

*The results in this report apply to the samples analyzed in accordance with the chain of custody document. This analytical report must be reproduced in its entirety.*



LT Environmental, Inc.  
4600 West 60th Avenue  
Arvada CO, 80003

Project: PDC - Easton Property

Project Number: PDC  
Project Manager: Brian Dodek

**Reported:**  
07/10/12 09:17

**SS04**  
**R207019-04 (Soil)**

**Summit Scientific**

**Total Metals by EPA Method 6020 - Dry Weight Basis**

Date Sampled: **07/02/12 13:00**

Analyte	Result	Reporting Limit	Units	Dilution	Batch	Prepared	Analyzed	Method	Notes
Arsenic	1.97	0.100	mg/kg	1	2070301	07/03/12	07/03/12	EPA 6020	

Summit Scientific

*The results in this report apply to the samples analyzed in accordance with the chain of custody document. This analytical report must be reproduced in its entirety.*





LT Environmental, Inc.  
4600 West 60th Avenue  
Arvada CO, 80003

Project: PDC - Easton Property

Project Number: PDC  
Project Manager: Brian Dodek

**Reported:**  
07/10/12 09:17

**SS05**  
**R207019-05 (Soil)**

**Summit Scientific**

**Total Metals by EPA Method 6020 - Dry Weight Basis**

Date Sampled: **07/02/12 13:15**

Analyte	Result	Reporting Limit	Units	Dilution	Batch	Prepared	Analyzed	Method	Notes
Arsenic	3.18	0.100	mg/kg	1	2070301	07/03/12	07/03/12	EPA 6020	

Summit Scientific

*The results in this report apply to the samples analyzed in accordance with the chain of custody document. This analytical report must be reproduced in its entirety.*



LT Environmental, Inc.  
4600 West 60th Avenue  
Arvada CO, 80003

Project: PDC - Easton Property  
Project Number: PDC  
Project Manager: Brian Dodek

Reported:  
07/10/12 09:17

**SS06**  
**R207019-06 (Soil)**

**Summit Scientific**

**Total Petroleum Hydrocarbons by 8015**

Date Sampled: **07/02/12 13:35**

Analyte	Result	Reporting Limit	Units	Dilution	Batch	Prepared	Analyzed	Method	Notes
C10-C28 (DRO)	ND	50	mg/kg	1	2070212	07/02/12	07/03/12	8015 DRO	

Date Sampled: **07/02/12 13:35**

Analyte	Result	Reporting Limit	Units	Dilution	Batch	Prepared	Analyzed	Method	Notes
Surrogate: o-Terphenyl		104 %	30-150		"	"	"	"	

**Volatile Organic Compounds by EPA Method 8260B**

Date Sampled: **07/02/12 13:35**

Analyte	Result	Reporting Limit	Units	Dilution	Batch	Prepared	Analyzed	Method	Notes
Benzene	ND	0.0050	mg/kg	1	2070211	07/02/12	07/02/12	EPA 8260B	
Toluene	ND	0.0050	"	"	"	"	"	"	
Ethylbenzene	ND	0.0050	"	"	"	"	"	"	
Xylenes (total)	ND	0.0050	"	"	"	"	"	"	
Gasoline Range Hydrocarbons	ND	0.50	"	"	"	"	"	"	

Date Sampled: **07/02/12 13:35**

Analyte	Result	Reporting Limit	Units	Dilution	Batch	Prepared	Analyzed	Method	Notes
Surrogate: 1,2-Dichloroethane-d4		115 %	30-150		"	"	"	"	
Surrogate: Toluene-d8		100 %	30-150		"	"	"	"	
Surrogate: 4-Bromofluorobenzene		93.5 %	30-150		"	"	"	"	

**Semivolatile Organic Compounds by EPA Method 8270D SIM**

Date Sampled: **07/02/12 13:35**

Analyte	Result	Reporting Limit	Units	Dilution	Batch	Prepared	Analyzed	Method	Notes
Acenaphthene	ND	5.00	ug/kg	1	2070210	07/02/12	07/03/12	EPA 8270D SIM	
Acenaphthylene	ND	5.00	"	"	"	"	"	"	

Summit Scientific

The results in this report apply to the samples analyzed in accordance with the chain of custody document. This analytical report must be reproduced in its entirety.



LT Environmental, Inc.  
4600 West 60th Avenue  
Arvada CO, 80003

Project: PDC - Easton Property

Project Number: PDC  
Project Manager: Brian Dodek

**Reported:**  
07/10/12 09:17

**SS06**  
**R207019-06 (Soil)**

**Summit Scientific**

**Semivolatile Organic Compounds by EPA Method 8270D SIM**

Analyte	Result	Limit	Units	Dilution	Batch	Prepared	Analyzed	Method	Notes
Anthracene	ND	5.00	ug/kg	1	2070210	07/02/12	07/03/12	EPA 8270D SIM	
Benzo (a) anthracene	ND	5.00	"	"	"	"	"	"	
Benzo (b) fluoranthene	ND	5.00	"	"	"	"	"	"	
Benzo (k) fluoranthene	ND	5.00	"	"	"	"	"	"	
Benzo (g,h,i) perylene	ND	5.00	"	"	"	"	"	"	
Benzo (a) pyrene	ND	5.00	"	"	"	"	"	"	
Chrysene	ND	5.00	"	"	"	"	"	"	
Dibenz (a,h) anthracene	ND	10.0	"	"	"	"	"	"	
Fluoranthene	ND	5.00	"	"	"	"	"	"	
Fluorene	ND	5.00	"	"	"	"	"	"	
Indeno (1,2,3-cd) pyrene	ND	10.0	"	"	"	"	"	"	
Naphthalene	ND	5.00	"	"	"	"	"	"	
Phenanthrene	ND	5.00	"	"	"	"	"	"	
Pyrene	ND	5.00	"	"	"	"	"	"	

Date Sampled: 07/02/12 13:35

Analyte	Result	Reporting Limit	Units	Dilution	Batch	Prepared	Analyzed	Method	Notes
Surrogate: 2-Methylnaphthalene-d10		92.0 %	50-150		"	"	"	"	
Surrogate: Fluoranthene-d10		101 %	50-150		"	"	"	"	

**Calculated Analytes**

Date Sampled: 07/02/12 13:35

Analyte	Result	Reporting Limit	Units	Dilution	Batch	Prepared	Analyzed	Method	Notes
Chromium+3 Calculated	8.74	1.00	mg/kg	1	2070915	07/09/12	07/09/12	Calculation	

**Total Metals by EPA Method 6020 - Dry Weight Basis**

Date Sampled: 07/02/12 13:35

Analyte	Result	Reporting Limit	Units	Dilution	Batch	Prepared	Analyzed	Method	Notes
Arsenic	2.89	0.100	mg/kg	1	2070301	07/03/12	07/03/12	EPA 6020A	
Barium	94.7	0.100	"	"	"	"	"	"	
Cadmium	0.397	0.100	"	"	"	"	"	"	

Summit Scientific

The results in this report apply to the samples analyzed in accordance with the chain of custody document. This analytical report must be reproduced in its entirety.



LT Environmental, Inc.  
4600 West 60th Avenue  
Arvada CO, 80003

Project: PDC - Easton Property

Project Number: PDC  
Project Manager: Brian Dodek

**Reported:**  
07/10/12 09:17

**SS06**  
**R207019-06 (Soil)**

**Summit Scientific**

**Total Metals by EPA Method 6020 - Dry Weight Basis**

Chromium	9.74	0.100	mg/kg	1	2070301	07/03/12	07/03/12	EPA 6020A	
Copper	12.9	0.500	"	"	"	"	"	"	
Lead	10.8	0.100	"	"	"	"	"	"	
Nickel	13.8	0.100	"	"	"	"	"	"	
Selenium	0.219	0.100	"	"	"	"	"	"	
Silver	ND	0.100	"	"	"	"	"	"	
Zinc	57.0	10.0	"	"	"	"	"	"	

**Total Mercury by EPA Method 7471/7470**

Date Sampled: 07/02/12 13:35

Analyte	Result	Reporting Limit	Units	Dilution	Batch	Prepared	Analyzed	Method	Notes
Mercury	ND	0.0500	mg/kg	1	2070303	07/03/12	07/03/12	EPA 7471B	

**Physical Parameters by APHA/ASTM/EPA Methods**

Date Sampled: 07/02/12 13:35

Analyte	Result	Reporting Limit	Units	Dilution	Batch	Prepared	Analyzed	Method	Notes
Specific Conductance (EC)	0.449	0.00100	mmhos/cm	1	2070312	07/03/12	07/03/12	SM 2510B	

Date Sampled: 07/02/12 13:35

Analyte	Result	Reporting Limit	Units	Dilution	Batch	Prepared	Analyzed	Method	Notes
pH	8.5		pH Units	"	2070311	07/03/12	07/03/12	EPA 9045B	

**Soluble Nutrients by EPA 6020/Mod. USDA60 6(2, 3A) - Dry Weight Basis**

Date Sampled: 07/02/12 13:35

Analyte	Result	Reporting Limit	Units	Dilution	Batch	Prepared	Analyzed	Method	Notes
Calcium	450	2.50	mg/kg	1	2070302	07/03/12	07/03/12	EPA 6020/Mod. USDA60 6(2, 3A)	
Magnesium	76.0	1.00	"	"	"	"	"	"	
Sodium	65.2	7.00	"	"	"	"	"	"	

Summit Scientific

The results in this report apply to the samples analyzed in accordance with the chain of custody document. This analytical report must be reproduced in its entirety.



LT Environmental, Inc.  
4600 West 60th Avenue  
Arvada CO, 80003

Project: PDC - Easton Property  
Project Number: PDC  
Project Manager: Brian Dodek

**Reported:**  
07/10/12 09:17

**SS06**  
**R207019-06 (Soil)**

**Summit Scientific**

**Soluble Nutrients by EPA 6020/Mod. USDA60 6(2, 3A) - Dry Weight Basis**

Date Sampled: **07/02/12 13:35**

Analyte	Result	Reporting Limit	Units	Dilution	Batch	Prepared	Analyzed	Method	Notes
Sodium Adsorption Ratio	0.750		units	1	2070317	07/03/12	07/03/12	EPA 6020/Mod. USDA60 6(2, 3A)	

**Accutest Laboratories - 6010 Hexavalent Chromium, Soil (3060A Mod Digest)**

Date Sampled: **07/02/12 13:35**

Analyte	Result	Reporting Limit	Units	Dilution	Batch	Prepared	Analyzed	Method	Notes
Chromium, Hexavalent	ND	1	mg/kg	1	2070915	07/09/12	07/09/12	3060A/7196 A	

Summit Scientific

*The results in this report apply to the samples analyzed in accordance with the chain of custody document. This analytical report must be reproduced in its entirety.*



LT Environmental, Inc.  
4600 West 60th Avenue  
Arvada CO, 80003

Project: PDC - Easton Property  
Project Number: PDC  
Project Manager: Brian Dodek

**Reported:**  
07/10/12 09:17

**SS07**  
**R207019-07 (Soil)**

**Summit Scientific**

**Total Petroleum Hydrocarbons by 8015**

Date Sampled: **07/02/12 13:55**

Analyte	Result	Reporting Limit	Units	Dilution	Batch	Prepared	Analyzed	Method	Notes
C10-C28 (DRO)	ND	50	mg/kg	1	2070212	07/02/12	07/03/12	8015 DRO	

Date Sampled: **07/02/12 13:55**

Analyte	Result	Reporting Limit	Units	Dilution	Batch	Prepared	Analyzed	Method	Notes
Surrogate: <i>o</i> -Terphenyl		100 %	30-150		"	"	"	"	

**Volatile Organic Compounds by EPA Method 8260B**

Date Sampled: **07/02/12 13:55**

Analyte	Result	Reporting Limit	Units	Dilution	Batch	Prepared	Analyzed	Method	Notes
Benzene	ND	0.0050	mg/kg	1	2070211	07/02/12	07/02/12	EPA 8260B	
Toluene	ND	0.0050	"	"	"	"	"	"	
Ethylbenzene	ND	0.0050	"	"	"	"	"	"	
Xylenes (total)	ND	0.0050	"	"	"	"	"	"	
Gasoline Range Hydrocarbons	ND	0.50	"	"	"	"	"	"	

Date Sampled: **07/02/12 13:55**

Analyte	Result	Reporting Limit	Units	Dilution	Batch	Prepared	Analyzed	Method	Notes
Surrogate: 1,2-Dichloroethane-d4		114 %	30-150		"	"	"	"	
Surrogate: Toluene-d8		99.1 %	30-150		"	"	"	"	
Surrogate: 4-Bromofluorobenzene		92.2 %	30-150		"	"	"	"	

**Semivolatile Organic Compounds by EPA Method 8270D SIM**

Date Sampled: **07/02/12 13:55**

Analyte	Result	Reporting Limit	Units	Dilution	Batch	Prepared	Analyzed	Method	Notes
Acenaphthene	ND	5.00	ug/kg	1	2070210	07/02/12	07/03/12	EPA 8270D SIM	
Acenaphthylene	ND	5.00	"	"	"	"	"	"	

Summit Scientific

The results in this report apply to the samples analyzed in accordance with the chain of custody document. This analytical report must be reproduced in its entirety.





LT Environmental, Inc.  
4600 West 60th Avenue  
Arvada CO, 80003

Project: PDC - Easton Property

Project Number: PDC  
Project Manager: Brian Dodek

Reported:  
07/10/12 09:17

**SS07**  
**R207019-07 (Soil)**

**Summit Scientific**

**Semivolatile Organic Compounds by EPA Method 8270D SIM**

Analyte	Result	Limit	Units	Dilution	Batch	Prepared	Analyzed	Method	Notes
Anthracene	ND	5.00	ug/kg	1	2070210	07/02/12	07/03/12	EPA 8270D SIM	
Benzo (a) anthracene	ND	5.00	"	"	"	"	"	"	
Benzo (b) fluoranthene	ND	5.00	"	"	"	"	"	"	
Benzo (k) fluoranthene	ND	5.00	"	"	"	"	"	"	
Benzo (g,h,i) perylene	ND	5.00	"	"	"	"	"	"	
Benzo (a) pyrene	ND	5.00	"	"	"	"	"	"	
Chrysene	ND	5.00	"	"	"	"	"	"	
Dibenz (a,h) anthracene	ND	10.0	"	"	"	"	"	"	
Fluoranthene	ND	5.00	"	"	"	"	"	"	
Fluorene	ND	5.00	"	"	"	"	"	"	
Indeno (1,2,3-cd) pyrene	ND	10.0	"	"	"	"	"	"	
Naphthalene	ND	5.00	"	"	"	"	"	"	
Phenanthrene	ND	5.00	"	"	"	"	"	"	
Pyrene	ND	5.00	"	"	"	"	"	"	

Date Sampled: 07/02/12 13:55

Analyte	Result	Reporting Limit	Units	Dilution	Batch	Prepared	Analyzed	Method	Notes
Surrogate: 2-Methylnaphthalene-d10		94.8 %	50-150		"	"	"	"	
Surrogate: Fluoranthene-d10		107 %	50-150		"	"	"	"	

**Calculated Analytes**

Date Sampled: 07/02/12 13:55

Analyte	Result	Reporting Limit	Units	Dilution	Batch	Prepared	Analyzed	Method	Notes
Chromium+3 Calculated	7.88	1.00	mg/kg	1	2070915	07/09/12	07/09/12	Calculation	

**Total Metals by EPA Method 6020 - Dry Weight Basis**

Date Sampled: 07/02/12 13:55

Analyte	Result	Reporting Limit	Units	Dilution	Batch	Prepared	Analyzed	Method	Notes
Arsenic	4.40	0.100	mg/kg	1	2070301	07/03/12	07/03/12	EPA 6020A	
Barium	104	0.100	"	"	"	"	"	"	
Cadmium	0.297	0.100	"	"	"	"	"	"	

Summit Scientific

The results in this report apply to the samples analyzed in accordance with the chain of custody document. This analytical report must be reproduced in its entirety.



LT Environmental, Inc.  
4600 West 60th Avenue  
Arvada CO, 80003

Project: PDC - Easton Property

Project Number: PDC  
Project Manager: Brian Dodek

**Reported:**  
07/10/12 09:17

**SS07**  
**R207019-07 (Soil)**

**Summit Scientific**

**Total Metals by EPA Method 6020 - Dry Weight Basis**

<b>Chromium</b>	<b>8.88</b>	0.100	mg/kg	1	2070301	07/03/12	07/03/12	EPA 6020A	
<b>Copper</b>	<b>11.2</b>	0.500	"	"	"	"	"	"	
<b>Lead</b>	<b>11.1</b>	0.100	"	"	"	"	"	"	
<b>Nickel</b>	<b>10.9</b>	0.100	"	"	"	"	"	"	
<b>Selenium</b>	<b>0.209</b>	0.100	"	"	"	"	"	"	
<b>Silver</b>	<b>ND</b>	0.100	"	"	"	"	"	"	
<b>Zinc</b>	<b>44.7</b>	10.0	"	"	"	"	"	"	

**Total Mercury by EPA Method 7471/7470**

Date Sampled: **07/02/12 13:55**

Analyte	Result	Reporting Limit	Units	Dilution	Batch	Prepared	Analyzed	Method	Notes
Mercury	ND	0.0500	mg/kg	1	2070303	07/03/12	07/03/12	EPA 7471B	

**Physical Parameters by APHA/ASTM/EPA Methods**

Date Sampled: **07/02/12 13:55**

Analyte	Result	Reporting Limit	Units	Dilution	Batch	Prepared	Analyzed	Method	Notes
<b>Specific Conductance (EC)</b>	<b>0.644</b>	0.00100	mmhos/cm	1	2070312	07/03/12	07/03/12	SM 2510B	

Date Sampled: **07/02/12 13:55**

Analyte	Result	Reporting Limit	Units	Dilution	Batch	Prepared	Analyzed	Method	Notes
<b>pH</b>	<b>8.3</b>		pH Units	"	2070311	07/03/12	07/03/12	EPA 9045B	

**Soluble Nutrients by EPA 6020/Mod. USDA60 6(2, 3A) - Dry Weight Basis**

Date Sampled: **07/02/12 13:55**

Analyte	Result	Reporting Limit	Units	Dilution	Batch	Prepared	Analyzed	Method	Notes
<b>Calcium</b>	<b>281</b>	2.50	mg/kg	1	2070302	07/03/12	07/03/12	EPA 6020/Mod. USDA60 6(2, 3A)	
<b>Magnesium</b>	<b>46.0</b>	1.00	"	"	"	"	"	"	
<b>Sodium</b>	<b>48.0</b>	7.00	"	"	"	"	"	"	

Summit Scientific

*The results in this report apply to the samples analyzed in accordance with the chain of custody document. This analytical report must be reproduced in its entirety.*



LT Environmental, Inc.  
4600 West 60th Avenue  
Arvada CO, 80003

Project: PDC - Easton Property  
Project Number: PDC  
Project Manager: Brian Dodek

**Reported:**  
07/10/12 09:17

**SS07**  
**R207019-07 (Soil)**

**Summit Scientific**

**Soluble Nutrients by EPA 6020/Mod. USDA60 6(2, 3A) - Dry Weight Basis**

Date Sampled: **07/02/12 13:55**

Analyte	Result	Reporting Limit	Units	Dilution	Batch	Prepared	Analyzed	Method	Notes
Sodium Adsorption Ratio	0.700		units	1	2070317	07/03/12	07/03/12	EPA 6020/Mod. USDA60 6(2, 3A)	

**Accutest Laboratories - 6010 Hexavalent Chromium, Soil (3060A Mod Digest)**

Date Sampled: **07/02/12 13:55**

Analyte	Result	Reporting Limit	Units	Dilution	Batch	Prepared	Analyzed	Method	Notes
Chromium, Hexavalent	ND	1	mg/kg	1	2070915	07/09/12	07/09/12	3060A/7196 A	

Summit Scientific

*The results in this report apply to the samples analyzed in accordance with the chain of custody document. This analytical report must be reproduced in its entirety.*



LT Environmental, Inc.  
4600 West 60th Avenue  
Arvada CO, 80003

Project: PDC - Easton Property

Project Number: PDC  
Project Manager: Brian Dodek

**Reported:**  
07/10/12 09:17

**SS08**  
**R207019-08 (Soil)**

**Summit Scientific**

**Total Metals by EPA Method 6020 - Dry Weight Basis**

Date Sampled: **07/02/12 14:10**

Analyte	Result	Reporting Limit	Units	Dilution	Batch	Prepared	Analyzed	Method	Notes
Arsenic	2.63	0.100	mg/kg	1	2070301	07/03/12	07/03/12	EPA 6020	

Summit Scientific

*The results in this report apply to the samples analyzed in accordance with the chain of custody document. This analytical report must be reproduced in its entirety.*



LT Environmental, Inc.  
4600 West 60th Avenue  
Arvada CO, 80003

Project: PDC - Easton Property  
Project Number: PDC  
Project Manager: Brian Dodek

**Reported:**  
07/10/12 09:17

**Total Petroleum Hydrocarbons by 8015 - Quality Control**  
**Summit Scientific**

Analyte	Reporting			Spike	Source	%REC		RPD		
	Result	Limit	Units	Level	Result	%REC	Limits	RPD	Limit	Notes

**Batch 2070212 - EPA 3550A**

**Blank (2070212-BLK1)**

Prepared: 07/02/12 Analyzed: 07/03/12

C10-C28 (DRO) ND 50 mg/kg

**LCS (2070212-BS1)**

Prepared: 07/02/12 Analyzed: 07/03/12

C10-C28 (DRO) 599 50 mg/kg 501 119 79.3-126

**LCS Dup (2070212-BSD1)**

Prepared: 07/02/12 Analyzed: 07/03/12

C10-C28 (DRO) 579 50 mg/kg 501 116 79.3-126 3.34 11

**Matrix Spike (2070212-MS1)**

**Source: R207014-01**

Prepared: 07/02/12 Analyzed: 07/03/12

C10-C28 (DRO) 585 50 mg/kg 501 ND 117 45.1-150

**Matrix Spike Dup (2070212-MSD1)**

**Source: R207014-01**

Prepared: 07/02/12 Analyzed: 07/03/12

C10-C28 (DRO) 591 50 mg/kg 501 ND 118 45.1-150 1.00 25

Summit Scientific

*The results in this report apply to the samples analyzed in accordance with the chain of custody document. This analytical report must be reproduced in its entirety.*



LT Environmental, Inc.  
4600 West 60th Avenue  
Arvada CO, 80003

Project: PDC - Easton Property  
Project Number: PDC  
Project Manager: Brian Dodek

**Reported:**  
07/10/12 09:17

**Volatile Organic Compounds by EPA Method 8260B - Quality Control**  
**Summit Scientific**

Analyte	Reporting			Spike	Source		%REC		RPD	
	Result	Limit	Units	Level	Result	%REC	Limits	RPD	Limit	Notes

**Batch 2070211 - EPA 5030 Soil MS**

**Blank (2070211-BLK1)**

Prepared: 07/02/12 Analyzed: 07/03/12

Benzene	ND	0.0050	mg/kg							
Toluene	ND	0.0050	"							
Ethylbenzene	ND	0.0050	"							
Xylenes (total)	ND	0.0050	"							
Gasoline Range Hydrocarbons	ND	0.50	"							
Surrogate: 1,2-Dichloroethane-d4	0.0386		"	0.0397	97.1	30-150				
Surrogate: Toluene-d8	0.0399		"	0.0400	99.8	30-150				
Surrogate: 4-Bromofluorobenzene	0.0392		"	0.0400	98.1	30-150				

**LCS (2070211-BS1)**

Prepared: 07/02/12 Analyzed: 07/03/12

Benzene	0.143	0.0050	mg/kg	0.150	95.5	58.1-115				
Toluene	0.154	0.0050	"	0.150	103	56.7-123				
Ethylbenzene	0.154	0.0050	"	0.150	102	61.4-138				
m,p-Xylene	0.303	0.010	"	0.300	101	63.6-128				
o-Xylene	0.154	0.0050	"	0.150	103	62.6-134				
Surrogate: 1,2-Dichloroethane-d4	0.0397		"	0.0397	100	30-150				
Surrogate: Toluene-d8	0.0410		"	0.0400	102	30-150				
Surrogate: 4-Bromofluorobenzene	0.0406		"	0.0400	102	30-150				

**LCS Dup (2070211-BSD1)**

Prepared: 07/02/12 Analyzed: 07/03/12

Benzene	0.145	0.0050	mg/kg	0.150	96.8	58.1-115	1.27	20		
Toluene	0.155	0.0050	"	0.150	104	56.7-123	1.03	20		
Ethylbenzene	0.153	0.0050	"	0.150	102	61.4-138	0.235	12.2		
m,p-Xylene	0.301	0.010	"	0.300	100	63.6-128	0.785	13.2		
o-Xylene	0.153	0.0050	"	0.150	102	62.6-134	0.839	12.2		
Surrogate: 1,2-Dichloroethane-d4	0.0414		"	0.0397	104	30-150				
Surrogate: Toluene-d8	0.0410		"	0.0400	102	30-150				
Surrogate: 4-Bromofluorobenzene	0.0408		"	0.0400	102	30-150				

Summit Scientific

The results in this report apply to the samples analyzed in accordance with the chain of custody document. This analytical report must be reproduced in its entirety.



LT Environmental, Inc.  
4600 West 60th Avenue  
Arvada CO, 80003

Project: PDC - Easton Property  
Project Number: PDC  
Project Manager: Brian Dodek

**Reported:**  
07/10/12 09:17

**Volatile Organic Compounds by EPA Method 8260B - Quality Control**  
**Summit Scientific**

Analyte	Reporting			Spike	Source		%REC		RPD	
	Result	Limit	Units	Level	Result	%REC	Limits	RPD	Limit	Notes

**Batch 2070211 - EPA 5030 Soil MS**

<b>Matrix Spike (2070211-MS1)</b>		<b>Source: R207014-01</b>			<b>Prepared: 07/02/12</b>		<b>Analyzed: 07/03/12</b>			
Benzene	0.114	0.0050	mg/kg	0.150	0.00108	75.1	47.2-120			
Toluene	0.114	0.0050	"	0.150	ND	75.9	47.7-125			
Ethylbenzene	0.103	0.0050	"	0.150	ND	68.9	34.5-150			
m,p-Xylene	0.205	0.010	"	0.300	ND	68.5	30-150			
o-Xylene	0.107	0.0050	"	0.150	ND	71.6	30-150			
Surrogate: 1,2-Dichloroethane-d4	0.0446		"	0.0397		112	30-150			
Surrogate: Toluene-d8	0.0406		"	0.0400		101	30-150			
Surrogate: 4-Bromofluorobenzene	0.0408		"	0.0400		102	30-150			
<b>Matrix Spike Dup (2070211-MSD1)</b>		<b>Source: R207014-01</b>			<b>Prepared: 07/02/12</b>		<b>Analyzed: 07/03/12</b>			
Benzene	0.107	0.0050	mg/kg	0.150	0.00108	70.5	47.2-120	6.28	15.1	
Toluene	0.102	0.0050	"	0.150	ND	68.0	47.7-125	11.1	16.8	
Ethylbenzene	0.0852	0.0050	"	0.150	ND	56.8	34.5-150	19.2	10.1	
m,p-Xylene	0.169	0.010	"	0.300	ND	56.2	30-150	19.7	17.2	
o-Xylene	0.0898	0.0050	"	0.150	ND	59.9	30-150	17.8	15.2	
Surrogate: 1,2-Dichloroethane-d4	0.0431		"	0.0397		109	30-150			
Surrogate: Toluene-d8	0.0398		"	0.0400		99.4	30-150			
Surrogate: 4-Bromofluorobenzene	0.0418		"	0.0400		104	30-150			

Summit Scientific

*The results in this report apply to the samples analyzed in accordance with the chain of custody document. This analytical report must be reproduced in its entirety.*



LT Environmental, Inc.  
4600 West 60th Avenue  
Arvada CO, 80003

Project: PDC - Easton Property  
Project Number: PDC  
Project Manager: Brian Dodek

**Reported:**  
07/10/12 09:17

**Semivolatile Organic Compounds by EPA Method 8270D SIM - Quality Control**  
**Summit Scientific**

Analyte	Reporting			Spike	Source		%REC		RPD	
	Result	Limit	Units	Level	Result	%REC	Limits	RPD	Limit	Notes

**Batch 2070210 - EPA 3550A**

**Blank (2070210-BLK1)**

Prepared: 07/02/12 Analyzed: 07/03/12

Acenaphthene	ND	5.00	ug/kg
Acenaphthylene	ND	5.00	"
Anthracene	ND	5.00	"
Benzo (a) anthracene	ND	5.00	"
Benzo (b) fluoranthene	ND	5.00	"
Benzo (k) fluoranthene	ND	5.00	"
Benzo (g,h,i) perylene	ND	5.00	"
Benzo (a) pyrene	ND	5.00	"
Chrysene	ND	5.00	"
Dibenz (a,h) anthracene	ND	10.0	"
Fluoranthene	ND	5.00	"
Fluorene	ND	5.00	"
Indeno (1,2,3-cd) pyrene	ND	10.0	"
Naphthalene	ND	5.00	"
Phenanthrene	ND	5.00	"
Pyrene	ND	5.00	"

Surrogate: 2-Methylnaphthalene-d10

26.3 " 31.3 83.9 50-150

Surrogate: Fluoranthene-d10

23.9 " 31.1 76.8 50-150

**LCS (2070210-BS1)**

Prepared: 07/02/12 Analyzed: 07/03/12

Acenaphthene	27.6	5.00	ug/kg	33.3	82.7	58-128
Acenaphthylene	27.0	5.00	"	33.3	81.0	60.6-126
Anthracene	27.6	5.00	"	33.3	82.7	58.3-133
Benzo (a) anthracene	24.6	5.00	"	33.3	73.7	56.3-132
Benzo (b) fluoranthene	20.5	5.00	"	33.3	61.5	50.3-131
Benzo (k) fluoranthene	24.6	5.00	"	33.3	73.7	48.6-130
Benzo (g,h,i) perylene	20.1	5.00	"	33.3	60.2	51.9-125
Benzo (a) pyrene	25.3	5.00	"	33.3	76.0	57.4-128
Chrysene	24.2	5.00	"	33.3	72.6	55.5-117
Dibenz (a,h) anthracene	17.6	10.0	"	33.3	52.9	46.9-124
Fluoranthene	28.0	5.00	"	33.3	83.9	58-138
Fluorene	27.4	5.00	"	33.3	82.3	64.2-123
Indeno (1,2,3-cd) pyrene	25.6	10.0	"	33.3	76.7	35.5-147
Naphthalene	26.5	5.00	"	33.3	79.6	60.1-122
Phenanthrene	27.0	5.00	"	33.3	80.9	58-127
Pyrene	26.5	5.00	"	33.3	79.6	53.9-129

Surrogate: 2-Methylnaphthalene-d10

26.1 " 31.3 83.4 50-150

Surrogate: Fluoranthene-d10

25.0 " 31.1 80.6 50-150

Summit Scientific

The results in this report apply to the samples analyzed in accordance with the chain of custody document. This analytical report must be reproduced in its entirety.





LT Environmental, Inc.  
4600 West 60th Avenue  
Arvada CO, 80003

Project: PDC - Easton Property  
Project Number: PDC  
Project Manager: Brian Dodek

Reported:  
07/10/12 09:17

**Semivolatile Organic Compounds by EPA Method 8270D SIM - Quality Control**  
**Summit Scientific**

Analyte	Reporting			Spike	Source		%REC		RPD	
	Result	Limit	Units	Level	Result	%REC	Limits	RPD	Limit	Notes

**Batch 2070210 - EPA 3550A**

**LCS Dup (2070210-BSD1)**

Prepared: 07/02/12 Analyzed: 07/03/12

Acenaphthene	26.5	5.00	ug/kg	33.3		79.6	58-128	3.82	17.2	
Acenaphthylene	27.2	5.00	"	33.3		81.6	60.6-126	0.722	18	
Anthracene	26.9	5.00	"	33.3		80.7	58.3-133	2.47	17.5	
Benzo (a) anthracene	24.7	5.00	"	33.3		74.2	56.3-132	0.649	16	
Benzo (b) fluoranthene	21.7	5.00	"	33.3		65.1	50.3-131	5.67	14.8	
Benzo (k) fluoranthene	23.6	5.00	"	33.3		70.9	48.6-130	3.88	20	
Benzo (g,h,i) perylene	21.2	5.00	"	33.3		63.5	51.9-125	5.26	20	
Benzo (a) pyrene	28.0	5.00	"	33.3		84.1	57.4-128	10.1	16.5	
Chrysene	23.3	5.00	"	33.3		70.0	55.5-117	3.67	15.2	
Dibenz (a,h) anthracene	17.3	10.0	"	33.3		51.9	46.9-124	1.84	20	
Fluoranthene	26.7	5.00	"	33.3		80.0	58-138	4.66	16.5	
Fluorene	26.8	5.00	"	33.3		80.4	64.2-123	2.40	18.5	
Indeno (1,2,3-cd) pyrene	25.0	10.0	"	33.3		75.1	35.5-147	2.05	20	
Naphthalene	25.7	5.00	"	33.3		77.1	60.1-122	3.19	17.8	
Phenanthrene	25.9	5.00	"	33.3		77.6	58-127	4.24	17	
Pyrene	25.6	5.00	"	33.3		76.8	53.9-129	3.52	20	
Surrogate: 2-Methylnaphthalene-d10	25.6		"	31.3		81.6	50-150			
Surrogate: Fluoranthene-d10	24.7		"	31.1		79.4	50-150			

**Matrix Spike (2070210-MS1)**

Source: R207019-02

Prepared: 07/02/12 Analyzed: 07/03/12

Acenaphthene	26.9	5.00	ug/kg	33.3	ND	80.7	30-150			
Acenaphthylene	28.4	5.00	"	33.3	ND	85.3	52.1-122			
Anthracene	28.3	5.00	"	33.3	ND	85.0	36.5-130			
Benzo (a) anthracene	33.2	5.00	"	33.3	ND	99.6	30-150			
Benzo (b) fluoranthene	19.1	5.00	"	33.3	ND	57.3	30-150			
Benzo (k) fluoranthene	24.1	5.00	"	33.3	ND	72.2	30-150			
Benzo (g,h,i) perylene	19.9	5.00	"	33.3	ND	59.7	30-150			
Benzo (a) pyrene	25.9	5.00	"	33.3	ND	77.6	30-150			
Chrysene	23.0	5.00	"	33.3	ND	69.0	31.4-130			
Dibenz (a,h) anthracene	18.6	10.0	"	33.3	ND	55.8	30-145			
Fluoranthene	29.0	5.00	"	33.3	ND	87.0	30-150			
Fluorene	29.2	5.00	"	33.3	ND	87.6	47.9-126			
Indeno (1,2,3-cd) pyrene	26.1	10.0	"	33.3	ND	78.3	30-138			
Naphthalene	26.5	5.00	"	33.3	ND	79.6	39.9-129			
Phenanthrene	25.7	5.00	"	33.3	ND	77.0	30-150			
Pyrene	25.0	5.00	"	33.3	ND	74.9	30-150			
Surrogate: 2-Methylnaphthalene-d10	30.0		"	31.3		95.7	50-150			
Surrogate: Fluoranthene-d10	32.9		"	31.1		106	50-150			

Summit Scientific

The results in this report apply to the samples analyzed in accordance with the chain of custody document. This analytical report must be reproduced in its entirety.



LT Environmental, Inc.  
4600 West 60th Avenue  
Arvada CO, 80003

Project: PDC - Easton Property

Project Number: PDC  
Project Manager: Brian Dodek

**Reported:**  
07/10/12 09:17

**Semivolatile Organic Compounds by EPA Method 8270D SIM - Quality Control**  
**Summit Scientific**

Analyte	Reporting			Spike	Source		%REC		RPD	
	Result	Limit	Units	Level	Result	%REC	Limits	RPD	Limit	Notes

**Batch 2070210 - EPA 3550A**

Summit Scientific

*The results in this report apply to the samples analyzed in accordance with the chain of custody document. This analytical report must be reproduced in its entirety.*



LT Environmental, Inc.  
4600 West 60th Avenue  
Arvada CO, 80003

Project: PDC - Easton Property  
Project Number: PDC  
Project Manager: Brian Dodek

**Reported:**  
07/10/12 09:17

**Total Metals by EPA Method 6020 - Dry Weight Basis - Quality Control**  
**Summit Scientific**

Analyte	Reporting			Spike	Source		%REC		RPD	
	Result	Limit	Units	Level	Result	%REC	Limits	RPD	Limit	Notes

**Batch 2070301 - EPA 3050B**

**Blank (2070301-BLK1)**

Prepared & Analyzed: 07/03/12

Arsenic	ND	0.100	mg/kg
Arsenic	ND	0.100	"
Barium	ND	0.100	"
Cadmium	ND	0.100	"
Chromium	ND	0.100	"
Copper	ND	0.500	"
Lead	ND	0.100	"
Nickel	ND	0.100	"
Selenium	ND	0.100	"
Silver	ND	0.100	"
Zinc	ND	10.0	"

**LCS (2070301-BS1)**

Prepared & Analyzed: 07/03/12

Arsenic	2.51	0.100	mg/kg	2.54	98.6	80-119
Arsenic	2.51	0.100	"	2.54	98.6	80-119
Barium	226	0.100	"	225	100	80-119
Cadmium	1.06	0.100	"	1.02	105	80-124
Chromium	10.9	0.100	"	10.0	109	80-121
Copper	18.7	0.500	"	20.0	93.5	78.9-110
Lead	67.6	0.100	"	75.0	90.2	78.1-116
Nickel	14.8	0.100	"	15.1	98.3	80-118
Selenium	1.08	0.100	"	1.15	93.7	80-106
Silver	0.191	0.100	"	0.200	95.7	75.3-124
Zinc	68.7	10.0	"	75.0	91.6	83.5-117

**LCS Dup (2070301-BSD1)**

Prepared & Analyzed: 07/03/12

Arsenic	2.29	0.100	mg/kg	2.54	90.0	80-119	9.12	20
Arsenic	2.29	0.100	"	2.54	90.0	80-119	9.12	20
Barium	225	0.100	"	225	100	80-119	0.464	20
Cadmium	0.986	0.100	"	1.02	97.1	80-124	7.47	20
Chromium	10.0	0.100	"	10.0	99.6	80-121	8.76	20
Copper	17.0	0.500	"	20.0	85.0	78.9-110	9.52	20
Lead	69.3	0.100	"	75.0	92.3	78.1-116	2.34	17.2
Nickel	13.6	0.100	"	15.1	89.8	80-118	9.08	20
Selenium	1.10	0.100	"	1.15	95.3	80-106	1.69	20
Silver	0.199	0.100	"	0.200	99.5	75.3-124	3.84	23.2
Zinc	75.4	10.0	"	75.0	101	83.5-117	9.30	20

Summit Scientific

*The results in this report apply to the samples analyzed in accordance with the chain of custody document. This analytical report must be reproduced in its entirety.*



LT Environmental, Inc.  
4600 West 60th Avenue  
Arvada CO, 80003

Project: PDC - Easton Property  
Project Number: PDC  
Project Manager: Brian Dodek

**Reported:**  
07/10/12 09:17

**Total Metals by EPA Method 6020 - Dry Weight Basis - Quality Control**  
**Summit Scientific**

Analyte	Reporting			Spike	Source		%REC		RPD	
	Result	Limit	Units	Level	Result	%REC	Limits	RPD	Limit	Notes

**Batch 2070301 - EPA 3050B**

**Matrix Spike (2070301-MS1)**

**Source: R207019-01**

Prepared & Analyzed: 07/03/12

Arsenic	4.00	0.100	mg/kg	2.32	1.51	107	75-125		
Arsenic	4.00	0.100	"	2.32	1.51	107	75-125		
Barium	268	0.100	"	206	65.8	98.2	75-125		
Cadmium	1.18	0.100	"	0.928	0.143	112	75-125		
Chromium	15.9	0.100	"	9.18	6.78	98.9	45.6-137		
Copper	21.6	0.500	"	18.3	5.15	89.8	50.4-123		
Lead	67.0	0.100	"	68.5	6.06	88.9	46.2-136		
Nickel	18.8	0.100	"	13.8	5.69	94.8	75-157		
Selenium	0.912	0.100	"	1.05	0.0713	80.0	46.5-124		
Silver	0.175	0.100	"	0.183	0.0236	82.8	42.7-144		
Zinc	82.1	10.0	"	68.5	21.7	88.1	26.3-153		

**Matrix Spike Dup (2070301-MSD1)**

**Source: R207019-01**

Prepared & Analyzed: 07/03/12

Arsenic	3.51	0.100	mg/kg	2.36	1.51	84.6	75-125	13.2	24.2
Arsenic	3.51	0.100	"	2.36	1.51	84.6	75-125	13.2	24.2
Barium	275	0.100	"	209	65.8	100	75-125	2.76	25
Cadmium	1.17	0.100	"	0.942	0.143	109	75-125	0.391	22.3
Chromium	15.9	0.100	"	9.33	6.78	98.2	45.6-137	0.489	25
Copper	21.8	0.500	"	18.6	5.15	89.3	50.4-123	0.704	25
Lead	69.7	0.100	"	69.6	6.06	91.5	46.2-136	4.02	25
Nickel	18.9	0.100	"	14.0	5.69	94.6	75-157	0.860	25
Selenium	0.939	0.100	"	1.07	0.0713	81.3	46.5-124	2.92	25
Silver	0.189	0.100	"	0.186	0.0236	89.1	42.7-144	7.73	25
Zinc	83.2	10.0	"	69.6	21.7	88.4	26.3-153	1.38	25

Summit Scientific

*The results in this report apply to the samples analyzed in accordance with the chain of custody document. This analytical report must be reproduced in its entirety.*



LT Environmental, Inc.  
4600 West 60th Avenue  
Arvada CO, 80003

Project: PDC - Easton Property  
Project Number: PDC  
Project Manager: Brian Dodek

**Reported:**  
07/10/12 09:17

**Total Mercury by EPA Method 7471/7470 - Quality Control**  
**Summit Scientific**

Analyte	Reporting			Spike	Source	%REC		RPD		
	Result	Limit	Units	Level	Result	%REC	Limits	RPD	Limit	Notes

**Batch 2070303 - EPA 7471A**

**Blank (2070303-BLK1)**

Prepared & Analyzed: 07/03/12

Mercury ND 0.0500 mg/kg

**LCS (2070303-BS1)**

Prepared & Analyzed: 07/03/12

Mercury 0.388 0.0500 mg/kg 0.400 97.1 85.5-116

**LCS Dup (2070303-BSD1)**

Prepared & Analyzed: 07/03/12

Mercury 0.390 0.0500 mg/kg 0.400 97.5 85.5-116 0.432 17

**Matrix Spike (2070303-MS1)**

**Source: R207019-02**

Prepared & Analyzed: 07/03/12

Mercury 0.382 0.0500 mg/kg 0.373 0.0138 98.8 75-125

**Matrix Spike Dup (2070303-MSD1)**

**Source: R207019-02**

Prepared & Analyzed: 07/03/12

Mercury 0.396 0.0500 mg/kg 0.390 0.0138 98.1 75-125 3.60 25

Summit Scientific

*The results in this report apply to the samples analyzed in accordance with the chain of custody document. This analytical report must be reproduced in its entirety.*



LT Environmental, Inc.  
4600 West 60th Avenue  
Arvada CO, 80003

Project: PDC - Easton Property

Project Number: PDC  
Project Manager: Brian Dodek

**Reported:**  
07/10/12 09:17

**Physical Parameters by APHA/ASTM/EPA Methods - Quality Control**  
**Summit Scientific**

Analyte	Reporting			Spike	Source		%REC		RPD	
	Result	Limit	Units	Level	Result	%REC	Limits	RPD	Limit	Notes

**Batch 2070311 - General Preparation**

**Duplicate (2070311-DUP1)**

**Source: R207019-02**

Prepared & Analyzed: 07/03/12

pH	8.3		pH Units		8.3			0.241	4.95	
----	-----	--	----------	--	-----	--	--	-------	------	--

**Batch 2070312 - General Preparation**

**Duplicate (2070312-DUP1)**

**Source: R207019-03**

Prepared & Analyzed: 07/03/12

Specific Conductance (EC)	0.178	0.00100	mmhos/cm		0.176			1.50	15.5	
---------------------------	-------	---------	----------	--	-------	--	--	------	------	--

Summit Scientific

*The results in this report apply to the samples analyzed in accordance with the chain of custody document. This analytical report must be reproduced in its entirety.*



LT Environmental, Inc.  
4600 West 60th Avenue  
Arvada CO, 80003

Project: PDC - Easton Property  
Project Number: PDC  
Project Manager: Brian Dodek

**Reported:**  
07/10/12 09:17

**Soluble Nutrients by EPA 6020/Mod. USDA60 6(2, 3A) - Dry Weight Basis - Quality Control**  
**Summit Scientific**

Analyte	Reporting			Spike	Source		%REC		RPD	
	Result	Limit	Units	Level	Result	%REC	Limits	RPD	Limit	Notes

**Batch 2070302 - General Preparation**

**Blank (2070302-BLK1)**

Prepared & Analyzed: 07/03/12

Calcium	ND	2.50	mg/kg
Magnesium	ND	1.00	"
Sodium	6.95	5.00	"

**LCS (2070302-BS1)**

Prepared & Analyzed: 07/03/12

Calcium	360	2.50	mg/kg	400	90.1	70-130
Magnesium	198	1.00	"	200	99.1	70-130
Sodium	807	5.00	"	800	101	70-130

**LCS Dup (2070302-BSD1)**

Prepared & Analyzed: 07/03/12

Calcium	353	2.50	mg/kg	400	88.3	70-130	1.98	25
Magnesium	198	1.00	"	200	98.9	70-130	0.230	25
Sodium	799	5.00	"	800	99.9	70-130	0.953	25

**Matrix Spike (2070302-MS1)**

Source: R207019-02

Prepared & Analyzed: 07/03/12

Calcium	522	2.50	mg/kg	415	204	76.7	70-130
Magnesium	238	1.00	"	208	23.9	103	70-130
Sodium	871	5.00	"	831	11.1	104	70-130

**Matrix Spike Dup (2070302-MSD1)**

Source: R207019-02

Prepared & Analyzed: 07/03/12

Calcium	601	2.50	mg/kg	415	204	95.5	70-130	13.9	25
Magnesium	231	1.00	"	208	23.9	99.6	70-130	3.25	25
Sodium	838	5.00	"	831	11.1	99.5	70-130	3.91	25

Summit Scientific

*The results in this report apply to the samples analyzed in accordance with the chain of custody document. This analytical report must be reproduced in its entirety.*



LT Environmental, Inc.  
4600 West 60th Avenue  
Arvada CO, 80003

Project: PDC - Easton Property  
Project Number: PDC  
Project Manager: Brian Dodek

**Reported:**  
07/10/12 09:17

### Notes and Definitions

DET Analyte DETECTED  
ND Analyte NOT DETECTED at or above the reporting limit  
NR Not Reported  
dry Sample results reported on a dry weight basis  
RPD Relative Percent Difference

---

Summit Scientific

*The results in this report apply to the samples analyzed in accordance with the chain of custody document. This analytical report must be reproduced in its entirety.*

A handwritten signature in black ink, appearing to be 'MSM'.



**ATTACHMENT 5**  
**POST-INCORPORATION LABORATORY ANALYTICAL REPORT**



# Summit Scientific

---

741 Corporate Circle – Suite I ♦ Golden, Colorado 80401

303.277.9310 - laboratory ♦ 303.277.9531 - fax

September 04, 2015

Brett Forkner  
LT Environmental, Inc.  
4600 West 60th Avenue  
Arvada, CO 80003  
RE: PDC - Easton #2 Spread

Enclosed are the results of analyses for samples received by Summit Scientific on 08/28/15 16:30. If you have any questions concerning this report, please feel free to contact me.

Sincerely,

A handwritten signature in dark ink, appearing to read "M. Clements", with a stylized flourish at the end.

Michelle Clements For Paul Shrewsbury  
President



LT Environmental, Inc.  
4600 West 60th Avenue  
Arvada CO, 80003

Project: PDC - Easton #2 Spread

Project Number: 0188-11023  
Project Manager: Brett Forkner

**Reported:**  
09/04/15 14:33

### ANALYTICAL REPORT FOR SAMPLES

Sample ID	Laboratory ID	Matrix	Date Sampled	Date Received
SS01	1508232-01	Soil	08/28/15 10:15	08/28/15 16:30
SS02	1508232-02	Soil	08/28/15 09:55	08/28/15 16:30
SS03	1508232-03	Soil	08/28/15 10:30	08/28/15 16:30
SS04	1508232-04	Soil	08/28/15 10:45	08/28/15 16:30
SS05	1508232-05	Soil	08/28/15 11:35	08/28/15 16:30
SS06	1508232-06	Soil	08/28/15 11:55	08/28/15 16:30
SS07	1508232-07	Soil	08/28/15 12:10	08/28/15 16:30
SS08	1508232-08	Soil	08/28/15 11:45	08/28/15 16:30

Summit Scientific

*The results in this report apply to the samples analyzed in accordance with the chain of custody document. This analytical report must be reproduced in its entirety.*



LT Environmental, Inc.  
4600 West 60th Avenue  
Arvada CO, 80003

Project: PDC - Easton #2 Spread

Project Number: 0188-11023  
Project Manager: Brett Forkner

Reported:  
09/04/15 14:33

# Summit Scientific

1508232

S<sub>2</sub>

741 Corporate Circle Suite 1 ♦ Golden, Colorado 80401  
303-277-9310 ♦ 303-277-9531 Fax

Page 1 of 1

Client: LT Environmental, Inc.

Address: 4600 West 60th Avenue

City/State/Zip: Arvada, CO 80003

Phone: (303) 433-9788

Fax: (303) 433-1432

Project Manager: BRETT FORKNER

E-Mail: bforkner@LTENV.CO

Project Name: EASTON #2 SPREADFIELD

Sampler Name: BEN FALKNER

Project Number: 018811023

Sample Description	Date Sampled	Time Sampled	Number of Containers	Preservative				Matrix			Analyze For:							Special Instructions	
				HCl	HNO <sub>3</sub>	None	Other (Specify)	Groundwater	Soil	Air - Canister Serial #	Other (Specify)	DLO	LBTEX	PH/EC	SAIL	TABLE 910 METALS	ANALYST		TABLE 910 FAH3
SS01	8/28/15	1015	2			X													
SS02		0955	4			X								X	X	X	X	X	
SS03		1030	4			X								X	X	X	X	X	
SS04		1045	2			X											X		
SS05		1135	2			X											X		
SS06		1155	4			X								X	X	X	X	X	
SS07		1210	4			X								X	X	X	X	X	
SS08		1145	2			X											X		

Relinquished by: <i>BF</i>	Date/Time: 8/28/15	Received by: <i>BF</i>	Date/Time: 8/28/15 1630	Turn Around Time (Check)	Notes:
Relinquished by: <i>BF</i>	Date/Time: 8/28/15 1817	Received by: <i>BF</i>	Date/Time: 8/28/15 1811	Same Day <input type="checkbox"/> 72 Hours <input checked="" type="checkbox"/> 24 Hours <input type="checkbox"/> Standard <input type="checkbox"/> 48 Hours <input type="checkbox"/>	Full 910-1 For - SS02, SS03, SS06 + SS07 As only for SS 01, SS04 SS05, SS08
Relinquished by:	Date/Time:	Received in Lab by:	Date/Time:	Sample Integrity: 5.2°C Temperature Upon Receipt: <input checked="" type="checkbox"/> Intact: Yes No	

www.s2scientific.com

Summit Scientific

*M Clements*

The results in this report apply to the samples analyzed in accordance with the chain of custody document. This analytical report must be reproduced in its entirety.



LT Environmental, Inc.  
4600 West 60th Avenue  
Arvada CO, 80003

Project: PDC - Easton #2 Spread

Project Number: 0188-11023  
Project Manager: Brett Forkner

**Reported:**  
09/04/15 14:33

**SS01**  
**1508232-01 (Soil)**

**Summit Scientific**

**Total Metals by EPA Method 6020 - Dry Weight Basis**

Date Sampled: **08/28/15 10:15**

Analyte	Result	Reporting Limit	Units	Dilution	Batch	Prepared	Analyzed	Method	Notes
Arsenic	<b>6.88</b>	0.0967	mg/kg dry	1	1509002	09/01/15	09/02/15	EPA 6020A	

**Physical Parameters by APHA/ASTM/EPA Methods**

Date Sampled: **08/28/15 10:15**

Analyte	Result	Reporting Limit	Units	Dilution	Batch	Prepared	Analyzed	Method	Notes
% Solids	<b>92.8</b>		%	1	1508244	08/31/15	09/01/15	% calculation	

Summit Scientific

*The results in this report apply to the samples analyzed in accordance with the chain of custody document. This analytical report must be reproduced in its entirety.*



LT Environmental, Inc.  
4600 West 60th Avenue  
Arvada CO, 80003

Project: PDC - Easton #2 Spread  
Project Number: 0188-11023  
Project Manager: Brett Forkner

Reported:  
09/04/15 14:33

**SS02**  
**1508232-02 (Soil)**

**Summit Scientific**

**Extractable Petroleum Hydrocarbons by 8015**

Date Sampled: **08/28/15 09:55**

Analyte	Result	Reporting Limit	Units	Dilution	Batch	Prepared	Analyzed	Method	Notes
C10-C28 (DRO)	73	50	mg/kg	1	1508251	08/31/15	09/02/15	8015M	

Date Sampled: **08/28/15 09:55**

Analyte	Result	Reporting Limit	Units	Dilution	Batch	Prepared	Analyzed	Method	Notes
Surrogate: o-Terphenyl		98.5 %	30-150		"	"	"	"	

**Volatile Organic Compounds by EPA Method 8260B**

Date Sampled: **08/28/15 09:55**

Analyte	Result	Reporting Limit	Units	Dilution	Batch	Prepared	Analyzed	Method	Notes
Benzene	ND	0.0020	mg/kg	1	1508250	08/31/15	09/01/15	EPA 8260B	
Toluene	ND	0.0050	"	"	"	"	"	"	
Ethylbenzene	ND	0.0050	"	"	"	"	"	"	
Xylenes (total)	ND	0.0050	"	"	"	"	"	"	
Gasoline Range Hydrocarbons	ND	0.50	"	"	"	"	"	"	

Date Sampled: **08/28/15 09:55**

Analyte	Result	Reporting Limit	Units	Dilution	Batch	Prepared	Analyzed	Method	Notes
Surrogate: 1,2-Dichloroethane-d4		120 %	23-173		"	"	"	"	
Surrogate: Toluene-d8		96.8 %	20-170		"	"	"	"	
Surrogate: 4-Bromofluorobenzene		101 %	21-167		"	"	"	"	

**Semivolatile Organic Compounds by EPA Method 8270D SIM**

Date Sampled: **08/28/15 09:55**

Analyte	Result	Reporting Limit	Units	Dilution	Batch	Prepared	Analyzed	Method	Notes
Acenaphthene	ND	0.00500	mg/kg	1	1509014	09/02/15	09/03/15	EPA 8270D SIM	
Anthracene	ND	0.00500	"	"	"	"	"	"	

Summit Scientific

The results in this report apply to the samples analyzed in accordance with the chain of custody document. This analytical report must be reproduced in its entirety.



LT Environmental, Inc.  
4600 West 60th Avenue  
Arvada CO, 80003

Project: PDC - Easton #2 Spread

Project Number: 0188-11023  
Project Manager: Brett Forkner

Reported:  
09/04/15 14:33

**SS02**  
**1508232-02 (Soil)**

**Summit Scientific**

**Semivolatile Organic Compounds by EPA Method 8270D SIM**

Analyte	Result	Limit	Units	Dilution	Batch	Prepared	Analyzed	Method
Benzo (a) anthracene	0.0220	0.00500	mg/kg	1	1509014	09/02/15	09/03/15	EPA 8270D SIM
Benzo (b) fluoranthene	0.0110	0.00500	"	"	"	"	"	"
Benzo (k) fluoranthene	ND	0.00500	"	"	"	"	"	"
Benzo (a) pyrene	0.00523	0.00500	"	"	"	"	"	"
Chrysene	0.0136	0.00500	"	"	"	"	"	"
Dibenz (a,h) anthracene	ND	0.00500	"	"	"	"	"	"
Fluoranthene	0.00608	0.00500	"	"	"	"	"	"
Fluorene	ND	0.00500	"	"	"	"	"	"
Indeno (1,2,3-cd) pyrene	ND	0.00500	"	"	"	"	"	"
Naphthalene	0.00984	0.00500	"	"	"	"	"	"
Pyrene	0.00994	0.00500	"	"	"	"	"	"

Date Sampled: 08/28/15 09:55

Analyte	Result	Limit	Units	Dilution	Batch	Prepared	Analyzed	Method	Notes
Surrogate: 2-Methylnaphthalene-d10		77.3 %	50-150		"	"	"	"	
Surrogate: Fluoranthene-d10		78.9 %	50-150		"	"	"	"	

**Total Metals by EPA Method 6020 - Dry Weight Basis**

Date Sampled: 08/28/15 09:55

Analyte	Result	Limit	Units	Dilution	Batch	Prepared	Analyzed	Method	Notes
Arsenic	8.43	0.102	mg/kg dry	1	1509002	09/01/15	09/03/15	EPA 6020A	
Barium	648	0.102	"	"	"	"	"	"	
Boron	1.71	1.02	"	"	"	"	"	"	
Cadmium	1.11	0.102	"	"	"	"	"	"	
Chromium	14.0	0.510	"	"	"	"	"	"	
Copper	23.6	0.510	"	"	"	"	"	"	
Lead	10.6	0.102	"	"	"	"	"	"	
Nickel	20.8	0.102	"	"	"	"	"	"	
Selenium	2.66	0.0510	"	"	"	"	"	"	
Silver	0.163	0.102	"	"	"	"	"	"	
Zinc	72.3	10.2	"	"	"	"	"	"	

Summit Scientific

The results in this report apply to the samples analyzed in accordance with the chain of custody document. This analytical report must be reproduced in its entirety.



LT Environmental, Inc.  
4600 West 60th Avenue  
Arvada CO, 80003

Project: PDC - Easton #2 Spread

Project Number: 0188-11023  
Project Manager: Brett Forkner

Reported:  
09/04/15 14:33

**SS02**  
**1508232-02 (Soil)**

**Summit Scientific**

**Total Mercury by EPA Method 7471**

Date Sampled: **08/28/15 09:55**

Analyte	Result	Reporting Limit	Units	Dilution	Batch	Prepared	Analyzed	Method	Notes
Mercury	ND	0.0573	mg/kg dry	1	1509018	09/02/15	09/03/15	EPA 7471	

**Hexavalent Chromium by EPA 7196**

Date Sampled: **08/28/15 09:55**

Analyte	Result	Reporting Limit	Units	Dilution	Batch	Prepared	Analyzed	Method	Notes
Chromium, Hexavalent	ND	1.15	mg/kg dry	1	1508243	08/31/15	09/01/15	EPA 7196	

Date Sampled: **08/28/15 09:55**

Analyte	Result	Reporting Limit	Units	Dilution	Batch	Prepared	Analyzed	Method	Notes
Trivalent Chromium	<b>14.0</b>	1.66	"	"	[CALC]	09/01/15	09/03/15	EPA 7196/3060A	

**Soluble Nutrients by EPA 6020/Mod. USDA60 6(2, 3A) - Dry Weight Basis**

Date Sampled: **08/28/15 09:55**

Analyte	Result	Reporting Limit	Units	Dilution	Batch	Prepared	Analyzed	Method	Notes
Calcium	<b>861</b>	11.5	mg/kg dry	1	1509007	09/01/15	09/03/15	EPA 6020/Mod. USDA60 6(2, 3A)	
Magnesium	<b>57.3</b>	5.73	"	"	"	"	"	"	
Sodium	<b>2100</b>	5.73	"	"	"	"	"	"	

Date Sampled: **08/28/15 09:55**

Analyte	Result	Reporting Limit	Units	Dilution	Batch	Prepared	Analyzed	Method	Notes
Sodium Adsorption Ratio	<b>18.7</b>		units	"	1509032	09/03/15	09/03/15	"	

**Physical Parameters by APHA/ASTM/EPA Methods**

Summit Scientific

The results in this report apply to the samples analyzed in accordance with the chain of custody document. This analytical report must be reproduced in its entirety.





LT Environmental, Inc.  
4600 West 60th Avenue  
Arvada CO, 80003

Project: PDC - Easton #2 Spread

Project Number: 0188-11023  
Project Manager: Brett Forkner

**Reported:**  
09/04/15 14:33

**SS02**  
**1508232-02 (Soil)**

**Summit Scientific**

**Physical Parameters by APHA/ASTM/EPA Methods**

Date Sampled: **08/28/15 09:55**

Analyte	Result	Reporting Limit	Units	Dilution	Batch	Prepared	Analyzed	Method	Notes
<b>Specific Conductance (EC)</b>	<b>7.96</b>	0.0100	mmhos/cm	1	1509029	09/03/15	09/03/15	SM 2510B	

Date Sampled: **08/28/15 09:55**

Analyte	Result	Reporting Limit	Units	Dilution	Batch	Prepared	Analyzed	Method	Notes
<b>pH</b>	<b>8.08</b>	0.100	pH Units	"	1509028	09/03/15	09/03/15	EPA 9045	

Date Sampled: **08/28/15 09:55**

Analyte	Result	Reporting Limit	Units	Dilution	Batch	Prepared	Analyzed	Method	Notes
<b>% Solids</b>	<b>87.3</b>		%	"	1508244	08/31/15	09/01/15	% calculation	

Summit Scientific

*The results in this report apply to the samples analyzed in accordance with the chain of custody document. This analytical report must be reproduced in its entirety.*



LT Environmental, Inc.  
4600 West 60th Avenue  
Arvada CO, 80003

Project: PDC - Easton #2 Spread  
Project Number: 0188-11023  
Project Manager: Brett Forkner

Reported:  
09/04/15 14:33

**SS03**  
**1508232-03 (Soil)**

**Summit Scientific**

**Extractable Petroleum Hydrocarbons by 8015**

Date Sampled: **08/28/15 10:30**

Analyte	Result	Reporting Limit	Units	Dilution	Batch	Prepared	Analyzed	Method	Notes
C10-C28 (DRO)	120	50	mg/kg	1	1508251	08/31/15	09/02/15	8015M	

Date Sampled: **08/28/15 10:30**

Analyte	Result	Reporting Limit	Units	Dilution	Batch	Prepared	Analyzed	Method	Notes
Surrogate: o-Terphenyl		102 %	30-150		"	"	"	"	

**Volatile Organic Compounds by EPA Method 8260B**

Date Sampled: **08/28/15 10:30**

Analyte	Result	Reporting Limit	Units	Dilution	Batch	Prepared	Analyzed	Method	Notes
Benzene	ND	0.0020	mg/kg	1	1508250	08/31/15	09/01/15	EPA 8260B	
Toluene	ND	0.0050	"	"	"	"	"	"	
Ethylbenzene	ND	0.0050	"	"	"	"	"	"	
Xylenes (total)	ND	0.0050	"	"	"	"	"	"	
Gasoline Range Hydrocarbons	ND	0.50	"	"	"	"	"	"	

Date Sampled: **08/28/15 10:30**

Analyte	Result	Reporting Limit	Units	Dilution	Batch	Prepared	Analyzed	Method	Notes
Surrogate: 1,2-Dichloroethane-d4		115 %	23-173		"	"	"	"	
Surrogate: Toluene-d8		97.8 %	20-170		"	"	"	"	
Surrogate: 4-Bromofluorobenzene		101 %	21-167		"	"	"	"	

**Semivolatile Organic Compounds by EPA Method 8270D SIM**

Date Sampled: **08/28/15 10:30**

Analyte	Result	Reporting Limit	Units	Dilution	Batch	Prepared	Analyzed	Method	Notes
Acenaphthene	ND	0.00500	mg/kg	1	1509014	09/02/15	09/03/15	EPA 8270D SIM	
Anthracene	ND	0.00500	"	"	"	"	"	"	

Summit Scientific

The results in this report apply to the samples analyzed in accordance with the chain of custody document. This analytical report must be reproduced in its entirety.



LT Environmental, Inc.  
4600 West 60th Avenue  
Arvada CO, 80003

Project: PDC - Easton #2 Spread

Project Number: 0188-11023  
Project Manager: Brett Forkner

Reported:  
09/04/15 14:33

**SS03**  
**1508232-03 (Soil)**

**Summit Scientific**

**Semivolatile Organic Compounds by EPA Method 8270D SIM**

Analyte	Result	Limit	Units	Dilution	Batch	Prepared	Analyzed	Method	Notes
Benzo (a) anthracene	ND	0.00500	mg/kg	1	1509014	09/02/15	09/03/15	EPA 8270D SIM	
<b>Benzo (b) fluoranthene</b>	<b>0.0110</b>	0.00500	"	"	"	"	"	"	
Benzo (k) fluoranthene	ND	0.00500	"	"	"	"	"	"	
<b>Benzo (a) pyrene</b>	<b>0.00806</b>	0.00500	"	"	"	"	"	"	
<b>Chrysene</b>	<b>0.0753</b>	0.00500	"	"	"	"	"	"	
Dibenz (a,h) anthracene	ND	0.00500	"	"	"	"	"	"	
Fluoranthene	ND	0.00500	"	"	"	"	"	"	
<b>Fluorene</b>	<b>0.00526</b>	0.00500	"	"	"	"	"	"	
Indeno (1,2,3-cd) pyrene	ND	0.00500	"	"	"	"	"	"	
<b>Naphthalene</b>	<b>0.0211</b>	0.00500	"	"	"	"	"	"	
<b>Pyrene</b>	<b>0.0225</b>	0.00500	"	"	"	"	"	"	

Date Sampled: 08/28/15 10:30

Analyte	Result	Limit	Units	Dilution	Batch	Prepared	Analyzed	Method	Notes
Surrogate: 2-Methylnaphthalene-d10		76.3 %	50-150		"	"	"	"	
Surrogate: Fluoranthene-d10		57.2 %	50-150		"	"	"	"	

**Total Metals by EPA Method 6020 - Dry Weight Basis**

Date Sampled: 08/28/15 10:30

Analyte	Result	Limit	Units	Dilution	Batch	Prepared	Analyzed	Method	Notes
<b>Arsenic</b>	<b>8.15</b>	0.109	mg/kg dry	1	1509002	09/01/15	09/03/15	EPA 6020A	
<b>Barium</b>	<b>485</b>	0.109	"	"	"	"	"	"	
Boron	ND	1.09	"	"	"	"	"	"	
<b>Cadmium</b>	<b>1.46</b>	0.109	"	"	"	"	"	"	
<b>Chromium</b>	<b>12.2</b>	0.543	"	"	"	"	"	"	
<b>Copper</b>	<b>28.1</b>	0.543	"	"	"	"	"	"	
<b>Lead</b>	<b>10.9</b>	0.109	"	"	"	"	"	"	
<b>Nickel</b>	<b>23.1</b>	0.109	"	"	"	"	"	"	
<b>Selenium</b>	<b>3.14</b>	0.0543	"	"	"	"	"	"	
<b>Silver</b>	<b>0.166</b>	0.109	"	"	"	"	"	"	
<b>Zinc</b>	<b>105</b>	10.9	"	"	"	"	"	"	

Summit Scientific

The results in this report apply to the samples analyzed in accordance with the chain of custody document. This analytical report must be reproduced in its entirety.



LT Environmental, Inc.  
4600 West 60th Avenue  
Arvada CO, 80003

Project: PDC - Easton #2 Spread

Project Number: 0188-11023  
Project Manager: Brett Forkner

Reported:  
09/04/15 14:33

**SS03**  
**1508232-03 (Soil)**

**Summit Scientific**

**Total Mercury by EPA Method 7471**

Date Sampled: **08/28/15 10:30**

Analyte	Result	Reporting Limit	Units	Dilution	Batch	Prepared	Analyzed	Method	Notes
Mercury	ND	0.0466	mg/kg dry	1	1509018	09/02/15	09/03/15	EPA 7471	

**Hexavalent Chromium by EPA 7196**

Date Sampled: **08/28/15 10:30**

Analyte	Result	Reporting Limit	Units	Dilution	Batch	Prepared	Analyzed	Method	Notes
Chromium, Hexavalent	ND	1.06	mg/kg dry	1	1508243	08/31/15	09/01/15	EPA 7196	

Date Sampled: **08/28/15 10:30**

Analyte	Result	Reporting Limit	Units	Dilution	Batch	Prepared	Analyzed	Method	Notes
Trivalent Chromium	12.2	1.60	"	"	[CALC]	09/01/15	09/03/15	EPA 7196/3060A	

**Soluble Nutrients by EPA 6020/Mod. USDA60 6(2, 3A) - Dry Weight Basis**

Date Sampled: **08/28/15 10:30**

Analyte	Result	Reporting Limit	Units	Dilution	Batch	Prepared	Analyzed	Method	Notes
Calcium	689	12.0	mg/kg dry	1	1509007	09/01/15	09/03/15	EPA 6020/Mod. USDA60 6(2, 3A)	
Magnesium	45.3	6.02	"	"	"	"	"	"	
Sodium	2540	6.02	"	"	"	"	"	"	

Date Sampled: **08/28/15 10:30**

Analyte	Result	Reporting Limit	Units	Dilution	Batch	Prepared	Analyzed	Method	Notes
Sodium Adsorption Ratio	25.3		units	"	1509032	09/03/15	09/03/15	"	

**Physical Parameters by APHA/ASTM/EPA Methods**

Summit Scientific

The results in this report apply to the samples analyzed in accordance with the chain of custody document. This analytical report must be reproduced in its entirety.



LT Environmental, Inc.  
4600 West 60th Avenue  
Arvada CO, 80003

Project: PDC - Easton #2 Spread

Project Number: 0188-11023  
Project Manager: Brett Forkner

**Reported:**  
09/04/15 14:33

**SS03**  
**1508232-03 (Soil)**

**Summit Scientific**

**Physical Parameters by APHA/ASTM/EPA Methods**

Date Sampled: **08/28/15 10:30**

Analyte	Result	Reporting Limit	Units	Dilution	Batch	Prepared	Analyzed	Method	Notes
Specific Conductance (EC)	<b>7.14</b>	0.0100	mmhos/cm	1	1509029	09/03/15	09/03/15	SM 2510B	

Date Sampled: **08/28/15 10:30**

Analyte	Result	Reporting Limit	Units	Dilution	Batch	Prepared	Analyzed	Method	Notes
pH	<b>8.18</b>	0.100	pH Units	"	1509028	09/03/15	09/03/15	EPA 9045	

Date Sampled: **08/28/15 10:30**

Analyte	Result	Reporting Limit	Units	Dilution	Batch	Prepared	Analyzed	Method	Notes
% Solids	<b>83.1</b>		%	"	1508244	08/31/15	09/01/15	% calculation	

Summit Scientific

*The results in this report apply to the samples analyzed in accordance with the chain of custody document. This analytical report must be reproduced in its entirety.*



LT Environmental, Inc.  
4600 West 60th Avenue  
Arvada CO, 80003

Project: PDC - Easton #2 Spread

Project Number: 0188-11023  
Project Manager: Brett Forkner

**Reported:**  
09/04/15 14:33

**SS04**  
**1508232-04 (Soil)**

**Summit Scientific**

**Total Metals by EPA Method 6020 - Dry Weight Basis**

Date Sampled: **08/28/15 10:45**

Analyte	Result	Reporting Limit	Units	Dilution	Batch	Prepared	Analyzed	Method	Notes
Arsenic	<b>8.81</b>	0.102	mg/kg dry	1	1509002	09/01/15	09/03/15	EPA 6020A	

**Physical Parameters by APHA/ASTM/EPA Methods**

Date Sampled: **08/28/15 10:45**

Analyte	Result	Reporting Limit	Units	Dilution	Batch	Prepared	Analyzed	Method	Notes
% Solids	<b>89.1</b>		%	1	1508244	08/31/15	09/01/15	% calculation	

Summit Scientific

*The results in this report apply to the samples analyzed in accordance with the chain of custody document. This analytical report must be reproduced in its entirety.*



LT Environmental, Inc.  
4600 West 60th Avenue  
Arvada CO, 80003

Project: PDC - Easton #2 Spread

Project Number: 0188-11023  
Project Manager: Brett Forkner

**Reported:**  
09/04/15 14:33

**SS05**  
**1508232-05 (Soil)**

**Summit Scientific**

**Total Metals by EPA Method 6020 - Dry Weight Basis**

Date Sampled: **08/28/15 11:35**

Analyte	Result	Reporting Limit	Units	Dilution	Batch	Prepared	Analyzed	Method	Notes
Arsenic	<b>7.18</b>	0.119	mg/kg dry	1	1509002	09/01/15	09/03/15	EPA 6020A	

**Physical Parameters by APHA/ASTM/EPA Methods**

Date Sampled: **08/28/15 11:35**

Analyte	Result	Reporting Limit	Units	Dilution	Batch	Prepared	Analyzed	Method	Notes
% Solids	<b>83.8</b>		%	1	1508244	08/31/15	09/01/15	% calculation	

Summit Scientific

*The results in this report apply to the samples analyzed in accordance with the chain of custody document. This analytical report must be reproduced in its entirety.*



LT Environmental, Inc.  
4600 West 60th Avenue  
Arvada CO, 80003

Project: PDC - Easton #2 Spread  
Project Number: 0188-11023  
Project Manager: Brett Forkner

Reported:  
09/04/15 14:33

**SS06**  
**1508232-06 (Soil)**

**Summit Scientific**

**Extractable Petroleum Hydrocarbons by 8015**

Date Sampled: **08/28/15 11:55**

Analyte	Result	Reporting Limit	Units	Dilution	Batch	Prepared	Analyzed	Method	Notes
C10-C28 (DRO)	73	50	mg/kg	1	1508251	08/31/15	09/02/15	8015M	

Date Sampled: **08/28/15 11:55**

Analyte	Result	Reporting Limit	Units	Dilution	Batch	Prepared	Analyzed	Method	Notes
Surrogate: o-Terphenyl		97.6 %	30-150		"	"	"	"	

**Volatile Organic Compounds by EPA Method 8260B**

Date Sampled: **08/28/15 11:55**

Analyte	Result	Reporting Limit	Units	Dilution	Batch	Prepared	Analyzed	Method	Notes
Benzene	ND	0.0020	mg/kg	1	1508250	08/31/15	09/01/15	EPA 8260B	
Toluene	ND	0.0050	"	"	"	"	"	"	
Ethylbenzene	ND	0.0050	"	"	"	"	"	"	
Xylenes (total)	ND	0.0050	"	"	"	"	"	"	
Gasoline Range Hydrocarbons	ND	0.50	"	"	"	"	"	"	

Date Sampled: **08/28/15 11:55**

Analyte	Result	Reporting Limit	Units	Dilution	Batch	Prepared	Analyzed	Method	Notes
Surrogate: 1,2-Dichloroethane-d4		116 %	23-173		"	"	"	"	
Surrogate: Toluene-d8		97.3 %	20-170		"	"	"	"	
Surrogate: 4-Bromofluorobenzene		104 %	21-167		"	"	"	"	

**Semivolatile Organic Compounds by EPA Method 8270D SIM**

Date Sampled: **08/28/15 11:55**

Analyte	Result	Reporting Limit	Units	Dilution	Batch	Prepared	Analyzed	Method	Notes
Acenaphthene	ND	0.00500	mg/kg	1	1509014	09/02/15	09/03/15	EPA 8270D SIM	
Anthracene	ND	0.00500	"	"	"	"	"	"	

Summit Scientific

The results in this report apply to the samples analyzed in accordance with the chain of custody document. This analytical report must be reproduced in its entirety.





LT Environmental, Inc.  
4600 West 60th Avenue  
Arvada CO, 80003

Project: PDC - Easton #2 Spread

Project Number: 0188-11023  
Project Manager: Brett Forkner

Reported:  
09/04/15 14:33

**SS06**  
**1508232-06 (Soil)**

**Summit Scientific**

**Semivolatile Organic Compounds by EPA Method 8270D SIM**

Analyte	Result	Limit	Units	Dilution	Batch	Prepared	Analyzed	Method	Notes
Benzo (a) anthracene	ND	0.00500	mg/kg	1	1509014	09/02/15	09/03/15	EPA 8270D SIM	
<b>Benzo (b) fluoranthene</b>	<b>0.0146</b>	0.00500	"	"	"	"	"	"	
Benzo (k) fluoranthene	ND	0.00500	"	"	"	"	"	"	
<b>Benzo (a) pyrene</b>	<b>0.00673</b>	0.00500	"	"	"	"	"	"	
<b>Chrysene</b>	<b>0.0164</b>	0.00500	"	"	"	"	"	"	
Dibenz (a,h) anthracene	ND	0.00500	"	"	"	"	"	"	
<b>Fluoranthene</b>	<b>0.00674</b>	0.00500	"	"	"	"	"	"	
Fluorene	ND	0.00500	"	"	"	"	"	"	
Indeno (1,2,3-cd) pyrene	ND	0.00500	"	"	"	"	"	"	
<b>Naphthalene</b>	<b>0.0147</b>	0.00500	"	"	"	"	"	"	
<b>Pyrene</b>	<b>0.0216</b>	0.00500	"	"	"	"	"	"	

Date Sampled: 08/28/15 11:55

Analyte	Result	Limit	Units	Dilution	Batch	Prepared	Analyzed	Method	Notes
Surrogate: 2-Methylnaphthalene-d10		58.2 %	50-150		"	"	"	"	
Surrogate: Fluoranthene-d10		53.6 %	50-150		"	"	"	"	

**Total Metals by EPA Method 6020 - Dry Weight Basis**

Date Sampled: 08/28/15 11:55

Analyte	Result	Limit	Units	Dilution	Batch	Prepared	Analyzed	Method	Notes
<b>Arsenic</b>	<b>7.68</b>	0.0954	mg/kg dry	1	1509002	09/01/15	09/03/15	EPA 6020A	
<b>Barium</b>	<b>313</b>	0.0954	"	"	"	"	"	"	
Boron	ND	0.954	"	"	"	"	"	"	
<b>Cadmium</b>	<b>0.958</b>	0.0954	"	"	"	"	"	"	
<b>Chromium</b>	<b>14.2</b>	0.477	"	"	"	"	"	"	
<b>Copper</b>	<b>25.7</b>	0.477	"	"	"	"	"	"	
<b>Lead</b>	<b>10.7</b>	0.0954	"	"	"	"	"	"	
<b>Nickel</b>	<b>20.9</b>	0.0954	"	"	"	"	"	"	
<b>Selenium</b>	<b>2.31</b>	0.0477	"	"	"	"	"	"	
<b>Silver</b>	<b>0.177</b>	0.0954	"	"	"	"	"	"	
<b>Zinc</b>	<b>68.8</b>	9.54	"	"	"	"	"	"	

Summit Scientific

The results in this report apply to the samples analyzed in accordance with the chain of custody document. This analytical report must be reproduced in its entirety.



LT Environmental, Inc.  
4600 West 60th Avenue  
Arvada CO, 80003

Project: PDC - Easton #2 Spread

Project Number: 0188-11023  
Project Manager: Brett Forkner

Reported:  
09/04/15 14:33

**SS06**  
**1508232-06 (Soil)**

**Summit Scientific**

**Total Mercury by EPA Method 7471**

Date Sampled: **08/28/15 11:55**

Analyte	Result	Reporting Limit	Units	Dilution	Batch	Prepared	Analyzed	Method	Notes
Mercury	<b>0.0421</b>	0.0403	mg/kg dry	1	1509018	09/02/15	09/03/15	EPA 7471	

**Hexavalent Chromium by EPA 7196**

Date Sampled: **08/28/15 11:55**

Analyte	Result	Reporting Limit	Units	Dilution	Batch	Prepared	Analyzed	Method	Notes
Chromium, Hexavalent	ND	0.915	mg/kg dry	1	1508243	08/31/15	09/01/15	EPA 7196	

Date Sampled: **08/28/15 11:55**

Analyte	Result	Reporting Limit	Units	Dilution	Batch	Prepared	Analyzed	Method	Notes
Trivalent Chromium	<b>14.2</b>	1.39	"	"	[CALC]	09/01/15	09/03/15	EPA 7196/3060A	

**Soluble Nutrients by EPA 6020/Mod. USDA60 6(2, 3A) - Dry Weight Basis**

Date Sampled: **08/28/15 11:55**

Analyte	Result	Reporting Limit	Units	Dilution	Batch	Prepared	Analyzed	Method	Notes
Calcium	<b>778</b>	8.64	mg/kg dry	1	1509007	09/01/15	09/03/15	EPA 6020/Mod. USDA60 6(2, 3A)	
Magnesium	<b>74.6</b>	4.32	"	"	"	"	"	"	
Sodium	<b>1120</b>	4.32	"	"	"	"	"	"	

Date Sampled: **08/28/15 11:55**

Analyte	Result	Reporting Limit	Units	Dilution	Batch	Prepared	Analyzed	Method	Notes
Sodium Adsorption Ratio	<b>10.3</b>		units	"	1509032	09/03/15	09/03/15	"	

**Physical Parameters by APHA/ASTM/EPA Methods**

Summit Scientific

The results in this report apply to the samples analyzed in accordance with the chain of custody document. This analytical report must be reproduced in its entirety.



LT Environmental, Inc.  
4600 West 60th Avenue  
Arvada CO, 80003

Project: PDC - Easton #2 Spread

Project Number: 0188-11023  
Project Manager: Brett Forkner

**Reported:**  
09/04/15 14:33

**SS06**  
**1508232-06 (Soil)**

**Summit Scientific**

**Physical Parameters by APHA/ASTM/EPA Methods**

Date Sampled: **08/28/15 11:55**

Analyte	Result	Reporting Limit	Units	Dilution	Batch	Prepared	Analyzed	Method	Notes
<b>Specific Conductance (EC)</b>	<b>4.32</b>	0.0100	mmhos/cm	1	1509029	09/03/15	09/03/15	SM 2510B	

Date Sampled: **08/28/15 11:55**

Analyte	Result	Reporting Limit	Units	Dilution	Batch	Prepared	Analyzed	Method	Notes
<b>pH</b>	<b>8.24</b>	0.100	pH Units	"	1509028	09/03/15	09/03/15	EPA 9045	

Date Sampled: **08/28/15 11:55**

Analyte	Result	Reporting Limit	Units	Dilution	Batch	Prepared	Analyzed	Method	Notes
<b>% Solids</b>	<b>94.9</b>		%	"	1508244	08/31/15	09/01/15	% calculation	

Summit Scientific

*The results in this report apply to the samples analyzed in accordance with the chain of custody document. This analytical report must be reproduced in its entirety.*



LT Environmental, Inc.  
4600 West 60th Avenue  
Arvada CO, 80003

Project: PDC - Easton #2 Spread  
Project Number: 0188-11023  
Project Manager: Brett Forkner

**Reported:**  
09/04/15 14:33

**SS07**  
**1508232-07 (Soil)**

**Summit Scientific**

**Extractable Petroleum Hydrocarbons by 8015**

Date Sampled: **08/28/15 12:10**

Analyte	Result	Reporting Limit	Units	Dilution	Batch	Prepared	Analyzed	Method	Notes
<b>C10-C28 (DRO)</b>	<b>220</b>	50	mg/kg	1	1508251	08/31/15	09/02/15	8015M	

Date Sampled: **08/28/15 12:10**

Analyte	Result	Reporting Limit	Units	Dilution	Batch	Prepared	Analyzed	Method	Notes
<i>Surrogate: o-Terphenyl</i>		109 %	30-150		"	"	"	"	

**Volatile Organic Compounds by EPA Method 8260B**

Date Sampled: **08/28/15 12:10**

Analyte	Result	Reporting Limit	Units	Dilution	Batch	Prepared	Analyzed	Method	Notes
Benzene	ND	0.0020	mg/kg	1	1508250	08/31/15	09/01/15	EPA 8260B	
Toluene	ND	0.0050	"	"	"	"	"	"	
Ethylbenzene	ND	0.0050	"	"	"	"	"	"	
Xylenes (total)	ND	0.0050	"	"	"	"	"	"	
Gasoline Range Hydrocarbons	ND	0.50	"	"	"	"	"	"	

Date Sampled: **08/28/15 12:10**

Analyte	Result	Reporting Limit	Units	Dilution	Batch	Prepared	Analyzed	Method	Notes
<i>Surrogate: 1,2-Dichloroethane-d4</i>		117 %	23-173		"	"	"	"	
<i>Surrogate: Toluene-d8</i>		97.8 %	20-170		"	"	"	"	
<i>Surrogate: 4-Bromofluorobenzene</i>		102 %	21-167		"	"	"	"	

**Semivolatile Organic Compounds by EPA Method 8270D SIM**

Date Sampled: **08/28/15 12:10**

Analyte	Result	Reporting Limit	Units	Dilution	Batch	Prepared	Analyzed	Method	Notes
Acenaphthene	ND	0.00500	mg/kg	1	1509014	09/02/15	09/03/15	EPA 8270D SIM	
Anthracene	ND	0.00500	"	"	"	"	"	"	

Summit Scientific

*The results in this report apply to the samples analyzed in accordance with the chain of custody document. This analytical report must be reproduced in its entirety.*



LT Environmental, Inc.  
4600 West 60th Avenue  
Arvada CO, 80003

Project: PDC - Easton #2 Spread

Project Number: 0188-11023  
Project Manager: Brett Forkner

Reported:  
09/04/15 14:33

**SS07**  
**1508232-07 (Soil)**

**Summit Scientific**

**Semivolatile Organic Compounds by EPA Method 8270D SIM**

Analyte	Result	Limit	Units	Dilution	Batch	Prepared	Analyzed	Method
Benzo (a) anthracene	0.0219	0.00500	mg/kg	1	1509014	09/02/15	09/03/15	EPA 8270D SIM
Benzo (b) fluoranthene	0.0473	0.00500	"	"	"	"	"	"
Benzo (k) fluoranthene	0.0141	0.00500	"	"	"	"	"	"
Benzo (a) pyrene	0.0279	0.00500	"	"	"	"	"	"
Chrysene	0.0862	0.00500	"	"	"	"	"	"
Dibenz (a,h) anthracene	ND	0.00500	"	"	"	"	"	"
Fluoranthene	0.0154	0.00500	"	"	"	"	"	"
Fluorene	0.00625	0.00500	"	"	"	"	"	"
Indeno (1,2,3-cd) pyrene	0.0224	0.00500	"	"	"	"	"	"
Naphthalene	0.0168	0.00500	"	"	"	"	"	"
Pyrene	0.0532	0.00500	"	"	"	"	"	"

Date Sampled: 08/28/15 12:10

Analyte	Result	Reporting Limit	Units	Dilution	Batch	Prepared	Analyzed	Method	Notes
Surrogate: 2-Methylnaphthalene-d10		71.3 %	50-150		"	"	"	"	
Surrogate: Fluoranthene-d10		57.0 %	50-150		"	"	"	"	

**Total Metals by EPA Method 6020 - Dry Weight Basis**

Date Sampled: 08/28/15 12:10

Analyte	Result	Reporting Limit	Units	Dilution	Batch	Prepared	Analyzed	Method	Notes
Arsenic	7.43	0.0929	mg/kg dry	1	1509002	09/01/15	09/03/15	EPA 6020A	
Barium	313	0.0929	"	"	"	"	"	"	
Boron	1.07	0.929	"	"	"	"	"	"	
Cadmium	1.39	0.0929	"	"	"	"	"	"	
Chromium	14.6	0.465	"	"	"	"	"	"	
Copper	27.1	0.465	"	"	"	"	"	"	
Lead	9.16	0.0929	"	"	"	"	"	"	
Nickel	22.4	0.0929	"	"	"	"	"	"	
Selenium	3.25	0.0465	"	"	"	"	"	"	
Silver	0.199	0.0929	"	"	"	"	"	"	
Zinc	69.8	9.29	"	"	"	"	"	"	

Summit Scientific

The results in this report apply to the samples analyzed in accordance with the chain of custody document. This analytical report must be reproduced in its entirety.



LT Environmental, Inc.  
4600 West 60th Avenue  
Arvada CO, 80003

Project: PDC - Easton #2 Spread

Project Number: 0188-11023  
Project Manager: Brett Forkner

Reported:  
09/04/15 14:33

**SS07**  
**1508232-07 (Soil)**

**Summit Scientific**

**Total Mercury by EPA Method 7471**

Date Sampled: **08/28/15 12:10**

Analyte	Result	Reporting Limit	Units	Dilution	Batch	Prepared	Analyzed	Method	Notes
Mercury	ND	0.0470	mg/kg dry	1	1509018	09/02/15	09/03/15	EPA 7471	

**Hexavalent Chromium by EPA 7196**

Date Sampled: **08/28/15 12:10**

Analyte	Result	Reporting Limit	Units	Dilution	Batch	Prepared	Analyzed	Method	Notes
Chromium, Hexavalent	ND	1.06	mg/kg dry	1	1508243	08/31/15	09/01/15	EPA 7196	

Date Sampled: **08/28/15 12:10**

Analyte	Result	Reporting Limit	Units	Dilution	Batch	Prepared	Analyzed	Method	Notes
Trivalent Chromium	14.6	1.52	"	"	[CALC]	09/01/15	09/03/15	EPA 7196/3060A	

**Soluble Nutrients by EPA 6020/Mod. USDA60 6(2, 3A) - Dry Weight Basis**

Date Sampled: **08/28/15 12:10**

Analyte	Result	Reporting Limit	Units	Dilution	Batch	Prepared	Analyzed	Method	Notes
Calcium	825	10.6	mg/kg dry	1	1509007	09/01/15	09/03/15	EPA 6020/Mod. USDA60 6(2, 3A)	
Magnesium	47.0	5.28	"	"	"	"	"	"	
Sodium	2310	5.28	"	"	"	"	"	"	

Date Sampled: **08/28/15 12:10**

Analyte	Result	Reporting Limit	Units	Dilution	Batch	Prepared	Analyzed	Method	Notes
Sodium Adsorption Ratio	21.2		units	"	1509032	09/03/15	09/03/15	"	

**Physical Parameters by APHA/ASTM/EPA Methods**

Summit Scientific

The results in this report apply to the samples analyzed in accordance with the chain of custody document. This analytical report must be reproduced in its entirety.



LT Environmental, Inc.  
4600 West 60th Avenue  
Arvada CO, 80003

Project: PDC - Easton #2 Spread

Project Number: 0188-11023  
Project Manager: Brett Forkner

**Reported:**  
09/04/15 14:33

**SS07**  
**1508232-07 (Soil)**

**Summit Scientific**

**Physical Parameters by APHA/ASTM/EPA Methods**

Date Sampled: **08/28/15 12:10**

Analyte	Result	Reporting Limit	Units	Dilution	Batch	Prepared	Analyzed	Method	Notes
Specific Conductance (EC)	<b>8.54</b>	0.0100	mmhos/cm	1	1509029	09/03/15	09/03/15	SM 2510B	

Date Sampled: **08/28/15 12:10**

Analyte	Result	Reporting Limit	Units	Dilution	Batch	Prepared	Analyzed	Method	Notes
pH	<b>8.10</b>	0.100	pH Units	"	1509028	09/03/15	09/03/15	EPA 9045	

Date Sampled: **08/28/15 12:10**

Analyte	Result	Reporting Limit	Units	Dilution	Batch	Prepared	Analyzed	Method	Notes
% Solids	<b>94.7</b>		%	"	1508244	08/31/15	09/01/15	% calculation	

Summit Scientific

*The results in this report apply to the samples analyzed in accordance with the chain of custody document. This analytical report must be reproduced in its entirety.*



LT Environmental, Inc.  
4600 West 60th Avenue  
Arvada CO, 80003

Project: PDC - Easton #2 Spread

Project Number: 0188-11023  
Project Manager: Brett Forkner

**Reported:**  
09/04/15 14:33

**SS08**  
**1508232-08 (Soil)**

**Summit Scientific**

**Total Metals by EPA Method 6020 - Dry Weight Basis**

Date Sampled: **08/28/15 11:45**

Analyte	Result	Reporting Limit	Units	Dilution	Batch	Prepared	Analyzed	Method	Notes
Arsenic	<b>6.61</b>	0.112	mg/kg dry	1	1509002	09/01/15	09/03/15	EPA 6020A	

**Physical Parameters by APHA/ASTM/EPA Methods**

Date Sampled: **08/28/15 11:45**

Analyte	Result	Reporting Limit	Units	Dilution	Batch	Prepared	Analyzed	Method	Notes
% Solids	<b>89.3</b>		%	1	1508244	08/31/15	09/01/15	% calculation	

Summit Scientific

*The results in this report apply to the samples analyzed in accordance with the chain of custody document. This analytical report must be reproduced in its entirety.*





LT Environmental, Inc.  
4600 West 60th Avenue  
Arvada CO, 80003

Project: PDC - Easton #2 Spread

Project Number: 0188-11023  
Project Manager: Brett Forkner

**Reported:**  
09/04/15 14:33

**Extractable Petroleum Hydrocarbons by 8015 - Quality Control**  
**Summit Scientific**

Analyte	Reporting			Spike	Source		%REC		RPD	
	Result	Limit	Units	Level	Result	%REC	Limits	RPD	Limit	Notes

**Batch 1508251 - EPA 3550A**

**Blank (1508251-BLK1)**

Prepared: 08/31/15 Analyzed: 09/02/15

C10-C28 (DRO) ND 50 mg/kg

Surrogate: o-Terphenyl 12.2 " 12.2 100 30-150

**LCS (1508251-BS1)**

Prepared: 08/31/15 Analyzed: 09/02/15

C10-C28 (DRO) 487 50 mg/kg 499 97.7 73-134

Surrogate: o-Terphenyl 13.0 " 12.2 106 30-150

**Matrix Spike (1508251-MS1)**

**Source: 1508228-01**

Prepared: 08/31/15 Analyzed: 09/02/15

C10-C28 (DRO) 488 50 mg/kg 493 9.60 97.0 50-148

Surrogate: o-Terphenyl 12.9 " 12.1 107 30-150

**Matrix Spike Dup (1508251-MSD1)**

**Source: 1508228-01**

Prepared: 08/31/15 Analyzed: 09/02/15

C10-C28 (DRO) 461 50 mg/kg 494 9.60 91.4 50-148 5.64 13

Surrogate: o-Terphenyl 12.2 " 12.1 101 30-150

Summit Scientific

The results in this report apply to the samples analyzed in accordance with the chain of custody document. This analytical report must be reproduced in its entirety.



LT Environmental, Inc.  
4600 West 60th Avenue  
Arvada CO, 80003

Project: PDC - Easton #2 Spread  
Project Number: 0188-11023  
Project Manager: Brett Forkner

Reported:  
09/04/15 14:33

**Volatile Organic Compounds by EPA Method 8260B - Quality Control**  
**Summit Scientific**

Analyte	Reporting			Spike	Source		%REC		RPD	
	Result	Limit	Units	Level	Result	%REC	Limits	RPD	Limit	Notes

**Batch 1508250 - EPA 5030 Soil MS**

**Blank (1508250-BLK1)**

Prepared: 08/31/15 Analyzed: 09/01/15

Benzene	ND	0.0020	mg/kg							
Toluene	ND	0.0050	"							
Ethylbenzene	ND	0.0050	"							
Xylenes (total)	ND	0.0050	"							
Gasoline Range Hydrocarbons	ND	0.50	"							
Surrogate: 1,2-Dichloroethane-d4	0.0426		"	0.0396		108	23-173			
Surrogate: Toluene-d8	0.0384		"	0.0400		96.0	20-170			
Surrogate: 4-Bromofluorobenzene	0.0385		"	0.0400		96.2	21-167			

**LCS (1508250-BS1)**

Prepared: 08/31/15 Analyzed: 09/01/15

Benzene	0.109	0.0020	mg/kg	0.100		109	58-130			
Toluene	0.103	0.0050	"	0.100		103	61-134			
Ethylbenzene	0.109	0.0050	"	0.0992		110	74-139			
m,p-Xylene	0.221	0.010	"	0.200		111	73-137			
o-Xylene	0.115	0.0050	"	0.0984		117	73-141			
Xylenes (total)	0.336	0.0050	"				30-150			
Gasoline Range Hydrocarbons	1.90	0.50	"				30-150			
Surrogate: 1,2-Dichloroethane-d4	0.0418		"	0.0396		106	23-173			
Surrogate: Toluene-d8	0.0394		"	0.0400		98.6	20-170			
Surrogate: 4-Bromofluorobenzene	0.0410		"	0.0400		102	21-167			

**Matrix Spike (1508250-MS1)**

Source: 1508228-01

Prepared: 08/31/15 Analyzed: 09/01/15

Benzene	0.0987	0.0020	mg/kg	0.0916	ND	108	30-131			
Toluene	0.0951	0.0050	"	0.0916	ND	104	30-134			
Ethylbenzene	0.101	0.0050	"	0.0908	ND	111	22-153			
m,p-Xylene	0.204	0.010	"	0.183	ND	112	10-159			
o-Xylene	0.107	0.0050	"	0.0901	ND	119	31-151			
Xylenes (total)	0.312	0.0050	"		ND		0-0			
Gasoline Range Hydrocarbons	1.87	0.50	"		ND		0-0			
Surrogate: 1,2-Dichloroethane-d4	0.0426		"	0.0363		118	23-173			
Surrogate: Toluene-d8	0.0369		"	0.0366		101	20-170			
Surrogate: 4-Bromofluorobenzene	0.0376		"	0.0366		103	21-167			

Summit Scientific

The results in this report apply to the samples analyzed in accordance with the chain of custody document. This analytical report must be reproduced in its entirety.



LT Environmental, Inc.  
4600 West 60th Avenue  
Arvada CO, 80003

Project: PDC - Easton #2 Spread

Project Number: 0188-11023  
Project Manager: Brett Forkner

Reported:  
09/04/15 14:33

**Volatile Organic Compounds by EPA Method 8260B - Quality Control**  
**Summit Scientific**

Analyte	Reporting			Spike	Source		%REC		RPD	
	Result	Limit	Units	Level	Result	%REC	Limits	RPD	Limit	Notes

**Batch 1508250 - EPA 5030 Soil MS**

Matrix Spike Dup (1508250-MSD1)		Source: 1508228-01			Prepared: 08/31/15		Analyzed: 09/01/15			
Benzene	0.103	0.0020	mg/kg	0.0943	ND	110	30-131	4.71	34	
Toluene	0.0957	0.0050	"	0.0943	ND	101	30-134	0.607	30	
Ethylbenzene	0.105	0.0050	"	0.0936	ND	112	22-153	3.27	24	
m,p-Xylene	0.212	0.010	"	0.188	ND	112	10-159	3.58	68	
o-Xylene	0.108	0.0050	"	0.0928	ND	117	31-151	0.981	38	
Xylenes (total)	0.320	0.0050	"		ND		0-0	2.69	0	
Gasoline Range Hydrocarbons	1.94	0.50	"		ND		0-0	3.39	0	
Surrogate: 1,2-Dichloroethane-d4	0.0447		"	0.0374		120	23-173			
Surrogate: Toluene-d8	0.0373		"	0.0377		98.9	20-170			
Surrogate: 4-Bromofluorobenzene	0.0380		"	0.0377		101	21-167			

Summit Scientific

The results in this report apply to the samples analyzed in accordance with the chain of custody document. This analytical report must be reproduced in its entirety.



LT Environmental, Inc.  
4600 West 60th Avenue  
Arvada CO, 80003

Project: PDC - Easton #2 Spread  
Project Number: 0188-11023  
Project Manager: Brett Forkner

Reported:  
09/04/15 14:33

**Semivolatile Organic Compounds by EPA Method 8270D SIM - Quality Control**  
**Summit Scientific**

Analyte	Reporting			Spike	Source		%REC		RPD	
	Result	Limit	Units	Level	Result	%REC	Limits	RPD	Limit	Notes

**Batch 1509014 - EPA 5030 Soil MS**

**Blank (1509014-BLK1)**

Prepared: 09/02/15 Analyzed: 09/03/15

Acenaphthene	ND	0.00500	mg/kg
Anthracene	ND	0.00500	"
Benzo (a) anthracene	ND	0.00500	"
Benzo (b) fluoranthene	ND	0.00500	"
Benzo (k) fluoranthene	ND	0.00500	"
Benzo (a) pyrene	ND	0.00500	"
Chrysene	ND	0.00500	"
Dibenz (a,h) anthracene	ND	0.00500	"
Fluoranthene	ND	0.00500	"
Fluorene	ND	0.00500	"
Indeno (1,2,3-cd) pyrene	ND	0.00500	"
Naphthalene	ND	0.00500	"
Pyrene	ND	0.00500	"

Surrogate: 2-Methylnaphthalene-d10	0.0249		"	0.0330	75.4	50-150
Surrogate: Fluoranthene-d10	0.0333		"	0.0330	101	50-150

**LCS (1509014-BS1)**

Prepared: 09/02/15 Analyzed: 09/03/15

Acenaphthene	0.0251	0.00500	mg/kg	0.0330	76.0	48-131
Anthracene	0.0310	0.00500	"	0.0330	93.8	48-135
Benzo (a) anthracene	0.0337	0.00500	"	0.0330	102	37-142
Benzo (b) fluoranthene	0.0372	0.00500	"	0.0330	113	35-139
Benzo (k) fluoranthene	0.0323	0.00500	"	0.0330	97.9	30-139
Benzo (a) pyrene	0.0331	0.00500	"	0.0330	100	41-132
Chrysene	0.0313	0.00500	"	0.0330	94.8	30-136
Dibenz (a,h) anthracene	0.0367	0.00500	"	0.0330	111	24-127
Fluoranthene	0.0308	0.00500	"	0.0330	93.3	50-139
Fluorene	0.0287	0.00500	"	0.0330	86.8	50-130
Indeno (1,2,3-cd) pyrene	0.0341	0.00500	"	0.0330	103	26-139
Naphthalene	0.0308	0.00500	"	0.0330	93.3	40-135
Pyrene	0.0253	0.00500	"	0.0330	76.7	39-141

Surrogate: 2-Methylnaphthalene-d10	0.0287		"	0.0330	87.1	50-150
Surrogate: Fluoranthene-d10	0.0293		"	0.0330	88.8	50-150

Summit Scientific

The results in this report apply to the samples analyzed in accordance with the chain of custody document. This analytical report must be reproduced in its entirety.



LT Environmental, Inc.  
4600 West 60th Avenue  
Arvada CO, 80003

Project: PDC - Easton #2 Spread  
Project Number: 0188-11023  
Project Manager: Brett Forkner

Reported:  
09/04/15 14:33

**Semivolatile Organic Compounds by EPA Method 8270D SIM - Quality Control**  
**Summit Scientific**

Analyte	Reporting			Spike	Source		%REC		RPD	
	Result	Limit	Units	Level	Result	%REC	Limits	RPD	Limit	Notes

**Batch 1509014 - EPA 5030 Soil MS**

Matrix Spike (1509014-MS1)		Source: 1508232-06			Prepared: 09/02/15		Analyzed: 09/03/15			
Acenaphthene	0.0285	0.00500	mg/kg	0.0333	ND	85.5	27-140			
Anthracene	0.0240	0.00500	"	0.0333	ND	72.1	23-144			
Benzo (a) anthracene	0.0392	0.00500	"	0.0333	0.00366	107	12-168			
Benzo (b) fluoranthene	0.0515	0.00500	"	0.0333	0.0146	111	10-170			
Benzo (k) fluoranthene	0.0342	0.00500	"	0.0333	0.00351	92.0	11-150			
Benzo (a) pyrene	0.0365	0.00500	"	0.0333	0.00673	89.3	11-162			
Chrysene	0.0817	0.00500	"	0.0333	0.0164	196	10-200			
Dibenz (a,h) anthracene	0.0300	0.00500	"	0.0333	ND	89.9	10-200			
Fluoranthene	0.0267	0.00500	"	0.0333	0.00674	59.8	18-157			
Fluorene	0.0317	0.00500	"	0.0333	0.00326	85.4	37-133			
Indeno (1,2,3-cd) pyrene	0.0295	0.00500	"	0.0333	0.00343	78.2	10-161			
Naphthalene	0.0463	0.00500	"	0.0333	0.0147	94.9	10-157			
Pyrene	0.0813	0.00500	"	0.0333	0.0216	179	10-200			
Surrogate: 2-Methylnaphthalene-d10		0.0189	"	0.0333		56.8	50-150			
Surrogate: Fluoranthene-d10		0.0174	"	0.0333		52.2	50-150			

Matrix Spike Dup (1509014-MSD1)		Source: 1508232-06			Prepared: 09/02/15		Analyzed: 09/03/15			
Acenaphthene	0.0308	0.00500	mg/kg	0.0331	ND	93.0	27-140	7.71	15	
Anthracene	0.0230	0.00500	"	0.0331	ND	69.6	23-144	4.28	29	
Benzo (a) anthracene	0.0401	0.00500	"	0.0331	0.00366	110	12-168	2.24	65	
Benzo (b) fluoranthene	0.0546	0.00500	"	0.0331	0.0146	121	10-170	5.85	18	
Benzo (k) fluoranthene	0.0370	0.00500	"	0.0331	0.00351	101	11-150	7.94	32	
Benzo (a) pyrene	0.0391	0.00500	"	0.0331	0.00673	97.6	11-162	6.75	27	
Chrysene	0.0819	0.00500	"	0.0331	0.0164	198	10-200	0.203	88	
Dibenz (a,h) anthracene	0.0320	0.00500	"	0.0331	ND	96.7	10-128	6.64	20	
Fluoranthene	0.0260	0.00500	"	0.0331	0.00674	58.0	18-157	2.74	31	
Fluorene	0.0356	0.00500	"	0.0331	0.00326	97.6	37-133	11.4	16	
Indeno (1,2,3-cd) pyrene	0.0325	0.00500	"	0.0331	0.00343	87.7	10-161	9.57	22	
Naphthalene	0.0502	0.00500	"	0.0331	0.0147	107	10-157	8.13	24	
Pyrene	0.0681	0.00500	"	0.0331	0.0216	140	10-166	17.7	57	
Surrogate: 2-Methylnaphthalene-d10		0.0273	"	0.0331		82.6	50-150			
Surrogate: Fluoranthene-d10		0.0205	"	0.0331		62.0	50-150			

Summit Scientific

The results in this report apply to the samples analyzed in accordance with the chain of custody document. This analytical report must be reproduced in its entirety.



LT Environmental, Inc.  
4600 West 60th Avenue  
Arvada CO, 80003

Project: PDC - Easton #2 Spread  
Project Number: 0188-11023  
Project Manager: Brett Forkner

Reported:  
09/04/15 14:33

**Total Metals by EPA Method 6020 - Dry Weight Basis - Quality Control**  
**Summit Scientific**

Analyte	Reporting			Spike	Source		%REC		RPD	
	Result	Limit	Units	Level	Result	%REC	Limits	RPD	Limit	Notes

**Batch 1509002 - EPA 3050B**

**Blank (1509002-BLK1)**

Prepared: 09/01/15 Analyzed: 09/02/15

Arsenic	ND	0.100	mg/kg wet
Barium	ND	0.100	"
Arsenic	ND	0.100	"
Boron	ND	1.00	"
Cadmium	ND	0.100	"
Chromium	ND	0.500	"
Copper	ND	0.500	"
Lead	ND	0.100	"
Nickel	ND	0.100	"
Selenium	ND	0.0500	"
Silver	ND	0.100	"
Zinc	ND	10.0	"

**LCS (1509002-BS1)**

Prepared: 09/01/15 Analyzed: 09/02/15

Arsenic	41.4	0.100	mg/kg wet	44.4	93.3	62.3-117
Barium	152	0.100	"	176	86.3	68-115
Arsenic	41.4	0.100	"	44.4	93.3	62.3-117
Boron	56.8	1.00	"	82.8	68.6	49.3-115
Cadmium	81.0	0.100	"	88.8	91.2	67.1-116
Chromium	28.4	0.500	"	31.8	89.1	63.3-121
Copper	52.4	0.500	"	57.6	91.0	69.4-115
Lead	70.8	0.100	"	72.8	97.3	70.9-120
Nickel	52.9	0.100	"	56.8	93.1	68.2-118
Selenium	40.2	0.0500	"	40.0	100	55.9-119
Silver	14.6	0.100	"	15.9	91.8	59-121
Zinc	85.7	10.0	"	93.2	91.9	65.7-121

**Duplicate (1509002-DUP1)**

Source: 1508232-01

Prepared: 09/01/15 Analyzed: 09/03/15

Arsenic	6.55	0.108	mg/kg dry	6.88	4.98	20	
Barium	601	0.108	"	446	29.5	20	QR-03
Boron	0.923	1.08	"	1.41	42.0	20	QR-03
Arsenic	6.55	0.108	"	6.88	4.98	20	
Cadmium	0.557	0.108	"	0.774	32.7	20	QR-03
Chromium	12.6	0.539	"	12.5	0.766	20	
Copper	19.8	0.539	"	20.5	3.28	20	
Lead	11.2	0.108	"	10.4	7.63	20	
Nickel	16.7	0.108	"	17.9	7.14	20	
Selenium	1.48	0.0539	"	1.98	29.2	20	QR-03
Silver	0.141	0.108	"	0.149	4.99	20	

Summit Scientific

The results in this report apply to the samples analyzed in accordance with the chain of custody document. This analytical report must be reproduced in its entirety.



LT Environmental, Inc.  
4600 West 60th Avenue  
Arvada CO, 80003

Project: PDC - Easton #2 Spread  
Project Number: 0188-11023  
Project Manager: Brett Forkner

Reported:  
09/04/15 14:33

**Total Metals by EPA Method 6020 - Dry Weight Basis - Quality Control**  
**Summit Scientific**

Analyte	Reporting			Spike	Source		%REC		RPD	
	Result	Limit	Units	Level	Result	%REC	Limits	RPD	Limit	Notes

**Batch 1509002 - EPA 3050B**

Duplicate (1509002-DUP1)			Source: 1508232-01		Prepared: 09/01/15		Analyzed: 09/03/15			
Zinc	66.9	10.8	mg/kg dry		77.5			14.8	20	
Matrix Spike (1509002-MS1)			Source: 1508232-01		Prepared: 09/01/15		Analyzed: 09/03/15			
Arsenic	45.7	0.108	mg/kg dry	41.0	6.88	94.7	75-125			
Barium	1170	0.108	"	41.0	446	NR	75-125			QM-07
Boron	27.7	1.08	"	41.0	1.41	64.1	75-125			QM-07
Arsenic	45.7	0.108	"	41.0	6.88	94.7	75-125			
Cadmium	2.57	0.108	"	2.05	0.774	87.6	75-125			
Chromium	50.1	0.539	"	41.0	12.5	91.7	75-125			
Copper	55.6	0.539	"	41.0	20.5	85.6	75-125			
Lead	28.8	0.108	"	20.5	10.4	89.9	75-125			
Nickel	55.0	0.108	"	41.0	17.9	90.3	75-125			
Selenium	5.63	0.0539	"	4.10	1.98	89.1	75-125			
Silver	2.08	0.108	"	2.05	0.149	94.2	75-125			
Zinc	102	10.8	"	41.0	77.5	59.2	75-125			QM-07

Matrix Spike Dup (1509002-MSD1)			Source: 1508232-01		Prepared: 09/01/15		Analyzed: 09/03/15			
Arsenic	51.5	0.108	mg/kg dry	42.7	6.88	104	75-125	11.9	25	
Barium	1270	0.108	"	42.7	446	NR	75-125	8.20	25	QM-07
Arsenic	51.5	0.108	"	42.7	6.88	104	75-125	11.9	25	
Boron	30.2	1.08	"	42.7	1.41	67.4	75-125	8.63	25	QM-07
Cadmium	2.87	0.108	"	2.14	0.774	98.0	75-125	11.0	25	
Chromium	55.3	0.539	"	42.7	12.5	100	75-125	9.96	25	
Copper	61.7	0.539	"	42.7	20.5	96.4	75-125	10.4	25	
Lead	31.6	0.108	"	21.4	10.4	99.6	75-125	9.48	25	
Nickel	60.1	0.108	"	42.7	17.9	98.6	75-125	8.91	25	
Selenium	6.30	0.0539	"	4.27	1.98	101	75-125	11.2	25	
Silver	2.26	0.108	"	2.14	0.149	98.6	75-125	8.24	25	
Zinc	121	10.8	"	42.7	77.5	101	75-125	17.0	25	

Summit Scientific

The results in this report apply to the samples analyzed in accordance with the chain of custody document. This analytical report must be reproduced in its entirety.



LT Environmental, Inc.  
4600 West 60th Avenue  
Arvada CO, 80003

Project: PDC - Easton #2 Spread  
Project Number: 0188-11023  
Project Manager: Brett Forkner

**Reported:**  
09/04/15 14:33

**Total Mercury by EPA Method 7471 - Quality Control**  
**Summit Scientific**

Analyte	Reporting			Spike	Source		%REC		RPD	
	Result	Limit	Units	Level	Result	%REC	Limits	RPD	Limit	Notes

**Batch 1509018 - EPA 7471A**

**Blank (1509018-BLK1)**

Prepared: 09/02/15 Analyzed: 09/03/15

Mercury ND 0.0500 mg/kg wet

**LCS (1509018-BS1)**

Prepared: 09/02/15 Analyzed: 09/03/15

Mercury 0.512 0.0500 mg/kg wet 0.500 102 80-120

**Duplicate (1509018-DUP1)**

**Source: 1508232-02**

Prepared: 09/02/15 Analyzed: 09/03/15

Mercury 0.0438 0.0573 mg/kg dry 0.0432 1.38 20

**Matrix Spike (1509018-MS1)**

**Source: 1508232-02**

Prepared: 09/02/15 Analyzed: 09/03/15

Mercury 0.564 0.0573 mg/kg dry 0.525 0.0432 99.2 80-120

**Matrix Spike Dup (1509018-MSD1)**

**Source: 1508232-02**

Prepared: 09/02/15 Analyzed: 09/03/15

Mercury 0.508 0.0460 mg/kg dry 0.460 0.0432 101 80-120 10.4 20

Summit Scientific

*The results in this report apply to the samples analyzed in accordance with the chain of custody document. This analytical report must be reproduced in its entirety.*





LT Environmental, Inc.  
4600 West 60th Avenue  
Arvada CO, 80003

Project: PDC - Easton #2 Spread  
Project Number: 0188-11023  
Project Manager: Brett Forkner

Reported:  
09/04/15 14:33

**Hexavalent Chromium by EPA 7196 - Quality Control**  
**Summit Scientific**

Analyte	Reporting			Spike	Source	%REC		RPD		
	Result	Limit	Units	Level	Result	%REC	Limits	RPD	Limit	Notes

**Batch 1508243 - General Preparation**

<b>Blank (1508243-BLK1)</b>				Prepared: 08/31/15 Analyzed: 09/01/15							
Chromium, Hexavalent	ND	1.00	mg/kg wet								
<b>LCS (1508243-BS1)</b>				Prepared: 08/31/15 Analyzed: 09/01/15							
Chromium, Hexavalent	19.1	1.00	mg/kg wet	19.9		95.9	80-120				
<b>Duplicate (1508243-DUP1)</b>				Source: 1508188-01 Prepared: 08/31/15 Analyzed: 09/01/15							
Chromium, Hexavalent	ND	1.17	mg/kg dry		ND				20		
<b>Matrix Spike (1508243-MS1)</b>				Source: 1508188-01 Prepared: 08/31/15 Analyzed: 09/01/15							
Chromium, Hexavalent	0.903	1.13	mg/kg dry	22.5	ND	4.01	80-120				QM-07
<b>Matrix Spike (1508243-MS2)</b>				Source: 1509001-01 Prepared: 08/31/15 Analyzed: 09/01/15							
Chromium, Hexavalent	ND	1.00	mg/kg wet	19.5	0.787	NR	80-120				QM-07
<b>Post Spike (1508243-PS1)</b>				Source: 1508188-01 Prepared: 08/31/15 Analyzed: 09/01/15							
Chromium, Hexavalent	0.233		mg/kg	0.498	ND	46.7	0-200				

Summit Scientific

The results in this report apply to the samples analyzed in accordance with the chain of custody document. This analytical report must be reproduced in its entirety.



LT Environmental, Inc.  
4600 West 60th Avenue  
Arvada CO, 80003

Project: PDC - Easton #2 Spread  
Project Number: 0188-11023  
Project Manager: Brett Forkner

Reported:  
09/04/15 14:33

**Soluble Nutrients by EPA 6020/Mod. USDA60 6(2, 3A) - Dry Weight Basis - Quality Control**  
**Summit Scientific**

Analyte	Reporting			Spike	Source	%REC		RPD		
	Result	Limit	Units	Level	Result	%REC	Limits	RPD	Limit	Notes

**Batch 1509007 - General Preparation**

**Blank (1509007-BLK1)**

Prepared: 09/01/15 Analyzed: 09/03/15

Calcium	ND	10.0	mg/kg wet
Magnesium	ND	5.00	"
Sodium	ND	5.00	"

**LCS (1509007-BS1)**

Prepared: 09/01/15 Analyzed: 09/03/15

Calcium	559	10.0	mg/kg wet	500	112	82.9-118
Magnesium	523	5.00	"	500	105	77.1-123
Sodium	589	5.00	"	500	118	71-129

**Duplicate (1509007-DUP1)**

Source: 1508232-02

Prepared: 09/01/15 Analyzed: 09/03/15

Calcium	881	11.5	mg/kg dry	861	2.31	200
Magnesium	64.9	5.73	"	57.3	12.4	200
Sodium	2240	5.73	"	2100	6.69	200

**Matrix Spike (1509007-MS1)**

Source: 1508232-02

Prepared: 09/01/15 Analyzed: 09/03/15

Calcium	1240	9.39	mg/kg dry	469	861	81.1	75-125
Magnesium	549	4.69	"	469	57.3	105	75-125
Sodium	2280	4.69	"	469	2100	39.6	75-125

QM-07

**Matrix Spike Dup (1509007-MSD1)**

Source: 1508232-02

Prepared: 09/01/15 Analyzed: 09/03/15

Calcium	1310	9.55	mg/kg dry	477	861	94.2	75-125	5.42	25
Magnesium	577	4.77	"	477	57.3	109	75-125	4.95	25
Sodium	2370	4.77	"	477	2100	56.5	75-125	3.61	25

QM-07

Summit Scientific

The results in this report apply to the samples analyzed in accordance with the chain of custody document. This analytical report must be reproduced in its entirety.



LT Environmental, Inc.  
4600 West 60th Avenue  
Arvada CO, 80003

Project: PDC - Easton #2 Spread

Project Number: 0188-11023  
Project Manager: Brett Forkner

Reported:  
09/04/15 14:33

**Physical Parameters by APHA/ASTM/EPA Methods - Quality Control**  
**Summit Scientific**

Analyte	Reporting			Spike	Source	%REC		RPD		
	Result	Limit	Units	Level	Result	%REC	Limits	RPD	Limit	Notes

**Batch 1508244 - General Preparation**

**Duplicate (1508244-DUP1)**      **Source: 1508188-02**      Prepared: 08/31/15      Analyzed: 09/01/15

% Solids	80.3		%		80.1			0.300	20	
----------	------	--	---	--	------	--	--	-------	----	--

**Batch 1509028 - General Preparation**

**LCS (1509028-BS1)**      Prepared & Analyzed: 09/03/15

pH	8.01	0.100	pH Units	8.00	100	95-105				
----	------	-------	----------	------	-----	--------	--	--	--	--

**Duplicate (1509028-DUP1)**      **Source: 1508228-01**      Prepared & Analyzed: 09/03/15

pH	9.21	0.100	pH Units		9.28			0.757	20	
----	------	-------	----------	--	------	--	--	-------	----	--

**Batch 1509029 - General Preparation**

**Blank (1509029-BLK1)**      Prepared & Analyzed: 09/03/15

Specific Conductance (EC)	ND	0.0100	mmhos/cm							
---------------------------	----	--------	----------	--	--	--	--	--	--	--

**LCS (1509029-BS1)**      Prepared & Analyzed: 09/03/15

Specific Conductance (EC)	0.507	0.0100	mmhos/cm	0.500	101	90-110				
---------------------------	-------	--------	----------	-------	-----	--------	--	--	--	--

**Duplicate (1509029-DUP1)**      **Source: 1508228-01**      Prepared & Analyzed: 09/03/15

Specific Conductance (EC)	1.30	0.0100	mmhos/cm		1.42			8.87	20	
---------------------------	------	--------	----------	--	------	--	--	------	----	--

Summit Scientific

*The results in this report apply to the samples analyzed in accordance with the chain of custody document. This analytical report must be reproduced in its entirety.*



LT Environmental, Inc.  
4600 West 60th Avenue  
Arvada CO, 80003

Project: PDC - Easton #2 Spread

Project Number: 0188-11023  
Project Manager: Brett Forkner

**Reported:**  
09/04/15 14:33

### Notes and Definitions

QR-03 The RPD value for the sample duplicate or MS/MSD was outside of QC acceptance limits due to matrix interference. QC batch accepted based on LCS and/or LCSD recovery and/or RPD values.

QM-07 The spike recovery was outside acceptance limits for the MS and/or MSD. The batch was accepted based on acceptable LCS/LCSD recovery.

DET Analyte DETECTED

ND Analyte NOT DETECTED at or above the reporting limit

NR Not Reported

dry Sample results reported on a dry weight basis

RPD Relative Percent Difference

Summit Scientific

*The results in this report apply to the samples analyzed in accordance with the chain of custody document. This analytical report must be reproduced in its entirety.*

**ATTACHMENT 6**

**SUBSEQUENT POST-INCORPORATION LABORATORY ANALYTICAL REPORT**



# Summit Scientific

---

741 Corporate Circle – Suite I ♦ Golden, Colorado 80401

303.277.9310 - laboratory ♦ 303.277.9531 - fax

May 06, 2016

Dan Hosler  
LT Environmental, Inc.  
4600 West 60th Avenue  
Arvada, CO 80003  
RE: Easton #2

Enclosed are the results of analyses for samples received by Summit Scientific on 04/28/16 11:30. If you have any questions concerning this report, please feel free to contact me.

Sincerely,

A handwritten signature in black ink, appearing to read 'P. Shrewsbury', with a stylized, cursive script.

Paul Shrewsbury  
President



LT Environmental, Inc.  
4600 West 60th Avenue  
Arvada CO, 80003

Project: Easton #2  
Project Number: 018815003  
Project Manager: Dan Hosler

**Reported:**  
05/06/16 07:54

### ANALYTICAL REPORT FOR SAMPLES

Sample ID	Laboratory ID	Matrix	Date Sampled	Date Received
SS01	1604255-01	Soil	04/26/16 11:00	04/28/16 11:30
SS02	1604255-02	Soil	04/26/16 11:10	04/28/16 11:30
SS03	1604255-03	Soil	04/26/16 11:15	04/28/16 11:30
SS04	1604255-04	Soil	04/26/16 11:20	04/28/16 11:30
SS05	1604255-05	Soil	04/26/16 11:30	04/28/16 11:30
SS06	1604255-06	Soil	04/26/16 11:40	04/28/16 11:30
SS07	1604255-07	Soil	04/26/16 11:50	04/28/16 11:30
SS08	1604255-08	Soil	04/26/16 12:00	04/28/16 11:30

Summit Scientific

*The results in this report apply to the samples analyzed in accordance with the chain of custody document. This analytical report must be reproduced in its entirety.*



LT Environmental, Inc.  
4600 West 60th Avenue  
Arvada CO, 80003

Project: Easton #2  
Project Number: 018815003  
Project Manager: Dan Hosler

Reported:  
05/06/16 07:54

# Summit Scientific

1604255

741 Corporate Circle Suite I • Golden, Colorado 80401  
303-277-9310 • 303-374-5933 Fax

Page 1 of 1

Client: LT Environmental, Inc.  
Address: 4600 West 60th Ave  
City/State/Zip: Arvada, CO 80003  
Phone: 303-433-9788 Fax: 303-433-1432  
Sampler Name: DHosler

Project Manager: DHosler  
E-Mail: dhosler@ltenv.com, bforckner@ltenv.com  
Project Name: Easton #2  
Project Number: 018815003

Sample Description	Date Sampled	Time Sampled	Number of Containers	Preservative				Matrix			Analyze For:				Special Instructions	
				HCl	HNO <sub>3</sub>	None	Other (Specify)	Groundwater	Soil	Air - Canister Serial #	Other (Specify)	Arsenic (As <sub>2</sub> O <sub>3</sub> )	EC	SAR		PAH's - 16 Compounds
SS01	4/26/16	1100	1						X			X				
SS02		1110	1									X	X			
SS03		1115	1									X	X			
SS04		1120	1													
SS05		1130	1													
SS06		1140	1									X				
SS07		1150	1									X	X	X		
SS08		1200	1													
-Only run for benz(a)pyrene on PAH analysis																
Relinquished by:	Date/Time: 4/26/16	Received by:	Date/Time: 4/28/16	Turn Around Time (Check)				Notes:								
Relinquished by:	Date/Time:	Received by:	Date/Time:	Same Day <input type="checkbox"/> 72 Hours <input type="checkbox"/>												
				24 Hours <input type="checkbox"/> Standard <input checked="" type="checkbox"/>												
Relinquished by:	Date/Time:	Received in Lab by:	Date/Time:	Sample Integrity:				81°C								
				Temperature Upon Receipt: Intact: Yes <input checked="" type="checkbox"/> No <input type="checkbox"/>												

www.s2scientific.com





LT Environmental, Inc.  
4600 West 60th Avenue  
Arvada CO, 80003

Project: Easton #2  
Project Number: 018815003  
Project Manager: Dan Hosler

Reported:  
05/06/16 07:54

Summit Scientific Effective Date: 06/11/12

**Sample Receipt Checklist**

S<sub>2</sub> Work Order: 1604255

Client: LTE Client Project ID: Easton #2

Shipped Via: HD Airbill #: \_\_\_\_\_  
(UPS, FedEx, Hand Delivered, Pick-up, etc.)

Matrix (check all that apply):    Air ☒ Soil/Solid    Water    Other: \_\_\_\_\_  
(Describe)

Temp (°C) 8.1°C

Thermometer ID: **61857155**

	Yes	No	N/A	Comments (if any)
If samples require cooling, was the temperature just above 0°C to ≤ 6°C <sup>(1)</sup> ?				
NOTE: If samples are delivered within 5 hours of sampling, this requirement is waived provided that there is evidence that cooling has begun.				
Were all samples received intact <sup>(1)</sup> ?	<input checked="" type="checkbox"/>	<input checked="" type="checkbox"/>		
Was adequate sample volume provided <sup>(1)</sup> ?	<input checked="" type="checkbox"/>			
If custody seals are present, are they intact <sup>(1)</sup> ?	<input checked="" type="checkbox"/>		<input checked="" type="checkbox"/>	
Are short holding time analytes or samples with HTs due within 48 hours present?			<input checked="" type="checkbox"/>	
Is a chain-of-custody (COC) form present and filled out completely <sup>(1)</sup> ?	<input checked="" type="checkbox"/>			
Does the COC agree with the number and type of sample bottles received <sup>(1)</sup> ?	<input checked="" type="checkbox"/>			
Do the sample IDs on the bottle labels match the COC <sup>(1)</sup> ?	<input checked="" type="checkbox"/>			
Is the COC properly relinquished by the client w/ date and time recorded <sup>(1)</sup> ?	<input checked="" type="checkbox"/>			
For volatiles in water – is there headspace present? If yes, contact client and note in narrative.			<input checked="" type="checkbox"/>	
Are samples preserved that require preservation (excluding cooling) <sup>(1)</sup> ?			<input checked="" type="checkbox"/>	
Note the type of preservative in the Comments column – HCl, H <sub>2</sub> SO <sub>4</sub> , NaOH, etc.				
If samples are acid preserved for metals, is the pH ≤ 2 <sup>(1)</sup> ?			<input checked="" type="checkbox"/>	
Record the pH in Comments.				
If dissolved metals are requested, were samples field filtered.			<input checked="" type="checkbox"/>	
Additional Comments (if any):				
<sup>(1)</sup> If NO, then contact the client before proceeding with analysis and note in case narrative.				

Mindy Mach Custodian Printed Name MM Signature or Initials of Custodian 4/29/16 16:46 Date/Time



LT Environmental, Inc.  
4600 West 60th Avenue  
Arvada CO, 80003

Project: Easton #2  
Project Number: 018815003  
Project Manager: Dan Hosler

**Reported:**  
05/06/16 07:54

**SS01**  
**1604255-01 (Soil)**

**Summit Scientific**

**Total Metals by EPA Method 6020 - Dry Weight Basis**

Date Sampled: **04/26/16 11:00**

Analyte	Result	Reporting		Units	Dilution	Batch	Prepared	Analyzed	Method	Notes
		Limit								
Arsenic	6.07	0.126		mg/kg dry	1	1604312	04/29/16	04/29/16	EPA 6020A	

**Physical Parameters by APHA/ASTM/EPA Methods**

Date Sampled: **04/26/16 11:00**

Analyte	Result	Reporting		Units	Dilution	Batch	Prepared	Analyzed	Method	Notes
		Limit								
% Solids	79.1			%	1	1604313	04/29/16	04/29/16	% calculation	

Summit Scientific

*The results in this report apply to the samples analyzed in accordance with the chain of custody document. This analytical report must be reproduced in its entirety.*



LT Environmental, Inc.  
4600 West 60th Avenue  
Arvada CO, 80003

Project: Easton #2  
Project Number: 018815003  
Project Manager: Dan Hosler

Reported:  
05/06/16 07:54

**SS02**  
**1604255-02 (Soil)**

**Summit Scientific**

**Total Metals by EPA Method 6020 - Dry Weight Basis**

Date Sampled: **04/26/16 11:10**

Analyte	Result	Reporting Limit	Units	Dilution	Batch	Prepared	Analyzed	Method	Notes
Arsenic	6.05	0.125	mg/kg dry	1	1604312	04/29/16	04/29/16	EPA 6020A	

**Soluble Nutrients by EPA 6020/Mod. USDA60 6(2, 3A) - Dry Weight Basis**

Date Sampled: **04/26/16 11:10**

Analyte	Result	Reporting Limit	Units	Dilution	Batch	Prepared	Analyzed	Method	Notes
Calcium	1460	10.3	mg/kg dry	1	1605024	05/03/16	05/03/16	EPA 6020/Mod. USDA60 6(2, 3A)	
Magnesium	203	5.13	"	"	"	"	"	"	
Sodium	323	5.13	"	"	"	"	"	"	

Date Sampled: **04/26/16 11:10**

Analyte	Result	Reporting Limit	Units	Dilution	Batch	Prepared	Analyzed	Method	Notes
Sodium Adsorption Ratio	2.10		units	"	1605030	05/04/16	05/04/16	"	

**Physical Parameters by APHA/ASTM/EPA Methods**

Date Sampled: **04/26/16 11:10**

Analyte	Result	Reporting Limit	Units	Dilution	Batch	Prepared	Analyzed	Method	Notes
Specific Conductance (EC)	3.28	0.0100	mmhos/cm	1	1604314	04/29/16	04/29/16	SM 2510B	

Date Sampled: **04/26/16 11:10**

Analyte	Result	Reporting Limit	Units	Dilution	Batch	Prepared	Analyzed	Method	Notes
% Solids	80.0		%	"	1604313	04/29/16	04/29/16	% calculation	

Summit Scientific

The results in this report apply to the samples analyzed in accordance with the chain of custody document. This analytical report must be reproduced in its entirety.



LT Environmental, Inc.  
4600 West 60th Avenue  
Arvada CO, 80003

Project: Easton #2  
Project Number: 018815003  
Project Manager: Dan Hosler

**Reported:**  
05/06/16 07:54

**SS03**  
**1604255-03 (Soil)**

**Summit Scientific**

**Total Metals by EPA Method 6020 - Dry Weight Basis**

Date Sampled: **04/26/16 11:15**

Analyte	Result	Reporting Limit	Units	Dilution	Batch	Prepared	Analyzed	Method	Notes
Arsenic	5.51	0.122	mg/kg dry	1	1604312	04/29/16	04/29/16	EPA 6020A	

**Soluble Nutrients by EPA 6020/Mod. USDA60 6(2, 3A) - Dry Weight Basis**

Date Sampled: **04/26/16 11:15**

Analyte	Result	Reporting Limit	Units	Dilution	Batch	Prepared	Analyzed	Method	Notes
Calcium	730	9.36	mg/kg dry	1	1605024	05/03/16	05/03/16	EPA 6020/Mod. USDA60 6(2, 3A)	
Magnesium	114	4.68	"	"	"	"	"	"	
Sodium	599	4.68	"	"	"	"	"	"	

Date Sampled: **04/26/16 11:15**

Analyte	Result	Reporting Limit	Units	Dilution	Batch	Prepared	Analyzed	Method	Notes
Sodium Adsorption Ratio	5.44		units	"	1605030	05/04/16	05/04/16	"	

**Physical Parameters by APHA/ASTM/EPA Methods**

Date Sampled: **04/26/16 11:15**

Analyte	Result	Reporting Limit	Units	Dilution	Batch	Prepared	Analyzed	Method	Notes
Specific Conductance (EC)	3.90	0.0100	mmhos/cm	1	1604314	04/29/16	04/29/16	SM 2510B	

Date Sampled: **04/26/16 11:15**

Analyte	Result	Reporting Limit	Units	Dilution	Batch	Prepared	Analyzed	Method	Notes
% Solids	82.3		%	"	1604313	04/29/16	04/29/16	% calculation	

Summit Scientific

The results in this report apply to the samples analyzed in accordance with the chain of custody document. This analytical report must be reproduced in its entirety.



LT Environmental, Inc.  
4600 West 60th Avenue  
Arvada CO, 80003

Project: Easton #2  
Project Number: 018815003  
Project Manager: Dan Hosler

**Reported:**  
05/06/16 07:54

**SS04**  
**1604255-04 (Soil)**

**Summit Scientific**

**Total Metals by EPA Method 6020 - Dry Weight Basis**

Date Sampled: **04/26/16 11:20**

Analyte	Result	Reporting Limit	Units	Dilution	Batch	Prepared	Analyzed	Method	Notes
Arsenic	8.31	0.125	mg/kg dry	1	1604312	04/29/16	04/29/16	EPA 6020A	

**Physical Parameters by APHA/ASTM/EPA Methods**

Date Sampled: **04/26/16 11:20**

Analyte	Result	Reporting Limit	Units	Dilution	Batch	Prepared	Analyzed	Method	Notes
% Solids	79.8		%	1	1604313	04/29/16	04/29/16	% calculation	

Summit Scientific

*The results in this report apply to the samples analyzed in accordance with the chain of custody document. This analytical report must be reproduced in its entirety.*



LT Environmental, Inc.  
4600 West 60th Avenue  
Arvada CO, 80003

Project: Easton #2  
Project Number: 018815003  
Project Manager: Dan Hosler

**Reported:**  
05/06/16 07:54

**SS05**  
**1604255-05 (Soil)**

**Summit Scientific**

**Total Metals by EPA Method 6020 - Dry Weight Basis**

Date Sampled: **04/26/16 11:30**

Analyte	Result	Reporting Limit	Units	Dilution	Batch	Prepared	Analyzed	Method	Notes
Arsenic	7.59	0.127	mg/kg dry	1	1604312	04/29/16	04/29/16	EPA 6020A	

**Physical Parameters by APHA/ASTM/EPA Methods**

Date Sampled: **04/26/16 11:30**

Analyte	Result	Reporting Limit	Units	Dilution	Batch	Prepared	Analyzed	Method	Notes
% Solids	78.8		%	1	1604313	04/29/16	04/29/16	% calculation	

Summit Scientific

*The results in this report apply to the samples analyzed in accordance with the chain of custody document. This analytical report must be reproduced in its entirety.*



LT Environmental, Inc.  
4600 West 60th Avenue  
Arvada CO, 80003

Project: Easton #2  
Project Number: 018815003  
Project Manager: Dan Hosler

**Reported:**  
05/06/16 07:54

**SS06**  
**1604255-06 (Soil)**

**Summit Scientific**

**Total Metals by EPA Method 6020 - Dry Weight Basis**

Date Sampled: **04/26/16 11:40**

Analyte	Result	Reporting Limit	Units	Dilution	Batch	Prepared	Analyzed	Method	Notes
Arsenic	<b>8.74</b>	0.120	mg/kg dry	1	1604312	04/29/16	04/29/16	EPA 6020A	

**Physical Parameters by APHA/ASTM/EPA Methods**

Date Sampled: **04/26/16 11:40**

Analyte	Result	Reporting Limit	Units	Dilution	Batch	Prepared	Analyzed	Method	Notes
Specific Conductance (EC)	<b>5.90</b>	0.0100	mmhos/cm	1	1604314	04/29/16	04/29/16	SM 2510B	

Date Sampled: **04/26/16 11:40**

Analyte	Result	Reporting Limit	Units	Dilution	Batch	Prepared	Analyzed	Method	Notes
% Solids	<b>83.2</b>		%	"	1604313	04/29/16	04/29/16	% calculation	

Summit Scientific

*The results in this report apply to the samples analyzed in accordance with the chain of custody document. This analytical report must be reproduced in its entirety.*



LT Environmental, Inc.  
4600 West 60th Avenue  
Arvada CO, 80003

Project: Easton #2  
Project Number: 018815003  
Project Manager: Dan Hosler

Reported:  
05/06/16 07:54

**SS07**  
**1604255-07 (Soil)**

**Summit Scientific**

**Semivolatile Organic Compounds by EPA Method 8270D SIM**

Date Sampled: **04/26/16 11:50**

Analyte	Result	Reporting Limit	Units	Dilution	Batch	Prepared	Analyzed	Method	Notes
Benzo (a) pyrene	ND	0.00500	mg/kg	1	1605016	05/02/16	05/04/16	EPA 8270D SIM	

Date Sampled: **04/26/16 11:50**

Analyte	Result	Reporting Limit	Units	Dilution	Batch	Prepared	Analyzed	Method	Notes
Surrogate: Fluoranthene-d10		45.2 %	30-150		"	"	"	"	
Surrogate: 2-Methylnaphthalene-d10		40.8 %	30-150		"	"	"	"	

**Total Metals by EPA Method 6020 - Dry Weight Basis**

Date Sampled: **04/26/16 11:50**

Analyte	Result	Reporting Limit	Units	Dilution	Batch	Prepared	Analyzed	Method	Notes
Arsenic	4.77	0.120	mg/kg dry	1	1604312	04/29/16	04/29/16	EPA 6020A	

**Soluble Nutrients by EPA 6020/Mod. USDA60 6(2, 3A) - Dry Weight Basis**

Date Sampled: **04/26/16 11:50**

Analyte	Result	Reporting Limit	Units	Dilution	Batch	Prepared	Analyzed	Method	Notes
Calcium	1790	9.52	mg/kg dry	1	1605024	05/03/16	05/03/16	EPA 6020/Mod. USDA60 6(2, 3A)	
Magnesium	240	4.76	"	"	"	"	"	"	
Sodium	52.2	4.76	"	"	"	"	"	"	

Date Sampled: **04/26/16 11:50**

Analyte	Result	Reporting Limit	Units	Dilution	Batch	Prepared	Analyzed	Method	Notes
Sodium Adsorption Ratio	0.307		units	"	1605030	05/04/16	05/04/16	"	

Summit Scientific

The results in this report apply to the samples analyzed in accordance with the chain of custody document. This analytical report must be reproduced in its entirety.





LT Environmental, Inc.  
4600 West 60th Avenue  
Arvada CO, 80003

Project: Easton #2  
Project Number: 018815003  
Project Manager: Dan Hosler

**Reported:**  
05/06/16 07:54

**SS07**  
**1604255-07 (Soil)**

**Summit Scientific**

**Physical Parameters by APHA/ASTM/EPA Methods**

Date Sampled: **04/26/16 11:50**

Analyte	Result	Reporting Limit	Units	Dilution	Batch	Prepared	Analyzed	Method	Notes
Specific Conductance (EC)	<b>0.436</b>	0.0100	mmhos/cm	1	1604314	04/29/16	04/29/16	SM 2510B	

Date Sampled: **04/26/16 11:50**

Analyte	Result	Reporting Limit	Units	Dilution	Batch	Prepared	Analyzed	Method	Notes
% Solids	<b>83.1</b>		%	"	1604313	04/29/16	04/29/16	% calculation	

Summit Scientific

*The results in this report apply to the samples analyzed in accordance with the chain of custody document. This analytical report must be reproduced in its entirety.*



LT Environmental, Inc.  
4600 West 60th Avenue  
Arvada CO, 80003

Project: Easton #2  
Project Number: 018815003  
Project Manager: Dan Hosler

**Reported:**  
05/06/16 07:54

**SS08**  
**1604255-08 (Soil)**

**Summit Scientific**

**Total Metals by EPA Method 6020 - Dry Weight Basis**

Date Sampled: **04/26/16 12:00**

Analyte	Result	Reporting Limit	Units	Dilution	Batch	Prepared	Analyzed	Method	Notes
Arsenic	6.97	0.126	mg/kg dry	1	1604312	04/29/16	04/29/16	EPA 6020A	

**Physical Parameters by APHA/ASTM/EPA Methods**

Date Sampled: **04/26/16 12:00**

Analyte	Result	Reporting Limit	Units	Dilution	Batch	Prepared	Analyzed	Method	Notes
% Solids	79.4		%	1	1604313	04/29/16	04/29/16	% calculation	

Summit Scientific

*The results in this report apply to the samples analyzed in accordance with the chain of custody document. This analytical report must be reproduced in its entirety.*



LT Environmental, Inc.  
4600 West 60th Avenue  
Arvada CO, 80003

Project: Easton #2  
Project Number: 018815003  
Project Manager: Dan Hosler

Reported:  
05/06/16 07:54

## Semivolatile Organic Compounds by EPA Method 8270D SIM - Quality Control

### Summit Scientific

Analyte	Reporting			Spike	Source		%REC		RPD	
	Result	Limit	Units	Level	Result	%REC	Limits	RPD	Limit	Notes

#### Batch 1605016 - EPA 5030 Soil MS

##### Blank (1605016-BLK1)

Prepared: 05/02/16 Analyzed: 05/04/16

Benzo (a) pyrene ND 0.00500 mg/kg

Surrogate: Fluoranthene-d10 0.0276 " 0.0332 83.0 50-150

Surrogate: 2-Methylnaphthalene-d10 0.0244 " 0.0332 73.5 50-150

##### LCS (1605016-BS1)

Prepared: 05/02/16 Analyzed: 05/04/16

Benzo (a) pyrene 0.0331 0.00500 mg/kg 0.0330 100 14-178

Surrogate: Fluoranthene-d10 0.0244 " 0.0330 73.9 50-150

Surrogate: 2-Methylnaphthalene-d10 0.0210 " 0.0330 63.7 50-150

##### Matrix Spike (1605016-MS1)

Source: 1604255-07

Prepared: 05/02/16 Analyzed: 05/05/16

Benzo (a) pyrene 0.0335 0.00500 mg/kg 0.0332 ND 101 11-148

Surrogate: Fluoranthene-d10 0.0246 " 0.0332 74.1 50-150

Surrogate: 2-Methylnaphthalene-d10 0.0228 " 0.0332 68.5 50-150

##### Matrix Spike Dup (1605016-MSD1)

Source: 1604255-07

Prepared: 05/02/16 Analyzed: 05/05/16

Benzo (a) pyrene 0.0300 0.00500 mg/kg 0.0329 ND 91.3 11-148 11.0 13

Surrogate: Fluoranthene-d10 0.0223 " 0.0329 67.8 50-150

Surrogate: 2-Methylnaphthalene-d10 0.0209 " 0.0329 63.4 50-150

Summit Scientific

The results in this report apply to the samples analyzed in accordance with the chain of custody document. This analytical report must be reproduced in its entirety.



LT Environmental, Inc.  
4600 West 60th Avenue  
Arvada CO, 80003

Project: Easton #2  
Project Number: 018815003  
Project Manager: Dan Hosler

Reported:  
05/06/16 07:54

**Total Metals by EPA Method 6020 - Dry Weight Basis - Quality Control**  
**Summit Scientific**

Analyte	Reporting			Spike	Source	%REC		RPD		
	Result	Limit	Units	Level	Result	%REC	Limits	RPD	Limit	Notes

**Batch 1604312 - EPA 3050B**

**Blank (1604312-BLK1)**

Prepared & Analyzed: 04/29/16

Arsenic ND 0.100 mg/kg wet

**LCS (1604312-BS1)**

Prepared & Analyzed: 04/29/16

Arsenic 41.7 0.100 mg/kg wet 40.0 104 59.7-113

**Duplicate (1604312-DUP1)**

Source: 1604244-01

Prepared & Analyzed: 04/29/16

Arsenic 4.07 0.208 mg/kg dry 3.54 13.9 20

**Matrix Spike (1604312-MS1)**

Source: 1604244-01

Prepared & Analyzed: 04/29/16

Arsenic 80.5 0.208 mg/kg dry 79.0 3.54 97.5 75-125

**Matrix Spike Dup (1604312-MSD1)**

Source: 1604244-01

Prepared & Analyzed: 04/29/16

Arsenic 83.5 0.208 mg/kg dry 82.2 3.54 97.3 75-125 3.70 25

**Reference (1604312-SRM1)**

Prepared & Analyzed: 04/29/16

Arsenic 0.707 0.100 mg/kg wet 40.0 1.77 0-200

Summit Scientific

*The results in this report apply to the samples analyzed in accordance with the chain of custody document. This analytical report must be reproduced in its entirety.*



LT Environmental, Inc.  
4600 West 60th Avenue  
Arvada CO, 80003

Project: Easton #2  
Project Number: 018815003  
Project Manager: Dan Hosler

Reported:  
05/06/16 07:54

**Soluble Nutrients by EPA 6020/Mod. USDA60 6(2, 3A) - Dry Weight Basis - Quality Control**  
**Summit Scientific**

Analyte	Reporting			Spike	Source		%REC		RPD	
	Result	Limit	Units	Level	Result	%REC	Limits	RPD	Limit	Notes

**Batch 1605024 - General Preparation**

**Blank (1605024-BLK1)**

Prepared & Analyzed: 05/03/16

Calcium	ND	10.0	mg/kg wet
Magnesium	ND	5.00	"
Sodium	ND	5.00	"

**LCS (1605024-BS1)**

Prepared & Analyzed: 05/03/16

Calcium	585	10.0	mg/kg wet	500	117	82.9-118
Magnesium	545	5.00	"	500	109	77.1-123
Sodium	544	5.00	"	500	109	71-129

**Duplicate (1605024-DUP1)**

Source: 1604239-01

Prepared & Analyzed: 05/03/16

Calcium	1480	8.86	mg/kg dry	1420	4.52	200
Magnesium	341	4.43	"	318	6.96	200
Sodium	122	4.43	"	126	2.91	200

**Matrix Spike (1605024-MS1)**

Source: 1604239-01

Prepared & Analyzed: 05/03/16

Calcium	1960	8.86	mg/kg dry	443	1420	122	75-125
Magnesium	852	4.43	"	443	318	121	75-125
Sodium	627	4.43	"	443	126	113	75-125

**Matrix Spike Dup (1605024-MSD1)**

Source: 1604239-01

Prepared & Analyzed: 05/03/16

Calcium	1970	8.86	mg/kg dry	443	1420	125	75-125	0.667	25
Magnesium	860	4.43	"	443	318	122	75-125	0.967	25
Sodium	599	4.43	"	443	126	107	75-125	4.55	25

Summit Scientific

The results in this report apply to the samples analyzed in accordance with the chain of custody document. This analytical report must be reproduced in its entirety.



LT Environmental, Inc.  
4600 West 60th Avenue  
Arvada CO, 80003

Project: Easton #2  
Project Number: 018815003  
Project Manager: Dan Hosler

**Reported:**  
05/06/16 07:54

**Physical Parameters by APHA/ASTM/EPA Methods - Quality Control**  
**Summit Scientific**

Analyte	Reporting			Spike	Source		%REC		RPD	
	Result	Limit	Units	Level	Result	%REC	Limits	RPD	Limit	Notes

**Batch 1604313 - General Preparation**

**Duplicate (1604313-DUP1)**      **Source: 1604244-01**      Prepared & Analyzed: 04/29/16

% Solids	43.0		%		48.0			11.0	20	
----------	------	--	---	--	------	--	--	------	----	--

**Batch 1604314 - General Preparation**

**Blank (1604314-BLK1)**      Prepared & Analyzed: 04/29/16

Specific Conductance (EC)	ND	0.0100	mmhos/cm							
---------------------------	----	--------	----------	--	--	--	--	--	--	--

**LCS (1604314-BS1)**      Prepared & Analyzed: 04/29/16

Specific Conductance (EC)	0.499	0.0100	mmhos/cm	0.500		99.8	90-110			
---------------------------	-------	--------	----------	-------	--	------	--------	--	--	--

**Duplicate (1604314-DUP1)**      **Source: 1604239-01**      Prepared & Analyzed: 04/29/16

Specific Conductance (EC)	0.896	0.0100	mmhos/cm		0.906			1.05	20	
---------------------------	-------	--------	----------	--	-------	--	--	------	----	--

Summit Scientific

*The results in this report apply to the samples analyzed in accordance with the chain of custody document. This analytical report must be reproduced in its entirety.*



LT Environmental, Inc.  
4600 West 60th Avenue  
Arvada CO, 80003

Project: Easton #2  
Project Number: 018815003  
Project Manager: Dan Hosler

**Reported:**  
05/06/16 07:54

### Notes and Definitions

DET Analyte DETECTED  
ND Analyte NOT DETECTED at or above the reporting limit  
NR Not Reported  
dry Sample results reported on a dry weight basis  
RPD Relative Percent Difference

A handwritten signature in black ink, appearing to be 'MSM'.