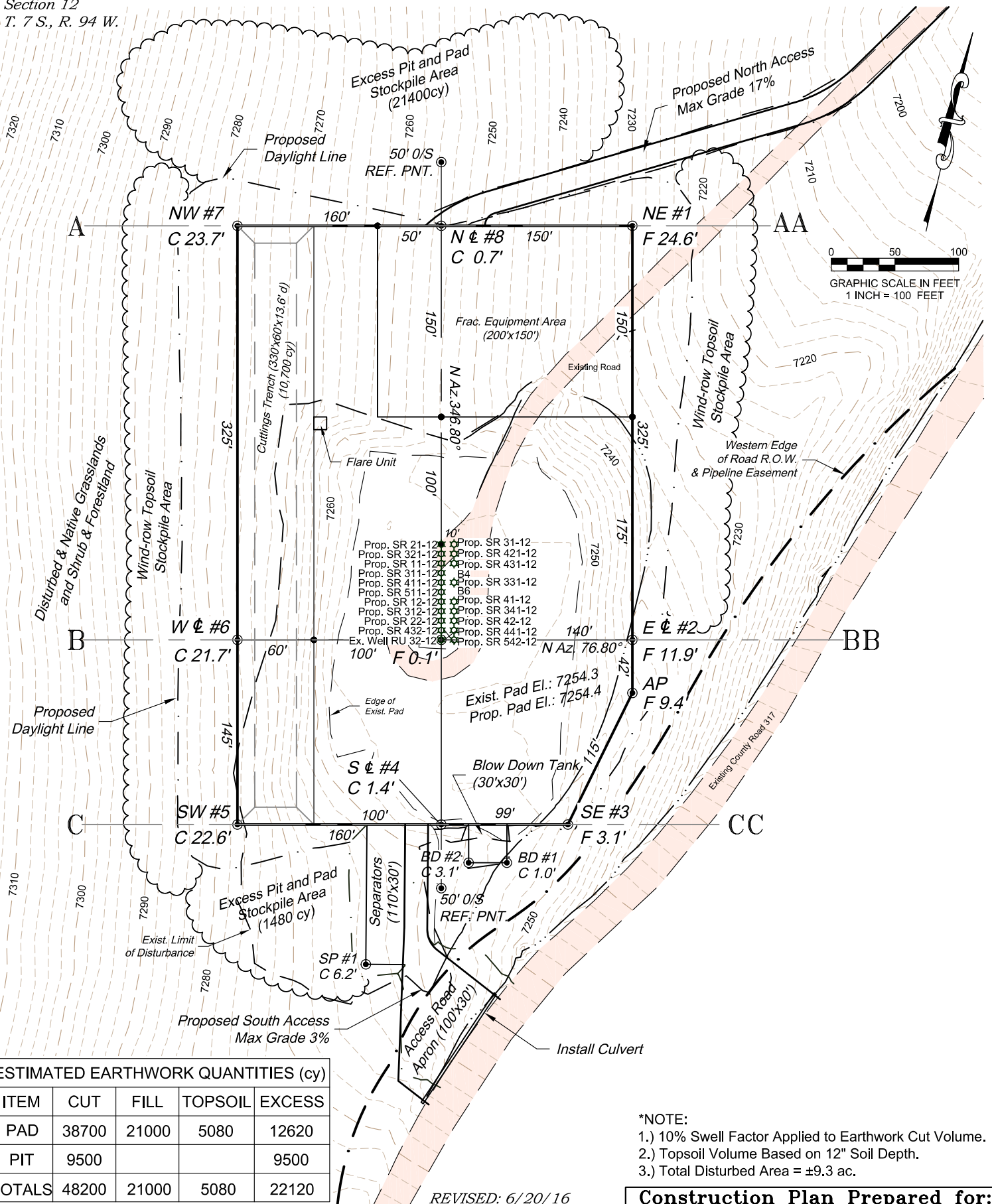


Section 12
T. 7 S., R. 94 W.



ESTIMATED EARTHWORK QUANTITIES (cy)

ITEM	CUT	FILL	TOPSOIL	EXCESS
PAD	38700	21000	5080	12620
PIT	9500			9500
TOTALS	48200	21000	5080	22120

*NOTE:

- 1.) 10% Swell Factor Applied to Earthwork Cut Volume.
- 2.) Topsoil Volume Based on 12" Soil Depth.
- 3.) Total Disturbed Area = ±9.3 ac.

REVISED: 6/20/16

136 East Third Street
Rifle, Colorado 81650
Ph. (970) 625-2720
Fax (970) 625-2773



BOOKCLIFF
Survey Services, Inc.

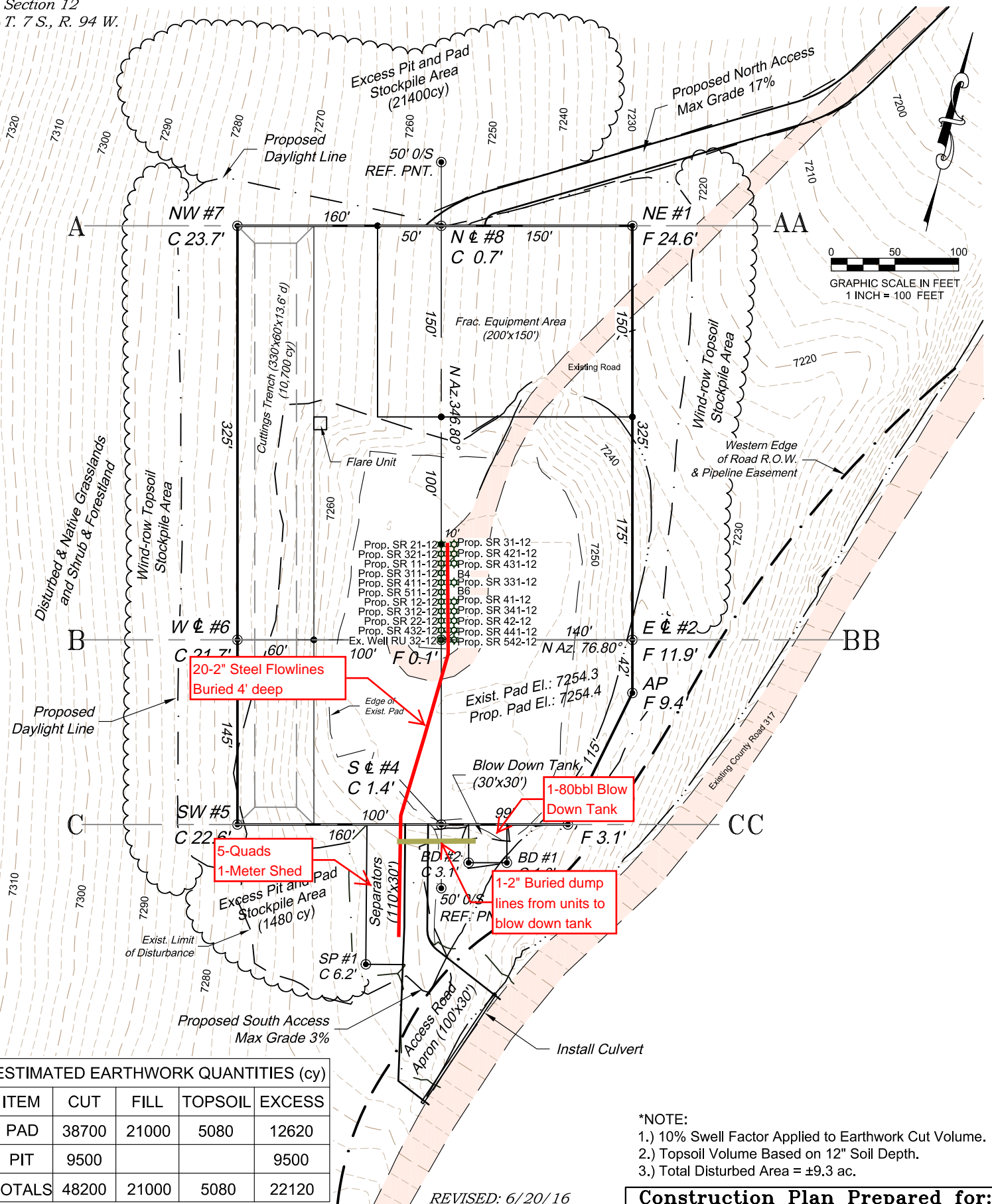
SCALE: 1" = 100'
DATE: 6/1/16
PLAT: 2 of 7
PROJECT: TEP Valley
DFT: cs



TEP Rocky Mountain LLC

RU 32-12 Drill Pad - Plat 2
CONSTRUCTION LAYOUT

Section 12
T. 7 S., R. 94 W.



ESTIMATED EARTHWORK QUANTITIES (cy)

ITEM	CUT	FILL	TOPSOIL	EXCESS
PAD	38700	21000	5080	12620
PIT	9500			9500
TOTALS	48200	21000	5080	22120

REVISED: 6/20/16

*NOTE:

- 1.) 10% Swell Factor Applied to Earthwork Cut Volume.
- 2.) Topsoil Volume Based on 12" Soil Depth.
- 3.) Total Disturbed Area = ±9.3 ac.

Construction Plan Prepared for:



TEP Rocky Mountain LLC

RU 32-12 Drill Pad - Plat 2

Facility Layout Drawing

136 East Third Street
Rifle, Colorado 81650
Ph. (970) 625-2720
Fax (970) 625-2773



BOOKCLIFF
Survey Services, Inc.

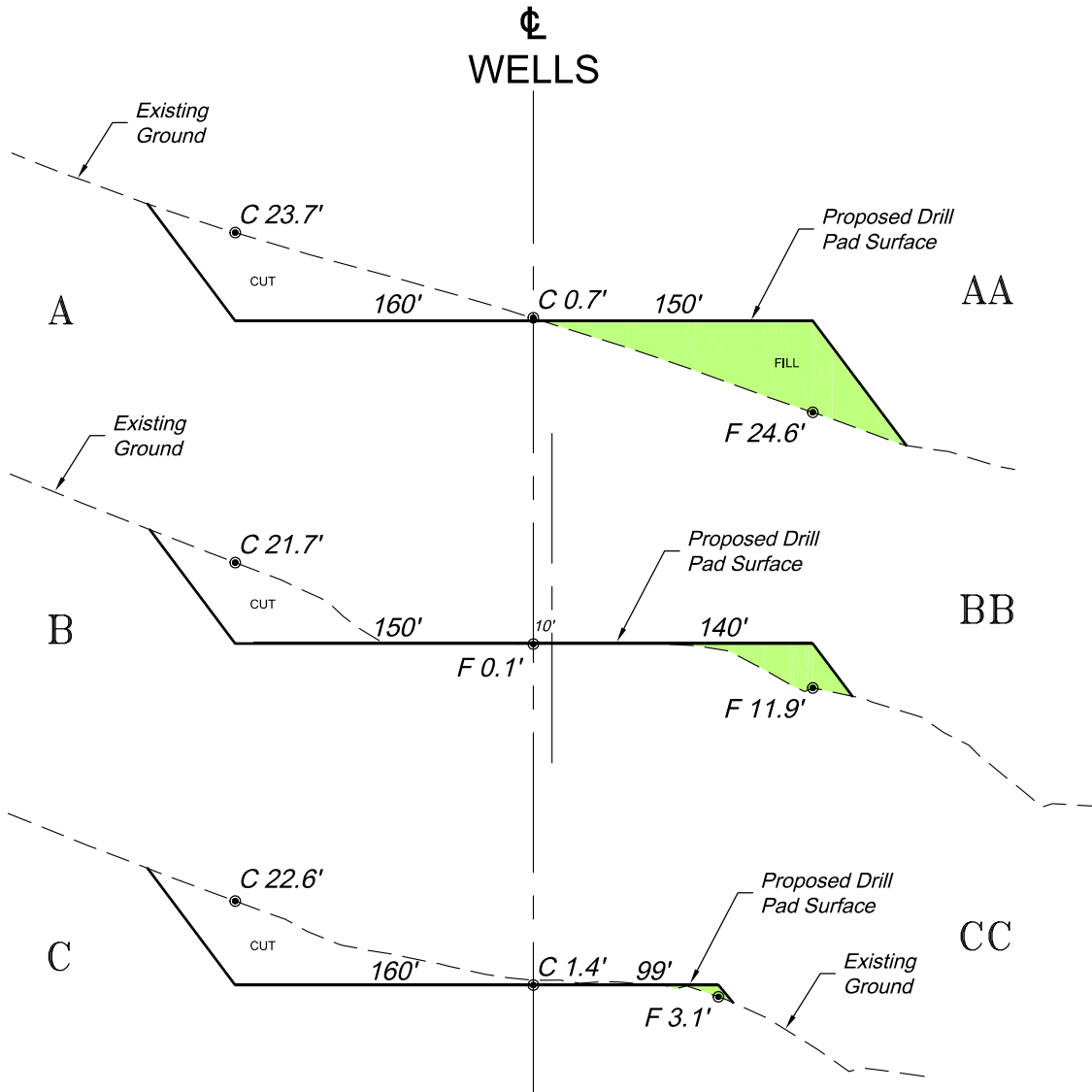
SCALE: 1" = 100'

DATE: 6/1/16

PLAT: 2 of 7

PROJECT: TEP Valley

DFT: cs



SCALE: Horiz.: 1" = 100'
Vert. : 1" = 50'

***NOTE:**
CUT SLOPES: 1.5:1
FILL SLOPES: 1.5:1,
UNLESS OTHERWISE NOTED.

REVISED: 6/20/16

136 East Third Street
Rifle, Colorado 81650
Ph. (970) 625-2720
Fax (970) 625-2773



SCALE: 1" = 100'
DATE: 6/1/16
PLAT: 3 of 7
PROJECT: TEP Valley
DFT: cs

Construction Plan Prepared for:



TEP Rocky Mountain LLC

RU 32-12 Drill Pad - Plat 3
CONSTRUCTION LAYOUT
CROSS SECTIONS