

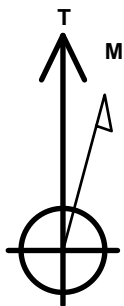
# PETROLEUM DEVELOPMENT CORP DJ Basin

Well Name: **Williams 28U-334**

Surface Location: Williams 5N67W28R Pad Sec.28-T5N-R67W  
 North American Datum 1983 , US State Plane 1983, Colorado Northern Zone  
 Ground Elevation: 4926.0  
 +N/-S +E/-W Northing Easting Latitude Longitude Slot  
 0.0 0.0 1380575.91 3169305.33 40.376490 -104.892310  
 Original Well Elev WELL @ 4949.0ft (Original Well Elev)

## DESIGN TARGET DETAILS

Name	TVD	+N/-S	+E/-W	Shape
SHL 517'FNL, 1156'FEL	1.0	0.0	0.0	Point
BHL 520'FNL, 500'FWL	6984.0	-28.9	-3739.1	Point
LP - 546'FNL & 831'FEL	7077.0	-28.9	324.5	Point



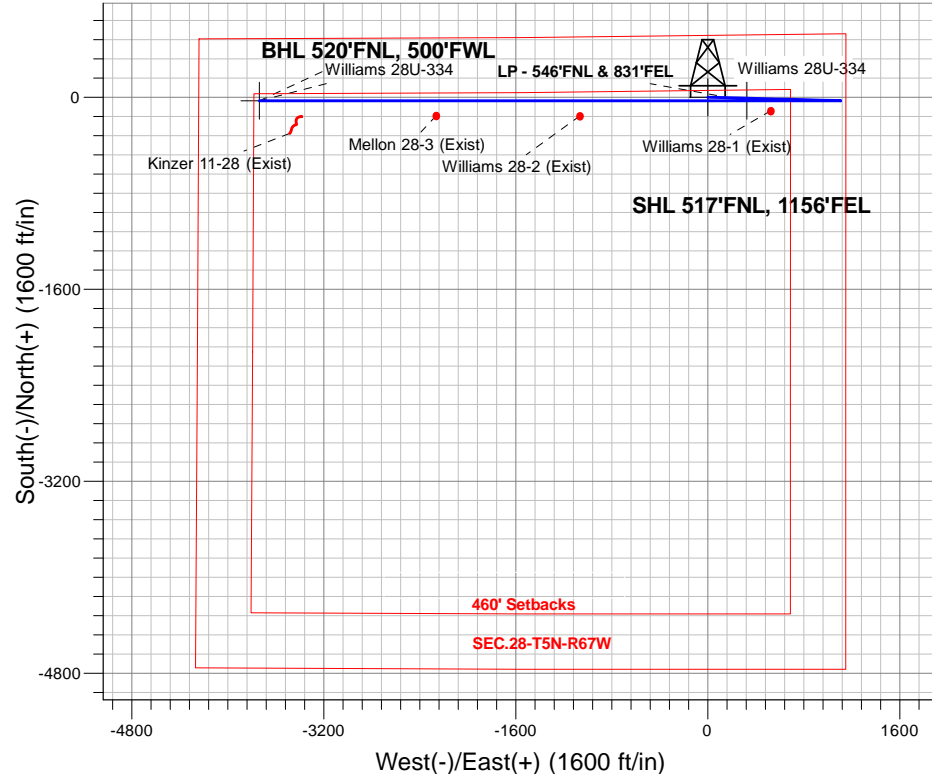
Azimuths to True North  
 Magnetic North: 8.28°

Magnetic Field  
 Strength: 52592.6snT  
 Dip Angle: 66.84°  
 Date: 4/26/2016  
 Model: IGRF2010

Williams 5N67W28R Pad Sec.28-T5N-R67W  
 Williams 28U-334  
 Plan #1 (4-26-16)  
 7:03, April 28 2016

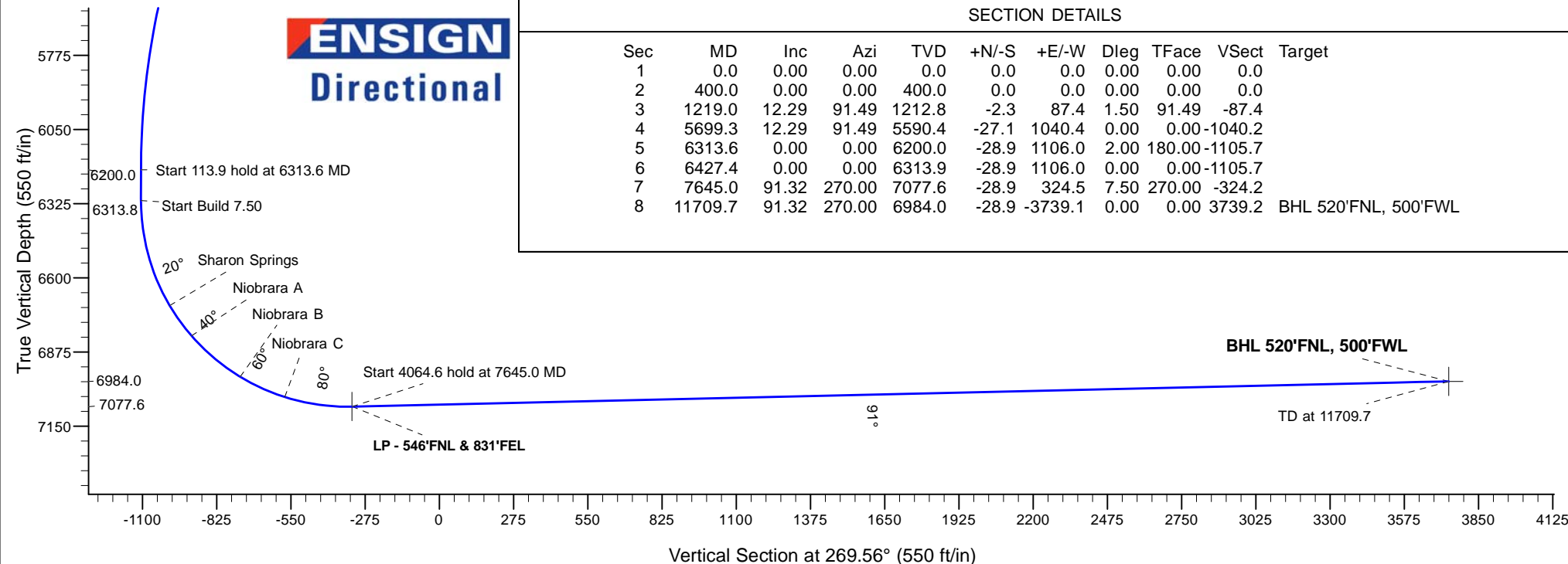
## ANNOTATIONS

TVD	MD	Annotation
400.0	400.0	KOP - Start Build 1.50
5590.4	5699.3	Start Drop -2.00
6200.0	6313.6	Start 113.9 hold at 6313.6 MD
6313.8	6427.4	Start Build 7.50
7077.6	7645.0	Start 4064.6 hold at 7645.0 MD
6984.0	11709.7	TD at 11709.7



## SECTION DETAILS

Sec	MD	Inc	Azi	TVD	+N/-S	+E/-W	Dleg	TFace	VSec	Target
1	0.0	0.00	0.00	0.0	0.0	0.0	0.00	0.00	0.0	
2	400.0	0.00	0.00	400.0	0.0	0.0	0.00	0.00	0.0	
3	1219.0	12.29	91.49	1212.8	-2.3	87.4	1.50	91.49	-87.4	
4	5699.3	12.29	91.49	5590.4	-27.1	1040.4	0.00	0.00	-1040.2	
5	6313.6	0.00	0.00	6200.0	-28.9	1106.0	2.00	180.00	-1105.7	
6	6427.4	0.00	0.00	6313.9	-28.9	1106.0	0.00	0.00	-1105.7	
7	7645.0	91.32	270.00	7077.6	-28.9	324.5	7.50	270.00	-324.2	
8	11709.7	91.32	270.00	6984.0	-28.9	-3739.1	0.00	0.00	3739.2	BHL 520'FNL, 500'FWL





# **PETROLEUM DEVELOPMENT CORP DJ Basin**

**SEC.28-T5N-R67W**

**Williams 5N67W28R Pad Sec.28-T5N-R67W**

**Williams 28U-334**

**Wellbore #1**

**Plan #1 (4-26-16)**

## **Anticollision Report**

**28 April, 2016**



