

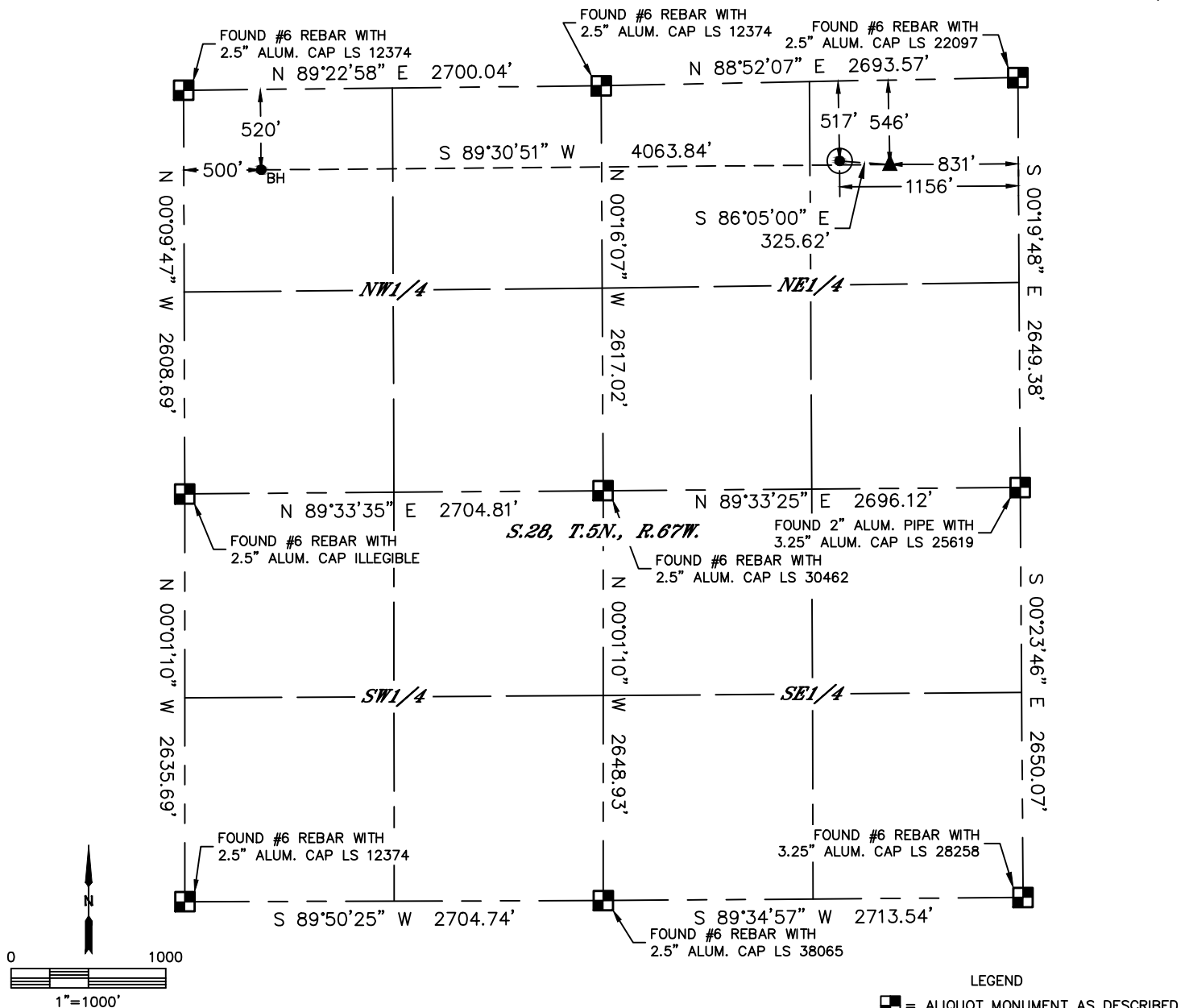


Lat40°, Inc. 6250 W. 10th Street, Unit 2, Greeley, CO 970-515-5294

WELL LOCATION CERTIFICATE

WILLIAMS 28U-334

SECTION: 28
TOWNSHIP: 5N
RANGE: 67W
6TH. P.M.
WELD COUNTY, CO



CLIENT: PDC ENERGY, INC.					LANDMAN: JEFF HINDMARSH				
INSTRUMENT OPERATOR: CHASE MILLER					SURVEY DATE: 10/20/2015		SURFACE USE: CROP LAND		
SHL FOOTAGE				SHL LAT °	SHL LONG °	SHL PDOP	SHL ELEV	SHL 1/4/1/4	SHL S-T-R
517	FNL	1156	FEL	40.37649	-104.89231	2.0	4926	NENE	28-5-67

BHL FOOTAGE				BHL LAT °	BHL LONG °	BHL S-T-R	EP LAT °	EP LONG °	EP S-T-R
520	FNL	500	FWL	40.37641	-104.90573	28-5-67	40.37642	-104.89114	28-5-67

- LEGEND
- = ALIQUOT MONUMENT AS DESCRIBED
 - = CALCULATED POSITION
 - = SURFACE HOLE LOCATION (SHL)
 - ▲ = ENTRY POINT LOCATION (EP)
 - BH = BOTTOM HOLE LOCATION (BHL)
 - ⊙ = EXISTING WELL
 - ⊙ = ABANDONED WELL

NOTE:

- 1) Bearings shown are Grid Bearings of the Colorado State Plane Coordinate System, North Zone, North American Datum 1983. The lineal dimensions as contained herein are based upon the "U.S. Survey Foot."
- 2) Distances to section lines measured at 90 degrees from said section lines.
- 3) Ground elevations are based on an observed GPS elevation (NAVD 1988 DATUM).
- 4) Latitude and Longitude shown are (NAD 83 DATUM).
- 5) IMPROVEMENTS: See LOCATION DRAWING for all visible improvements within 500' of oil and gas location.
- 6) This map does not represent a boundary survey.

NEAREST CULTURAL ITEMS	
BUILDING	±804' SE
BUILDING UNIT	±873' SE
HIGH OCCUPANCY BUILDING UNIT	5280'+
DESIGNATED OUTSIDE ACTIVITY AREA	5280'+
PUBLIC ROAD (COUNTY ROAD 54)	±504' N
ABOVE GROUND UTILITY	±301' E
RAILROAD	±4453' SW
PROPERTY LINE	±210' NE



Brian T. Brinkman—On behalf of Lat40°, Inc.
Colorado Licensed Professional Land Surveyor No. 38175
DATE: 7/6/2016
PROJECT#: 2015141