



July 13, 2016

VIA ELECTRONIC TRANSMITTAL

Director Matt Lepore
Colorado Oil and Gas Conservation Commission
1120 Lincoln Street Suite 801
Denver, Colorado 80203

RE: Rule 318.A.e.
Vetting 23
Vetting 24

Surface Location: SWNW, Section 15, Township 5 North, Range 65 West, Weld County, CO

Dear Mr. Lepore,

Extraction Oil and Gas is planning to drill the captioned horizontal wells in accordance with the provision of COGCC Rule 318A.e.

The proposed wellbore spacing unit consists of:

Section 17-5N-65W: SE/4 SW/4, S/2 SE/4

Section 16-5N-65W: S/2S/2

Section 20-5N-65W: NE/4 NW/4, N/2 NE/4

Section 21-5N-65W: N/2 NW/4, N/2 NE/4

The spacing unit is a 560-acre wellbore spacing unit for the Niobrara formation.

Extraction Oil and Gas hereby certifies to the Director that all Owners within the proposed spacing unit above were notified and 30 days have passed without objection.

If you have any questions or issues regarding this permit, please contact the undersigned at 720-481-2379.

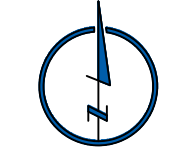
Respectfully,

Alyssa Andrews
Regulatory Analyst
Extraction Oil and Gas

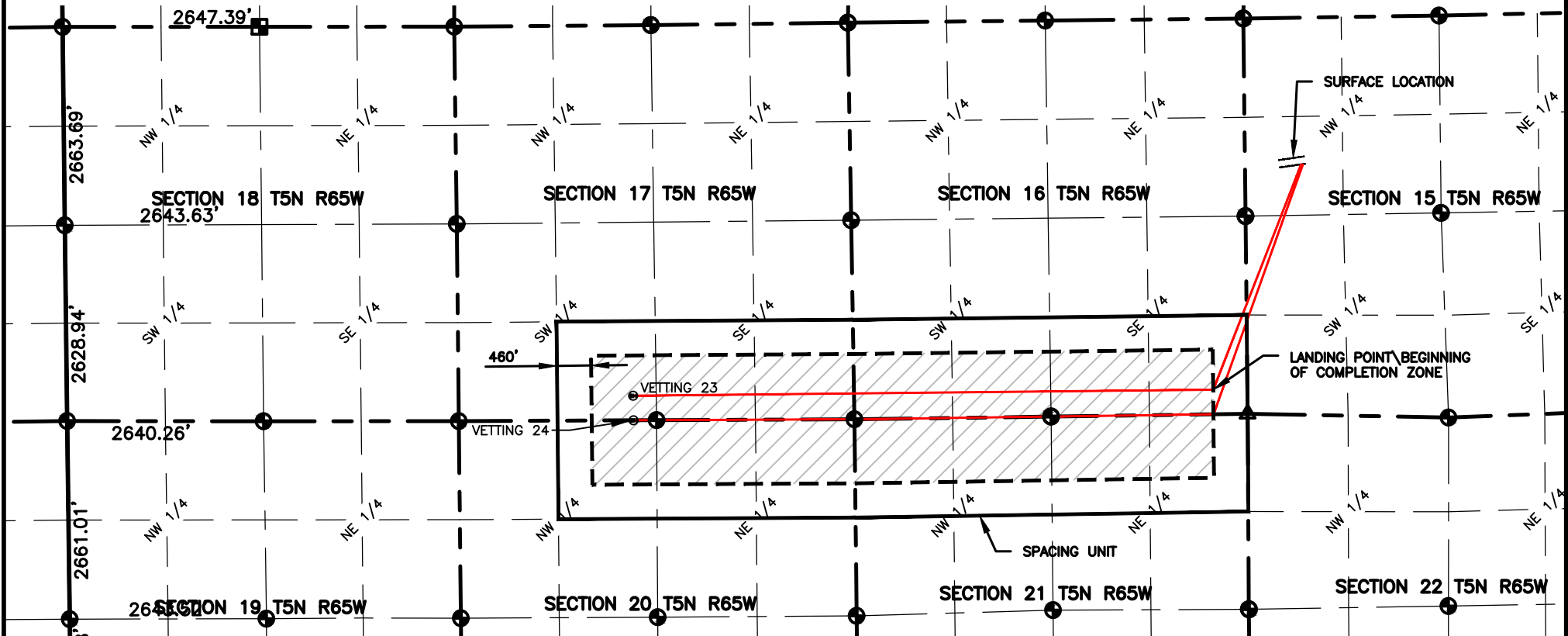
NAME: VETTING SOUTH

SPACING UNIT: SE/4 SW/4 & S/2 SE/4 SEC 17, S/S S/2 SEC 16, NE/4 NW/4 & N/2 NE/4 SEC 20, N/2 NW/4 & N/2 NE/4 SEC 21 T5N, 65W UNIT ACREAGE: 560

WELL NAME	SURFACE LOCATION				LANDING POINT\BEGIN HORIZONTAL COMPLETION ZONE				BOTTOM HOLE\END HORIZONTAL COMPLETION ZONE				COMPLETION ZONE BEARING	COMPLETION ZONE LENGTH
	DIST.	DIR.	DIST.	DIR.	DIST.	DIR.	DIST.	DIR.	DIST.	DIR.	DIST.	DIR.		
VETTING 23	1972'	FNL	734'	FWL	330'	FSL	460'	FEL	330'	FSL	2346'	FWL	S89°24'14"W	7795.64'
VETTING 24	1969'	FNL	758'	FWL	0'	FSL	460'	FEL	0'	FSL	2348'	FWL	S89°11'11"W, S89°12'12"W, S89°44'34"W & S89°44'10"W	2182.39', 2643.05', 2659.14' & 310.00'



0 2000
SCALE: 1"= 2000'
U.S. SURVEY FEET



LAMP RYNEARSON
& ASSOCIATES

4715 Innovation Drive 970.226.0342 | P
Fort Collins, CO 80525 970.226.0879 | F
www.LRA-Inc.com

PLANNED SPACING UNIT EXHIBIT
VETTING 15-H
VETTING SOUTH SPACING UNIT

LEGEND

- ⊕ ALIQUOT CORNER
- ⊙ BOTTOM HOLE
- △ COMPUTED ALIQUOT CORNER FROM MONUMENT ACCESSORIES
- COMPUTED FROM GLO RECORDS
- SECTION LINE
- - - SIXTEENTH LINE
- - - QUARTER SECTION LINE

DRAWN BY
KJW

DATE
2/26/16

COGCC ID

PROJECT - TASK NUMBER
0215036.00

BOOK AND PAGE
MRI-04 PG-6

SURFACE - LOCATION
SW /4, NW /4, SEC 15 T5N
R65W

PATH\FILENAME

P:_Engineering\0215036 Vetting 15 H\DRAWINGS\EXHIBITS\0215036PSU-Vetting-S.dwg