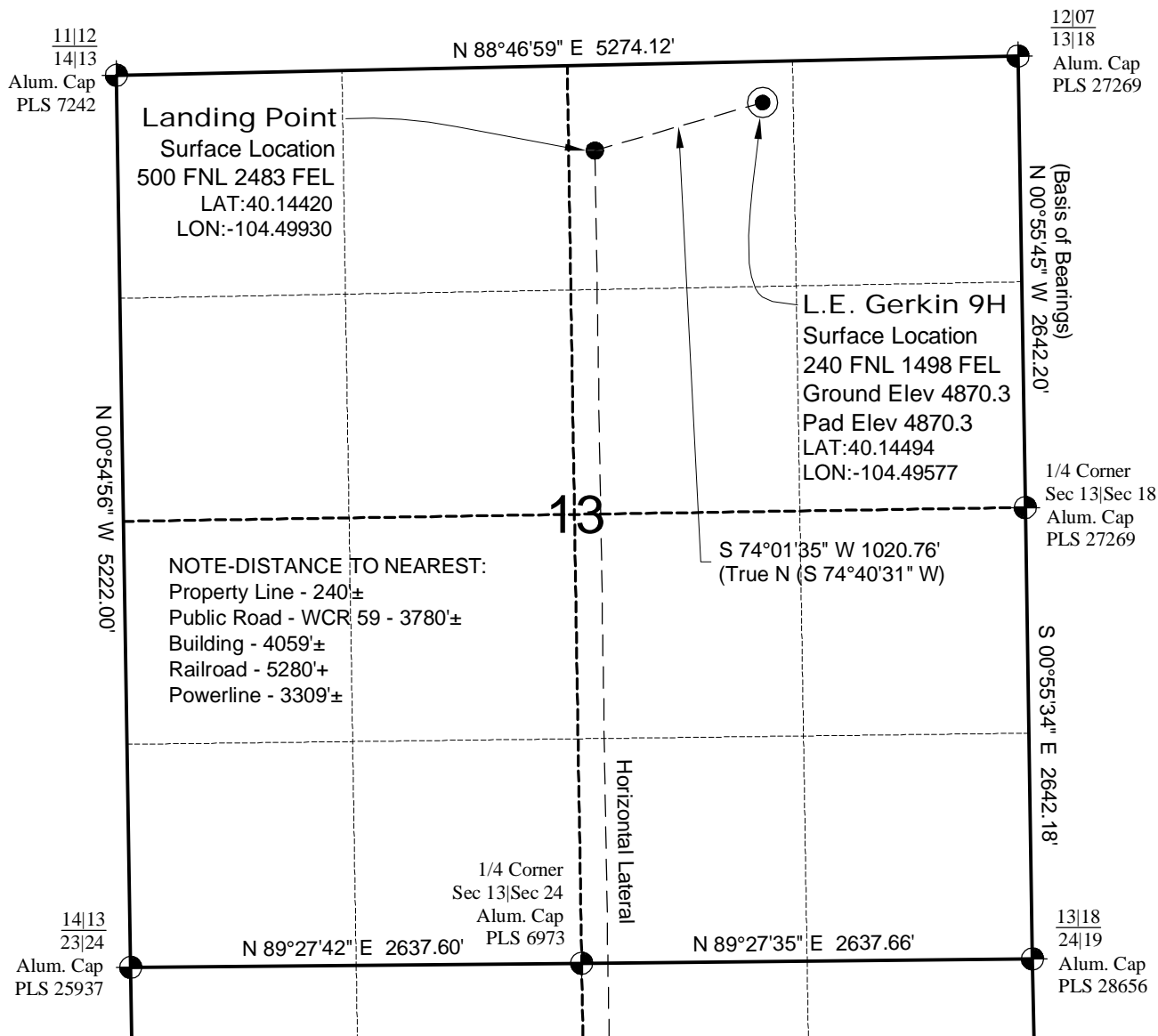


WELL LOCATION MAP

L.E. GERKIN 9H PAD

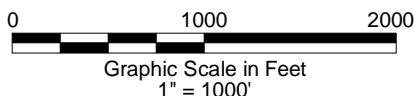


SURVEYOR'S STATEMENT

The undersigned hereby states that the well location shown hereon was staked on the ground based on existing monumentation and/or physical evidence found in the field and is correct to the best of my knowledge, information and belief.

NOTES

- 1.) Horizontal (NAD 83) and vertical (NAVD 88) datum is based on the Leica Geosystems SmartNet of Colorado.
- 2.) All directions, distances, and dimensions shown hereon are based on coordinates from the "Colorado coordinate system of 1983 north zone" (article 52 of title 38, C.R.S.).
- 3.) All section line dimensions shown hereon are based on field measurements of existing monuments and/or physical evidence found in the field unless otherwise indicated.
- 4.) Physical features shown hereon are for graphical representation only.
- 5.) See Form 2A for visible improvements within 500' of wellhead.
- 6.) Distances to nearest section lines are measured perpendicularly.
- 7.) This is not a land survey nor land survey plat.
- 8.) Date of Survey 9/30/14; Date of Drawing 10/24/14. REV 1
PDOP Reading: 1.4 Instrument Operator: Marc Woodard



GEO SURV

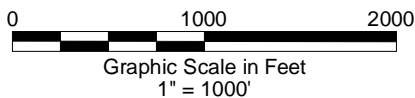
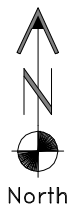
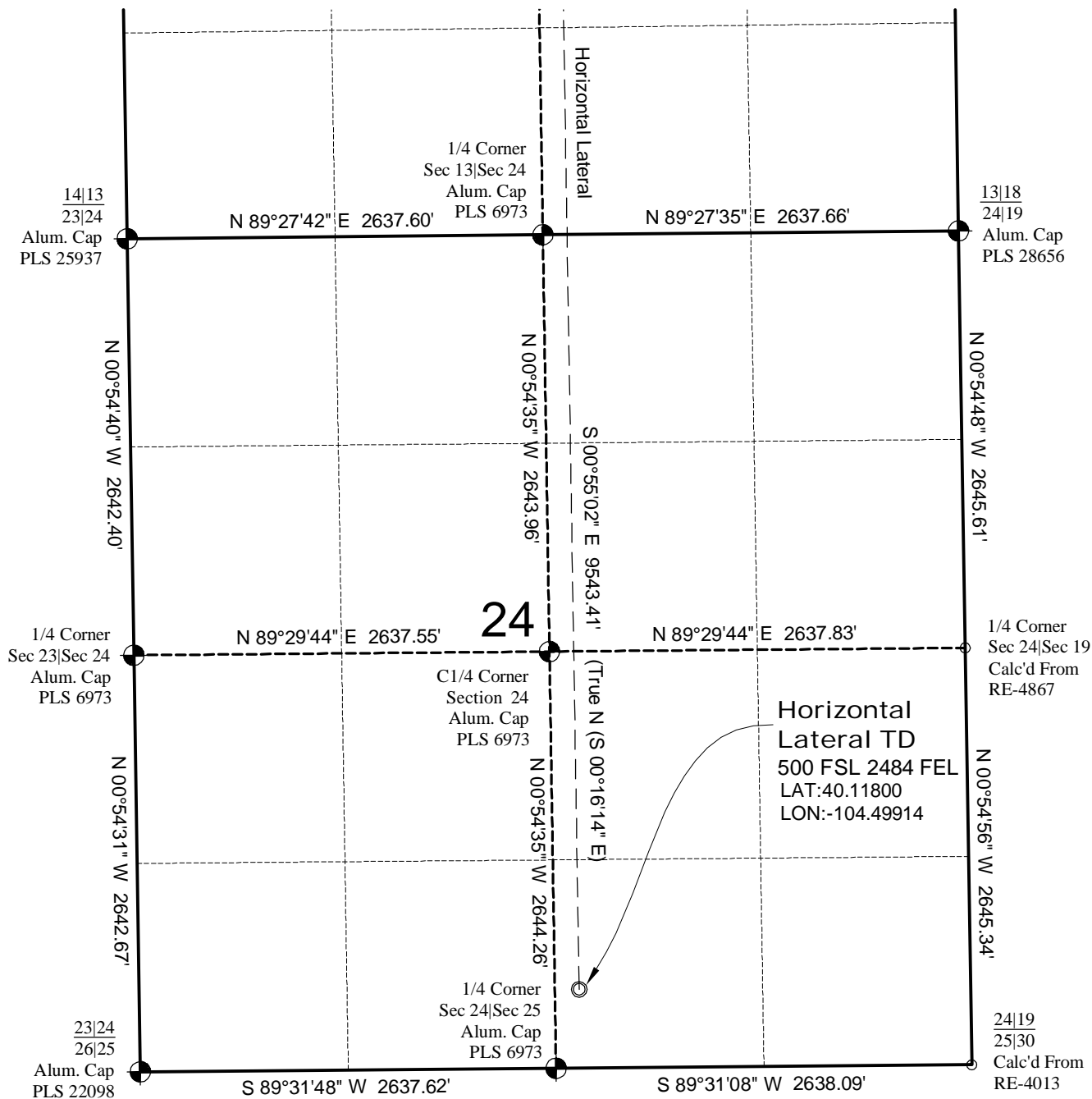
LAND SURVEYING AND MAPPING
LAFAYETTE - WINTER PARK
Ph 303 666 0379 Fx 303 665 6320

RED HAWK PETROLEUM LLC
L.E. GERKIN 9H

SL NW1/4 NE1/4 SEC.13 T2N R64W
HL TD SW1/4 SE1/4 SEC.24 T2N R64W
6th PM WELD COUNTY COLORADO

HORIZONTAL LATERAL TD MAP

L.E. GERKIN 9H PAD



GEO SURV

LAND SURVEYING AND MAPPING
LAFAYETTE - WINTER PARK
Ph 303 666 0379 Fx 303 665 6320

RED HAWK PETROLEUM LLC
L.E. GERKIN 9H

SL NW1/4 NE1/4 SEC.13 T2N R64W
HL TD SW1/4 SE1/4 SEC.24 T2N R64W
6th PM WELD COUNTY COLORADO