



July 14, 2016

Mr. Matt Lepore, Director  
Colorado Oil and Gas Conservation Commission  
1120 Lincoln Street, Suite 801  
Denver, Colorado 80203

**RE: COGCC Rule 318A.e.: Proposed Spacing Unit  
Johnson Trust 3 Well: NWSW, Section 13, Township 2 North, Range 68 West  
Weld County, Colorado**

Dear Mr. Lepore:

Extraction Oil and Gas, LLC (Extraction) has drilled the above referenced well in accordance with the provisions set out in Colorado Oil and Gas Conservation Commission (COGCC) Rule 318A.e. The well was drilled approximately 71' short of the proposed bottom hole, thus contracting the original wellbore spacing unit. Extraction's contracted Proposed Spacing Unit consists of:

E½SW¼ of Section 13, Township 2 North, Range 68 West  
E½NW¼ of Section 24, Township 2 North, Range 68 West  
Containing 160.00 acres, more or less

Extraction sent a courtesy notice to all the owners within the spacing unit as their right to object did not change. Copies of the required notification letters are on file at Extraction's office.

The Bottom Hole Location for this well changed from 2220' FNL, 2130' FWL, to: 2149' FNL, 2106' FWL, Section 24, T2N, R68W, 6<sup>th</sup> P.M.

Enclosed is the Proposed Spacing Unit Exhibit to assist in your review and approval of Extraction's Form 4 Sundry for the Johnson Trust 3 Well. Many thanks for your attention to this matter.

Respectfully,

A handwritten signature in blue ink, appearing to read "Jeff Annable", is written over a light blue circular stamp.

Jeff Annable  
Regulatory Analyst  
Agent for Extraction Oil & Gas, LLC

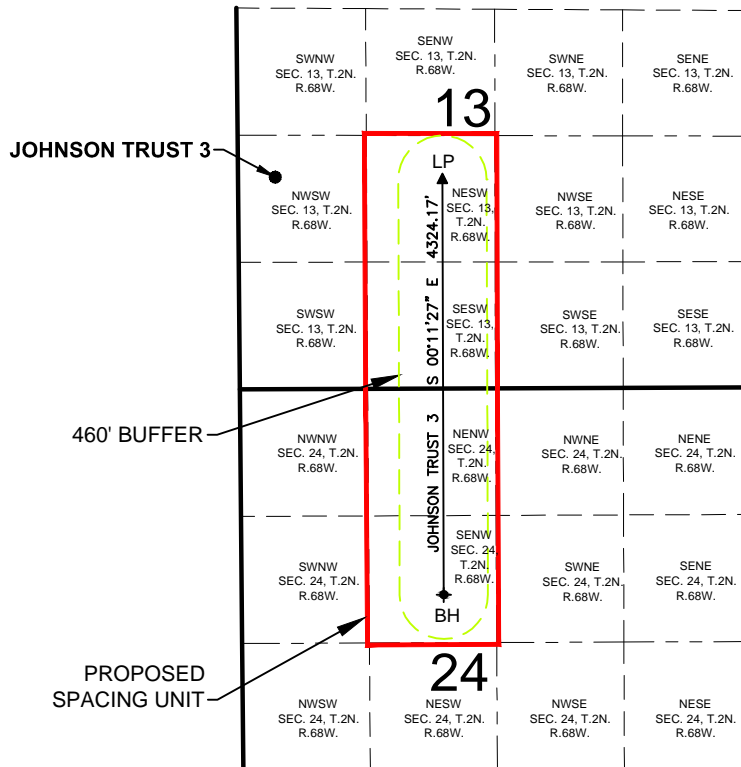
:ja

Enclosure: Proposed Spacing Unit Exhibit

# PROPOSED 318A.e. SPACING UNIT

SEC. 13: E2SW4

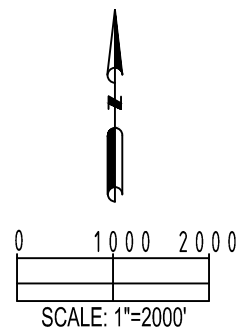
SEC. 24: E2NW4



WELL **JOHNSON TRUST 3** TO BE LOCATED 2209' FSL AND 389' FWL, SEC. 13, T2N, R68W

## LEGEND

- = PROPOSED WELL
- ▲ = LANDING POINT
- ◆ = BOTTOM HOLE
- LP = LANDING POINT
- BH = BOTTOM HOLE



<b>PREPARED BY:</b> <b>PFS</b> Petroleum Field Services, LLC 7535 Hilltop Circle Denver, CO 80221	<b>FIELD DATE:</b> 07-12-14	<b>SURFACE LOCATION:</b> NW 1/4 SW 1/4 SEC. 13, T2N, R68W, 6TH P.M. WELD COUNTY, COLORADO
	<b>DRAWING DATE:</b> 05-03-16	
<b>BY:</b> KAD	<b>CHECKED:</b> TJN	