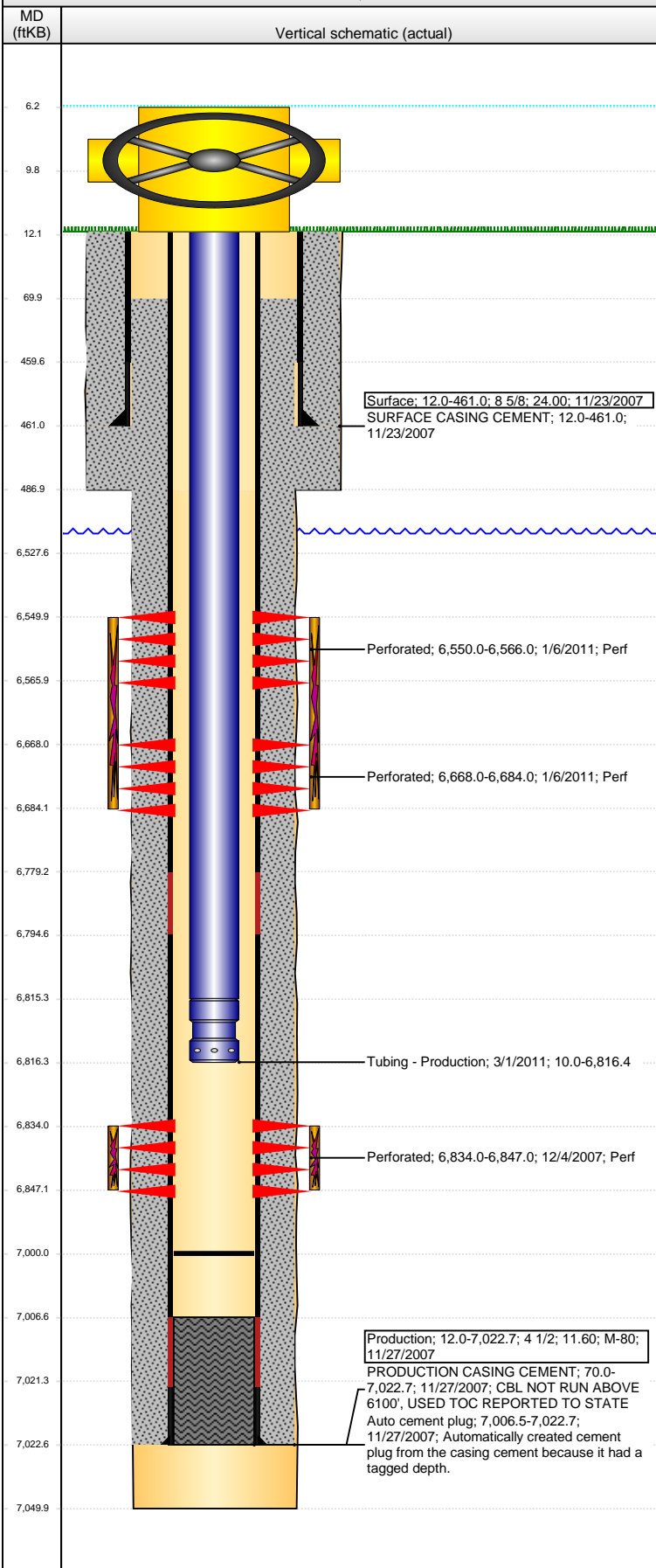


Well Name: FOSS 14-43

VERTICAL - ORIGINAL HOLE, 7/12/2016 2:24:10 PM



Well Header					
API	Business Unit	District	Well Config		
05-123-26500	DJ BASIN	15	VERTICAL		
Original KB Elevation (ft)	KB - GL / MSL (ftKB)	Spud Date	P & A Date		
4,687	12.00	11/23/2007			
Comment					
Directions To Well					
CR 57/HWY 392, E 0.5, N 0.1, E 0.1 INTO					
Congressional Location					
Quarter 1	Quarter 2	Quarter 3	Quarter 4		
		SW	SE		
Section	Township	Twnshp N...	Range		
14	6	N	64		
Rng E/W Dir					
W					
Bottom Hole Location					
North-South Distance (ft)	From N or S Line	East-West Distance (ft)	From E or W Line		
Plug Back Total Depths					
Date	Depth (ftKB)	Method	Com		
11/27/2007	7,006.5	CASING TALLY	GUIDE SHOE		
12/3/2007	7,040.0	CASED HOLE LOG	DEPTH LOGGER ON CBL		
1/5/2011	6,752.0	TAG	SAND PLUG		
3/1/2011	7,000.0	CASING TALLY	166' OF RAT HOLE		
Wellbore Sections					
Section Des	Size (in)	Act Top, MD (ftKB)	Act Btm, MD (ftKB)		
SURFACE	12 1/4	12	487		
PRODUCTION	7 7/8	487	7,050		
Zone Statuses					
Zone Name	Status Date	Status	Fluid Type	Job	Prod Method
CODELL	12/17/2007	PR		DRILLING/CO...	
CODELL	1/5/2011	SI		RECOMPLETI...	
CODELL	3/7/2011	PR		RECOMPLETI...	
NIOBRARA	1/25/2011	PR		RECOMPLETI...	
NIOBRARA	3/7/2011	PR		RECOMPLETI...	
Casing Strings					
Surface, 461.0ftKB					
Casing Description	Run Date	OD (in)	Wt/Len (l...)	Grade	Top, MD (ft...)
Surface	11/23/2007	8 5/8	24.00		12.0
MD (ftKB)					
461.0					
Production, 7,022.8ftKB					
Casing Description	Run Date	OD (in)	Wt/Len (l...)	Grade	Top, MD (ft...)
Production	11/27/2007	4 1/2	11.60	M-80	12.0
MD (ftKB)					
7,022.8					
Cement					
Description				Top Depth (ftKB)	Bottom Depth (ftKB)
SURFACE CASING CEMENT				12.0	461.0
Description				Top Depth (ftKB)	Bottom Depth (ftKB)
PRODUCTION CASING CEMENT				70.0	7,022.8
Tubing Strings					
Tubing Description	Run Date	String...	ID (in)	Wt (lb/ft)	Grade
Tubing - Production	3/7/2008	2 3/8			
Len (ft)					
6,806.00					
Set De...					
Tubing Description	Run Date	String...	ID (in)	Wt (lb/ft)	Grade
Tubing - Production	3/1/2011	2 3/8	1.995	4.70	J-55
Len (ft)					
6,806.35					
Set De...					
Tubing Components					
Item Des	OD (in)	Wt (lb/ft)	Grade	Jts	Len (ft)
Tubing	2 3/8	4.70	J-55	219	6,805.25
Notched Seating Nipple	2 3/8		J-55	1	1.10
Btm (ftKB)					
6,815.3					
Btm (TVD) (ftKB)					
Perforation Data					
Zone	Bnch/St g	Entered Shot Total	Top (ftKB)	Btm (ftKB)	Date
NIOBRARA, ORIGINAL HOLE	A	32	6,550.00	6,566.00	1/6/2011
NIOBRARA, ORIGINAL HOLE	B	32	6,668.00	6,684.00	1/6/2011
CODELL, ORIGINAL HOLE		52	6,834.00	6,847.00	12/4/2007
Stimulations & Treatments					
Date	Zone	Primary Job Type			
12/5/2007	CODELL, ORIGINAL HOLE	DRILLING/COMPLETION - ORIGINAL			
Technical Result	Tech Result Details			Tech Result Note	
Comment					

Well Name: FOSS 14-43

VERTICAL - ORIGINAL HOLE, 7/12/2016 2:24:13 PM

Stimulations & Treatments

Date	Zone	Primary Job Type
1/21/2011	NIORARA, ORIGINAL HOLE	RECOMPLETION
Technical Result	Tech Result Details	Tech Result Note
Success	According to Plan	

Comment
 (NIO): PUT MANUAL GAUGE ON SURFACE VALVE, THIS IS AN OLD PETRO CANADA WELL AND SURFACE VALVE WAS NOT CHANGED BY WORKOVER CREW. WE HAD A 1" BALL VALVE COMING UP AT US. TREATMENT WENT WELL, NO ISSUES TO REPORT. CUT 67 BBLS OFF OF SLICKWATER PAD STAGE, TANKS WERE LEANING. AVG VISC 23.2 CPS, AVG TEMP 65F, AVG PH 10.21, AVG PRESS 4230 PSI, AVG RATE 51.5 BPM.

Other In Hole

Run Date	Des	OD (in)	Top (ftKB)	Btm (ftKB)

Logs

Date	Type	Top, MD (ftKB)	Btm, MD (ftKB)
11/26/2007	COMPENSATED DENSITY	3,500.0	7,040.0
11/26/2007	INDUCTION	473.0	7,040.0
12/3/2007	CBL/CCL/GR	6,100.0	7,040.0
4/15/2015	GYRO	12.0	6,800.0

