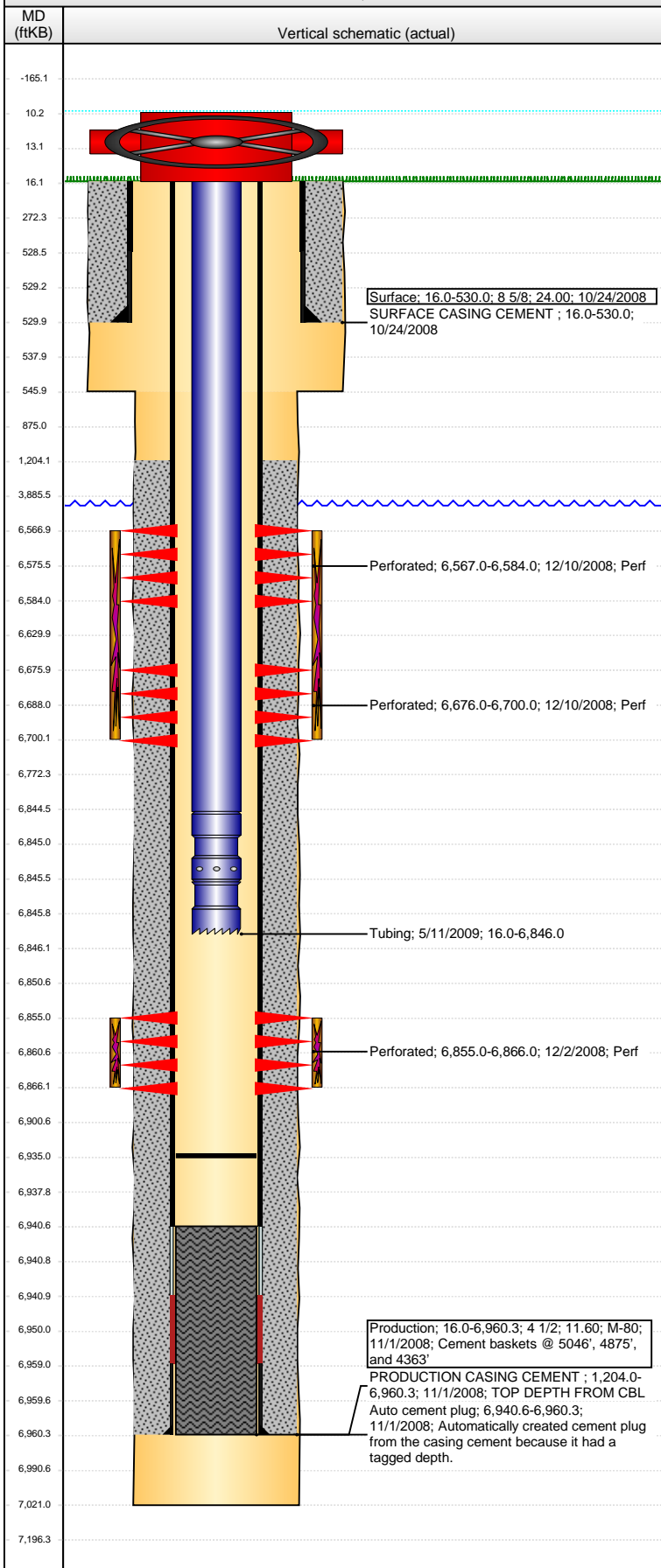


Well Name: FOSS 14-41

VERTICAL - ORIGINAL HOLE, 7/12/2016 2:26:36 PM



Well Header

API	Business Unit	District	Well Config
05-123-26498	DJ BASIN	15	VERTICAL
Original KB Elevation (ft)	KB - GL / MSL (ftKB)	Spud Date	P & A Date
4,695	16.00	10/23/2008	
Comment			

Directions To Well

59/392, north 3/10, west at battery 1/10, south 150' into

Congressional Location

Quarter 1	Quarter 2	Quarter 3	Quarter 4	Section	Township	Twnshp N...	Range	Rng E/W Dir
		NE	SE	14	6	N	64	W

Bottom Hole Location

North-South Distance (ft)	From N or S Line	East-West Distance (ft)	From E or W Line

Plug Back Total Depths

Date	Depth (ftKB)	Method	Com
11/1/2008	6,940.6	TAG	SHOE W/ BAFFLE PLATE
11/24/2008	6,919.0	CASED HOLE LOG	DEPTH LOGGER FROM CBL
5/11/2009	6,935.0	TAG	CLEAN OUT & LAND TBG

Wellbore Sections

Section Des	Size (in)	Act Top, MD (ftKB)	Act Btm, MD (ftKB)
SURFACE	12 1/4	16	546
PRODUCTION	7 7/8	546	7,021

Zone Statuses

Zone Name	Status Date	Status	Fluid Type	Job	Prod Method
CODELL	12/10/2008	PR		DRILLING/CO...	
CODELL	3/18/2015	SI		HORIZONTAL...	
NIOBRARA	12/10/2008	PR		DRILLING/CO...	
NIOBRARA	3/18/2015	SI		HORIZONTAL...	

Casing Strings

Surface, 530.0ftKB

Casing Description	Run Date	OD (in)	Wt/Len (l...)	Grade	Top, MD (ft...)	MD (ftKB)
Surface	10/24/2008	8 5/8	24.00		16.0	530.0

Production, 6,960.3ftKB

Casing Description	Run Date	OD (in)	Wt/Len (l...)	Grade	Top, MD (ft...)	MD (ftKB)
Production	11/1/2008	4 1/2	11.60	M-80	16.0	6,960.3

Cement

Description	Top Depth (ftKB)	Bottom Depth (ftKB)
SURFACE CASING CEMENT	16.0	530.0
Description	Top Depth (ftKB)	Bottom Depth (ftKB)
PRODUCTION CASING CEMENT	1,204.0	6,960.3

Tubing Strings

Tubing Description	Run Date	String...	ID (in)	Wt (lb/ft)	Grade	Len (ft)	Set De...
Tubing	5/11/2009	2 3/8				6,830.00	

Tubing Components

Item Des	OD (in)	Wt (lb/ft)	Grade	Jts	Len (ft)	Btm (ftKB)	Btm (TVD) (ftKB)
Tubing	2 3/8			211	6,828.50	6,844.5	
Pump Seating Nipple	2 3/8	1.10			1.00	6,845.5	
Notched collar	2 3/8				0.50	6,846.0	

Perforation Data

Zone	Bnch/St g	Entered Shot Total	Top (ftKB)	Btm (ftKB)	Date
NIOBRARA, ORIGINAL HOLE	A	34	6,567.00	6,584.00	12/10/2008
NIOBRARA, ORIGINAL HOLE	B	96	6,676.00	6,700.00	12/10/2008
CODELL, ORIGINAL HOLE		44	6,855.00	6,866.00	12/2/2008

Stimulations & Treatments

Date	Zone	Primary Job Type
12/10/2008	CODELL, ORIGINAL HOLE	DRILLING/COMPLETION - ORIGINAL
Technical Result	Tech Result Details	Tech Result Note

Comment

Well Name: FOSS 14-41

VERTICAL - ORIGINAL HOLE, 7/12/2016 2:26:38 PM

Stimulations & Treatments

Date 12/10/2008	Zone NIOBRARA, ORIGINAL HOLE	Primary Job Type DRILLING/COMPLETION - ORIGINAL
Technical Result	Tech Result Details	Tech Result Note

Comment

Other In Hole

Run Date	Des	OD (in)	Top (ftKB)	Btm (ftKB)

Logs

Date	Type	Top, MD (ftKB)	Btm, MD (ftKB)
10/31/2008	COMPENSATED DENSITY	3,450.0	6,982.0
10/31/2008	INDUCTION	530.0	7,002.0
11/24/2008	CBL/CCL/GR	16.0	6,918.0
4/15/2015	GYRO	16.0	6,750.0

