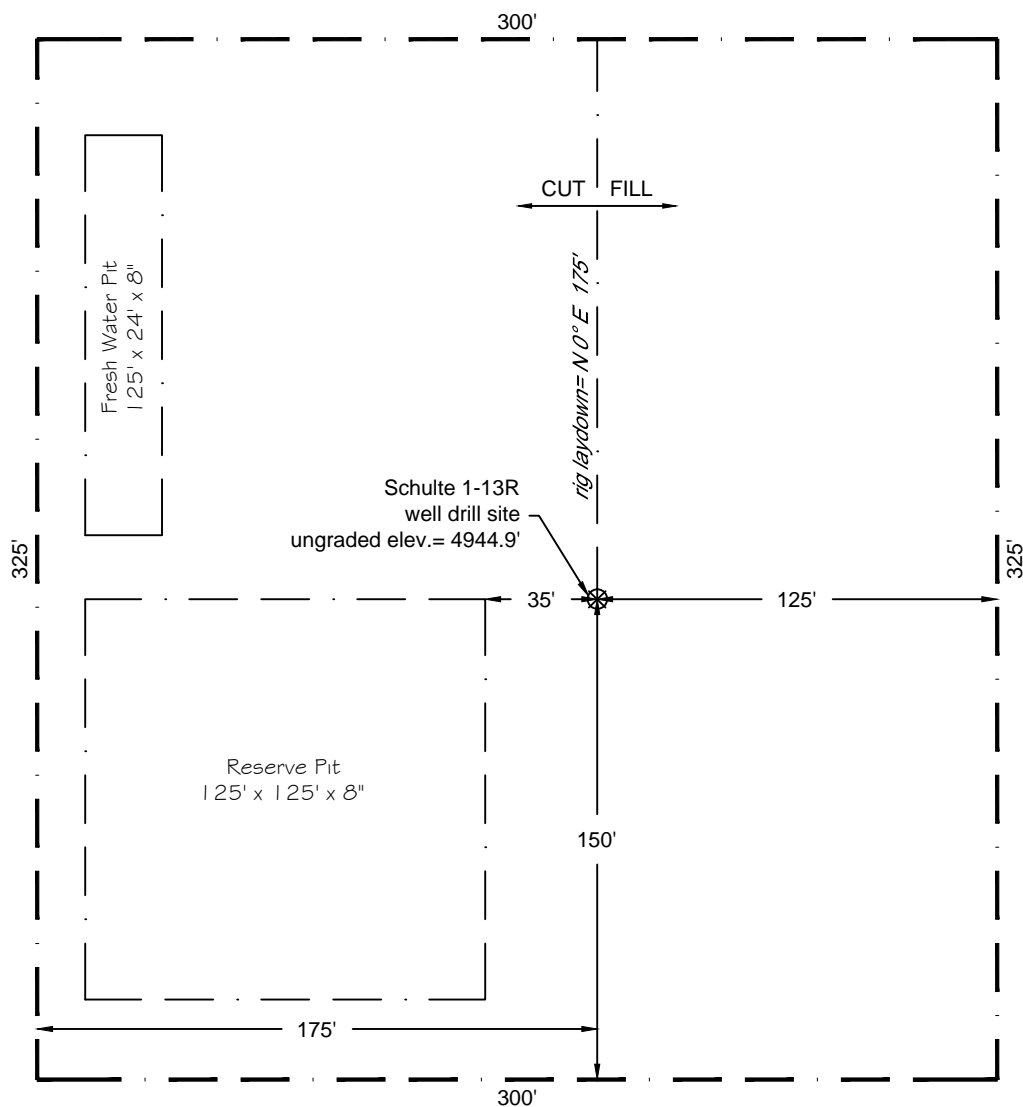


Layout Diagram



Z:\PLS Group\Project\2016\16009\dwg\16009.dwg April 15, 2016 - 1:32pm

Well Name: Schulte 1-13R	Field Date n/a	Prepared for: Grynberg Petroleum Company PLS Group 6843 North Franklin Avenue Loveland, Colorado 80538 970.669.2100 office - 970.669.3652 fax
Section 3-T6S-R52W-6th PM, SW-SW	Party Chief n/a	
Lincoln County, Colorado	Proj. Manager MBS Drawing Date 3/13/2016	