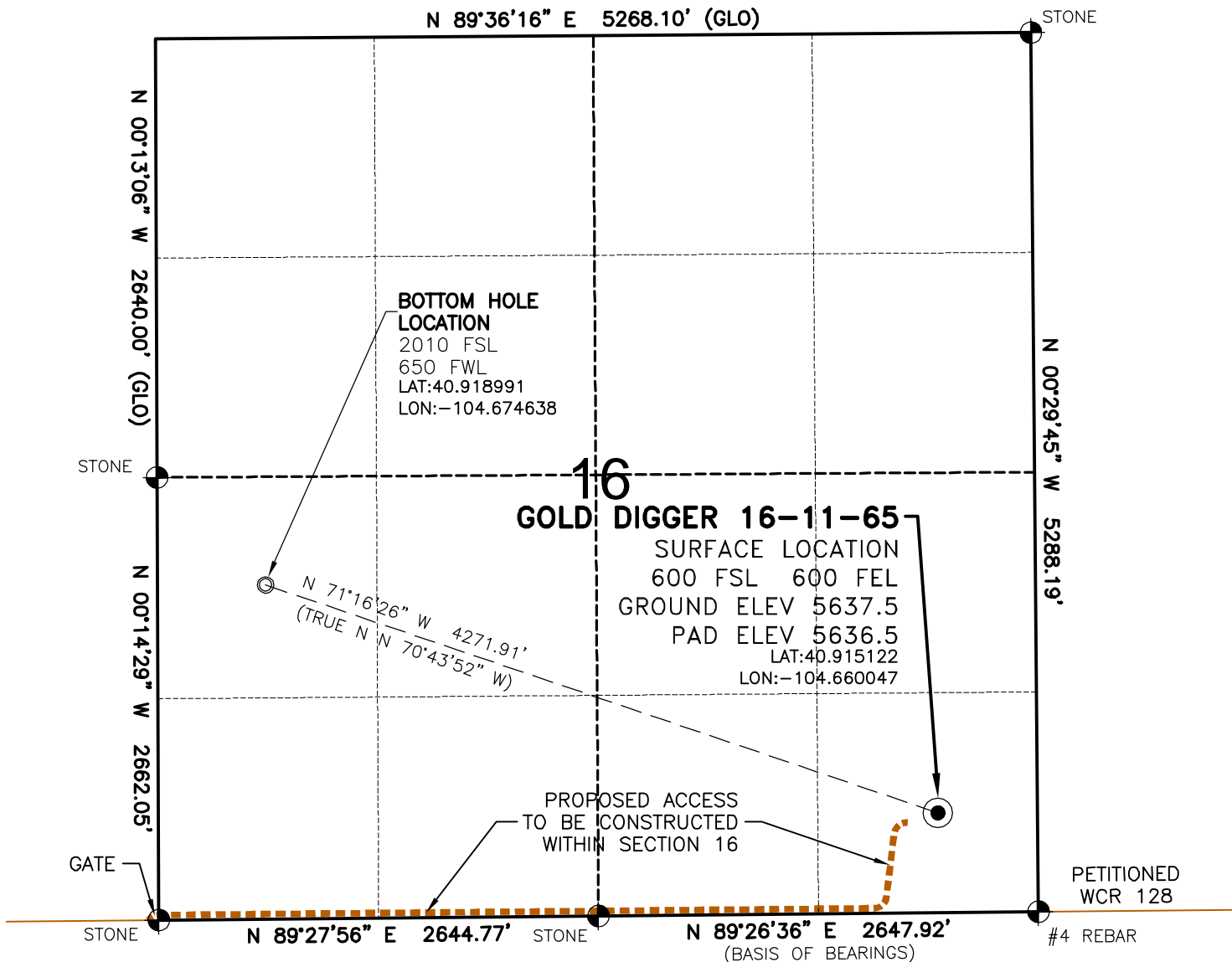


WELL LOCATION MAP

GOLD DIGGER 16-11-65 PAD



SURVEYOR'S STATEMENT

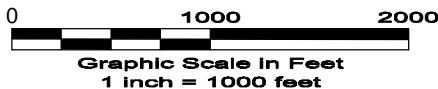
The undersigned hereby states that the well location shown hereon was staked on the ground based on existing monumentation and/or physical evidence found in the field and is correct to the best of my knowledge, information and belief.

NOTES

- 1.) Horizontal coordinates based on NGS control point "PORTER" and vertical datum based on NGS control point "A 310" with an elevation of 5253.35. NAVD 1988.
- 2.) All directions, distances, and dimensions shown hereon are based on coordinates from the "Colorado coordinate system of 1983 north zone" (article 52 of title 38, C.R.S.).
- 3.) All section line dimensions shown hereon are based on field measurements of existing monuments and/or physical evidence found in the field unless otherwise indicated. Refer to land survey plats deposited in Weld County.
- 4.) Physical features shown hereon are for graphical representation only.
- 5.) See Form 2A for visible improvements within 400' of wellhead.
- 6.) Distances to nearest section lines are measured perpendicularly.
- 7.) This is not a land survey nor land survey plat.
- 8.) Date of Survey 9/24/10; Date of Drawing 9/28/10. REV 0

PDOP Reading: 2.4 Instrument Operator: GEORGE ALLEN

9/28/10



GEO SURV

LAND SURVEYING AND MAPPING
LAFAYETTE - WINTER PARK
Ph 303 666 0379 Fx 303 665 6320

SLAWSON EXPLORATION CO., INC.
GOLD DIGGER 16-11-65 PAD

SL SE1/4 SE1/4 SEC. 16 T11N R65W
BL NW1/4 SW1/4 SEC. 16 T11N R65W
6th PM WELD COUNTY COLORADO