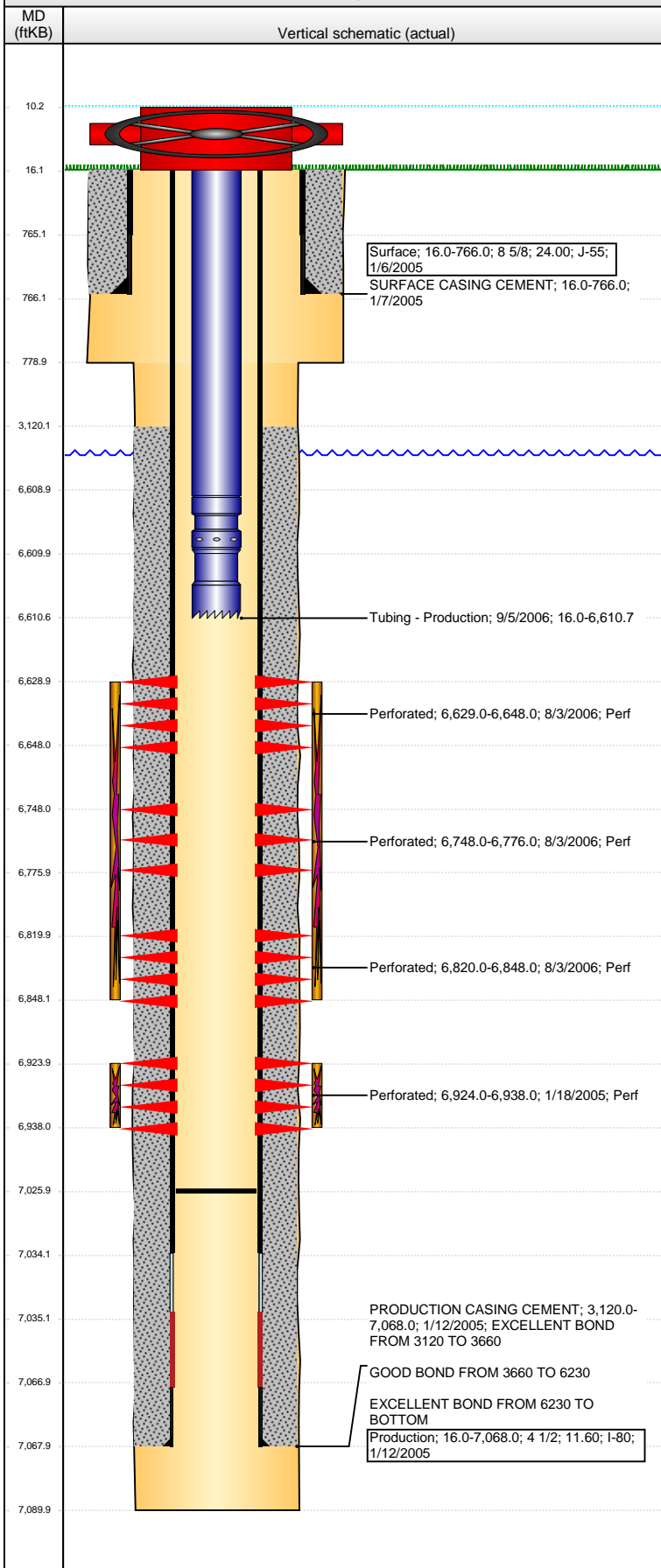


**Well Name: RHINIE 15-29**

VERTICAL - ORIGINAL HOLE, 7/11/2016 11:16:54 AM



Well Header			
API	Business Unit	District	Well Config
05-123-22606	DJ BASIN	15	VERTICAL
Original KB Elevation (ft)	KB - GL / MSL (ftKB)	Spud Date	P & A Date
4,676	16.00	1/6/2005	
Comment			
NO RECENT C/O OR TAG FILL INFO AVAILABLE			
Directions To Well			
Congressional Location			
Quarter 1	Quarter 2	Quarter 3	Quarter 4
		SW	SE
Section	Township	Twnshp N...	Range
29	6 N		64 W
Bottom Hole Location			
North-South Distance (ft)	From N or S Line	East-West Distance (ft)	From E or W Line
Plug Back Total Depths			
Date	Depth (ftKB)	Method	Com
1/12/2005	7,034.0	CASING TALLY	TOP OF FLOAT COLLAR
1/18/2005	7,026.0	CASED HOLE LOG	CBL DEPTH LOGGER
Wellbore Sections			
Section Des	Size (in)	Act Top, MD (ftKB)	Act Btm, MD (ftKB)
SURFACE	12 1/4	16	779
PRODUCTION	7 7/8	779	7,090
Zone Statuses			
Zone Name	Status Date	Status	Fluid Type
CODELL	2/8/2005	PR	
NIOBRARA	8/7/2006	PR	
Casing Strings			
Surface, 766.0ftKB			
Casing Description	Run Date	OD (in)	Wt/Len (l...)
Surface	1/6/2005	8 5/8	24.00
Production, 7,068.0ftKB			
Casing Description	Run Date	OD (in)	Wt/Len (l...)
Production	1/12/2005	4 1/2	11.60
Cement			
Description	Top Depth (ftKB)	Bottom Depth (ftKB)	
SURFACE CASING CEMENT	16.0	766.0	
Description	Top Depth (ftKB)	Bottom Depth (ftKB)	
PRODUCTION CASING CEMENT	3,120.0	7,068.0	
Tubing Strings			
Tubing Description	Run Date	String...	ID (in)
Tubing - Production	9/5/2006	2 3/8	1.995
Tubing Components			
Item Des	OD (in)	Wt (lb/ft)	Grade
EUE 8rd Tubing	2 3/8	4.70	J-55
Seal Nipple	2 3/8		1
Notched collar	2 3/8		1
Perforation Data			
Zone	Bnch/St g	Entered Shot Total	Top (ftKB)
NIOBRARA, ORIGINAL HOLE	A	122	6,629.00
NIOBRARA, ORIGINAL HOLE	B	122	6,748.00
NIOBRARA, ORIGINAL HOLE	C	122	6,820.00
CODELL, ORIGINAL HOLE		56	6,924.00
Stimulations & Treatments			
Date	Zone	Primary Job Type	
1/20/2005	CODELL, ORIGINAL HOLE	DRILLING/COMPLETION - ORIGINAL	
Technical Result	Tech Result Details	Tech Result Note	
Comment			
Date	Zone	Primary Job Type	
8/4/2006	NIOBRARA, ORIGINAL HOLE	RECOMPLETION	
Technical Result	Tech Result Details	Tech Result Note	
Comment			

**Well Name: RHINIE 15-29**

VERTICAL - ORIGINAL HOLE, 7/11/2016 11:16:57 AM

## Other In Hole

Run Date	Des	OD (in)	Top (ftKB)	Btm (ftKB)

## Logs

Date	Type	Top, MD (ftKB)	Btm, MD (ftKB)
1/12/2005	CEMENT VOLUME	763.0	7,076.0
1/12/2005	COMPENSATED NEUTRON	3,550.0	7,066.0
1/12/2005	INDUCTION	763.0	7,076.0
1/12/2005	MICRO LOG	763.0	7,066.0
1/18/2005	CBL/CCL/GR	3,012.0	7,022.0

