

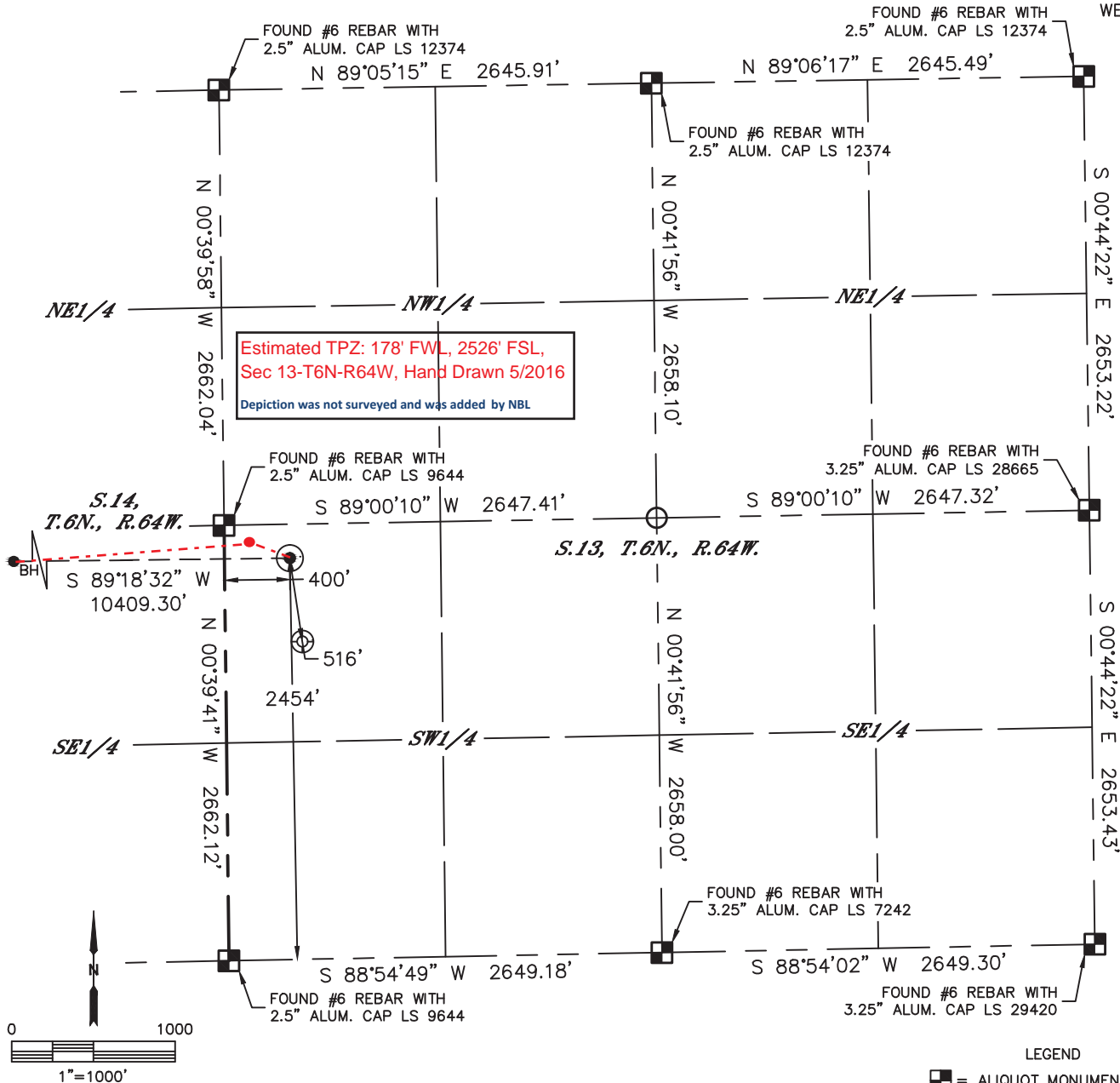


Lat40°, Inc. 6250 W. 10th Street, Unit 2, Greeley, CO 970-515-5294

WELL LOCATION CERTIFICATE

LAPP A15-648

SECTION: 13
TOWNSHIP: 6N
RANGE: 64W
6TH. P.M.
WELD COUNTY, CO



| | | | | | | | |
|--|----------|------------|----------|-------------------------|-------------|----------------------|--|
| CLIENT: NOBLE ENERGY, INC. | | | | LANDMAN: NATE MCCORKELL | | | |
| INSTRUMENT OPERATOR: BRIAN ROTTINGHAUS | | | | SURVEY DATE: 8/20/2015 | | SURFACE USE: PASTURE | |
| SHL FOOTAGE | SHL LAT° | SHL LONG° | SHL PDOP | SHL ELEV | SHL 1/4/1/4 | SHL S-T-R | |
| 2454 FSL 400 FWL | 40.48567 | -104.50639 | 1.9 | 4668 | NWSW | 13-6-64 | |

| | | | |
|------------------|----------|------------|-----------|
| BHL FOOTAGE | BHL LAT° | BHL LONG° | BHL S-T-R |
| 2525 FSL 535 FWL | 40.48564 | -104.54380 | 15-6-64 |

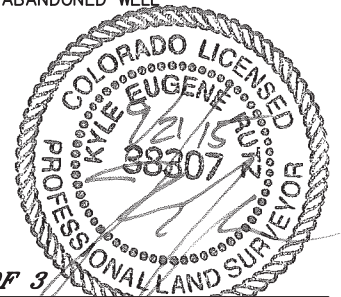
| | |
|--------------------------------------|-----------|
| NEAREST EXISTING WELL IN SHL 1/4/1/4 | |
| EX. LAPP 13-32 | ±516' SE |
| NEAREST CULTURAL ITEMS | |
| BUILDING | ±1314' NW |
| BUILDING UNIT | ±1328' NW |
| HIGH OCCUPANCY BUILDING UNIT | 5280' + |
| DESIGNATED OUTSIDE ACTIVITY AREA | 5280' + |
| PUBLIC ROAD (COUNTY ROAD 59) | ±391' W |
| ABOVE GROUND UTILITY | ±1490' NW |
| RAILROAD | 5280' + |
| PROPERTY LINE | ±360' S |

NOTE:

- 1) Bearings shown are Grid Bearings of the Colorado State Plane Coordinate System, North Zone, North American Datum 1983. The lineal dimensions as contained herein are based upon the "U.S. Survey Foot."
- 2) Distances to section lines measured at 90 degrees from said section lines.
- 3) Ground elevations are based on an observed GPS elevation (NAVD 1988 DATUM).
- 4) Latitude and Longitude shown are (NAD 83 DATUM).
- 5) IMPROVEMENTS: See LOCATION DRAWING for all visible improvements within 500' of oil and gas location.
- 6) This map does not represent a boundary survey.

LEGEND

- = ALIQUOT MONUMENT AS DESCRIBED
- = CALCULATED POSITION
- = SURFACE HOLE LOCATION (SHL)
- ▲ = ENTRY POINT LOCATION (EP)
- BH = BOTTOM HOLE LOCATION (BHL)
- ⊕ = EXISTING WELL
- ⊙ = ABANDONED WELL



SHEET 1 OF 3

Kyle E. Rutz—On behalf of Lat40°, Inc.
Colorado Licensed Professional Land Surveyor No. 38307
DATE: 9/21/2015
PROJECT#: 2015052

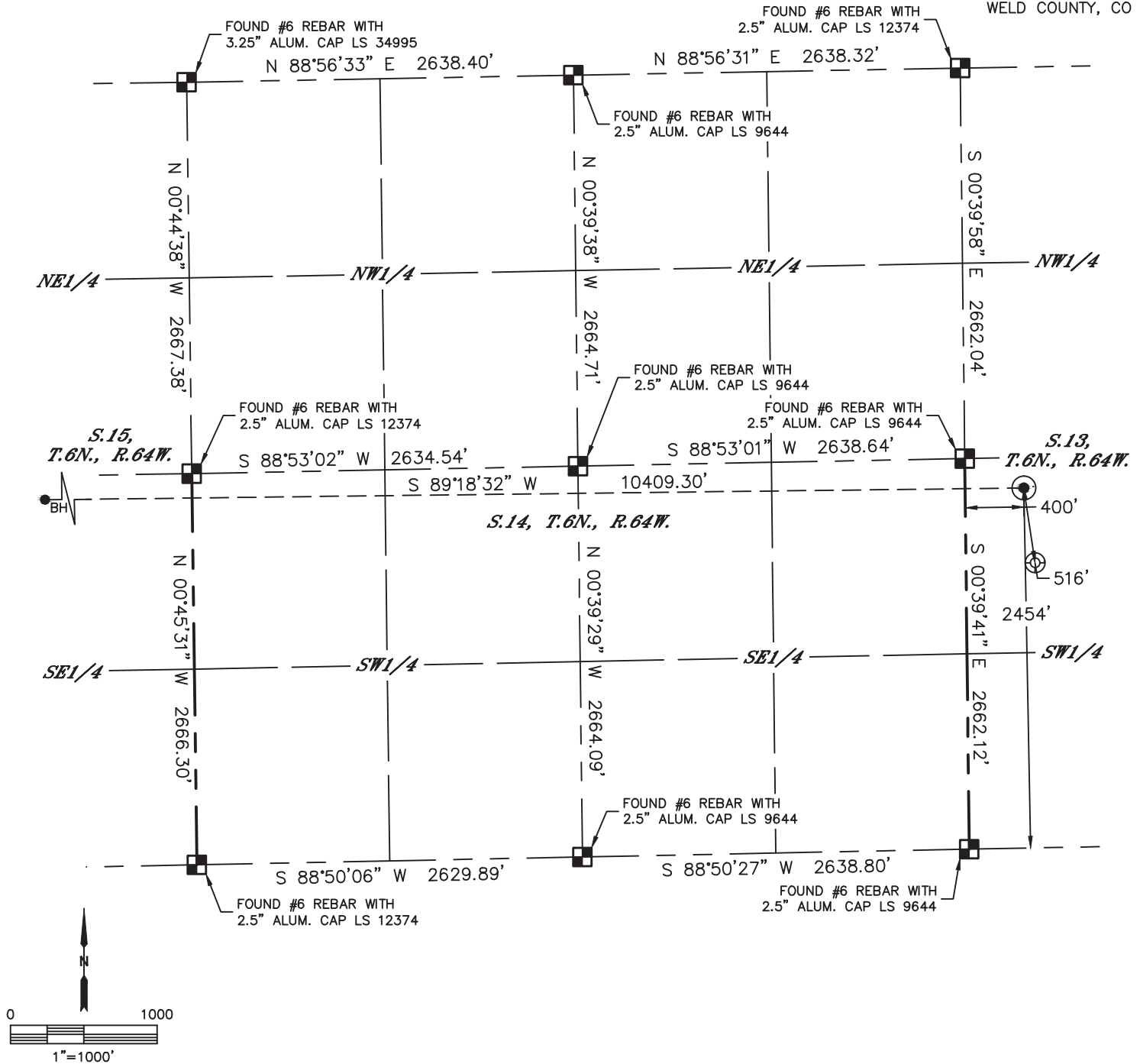


Lat40°, Inc. 6250 W. 10th Street, Unit 2, Greeley, CO 970-515-5294

WELL LOCATION CERTIFICATE

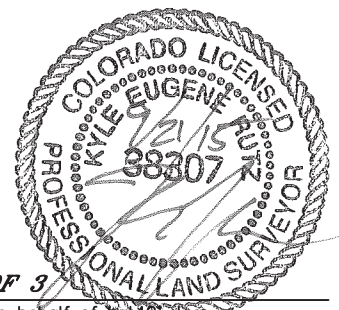
LAPP A15-648

SECTION: 13
TOWNSHIP: 6N
RANGE: 64W
6TH. P.M.
WELD COUNTY, CO



LEGEND

- = ALIQUOT MONUMENT AS DESCRIBED
- = CALCULATED POSITION
- = SURFACE HOLE LOCATION (SHL)
- ▲ = ENTRY POINT LOCATION (EP)
- _{BH} = BOTTOM HOLE LOCATION (BHL)
- ⊙ = EXISTING WELL
- ⊙ = ABANDONED WELL



SHEET 2 OF 3

Kyle E. Rutz—On behalf of Lat40°, Inc.
Colorado Licensed Professional Land Surveyor No. 38307
DATE: 9/21/2015
PROJECT#: 2015052

Kyle E. Rutz—On behalf of L&L, Inc.
Colorado Licensed Professional Land Surveyor No. 38307
DATE: 9/21/2015
PROJECT#: 2015052