

SandRidge Energy

North Park Basin

T7N-R80W-S16

Evans 0780 7-21H

Wellbore #1

Plan: Design #1

Standard Survey Report

08 July, 2016

SandRidge Energy

Survey Report

Company:	SandRidge Energy	Local Co-ordinate Reference:	Well Evans 0780 7-21H
Project:	North Park Basin	TVD Reference:	KB @ 8152.0usft
Site:	T7N-R80W-S16	MD Reference:	KB @ 8152.0usft
Well:	Evans 0780 7-21H	North Reference:	Grid
Wellbore:	Wellbore #1	Survey Calculation Method:	Minimum Curvature
Design:	Design #1	Database:	EDMProd

Project	North Park Basin		
Map System:	US State Plane 1983	System Datum:	Mean Sea Level
Geo Datum:	North American Datum 1983		
Map Zone:	Colorado Northern Zone		

Site		T7N-R80W-S16			
Site Position:		Northing:	1,453,179.12 usft	Latitude:	40° 34' 26.505 N
From:	Map	Easting:	2,754,928.85 usft	Longitude:	106° 22' 55.973 W
Position Uncertainty:	0.0 usft	Slot Radius:	13-3/16 "	Grid Convergence:	-0.57 °

Well	Evans 0780 7-21H					
Well Position	+N/-S	0.0 usft	Northing:	1,453,209.12 usft	Latitude:	40° 34' 26.802 N
	+E/-W	0.0 usft	Easting:	2,754,928.85 usft	Longitude:	106° 22' 55.977 W
Position Uncertainty		0.0 usft	Wellhead Elevation:	0.0 usft	Ground Level:	8,136.0 usft

Wellbore	Wellbore #1				
Magnetics	Model Name	Sample Date	Declination (°)	Dip Angle (°)	Field Strength (nT)
	IGRF200510	12/31/2009	9.88	66.97	53,186

Design	Design #1					
Audit Notes:						
Version:	Phase:	PROTOTYPE			Tie On Depth:	0.0
Vertical Section:	Depth From (TVD) (usft)	+N/-S (usft)	+E/-W (usft)	Direction (°)		
	0.0	0.0	0.0	186.77		

Survey Tool Program	Date	7/8/2016			
From (usft)	To (usft)	Survey (Wellbore)	Tool Name	Description	
0.0	14,606.3	Design #1 (Wellbore #1)	Sperry MWD	Fixed:v2:standard declination	

Planned Survey										
Measured Depth (usft)	Inclination (°)	Azimuth (°)	Vertical Depth (usft)	+N/-S (usft)	+E/-W (usft)	Vertical Section (usft)	Dogleg Rate (°/100usft)	Build Rate (°/100usft)	Turn Rate (°/100usft)	
0.0	0.00	0.00	0.0	0.0	0.0	0.0	0.00	0.00	0.00	
100.0	0.00	0.00	100.0	0.0	0.0	0.0	0.00	0.00	0.00	
200.0	0.00	0.00	200.0	0.0	0.0	0.0	0.00	0.00	0.00	
300.0	0.00	0.00	300.0	0.0	0.0	0.0	0.00	0.00	0.00	
400.0	0.00	0.00	400.0	0.0	0.0	0.0	0.00	0.00	0.00	
500.0	0.00	0.00	500.0	0.0	0.0	0.0	0.00	0.00	0.00	
600.0	0.00	0.00	600.0	0.0	0.0	0.0	0.00	0.00	0.00	
700.0	0.00	0.00	700.0	0.0	0.0	0.0	0.00	0.00	0.00	
800.0	0.00	0.00	800.0	0.0	0.0	0.0	0.00	0.00	0.00	
900.0	0.00	0.00	900.0	0.0	0.0	0.0	0.00	0.00	0.00	

SandRidge Energy

Survey Report

Company:	SandRidge Energy	Local Co-ordinate Reference:	Well Evans 0780 7-21H
Project:	North Park Basin	TVD Reference:	KB @ 8152.0usft
Site:	T7N-R80W-S16	MD Reference:	KB @ 8152.0usft
Well:	Evans 0780 7-21H	North Reference:	Grid
Wellbore:	Wellbore #1	Survey Calculation Method:	Minimum Curvature
Design:	Design #1	Database:	EDMProd

Planned Survey

Measured Depth (usft)	Inclination (°)	Azimuth (°)	Vertical Depth (usft)	+N/-S (usft)	+E/-W (usft)	Vertical Section (usft)	Dogleg Rate (°/100usft)	Build Rate (°/100usft)	Turn Rate (°/100usft)
1,000.0	0.00	0.00	1,000.0	0.0	0.0	0.0	0.00	0.00	0.00
1,100.0	0.00	0.00	1,100.0	0.0	0.0	0.0	0.00	0.00	0.00
1,200.0	0.00	0.00	1,200.0	0.0	0.0	0.0	0.00	0.00	0.00
1,300.0	0.00	0.00	1,300.0	0.0	0.0	0.0	0.00	0.00	0.00
1,400.0	0.00	0.00	1,400.0	0.0	0.0	0.0	0.00	0.00	0.00
1,500.0	0.00	0.00	1,500.0	0.0	0.0	0.0	0.00	0.00	0.00
1,600.0	0.00	0.00	1,600.0	0.0	0.0	0.0	0.00	0.00	0.00
1,700.0	0.00	0.00	1,700.0	0.0	0.0	0.0	0.00	0.00	0.00
1,800.0	0.00	0.00	1,800.0	0.0	0.0	0.0	0.00	0.00	0.00
1,900.0	0.00	0.00	1,900.0	0.0	0.0	0.0	0.00	0.00	0.00
2,000.0	0.00	0.00	2,000.0	0.0	0.0	0.0	0.00	0.00	0.00
2,100.0	0.00	0.00	2,100.0	0.0	0.0	0.0	0.00	0.00	0.00
2,200.0	0.00	0.00	2,200.0	0.0	0.0	0.0	0.00	0.00	0.00
2,300.0	0.00	0.00	2,300.0	0.0	0.0	0.0	0.00	0.00	0.00
2,400.0	0.00	0.00	2,400.0	0.0	0.0	0.0	0.00	0.00	0.00
2,500.0	0.00	0.00	2,500.0	0.0	0.0	0.0	0.00	0.00	0.00
2,600.0	0.00	0.00	2,600.0	0.0	0.0	0.0	0.00	0.00	0.00
2,700.0	0.00	0.00	2,700.0	0.0	0.0	0.0	0.00	0.00	0.00
2,800.0	0.00	0.00	2,800.0	0.0	0.0	0.0	0.00	0.00	0.00
2,900.0	0.00	0.00	2,900.0	0.0	0.0	0.0	0.00	0.00	0.00
3,000.0	0.00	0.00	3,000.0	0.0	0.0	0.0	0.00	0.00	0.00
3,100.0	0.00	0.00	3,100.0	0.0	0.0	0.0	0.00	0.00	0.00
3,200.0	0.00	0.00	3,200.0	0.0	0.0	0.0	0.00	0.00	0.00
3,300.0	0.00	0.00	3,300.0	0.0	0.0	0.0	0.00	0.00	0.00
3,400.0	0.00	0.00	3,400.0	0.0	0.0	0.0	0.00	0.00	0.00
3,500.0	0.00	0.00	3,500.0	0.0	0.0	0.0	0.00	0.00	0.00
3,600.0	0.00	0.00	3,600.0	0.0	0.0	0.0	0.00	0.00	0.00
3,700.0	0.00	0.00	3,700.0	0.0	0.0	0.0	0.00	0.00	0.00
3,800.0	0.00	0.00	3,800.0	0.0	0.0	0.0	0.00	0.00	0.00
3,900.0	0.00	0.00	3,900.0	0.0	0.0	0.0	0.00	0.00	0.00
4,000.0	0.00	0.00	4,000.0	0.0	0.0	0.0	0.00	0.00	0.00
4,100.0	0.00	0.00	4,100.0	0.0	0.0	0.0	0.00	0.00	0.00
4,200.0	0.00	0.00	4,200.0	0.0	0.0	0.0	0.00	0.00	0.00
4,300.0	0.00	0.00	4,300.0	0.0	0.0	0.0	0.00	0.00	0.00
4,400.0	0.00	0.00	4,400.0	0.0	0.0	0.0	0.00	0.00	0.00
4,500.0	0.00	0.00	4,500.0	0.0	0.0	0.0	0.00	0.00	0.00
4,600.0	0.00	0.00	4,600.0	0.0	0.0	0.0	0.00	0.00	0.00
4,700.0	0.00	0.00	4,700.0	0.0	0.0	0.0	0.00	0.00	0.00
4,800.0	0.00	0.00	4,800.0	0.0	0.0	0.0	0.00	0.00	0.00
4,900.0	0.00	0.00	4,900.0	0.0	0.0	0.0	0.00	0.00	0.00
5,000.0	0.00	0.00	5,000.0	0.0	0.0	0.0	0.00	0.00	0.00
5,100.0	0.00	0.00	5,100.0	0.0	0.0	0.0	0.00	0.00	0.00
5,200.0	0.00	0.00	5,200.0	0.0	0.0	0.0	0.00	0.00	0.00
5,300.0	0.00	0.00	5,300.0	0.0	0.0	0.0	0.00	0.00	0.00

SandRidge Energy

Survey Report

Company:	SandRidge Energy	Local Co-ordinate Reference:	Well Evans 0780 7-21H
Project:	North Park Basin	TVD Reference:	KB @ 8152.0usft
Site:	T7N-R80W-S16	MD Reference:	KB @ 8152.0usft
Well:	Evans 0780 7-21H	North Reference:	Grid
Wellbore:	Wellbore #1	Survey Calculation Method:	Minimum Curvature
Design:	Design #1	Database:	EDMProd

Planned Survey

Measured Depth (usft)	Inclination (°)	Azimuth (°)	Vertical Depth (usft)	+N/-S (usft)	+E/-W (usft)	Vertical Section (usft)	Dogleg Rate (°/100usft)	Build Rate (°/100usft)	Turn Rate (°/100usft)
5,400.0	0.00	0.00	5,400.0	0.0	0.0	0.0	0.00	0.00	0.00
5,500.0	0.00	0.00	5,500.0	0.0	0.0	0.0	0.00	0.00	0.00
5,600.0	0.00	0.00	5,600.0	0.0	0.0	0.0	0.00	0.00	0.00
5,700.0	0.00	0.00	5,700.0	0.0	0.0	0.0	0.00	0.00	0.00
5,800.0	0.00	0.00	5,800.0	0.0	0.0	0.0	0.00	0.00	0.00
5,900.0	0.00	0.00	5,900.0	0.0	0.0	0.0	0.00	0.00	0.00
6,000.0	0.00	0.00	6,000.0	0.0	0.0	0.0	0.00	0.00	0.00
6,100.0	0.00	0.00	6,100.0	0.0	0.0	0.0	0.00	0.00	0.00
6,200.0	0.00	0.00	6,200.0	0.0	0.0	0.0	0.00	0.00	0.00
6,300.0	0.00	0.00	6,300.0	0.0	0.0	0.0	0.00	0.00	0.00
6,400.0	0.00	0.00	6,400.0	0.0	0.0	0.0	0.00	0.00	0.00
6,500.0	0.00	0.00	6,500.0	0.0	0.0	0.0	0.00	0.00	0.00
6,600.0	0.00	0.00	6,600.0	0.0	0.0	0.0	0.00	0.00	0.00
6,700.0	0.00	0.00	6,700.0	0.0	0.0	0.0	0.00	0.00	0.00
6,800.0	0.00	0.00	6,800.0	0.0	0.0	0.0	0.00	0.00	0.00
6,900.0	0.00	0.00	6,900.0	0.0	0.0	0.0	0.00	0.00	0.00
7,000.0	0.00	0.00	7,000.0	0.0	0.0	0.0	0.00	0.00	0.00
7,100.0	0.00	0.00	7,100.0	0.0	0.0	0.0	0.00	0.00	0.00
7,200.0	0.00	0.00	7,200.0	0.0	0.0	0.0	0.00	0.00	0.00
7,300.0	0.00	0.00	7,300.0	0.0	0.0	0.0	0.00	0.00	0.00
7,358.8	0.00	0.00	7,358.8	0.0	0.0	0.0	0.00	0.00	0.00
Start Build 8.00									
7,400.0	3.30	245.90	7,400.0	-0.5	-1.1	0.6	8.00	8.00	0.00
7,450.0	7.30	245.90	7,449.8	-2.4	-5.3	3.0	8.00	8.00	0.00
7,500.0	11.30	245.90	7,499.1	-5.7	-12.7	7.1	8.00	8.00	0.00
7,550.0	15.30	245.90	7,547.7	-10.4	-23.2	13.0	8.00	8.00	0.00
7,600.0	19.30	245.90	7,595.5	-16.4	-36.7	20.6	8.00	8.00	0.00
7,650.0	23.30	245.90	7,642.0	-23.8	-53.3	30.0	8.00	8.00	0.00
7,700.0	27.30	245.90	7,687.2	-32.6	-72.8	40.9	8.00	8.00	0.00
7,750.0	31.30	245.90	7,730.8	-42.6	-95.1	53.5	8.00	8.00	0.00
7,800.0	35.30	245.90	7,772.6	-53.8	-120.2	67.6	8.00	8.00	0.00
7,850.0	39.30	245.90	7,812.4	-66.1	-147.8	83.1	8.00	8.00	0.00
7,900.0	43.30	245.90	7,849.9	-79.6	-177.9	100.0	8.00	8.00	0.00
7,911.1	44.19	245.90	7,858.0	-82.7	-185.0	104.0	8.00	8.00	0.00
Niobrara									
7,950.0	47.30	245.90	7,885.1	-94.1	-210.4	118.3	8.00	8.00	0.00
8,000.0	51.30	245.90	7,917.7	-109.6	-245.0	137.7	8.00	8.00	0.00
8,050.0	55.30	245.90	7,947.6	-125.9	-281.6	158.3	8.00	8.00	0.00
8,100.0	59.30	245.90	7,974.6	-143.1	-320.0	179.8	8.00	8.00	0.00
8,108.8	60.00	245.90	7,979.0	-146.2	-326.9	183.7	8.00	8.00	0.00
Start 150.0 hold at 8108.8 MD									
8,200.0	60.00	245.90	8,024.6	-178.5	-399.0	224.3	0.00	0.00	0.00
8,258.8	60.00	245.90	8,054.0	-199.3	-445.5	250.4	0.00	0.00	0.00
Start DLS 10.00 TFO -77.39									

SandRidge Energy

Survey Report

Company:	SandRidge Energy	Local Co-ordinate Reference:	Well Evans 0780 7-21H
Project:	North Park Basin	TVD Reference:	KB @ 8152.0usft
Site:	T7N-R80W-S16	MD Reference:	KB @ 8152.0usft
Well:	Evans 0780 7-21H	North Reference:	Grid
Wellbore:	Wellbore #1	Survey Calculation Method:	Minimum Curvature
Design:	Design #1	Database:	EDMProd

Planned Survey

Measured Depth (usft)	Inclination (°)	Azimuth (°)	Vertical Depth (usft)	+N/-S (usft)	+E/-W (usft)	Vertical Section (usft)	Dogleg Rate (°/100usft)	Build Rate (°/100usft)	Turn Rate (°/100usft)
8,300.0	60.98	241.30	8,074.3	-215.2	-477.6	270.0	10.00	2.38	-11.16
8,350.0	62.37	235.85	8,098.1	-238.2	-515.1	297.2	10.00	2.79	-10.91
8,400.0	63.97	230.54	8,120.7	-264.9	-550.8	328.0	10.00	3.20	-10.62
8,450.0	65.76	225.38	8,141.9	-295.2	-584.4	362.0	10.00	3.58	-10.32
8,500.0	67.72	220.37	8,161.7	-328.9	-615.6	399.1	10.00	3.92	-10.02
8,550.0	69.83	215.51	8,179.8	-365.6	-644.2	439.0	10.00	4.22	-9.73
8,600.0	72.07	210.78	8,196.1	-405.2	-670.1	481.3	10.00	4.48	-9.46
8,650.0	74.42	206.17	8,210.5	-447.2	-692.9	525.8	10.00	4.70	-9.22
8,700.0	76.86	201.66	8,222.9	-491.5	-712.5	572.1	10.00	4.89	-9.01
8,750.0	79.38	197.25	8,233.2	-537.6	-728.8	619.8	10.00	5.04	-8.83
8,800.0	81.96	192.91	8,241.3	-585.3	-741.6	668.6	10.00	5.16	-8.68
8,850.0	84.58	188.62	8,247.2	-634.0	-750.9	718.1	10.00	5.25	-8.57
8,900.0	87.24	184.37	8,250.8	-683.6	-756.5	768.0	10.00	5.31	-8.50
8,951.7	90.00	180.00	8,252.0	-735.2	-758.5	819.5	10.00	5.34	-8.46
Start 5654.6 hold at 8951.7 MD									
9,000.0	90.00	180.00	8,252.0	-783.5	-758.5	867.5	0.00	0.00	0.00
9,100.0	90.00	180.00	8,252.0	-883.5	-758.5	966.8	0.00	0.00	0.00
9,200.0	90.00	180.00	8,252.0	-983.5	-758.5	1,066.1	0.00	0.00	0.00
9,300.0	90.00	180.00	8,252.0	-1,083.5	-758.5	1,165.4	0.00	0.00	0.00
9,400.0	90.00	180.00	8,252.0	-1,183.5	-758.5	1,264.7	0.00	0.00	0.00
9,500.0	90.00	180.00	8,252.0	-1,283.5	-758.5	1,364.0	0.00	0.00	0.00
9,600.0	90.00	180.00	8,252.0	-1,383.5	-758.5	1,463.3	0.00	0.00	0.00
9,700.0	90.00	180.00	8,252.0	-1,483.5	-758.5	1,562.6	0.00	0.00	0.00
9,800.0	90.00	180.00	8,252.0	-1,583.5	-758.5	1,661.9	0.00	0.00	0.00
9,900.0	90.00	180.00	8,252.0	-1,683.5	-758.5	1,761.2	0.00	0.00	0.00
10,000.0	90.00	180.00	8,252.0	-1,783.5	-758.5	1,860.5	0.00	0.00	0.00
10,100.0	90.00	180.00	8,252.0	-1,883.5	-758.5	1,959.8	0.00	0.00	0.00
10,200.0	90.00	180.00	8,252.0	-1,983.5	-758.5	2,059.1	0.00	0.00	0.00
10,300.0	90.00	180.00	8,252.0	-2,083.5	-758.5	2,158.4	0.00	0.00	0.00
10,400.0	90.00	180.00	8,252.0	-2,183.5	-758.5	2,257.7	0.00	0.00	0.00
10,500.0	90.00	180.00	8,252.0	-2,283.5	-758.5	2,357.0	0.00	0.00	0.00
10,600.0	90.00	180.00	8,252.0	-2,383.5	-758.5	2,456.3	0.00	0.00	0.00
10,700.0	90.00	180.00	8,252.0	-2,483.5	-758.5	2,555.6	0.00	0.00	0.00
10,800.0	90.00	180.00	8,252.0	-2,583.5	-758.5	2,654.9	0.00	0.00	0.00
10,900.0	90.00	180.00	8,252.0	-2,683.5	-758.5	2,754.2	0.00	0.00	0.00
11,000.0	90.00	180.00	8,252.0	-2,783.5	-758.5	2,853.5	0.00	0.00	0.00
11,100.0	90.00	180.00	8,252.0	-2,883.5	-758.5	2,952.8	0.00	0.00	0.00
11,200.0	90.00	180.00	8,252.0	-2,983.5	-758.5	3,052.1	0.00	0.00	0.00
11,300.0	90.00	180.00	8,252.0	-3,083.5	-758.5	3,151.4	0.00	0.00	0.00
11,400.0	90.00	180.00	8,252.0	-3,183.5	-758.5	3,250.7	0.00	0.00	0.00
11,500.0	90.00	180.00	8,252.0	-3,283.5	-758.5	3,350.0	0.00	0.00	0.00
11,600.0	90.00	180.00	8,252.0	-3,383.5	-758.5	3,449.3	0.00	0.00	0.00
11,700.0	90.00	180.00	8,252.0	-3,483.5	-758.5	3,548.6	0.00	0.00	0.00

SandRidge Energy

Survey Report

Company:	SandRidge Energy	Local Co-ordinate Reference:	Well Evans 0780 7-21H
Project:	North Park Basin	TVD Reference:	KB @ 8152.0usft
Site:	T7N-R80W-S16	MD Reference:	KB @ 8152.0usft
Well:	Evans 0780 7-21H	North Reference:	Grid
Wellbore:	Wellbore #1	Survey Calculation Method:	Minimum Curvature
Design:	Design #1	Database:	EDMProd

Planned Survey

Measured Depth (usft)	Inclination (°)	Azimuth (°)	Vertical Depth (usft)	+N/-S (usft)	+E/-W (usft)	Vertical Section (usft)	Dogleg Rate (°/100usft)	Build Rate (°/100usft)	Turn Rate (°/100usft)
11,800.0	90.00	180.00	8,252.0	-3,583.5	-758.5	3,647.9	0.00	0.00	0.00
11,900.0	90.00	180.00	8,252.0	-3,683.5	-758.5	3,747.2	0.00	0.00	0.00
12,000.0	90.00	180.00	8,252.0	-3,783.5	-758.5	3,846.5	0.00	0.00	0.00
12,100.0	90.00	180.00	8,252.0	-3,883.5	-758.6	3,945.8	0.00	0.00	0.00
12,200.0	90.00	180.00	8,252.0	-3,983.5	-758.6	4,045.1	0.00	0.00	0.00
12,300.0	90.00	180.00	8,252.0	-4,083.5	-758.6	4,144.4	0.00	0.00	0.00
12,400.0	90.00	180.00	8,252.0	-4,183.5	-758.6	4,243.8	0.00	0.00	0.00
12,500.0	90.00	180.00	8,252.0	-4,283.5	-758.6	4,343.1	0.00	0.00	0.00
12,600.0	90.00	180.00	8,252.0	-4,383.5	-758.6	4,442.4	0.00	0.00	0.00
12,700.0	90.00	180.00	8,252.0	-4,483.5	-758.6	4,541.7	0.00	0.00	0.00
12,800.0	90.00	180.00	8,252.0	-4,583.5	-758.6	4,641.0	0.00	0.00	0.00
12,900.0	90.00	180.00	8,252.0	-4,683.5	-758.6	4,740.3	0.00	0.00	0.00
13,000.0	90.00	180.00	8,252.0	-4,783.5	-758.6	4,839.6	0.00	0.00	0.00
13,100.0	90.00	180.00	8,252.0	-4,883.5	-758.6	4,938.9	0.00	0.00	0.00
13,200.0	90.00	180.00	8,252.0	-4,983.5	-758.6	5,038.2	0.00	0.00	0.00
13,300.0	90.00	180.00	8,252.0	-5,083.5	-758.6	5,137.5	0.00	0.00	0.00
13,400.0	90.00	180.00	8,252.0	-5,183.5	-758.6	5,236.8	0.00	0.00	0.00
13,500.0	90.00	180.00	8,252.0	-5,283.5	-758.6	5,336.1	0.00	0.00	0.00
13,600.0	90.00	180.00	8,252.0	-5,383.5	-758.6	5,435.4	0.00	0.00	0.00
13,700.0	90.00	180.00	8,252.0	-5,483.5	-758.6	5,534.7	0.00	0.00	0.00
13,800.0	90.00	180.00	8,252.0	-5,583.5	-758.6	5,634.0	0.00	0.00	0.00
13,900.0	90.00	180.00	8,252.0	-5,683.5	-758.6	5,733.3	0.00	0.00	0.00
14,000.0	90.00	180.00	8,252.0	-5,783.5	-758.6	5,832.6	0.00	0.00	0.00
14,100.0	90.00	180.00	8,252.0	-5,883.5	-758.6	5,931.9	0.00	0.00	0.00
14,200.0	90.00	180.00	8,252.0	-5,983.5	-758.6	6,031.2	0.00	0.00	0.00
14,300.0	90.00	180.00	8,252.0	-6,083.5	-758.6	6,130.5	0.00	0.00	0.00
14,400.0	90.00	180.00	8,252.0	-6,183.5	-758.6	6,229.8	0.00	0.00	0.00
14,500.0	90.00	180.00	8,252.0	-6,283.5	-758.6	6,329.1	0.00	0.00	0.00
14,606.3	90.00	180.00	8,252.0	-6,389.8	-758.6	6,434.7	0.00	0.00	0.00
TD at 14606.3									

Design Targets

Target Name - hit/miss target - Shape	Dip Angle (°)	Dip Dir. (°)	TVD (usft)	+N/-S (usft)	+E/-W (usft)	Northing (usft)	Easting (usft)	Latitude	Longitude
Evans 7-21H - plan hits target center - Point	0.00	0.00	8,252.0	-6,389.8	-758.6	1,446,819.31	2,754,170.23	40° 33' 23.588 N	106° 23' 4.981 W

SandRidge Energy

Survey Report

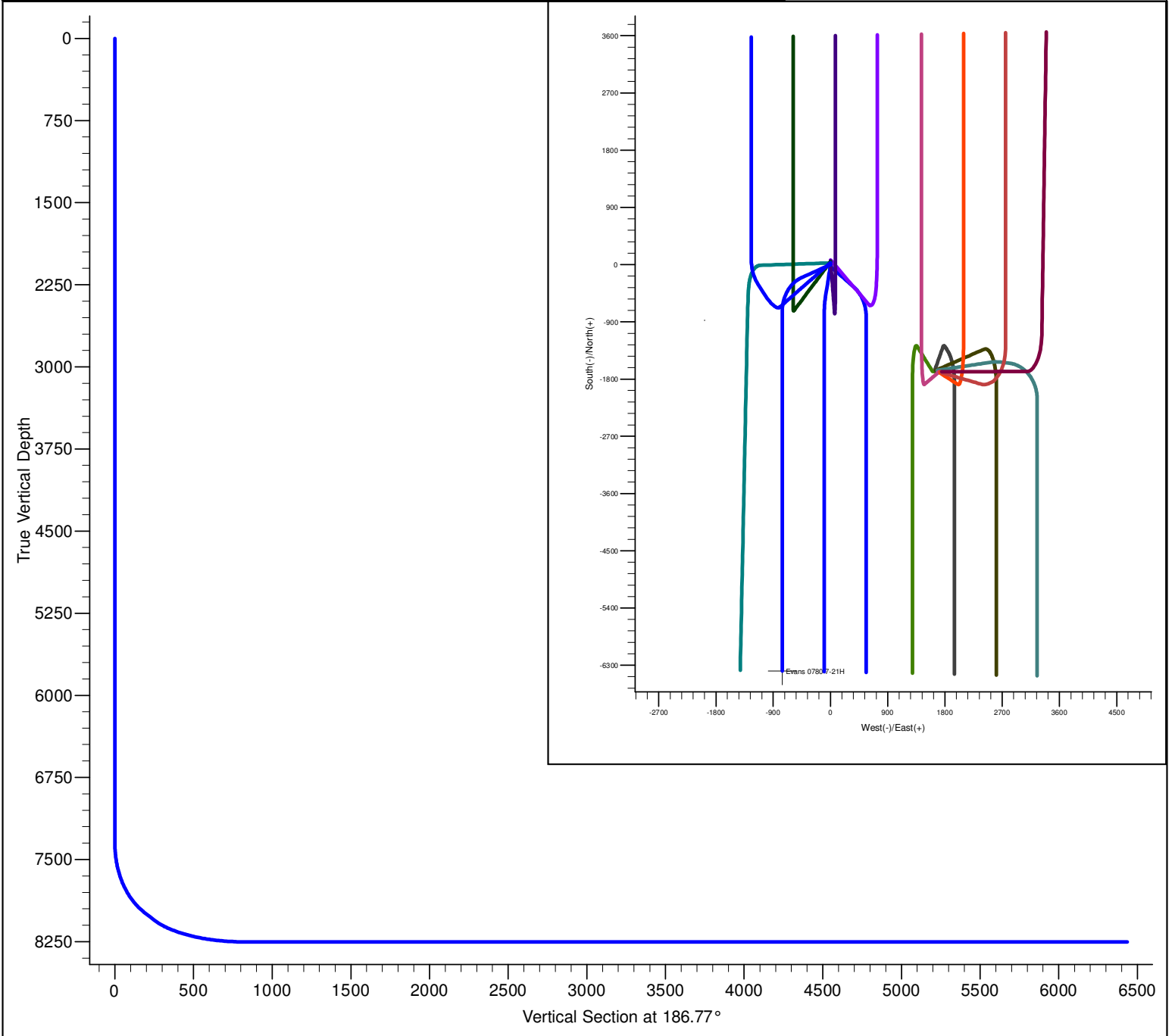
Company:	SandRidge Energy	Local Co-ordinate Reference:	Well Evans 0780 7-21H
Project:	North Park Basin	TVD Reference:	KB @ 8152.0usft
Site:	T7N-R80W-S16	MD Reference:	KB @ 8152.0usft
Well:	Evans 0780 7-21H	North Reference:	Grid
Wellbore:	Wellbore #1	Survey Calculation Method:	Minimum Curvature
Design:	Design #1	Database:	EDMProd

Formations					
Measured Depth (usft)	Vertical Depth (usft)	Name	Lithology	Dip (°)	Dip Direction (°)
7,911.1	7,860.0	Niobrara		0.00	

Plan Annotations					
Measured Depth (usft)	Vertical Depth (usft)	Local Coordinates			
		+N/-S (usft)	+E/-W (usft)	Comment	
7359	7359	0	0	Start Build 8.00	
8109	7979	-146	-327	Start 150.0 hold at 8108.8 MD	
8259	8054	-199	-445	Start DLS 10.00 TFO -77.39	
8952	8252	-735	-758	Start 5654.6 hold at 8951.7 MD	
14,606	8252	-6390	-759	TD at 14606.3	

Checked By: _____ Approved By: _____ Date: _____

PROJECT DETAILS: North Park Basin										<div><div><div><div><div></div><div>G</div></div><div><div></div><div>T</div></div><div><div></div><div>M</div></div></div><div><div></div></div></div><div><div><div></div><div></div><div></div></div></div></div> <div>Azimuths to Grid North True North: 0.57° Magnetic North: 10.45° Magnetic Field Strength: 53186.3snT Dip Angle: 66.97° Date: 12/31/2009 Model: IGRF200510</div>			
Geodetic System: US State Plane 1983 Datum: North American Datum 1983 Ellipsoid: GRS 1980 Zone: Colorado Northern Zone System Datum: Mean Sea Level													
FORMATION TOP DETAILS												CASING DETAILS	
TVDPATH 7860.0		MDPATH 7911.1		FORMATION Niobrara		DIPANGLE 0.00		DIPDIR		No casing data is available			
DESIGN DETAILS: Design #1												Project: North Park Basin Site: T7N-R80W-S16 Well: Evans 0780 7-21H Wellbore: Wellbore #1 Design: Design #1	
0' Vertical Section coordinates													
Type TD		Target	Azimuth 186.77	Origin Slot	Type	N/S 0.0	E/W 0.0	From	TVD 0.0				



SECTION DETAILS										
Sec	MD	Inc	Azi	TVD	+N/-S	+E/-W	Dleg	TFace	VSect	Target
1	0.0	0.00	0.00	0.0	0.0	0.0	0.00	0.00	0.0	
2	7358.8	0.00	0.00	7358.8	0.0	0.0	0.00	0.00	0.0	
3	8108.8	60.00	245.90	7979.0	-146.2	-326.9	8.00	245.90	183.7	
4	8258.8	60.00	245.90	8054.0	-199.3	-445.5	0.00	0.00	250.4	
5	8951.7	90.00	180.00	8252.0	-735.2	-758.5	10.00	-77.39	819.5	Evans 7-21H
6	14606.3	90.00	180.00	8252.0	-6389.8	-758.6	0.00	0.00	6434.7	Evans 7-21H