

# **SandRidge Energy**

**North Park Basin**

**T7N-R80W-S16**

**Evans 0780 6-21H**

**Wellbore #1**

**Plan: Design #1**

## **Standard Survey Report**

**08 July, 2016**

# SandRidge Energy

## Survey Report

<b>Company:</b>	SandRidge Energy	<b>Local Co-ordinate Reference:</b>	Well Evans 0780 6-21H
<b>Project:</b>	North Park Basin	<b>TVD Reference:</b>	KB @ 8154.0usft
<b>Site:</b>	T7N-R80W-S16	<b>MD Reference:</b>	KB @ 8154.0usft
<b>Well:</b>	Evans 0780 6-21H	<b>North Reference:</b>	Grid
<b>Wellbore:</b>	Wellbore #1	<b>Survey Calculation Method:</b>	Minimum Curvature
<b>Design:</b>	Design #1	<b>Database:</b>	EDMProd

<b>Project</b>	North Park Basin		
<b>Map System:</b>	US State Plane 1983	<b>System Datum:</b>	Mean Sea Level
<b>Geo Datum:</b>	North American Datum 1983		
<b>Map Zone:</b>	Colorado Northern Zone		

Site		T7N-R80W-S16			
Site Position:		Northing:	1,453,179.12 usft	Latitude:	40° 34' 26.505 N
From:	Map	Easting:	2,754,928.85 usft	Longitude:	106° 22' 55.973 W
Position Uncertainty:	0.0 usft	Slot Radius:	13-3/16 "	Grid Convergence:	-0.57 °

Well	Evans 0780 6-21H					
Well Position	+N/-S	0.0 usft	Northing:	1,453,194.12 usft	Latitude:	40° 34' 26.654 N
	+E/-W	0.0 usft	Easting:	2,754,928.85 usft	Longitude:	106° 22' 55.975 W
Position Uncertainty		0.0 usft	Wellhead Elevation:	0.0 usft	Ground Level:	8,136.0 usft

<b>Wellbore</b>	Wellbore #1				
<b>Magnetics</b>	<b>Model Name</b>	<b>Sample Date</b>	<b>Declination (°)</b>	<b>Dip Angle (°)</b>	<b>Field Strength (nT)</b>
	IGRF200510	12/31/2009	9.88	66.97	53,186

<b>Design</b>	Design #1				
<b>Audit Notes:</b>					
<b>Version:</b>	<b>Phase:</b>	PROTOTYPE	<b>Tie On Depth:</b>	0.0	
<b>Vertical Section:</b>	<b>Depth From (TVD) (usft)</b>	<b>+N/-S (usft)</b>	<b>+E/-W (usft)</b>	<b>Direction (°)</b>	
	0.0	0.0	0.0	180.89	

<b>Survey Tool Program</b>	<b>Date</b>	7/8/2016			
<b>From (usft)</b>	<b>To (usft)</b>	<b>Survey (Wellbore)</b>	<b>Tool Name</b>	<b>Description</b>	
0.0	14,296.8	Design #1 (Wellbore #1)	Sperry MWD	Fixed:v2:standard declination	

<b>Planned Survey</b>										
<b>Measured Depth (usft)</b>	<b>Inclination (°)</b>	<b>Azimuth (°)</b>	<b>Vertical Depth (usft)</b>	<b>+N/-S (usft)</b>	<b>+E/-W (usft)</b>	<b>Vertical Section (usft)</b>	<b>Dogleg Rate (°/100usft)</b>	<b>Build Rate (°/100usft)</b>	<b>Turn Rate (°/100usft)</b>	
0.0	0.00	0.00	0.0	0.0	0.0	0.0	0.00	0.00	0.00	
100.0	0.00	0.00	100.0	0.0	0.0	0.0	0.00	0.00	0.00	
200.0	0.00	0.00	200.0	0.0	0.0	0.0	0.00	0.00	0.00	
300.0	0.00	0.00	300.0	0.0	0.0	0.0	0.00	0.00	0.00	
400.0	0.00	0.00	400.0	0.0	0.0	0.0	0.00	0.00	0.00	
500.0	0.00	0.00	500.0	0.0	0.0	0.0	0.00	0.00	0.00	
600.0	0.00	0.00	600.0	0.0	0.0	0.0	0.00	0.00	0.00	
700.0	0.00	0.00	700.0	0.0	0.0	0.0	0.00	0.00	0.00	
800.0	0.00	0.00	800.0	0.0	0.0	0.0	0.00	0.00	0.00	
900.0	0.00	0.00	900.0	0.0	0.0	0.0	0.00	0.00	0.00	

# SandRidge Energy

## Survey Report

<b>Company:</b>	SandRidge Energy	<b>Local Co-ordinate Reference:</b>	Well Evans 0780 6-21H
<b>Project:</b>	North Park Basin	<b>TVD Reference:</b>	KB @ 8154.0usft
<b>Site:</b>	T7N-R80W-S16	<b>MD Reference:</b>	KB @ 8154.0usft
<b>Well:</b>	Evans 0780 6-21H	<b>North Reference:</b>	Grid
<b>Wellbore:</b>	Wellbore #1	<b>Survey Calculation Method:</b>	Minimum Curvature
<b>Design:</b>	Design #1	<b>Database:</b>	EDMProd

### Planned Survey

Measured Depth (usft)	Inclination (°)	Azimuth (°)	Vertical Depth (usft)	+N/-S (usft)	+E/-W (usft)	Vertical Section (usft)	Dogleg Rate (°/100usft)	Build Rate (°/100usft)	Turn Rate (°/100usft)
1,000.0	0.00	0.00	1,000.0	0.0	0.0	0.0	0.00	0.00	0.00
1,100.0	0.00	0.00	1,100.0	0.0	0.0	0.0	0.00	0.00	0.00
1,200.0	0.00	0.00	1,200.0	0.0	0.0	0.0	0.00	0.00	0.00
1,300.0	0.00	0.00	1,300.0	0.0	0.0	0.0	0.00	0.00	0.00
1,400.0	0.00	0.00	1,400.0	0.0	0.0	0.0	0.00	0.00	0.00
1,500.0	0.00	0.00	1,500.0	0.0	0.0	0.0	0.00	0.00	0.00
1,600.0	0.00	0.00	1,600.0	0.0	0.0	0.0	0.00	0.00	0.00
1,700.0	0.00	0.00	1,700.0	0.0	0.0	0.0	0.00	0.00	0.00
1,800.0	0.00	0.00	1,800.0	0.0	0.0	0.0	0.00	0.00	0.00
1,900.0	0.00	0.00	1,900.0	0.0	0.0	0.0	0.00	0.00	0.00
2,000.0	0.00	0.00	2,000.0	0.0	0.0	0.0	0.00	0.00	0.00
2,100.0	0.00	0.00	2,100.0	0.0	0.0	0.0	0.00	0.00	0.00
2,200.0	0.00	0.00	2,200.0	0.0	0.0	0.0	0.00	0.00	0.00
2,300.0	0.00	0.00	2,300.0	0.0	0.0	0.0	0.00	0.00	0.00
2,400.0	0.00	0.00	2,400.0	0.0	0.0	0.0	0.00	0.00	0.00
2,500.0	0.00	0.00	2,500.0	0.0	0.0	0.0	0.00	0.00	0.00
2,600.0	0.00	0.00	2,600.0	0.0	0.0	0.0	0.00	0.00	0.00
2,700.0	0.00	0.00	2,700.0	0.0	0.0	0.0	0.00	0.00	0.00
2,800.0	0.00	0.00	2,800.0	0.0	0.0	0.0	0.00	0.00	0.00
2,900.0	0.00	0.00	2,900.0	0.0	0.0	0.0	0.00	0.00	0.00
3,000.0	0.00	0.00	3,000.0	0.0	0.0	0.0	0.00	0.00	0.00
3,100.0	0.00	0.00	3,100.0	0.0	0.0	0.0	0.00	0.00	0.00
3,200.0	0.00	0.00	3,200.0	0.0	0.0	0.0	0.00	0.00	0.00
3,300.0	0.00	0.00	3,300.0	0.0	0.0	0.0	0.00	0.00	0.00
3,400.0	0.00	0.00	3,400.0	0.0	0.0	0.0	0.00	0.00	0.00
3,500.0	0.00	0.00	3,500.0	0.0	0.0	0.0	0.00	0.00	0.00
3,600.0	0.00	0.00	3,600.0	0.0	0.0	0.0	0.00	0.00	0.00
3,700.0	0.00	0.00	3,700.0	0.0	0.0	0.0	0.00	0.00	0.00
3,800.0	0.00	0.00	3,800.0	0.0	0.0	0.0	0.00	0.00	0.00
3,900.0	0.00	0.00	3,900.0	0.0	0.0	0.0	0.00	0.00	0.00
4,000.0	0.00	0.00	4,000.0	0.0	0.0	0.0	0.00	0.00	0.00
4,100.0	0.00	0.00	4,100.0	0.0	0.0	0.0	0.00	0.00	0.00
4,200.0	0.00	0.00	4,200.0	0.0	0.0	0.0	0.00	0.00	0.00
4,300.0	0.00	0.00	4,300.0	0.0	0.0	0.0	0.00	0.00	0.00
4,400.0	0.00	0.00	4,400.0	0.0	0.0	0.0	0.00	0.00	0.00
4,500.0	0.00	0.00	4,500.0	0.0	0.0	0.0	0.00	0.00	0.00
4,600.0	0.00	0.00	4,600.0	0.0	0.0	0.0	0.00	0.00	0.00
4,700.0	0.00	0.00	4,700.0	0.0	0.0	0.0	0.00	0.00	0.00
4,800.0	0.00	0.00	4,800.0	0.0	0.0	0.0	0.00	0.00	0.00
4,900.0	0.00	0.00	4,900.0	0.0	0.0	0.0	0.00	0.00	0.00
5,000.0	0.00	0.00	5,000.0	0.0	0.0	0.0	0.00	0.00	0.00
5,100.0	0.00	0.00	5,100.0	0.0	0.0	0.0	0.00	0.00	0.00
5,200.0	0.00	0.00	5,200.0	0.0	0.0	0.0	0.00	0.00	0.00
5,300.0	0.00	0.00	5,300.0	0.0	0.0	0.0	0.00	0.00	0.00

# SandRidge Energy

## Survey Report

<b>Company:</b>	SandRidge Energy	<b>Local Co-ordinate Reference:</b>	Well Evans 0780 6-21H
<b>Project:</b>	North Park Basin	<b>TVD Reference:</b>	KB @ 8154.0usft
<b>Site:</b>	T7N-R80W-S16	<b>MD Reference:</b>	KB @ 8154.0usft
<b>Well:</b>	Evans 0780 6-21H	<b>North Reference:</b>	Grid
<b>Wellbore:</b>	Wellbore #1	<b>Survey Calculation Method:</b>	Minimum Curvature
<b>Design:</b>	Design #1	<b>Database:</b>	EDMProd

### Planned Survey

Measured Depth (usft)	Inclination (°)	Azimuth (°)	Vertical Depth (usft)	+N/-S (usft)	+E/-W (usft)	Vertical Section (usft)	Dogleg Rate (°/100usft)	Build Rate (°/100usft)	Turn Rate (°/100usft)
5,400.0	0.00	0.00	5,400.0	0.0	0.0	0.0	0.00	0.00	0.00
5,500.0	0.00	0.00	5,500.0	0.0	0.0	0.0	0.00	0.00	0.00
5,600.0	0.00	0.00	5,600.0	0.0	0.0	0.0	0.00	0.00	0.00
5,700.0	0.00	0.00	5,700.0	0.0	0.0	0.0	0.00	0.00	0.00
5,800.0	0.00	0.00	5,800.0	0.0	0.0	0.0	0.00	0.00	0.00
5,900.0	0.00	0.00	5,900.0	0.0	0.0	0.0	0.00	0.00	0.00
6,000.0	0.00	0.00	6,000.0	0.0	0.0	0.0	0.00	0.00	0.00
6,100.0	0.00	0.00	6,100.0	0.0	0.0	0.0	0.00	0.00	0.00
6,200.0	0.00	0.00	6,200.0	0.0	0.0	0.0	0.00	0.00	0.00
6,300.0	0.00	0.00	6,300.0	0.0	0.0	0.0	0.00	0.00	0.00
6,400.0	0.00	0.00	6,400.0	0.0	0.0	0.0	0.00	0.00	0.00
6,500.0	0.00	0.00	6,500.0	0.0	0.0	0.0	0.00	0.00	0.00
6,600.0	0.00	0.00	6,600.0	0.0	0.0	0.0	0.00	0.00	0.00
6,700.0	0.00	0.00	6,700.0	0.0	0.0	0.0	0.00	0.00	0.00
6,800.0	0.00	0.00	6,800.0	0.0	0.0	0.0	0.00	0.00	0.00
6,900.0	0.00	0.00	6,900.0	0.0	0.0	0.0	0.00	0.00	0.00
7,000.0	0.00	0.00	7,000.0	0.0	0.0	0.0	0.00	0.00	0.00
7,100.0	0.00	0.00	7,100.0	0.0	0.0	0.0	0.00	0.00	0.00
7,200.0	0.00	0.00	7,200.0	0.0	0.0	0.0	0.00	0.00	0.00
7,300.0	0.00	0.00	7,300.0	0.0	0.0	0.0	0.00	0.00	0.00
7,400.0	0.00	0.00	7,400.0	0.0	0.0	0.0	0.00	0.00	0.00
7,476.7	0.00	0.00	7,476.7	0.0	0.0	0.0	0.00	0.00	0.00
<b>Start Build 8.00</b>									
7,500.0	1.86	189.10	7,500.0	-0.4	-0.1	0.4	8.00	8.00	0.00
7,550.0	5.86	189.10	7,549.9	-3.7	-0.6	3.7	8.00	8.00	0.00
7,600.0	9.86	189.10	7,599.4	-10.5	-1.7	10.5	8.00	8.00	0.00
7,650.0	13.86	189.10	7,648.3	-20.6	-3.3	20.7	8.00	8.00	0.00
7,700.0	17.86	189.10	7,696.4	-34.1	-5.5	34.2	8.00	8.00	0.00
7,750.0	21.86	189.10	7,743.4	-50.9	-8.1	51.0	8.00	8.00	0.00
7,800.0	25.86	189.10	7,789.1	-70.8	-11.3	71.0	8.00	8.00	0.00
7,850.0	29.86	189.10	7,833.3	-93.9	-15.0	94.1	8.00	8.00	0.00
7,878.8	32.17	189.10	7,858.0	-108.6	-17.4	108.8	8.00	8.00	0.00
<b>Niobrara</b>									
7,900.0	33.86	189.10	7,875.8	-120.0	-19.2	120.2	8.00	8.00	0.00
7,950.0	37.86	189.10	7,916.3	-148.9	-23.8	149.2	8.00	8.00	0.00
8,000.0	41.86	189.10	7,954.7	-180.5	-28.9	180.9	8.00	8.00	0.00
8,050.0	45.86	189.10	7,990.7	-214.7	-34.4	215.2	8.00	8.00	0.00
8,100.0	49.86	189.10	8,024.2	-251.3	-40.3	251.9	8.00	8.00	0.00
8,150.0	53.86	189.10	8,055.1	-290.2	-46.5	290.8	8.00	8.00	0.00
8,200.0	57.86	189.10	8,083.2	-331.0	-53.0	331.8	8.00	8.00	0.00
8,226.7	60.00	189.10	8,096.9	-353.6	-56.6	354.4	8.00	8.00	0.00
<b>Start 150.0 hold at 8226.7 MD</b>									
8,300.0	60.00	189.10	8,133.6	-416.3	-66.7	417.3	0.00	0.00	0.00
8,376.7	60.00	189.10	8,171.9	-481.9	-77.2	483.0	0.00	0.00	0.00

# SandRidge Energy

## Survey Report

<b>Company:</b>	SandRidge Energy	<b>Local Co-ordinate Reference:</b>	Well Evans 0780 6-21H
<b>Project:</b>	North Park Basin	<b>TVD Reference:</b>	KB @ 8154.0usft
<b>Site:</b>	T7N-R80W-S16	<b>MD Reference:</b>	KB @ 8154.0usft
<b>Well:</b>	Evans 0780 6-21H	<b>North Reference:</b>	Grid
<b>Wellbore:</b>	Wellbore #1	<b>Survey Calculation Method:</b>	Minimum Curvature
<b>Design:</b>	Design #1	<b>Database:</b>	EDMProd

### Planned Survey

Measured Depth (usft)	Inclination (°)	Azimuth (°)	Vertical Depth (usft)	+N/-S (usft)	+E/-W (usft)	Vertical Section (usft)	Dogleg Rate (°/100usft)	Build Rate (°/100usft)	Turn Rate (°/100usft)
<b>Start DLS 10.00 TFO -17.77</b>									
8,400.0	62.22	188.30	8,183.2	-502.0	-80.3	503.2	10.00	9.53	-3.45
8,450.0	67.00	186.68	8,204.6	-546.8	-86.1	548.1	10.00	9.56	-3.24
8,500.0	71.80	185.17	8,222.2	-593.3	-91.0	594.7	10.00	9.59	-3.02
8,550.0	76.61	183.74	8,235.8	-641.3	-94.7	642.7	10.00	9.62	-2.86
8,600.0	81.42	182.37	8,245.4	-690.3	-97.3	691.7	10.00	9.63	-2.74
8,650.0	86.24	181.03	8,250.7	-740.0	-98.8	741.4	10.00	9.64	-2.68
8,689.0	90.00	180.00	8,252.0	-778.9	-99.1	780.3	10.00	9.64	-2.65
<b>Start 5607.9 hold at 8689.0 MD</b>									
8,700.0	90.00	180.00	8,252.0	-789.9	-99.1	791.4	0.00	0.00	0.00
8,800.0	90.00	180.00	8,252.0	-889.9	-99.1	891.4	0.00	0.00	0.00
8,900.0	90.00	180.00	8,252.0	-989.9	-99.1	991.3	0.00	0.00	0.00
9,000.0	90.00	180.00	8,252.0	-1,089.9	-99.1	1,091.3	0.00	0.00	0.00
9,100.0	90.00	180.00	8,252.0	-1,189.9	-99.1	1,191.3	0.00	0.00	0.00
9,200.0	90.00	180.00	8,252.0	-1,289.9	-99.1	1,291.3	0.00	0.00	0.00
9,300.0	90.00	180.00	8,252.0	-1,389.9	-99.1	1,391.3	0.00	0.00	0.00
9,400.0	90.00	180.00	8,252.0	-1,489.9	-99.1	1,491.3	0.00	0.00	0.00
9,500.0	90.00	180.00	8,252.0	-1,589.9	-99.0	1,591.3	0.00	0.00	0.00
9,600.0	90.00	180.00	8,252.0	-1,689.9	-99.0	1,691.3	0.00	0.00	0.00
9,700.0	90.00	180.00	8,252.0	-1,789.9	-99.0	1,791.2	0.00	0.00	0.00
9,800.0	90.00	180.00	8,252.0	-1,889.9	-99.0	1,891.2	0.00	0.00	0.00
9,900.0	90.00	180.00	8,252.0	-1,989.9	-99.0	1,991.2	0.00	0.00	0.00
10,000.0	90.00	180.00	8,252.0	-2,089.9	-99.0	2,091.2	0.00	0.00	0.00
10,100.0	90.00	180.00	8,252.0	-2,189.9	-99.0	2,191.2	0.00	0.00	0.00
10,200.0	90.00	180.00	8,252.0	-2,289.9	-99.0	2,291.2	0.00	0.00	0.00
10,300.0	90.00	180.00	8,252.0	-2,389.9	-99.0	2,391.2	0.00	0.00	0.00
10,400.0	90.00	180.00	8,252.0	-2,489.9	-99.0	2,491.2	0.00	0.00	0.00
10,500.0	90.00	180.00	8,252.0	-2,589.9	-99.0	2,591.2	0.00	0.00	0.00
10,600.0	90.00	180.00	8,252.0	-2,689.9	-99.0	2,691.1	0.00	0.00	0.00
10,700.0	90.00	180.00	8,252.0	-2,789.9	-99.0	2,791.1	0.00	0.00	0.00
10,800.0	90.00	180.00	8,252.0	-2,889.9	-99.0	2,891.1	0.00	0.00	0.00
10,900.0	90.00	180.00	8,252.0	-2,989.9	-99.0	2,991.1	0.00	0.00	0.00
11,000.0	90.00	180.00	8,252.0	-3,089.9	-98.9	3,091.1	0.00	0.00	0.00
11,100.0	90.00	180.00	8,252.0	-3,189.9	-98.9	3,191.1	0.00	0.00	0.00
11,200.0	90.00	180.00	8,252.0	-3,289.9	-98.9	3,291.1	0.00	0.00	0.00
11,300.0	90.00	180.00	8,252.0	-3,389.9	-98.9	3,391.1	0.00	0.00	0.00
11,400.0	90.00	180.00	8,252.0	-3,489.9	-98.9	3,491.0	0.00	0.00	0.00
11,500.0	90.00	180.00	8,252.0	-3,589.9	-98.9	3,591.0	0.00	0.00	0.00
11,600.0	90.00	180.00	8,252.0	-3,689.9	-98.9	3,691.0	0.00	0.00	0.00
11,700.0	90.00	180.00	8,252.0	-3,789.9	-98.9	3,791.0	0.00	0.00	0.00
11,800.0	90.00	180.00	8,252.0	-3,889.9	-98.9	3,891.0	0.00	0.00	0.00
11,900.0	90.00	180.00	8,252.0	-3,989.9	-98.9	3,991.0	0.00	0.00	0.00
12,000.0	90.00	180.00	8,252.0	-4,089.9	-98.9	4,091.0	0.00	0.00	0.00

# SandRidge Energy

## Survey Report

<b>Company:</b>	SandRidge Energy	<b>Local Co-ordinate Reference:</b>	Well Evans 0780 6-21H
<b>Project:</b>	North Park Basin	<b>TVD Reference:</b>	KB @ 8154.0usft
<b>Site:</b>	T7N-R80W-S16	<b>MD Reference:</b>	KB @ 8154.0usft
<b>Well:</b>	Evans 0780 6-21H	<b>North Reference:</b>	Grid
<b>Wellbore:</b>	Wellbore #1	<b>Survey Calculation Method:</b>	Minimum Curvature
<b>Design:</b>	Design #1	<b>Database:</b>	EDMProd

### Planned Survey

Measured Depth (usft)	Inclination (°)	Azimuth (°)	Vertical Depth (usft)	+N/-S (usft)	+E/-W (usft)	Vertical Section (usft)	Dogleg Rate (°/100usft)	Build Rate (°/100usft)	Turn Rate (°/100usft)
12,100.0	90.00	180.00	8,252.0	-4,189.9	-98.9	4,191.0	0.00	0.00	0.00
12,200.0	90.00	180.00	8,252.0	-4,289.9	-98.9	4,290.9	0.00	0.00	0.00
12,300.0	90.00	180.00	8,252.0	-4,389.9	-98.9	4,390.9	0.00	0.00	0.00
12,400.0	90.00	180.00	8,252.0	-4,489.9	-98.8	4,490.9	0.00	0.00	0.00
12,500.0	90.00	180.00	8,252.0	-4,589.9	-98.8	4,590.9	0.00	0.00	0.00
12,600.0	90.00	180.00	8,252.0	-4,689.9	-98.8	4,690.9	0.00	0.00	0.00
12,700.0	90.00	180.00	8,252.0	-4,789.9	-98.8	4,790.9	0.00	0.00	0.00
12,800.0	90.00	180.00	8,252.0	-4,889.9	-98.8	4,890.9	0.00	0.00	0.00
12,900.0	90.00	180.00	8,252.0	-4,989.9	-98.8	4,990.9	0.00	0.00	0.00
13,000.0	90.00	180.00	8,252.0	-5,089.9	-98.8	5,090.8	0.00	0.00	0.00
13,100.0	90.00	180.00	8,252.0	-5,189.9	-98.8	5,190.8	0.00	0.00	0.00
13,200.0	90.00	180.00	8,252.0	-5,289.9	-98.8	5,290.8	0.00	0.00	0.00
13,300.0	90.00	180.00	8,252.0	-5,389.9	-98.8	5,390.8	0.00	0.00	0.00
13,400.0	90.00	180.00	8,252.0	-5,489.9	-98.8	5,490.8	0.00	0.00	0.00
13,500.0	90.00	180.00	8,252.0	-5,589.9	-98.8	5,590.8	0.00	0.00	0.00
13,600.0	90.00	180.00	8,252.0	-5,689.9	-98.8	5,690.8	0.00	0.00	0.00
13,700.0	90.00	180.00	8,252.0	-5,789.9	-98.8	5,790.8	0.00	0.00	0.00
13,800.0	90.00	180.00	8,252.0	-5,889.9	-98.8	5,890.8	0.00	0.00	0.00
13,900.0	90.00	180.00	8,252.0	-5,989.9	-98.7	5,990.7	0.00	0.00	0.00
14,000.0	90.00	180.00	8,252.0	-6,089.9	-98.7	6,090.7	0.00	0.00	0.00
14,100.0	90.00	180.00	8,252.0	-6,189.9	-98.7	6,190.7	0.00	0.00	0.00
14,200.0	90.00	180.00	8,252.0	-6,289.9	-98.7	6,290.7	0.00	0.00	0.00
14,296.8	90.00	180.00	8,252.0	-6,386.8	-98.7	6,387.5	0.00	0.00	0.00
TD at 14296.8									

### Design Targets

Target Name - hit/miss target - Shape	Dip Angle (°)	Dip Dir. (°)	TVD (usft)	+N/-S (usft)	+E/-W (usft)	Northing (usft)	Easting (usft)	Latitude	Longitude
Evans 6-21H - plan hits target center - Point	0.00	360.00	8,252.0	-6,386.8	-98.7	1,446,807.36	2,754,830.13	40° 33' 23.535 N	106° 22' 56.431 W

### Formations

Measured Depth (usft)	Vertical Depth (usft)	Name	Lithology	Dip (°)	Dip Direction (°)
7,878.8	7,858.0	Niobrara		0.00	

**SandRidge Energy**  
Survey Report

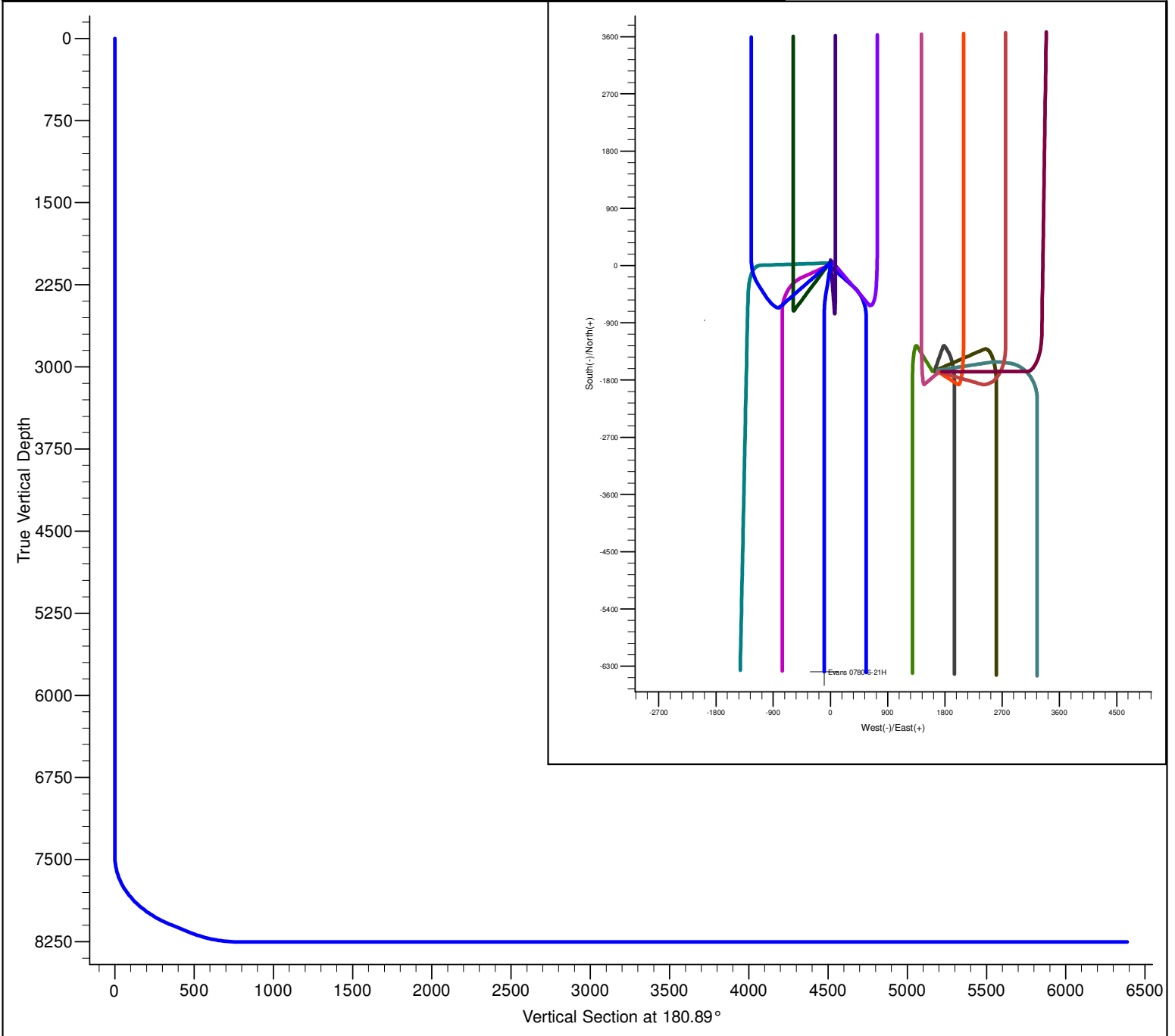
<b>Company:</b>	SandRidge Energy	<b>Local Co-ordinate Reference:</b>	Well Evans 0780 6-21H
<b>Project:</b>	North Park Basin	<b>TVD Reference:</b>	KB @ 8154.0usft
<b>Site:</b>	T7N-R80W-S16	<b>MD Reference:</b>	KB @ 8154.0usft
<b>Well:</b>	Evans 0780 6-21H	<b>North Reference:</b>	Grid
<b>Wellbore:</b>	Wellbore #1	<b>Survey Calculation Method:</b>	Minimum Curvature
<b>Design:</b>	Design #1	<b>Database:</b>	EDMProd

**Plan Annotations**

Measured Depth (usft)	Vertical Depth (usft)	Local Coordinates		Comment
		+N/-S (usft)	+E/-W (usft)	
7477	7477	0	0	Start Build 8.00
8227	8097	-354	-57	Start 150.0 hold at 8226.7 MD
8377	8172	-482	-77	Start DLS 10.00 TFO -17.77
8689	8252	-779	-99	Start 5607.9 hold at 8689.0 MD
14,297	8252	-6387	-99	TD at 14296.8

Checked By: \_\_\_\_\_ Approved By: \_\_\_\_\_ Date: \_\_\_\_\_

PROJECT DETAILS: North Park Basin										<div><div><div><div></div><div>G</div></div><div><div></div><div>T</div></div><div><div></div><div>M</div></div></div><div><div></div></div></div> <div>Azimuths to Grid North True North: 0.57° Magnetic North: 10.45°  Magnetic Field Strength: 53186.3snT Dip Angle: 66.97° Date: 12/31/2009 Model: IGRF200510</div>			
Geodetic System: US State Plane 1983 Datum: North American Datum 1983 Ellipsoid: GRS 1980 Zone: Colorado Northern Zone  System Datum: Mean Sea Level													
FORMATION TOP DETAILS												CASING DETAILS	
TVDPPath 7858.0		MDPath 7878.8		Formation Niobrara		DipAngle 0.00		DipDir		No casing data is available			
DESIGN DETAILS: Design #1												Project: North Park Basin Site: T7N-R80W-S16 Well: Evans 0780 6-21H Wellbore: Wellbore #1 Design: Design #1	
0' Vertical Section coordinates													
Type TD	Target	Azimuth 180.89	Origin Slot	Type	N/S 0.0	E/W 0.0	From	TVD 0.0					



SECTION DETAILS										
Sec	MD	Inc	Azi	TVD	+N/-S	+E/-W	Dleg	TFace	VSect	Target
1	0.0	0.00	0.00	0.0	0.0	0.0	0.00	0.00	0.0	
2	7476.7	0.00	0.00	7476.7	0.0	0.0	0.00	0.00	0.0	
3	8226.7	60.00	189.10	8096.9	-353.6	-56.6	8.00	189.10	354.4	
4	8376.7	60.00	189.10	8171.9	-481.9	-77.2	0.00	0.00	483.0	
5	8689.0	90.00	180.00	8252.0	-778.9	-99.1	10.00	-17.77	780.3	Evans 6-21H
6	14296.8	90.00	180.00	8252.0	-6386.8	-98.7	0.00	0.00	6387.5	Evans 6-21H