

T7N, R80W, 6th P.M.

SandRidge Exploration & Production, LLC

Surface Location, EVANS 0780 5-21H located as shown in the SE1/4SW1/4 of SECTION 16, T7N, R80W, 6th P.M., Jackson County, Colorado.

BASIS OF BEARINGS:

US STATE PLANE 1983  
CO NORTH 0501 GRID

BASIS OF ELEVATION

SPOT ELEVATION AT THE NE CORNER OF SECTION 24, T7N, R80W, 6TH PM, TAKEN FROM THE COALMONT QUADRANGLE, USGS 7.5 MIN QUAD (TOPOGRAPHIC MAP) WITH SAID ELEVATION MARKED AS BEING 8223 FEET.

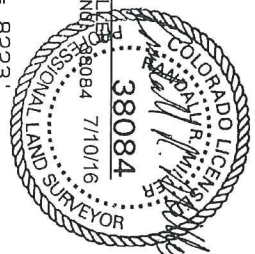
SURFACE USE  
AGRICULTURAL/GRAZING

GRAPHIC SCALE 1"=1000'



CERTIFICATE

THIS IS TO CERTIFY THAT THE ABOVE PLAT WAS PREPARED FROM FIELD NOTES OF ACTUAL SURVEYS MADE BY ME OR UNDER MY SUPERVISION AND THAT THE SAME ARE TRUE AND CORRECT TO THE BEST OF MY KNOWLEDGE AND BELIEF.



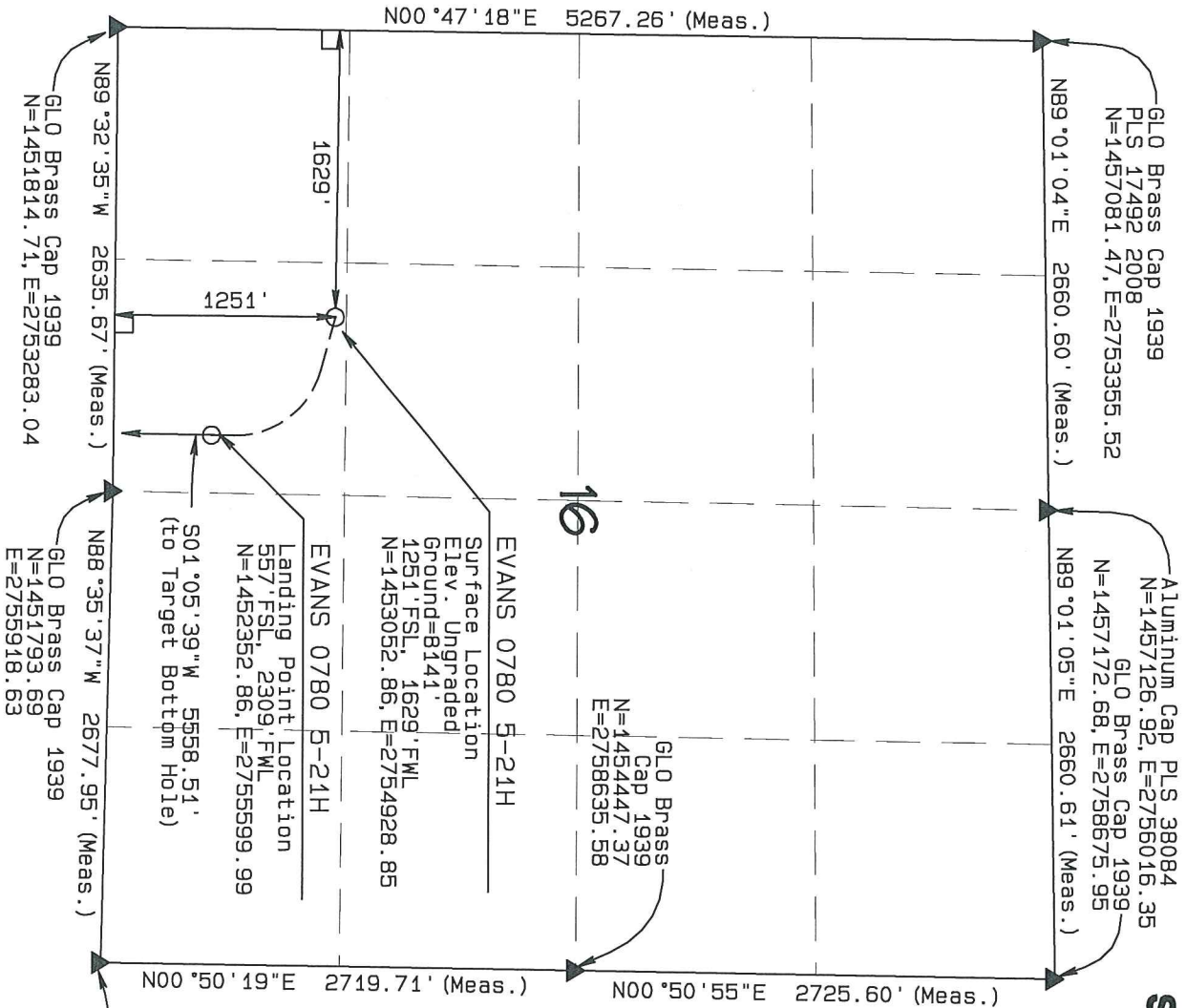
RANDALL R. MILLER  
38084 7/10/16  
COLORADO PLS NO. 38084

NORTH PARK ENGINEERING & CONSULTING, INC.  
P.O. BOX 395  
MILDEN, CO 80480  
(970) 723-3725

90° SYMBOL  
FOUND CORNER  
PROPOSED WELL  
PROPOSED BHL/LPL

NAD 83 (TARGET BOTTOM HOLE)	NAD 83 (SURFACE LOCATION)	NAD 83 (LANDING POINT LOCATION)
LATITUDE=40.55523°N LONGITUDE=106.379953°W	LATITUDE=40.573683°N LONGITUDE=106.382210°W PDDP=1.050	LATITUDE=40.571780°N LONGITUDE=106.379769°W

LEGEND



T7N, R80W, 6th P.M.

# Sandridge Exploration & Production, LLC

Bottom Hole Location, EVANS 0780 5-21H located as shown in the SE1/4SW1/4 of SECTION 21, T7N, R80W, 6th P.M., Jackson County, Colorado.

## BASIS OF BEARINGS:

US STATE PLANE 1983  
CO NORTH 0501 GRID

## BASIS OF ELEVATION

SPOT ELEVATION AT THE NE CORNER OF SECTION 21, T7N, R80W, 6TH PM, TAKEN FROM THE COALMONT QUADRANGLE, USGS 7.5 MIN QUAD (TOPOGRAPHIC MAP) WITH SAID ELEVATION MARKED AS BEING 8223 FEET.

## SURFACE USE

AGRICULTURAL/GRAZING

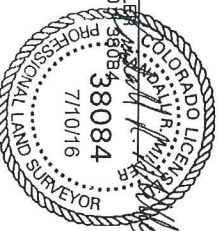
GRAPHIC SCALE 1"=1000'



## CERTIFICATE

THIS IS TO CERTIFY THAT THE ABOVE PLAT WAS PREPARED FROM FIELD NOTES OF ACTUAL SURVEYS MADE BY ME OR UNDER MY SUPERVISION AND THAT THE SAME ARE TRUE AND CORRECT TO THE BEST OF MY KNOWLEDGE AND BELIEF.

RANDALL R. MILLER  
COLORADO PLS NO. 38084



## LEGEND

90° SYMBOL  
FOUND CORNER  
PROPOSED WELL  
PROPOSED BHL/LPL

NAD 83 (SURFACE LOCATION)	
LATITUDE=40.573683°N	PDOP=1.050
LONGITUDE=106.382210°W	
NAD 83 (TARGET BOTTOM HOLE)	
LATITUDE=40.565523°N	
LONGITUDE=106.379953°W	
NAD 83 (LANDING POINT LOCATION)	
LATITUDE=40.571780°N	
LONGITUDE=106.379769°W	

NORTH PARK ENGINEERING & CONSULTING, INC.

P.O. BOX 395  
WALDEN, CO 80480  
(970) 723-3723

DATE OF FIELD WORK: JUNE 15, 2016  
DRAWING COMPLETION: JULY 10, 2016  
SURVEYED BY: ADL  
DRAWN BY: DJM  
CHECKED BY: FRM

