



Kerr-McGee Oil & Gas Onshore LP

A subsidiary of Anadarko Petroleum Corporation

1099 18th Street
Denver, CO 80202
720-929-6000

July 8, 2016

Matt Lepore
Director, Colorado Oil and Gas Conservation Commission
Department of Natural Resources
The Chancery Building
1120 Lincoln Street, Suite 801
Denver, CO 80203

Re: **30 Day Certification Letter - 318A.e**
FOLLEY NORTH #1 (Doc #401059342)
Township 5 North, Range 68 West
Section 13: SE/4NE/4
Unit Acreage: 800
Unit Spacing: 05N-68W-Sec 13 N/2
05N-68W-Sec 14 N/2
05N-68W-Sec 15 NE/4
Weld County, Colorado

Dear Director Lepore:

Kerr-McGee Oil and Gas Onshore LP ("KMG") hereby certifies that a thirty (30) day notice was sent to thirty-two (32) mineral owners by certified mail. Twenty-six (26) of the thirty-two (32) mineral owners in the proposed wellbore spacing unit had the notice delivered. We have not received any objections to such well location, proposed spacing unit or additional producing formation from the delivered notices. KMG has applied for a 502.b(1) variance for the six (6) owners we were unable to deliver to. KMG hereby respectfully requests approval of this boundary well.

If you have any questions or issues regarding this permit, please contact Cheryl Light at (720) 929-6461.

Very truly yours,

KERR-McGEE OIL AND GAS ONSHORE LP

A handwritten signature in blue ink that reads 'Cheryl Light'.

Cheryl Light
Senior Regulatory Analyst

NW. COR.
SEC. 13, T5N, R68W
FOUND 3 1/4" ALUM. CAP
L.S. NO. 36061

N 89°20'26" W 2755.29' (M)

N 89°20'03" W 2746.85' (M)

N. 1/4 COR.
SEC. 13, T5N, R68W
FOUND 2 1/2" ALUM. CAP
L.S. NO. 12374

N 00°15'16" E 2661.77' (M)

N 00°27'45" E 2654.24' (M)

S 89°37'35" W 10743' GRID
S 89°59'03" W TRUE
S 81°33'35" W MAGNETIC

HEEL LOCATION

FOLLEY NORTH #1
SURFACE LOCATION

13

N 89°29'48" W 2745.61' (M)

N 89°35'12" W 2748.62' (M)

W. 1/4 COR.
SEC. 13, T5N, R68W
FOUND 3 1/4" ALUM. CAP
L.S. NO. 34176

CENTER 1/4 COR.
SEC. 13, T5N, R68W
FOUND 2" ALUM. CAP
L.S. NO. 11989

S. 1/16 COR.
SEC. 13 & SEC. 14
T5N, R68W
FOUND 2 1/2" ALUM. CAP
L.S. NO. 37065

SW. 1/16 COR.
SEC. 13, T5N, R68W
SET 2 1/2" ALUM. CAP
P.L.S. NO. 38512

N 89°30'30" W 1369.95' (M)
CS. 1/16 COR.
SEC. 13, T5N, R68W
FOUND 3 1/4" ALUM. CAP
L.S. NO. 31159

SURFACE LOCATION: NAD 83
GROUND ELEVATION= 4922.7'
LATITUDE= 40.401795°
LONGITUDE= -104.946087°
LATITUDE= 40°24'06.460"
LONGITUDE= -104°56'45.914"
HEEL LOCATION: NAD 83
LATITUDE= 40.402956°
LONGITUDE= -104.949631°
LATITUDE= 40°24'10.641"
LONGITUDE= -104°56'58.672"
BOTTOM HOLE LOCATION: NAD 83
LATITUDE= 40.402940°
LONGITUDE= -104.988206°
LATITUDE= 40°24'10.584"
LONGITUDE= -104°59'17.543"

N 00°16'15" E 1320.02' (M)

N 00°29'34" E 1319.37' (M)

N 00°25'35" E 2642.18' (M)

N 00°14'31" E 1319.78' (M)

N 00°29'18" E 1319.44' (M)

SW. COR.
SEC. 13, T5N, R68W
FOUND 2" ALUM. CAP
L.S. NO. 11989

N 89°35'53" W 1368.87' (M)

N 89°26'08" W 1365.96' (M)

S. 1/4 COR.
SEC. 13, T5N, R68W
FOUND 3 1/4" ALUM. CAP
L.S. NO. 10855

N 89°31'00" W 2751.58' (M)

SE. COR.
SEC. 13, T5N, R68W
FOUND 3 1/4" ALUM. CAP
L.S. NO. 23520

NE. COR.
SEC. 13, T5N, R68W
FOUND 3 1/4" ALUM. CAP
ILLEGIBLE

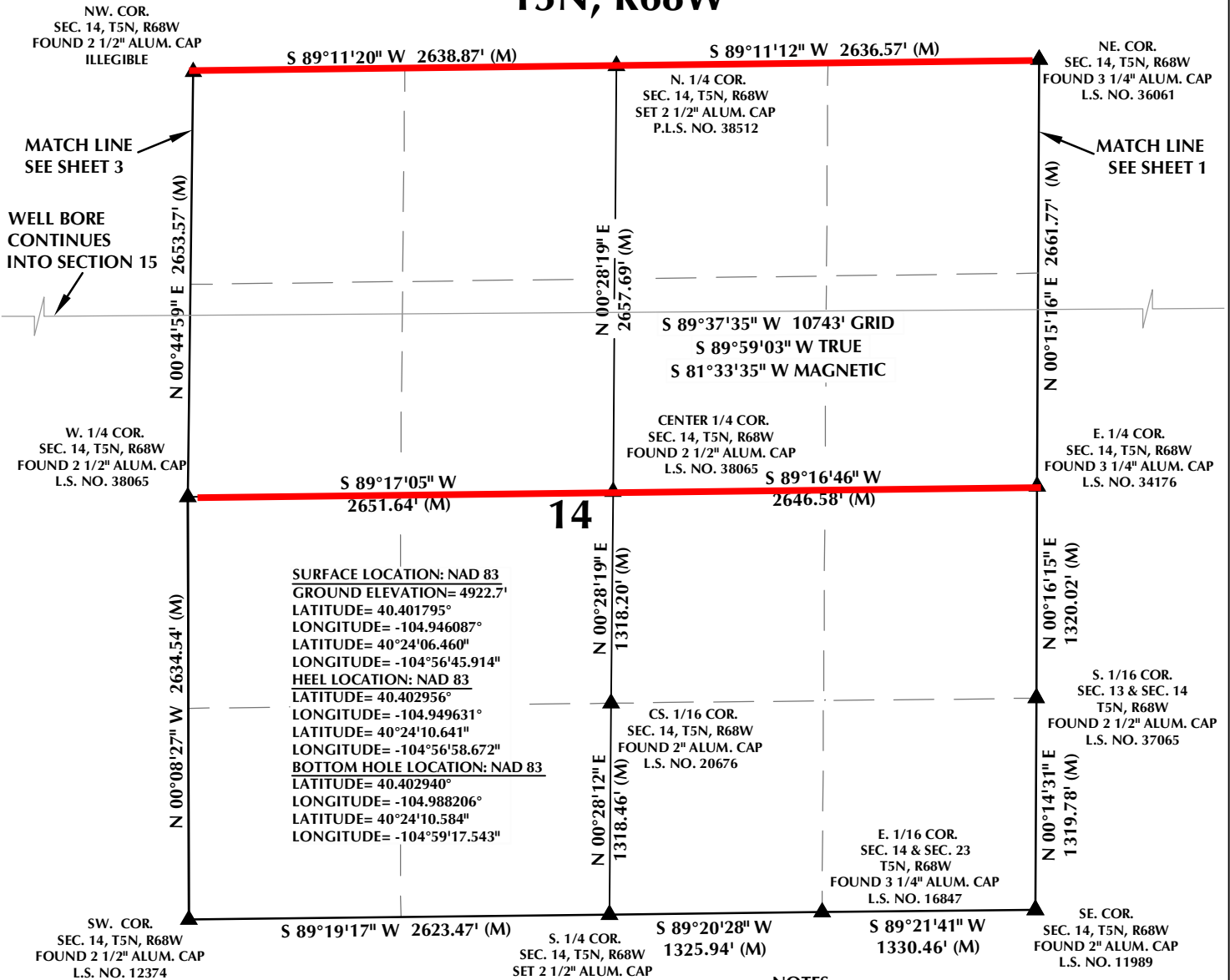
E. 1/4 COR.
SEC. 13, T5N, R68W
FOUND 3 1/4" ALUM. CAP
L.S. NO. 10855

W. 1/16 COR.
SEC. 13 & SEC. 24, T5N, R68W
FOUND 2" ALUM. CAP
L.S. NO. 11989

NOTES:
1. ▲ INDICATES SECTION CORNER

DRAFTED BY: LMO	CHECKED BY: RKF	SHEET NO: <div style="font-size: 2em; font-weight: bold; text-align: center;">1</div> 1 OF 3
DATE DRAFTED: 5/23/16	DATE SURVEYED: 5/12/16	
REVISED:	FILE NAME: 16-47	

T5N, R68W



CERTIFICATE OF SURVEYOR:

THIS IS TO CERTIFY THAT THE ABOVE PLAT WAS PREPARED FROM FIELD NOTES OF ACTUAL SURVEY MADE BY ME OR UNDER MY SUPERVISION AND THAT THE SAME ARE TRUE AND CORRECT TO THE BEST OF MY KNOWLEDGE AND BELIEF. THIS CERTIFICATE DOES NOT REPRESENT A LAND SURVEY PLAT OR IMPROVEMENT SURVEY PLAT AS DEFINED BY C.R.S. 38-51-302 AND CANNOT BE RELIED UPON TO DETERMINE OWNERSHIP.

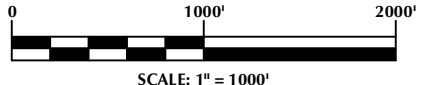
Randall K. French
RANDALL K. FRENCH
PROFESSIONAL LAND SURVEYOR
COLORADO REGISTRATION NUMBER 38512

NOTICE:
ACCORDING TO COLORADO STATE LAW YOU MUST COMMENCE ANY LEGAL ACTION BASED UPON ANY DEFECT IN THIS SURVEY WITHIN THREE YEARS AFTER YOU FIRST DISCOVER SUCH DEFECT. IN NO EVENT MAY ANY ACTION BASED UPON ANY DEFECT IN THIS SURVEY BE COMMENCED MORE THAN TEN YEARS FROM THE DATE ON THE CERTIFICATION SHOWN HEREON.

NOTE:
MAGNETIC NORTH IS CURRENT AS OF 5/12/2016.
MAGNETIC NORTH CHANGES WEST 0°06' PER YEAR.

NOTES:

- ▲ INDICATES SECTION CORNER
- INDICATES CALCULATED CORNER
- ELEVATION BASED ON NAVD88 (GEOID12B)
- BASIS OF BEARING DERIVED FROM COLORADO COORDINATE SYSTEM OF 1983 NORTH ZONE.
- ALL MEASURED DISTANCES ARE GRID.
- COMBINED SCALE FACTOR: .99972770 CALCULATED FROM THE N. 1/4 CORNER OF SECTION 13, T5N, R68W
- OPERATOR: ROB WILSON / PDOP = 1.3
- SEE ADDENDUM TO WELL LOCATION CERTIFICATE FOR EXISTING IMPROVEMENTS WITHIN 500' OF THE WELL PAD.
- WELL FOOTAGES ARE MEASURED AT RIGHT ANGLES TO THE SECTION LINES.
- THE BOTTOM OF HOLE BEARS S89°37'35"W, 10743' FROM THE HEEL LOCATION.



WELL PAD - FOLLEY NORTH #3

FOLLEY NORTH #1
WELL LOCATION CERTIFICATE
1889' FNL & 393' FEL SENE (SURFACE)
1484' FNL & 1386' FEL SWNE (HEEL)
LOCATED IN SECTION 13
1507' FNL & 1343' FEL SWNE (BOTTOM)
LOCATED IN SECTION 15
T5N, R68W, 6TH P.M.
LARIMER COUNTY, COLORADO

Kerr-McGee Oil &
Gas Onshore L.P.
1099 18th Street
Denver, Colorado 80202



CONSULTING, LLC

SHERIDAN OFFICE
1095 Saberton Avenue
Sheridan, Wyoming 82801
Phone 307-674-0609

LOVELAND OFFICE
1635 Foxtrail Drive, Suite 204
Loveland, Colorado 80538
Phone 970-776-4331

DRAFTED BY:	LMO	CHECKED BY:	RKF	SHEET NO:
DATE DRAFTED:	5/23/16	DATE SURVEYED:	5/12/16	2
REVISED:		FILE NAME:	16-47	2 OF 3

T5N, R68W

