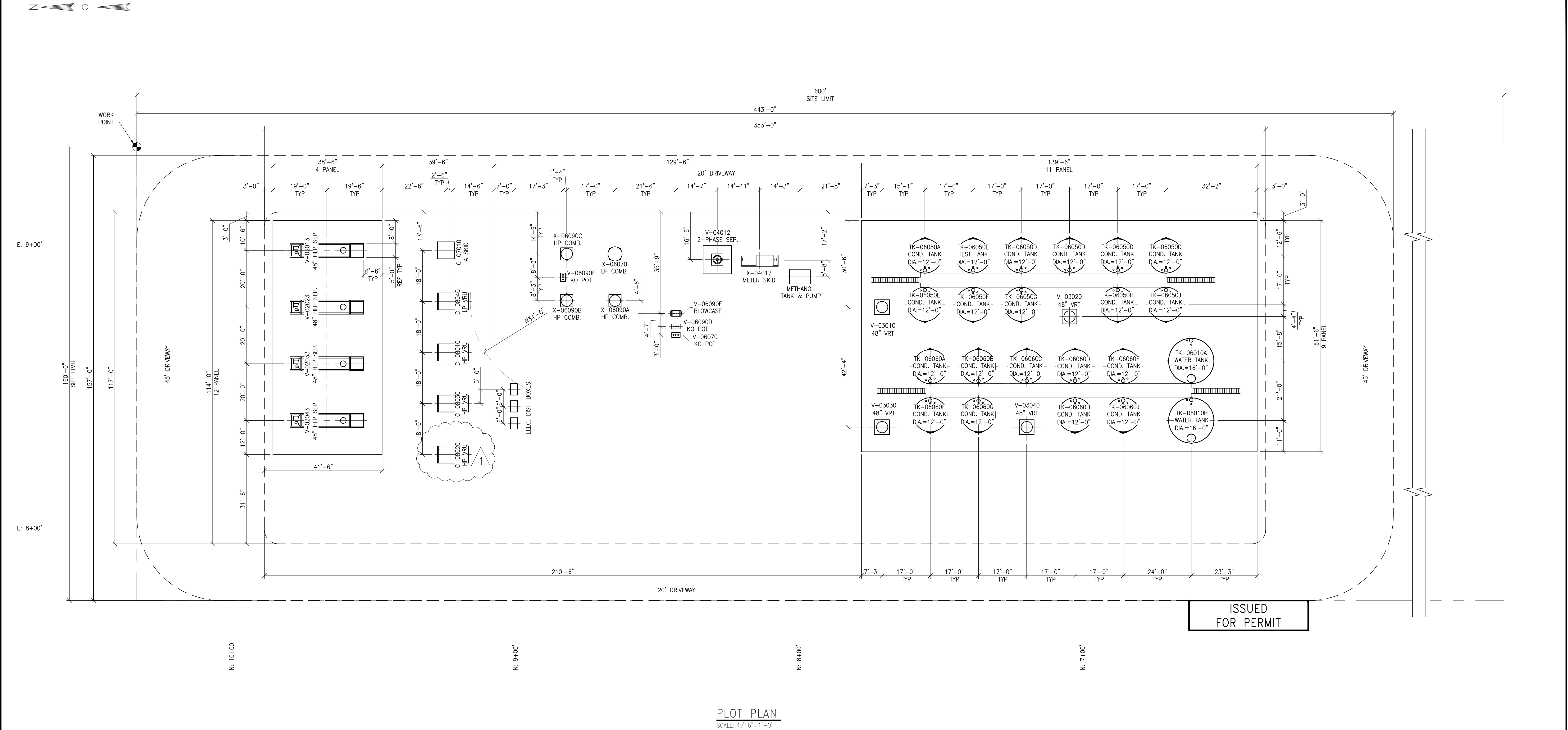





<p>NOTES:</p> <p>1. EQUIPMENT PLACEMENT IS APPROXIMATE AND SUBJECT TO MINOR MODIFICATION DUE TO SPECIFIC CIRCUMSTANCES.</p>	<p>DATA SOURCES:</p> <ul style="list-style-type: none">- AERIAL COURTESY OF ESRI, INC.- WATER WELLS COURTESY OF COLORADO DIVISION OF WATER RESOURCES	<p>609 CONSULTING, LLC</p> <p>LOVELAND OFFICE 1635 Foxtrail Drive, Suite 204 Loveland, Colorado 80538 Phone 970-776-4331</p> <p>SHERIDAN OFFICE 1095 Saberton Avenue Sheridan, Wyoming 82801 Phone 307-674-0609</p>	<p>Anadarko Petroleum Corporation 1099 18th Street Denver, CO 80202</p>	<p>SCALE: 1" = 200' DATE SURVEYED: 5/12/16 DATE: 5/23/16 DRAFTER: SRS REVISED: 7/7/16</p>	<p>FACILITY LAYOUT AERIAL FOLLEY NORTH #3 LOCATED IN SECTION 13, T5N, R68W, 6TH P.M. LARIMER COUNTY, COLORADO</p>
--	--	---	---	---	--

THIS DRAWING AND THE DESIGN IT COVERS ARE CONFIDENTIAL AND REMAIN THE PROPERTY OF ANADARKO PETROLEUM CORPORATION AND SHALL NOT BE DISCLOSED TO OTHERS OR REPRODUCED IN ANY MANNER OR USED FOR ANY PURPOSE WHATSOEVER EXCEPT BY WRITTEN PERMISSION BY THE OWNER.



NOTES:	REFERENCE DRAWINGS		REVISIONS						<div><div>FOLLEY NORTH</div></div>		PERMIT PLOT PLAN																
											PRODUCTION FACILITIES																
											W/ EQUIPMENT LOCATIONS																
					RE-ISSUED FOR PERMIT		RWG	7/07/16	JTK	7/07/16	DRAWN BY: GRT		CREATION DATE: 05/17/16		AFE No.: -												
					ISSUED FOR PERMIT		RWG	7/16/16	JTK	7/16/16	APPROVED: JTK		APPR. DATE: 05/17/16														
DWG. NO.		TITLE		NO.		DESCRIPTION		BY		DATE		CHK.		DATE		APPR.		DATE		SCALE: AS NOTED		DWG. No.: X22048-STOR-01-PP-2020		SHEET No. - OF -		