

# **US ROCKIES WATTENBERG PLANNING**

**WELD-NAD83-UTMFT13N  
5N-68W-13 Folley 8-13HZ Pad  
Folley North #1**

**Plan A**

**Plan: Permit Rev-1**

## **Standard Planning Report**

**20 May, 2016**



Azimuths to True North  
Magnetic North: 8.30°

Magnetic Field  
Strength: 52594.3snT  
Dip Angle: 66.85°  
Date: 5/17/2016  
Model: IGRF2010

SITE: 5N-68W-13 Folley 8-13HZ Pad

Well: Folley North #1  
Wellbore: Plan A  
Design: Permit Rev-1

#### FORMATION TOP DETAILS

TVDPath	MDPath	Formation
535.00	535.00	Fox Hills
3852.00	3940.68	Sussex
6712.00	6808.99	Sharon Springs
6759.00	6874.46	Niobrara
6874.00	7083.49	Nio B

#### WELL DETAILS: Folley North #1

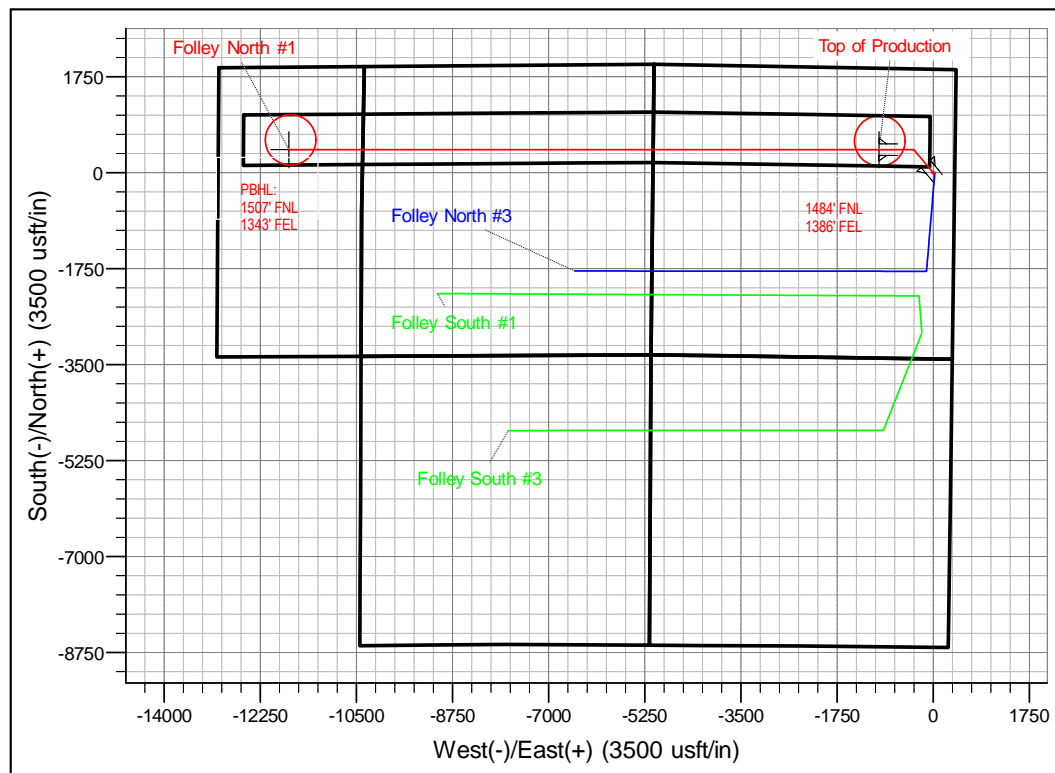
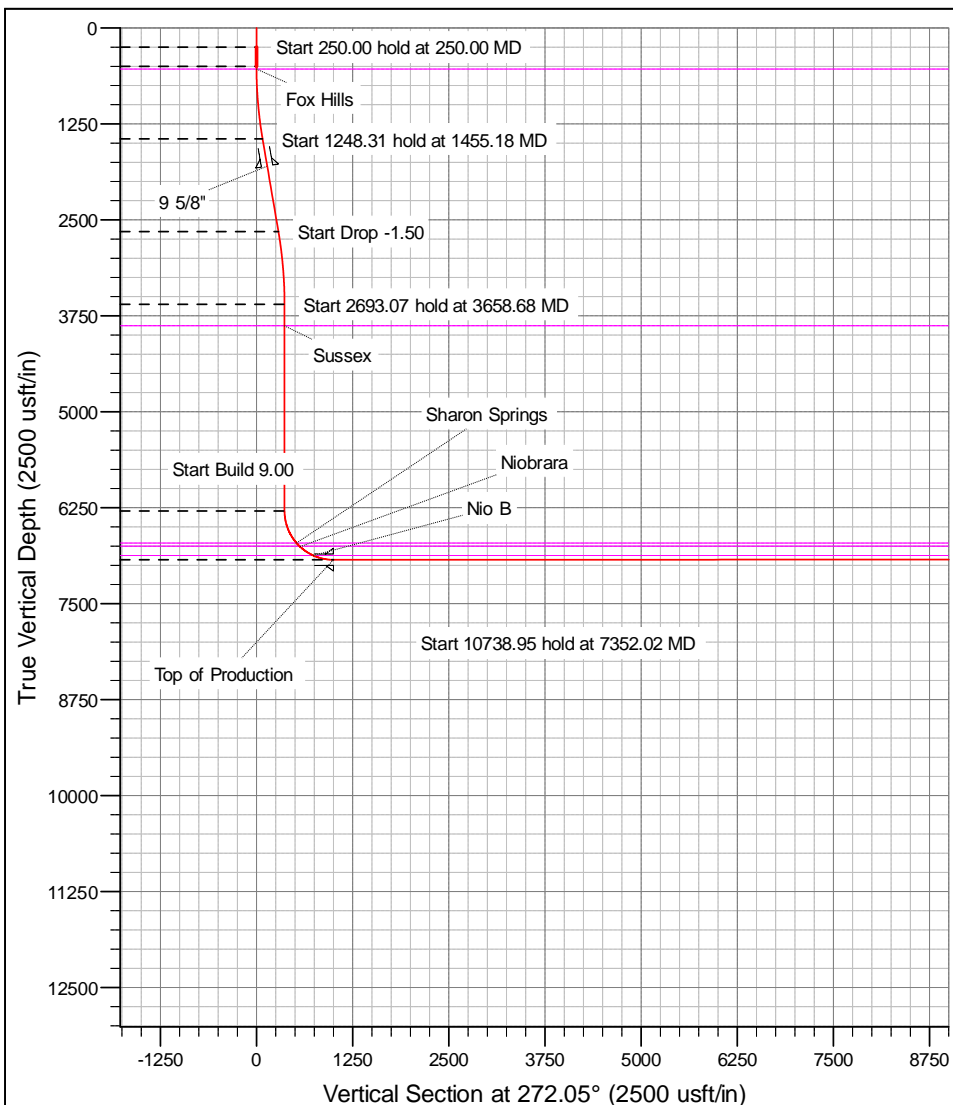
+N/-S	+E/-W	GL: 4923.00	RKB @ 4940.00usft (D Rig)	Longitude	Slot
0.00	0.00	Northing 14673052.94	Easting 1655426.19	Latitude 40.401795	Longitude -104.946087

#### SECTION DETAILS

MD	Inc	Azi	TVD	+N/-S	+E/-W	Dleg	Vsect
0.00	0.00	0.00	0.00	0.00	0.00	0.00	0.00
250.00	0.00	0.00	250.00	0.00	0.00	0.00	0.00
500.00	0.00	0.00	500.00	0.00	0.00	0.00	0.00
1455.18	14.33	320.18	1445.26	91.25	-76.08	1.50	79.30
2703.49	14.33	320.18	2654.74	328.51	-273.92	0.00	285.49
3658.68	0.00	0.00	3600.00	419.76	-350.00	1.50	364.79
6351.74	0.00	0.00	6293.07	419.76	-350.00	0.00	364.79
7352.02	90.03	270.00	6929.69	419.76	-986.90	9.00	1001.28
18090.97	90.03	270.00	6925.00	419.76	-11725.84	0.00	1733.35

#### DESIGN TARGET DETAILS

Name	TVD	+N/-S	+E/-W	Northing	Easting	Latitude	Longitude
FOLLEYNORTH #1_PBHL	6925.00		-11725.84	14673465.55	1643700.09	40.402940	-104.988206



# Anadarko

## Planning Report

<b>Database:</b>	PLANNING	<b>Local Co-ordinate Reference:</b>	Well Folley North #1
<b>Company:</b>	US ROCKIES WATTENBERG PLANNING	<b>TVD Reference:</b>	RKB @ 4940.00usft (D Rig)
<b>Project:</b>	WELD-NAD83-UTMFT13N	<b>MD Reference:</b>	RKB @ 4940.00usft (D Rig)
<b>Site:</b>	5N-68W-13 Folley 8-13HZ Pad	<b>North Reference:</b>	True
<b>Well:</b>	Folley North #1	<b>Survey Calculation Method:</b>	Minimum Curvature
<b>Wellbore:</b>	Plan A		
<b>Design:</b>	Permit Rev-1		

<b>Project</b>	WELD-NAD83-UTMFT13N		
<b>Map System:</b>	Universal Transverse Mercator (US Survey Feet)	<b>System Datum:</b>	Mean Sea Level
<b>Geo Datum:</b>	North American Datum 1983		
<b>Map Zone:</b>	Zone 13N (108 W to 102 W)		

Site						5N-68W-13 Folley 8-13HZ Pad											
Site Position:			Northing:			14,673,052.94 usft			Latitude:			40.401795					
From:			Lat/Long			Easting:			1,655,426.18 usft			Longitude:			-104.946087		
Position Uncertainty:			0.00 usft			Slot Radius:			13-3/16 "			Grid Convergence:			0.03		

Well	Folley North #1					
Well Position	+N/-S	0.00 usft	Northing:	14,673,052.94 usft	Latitude:	40.401795
	+E/-W	0.00 usft	Easting:	1,655,426.18 usft	Longitude:	-104.946087
Position Uncertainty		3.28 usft	Wellhead Elevation:	0.00 usft	Ground Level:	4,923.00 usft

<b>Wellbore</b>	Plan A				
<b>Magnetics</b>	<b>Model Name</b>	<b>Sample Date</b>	<b>Declination (°)</b>	<b>Dip Angle (°)</b>	<b>Field Strength (nT)</b>
	IGRF2010	5/17/2016	8.30	66.85	52,594

<b>Design</b>	Permit Rev-1			
<b>Audit Notes:</b>				
<b>Version:</b>	<b>Phase:</b>	PROTOTYPE	<b>Tie On Depth:</b>	0.00
<b>Vertical Section:</b>	<b>Depth From (TVD) (usft)</b>	<b>+N/-S (usft)</b>	<b>+E/-W (usft)</b>	<b>Direction (°)</b>
	0.00	0.00	0.00	272.05

<b>Plan Sections</b>										
Measured Depth (usft)	Inclination (°)	Azimuth (°)	Vertical Depth (usft)	+N/-S (usft)	+E/-W (usft)	Dogleg Rate (°/100usft)	Build Rate (°/100usft)	Turn Rate (°/100usft)	TFO (°)	Target
0.00	0.00	0.00	0.00	0.00	0.00	0.00	0.00	0.00	0.00	
250.00	0.00	0.00	250.00	0.00	0.00	0.00	0.00	0.00	0.00	
500.00	0.00	0.00	500.00	0.00	0.00	0.00	0.00	0.00	0.00	
1,455.18	14.33	320.18	1,445.26	91.25	-76.08	1.50	1.50	0.00	320.18	
2,703.49	14.33	320.18	2,654.74	328.51	-273.92	0.00	0.00	0.00	0.00	
3,658.68	0.00	0.00	3,600.00	419.76	-350.00	1.50	-1.50	0.00	180.00	
6,351.74	0.00	0.00	6,293.07	419.76	-350.00	0.00	0.00	0.00	0.00	
7,352.02	90.03	270.00	6,929.69	419.76	-986.90	9.00	9.00	0.00	270.00	
18,090.97	90.03	270.00	6,925.00	419.76	-11,725.84	0.00	0.00	0.00	0.00	FOLLEY NORTH #'

# Anadarko

## Planning Report

<b>Database:</b>	PLANNING	<b>Local Co-ordinate Reference:</b>	Well Folley North #1
<b>Company:</b>	US ROCKIES WATTENBERG PLANNING	<b>TVD Reference:</b>	RKB @ 4940.00usft (D Rig)
<b>Project:</b>	WELD-NAD83-UTMFT13N	<b>MD Reference:</b>	RKB @ 4940.00usft (D Rig)
<b>Site:</b>	5N-68W-13 Folley 8-13HZ Pad	<b>North Reference:</b>	True
<b>Well:</b>	Folley North #1	<b>Survey Calculation Method:</b>	Minimum Curvature
<b>Wellbore:</b>	Plan A		
<b>Design:</b>	Permit Rev-1		

Planned Survey									
Measured Depth (usft)	Inclination (°)	Azimuth (°)	Vertical Depth (usft)	+N/-S (usft)	+E/-W (usft)	Vertical Section (usft)	Dogleg Rate (°/100usft)	Build Rate (°/100usft)	Turn Rate (°/100usft)
0.00	0.00	0.00	0.00	0.00	0.00	0.00	0.00	0.00	0.00
100.00	0.00	0.00	100.00	0.00	0.00	0.00	0.00	0.00	0.00
200.00	0.00	0.00	200.00	0.00	0.00	0.00	0.00	0.00	0.00
250.00	0.00	0.00	250.00	0.00	0.00	0.00	0.00	0.00	0.00
300.00	0.00	0.00	300.00	0.00	0.00	0.00	0.00	0.00	0.00
400.00	0.00	0.00	400.00	0.00	0.00	0.00	0.00	0.00	0.00
500.00	0.00	0.00	500.00	0.00	0.00	0.00	0.00	0.00	0.00
535.00	0.53	320.18	535.00	0.12	-0.10	0.11	1.50	1.50	0.00
<b>Fox Hills</b>									
600.00	1.50	320.18	599.99	1.01	-0.84	0.87	1.50	1.50	0.00
700.00	3.00	320.18	699.91	4.02	-3.35	3.49	1.50	1.50	0.00
800.00	4.50	320.18	799.69	9.04	-7.54	7.86	1.50	1.50	0.00
900.00	6.00	320.18	899.27	16.07	-13.40	13.97	1.50	1.50	0.00
1,000.00	7.50	320.18	998.57	25.10	-20.93	21.81	1.50	1.50	0.00
1,100.00	9.00	320.18	1,097.54	36.12	-30.12	31.39	1.50	1.50	0.00
1,200.00	10.50	320.18	1,196.09	49.13	-40.96	42.69	1.50	1.50	0.00
1,300.00	12.00	320.18	1,294.16	64.11	-53.45	55.71	1.50	1.50	0.00
1,400.00	13.50	320.18	1,391.70	81.06	-67.59	70.44	1.50	1.50	0.00
1,455.18	14.33	320.18	1,445.26	91.25	-76.08	79.30	1.50	1.50	0.00
1,500.00	14.33	320.18	1,488.68	99.77	-83.19	86.70	0.00	0.00	0.00
1,600.00	14.33	320.18	1,585.57	118.77	-99.04	103.22	0.00	0.00	0.00
1,700.00	14.33	320.18	1,682.46	137.78	-114.88	119.74	0.00	0.00	0.00
1,800.00	14.33	320.18	1,779.35	156.79	-130.73	136.26	0.00	0.00	0.00
1,821.31	14.33	320.18	1,800.00	160.84	-134.11	139.78	0.00	0.00	0.00
<b>9 5/8"</b>									
1,900.00	14.33	320.18	1,876.24	175.79	-146.58	152.77	0.00	0.00	0.00
2,000.00	14.33	320.18	1,973.13	194.80	-162.43	169.29	0.00	0.00	0.00
2,100.00	14.33	320.18	2,070.02	213.81	-178.27	185.81	0.00	0.00	0.00
2,200.00	14.33	320.18	2,166.91	232.81	-194.12	202.33	0.00	0.00	0.00
2,300.00	14.33	320.18	2,263.80	251.82	-209.97	218.84	0.00	0.00	0.00
2,400.00	14.33	320.18	2,360.69	270.83	-225.82	235.36	0.00	0.00	0.00
2,500.00	14.33	320.18	2,457.58	289.83	-241.67	251.88	0.00	0.00	0.00
2,600.00	14.33	320.18	2,554.47	308.84	-257.51	268.40	0.00	0.00	0.00
2,700.00	14.33	320.18	2,651.36	327.85	-273.36	284.92	0.00	0.00	0.00
2,703.49	14.33	320.18	2,654.74	328.51	-273.92	285.49	0.00	0.00	0.00
2,800.00	12.88	320.18	2,748.54	345.94	-288.45	300.64	1.50	-1.50	0.00
2,900.00	11.38	320.18	2,846.30	362.08	-301.91	314.67	1.50	-1.50	0.00
3,000.00	9.88	320.18	2,944.58	376.25	-313.72	326.98	1.50	-1.50	0.00
3,100.00	8.38	320.18	3,043.31	388.44	-323.88	337.57	1.50	-1.50	0.00
3,200.00	6.88	320.18	3,142.43	398.63	-332.39	346.43	1.50	-1.50	0.00
3,300.00	5.38	320.18	3,241.85	406.84	-339.22	353.56	1.50	-1.50	0.00
3,400.00	3.88	320.18	3,341.52	413.04	-344.39	358.95	1.50	-1.50	0.00
3,500.00	2.38	320.18	3,441.37	417.23	-347.89	362.59	1.50	-1.50	0.00
3,600.00	0.88	320.18	3,541.33	419.41	-349.71	364.49	1.50	-1.50	0.00
3,658.68	0.00	0.00	3,600.00	419.76	-350.00	364.79	1.50	-1.50	0.00
3,700.00	0.00	0.00	3,641.32	419.76	-350.00	364.79	0.00	0.00	0.00
3,800.00	0.00	0.00	3,741.32	419.76	-350.00	364.79	0.00	0.00	0.00
3,900.00	0.00	0.00	3,841.32	419.76	-350.00	364.79	0.00	0.00	0.00
3,940.68	0.00	0.00	3,882.00	419.76	-350.00	364.79	0.00	0.00	0.00
<b>Sussex</b>									
4,000.00	0.00	0.00	3,941.32	419.76	-350.00	364.79	0.00	0.00	0.00
4,100.00	0.00	0.00	4,041.32	419.76	-350.00	364.79	0.00	0.00	0.00
4,200.00	0.00	0.00	4,141.32	419.76	-350.00	364.79	0.00	0.00	0.00

# Anadarko

## Planning Report

<b>Database:</b>	PLANNING	<b>Local Co-ordinate Reference:</b>	Well Folley North #1
<b>Company:</b>	US ROCKIES WATTENBERG PLANNING	<b>TVD Reference:</b>	RKB @ 4940.00usft (D Rig)
<b>Project:</b>	WELD-NAD83-UTMFT13N	<b>MD Reference:</b>	RKB @ 4940.00usft (D Rig)
<b>Site:</b>	5N-68W-13 Folley 8-13HZ Pad	<b>North Reference:</b>	True
<b>Well:</b>	Folley North #1	<b>Survey Calculation Method:</b>	Minimum Curvature
<b>Wellbore:</b>	Plan A		
<b>Design:</b>	Permit Rev-1		

Planned Survey									
Measured Depth (usft)	Inclination (°)	Azimuth (°)	Vertical Depth (usft)	+N/-S (usft)	+E/-W (usft)	Vertical Section (usft)	Dogleg Rate (°/100usft)	Build Rate (°/100usft)	Turn Rate (°/100usft)
4,300.00	0.00	0.00	4,241.32	419.76	-350.00	364.79	0.00	0.00	0.00
4,400.00	0.00	0.00	4,341.32	419.76	-350.00	364.79	0.00	0.00	0.00
4,500.00	0.00	0.00	4,441.32	419.76	-350.00	364.79	0.00	0.00	0.00
4,600.00	0.00	0.00	4,541.32	419.76	-350.00	364.79	0.00	0.00	0.00
4,700.00	0.00	0.00	4,641.32	419.76	-350.00	364.79	0.00	0.00	0.00
4,800.00	0.00	0.00	4,741.32	419.76	-350.00	364.79	0.00	0.00	0.00
4,900.00	0.00	0.00	4,841.32	419.76	-350.00	364.79	0.00	0.00	0.00
5,000.00	0.00	0.00	4,941.32	419.76	-350.00	364.79	0.00	0.00	0.00
5,100.00	0.00	0.00	5,041.32	419.76	-350.00	364.79	0.00	0.00	0.00
5,200.00	0.00	0.00	5,141.32	419.76	-350.00	364.79	0.00	0.00	0.00
5,300.00	0.00	0.00	5,241.32	419.76	-350.00	364.79	0.00	0.00	0.00
5,400.00	0.00	0.00	5,341.32	419.76	-350.00	364.79	0.00	0.00	0.00
5,500.00	0.00	0.00	5,441.32	419.76	-350.00	364.79	0.00	0.00	0.00
5,600.00	0.00	0.00	5,541.32	419.76	-350.00	364.79	0.00	0.00	0.00
5,700.00	0.00	0.00	5,641.32	419.76	-350.00	364.79	0.00	0.00	0.00
5,800.00	0.00	0.00	5,741.32	419.76	-350.00	364.79	0.00	0.00	0.00
5,900.00	0.00	0.00	5,841.32	419.76	-350.00	364.79	0.00	0.00	0.00
6,000.00	0.00	0.00	5,941.32	419.76	-350.00	364.79	0.00	0.00	0.00
6,100.00	0.00	0.00	6,041.32	419.76	-350.00	364.79	0.00	0.00	0.00
6,200.00	0.00	0.00	6,141.32	419.76	-350.00	364.79	0.00	0.00	0.00
6,300.00	0.00	0.00	6,241.32	419.76	-350.00	364.79	0.00	0.00	0.00
6,351.74	0.00	0.00	6,293.07	419.76	-350.00	364.79	0.00	0.00	0.00
6,400.00	4.34	270.00	6,341.28	419.76	-351.83	366.62	9.00	9.00	0.00
6,500.00	13.34	270.00	6,439.99	419.76	-367.19	381.97	9.00	9.00	0.00
6,600.00	22.34	270.00	6,535.08	419.76	-397.80	412.56	9.00	9.00	0.00
6,700.00	31.34	270.00	6,624.21	419.76	-442.90	457.64	9.00	9.00	0.00
6,800.00	40.34	270.00	6,705.19	419.76	-501.40	516.10	9.00	9.00	0.00
6,808.99	41.15	270.00	6,712.00	419.76	-507.27	521.96	9.00	9.00	0.00
<b>Sharon Springs</b>									
6,874.46	47.04	270.00	6,759.00	419.76	-552.81	567.47	9.00	9.00	0.00
<b>Niobrara</b>									
6,900.00	49.34	270.00	6,776.02	419.76	-571.85	586.50	9.00	9.00	0.00
7,000.00	58.34	270.00	6,834.96	419.76	-652.50	667.10	9.00	9.00	0.00
7,083.49	65.86	270.00	6,874.00	419.76	-726.23	740.79	9.00	9.00	0.00
<b>Nio B</b>									
7,100.00	67.34	270.00	6,880.56	419.76	-741.39	755.93	9.00	9.00	0.00
7,200.00	76.34	270.00	6,911.69	419.76	-836.31	850.79	9.00	9.00	0.00
7,300.00	85.34	270.00	6,927.58	419.76	-934.94	949.35	9.00	9.00	0.00
7,352.02	90.03	270.00	6,929.69	419.76	-986.90	1,001.28	9.00	9.00	0.00
<b>Top of Production - FOLLEY NORTH #1_PHL (Folley North #1 Plan A Permit</b>									
7,400.00	90.03	270.00	6,929.66	419.76	-1,034.88	1,049.23	0.00	0.00	0.00
7,500.00	90.03	270.00	6,929.62	419.76	-1,134.88	1,149.17	0.00	0.00	0.00
7,600.00	90.03	270.00	6,929.58	419.76	-1,234.88	1,249.11	0.00	0.00	0.00
7,700.00	90.03	270.00	6,929.53	419.76	-1,334.88	1,349.04	0.00	0.00	0.00
7,800.00	90.03	270.00	6,929.49	419.76	-1,434.88	1,448.98	0.00	0.00	0.00
7,900.00	90.03	270.00	6,929.45	419.76	-1,534.88	1,548.91	0.00	0.00	0.00
8,000.00	90.03	270.00	6,929.40	419.76	-1,634.88	1,648.85	0.00	0.00	0.00
8,100.00	90.03	270.00	6,929.36	419.76	-1,734.88	1,748.78	0.00	0.00	0.00
8,200.00	90.03	270.00	6,929.32	419.76	-1,834.88	1,848.72	0.00	0.00	0.00
8,300.00	90.03	270.00	6,929.27	419.76	-1,934.88	1,948.66	0.00	0.00	0.00
8,400.00	90.03	270.00	6,929.23	419.76	-2,034.88	2,048.59	0.00	0.00	0.00
8,500.00	90.03	270.00	6,929.19	419.76	-2,134.88	2,148.53	0.00	0.00	0.00
8,600.00	90.03	270.00	6,929.14	419.76	-2,234.88	2,248.46	0.00	0.00	0.00
8,700.00	90.03	270.00	6,929.10	419.76	-2,334.88	2,348.40	0.00	0.00	0.00

# Anadarko

## Planning Report

<b>Database:</b>	PLANNING	<b>Local Co-ordinate Reference:</b>	Well Folley North #1
<b>Company:</b>	US ROCKIES WATTENBERG PLANNING	<b>TVD Reference:</b>	RKB @ 4940.00usft (D Rig)
<b>Project:</b>	WELD-NAD83-UTMFT13N	<b>MD Reference:</b>	RKB @ 4940.00usft (D Rig)
<b>Site:</b>	5N-68W-13 Folley 8-13HZ Pad	<b>North Reference:</b>	True
<b>Well:</b>	Folley North #1	<b>Survey Calculation Method:</b>	Minimum Curvature
<b>Wellbore:</b>	Plan A		
<b>Design:</b>	Permit Rev-1		

Planned Survey									
Measured Depth (usft)	Inclination (°)	Azimuth (°)	Vertical Depth (usft)	+N/-S (usft)	+E/-W (usft)	Vertical Section (usft)	Dogleg Rate (°/100usft)	Build Rate (°/100usft)	Turn Rate (°/100usft)
8,800.00	90.03	270.00	6,929.05	419.76	-2,434.88	2,448.34	0.00	0.00	0.00
8,900.00	90.03	270.00	6,929.01	419.76	-2,534.88	2,548.27	0.00	0.00	0.00
9,000.00	90.03	270.00	6,928.97	419.76	-2,634.88	2,648.21	0.00	0.00	0.00
9,100.00	90.03	270.00	6,928.92	419.76	-2,734.88	2,748.14	0.00	0.00	0.00
9,200.00	90.03	270.00	6,928.88	419.76	-2,834.88	2,848.08	0.00	0.00	0.00
9,300.00	90.03	270.00	6,928.84	419.76	-2,934.88	2,948.02	0.00	0.00	0.00
9,400.00	90.03	270.00	6,928.79	419.76	-3,034.88	3,047.95	0.00	0.00	0.00
9,500.00	90.03	270.00	6,928.75	419.76	-3,134.88	3,147.89	0.00	0.00	0.00
9,600.00	90.03	270.00	6,928.71	419.76	-3,234.88	3,247.82	0.00	0.00	0.00
9,700.00	90.03	270.00	6,928.66	419.76	-3,334.88	3,347.76	0.00	0.00	0.00
9,800.00	90.03	270.00	6,928.62	419.76	-3,434.88	3,447.70	0.00	0.00	0.00
9,900.00	90.03	270.00	6,928.57	419.76	-3,534.88	3,547.63	0.00	0.00	0.00
10,000.00	90.03	270.00	6,928.53	419.76	-3,634.88	3,647.57	0.00	0.00	0.00
10,100.00	90.03	270.00	6,928.49	419.76	-3,734.88	3,747.50	0.00	0.00	0.00
10,200.00	90.03	270.00	6,928.44	419.76	-3,834.88	3,847.44	0.00	0.00	0.00
10,300.00	90.03	270.00	6,928.40	419.76	-3,934.88	3,947.38	0.00	0.00	0.00
10,400.00	90.03	270.00	6,928.36	419.76	-4,034.88	4,047.31	0.00	0.00	0.00
10,500.00	90.03	270.00	6,928.31	419.76	-4,134.88	4,147.25	0.00	0.00	0.00
10,600.00	90.03	270.00	6,928.27	419.76	-4,234.88	4,247.18	0.00	0.00	0.00
10,700.00	90.03	270.00	6,928.23	419.76	-4,334.88	4,347.12	0.00	0.00	0.00
10,800.00	90.03	270.00	6,928.18	419.76	-4,434.88	4,447.06	0.00	0.00	0.00
10,900.00	90.03	270.00	6,928.14	419.76	-4,534.88	4,546.99	0.00	0.00	0.00
11,000.00	90.03	270.00	6,928.09	419.76	-4,634.88	4,646.93	0.00	0.00	0.00
11,100.00	90.03	270.00	6,928.05	419.76	-4,734.88	4,746.86	0.00	0.00	0.00
11,200.00	90.03	270.00	6,928.01	419.76	-4,834.88	4,846.80	0.00	0.00	0.00
11,300.00	90.03	270.00	6,927.96	419.76	-4,934.88	4,946.74	0.00	0.00	0.00
11,400.00	90.03	270.00	6,927.92	419.76	-5,034.88	5,046.67	0.00	0.00	0.00
11,500.00	90.03	270.00	6,927.88	419.76	-5,134.88	5,146.61	0.00	0.00	0.00
11,600.00	90.03	270.00	6,927.83	419.76	-5,234.88	5,246.54	0.00	0.00	0.00
11,700.00	90.03	270.00	6,927.79	419.76	-5,334.88	5,346.48	0.00	0.00	0.00
11,800.00	90.03	270.00	6,927.75	419.76	-5,434.88	5,446.42	0.00	0.00	0.00
11,900.00	90.03	270.00	6,927.70	419.76	-5,534.88	5,546.35	0.00	0.00	0.00
12,000.00	90.03	270.00	6,927.66	419.76	-5,634.88	5,646.29	0.00	0.00	0.00
12,100.00	90.03	270.00	6,927.61	419.76	-5,734.88	5,746.22	0.00	0.00	0.00
12,200.00	90.03	270.00	6,927.57	419.76	-5,834.88	5,846.16	0.00	0.00	0.00
12,300.00	90.03	270.00	6,927.53	419.76	-5,934.88	5,946.10	0.00	0.00	0.00
12,400.00	90.03	270.00	6,927.48	419.76	-6,034.88	6,046.03	0.00	0.00	0.00
12,500.00	90.03	270.00	6,927.44	419.76	-6,134.88	6,145.97	0.00	0.00	0.00
12,600.00	90.03	270.00	6,927.40	419.76	-6,234.88	6,245.90	0.00	0.00	0.00
12,700.00	90.03	270.00	6,927.35	419.76	-6,334.88	6,345.84	0.00	0.00	0.00
12,800.00	90.03	270.00	6,927.31	419.76	-6,434.88	6,445.78	0.00	0.00	0.00
12,900.00	90.03	270.00	6,927.27	419.76	-6,534.88	6,545.71	0.00	0.00	0.00
13,000.00	90.03	270.00	6,927.22	419.76	-6,634.88	6,645.65	0.00	0.00	0.00
13,100.00	90.03	270.00	6,927.18	419.76	-6,734.88	6,745.58	0.00	0.00	0.00
13,200.00	90.03	270.00	6,927.13	419.76	-6,834.88	6,845.52	0.00	0.00	0.00
13,300.00	90.03	270.00	6,927.09	419.76	-6,934.88	6,945.46	0.00	0.00	0.00
13,400.00	90.03	270.00	6,927.05	419.76	-7,034.88	7,045.39	0.00	0.00	0.00
13,500.00	90.03	270.00	6,927.00	419.76	-7,134.88	7,145.33	0.00	0.00	0.00
13,600.00	90.03	270.00	6,926.96	419.76	-7,234.88	7,245.26	0.00	0.00	0.00
13,700.00	90.03	270.00	6,926.92	419.76	-7,334.88	7,345.20	0.00	0.00	0.00
13,800.00	90.03	270.00	6,926.87	419.76	-7,434.88	7,445.14	0.00	0.00	0.00
13,900.00	90.03	270.00	6,926.83	419.76	-7,534.88	7,545.07	0.00	0.00	0.00
14,000.00	90.03	270.00	6,926.79	419.76	-7,634.88	7,645.01	0.00	0.00	0.00
14,100.00	90.03	270.00	6,926.74	419.76	-7,734.88	7,744.94	0.00	0.00	0.00

# Anadarko

## Planning Report

<b>Database:</b>	PLANNING	<b>Local Co-ordinate Reference:</b>	Well Folley North #1
<b>Company:</b>	US ROCKIES WATTENBERG PLANNING	<b>TVD Reference:</b>	RKB @ 4940.00usft (D Rig)
<b>Project:</b>	WELD-NAD83-UTMFT13N	<b>MD Reference:</b>	RKB @ 4940.00usft (D Rig)
<b>Site:</b>	5N-68W-13 Folley 8-13HZ Pad	<b>North Reference:</b>	True
<b>Well:</b>	Folley North #1	<b>Survey Calculation Method:</b>	Minimum Curvature
<b>Wellbore:</b>	Plan A		
<b>Design:</b>	Permit Rev-1		

Planned Survey									
Measured Depth (usft)	Inclination (°)	Azimuth (°)	Vertical Depth (usft)	+N/-S (usft)	+E/-W (usft)	Vertical Section (usft)	Dogleg Rate (°/100usft)	Build Rate (°/100usft)	Turn Rate (°/100usft)
14,200.00	90.03	270.00	6,926.70	419.76	-7,834.88	7,844.88	0.00	0.00	0.00
14,300.00	90.03	270.00	6,926.65	419.76	-7,934.88	7,944.82	0.00	0.00	0.00
14,400.00	90.03	270.00	6,926.61	419.76	-8,034.88	8,044.75	0.00	0.00	0.00
14,500.00	90.03	270.00	6,926.57	419.76	-8,134.88	8,144.69	0.00	0.00	0.00
14,600.00	90.03	270.00	6,926.52	419.76	-8,234.88	8,244.62	0.00	0.00	0.00
14,700.00	90.03	270.00	6,926.48	419.76	-8,334.88	8,344.56	0.00	0.00	0.00
14,800.00	90.03	270.00	6,926.44	419.76	-8,434.88	8,444.50	0.00	0.00	0.00
14,900.00	90.03	270.00	6,926.39	419.76	-8,534.88	8,544.43	0.00	0.00	0.00
15,000.00	90.03	270.00	6,926.35	419.76	-8,634.88	8,644.37	0.00	0.00	0.00
15,100.00	90.03	270.00	6,926.31	419.76	-8,734.88	8,744.30	0.00	0.00	0.00
15,200.00	90.03	270.00	6,926.26	419.76	-8,834.88	8,844.24	0.00	0.00	0.00
15,300.00	90.03	270.00	6,926.22	419.76	-8,934.88	8,944.18	0.00	0.00	0.00
15,400.00	90.03	270.00	6,926.17	419.76	-9,034.88	9,044.11	0.00	0.00	0.00
15,500.00	90.03	270.00	6,926.13	419.76	-9,134.88	9,144.05	0.00	0.00	0.00
15,600.00	90.03	270.00	6,926.09	419.76	-9,234.88	9,243.98	0.00	0.00	0.00
15,700.00	90.03	270.00	6,926.04	419.76	-9,334.88	9,343.92	0.00	0.00	0.00
15,800.00	90.03	270.00	6,926.00	419.76	-9,434.88	9,443.86	0.00	0.00	0.00
15,900.00	90.03	270.00	6,925.96	419.76	-9,534.88	9,543.79	0.00	0.00	0.00
16,000.00	90.03	270.00	6,925.91	419.76	-9,634.88	9,643.73	0.00	0.00	0.00
16,100.00	90.03	270.00	6,925.87	419.76	-9,734.88	9,743.66	0.00	0.00	0.00
16,200.00	90.03	270.00	6,925.83	419.76	-9,834.88	9,843.60	0.00	0.00	0.00
16,300.00	90.03	270.00	6,925.78	419.76	-9,934.88	9,943.54	0.00	0.00	0.00
16,400.00	90.03	270.00	6,925.74	419.76	-10,034.88	10,043.47	0.00	0.00	0.00
16,500.00	90.03	270.00	6,925.69	419.76	-10,134.88	10,143.41	0.00	0.00	0.00
16,600.00	90.03	270.00	6,925.65	419.76	-10,234.88	10,243.34	0.00	0.00	0.00
16,700.00	90.03	270.00	6,925.61	419.76	-10,334.88	10,343.28	0.00	0.00	0.00
16,800.00	90.03	270.00	6,925.56	419.76	-10,434.88	10,443.22	0.00	0.00	0.00
16,900.00	90.03	270.00	6,925.52	419.76	-10,534.88	10,543.15	0.00	0.00	0.00
17,000.00	90.03	270.00	6,925.48	419.76	-10,634.88	10,643.09	0.00	0.00	0.00
17,100.00	90.03	270.00	6,925.43	419.76	-10,734.88	10,743.02	0.00	0.00	0.00
17,200.00	90.03	270.00	6,925.39	419.76	-10,834.88	10,842.96	0.00	0.00	0.00
17,300.00	90.03	270.00	6,925.35	419.76	-10,934.88	10,942.90	0.00	0.00	0.00
17,400.00	90.03	270.00	6,925.30	419.76	-11,034.88	11,042.83	0.00	0.00	0.00
17,500.00	90.03	270.00	6,925.26	419.76	-11,134.88	11,142.77	0.00	0.00	0.00
17,600.00	90.03	270.00	6,925.21	419.76	-11,234.88	11,242.70	0.00	0.00	0.00
17,700.00	90.03	270.00	6,925.17	419.76	-11,334.88	11,342.64	0.00	0.00	0.00
17,800.00	90.03	270.00	6,925.13	419.76	-11,434.88	11,442.57	0.00	0.00	0.00
17,900.00	90.03	270.00	6,925.08	419.76	-11,534.88	11,542.51	0.00	0.00	0.00
18,000.00	90.03	270.00	6,925.04	419.76	-11,634.88	11,642.45	0.00	0.00	0.00
18,090.97	90.03	270.00	6,925.00	419.76	-11,725.84	11,733.35	0.00	0.00	0.00
FOLLEY NORTH #1_PBHL									

# Anadarko

## Planning Report

<b>Database:</b>	PLANNING	<b>Local Co-ordinate Reference:</b>	Well Folley North #1
<b>Company:</b>	US ROCKIES WATTENBERG PLANNING	<b>TVD Reference:</b>	RKB @ 4940.00usft (D Rig)
<b>Project:</b>	WELD-NAD83-UTMFT13N	<b>MD Reference:</b>	RKB @ 4940.00usft (D Rig)
<b>Site:</b>	5N-68W-13 Folley 8-13HZ Pad	<b>North Reference:</b>	True
<b>Well:</b>	Folley North #1	<b>Survey Calculation Method:</b>	Minimum Curvature
<b>Wellbore:</b>	Plan A		
<b>Design:</b>	Permit Rev-1		

Design Targets									
Target Name									
- hit/miss target	Dip Angle	Dip Dir.	TVD	+N/-S	+E/-W	Northing	Easting	Latitude	Longitude
- Shape	(°)	(°)	(usft)	(usft)	(usft)	(usft)	(usft)		
FOLLEY NORTH #1_I	0.00	0.00	6,925.00	419.76	-11,725.84	14,673,465.55	1,643,700.09	40.402940	-104.988206
- plan hits target center									
- Point									
FOLLEY NORTH #1_I	0.00	0.00	6,929.69	419.76	-986.90	14,673,472.10	1,654,439.03	40.402948	-104.949632
- plan hits target center									
- Point									

Casing Points					
Measured Depth	Vertical Depth			Casing Diameter	Hole Diameter
(usft)	(usft)	Name		(")	(")
1,821.31	1,800.00	9 5/8"		9-5/8	13-1/2
7,352.02	6,929.69	Top of Production		5-1/2	8-1/2

Formations						
Measured Depth	Vertical Depth				Dip	Dip Direction
(usft)	(usft)	Name		Lithology	(°)	(°)
535.00	535.00	Fox Hills				
3,940.68	3,882.00	Sussex				
6,808.99	6,712.00	Sharon Springs				
6,874.46	6,759.00	Niobrara				
7,083.49	6,874.00	Nio B				