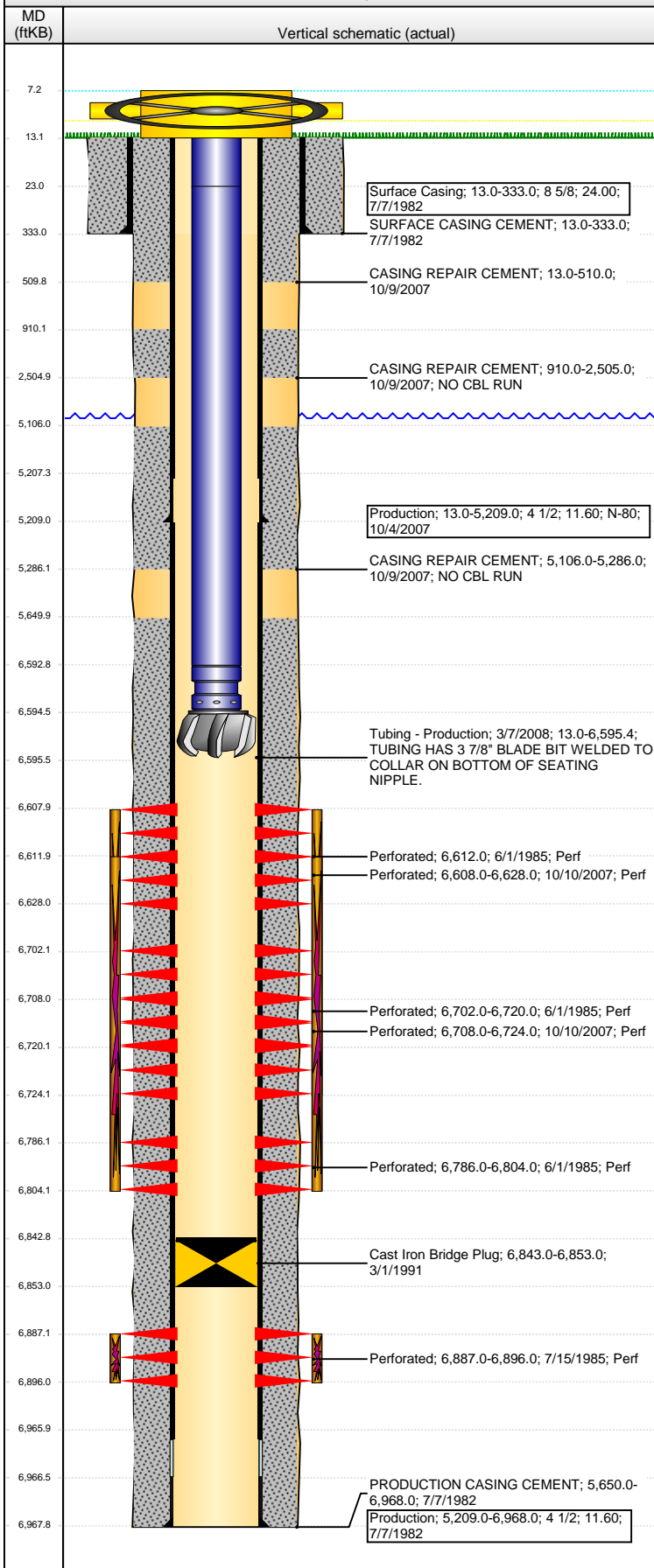


**Well Name: MURPHY 1**

VERTICAL - ORIGINAL HOLE, 7/6/2016 4:04:09 PM



## Well Header

API	Business Unit	District	Well Config
05-123-10745	DJ BASIN	15	VERTICAL
Original KB Elevation (ft)	KB - GL / MSL (ftKB)	Spud Date	P & A Date
4,676	13.00	6/29/1982	

## Comment

## Directions To Well

WCR 55 & WCR 48, E 0.4, NW 0.2 INTO

## Congressional Location

Quarter 1	Quarter 2	Quarter 3	Quarter 4	Section	Township	Twnshp N...	Range	Rng E/W Dir
		SE	SW	3	4	N	64	W

## Bottom Hole Location

North-South Distance (ft)	From N or S Line	East-West Distance (ft)	From E or W Line

## Plug Back Total Depths

Date	Depth (ftKB)	Method	Com
7/7/1982	6,946.0		
3/1/1991	6,836.0	TAG	
10/10/2006	6,843.0	TAG	CLEANED OUT SAND PLUG TO 6843
3/7/2008	6,843.0	TAG	LAST CLEANOUT

## Wellbore Sections

Section Des	Size (in)	Act Top, MD (ftKB)	Act Btm, MD (ftKB)
SURFACE	12 1/4	13	333
PRODUCTION	7 7/8	333	6,968

## Zone Statuses

Zone Name	Status Date	Status	Fluid Type	Job	Prod Method
CODELL	7/22/1982	PR		DRILLING/CO...	
CODELL	3/1/1991	SI		RECOMPLETI...	
NIOBRARA	6/26/1985	PR		RE-FRAC, 2/28...	
NIOBRARA	2/28/2006	SI		RE-FRAC, 2/28...	
NIOBRARA	10/10/2007	PR		RE-FRAC, 2/28...	
NIOBRARA	3/14/2008	PR		RE-FRAC, 2/28...	

## Casing Strings

### Surface Casing, 333.0ftKB

Casing Description	Run Date	OD (in)	Wt/Len (l...)	Grade	Top, MD (ft...)	MD (ftKB)
Surface Casing	7/7/1982	8 5/8	24.00		13.0	333.0

### Production, 5,209.0ftKB

Casing Description	Run Date	OD (in)	Wt/Len (l...)	Grade	Top, MD (ft...)	MD (ftKB)
Production	10/4/2007	4 1/2	11.60	N-80	13.0	5,209.0

### Production, 6,968.0ftKB

Casing Description	Run Date	OD (in)	Wt/Len (l...)	Grade	Top, MD (ft...)	MD (ftKB)
Production	7/7/1982	4 1/2	11.60		13.0	6,968.0

## Cement

Description	Top Depth (ftKB)	Bottom Depth (ftKB)
SURFACE CASING CEMENT	13.0	333.0
PRODUCTION CASING CEMENT	5,650.0	6,968.0
CASING REPAIR CEMENT	13.0	510.0
CASING REPAIR CEMENT	910.0	2,505.0
CASING REPAIR CEMENT	5,106.0	5,286.0

## Tubing Strings

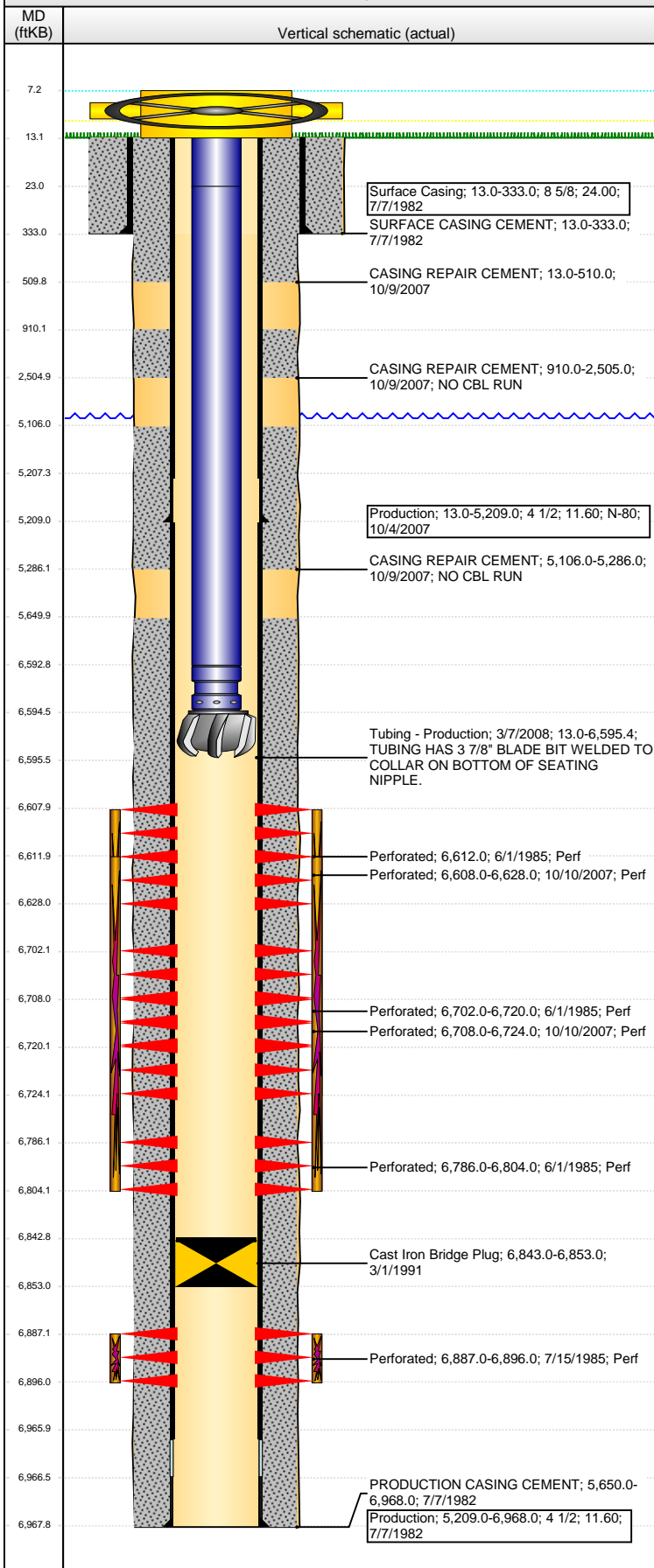
Tubing Description	Run Date	String...	ID (in)	Wt (lb/ft)	Grade	Len (ft)	Set De...
Tubing	3/1/1991	2 3/8		4.70		6,692.00	
Tubing	10/11/2007	2 7/8	2.441	6.50	N-80	6,536.70	
Tubing - Production	3/7/2008	2 3/8	1.995	4.70	J-55	6,582.40	

## Tubing Components

Item Des	OD (in)	Wt (lb/ft)	Grade	Jts	Len (ft)	Btm (ftKB)	Btm (TVD) (ftKB)
PUP JOINTS	2 3/8	4.70	J-55	1	10.00	23.0	23.0
Tubing	2 3/8	4.70	J-55	213	6,569.80	6,592.8	

**Well Name: MURPHY 1**

VERTICAL - ORIGINAL HOLE, 7/6/2016 4:04:12 PM



Tubing Components							
Item Des	OD (in)	Wt (lb/ft)	Grade	Jts	Len (ft)	Btm (ftKB)	Btm (TVD) (ftKB)
Pump Seating Nipple	2 3/8	1.10	J-55	1	1.60	6,594.4	
Blade Bit	3 7/8				1.00	6,595.4	

Perforation Data					
Zone	Bnch/St g	Entered Shot Total	Top (ftKB)	Btm (ftKB)	Date
NIOBRARA, ORIGINAL HOLE	A	80	6,608.00	6,628.00	10/10/2007
NIOBRARA, ORIGINAL HOLE	A	1	6,612.00	6,612.00	6/1/1985
NIOBRARA, ORIGINAL HOLE	B	4	6,702.00	6,720.00	6/1/1985
NIOBRARA, ORIGINAL HOLE	B	64	6,708.00	6,724.00	10/10/2007
NIOBRARA, ORIGINAL HOLE	C	3	6,786.00	6,804.00	6/1/1985
CODELL, ORIGINAL HOLE		19	6,887.00	6,896.00	7/15/1985

Stimulations & Treatments		
Date	Zone	Primary Job Type
7/15/1982	CODELL, ORIGINAL HOLE	DRILLING/COMPLETION - ORIGINAL
Technical Result	Tech Result Details	Tech Result Note
Comment		

Date	Zone	Primary Job Type
6/20/1985	NIOBRARA, ORIGINAL HOLE	RECOMPLETION
Technical Result	Tech Result Details	Tech Result Note
Comment		

Date	Zone	Primary Job Type
2/11/2008	NIOBRARA, ORIGINAL HOLE	RE-FRAC
Technical Result	Tech Result Details	Tech Result Note
Comment		

Date	Zone	Primary Job Type
2/27/2008	NIOBRARA, ORIGINAL HOLE	RE-FRAC
Technical Result	Tech Result Details	Tech Result Note
Comment		

Date	Zone	Primary Job Type
2/27/2008	NIOBRARA, ORIGINAL HOLE	RE-FRAC
Technical Result	Tech Result Details	Tech Result Note
Comment		

Other In Hole				
Run Date	Des	OD (in)	Top (ftKB)	Btm (ftKB)
3/1/1991	Cast Iron Bridge Plug	3.99	6,843.0	6,853.0

Logs			
Date	Type	Top, MD (ftKB)	Btm, MD (ftKB)
3/22/2011	GYRO	10.0	6,500.0