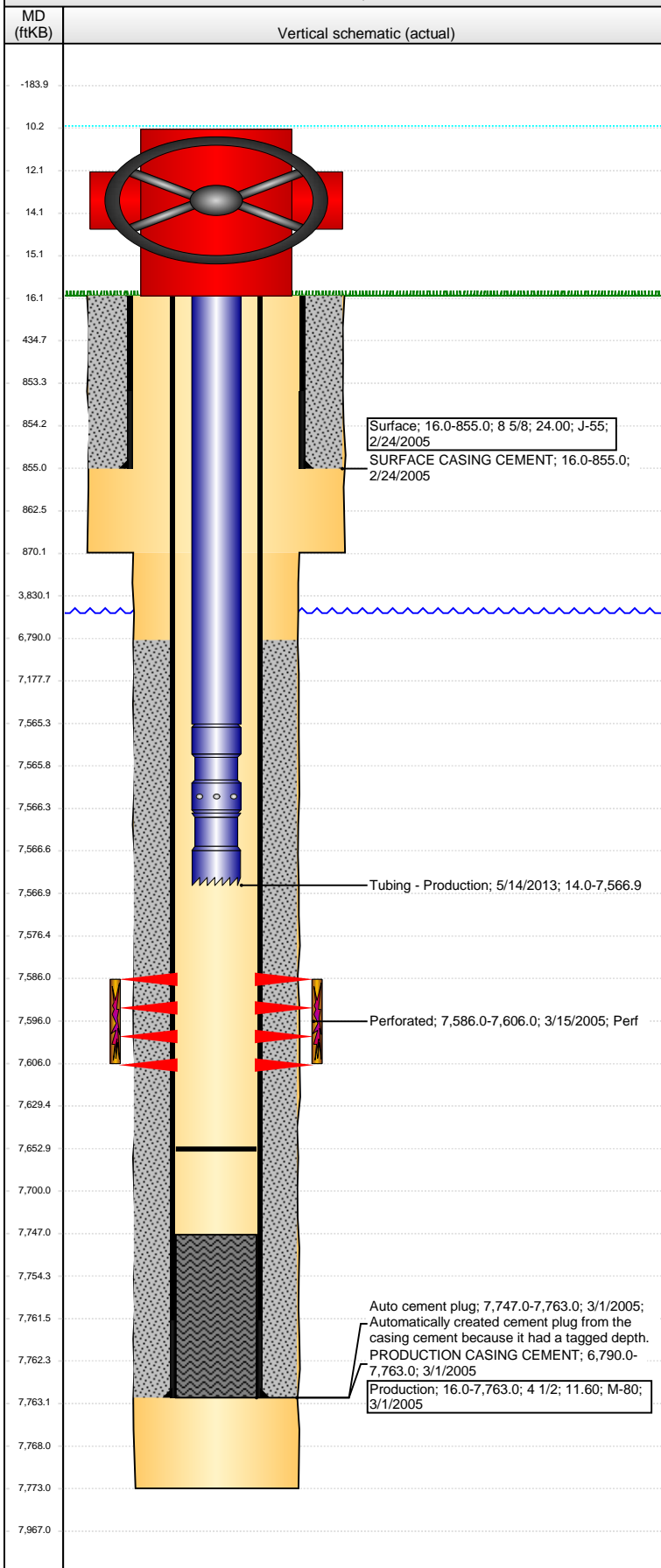


**Well Name: BOOTH N25-14**

DEVIATED - ORIGINAL HOLE, 7/7/2016 12:42:44 PM



Well Header									
API 05-123-22709		Business Unit DJ BASIN		District 15		Well Config DEVIATED			
Original KB Elevation (ft) 4,946		KB - GL / MSL (ftKB) 16.00		Spud Date 2/24/2005		P & A Date			
Comment									
Directions To Well HWY 257 & WCR 52: EAST 0.5 MILES, NORTHEAST 0.8 MILES INTO									
Congressional Location									
Quarter 1	Quarter 2	Quarter 3	Quarter 4	Section	Township	Twnshp N...	Range	Rng E/W Dir	
		SE	SW	25	5	N	67	W	
Bottom Hole Location									
North-South Distance (ft) 561.0		From N or S Line FSL		East-West Distance (ft) 2,023.0		From E or W Line FWL			
Plug Back Total Depths									
Date	Depth (ftKB)	Method			Com				
3/1/2005	7,747.0	CASING TALLY			GUIDE SHOE				
3/9/2005	7,715.0	CASED HOLE LOG			DEPTH-LOGGER/CBL				
5/15/2013	7,653.0	TUBING TALLY							
Wellbore Sections									
Section Des			Size (in)		Act Top, MD (ftKB)		Act Btm, MD (ftKB)		
SURFACE			12 1/4		16		870		
PRODUCTION			7 7/8		870		7,773		
Zone Statuses									
Zone Name	Status Date	Status	Fluid Type	Job	Prod Method				
CODELL	4/6/2005	PR	Gas	DRILLING/CO...					
CODELL	4/21/2010	PR	Gas	RE-FRAC, 4/8/...					
Casing Strings									
Surface, 855.0ftKB									
Casing Description Surface		Run Date 2/24/2005	OD (in) 8 5/8	Wt/Len (l... 24.00	Grade J-55	Top, MD (ft... 16.0	MD (ftKB) 855.0		
Production, 7,763.0ftKB									
Casing Description Production		Run Date 3/1/2005	OD (in) 4 1/2	Wt/Len (l... 11.60	Grade M-80	Top, MD (ft... 16.0	MD (ftKB) 7,763.0		
Cement									
Description SURFACE CASING CEMENT					Top Depth (ftKB) 16.0		Bottom Depth (ftKB) 855.0		
Description PRODUCTION CASING CEMENT					Top Depth (ftKB) 6,790.0		Bottom Depth (ftKB) 7,763.0		
Tubing Strings									
Tubing Description Tubing - Production		Run Date 3/17/2006	String... 2 3/8	ID (in) 1.995	Wt (lb/ft) 4.70	Grade J-55	Len (ft) 7,547.00	Set De...	
Tubing Description Tubing - Production		Run Date 4/8/2010	String... 2 3/8	ID (in) 1.995	Wt (lb/ft) 4.70	Grade J-55	Len (ft) 7,549.70	Set De...	
Tubing Description Tubing - Production		Run Date 5/14/2013	String... 2 3/8	ID (in) 1.995	Wt (lb/ft) 4.70	Grade J-55	Len (ft) 7,552.85	Set De...	
Tubing Components									
Item Des		OD (in)	Wt (lb/ft)	Grade	Jts	Len (ft)	Btm (ftKB)	Btm (TVD) (ftKB)	
EUE 8rd Tubing		2 3/8	4.70	J-55	236	7,551.20	7,565.2		
Pump Seating Nipple		2 3/8	1.10		1	1.10	7,566.3		
Notched collar		2 3/8			1	0.55	7,566.9		
Perforation Data									
Zone		Bnch/St g	Entered Shot Total	Top (ftKB)		Btm (ftKB)		Date	
CODELL, ORIGINAL HOLE			80	7,586.00		7,606.00		3/15/2005	
Stimulations & Treatments									
Date 4/4/2005	Zone CODELL, ORIGINAL HOLE			Primary Job Type DRILLING/COMPLETION - ORIGINAL					
Technical Result			Tech Result Details				Tech Result Note		
Comment									

**Well Name: BOOTH N25-14**

DEVIATED - ORIGINAL HOLE, 7/7/2016 12:42:46 PM

## Stimulations & Treatments

Date 4/16/2010	Zone CODELL, ORIGINAL HOLE	Primary Job Type RE-FRAC
Technical Result Success	Tech Result Details According to Plan	Tech Result Note
Comment PRE-ISIP = 2269 PSI, 5-MIN = 1517 PSI. THE TREATMENT EXHIBITED A POSITIVE PRESSURE RESPONSE (NOLTE AVG= 0.29; STARTED OUT NEGATIVE FOR 1 PSA). POST-ISIP = 3433 PSI, 5-MIN = 2897 PSI. TREATMENT WENT WELL.		

## Other In Hole

Run Date	Des	OD (in)	Top (ftKB)	Btm (ftKB)

## Logs

Date	Type	Top, MD (ftKB)	Btm, MD (ftKB)
3/1/2005	COMPENSATED DENSITY	3,500.0	7,751.0
3/1/2005	INDUCTION	854.0	7,771.0
3/9/2005	CBL/CCL/GR	6,800.0	7,715.0

