

<div><div><div>RMWS</div><div>ROCKY MOUNTAIN WIRELINE SERVICE</div></div></div>				TEMPERATURE CCL LOG (QUICK LOOK)			
Company	WPX ENERGY LLC			Well	FEDERAL RU 324-6 (TIGHT HOLE)		
Field	RULISON			County	GARFIELD		
				State	COLORADO		
Location:	API # : 05 - 045 - 22607			Other Services			
LAT: 39.467108 N LONG: -107.824749 W QtrQtr: NWSW				N/A			
Permanent Datum	SEC 6	TWP 7S	RGE 93W	Elevation			
Log Measured From	G.L. K.B.			7736'			
Drilling Measured From	K.B.			Ft Above PD 24'			
Date	04-02-2016			K.B. 7760' D.F. 7736' G.L. 7736'			
Run Number	ONE						
Depth Driller	9449'						
Present Depth Driller	9405'						
Depth Logger	9398'						
Bottom Logged Interval	9398'						
Top Log Interval	SURFACE						
Fluid Level	FULL'						
Type Fluid	WATER						
Max. Recorded Temp.	185 ° F						
Estimated Cement Top	5050'						
Equipment Number	219						
Location	GRAND JCT.						
Recorded By	MCBROOM			JACK			
Witnessed By	MR. RAGSDALE						
Borehole Record				Casing Record			
Run Number	Bit	From	To	Size	Weight	From	To
ONE							
TWO							

<<< Fold Here >>>

All interpretations are opinions based on inferences from electrical or other measurements and we cannot and do not guarantee the accuracy or correctness of any interpretation, and we shall not, except in the case of gross or willful negligence on our part, be liable or responsible for any loss, costs, damages, or expenses incurred or sustained by anyone resulting from any interpretation made by any of our officers, agents or employees. These interpretations are also subject to our general terms and conditions set out in our current Price Schedule.

WARRIOR 7.0 SOFTWARE - Comments

NOTE: THERE WAS NO LOG TO CORRELATE WITH

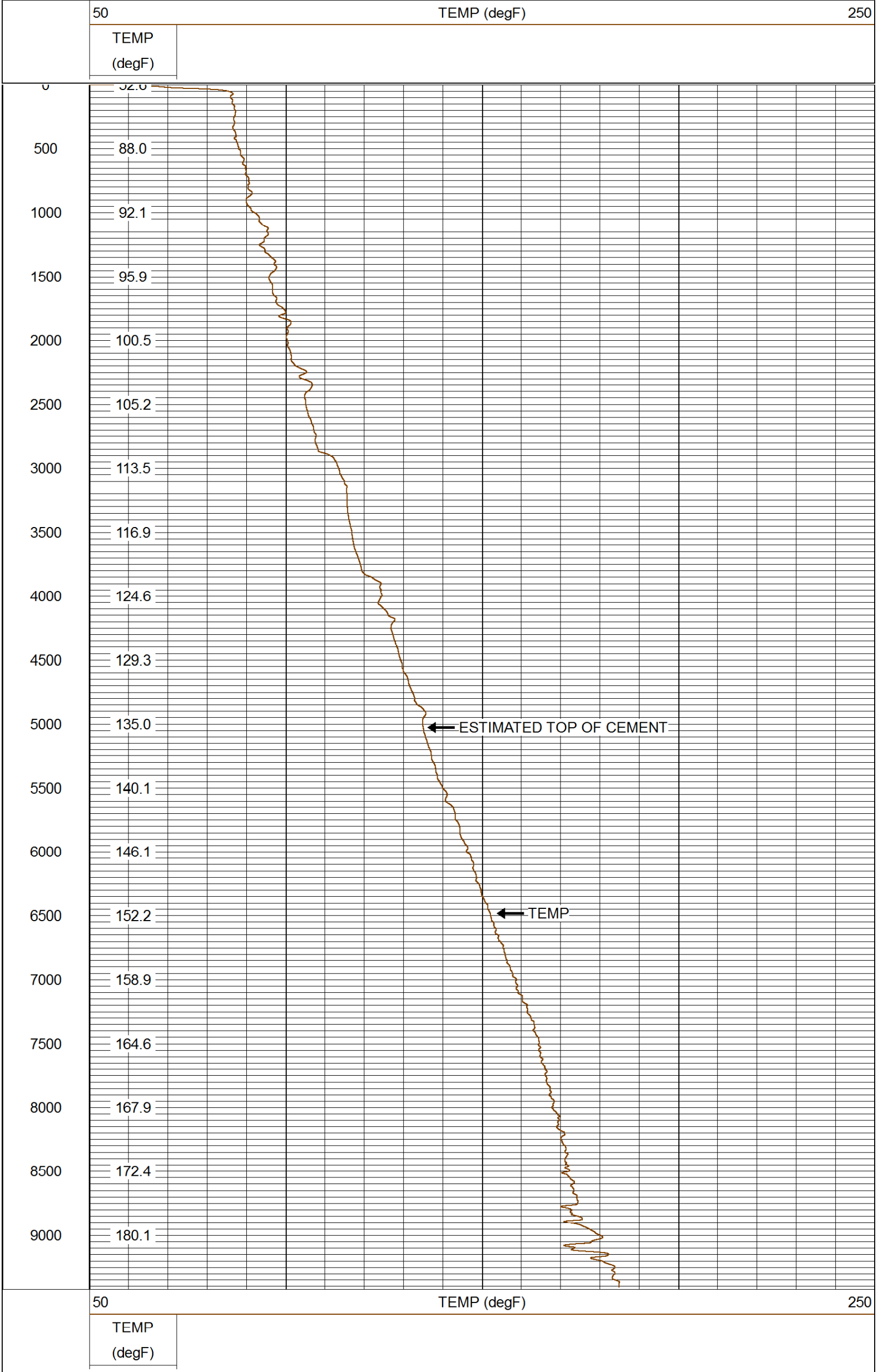
SHORT JOINT AT 5440' to 5462'

CASING PSI = STATIC
MAIN PASS 5" = 100'



MAIN PASS (QUICK LOOK)

Database File: 04022016_wpx_fed ru324-6.db
Dataset Pathname: mainpass/pass2.1
Presentation Format: rmtemp_q
Dataset Creation: Sat Apr 02 05:59:46 2016 by Calc SCH 120430
Charted by: Depth in Feet scaled 1:10000



Company WPX ENERGY LLC
Well FEDERAL RU 324-6
Field RULISON
County GARFIELD
State COLORADO