

NARRATIVE ATTACHMENT

FORM 4 (SUNDRY NOTICE)

Earthen Pit (Fiberglass Tank) Closure (Cathedral Federal 22-1)

Document Date-10/22/2013

Introduction

Encana Oil & Gas (USA) Inc. (Encana) is submitting this Form 4 Sundry Notice to request final closure status for the earthen pit (w/fiberglass tank) associated with the Cathedral Federal Unit #22-1 (COGCC facility #315008, COGCC remediation #TBD). The site investigation was conducted by a third party contractor as authorized by Encana personnel and in accordance with the approved Form 27 previously submitted for this location. All samples were collected in accordance with Encana's Environmental Compliance Group's Sampling Procedures. The analytical results for the respective soil samples are provided in Table 1 and Attachment A of this submittal. The text below provides the details of the site investigation. For a visual description of the site please refer to Figures 1, 2, and 3 – Site Maps.

Assessment Activities

October 3, 2013 - The excavated soil surrounding the earthen pit (w/fiberglass tank) was screened utilizing a photoionization detector (PID) prior to collecting soil samples for laboratory analysis. The fiberglass tank was carefully removed using a trackhoe and placed onsite for later recycling or disposal. It should be noted that the fiberglass tank was pumped out prior to removal. A grab sample was collected directly from the lowest point of the culvert pit after excavation. In addition, four (4) grab samples were collected, one from each excavated sidewall. Approximately 165 cubic yards of excavated material was removed from the pit and laid out in 1.5 foot tall (51' x 60') lift for evaluation of impacts. The excavated material was sampled by way of a nine (9) point composite sample. Four (4) background samples were collected from approximately six (6) inches beneath the grounds surface for analysis with regards to arsenic.

Analytical Review

Sample results indicate that soil within the earthen pit (w/fiberglass tank) footprint on Encana's Cathedral Federal Unit #22-1 well pad, had organic constituent concentrations of the excavated area and excavated material below or within COGCC Table 910-1. Analytical results indicated the excavated material exceeded COGCC Table 910-1 allowable concentrations for arsenic (4.6 ppm), EC (6 mmhos/cm), SAR (52), and pH (9.7). Though the arsenic concentration in the soil is above the allowable concentration identified in Table 910-1, the concentration is within the range of arsenic background values (4.0 – 4.9 ppm) in this area. Based on these results and footnote 1 to COGCC Table 910-1, Encana requests that the COGCC consider the higher range of background arsenic value(s) as the allowable concentration for this constituent. Please see Table 1 and Attachment A for the analytical results.

Though the elevated arsenic, EC, SAR, and pH levels of the returned spoil material within the excavated footprint area is above the allowable levels identified in Table 910-1; it will be buried greater than three feet bgs of existing pad footprint material to assure that material with elevated level of arsenic, EC, SAR, and pH will have no adverse effect on future re-vegetation efforts and receptors in the area. Please see Table 1 and Attachment A for analytical results.



NARRATIVE ATTACHMENT

FORM 4 (SUNDRY NOTICE)

Earthen Pit (Fiberglass Tank) Closure (Cathedral Federal 22-1)

Document Date-10/22/2013

Conclusion

Based on the site investigation and analytical results, the pit associated with the Cathedral Federal Unit #22-1 is in compliance with the standards specified within COGCC Table 910-1. Encana respectfully requests that final closure be granted for the respective pit, COGCC remediation #TBD.

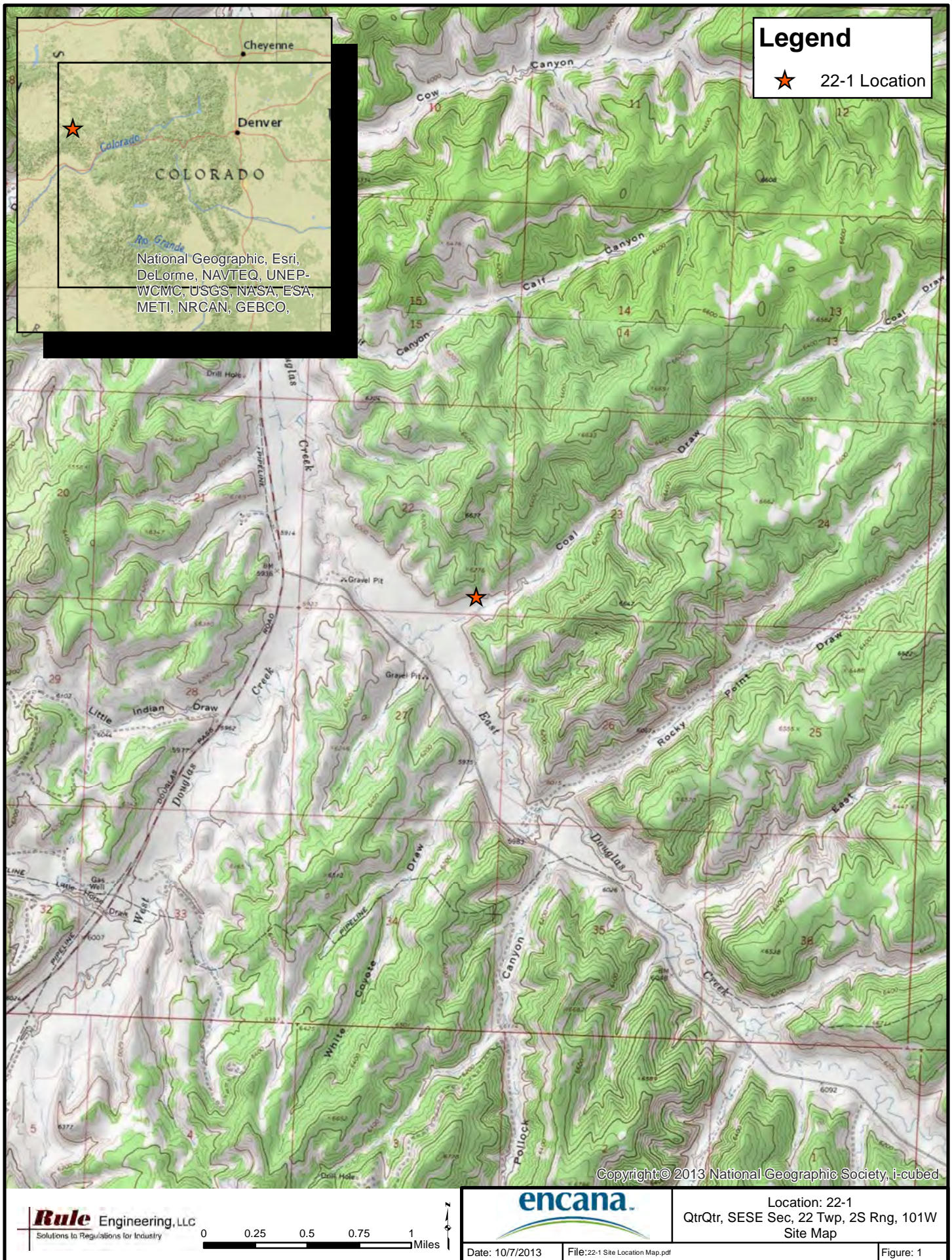
Notification of Completion

This Sundry Notice is also being submitted as the Notification of Completion for Remediation #TBD. If the information provided here is satisfactory, please provide documentation of the closure of this remediation project.

Attachments

Topographic Location Map (Figure 1)
22-1 Aerial map with sample locations (Figure 2)
22-1 Site Diagram of Excavation and sample locations (Figure 3)
Laboratory Results Summary Table 1 – 22-1 Site Investigation (Table 1)
Attachment A- Laboratory Reports





Legend

★ 22-1 Location

Cheyenne

Denver

COLORADO

Colorado

Rio Grande

National Geographic, Esri, DeLorme, NAVTEQ, UNEP-WCMC, USGS, NASA, ESA, METI, NRCAN, GEBCO,

Copyright: © 2013 National Geographic Society, i-cubed

Rule Engineering, LLC
Solutions to Regulations for Industry

0 0.25 0.5 0.75 1 Miles

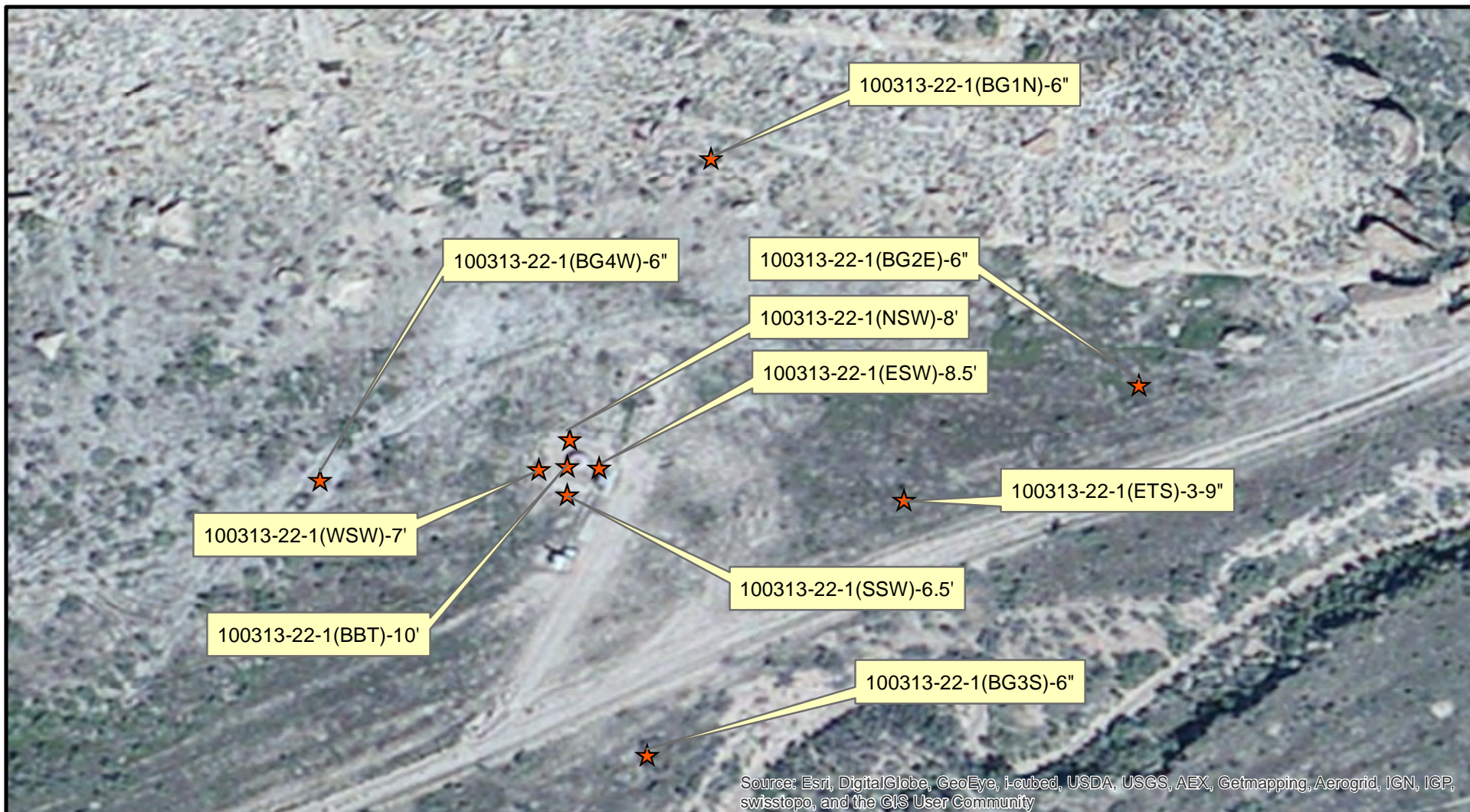


Location: 22-1
QtrQtr, SESE Sec, 22 Twp, 2S Rng, 101W
Site Map

Date: 10/7/2013

File: 22-1 Site Location Map.pdf

Figure: 1



Legend

★ Soil Sample Location

0 37.5 75 150 225 Feet



Rule Engineering, LLC
Solutions to Regulations for Industry



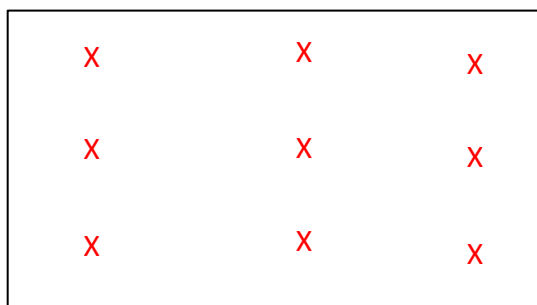
**22-1
Sample Location Map**

DATE: 10/7/2013 JG FILE: 22-1 Sample Location Map.pdf

FIGURE: 2

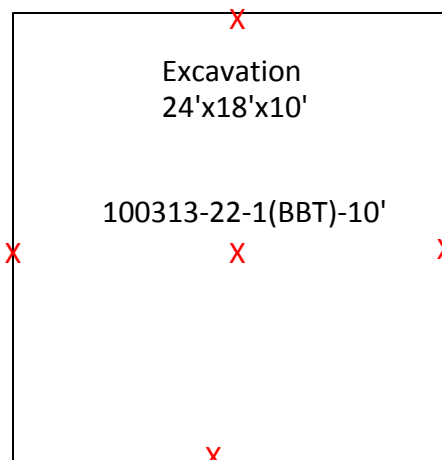


100313-22-1(ETS)

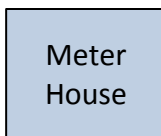


Lift
51' x 60'

100313-22-1(NSW)-8'



100313-22-1(SSW)-6.5'



Legend
X-Sample



Well: Figure 3. 22-1 Site Diagram

Area: Cathedral Federal Unit

Legal: SESE, Sec 22, 02S, 101W, 6th PM

Date: 10/10/13

Drawn By: Shad Johnson

Revision Date:

Scale: None

Page 1 of 1

Appendix A



12065 Lebanon Rd.
Mt. Juliet, TN 37122
(615) 758-5858
1-800-767-5859
Fax (615) 758-5859

Tax I.D. 62-0814289

Est. 1970

Charles Jensen
EnCana Oil & Gas - Rangely, CO
1125 Escalante Drive
Rangely, CO 81648-3600

Report Summary

Monday October 21, 2013

Report Number: L661691

Samples Received: 10/05/13

Client Project: 22-1

Description: 22-1 Site Clearance

The analytical results in this report are based upon information supplied by you, the client, and are for your exclusive use. If you have any questions regarding this data package, please do not hesitate to call.

Entire Report Reviewed By:

T. Alan Harvill , ESC Representative

Laboratory Certification Numbers

A2LA - 1461-01, AIHA - 100789, AL - 40660, CA - 01157CA, CT - PH-0197,
FL - E87487, GA - 923, IN - C-TN-01, KY - 90010, KYUST - 0016,
NC - ENV375/DW21704/BIO041, ND - R-140, NJ - TN002, NJ NELAP - TN002,
SC - 84004, TN - 2006, VA - 460132, WV - 233, AZ - 0612,
MN - 047-999-395, NY - 11742, WI - 998093910, NV - TN000032011-1,
TX - T104704245-11-3, OK - 9915, PA - 68-02979, IA Lab #364

Accreditation is only applicable to the test methods specified on each scope of accreditation held by ESC Lab Sciences.

Note: The use of the preparatory EPA Method 3511 is not approved or endorsed by the CA ELAP.

This report may not be reproduced, except in full, without written approval from ESC Lab Sciences. Where applicable, sampling conducted by ESC is performed per guidance provided in laboratory standard operating procedures: 060302, 060303, and 060304.



12065 Lebanon Rd.
Mt. Juliet, TN 37122
(615) 758-5858
1-800-767-5859
Fax (615) 758-5859

Tax I.D. 62-0814289

Est. 1970

REPORT OF ANALYSIS

Charles Jensen
EnCana Oil & Gas - Rangely, CO
1125 Escalante Drive
Rangely, CO 81648-3600

October 21, 2013

Date Received : October 05, 2013
Description : 22-1 Site Clearance
Sample ID : 100313-22-1(NSW) 8 FT
Collected By : Shad Johnson
Collection Date : 10/03/13 13:00

ESC Sample # : L661691-01

Site ID : 22-1

Project # : 22-1

Parameter	Result	Det. Limit	Units	Method	Date	Dil.
Benzene	BDL	0.0025	mg/kg	8021	10/11/13	5
Toluene	BDL	0.025	mg/kg	8021	10/11/13	5
Ethylbenzene	BDL	0.0025	mg/kg	8021	10/11/13	5
Total Xylene	BDL	0.0075	mg/kg	8021	10/11/13	5
TPH (GC/FID) Low Fraction	BDL	0.50	mg/kg	8015	10/11/13	5
Surrogate Recovery-%						
a,a,a-Trifluorotoluene(FID)	101.		% Rec.	8021/8015	10/11/13	5
a,a,a-Trifluorotoluene(PID)	103.		% Rec.	8021/8015	10/11/13	5
TPH (GC/FID) High Fraction	6.9	4.0	mg/kg	8015D/DRO	10/10/13	1
Surrogate recovery(%)						
o-Terphenyl	64.1		% Rec.	8015D/DRO	10/10/13	1

BDL - Below Detection Limit

Det. Limit - Practical Quantitation Limit(PQL)

Note:

The reported analytical results relate only to the sample submitted.

This report shall not be reproduced, except in full, without the written approval from ESC.

Reported: 10/21/13 16:06 Printed: 10/21/13 18:24



12065 Lebanon Rd.
Mt. Juliet, TN 37122
(615) 758-5858
1-800-767-5859
Fax (615) 758-5859

Tax I.D. 62-0814289

Est. 1970

REPORT OF ANALYSIS

Charles Jensen
EnCana Oil & Gas - Rangely, CO
1125 Escalante Drive
Rangely, CO 81648-3600

October 21, 2013

Date Received : October 05, 2013
Description : 22-1 Site Clearance
Sample ID : 100313-22-1(ESW) 8.5 FT
Collected By : Shad Johnson
Collection Date : 10/03/13 13:10

ESC Sample # : L661691-02

Site ID : 22-1

Project # : 22-1

Parameter	Result	Det. Limit	Units	Method	Date	Dil.
Benzene	BDL	0.0025	mg/kg	8021	10/11/13	5
Toluene	BDL	0.025	mg/kg	8021	10/11/13	5
Ethylbenzene	BDL	0.0025	mg/kg	8021	10/11/13	5
Total Xylene	BDL	0.0075	mg/kg	8021	10/11/13	5
TPH (GC/FID) Low Fraction	BDL	0.50	mg/kg	8015	10/11/13	5
Surrogate Recovery-%						
a,a,a-Trifluorotoluene(FID)	99.5		% Rec.	8021/8015	10/11/13	5
a,a,a-Trifluorotoluene(PID)	102.		% Rec.	8021/8015	10/11/13	5
TPH (GC/FID) High Fraction	BDL	4.0	mg/kg	8015D/DRO	10/10/13	1
Surrogate recovery(%)						
o-Terphenyl	66.9		% Rec.	8015D/DRO	10/10/13	1

BDL - Below Detection Limit

Det. Limit - Practical Quantitation Limit(PQL)

Note:

The reported analytical results relate only to the sample submitted.

This report shall not be reproduced, except in full, without the written approval from ESC.

Reported: 10/21/13 16:06 Printed: 10/21/13 18:24



12065 Lebanon Rd.
Mt. Juliet, TN 37122
(615) 758-5858
1-800-767-5859
Fax (615) 758-5859

Tax I.D. 62-0814289

Est. 1970

REPORT OF ANALYSIS

Charles Jensen
EnCana Oil & Gas - Rangely, CO
1125 Escalante Drive
Rangely, CO 81648-3600

October 21, 2013

Date Received : October 05, 2013
Description : 22-1 Site Clearance
Sample ID : 100313-22-1(SSW) 6.5 FT
Collected By : Shad Johnson
Collection Date : 10/03/13 13:20

ESC Sample # : L661691-03

Site ID : 22-1

Project # : 22-1

Parameter	Result	Det. Limit	Units	Method	Date	Dil.
Benzene	BDL	0.0025	mg/kg	8021	10/11/13	5
Toluene	BDL	0.025	mg/kg	8021	10/11/13	5
Ethylbenzene	BDL	0.0025	mg/kg	8021	10/11/13	5
Total Xylene	BDL	0.0075	mg/kg	8021	10/11/13	5
TPH (GC/FID) Low Fraction	BDL	0.50	mg/kg	8015	10/11/13	5
Surrogate Recovery-%						
a,a,a-Trifluorotoluene(FID)	100.		% Rec.	8021/8015	10/11/13	5
a,a,a-Trifluorotoluene(PID)	102.		% Rec.	8021/8015	10/11/13	5
TPH (GC/FID) High Fraction	BDL	4.0	mg/kg	8015D/DRO	10/10/13	1
Surrogate recovery(%)						
o-Terphenyl	66.6		% Rec.	8015D/DRO	10/10/13	1

BDL - Below Detection Limit

Det. Limit - Practical Quantitation Limit(PQL)

Note:

The reported analytical results relate only to the sample submitted.

This report shall not be reproduced, except in full, without the written approval from ESC.

Reported: 10/21/13 16:06 Printed: 10/21/13 18:24



12065 Lebanon Rd.
Mt. Juliet, TN 37122
(615) 758-5858
1-800-767-5859
Fax (615) 758-5859

Tax I.D. 62-0814289

Est. 1970

REPORT OF ANALYSIS

Charles Jensen
EnCana Oil & Gas - Rangely, CO
1125 Escalante Drive
Rangely, CO 81648-3600

October 21, 2013

Date Received : October 05, 2013
Description : 22-1 Site Clearance
Sample ID : 100313-22-1(WSW) 7 FT
Collected By : Shad Johnson
Collection Date : 10/03/13 13:30

ESC Sample # : L661691-04

Site ID : 22-1

Project # : 22-1

Parameter	Result	Det. Limit	Units	Method	Date	Dil.
Benzene	BDL	0.0025	mg/kg	8021	10/11/13	5
Toluene	BDL	0.025	mg/kg	8021	10/11/13	5
Ethylbenzene	BDL	0.0025	mg/kg	8021	10/11/13	5
Total Xylene	BDL	0.0075	mg/kg	8021	10/11/13	5
TPH (GC/FID) Low Fraction	BDL	0.50	mg/kg	8015	10/11/13	5
Surrogate Recovery-%						
a,a,a-Trifluorotoluene(FID)	100.		% Rec.	8021/8015	10/11/13	5
a,a,a-Trifluorotoluene(PID)	102.		% Rec.	8021/8015	10/11/13	5
TPH (GC/FID) High Fraction	BDL	4.0	mg/kg	8015D/DRO	10/10/13	1
Surrogate recovery(%)						
o-Terphenyl	62.9		% Rec.	8015D/DRO	10/10/13	1

BDL - Below Detection Limit

Det. Limit - Practical Quantitation Limit(PQL)

Note:

The reported analytical results relate only to the sample submitted.

This report shall not be reproduced, except in full, without the written approval from ESC.

Reported: 10/21/13 16:06 Printed: 10/21/13 18:24



12065 Lebanon Rd.
Mt. Juliet, TN 37122
(615) 758-5858
1-800-767-5859
Fax (615) 758-5859

Tax I.D. 62-0814289

Est. 1970

REPORT OF ANALYSIS

Charles Jensen
EnCana Oil & Gas - Rangely, CO
1125 Escalante Drive
Rangely, CO 81648-3600

October 21, 2013

Date Received : October 05, 2013
Description : 22-1 Site Clearance
Sample ID : 100313-22-1(BBT) 10 FT
Collected By : Shad Johnson
Collection Date : 10/03/13 13:40

ESC Sample # : L661691-05

Site ID : 22-1

Project # : 22-1

Parameter	Result	Det. Limit	Units	Method	Date	Dil.
Benzene	BDL	0.0025	mg/kg	8021	10/11/13	5
Toluene	BDL	0.025	mg/kg	8021	10/11/13	5
Ethylbenzene	BDL	0.0025	mg/kg	8021	10/11/13	5
Total Xylene	BDL	0.0075	mg/kg	8021	10/11/13	5
TPH (GC/FID) Low Fraction	BDL	0.50	mg/kg	8015	10/11/13	5
Surrogate Recovery-%						
a,a,a-Trifluorotoluene(FID)	101.		% Rec.	8021/8015	10/11/13	5
a,a,a-Trifluorotoluene(PID)	102.		% Rec.	8021/8015	10/11/13	5
TPH (GC/FID) High Fraction	BDL	4.0	mg/kg	8015D/DRO	10/10/13	1
Surrogate recovery(%)						
o-Terphenyl	65.8		% Rec.	8015D/DRO	10/10/13	1

BDL - Below Detection Limit

Det. Limit - Practical Quantitation Limit(PQL)

Note:

The reported analytical results relate only to the sample submitted.

This report shall not be reproduced, except in full, without the written approval from ESC.

Reported: 10/21/13 16:06 Printed: 10/21/13 18:24



12065 Lebanon Rd.
Mt. Juliet, TN 37122
(615) 758-5858
1-800-767-5859
Fax (615) 758-5859

Tax I.D. 62-0814289

Est. 1970

REPORT OF ANALYSIS

Charles Jensen
EnCana Oil & Gas - Rangely, CO
1125 Escalante Drive
Rangely, CO 81648-3600

October 21, 2013

Date Received : October 05, 2013
Description : 22-1 Site Clearance
Sample ID : 100313-22-1(ETS) 3-9 IN
Collected By : Shad Johnson
Collection Date : 10/03/13 14:00

ESC Sample # : L661691-06

Site ID : 22-1

Project # : 22-1

Parameter	Result	Det. Limit	Units	Method	Date	Dil.
Chromium, Hexavalent	BDL	10.	mg/kg	3060A/7196A	10/10/13	5
Chromium, Trivalent	BDL	10.	mg/kg	Calc.	10/21/13	1
ORP	-15.		mV	2580 B-2011	10/10/13	1
pH	9.7		su	9045D	10/11/13	1
Sodium Adsorption Ratio	52.			Calc.	10/20/13	1
Specific Conductance	6000		umhos/cm	9050AMod	10/11/13	1
Mercury	BDL	0.020	mg/kg	7471	10/09/13	1
Arsenic	4.6	1.0	mg/kg	6010B	10/19/13	1
Barium	180	0.25	mg/kg	6010B	10/19/13	1
Cadmium	BDL	0.25	mg/kg	6010B	10/19/13	1
Chromium	6.3	0.50	mg/kg	6010B	10/19/13	1
Copper	10.	1.0	mg/kg	6010B	10/19/13	1
Lead	9.2	0.25	mg/kg	6010B	10/19/13	1
Nickel	9.9	1.0	mg/kg	6010B	10/19/13	1
Selenium	BDL	1.0	mg/kg	6010B	10/19/13	1
Silver	BDL	0.50	mg/kg	6010B	10/20/13	1
Zinc	38.	1.5	mg/kg	6010B	10/19/13	1
Benzene	0.017	0.0025	mg/kg	8021	10/11/13	5
Toluene	BDL	0.025	mg/kg	8021	10/11/13	5
Ethylbenzene	BDL	0.0025	mg/kg	8021	10/11/13	5
Total Xylene	0.048	0.0075	mg/kg	8021	10/11/13	5
TPH (GC/FID) Low Fraction	42.	0.50	mg/kg	8015	10/11/13	5
Surrogate Recovery-%						
a,a,a-Trifluorotoluene(FID)	93.4		% Rec.	8021/8015	10/11/13	5
a,a,a-Trifluorotoluene(PID)	102.		% Rec.	8021/8015	10/11/13	5
TPH (GC/FID) High Fraction	8.1	4.0	mg/kg	8015D/DRO	10/10/13	1
Surrogate recovery(%)						
o-Terphenyl	65.1		% Rec.	8015D/DRO	10/10/13	1
Polynuclear Aromatic Hydrocarbons						
Anthracene	BDL	0.0060	mg/kg	8270C-SIM	10/10/13	1
Acenaphthene	BDL	0.0060	mg/kg	8270C-SIM	10/10/13	1
Acenaphthylene	BDL	0.0060	mg/kg	8270C-SIM	10/10/13	1
Benzo(a)anthracene	BDL	0.0060	mg/kg	8270C-SIM	10/10/13	1
Benzo(a)pyrene	BDL	0.0060	mg/kg	8270C-SIM	10/10/13	1

BDL - Below Detection Limit
Det. Limit - Practical Quantitation Limit(PQL)
L661691-06 (PH) - 9.7@21.6c
L661691-06 (CR6) - Diluted due to sample color interference.



12065 Lebanon Rd.
Mt. Juliet, TN 37122
(615) 758-5858
1-800-767-5859
Fax (615) 758-5859

Tax I.D. 62-0814289

Est. 1970

REPORT OF ANALYSIS

Charles Jensen
EnCana Oil & Gas - Rangely, CO
1125 Escalante Drive
Rangely, CO 81648-3600

October 21, 2013

Date Received : October 05, 2013
Description : 22-1 Site Clearance
Sample ID : 100313-22-1(ETS) 3-9 IN
Collected By : Shad Johnson
Collection Date : 10/03/13 14:00

ESC Sample # : L661691-06

Site ID : 22-1

Project # : 22-1

Parameter	Result	Det. Limit	Units	Method	Date	Dil.
Benzo(b)fluoranthene	BDL	0.0060	mg/kg	8270C-SIM	10/10/13	1
Benzo(g,h,i)perylene	BDL	0.0060	mg/kg	8270C-SIM	10/10/13	1
Benzo(k)fluoranthene	BDL	0.0060	mg/kg	8270C-SIM	10/10/13	1
Chrysene	BDL	0.0060	mg/kg	8270C-SIM	10/10/13	1
Dibenz(a,h)anthracene	BDL	0.0060	mg/kg	8270C-SIM	10/10/13	1
Fluoranthene	BDL	0.0060	mg/kg	8270C-SIM	10/10/13	1
Fluorene	BDL	0.0060	mg/kg	8270C-SIM	10/10/13	1
Indeno(1,2,3-cd)pyrene	BDL	0.0060	mg/kg	8270C-SIM	10/10/13	1
Naphthalene	BDL	0.020	mg/kg	8270C-SIM	10/10/13	1
Phenanthrene	BDL	0.0060	mg/kg	8270C-SIM	10/10/13	1
Pyrene	BDL	0.0060	mg/kg	8270C-SIM	10/10/13	1
1-Methylnaphthalene	BDL	0.020	mg/kg	8270C-SIM	10/10/13	1
2-Methylnaphthalene	BDL	0.020	mg/kg	8270C-SIM	10/10/13	1
2-Chloronaphthalene	BDL	0.020	mg/kg	8270C-SIM	10/10/13	1
Surrogate Recovery						
Nitrobenzene-d5	89.0		% Rec.	8270C-SIM	10/10/13	1
2-Fluorobiphenyl	82.1		% Rec.	8270C-SIM	10/10/13	1
p-Terphenyl-d14	74.4		% Rec.	8270C-SIM	10/10/13	1

BDL - Below Detection Limit

Det. Limit - Practical Quantitation Limit(PQL)

Note:

The reported analytical results relate only to the sample submitted.

This report shall not be reproduced, except in full, without the written approval from ESC.

Reported: 10/21/13 16:06 Printed: 10/21/13 18:24

L661691-06 (PH) - 9.7@21.6c

L661691-06 (CR6) - Diluted due to sample color interference.

Attachment A
List of Analytes with QC Qualifiers

Sample Number	Work Group	Sample Type	Analyte	Run ID	Qualifier
L661691-01	WG685985	SAMP	TPH (GC/FID) High Fraction	R2838681	J6
L661691-06	WG686199	SAMP	Chromium,Hexavalent	R2838628	O

Attachment B
Explanation of QC Qualifier Codes

Qualifier	Meaning
J6	The sample matrix interfered with the ability to make any accurate determination; spike value is low
0	(ESC) Sample diluted due to matrix interferences that impaired the ability to make an accurate analytical determination. The detection limit is elevated in order to reflect the necessary dilution.

Qualifier Report Information

ESC utilizes sample and result qualifiers as set forth by the EPA Contract Laboratory Program and as required by most certifying bodies including NELAC. In addition to the EPA qualifiers adopted by ESC, we have implemented ESC qualifiers to provide more information pertaining to our analytical results. Each qualifier is designated in the qualifier explanation as either EPA or ESC. Data qualifiers are intended to provide the ESC client with more detailed information concerning the potential bias of reported data. Because of the wide range of constituents and variety of matrices incorporated by most EPA methods, it is common for some compounds to fall outside of established ranges. These exceptions are evaluated and all reported data is valid and useable "unless qualified as 'R' (Rejected)."

Definitions

- Accuracy - The relationship of the observed value of a known sample to the true value of a known sample. Represented by percent recovery and relevant to samples such as: control samples, matrix spike recoveries, surrogate recoveries, etc.
- Precision - The agreement between a set of samples or between duplicate samples. Relates to how close together the results are and is represented by Relative Percent Difference.
- Surrogate - Organic compounds that are similar in chemical composition, extraction, and chromatography to analytes of interest. The surrogates are used to determine the probable response of the group of analytes that are chemically related to the surrogate compound. Surrogates are added to the sample and carried through all stages of preparation and analyses.
- TIC - Tentatively Identified Compound: Compounds detected in samples that are not target compounds, internal standards, system monitoring compounds, or surrogates.

Summary of Remarks For Samples Printed
10/21/13 at 18:24:35

TSR Signing Reports: 358
R5 - Desired TAT

Sample: L661691-01 Account: ENCANRCO Received: 10/05/13 09:00 Due Date: 10/11/13 00:00 RPT Date: 10/21/13 16:06
Sample: L661691-02 Account: ENCANRCO Received: 10/05/13 09:00 Due Date: 10/11/13 00:00 RPT Date: 10/21/13 16:06
Sample: L661691-03 Account: ENCANRCO Received: 10/05/13 09:00 Due Date: 10/11/13 00:00 RPT Date: 10/21/13 16:06
Sample: L661691-04 Account: ENCANRCO Received: 10/05/13 09:00 Due Date: 10/11/13 00:00 RPT Date: 10/21/13 16:06
Sample: L661691-05 Account: ENCANRCO Received: 10/05/13 09:00 Due Date: 10/11/13 00:00 RPT Date: 10/21/13 16:06
Sample: L661691-06 Account: ENCANRCO Received: 10/05/13 09:00 Due Date: 10/11/13 00:00 RPT Date: 10/21/13 16:06

ENCANRCO-RULEENG
Encana Oil & Gas
143 Diamond Avenue
Parachute, CO 81635
ENCANRCO-RULEENG

Billing Information:
 Charles Jensen
 143 Diamond Ave
 Parachute, CO 81635

Report to: Charles Jensen

Email to: Charles Jensen, Shad Johnson

Project Description: 22-1-Site Clearance

City/State Collected

Phone: 970-285-2735
 FAX:

Client Project #: 22-1

ESC Key: ENCANRCO-RULEENG

Collected by: Shad Johnson

Site/Facility ID#: 22-1

P.O.#:

Collected by (signature):

Rush? (Lab MUST Be Notified)

Date Results Needed:

Same Day.....200%
 Next Day.....100%
 Two Day.....50%
 Three Day.....25%

Email? ☒ No ☐ Yes

FAX? ☐ No ☐ Yes

Immediately Packed on Ice N ☒

Sample ID	Comp/Grab	Matrix*	Depth	Date	Time	No. of Cntrs	BTEXGRO / DRO - 8260/8015	SV8270PAHSIM - 8270SIM	SPCON - 9050AMod	SAR - Calc.	RCRA8 Metals + Cu, Ni, and Zn - 6010/7470	CR6SS - 3060A/7196	CR3 - Calc.	Arsenic	Remarks/Contaminant	Sample # (lab only)
100313-22-1(NSW); 8'	Grab	SS	8'	10/03/13	1300	2	X									164169C-01
100313-22-1(ESW); 8.5'	Grab	SS	8.5'	10/03/13	1310	2	X									02
100313-22-1(SSW); 6.5'	Grab	SS	6.5'	10/03/13	1320	2	X									07
100313-22-1(WSW); 7.0'	Grab	SS	7.0'	10/03/13	1330	2	X									04
100313-22-1(BBT); 10'	Grab	SS	10'	10/03/13	1340	2	X									05
100313-22-1(ETS); 3-9"	Comp	SS	3-9"	10/03/13	1400	3	X	x	x	X	x	x	x			06

Analysis/Container/Preservative

Chain of Custody
 Page 1 of 1



12065 Lebanon Road
 Mt. Juliet, TN 37122

Phone: (800) 767-5859
 Phone: (615) 758-5858
 Fax: (615) 758-5859

1083

CoCode ENCRCO (lab use only)

Template/Prelogin

Shipped Via:

*Matrix: SS - Soil/Solid GW - Groundwater WW - WasteWater DW - Drinking Water OT - Other _____

pH _____ Temp _____

Remarks:

Flow _____ Other _____

Relinquished by: (Signature)	Date: 10/4/13	Time: 1000	Received by: (Signature)	Samples returned via: <input type="checkbox"/> UPS <input checked="" type="checkbox"/> FedEx <input type="checkbox"/> Courier	Condition: (lab use only)
Relinquished by: (Signature)	Date:	Time:	Received by: (Signature)	Temp: 32	Bottles Received: 13=402
Relinquished by: (Signature)	Date:	Time:	Received for lab by: (Signature)	Date: 10-5-13	Time: 0900
				pH Checked:	NCF:

5086 5826 0773



12065 Lebanon Rd.
Mt. Juliet, TN 37122
(615) 758-5858
1-800-767-5859
Fax (615) 758-5859

Tax I.D. 62-0814289

Est. 1970

Charles Jensen
EnCana Oil & Gas - Rangely, CO
1125 Escalante Drive
Rangely, CO 81648-3600

Report Summary

Sunday October 20, 2013

Report Number: L661692

Samples Received: 10/05/13

Client Project: 22-1

Description: 22-1 Site Clearance

The analytical results in this report are based upon information supplied by you, the client, and are for your exclusive use. If you have any questions regarding this data package, please do not hesitate to call.

Entire Report Reviewed By:

T. Alan Harvill , ESC Representative

Laboratory Certification Numbers

A2LA - 1461-01, AIHA - 100789, AL - 40660, CA - 01157CA, CT - PH-0197,
FL - E87487, GA - 923, IN - C-TN-01, KY - 90010, KYUST - 0016,
NC - ENV375/DW21704/BIO041, ND - R-140, NJ - TN002, NJ NELAP - TN002,
SC - 84004, TN - 2006, VA - 460132, WV - 233, AZ - 0612,
MN - 047-999-395, NY - 11742, WI - 998093910, NV - TN000032011-1,
TX - T104704245-11-3, OK - 9915, PA - 68-02979, IA Lab #364

Accreditation is only applicable to the test methods specified on each scope of accreditation held by ESC Lab Sciences.

Note: The use of the preparatory EPA Method 3511 is not approved or endorsed by the CA ELAP.

This report may not be reproduced, except in full, without written approval from ESC Lab Sciences. Where applicable, sampling conducted by ESC is performed per guidance provided in laboratory standard operating procedures: 060302, 060303, and 060304.



12065 Lebanon Rd.
Mt. Juliet, TN 37122
(615) 758-5858
1-800-767-5859
Fax (615) 758-5859

Tax I.D. 62-0814289

Est. 1970

REPORT OF ANALYSIS

Charles Jensen
EnCana Oil & Gas - Rangely, CO
1125 Escalante Drive
Rangely, CO 81648-3600

October 20, 2013

Date Received : October 05, 2013
Description : 22-1 Site Clearance
Sample ID : 100313-22-1(BG1N) 6 IN
Collected By : Shad Johnson
Collection Date : 10/03/13 09:00

ESC Sample # : L661692-01

Site ID : 22-1

Project # : 22-1

Parameter	Result	Det. Limit	Units	Method	Date	Dil.
Arsenic	4.3	1.0	mg/kg	6010B	10/19/13	1

BDL - Below Detection Limit

Det. Limit - Practical Quantitation Limit(PQL)

Note:

The reported analytical results relate only to the sample submitted.

This report shall not be reproduced, except in full, without the written approval from ESC.

Reported: 10/20/13 13:38 Printed: 10/20/13 13:38



12065 Lebanon Rd.
Mt. Juliet, TN 37122
(615) 758-5858
1-800-767-5859
Fax (615) 758-5859

Tax I.D. 62-0814289

Est. 1970

REPORT OF ANALYSIS

October 20, 2013

Charles Jensen
EnCana Oil & Gas - Rangely, CO
1125 Escalante Drive
Rangely, CO 81648-3600

Date Received : October 05, 2013
Description : 22-1 Site Clearance
Sample ID : 100313-22-1(BG2E) 6 IN
Collected By : Shad Johnson
Collection Date : 10/03/13 09:10

ESC Sample # : L661692-02

Site ID : 22-1

Project # : 22-1

Parameter	Result	Det. Limit	Units	Method	Date	Dil.
Arsenic	4.0	1.0	mg/kg	6010B	10/19/13	1

BDL - Below Detection Limit

Det. Limit - Practical Quantitation Limit(PQL)

Note:

The reported analytical results relate only to the sample submitted.

This report shall not be reproduced, except in full, without the written approval from ESC.

Reported: 10/20/13 13:38 Printed: 10/20/13 13:38



12065 Lebanon Rd.
Mt. Juliet, TN 37122
(615) 758-5858
1-800-767-5859
Fax (615) 758-5859

Tax I.D. 62-0814289

Est. 1970

REPORT OF ANALYSIS

Charles Jensen
EnCana Oil & Gas - Rangely, CO
1125 Escalante Drive
Rangely, CO 81648-3600

October 20, 2013

Date Received : October 05, 2013
Description : 22-1 Site Clearance
Sample ID : 100313-22-1(BG3S) 6 IN
Collected By : Shad Johnson
Collection Date : 10/03/13 09:20

ESC Sample # : L661692-03

Site ID : 22-1

Project # : 22-1

Parameter	Result	Det. Limit	Units	Method	Date	Dil.
Arsenic	4.9	1.0	mg/kg	6010B	10/19/13	1

BDL - Below Detection Limit

Det. Limit - Practical Quantitation Limit(PQL)

Note:

The reported analytical results relate only to the sample submitted.

This report shall not be reproduced, except in full, without the written approval from ESC.

Reported: 10/20/13 13:38 Printed: 10/20/13 13:38



12065 Lebanon Rd.
Mt. Juliet, TN 37122
(615) 758-5858
1-800-767-5859
Fax (615) 758-5859

Tax I.D. 62-0814289

Est. 1970

REPORT OF ANALYSIS

Charles Jensen
EnCana Oil & Gas - Rangely, CO
1125 Escalante Drive
Rangely, CO 81648-3600

October 20, 2013

Date Received : October 05, 2013
Description : 22-1 Site Clearance
Sample ID : 100313-22-1(BG4W) 6 IN
Collected By : Shad Johnson
Collection Date : 10/03/13 09:30

ESC Sample # : L661692-04

Site ID : 22-1
Project # : 22-1

Parameter	Result	Det. Limit	Units	Method	Date	Dil.
Arsenic	4.4	1.0	mg/kg	6010B	10/19/13	1

BDL - Below Detection Limit
Det. Limit - Practical Quantitation Limit(PQL)
Note:
The reported analytical results relate only to the sample submitted.
This report shall not be reproduced, except in full, without the written approval from ESC.
.
Reported: 10/20/13 13:38 Printed: 10/20/13 13:38

Summary of Remarks For Samples Printed
10/20/13 at 13:38:27

TSR Signing Reports: 358
R5 - Desired TAT

Sample: L661692-01 Account: ENCANRCO Received: 10/05/13 09:00 Due Date: 10/11/13 00:00 RPT Date: 10/20/13 13:38

Sample: L661692-02 Account: ENCANRCO Received: 10/05/13 09:00 Due Date: 10/11/13 00:00 RPT Date: 10/20/13 13:38

Sample: L661692-03 Account: ENCANRCO Received: 10/05/13 09:00 Due Date: 10/11/13 00:00 RPT Date: 10/20/13 13:38

Sample: L661692-04 Account: ENCANRCO Received: 10/05/13 09:00 Due Date: 10/11/13 00:00 RPT Date: 10/20/13 13:38

ENCANR-CO-RULEENG
Encana Oil & Gas
143 Diamond Avenue
Parachute, CO 81635
ENCANR-CO-RULEENG

Billing Information:
 Charles Jensen
 143 Diamond Ave
 Parachute, CO 81635

Report to: Charles Jensen
 Email to: Charles Jensen, Shad Johnson

Analysis/Container/Preservative

Chain of Custody
 Page 1 of 1



12065 Lebanon Road
 Mt. Juliet, TN 37122

Phone: (800) 767-5859
 Phone: (615) 758-5858
 Fax: (615) 758-5859

1082

CoCode ENCRCO (lab use only)

Template/Prelogin

Shipped Via:

Remarks/Contaminant Sample # (lab only)

Project Description: 22-1-Site Clearance		City/State: Collected:												
Phone: 970-285-2735	Client Project #: 22-1	ESC Key: ENCANR-CO-RULEENG												
FAX:	Site/Facility ID#: 22-1	P.O.#:												
Collected by: Shad Johnson														
Collected by (signature):	<input checked="" type="checkbox"/> Rush? (Lab MUST Be Notified) Same Day.....200% Next Day.....100% Two Day.....50% Three Day.....25%													
Immediately Packed on Ice N	Date Results Needed: Email? <input checked="" type="checkbox"/> No <input type="checkbox"/> Yes FAX? <input type="checkbox"/> No <input type="checkbox"/> Yes													
Sample ID	Comp/Grab	Matrix*	Depth	Date	Time	No. of Cntrs	BTXGRO / DRO - 8260/8015	SV8270PAHSIM - 8270SIM	SPCON - 9050AMod	SAR - Calc.	RCRA8 Metals + Cu, Ni, and Zn - 6010/7470	CR6SS - 3060A/7196	CR3 - Calc.	Arsenic
100313-22-1(BG1N);6"	Grab	SS	6"	10/03/13	0900	1								x
100313-22-1(BG2E);6"	Grab	SS	6"	10/03/13	0910	1								x
100313-22-1(BG3S);6"	Grab	SS	6"	10/03/13	0920	1								x
100313-22-1(BG4W);6"	Grab	SS	6"	10/03/13	0930	1								x

*Matrix: SS - Soil/Solid GW - Groundwater WW - WasteWater DW - Drinking Water OT - Other _____

Remarks:

pH _____ Temp _____

Flow _____ Other _____

5086 5826 0773

Relinquished by: (Signature)	Date: 10/4/13	Time: 1000	Received by: (Signature)	Samples returned via: <input checked="" type="checkbox"/> FedEx <input type="checkbox"/> UPS <input type="checkbox"/> Courier	Condition: (lab use only)
Relinquished by: (Signature)	Date:	Time:	Received by: (Signature)	Temp: 3.2	Bottles Received: 4 = 402
Relinquished by: (Signature)	Date:	Time:	Received for lab by: (Signature)	Date: 10-5-13	Time: 0900
				pH Checked:	NCF: