

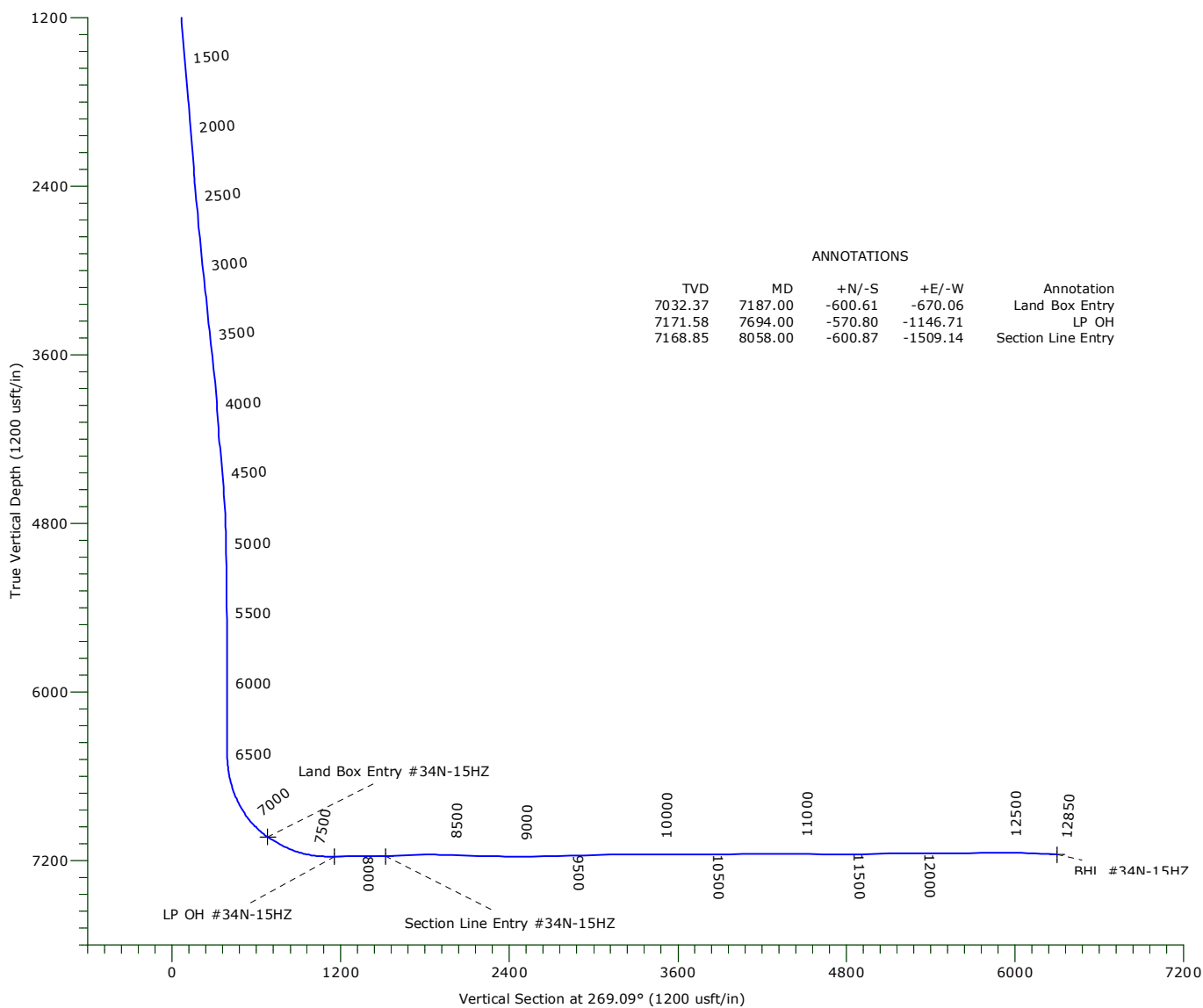
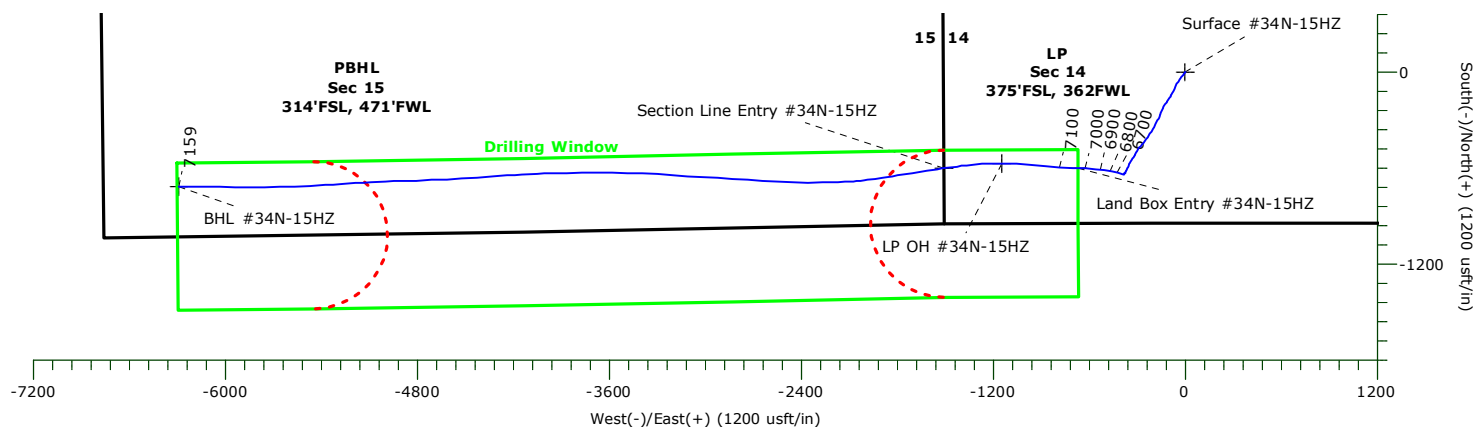


# US ROCKIES WATTENBERG PLANNING

Project: WELD-NAD83-UTMFT13N  
Site: 3N-68W-14 Docheff 19-14HZ  
Well: #34N-15HZ  
Wellbore: Original Hole  
Design: Original Hole



Precision  
Directional Services



Name	TVD	+N/-S	+E/-W	Northing	Easting	Latitude	Longitude	Shape
Surface #34N-15HZ	0.00	0.00	0.00	14607402.64	1647613.83	40.221526°N	104.974217°W	Point
Land Box Entry #34N-15HZ	7032.37	-600.61	-670.06	14606801.83	1646943.95	40.219877°N	104.976617°W	Point
BHL #34N-15HZ	7158.50	-716.39	-6289.36	14606684.42	1641324.68	40.219557°N	104.996747°W	Point
Section Line Entry #34N-15HZ	7168.85	-600.87	-1509.14	14606801.33	1646104.87	40.219876°N	104.979623°W	Point
LP OH #34N-15HZ	7171.58	-570.80	-1146.71	14606831.50	1646467.29	40.219958°N	104.978325°W	Point

# **US ROCKIES WATTENBERG PLANNING**

**WELD-NAD83-UTMFT13N  
3N-68W-14 Docheff 19-14HZ  
#34N-15HZ**

**Original Hole**

**Design: Original Hole**

## **Standard Survey Report**

**04 May, 2016**

# Precision Drilling Corporation

## Survey Report

<b>Company:</b>	US ROCKIES WATTENBERG PLANNING	<b>Local Co-ordinate Reference:</b>	Well #34N-15HZ
<b>Project:</b>	WELD-NAD83-UTMFT13N	<b>TVD Reference:</b>	4938'GL+20'KB @ 4958.00usft (PD461)
<b>Site:</b>	3N-68W-14 Docheff 19-14HZ	<b>MD Reference:</b>	4938'GL+20'KB @ 4958.00usft (PD461)
<b>Well:</b>	#34N-15HZ	<b>North Reference:</b>	True
<b>Wellbore:</b>	Original Hole	<b>Survey Calculation Method:</b>	Minimum Curvature
<b>Design:</b>	Original Hole	<b>Database:</b>	COMPASS_ROCKIES

<b>Project</b>	WELD-NAD83-UTMFT13N		
<b>Map System:</b>	Universal Transverse Mercator (US Survey Fee	<b>System Datum:</b>	Mean Sea Level
<b>Geo Datum:</b>	North American Datum 1983		
<b>Map Zone:</b>	Zone 13N (108 W to 102 W)		

Site	3N-68W-14 Docheff 19-14HZ				
Site Position:		Northing:	14,607,552.66 usft	Latitude:	40.221938°N
From:	Lat/Long	Easting:	1,647,614.62 usft	Longitude:	104.974214°W
Position Uncertainty:	0.00 usft	Slot Radius:	13.20 in	Grid Convergence:	0.02 °

Well		#34N-15HZ				
Well Position	+N-S	0.00 usft	Northing:	14,607,402.63 usft	Latitude:	40.221526°N
	+E-W	0.00 usft	Easting:	1,647,613.83 usft	Longitude:	104.974217°W
Position Uncertainty		3.28 usft	Wellhead Elevation:	0.00 usft	Ground Level:	4,938.00 usft

<b>Wellbore</b>	Original Hole				
-----------------	---------------	--	--	--	--

Magnetics	Model Name	Sample Date	Declination (°)	Dip Angle (°)	Field Strength (nT)
	IGRF2015	3/17/2016	8.44	66.71	52,419

<b>Design</b>	Original Hole				
---------------	---------------	--	--	--	--

<b>Audit Notes:</b>					
<b>Version:</b>	1.0	<b>Phase:</b>	ACTUAL	<b>Tie On Depth:</b>	0.00

Vertical Section:	Depth From (TVD) (usft)	+N/-S (usft)	+E/-W (usft)	Direction (°)
	0.00	0.00	0.00	269.09

Survey Program		Date 5/4/2016			
From (usft)	To (usft)	Survey (Wellbore)	Tool Name	Description	
212.00	12,784.00	Survey #1 (Original Hole)	APC_ISCWSA REV 2 MW	Fixed:v2:Rockies, crustal dec + 3-axis correction	
12,850.00	12,850.00	Survey #2 (Original Hole)	APC_BLIND	OWSG BLIND	

Survey									
Measured Depth (usft)	Inclination (°)	Azimuth (°)	Vertical Depth (usft)	+N/-S (usft)	+E/-W (usft)	Vertical Section (usft)	Dogleg Rate (°/100usft)	Build Rate (°/100usft)	Turn Rate (°/100usft)
0.00	0.00	0.00	0.00	0.00	0.00	0.00	0.00	0.00	0.00
212.00	0.26	204.50	212.00	-0.44	-0.20	0.21	0.12	0.12	0.00
305.00	1.58	213.46	304.99	-1.70	-0.99	1.02	1.42	1.42	9.63
399.00	2.64	218.38	398.92	-4.48	-3.05	3.12	1.14	1.13	5.23
493.00	3.96	225.24	492.76	-8.46	-6.70	6.84	1.46	1.40	7.30
587.00	5.63	215.04	586.43	-14.52	-11.65	11.88	1.99	1.78	-10.85
681.00	7.47	219.44	679.82	-23.02	-18.18	18.55	2.03	1.96	4.68
775.00	8.88	221.55	772.86	-33.17	-26.88	27.40	1.53	1.50	2.24
868.00	9.76	210.82	864.64	-45.31	-35.68	36.39	2.09	0.95	-11.54
962.00	10.38	208.36	957.19	-59.60	-43.78	44.72	0.80	0.66	-2.62

# Precision Drilling Corporation

## Survey Report

<b>Company:</b>	US ROCKIES WATTENBERG PLANNING	<b>Local Co-ordinate Reference:</b>	Well #34N-15HZ
<b>Project:</b>	WELD-NAD83-UTMFT13N	<b>TVD Reference:</b>	4938'GL+20'KB @ 4958.00usft (PD461)
<b>Site:</b>	3N-68W-14 Docheff 19-14HZ	<b>MD Reference:</b>	4938'GL+20'KB @ 4958.00usft (PD461)
<b>Well:</b>	#34N-15HZ	<b>North Reference:</b>	True
<b>Wellbore:</b>	Original Hole	<b>Survey Calculation Method:</b>	Minimum Curvature
<b>Design:</b>	Original Hole	<b>Database:</b>	COMPASS_ROCKIES

Survey									
Measured Depth (usft)	Inclination (°)	Azimuth (°)	Vertical Depth (usft)	+N/-S (usft)	+E/-W (usft)	Vertical Section (usft)	Dogleg Rate (°/100usft)	Build Rate (°/100usft)	Turn Rate (°/100usft)
1,057.00	11.26	207.84	1,050.50	-75.34	-52.18	53.37	0.93	0.93	-0.55
1,149.00	10.82	205.90	1,140.80	-91.05	-60.15	61.59	0.63	-0.48	-2.11
1,244.00	9.94	206.78	1,234.24	-106.39	-67.74	69.42	0.94	-0.93	0.93
1,338.00	8.62	206.78	1,327.01	-119.92	-74.57	76.46	1.40	-1.40	0.00
1,433.00	8.79	206.43	1,420.91	-132.78	-81.00	83.10	0.19	0.18	-0.37
1,526.00	9.94	210.12	1,512.67	-146.08	-88.20	90.50	1.39	1.24	3.97
1,619.00	8.97	214.87	1,604.41	-158.97	-96.37	98.88	1.34	-1.04	5.11
1,714.00	9.50	213.46	1,698.18	-171.59	-104.93	107.64	0.61	0.56	-1.48
1,809.00	8.71	214.87	1,791.98	-184.03	-113.36	116.27	0.86	-0.83	1.48
1,837.00	8.62	214.69	1,819.66	-187.50	-115.77	118.73	0.34	-0.32	-0.64
1,959.00	8.13	211.45	1,940.36	-202.37	-125.47	128.67	0.56	-0.40	-2.66
2,053.00	7.99	215.14	2,033.43	-213.39	-132.70	136.07	0.57	-0.15	3.93
2,148.00	9.09	205.11	2,127.38	-225.58	-139.68	143.25	1.94	1.16	-10.56
2,243.00	10.79	204.80	2,220.95	-240.45	-146.60	150.40	1.79	1.79	-0.33
2,338.00	9.67	197.09	2,314.45	-256.15	-152.68	156.72	1.86	-1.18	-8.12
2,432.00	12.48	201.61	2,406.69	-273.14	-158.74	163.06	3.13	2.99	4.81
2,527.00	12.58	209.83	2,499.43	-291.66	-167.66	172.28	1.88	0.11	8.65
2,621.00	11.78	203.73	2,591.32	-309.33	-176.62	181.51	1.61	-0.85	-6.49
2,715.00	11.03	204.32	2,683.46	-326.31	-184.18	189.34	0.81	-0.80	0.63
2,810.00	10.70	208.73	2,776.76	-342.32	-192.17	197.58	0.94	-0.35	4.64
2,903.00	10.91	213.42	2,868.12	-357.24	-201.16	206.81	0.97	0.23	5.04
2,997.00	10.30	212.58	2,960.51	-371.75	-210.59	216.46	0.67	-0.65	-0.89
3,092.00	10.55	216.77	3,053.94	-385.87	-220.37	226.47	0.84	0.26	4.41
3,187.00	10.65	214.72	3,147.32	-400.05	-230.57	236.90	0.41	0.11	-2.16
3,281.00	9.37	211.38	3,239.89	-413.72	-239.51	246.05	1.49	-1.36	-3.55
3,376.00	10.50	219.17	3,333.47	-427.04	-249.00	255.75	1.85	1.19	8.20
3,472.00	8.86	215.33	3,428.10	-439.85	-258.80	265.75	1.84	-1.71	-4.00
3,566.00	9.79	222.68	3,520.86	-451.63	-268.41	275.54	1.61	0.99	7.82
3,660.00	9.75	219.96	3,613.50	-463.61	-278.94	286.26	0.49	-0.04	-2.89
3,754.00	9.77	216.88	3,706.14	-476.09	-288.83	296.36	0.56	0.02	-3.28
3,848.00	9.47	216.74	3,798.81	-488.67	-298.25	305.97	0.32	-0.32	-0.15
3,943.00	9.29	205.60	3,892.55	-501.85	-306.23	314.17	1.92	-0.19	-11.73
4,038.00	8.03	203.06	3,986.47	-514.87	-312.15	320.28	1.39	-1.33	-2.67
4,133.00	7.14	211.84	4,080.64	-525.99	-317.86	326.17	1.54	-0.94	9.24
4,226.00	8.18	213.98	4,172.81	-536.39	-324.61	333.09	1.16	1.12	2.30
4,320.00	9.96	215.54	4,265.63	-548.55	-333.07	341.74	1.91	1.89	1.66
4,414.00	10.12	210.88	4,358.19	-562.25	-342.04	350.92	0.88	0.17	-4.96
4,508.00	8.51	206.10	4,450.95	-575.58	-349.33	358.43	1.90	-1.71	-5.09
4,603.00	8.95	208.00	4,544.85	-588.42	-355.90	365.20	0.55	0.46	2.00
4,697.00	7.53	206.18	4,637.88	-600.41	-362.05	371.54	1.54	-1.51	-1.94
4,792.00	7.11	207.74	4,732.10	-611.19	-367.53	377.19	0.49	-0.44	1.64
4,885.00	6.03	195.46	4,824.49	-621.00	-371.51	381.33	1.90	-1.16	-13.20
4,979.00	3.29	201.70	4,918.17	-628.26	-373.83	383.76	2.96	-2.91	6.64

# Precision Drilling Corporation

## Survey Report

<b>Company:</b>	US ROCKIES WATTENBERG PLANNING	<b>Local Co-ordinate Reference:</b>	Well #34N-15HZ
<b>Project:</b>	WELD-NAD83-UTMFT13N	<b>TVD Reference:</b>	4938'GL+20'KB @ 4958.00usft (PD461)
<b>Site:</b>	3N-68W-14 Docheff 19-14HZ	<b>MD Reference:</b>	4938'GL+20'KB @ 4958.00usft (PD461)
<b>Well:</b>	#34N-15HZ	<b>North Reference:</b>	True
<b>Wellbore:</b>	Original Hole	<b>Survey Calculation Method:</b>	Minimum Curvature
<b>Design:</b>	Original Hole	<b>Database:</b>	COMPASS_ROCKIES

### Survey

Measured Depth (usft)	Inclination (°)	Azimuth (°)	Vertical Depth (usft)	+N/S (usft)	+E/W (usft)	Vertical Section (usft)	Dogleg Rate (°/100usft)	Build Rate (°/100usft)	Turn Rate (°/100usft)
5,074.00	0.87	202.44	5,013.10	-631.46	-375.11	385.09	2.55	-2.55	0.78
5,168.00	0.73	220.39	5,107.10	-632.58	-375.77	385.77	0.30	-0.15	19.10
5,262.00	0.61	231.97	5,201.09	-633.34	-376.55	386.56	0.19	-0.13	12.32
5,356.00	0.67	247.13	5,295.08	-633.87	-377.45	387.47	0.19	0.06	16.13
5,451.00	0.69	261.48	5,390.08	-634.17	-378.53	388.55	0.18	0.02	15.11
5,544.00	0.70	271.27	5,483.07	-634.24	-379.65	389.68	0.13	0.01	10.53
5,636.00	1.17	296.94	5,575.06	-633.80	-381.05	391.07	0.67	0.51	27.90
5,731.00	0.74	176.46	5,670.05	-633.97	-381.88	391.90	1.76	-0.45	-126.82
5,825.00	1.03	172.72	5,764.04	-635.42	-381.73	391.78	0.31	0.31	-3.98
5,917.00	0.84	175.30	5,856.03	-636.91	-381.57	391.64	0.21	-0.21	2.80
6,011.00	0.39	170.82	5,950.02	-637.91	-381.46	391.55	0.48	-0.48	-4.77
6,105.00	0.30	190.22	6,044.02	-638.47	-381.46	391.55	0.16	-0.10	20.64
6,197.00	0.25	184.60	6,136.02	-638.91	-381.52	391.62	0.06	-0.05	-6.11
6,290.00	0.20	208.83	6,229.02	-639.25	-381.61	391.72	0.11	-0.05	26.05
6,382.00	0.11	241.46	6,321.02	-639.43	-381.77	391.87	0.13	-0.10	35.47
6,477.00	0.08	294.30	6,416.02	-639.45	-381.91	392.01	0.09	-0.03	55.62
6,572.00	4.16	279.39	6,510.93	-638.86	-385.37	395.47	4.30	4.29	-15.69
6,666.00	12.13	283.74	6,603.91	-635.95	-398.35	408.40	8.50	8.48	4.63
6,759.00	19.26	285.65	6,693.39	-629.49	-422.64	432.58	7.69	7.67	2.05
6,852.00	26.61	281.48	6,778.98	-621.19	-457.87	467.68	8.09	7.90	-4.48
6,947.00	33.10	278.61	6,861.33	-613.06	-504.42	514.09	6.99	6.83	-3.02
7,040.00	41.57	274.81	6,935.22	-606.66	-560.38	569.95	9.43	9.11	-4.09
7,133.00	50.47	272.72	6,999.74	-602.36	-627.09	636.58	9.70	9.57	-2.25
7,227.00	58.61	271.48	7,054.23	-599.60	-703.54	712.97	8.73	8.66	-1.32
7,321.00	64.17	273.93	7,099.23	-595.66	-785.93	795.29	6.34	5.91	2.61
7,415.00	70.59	275.16	7,135.36	-588.77	-872.37	881.61	6.94	6.83	1.31
7,508.00	79.74	275.50	7,159.15	-580.42	-961.79	970.89	9.85	9.84	0.37
7,600.00	86.47	273.18	7,170.19	-573.53	-1,052.80	1,061.78	7.73	7.32	-2.52
7,694.00	91.83	270.15	7,171.58	-570.80	-1,146.71	1,155.63	6.55	5.70	-3.22
7,788.00	90.70	266.87	7,169.51	-573.24	-1,240.64	1,249.59	3.69	-1.20	-3.49
7,882.00	89.06	264.56	7,169.70	-580.27	-1,334.37	1,343.42	3.01	-1.74	-2.46
7,975.00	90.66	262.92	7,169.93	-590.41	-1,426.81	1,436.00	2.46	1.72	-1.76
8,069.00	90.85	262.55	7,168.69	-602.29	-1,520.04	1,529.42	0.44	0.20	-0.39
8,163.00	92.26	261.13	7,166.14	-615.63	-1,613.05	1,622.63	2.13	1.50	-1.51
8,257.00	92.95	260.57	7,161.87	-630.56	-1,705.76	1,715.56	0.94	0.73	-0.60
8,351.00	90.82	259.77	7,158.78	-646.60	-1,798.32	1,808.37	2.42	-2.27	-0.85
8,445.00	88.39	261.36	7,159.43	-662.01	-1,891.04	1,901.32	3.09	-2.59	1.69
8,539.00	89.04	262.95	7,161.53	-674.83	-1,984.13	1,994.60	1.83	0.69	1.69
8,632.00	88.06	266.61	7,163.89	-683.29	-2,076.70	2,087.29	4.07	-1.05	3.94
8,727.00	88.27	267.77	7,166.93	-687.95	-2,171.54	2,182.19	1.24	0.22	1.22
8,821.00	89.09	269.93	7,169.10	-689.83	-2,265.49	2,276.16	2.46	0.87	2.30
8,915.00	87.83	269.76	7,171.62	-690.09	-2,359.45	2,370.11	1.35	-1.34	-0.18
9,008.00	89.37	271.00	7,173.89	-689.47	-2,452.42	2,463.06	2.13	1.66	1.33

# Precision Drilling Corporation

## Survey Report

<b>Company:</b>	US ROCKIES WATTENBERG PLANNING	<b>Local Co-ordinate Reference:</b>	Well #34N-15HZ
<b>Project:</b>	WELD-NAD83-UTMFT13N	<b>TVD Reference:</b>	4938'GL+20'KB @ 4958.00usft (PD461)
<b>Site:</b>	3N-68W-14 Docheff 19-14HZ	<b>MD Reference:</b>	4938'GL+20'KB @ 4958.00usft (PD461)
<b>Well:</b>	#34N-15HZ	<b>North Reference:</b>	True
<b>Wellbore:</b>	Original Hole	<b>Survey Calculation Method:</b>	Minimum Curvature
<b>Design:</b>	Original Hole	<b>Database:</b>	COMPASS_ROCKIES

### Survey

Measured Depth (usft)	Inclination (°)	Azimuth (°)	Vertical Depth (usft)	+N/S (usft)	+E/W (usft)	Vertical Section (usft)	Dogleg Rate (°/100usft)	Build Rate (°/100usft)	Turn Rate (°/100usft)
9,103.00	91.61	273.10	7,173.08	-686.07	-2,547.34	2,557.91	3.23	2.36	2.21
9,197.00	91.06	273.29	7,170.89	-680.83	-2,641.17	2,651.65	0.62	-0.59	0.20
9,290.00	92.21	274.21	7,168.24	-674.75	-2,733.93	2,744.30	1.58	1.24	0.99
9,385.00	91.11	274.68	7,165.49	-667.40	-2,828.60	2,838.84	1.26	-1.16	0.49
9,479.00	91.33	272.68	7,163.48	-661.36	-2,922.38	2,932.52	2.14	0.23	-2.13
9,573.00	91.47	273.44	7,161.19	-656.35	-3,016.22	3,026.26	0.82	0.15	0.81
9,668.00	91.03	273.65	7,159.12	-650.47	-3,111.01	3,120.95	0.51	-0.46	0.22
9,762.00	90.51	274.12	7,157.85	-644.11	-3,204.79	3,214.61	0.75	-0.55	0.50
9,856.00	90.19	273.89	7,157.28	-637.54	-3,298.56	3,308.27	0.42	-0.34	-0.24
9,951.00	90.04	271.72	7,157.09	-632.89	-3,393.44	3,403.06	2.29	-0.16	-2.28
10,046.00	89.33	271.50	7,157.61	-630.22	-3,488.40	3,497.97	0.78	-0.75	-0.23
10,139.00	89.64	270.54	7,158.45	-628.57	-3,581.38	3,590.91	1.08	0.33	-1.03
10,233.00	89.79	270.05	7,158.91	-628.08	-3,675.38	3,684.89	0.55	0.16	-0.52
10,327.00	90.33	269.23	7,158.81	-628.67	-3,769.37	3,778.88	1.04	0.57	-0.87
10,422.00	91.22	269.04	7,157.53	-630.11	-3,864.35	3,873.87	0.96	0.94	-0.20
10,516.00	90.84	268.45	7,155.84	-632.17	-3,958.31	3,967.85	0.75	-0.40	-0.63
10,609.00	91.39	267.43	7,154.03	-635.51	-4,051.23	4,060.82	1.25	0.59	-1.10
10,702.00	90.85	267.23	7,152.21	-639.84	-4,144.12	4,153.75	0.62	-0.58	-0.22
10,797.00	90.25	265.99	7,151.30	-645.46	-4,238.94	4,248.66	1.45	-0.63	-1.31
10,892.00	90.12	265.90	7,150.99	-652.18	-4,333.70	4,343.52	0.17	-0.14	-0.09
10,986.00	89.15	265.94	7,151.59	-658.86	-4,427.46	4,437.37	1.03	-1.03	0.04
11,080.00	89.19	266.25	7,152.95	-665.26	-4,521.23	4,531.23	0.33	0.04	0.33
11,175.00	88.66	266.40	7,154.74	-671.35	-4,616.02	4,626.10	0.58	-0.56	0.16
11,270.00	89.42	268.25	7,156.33	-675.79	-4,710.90	4,721.04	2.11	0.80	1.95
11,366.00	89.89	268.46	7,156.91	-678.54	-4,806.86	4,817.03	0.54	0.49	0.22
11,461.00	92.30	268.45	7,155.09	-681.10	-4,901.80	4,912.00	2.54	2.54	-0.01
11,556.00	91.12	267.17	7,152.26	-684.73	-4,996.69	5,006.93	1.83	-1.24	-1.35
11,651.00	91.22	267.73	7,150.32	-688.96	-5,091.57	5,101.87	0.60	0.11	0.59
11,746.00	90.18	266.48	7,149.16	-693.75	-5,186.44	5,196.80	1.71	-1.09	-1.32
11,840.00	89.40	265.61	7,149.50	-700.24	-5,280.21	5,290.67	1.24	-0.83	-0.93
11,935.00	90.56	266.79	7,149.53	-706.53	-5,375.00	5,385.54	1.74	1.22	1.24
12,030.00	89.92	267.21	7,149.14	-711.50	-5,469.87	5,480.48	0.81	-0.67	0.44
12,125.00	90.16	267.76	7,149.07	-715.67	-5,564.78	5,575.44	0.63	0.25	0.58
12,219.00	91.06	269.03	7,148.07	-718.31	-5,658.73	5,669.43	1.66	0.96	1.35
12,312.00	90.65	269.64	7,146.68	-719.39	-5,751.71	5,762.41	0.79	-0.44	0.66
12,406.00	90.44	269.73	7,145.79	-719.90	-5,845.71	5,856.41	0.24	-0.22	0.10
12,500.00	89.91	270.69	7,145.50	-719.56	-5,939.71	5,950.39	1.17	-0.56	1.02
12,594.00	89.05	270.74	7,146.35	-718.38	-6,033.69	6,044.34	0.92	-0.91	0.05
12,686.00	87.69	270.48	7,148.97	-717.41	-6,125.65	6,136.27	1.51	-1.48	-0.28
12,784.00	86.22	270.30	7,154.17	-716.74	-6,223.51	6,234.10	1.51	-1.50	-0.18
12,850.00	86.22	270.30	7,158.53	-716.39	-6,289.36	6,299.95	0.00	0.00	0.00

# Precision Drilling Corporation

## Survey Report

<b>Company:</b>	US ROCKIES WATTENBERG PLANNING	<b>Local Co-ordinate Reference:</b>	Well #34N-15HZ
<b>Project:</b>	WELD-NAD83-UTMFT13N	<b>TVD Reference:</b>	4938'GL+20'KB @ 4958.00usft (PD461)
<b>Site:</b>	3N-68W-14 Docheff 19-14HZ	<b>MD Reference:</b>	4938'GL+20'KB @ 4958.00usft (PD461)
<b>Well:</b>	#34N-15HZ	<b>North Reference:</b>	True
<b>Wellbore:</b>	Original Hole	<b>Survey Calculation Method:</b>	Minimum Curvature
<b>Design:</b>	Original Hole	<b>Database:</b>	COMPASS_ROCKIES

### Design Targets

#### Target Name

- hit/miss target - Shape	Dip Angle (°)	Dip Dir. (°)	TVD (usft)	+N/-S (usft)	+E/-W (usft)	Northing (usft)	Easting (usft)	Latitude	Longitude
Surface #34N-15HZ - actual wellpath hits target center - Point	0.00	0.00	0.00	0.00	0.00	14,607,402.63	1,647,613.83	40.221526°N	104.974217°W
Land Box Entry #34N- - actual wellpath misses target center by 0.01usft at 7187.00usft MD (7032.38 TVD, -600.61 N, -670.06 E) - Point	0.00	0.00	7,032.37	-600.61	-670.06	14,606,801.83	1,646,943.94	40.219877°N	104.976618°W
BHL #34N-15HZ - actual wellpath misses target center by 0.03usft at 12850.00usft MD (7158.53 TVD, -716.39 N, -6289.36 E) - Point	0.00	0.00	7,158.50	-716.39	-6,289.36	14,606,684.41	1,641,324.68	40.219557°N	104.996748°W
Section Line Entry #3- - actual wellpath hits target center - Point	0.00	0.00	7,168.85	-600.87	-1,509.14	14,606,801.32	1,646,104.86	40.219876°N	104.979623°W
LP OH #34N-15HZ - actual wellpath hits target center - Point	0.00	0.00	7,171.58	-570.80	-1,146.71	14,606,831.50	1,646,467.29	40.219959°N	104.978325°W

### Design Annotations

Measured Depth (usft)	Vertical Depth (usft)	Local Coordinates		Comment
		+N/-S (usft)	+E/-W (usft)	
7,187.00	7,032.37	-600.61	-670.06	Land Box Entry
7,694.00	7,171.58	-570.80	-1,146.71	LP OH
8,058.00	7,168.85	-600.87	-1,509.14	Section Line Entry

Checked By: _____	Approved By: _____	Date: _____
-------------------	--------------------	-------------