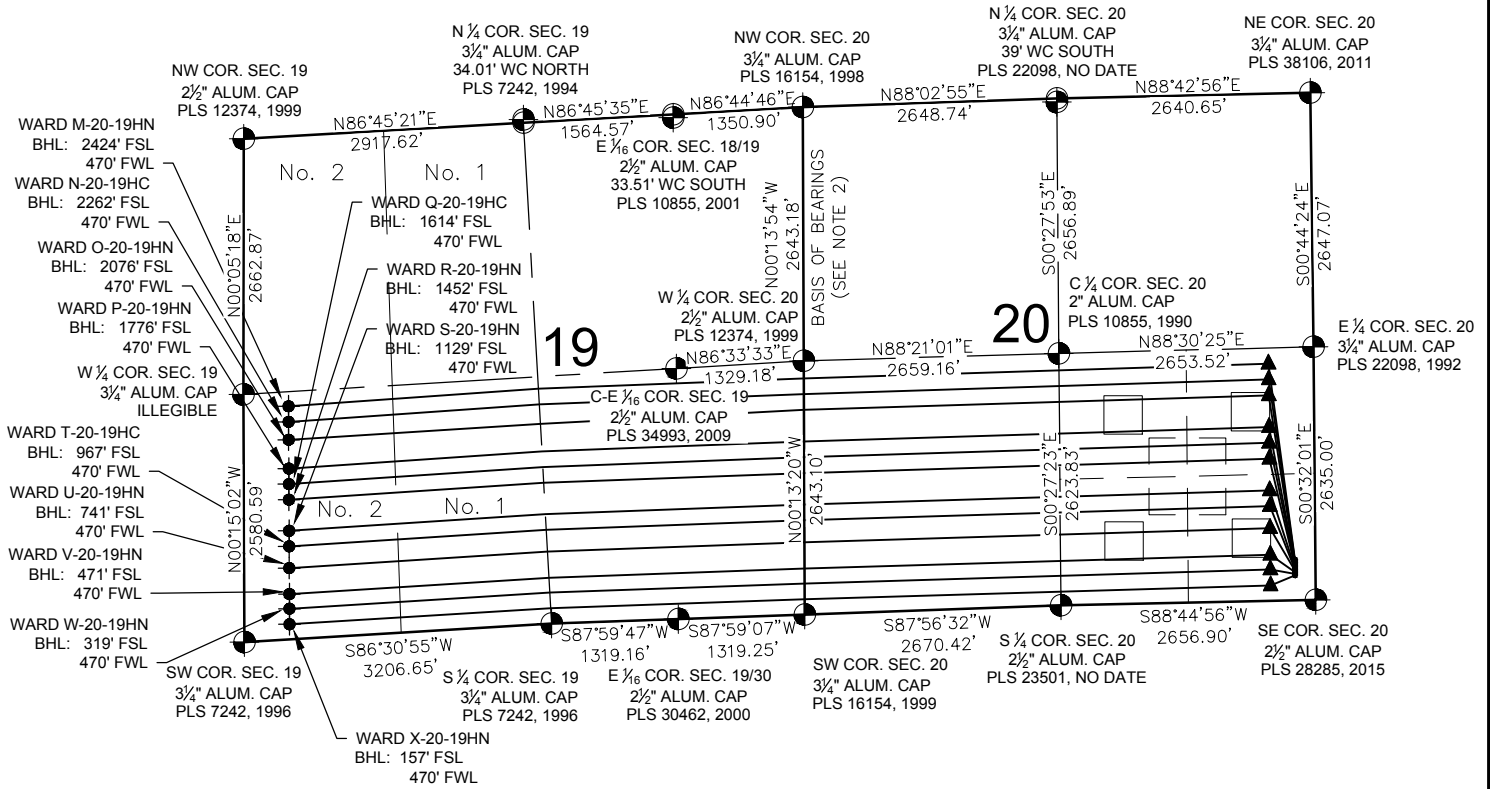


WARD 20-M PAD MULTI-WELL PLAN



NOTES:

- WARD M-20-19HN TO BE AT 424' FSL & 213' FEL.
BOTTOM HOLE AT 2424' FSL & 470' FWL, SEC. 19.
- WARD N-20-19HC TO BE AT 409' FSL & 213' FEL.
BOTTOM HOLE AT 2262' FSL & 470' FWL, SEC. 19.
- WARD O-20-19HN TO BE AT 394' FSL & 213' FEL.
BOTTOM HOLE AT 2076' FSL & 470' FWL, SEC. 19.
- WARD P-20-19HN TO BE AT 379' FSL & 213' FEL.
BOTTOM HOLE AT 1776' FSL & 470' FWL, SEC. 19.
- WARD Q-20-19HC TO BE AT 364' FSL & 213' FEL.
BOTTOM HOLE AT 1614' FSL & 470' FWL, SEC. 19.
- WARD R-20-19HN TO BE AT 349' FSL & 213' FEL.
BOTTOM HOLE AT 1452' FSL & 470' FWL, SEC. 19.
- WARD S-20-19HN TO BE AT 334' FSL & 213' FEL.
BOTTOM HOLE AT 1129' FSL & 470' FWL, SEC. 19.
- WARD T-20-19HC TO BE AT 319' FSL & 213' FEL.
BOTTOM HOLE AT 967' FSL & 470' FWL, SEC. 19.
- WARD U-20-19HN TO BE AT 304' FSL & 213' FEL.
BOTTOM HOLE AT 741' FSL & 470' FWL, SEC. 19.
- WARD V-20-19HN TO BE AT 289' FSL & 213' FEL.
BOTTOM HOLE AT 471' FSL & 470' FWL, SEC. 19.
- WARD W-20-19HC TO BE AT 274' FSL & 213' FEL.
BOTTOM HOLE AT 319' FSL & 470' FWL, SEC. 19.
- WARD X-20-19HN TO BE AT 259' FSL & 213' FEL.
BOTTOM HOLE AT 157' FSL & 470' FWL, SEC. 19.

LEGEND

- = EXISTING MONUMENT ◆ = BOTTOM HOLE
- = CALCULATED POSITION ▲ = LANDING POINT
- = PROPOSED WELL LP = LANDING POINT
- ◆ = EXISTING WELL BHL = BOTTOM HOLE

NOTES:

1. THIS FIELD SURVEY CONFORMS TO THE MINIMUM STANDARDS SET BY THE C.O.G.C.C., RULE NO. 215
2. BEARINGS ARE BASED UPON THE ASSUMPTION THAT THE WEST LINE OF THE NORTHWEST QUARTER OF SECTION 20, BEARS N00°13'54"W BETWEEN THE MONUMENTS SHOWN HEREON.
3. GRID DISTANCES ARE SHOWN, AS GPS MEASURED IN THE FIELD, WITH TIES TO WELLS MEASURED PERPENDICULAR TO SECTION LINES. TO GET GROUND DISTANCES MULTIPLY THE SHOWN DISTANCE BY 1.000257471.
4. FIELD VERIFICATION OF MONUMENTS COMPLETED WITHIN 1 YEAR OF SIGNATURE DATE.

PREPARED BY: PFS Petroleum Field Services, LLC 7535 Hilltop Circle Denver, CO 80221	FIELD DATE: 10-19-15	SITE NAME: WARD 20-M PAD	PREPARED FOR: BAYSWATER EXPLORATION AND PRODUCTION, LLC	
	DRAWING DATE: 02-16-16	SURFACE LOCATION: SE 1/4 SE 1/4 SEC. 20, T6N, R66W, 6TH P.M.		
	BY: KAD	CHECKED BY: JLW	WELD COUNTY, COLORADO	