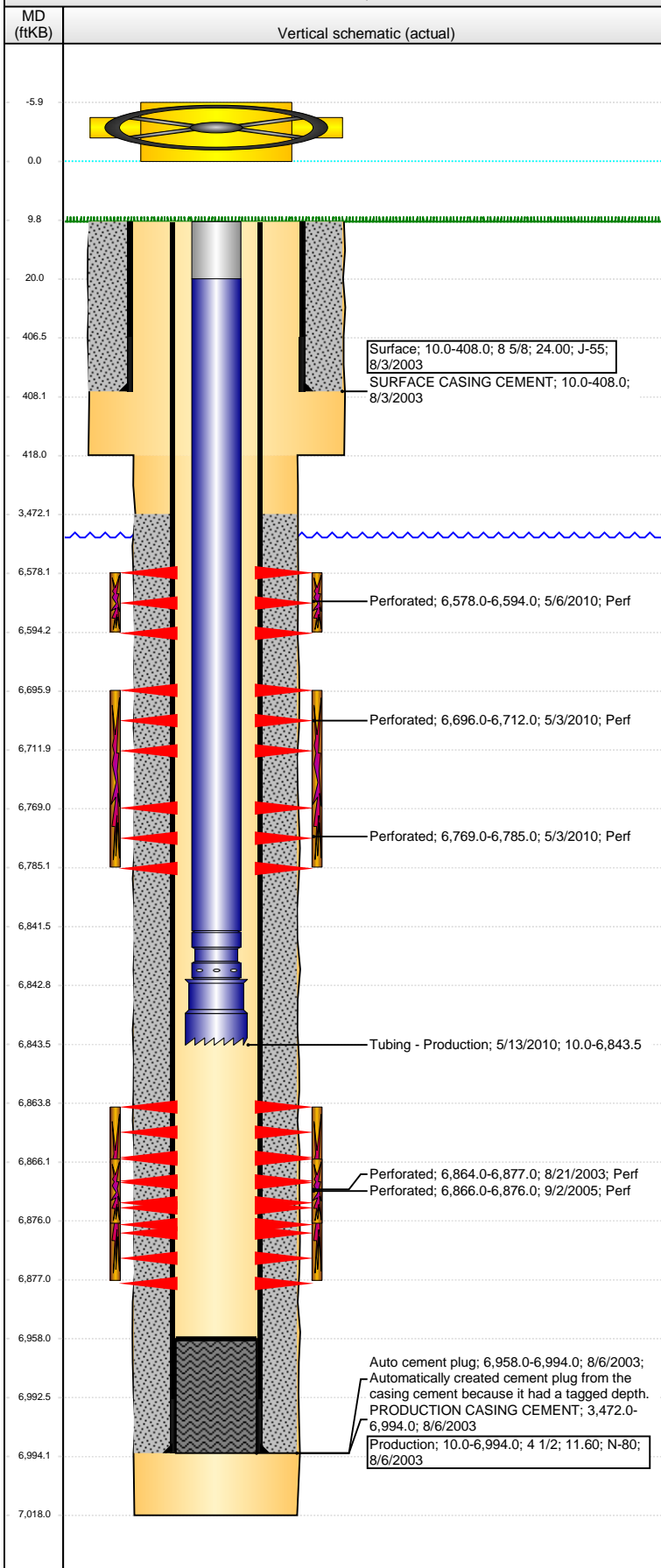


Well Name: FURROW 14-31

VERTICAL - ORIGINAL HOLE, 7/5/2016 9:54:37 AM



Well Header									
API 05-123-21569		Business Unit DJ BASIN		District 15		Well Config VERTICAL			
Original KB Elevation (ft) 4,726		KB - GL / MSL (ftKB) 10.00		Spud Date 8/2/2003		P & A Date			
Comment									
Directions To Well HWY 292 & WCR 57: EAST 0.1, NORTH 0.2 TO GREEN GATES, NORTHEAST 0.2 MILES, NW 0.1 INTO LOCATION.									
Congressional Location									
Quarter 1	Quarter 2	Quarter 3	Quarter 4	Section	Township	Twnshp N...	Range	Rng E/W Dir	
		NE	SW	14	6	N	64	W	
Bottom Hole Location									
North-South Distance (ft)		From N or S Line		East-West Distance (ft)			From E or W Line		
Plug Back Total Depths									
Date	Depth (ftKB)	Method			Com				
8/7/2003	6,958.0	CASING TALLY			FLOAT SHOE				
8/15/2003	6,951.0	CASED HOLE LOG			DEPTH-LOGGER/CBL				
5/13/2010	6,958.0	TUBING TALLY			DRILL 2 COMPOSITE PLUGS W/ VAREL BIT AND...				
Wellbore Sections									
Section Des			Size (in)		Act Top, MD (ftKB)		Act Btm, MD (ftKB)		
SURFACE			12 1/4		10		418		
PRODUCTION			7 7/8		418		7,018		
Zone Statuses									
Zone Name		Status Date	Status	Fluid Type	Job	Prod Method			
CODELL		9/4/2003	PR	Oil	DRILLING/CO...				
CODELL		9/21/2005	PR	Oil	RE-FRAC, 8/29...				
NIOBRARA		5/18/2010	PR		RECOMPLETI...				
Casing Strings									
Surface, 408.0ftKB									
Casing Description		Run Date	OD (in)	Wt/Len (l...	Grade	Top, MD (ft...	MD (ftKB)		
Surface		8/3/2003	8 5/8	24.00	J-55	10.0	408.0		
Production, 6,994.0ftKB									
Casing Description		Run Date	OD (in)	Wt/Len (l...	Grade	Top, MD (ft...	MD (ftKB)		
Production		8/6/2003	4 1/2	11.60	N-80	10.0	6,994.0		
Cement									
Description					Top Depth (ftKB)		Bottom Depth (ftKB)		
SURFACE CASING CEMENT					10.0		408.0		
Description					Top Depth (ftKB)		Bottom Depth (ftKB)		
PRODUCTION CASING CEMENT					3,472.0		6,994.0		
Tubing Strings									
Tubing Description		Run Date	String...	ID (in)	Wt (lb/ft)	Grade	Len (ft)	Set De...	
Tubing - Production		9/15/2005	2 3/8	1.995	4.70	J-55	6,839.00		
Tubing Description		Run Date	String...	ID (in)	Wt (lb/ft)	Grade	Len (ft)	Set De...	
Tubing - Production		5/13/2010	2 3/8	1.995	4.70	J-55	6,833.51		
Tubing Components									
Item Des		OD (in)	Wt (lb/ft)	Grade	Jts	Len (ft)	Btm (ftKB)	Btm (TVD) (ftKB)	
Tubing Pup Joint		2 3/8	4.70	J-55	1	10.00	20.0		
Tubing		2 3/8	4.70	J-55	228	6,821.61	6,841.6		
Pump Seating		2 3/8			1	1.10	6,842.7		
Nipple									
Pump off bit sub		3.05			1	0.80	6,843.5		
Perforation Data									
Zone		Bnch/St g	Entered Shot Total	Top (ftKB)		Btm (ftKB)		Date	
NIOBRARA, ORIGINAL HOLE		A	32	6,578.00		6,594.00		5/6/2010	
NIOBRARA, ORIGINAL HOLE		B	32	6,696.00		6,712.00		5/3/2010	
NIOBRARA, ORIGINAL HOLE		C	32	6,769.00		6,785.00		5/3/2010	
CODELL, ORIGINAL HOLE			52	6,864.00		6,877.00		8/21/2003	
CODELL, ORIGINAL HOLE			40	6,866.00		6,876.00		9/2/2005	

Well Name: FURROW 14-31

VERTICAL - ORIGINAL HOLE, 7/5/2016 9:54:40 AM

Stimulations & Treatments

Date 8/22/2003	Zone CODELL, ORIGINAL HOLE	Primary Job Type DRILLING/COMPLETION - ORIGINAL
Technical Result	Tech Result Details	Tech Result Note
Comment		
Date 9/12/2005	Zone CODELL, ORIGINAL HOLE	Primary Job Type RE-FRAC
Technical Result	Tech Result Details	Tech Result Note
Comment		
Date 5/6/2010	Zone NIOBRARA, ORIGINAL HOLE	Primary Job Type RECOMPLETION
Technical Result Success	Tech Result Details According to Plan	Tech Result Note
Comment (NIOBRARA BC): PHAZER FRAC FLUID, JOB WENT WELL WITH NO ISSUES TO REPORT.		
Date 5/6/2010	Zone NIOBRARA, ORIGINAL HOLE	Primary Job Type RECOMPLETION
Technical Result Success	Tech Result Details According to Plan	Tech Result Note
Comment (NIOBRARA A): PHAZER FRAC FLUID, JOB WENT WELL WITH NO ISSUES TO REPORT.		

Other In Hole

Run Date	Des	OD (in)	Top (ftKB)	Btm (ftKB)

Logs

Date	Type	Top, MD (ftKB)	Btm, MD (ftKB)
8/6/2003	COMPENSATED DENSITY	3,500.0	6,985.0
8/6/2003	INDUCTION	408.0	7,005.0
8/15/2003	CEMENT BOND	3,230.0	6,947.0
3/30/2015	GYRO	10.0	6,750.0

