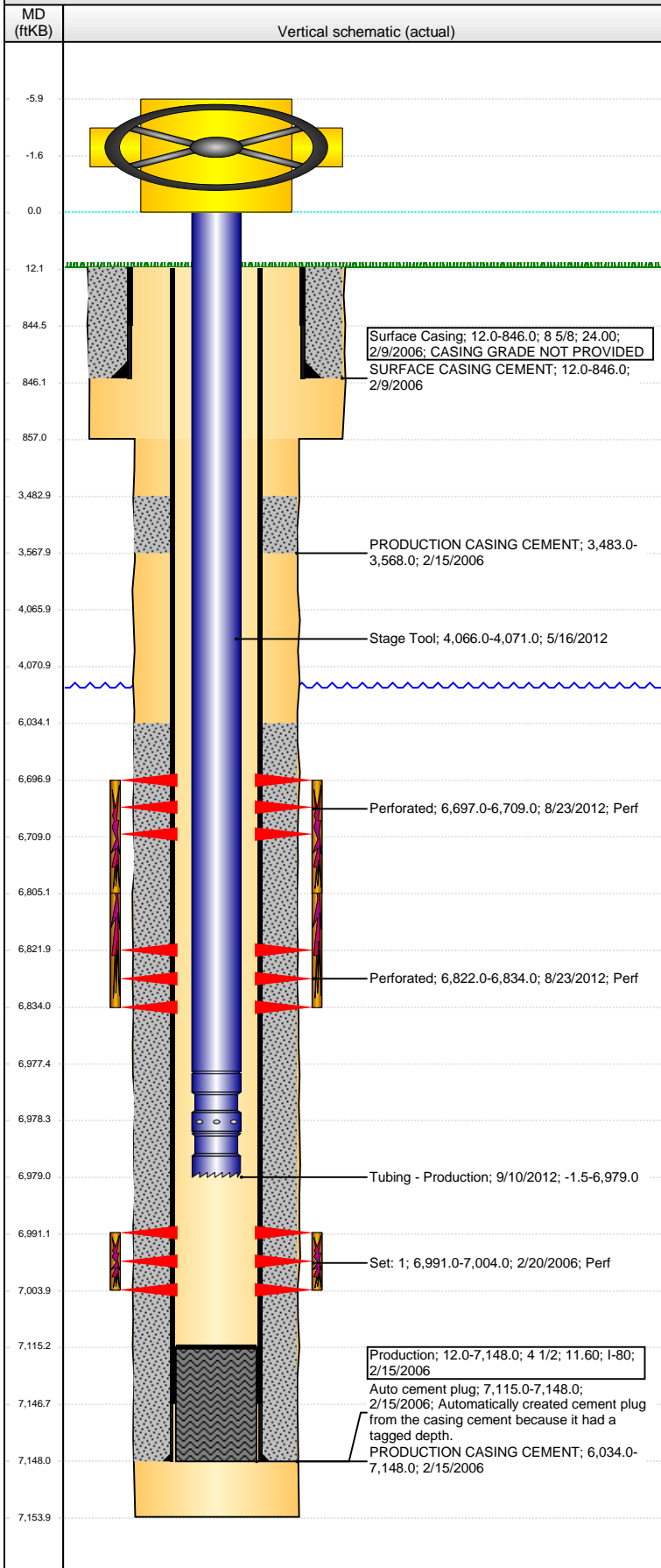


# Wellbore Schematic Input Report

Well Name: KERBS 22-15

VERTICAL - ORIGINAL HOLE, 7/5/2016 9:55:46 AM



## Well Header

API	Business Unit	District	Well Config
05-123-23548	DJ BASIN	15	VERTICAL
Original KB Elevation (ft)	KB - GL / MSL (ftKB)	Spud Date	P & A Date
4,818	12.00	2/9/2006	
Comment			

## Directions To Well

WCR 55 and WCR 70 E. 4/10, S.E. 500', S. 3/10, W 4/10 into

## Congressional Location

Quarter 1	Quarter 2	Quarter 3	Quarter 4	Section	Township	Twnshp N...	Range	Rng E/W Dir
		SE	NW	15	6	N	64	W

## Bottom Hole Location

North-South Distance (ft)	From N or S Line	East-West Distance (ft)	From E or W Line

## Plug Back Total Depths

Date	Depth (ftKB)	Method	Com
2/14/2006	7,147.0	CASING TALLY	LATCH DOWN COLLAR
2/20/2006	7,115.0	CASED HOLE LOG	DEPTH LOGGER
10/31/2006	7,113.0	TAG	CLEANED OUT FILL TO 7113'
7/19/2012	7,115.0	TUBING TAG	CLEANED OUT BEFORE FRAC.

## Wellbore Sections

Section Des	Size (in)	Act Top, MD (ftKB)	Act Btm, MD (ftKB)
SURFACE	12 1/4	12	857
PRODUCTION	7 7/8	857	7,154

## Zone Statuses

Zone Name	Status Date	Status	Fluid Type	Job	Prod Method
CODELL	3/27/2006	PR		DRILLING/CO...	
CODELL	8/24/2012	PR		RE-FRAC & R...	
NIOBRARA	8/24/2012	PR		RE-FRAC & R...	

## Casing Strings

### Surface Casing, 846.0ftKB

Casing Description	Run Date	OD (in)	Wt/Len (l...	Grade	Top, MD (ft...	MD (ftKB)
Surface Casing	2/9/2006	8 5/8	24.00		12.0	846.0

### Production, 7,148.0ftKB

Casing Description	Run Date	OD (in)	Wt/Len (l...	Grade	Top, MD (ft...	MD (ftKB)
Production	2/15/2006	4 1/2	11.60	I-80	12.0	7,148.0

## Cement

Description	Top Depth (ftKB)	Bottom Depth (ftKB)
SURFACE CASING CEMENT	12.0	846.0
Description	Top Depth (ftKB)	Bottom Depth (ftKB)
PRODUCTION CASING CEMENT	3,483.0	3,568.0
Description	Top Depth (ftKB)	Bottom Depth (ftKB)
PRODUCTION CASING CEMENT	6,034.0	7,148.0

## Tubing Strings

Tubing Description	Run Date	String...	ID (in)	Wt (lb/ft)	Grade	Len (ft)	Set De...
Tubing	10/31/2006	2 3/8	1.995	4.70	J-55	6,944.96	
Tubing Description	Run Date	String...	ID (in)	Wt (lb/ft)	Grade	Len (ft)	Set De...
Tubing - Production	9/10/2012	2 3/8	1.995	4.70	J-55	6,980.50	

## Tubing Components

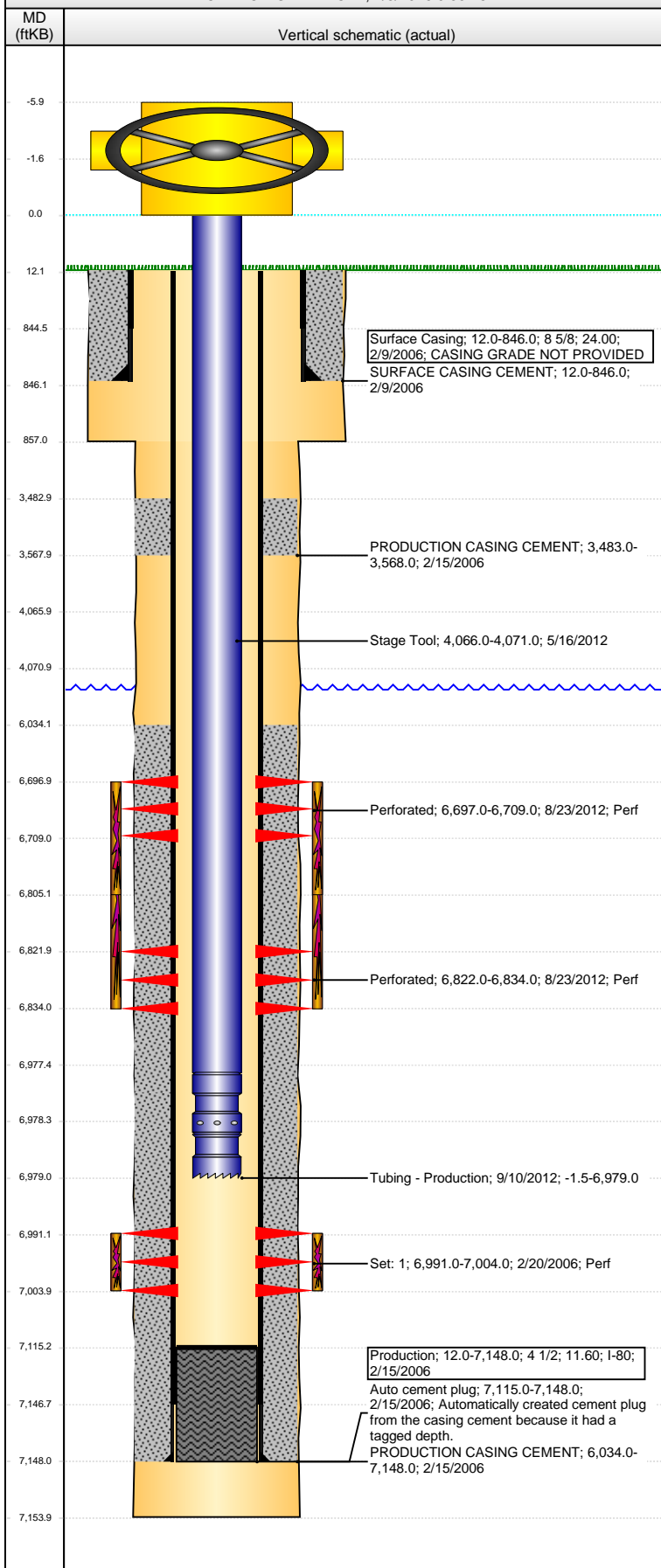
Item Des	OD (in)	Wt (lb/ft)	Grade	Jts	Len (ft)	Btm (ftKB)	Btm (TVD) (ftKB)
EUE 8rd Tubing	2 3/8	4.70	J-55	215	6,979.00	6,977.5	
Pump Seating Nipple	2 3/8	1.10	J-55	1	1.00	6,978.5	
Notched collar	2 3/8	4.70	J-55	1	0.50	6,979.0	

## Perforation Data

Zone	Bnch/St g	Entered Shot Total	Top (ftKB)	Btm (ftKB)	Date
NIOBRARA, ORIGINAL HOLE		24	6,697.00	6,709.00	8/23/2012
NIOBRARA, ORIGINAL HOLE		24	6,822.00	6,834.00	8/23/2012
CODELL, ORIGINAL HOLE		52	6,991.00	7,004.00	2/20/2006

**Well Name: KERBS 22-15**

VERTICAL - ORIGINAL HOLE, 7/5/2016 9:55:48 AM



## Stimulations & Treatments

Date	Zone	Primary Job Type
2/21/2006	CODELL, ORIGINAL HOLE	DRILLING/COMPLETION - ORIGINAL
Technical Result	Tech Result Details	Tech Result Note
Failure	Screen-out	
Comment		
SCREENED OUT WITH 95,000# PUMPED. FLOWED ONE WELLBORE OF FLUID BACK AND FINISHED FRAC.		
Date	Zone	Primary Job Type
8/23/2012	CODELL, ORIGINAL HOLE	RE-FRAC & RECOMPLETE
Technical Result	Tech Result Details	Tech Result Note
Success	According to Plan	
Comment		
Date	Zone	Primary Job Type
8/23/2012	NIOBRARA, ORIGINAL HOLE	RE-FRAC & RECOMPLETE
Technical Result	Tech Result Details	Tech Result Note
Success	According to Plan	
Comment		

## Other In Hole

Run Date	Des	OD (in)	Top (ftKB)	Btm (ftKB)
5/16/2012	Stage Tool	2	4,066.0	4,071.0

## Logs

Date	Type	Top, MD (ftKB)	Btm, MD (ftKB)
2/14/2006	COMPENSATED DENSITY	845.0	7,151.0
2/20/2006	CBL/CCL/GR	3,310.0	7,110.0
3/31/2015	GYRO	12.0	6,900.0