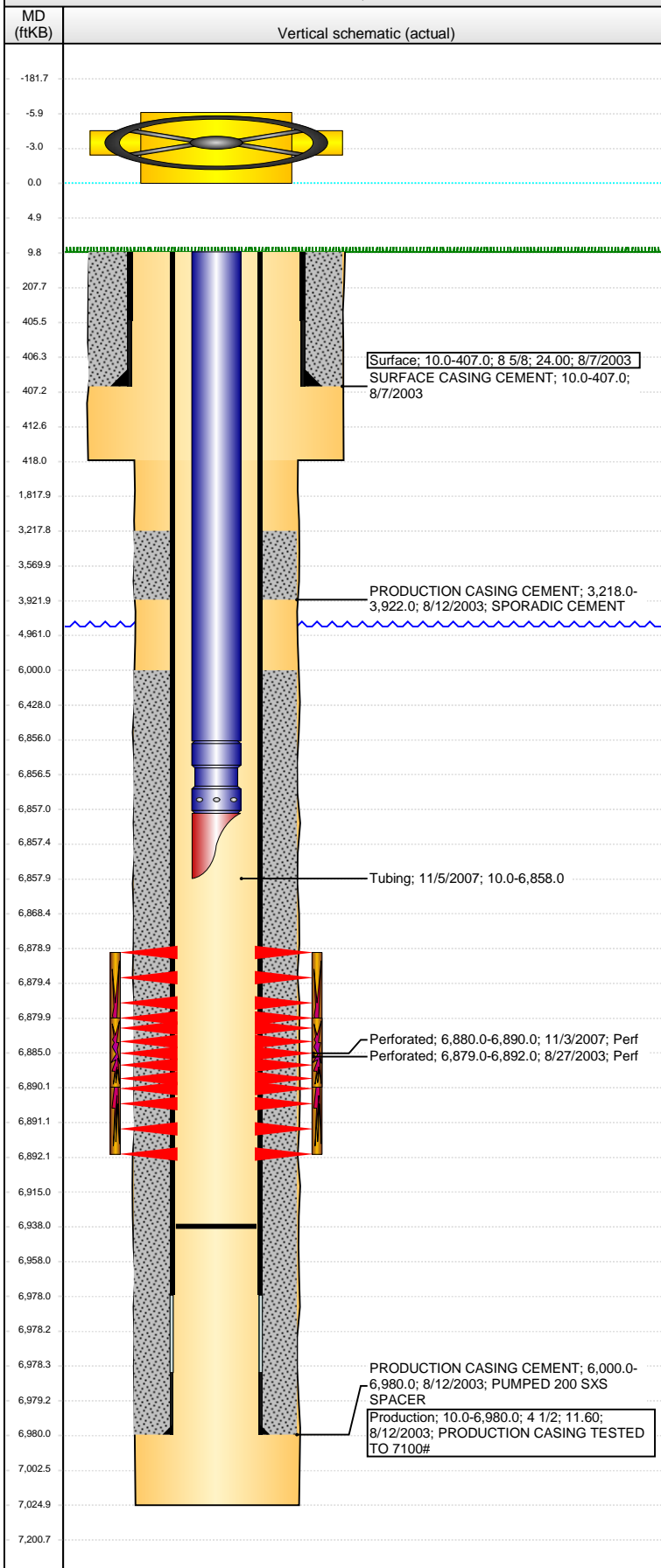


Well Name: BRUNNER 14-33

VERTICAL - ORIGINAL HOLE, 7/1/2016 12:40:17 PM



Well Header									
API 05-123-21573		Business Unit DJ BASIN		District 15		Well Config VERTICAL			
Original KB Elevation (ft) 4,721		KB - GL / MSL (ftKB) 10.00		Spud Date 8/7/2003		P & A Date			
Comment NO CSG GRADE FOUND, TESTED CASING TO 7100#									
Directions To Well									
Congressional Location									
Quarter 1	Quarter 2 SE	Quarter 3 SW	Quarter 4 SW	Section 14	Township 6 N	Twtnsh N...	Range 64	Rng E/W Dir W	
Bottom Hole Location									
North-South Distance (ft)		From N or S Line		East-West Distance (ft)			From E or W Line		
Plug Back Total Depths									
Date	Depth (ftKB)	Method			Com				
8/14/2003	6,913.0	CASED HOLE LOG			DEPTH LOGGER ON CBL				
11/5/2007	6,938.0	TAG			TAG TO LAND TUBING				
Wellbore Sections									
Section Des			Size (in)		Act Top, MD (ftKB)		Act Btm, MD (ftKB)		
SURFACE			12 1/4		10		418		
PRODUCTION			7 7/8		418		7,025		
Zone Statuses									
Zone Name	Status Date	Status	Fluid Type	Job	Prod Method				
CODELL	9/2/2003	PR		DRILLING/CO...					
CODELL	1/9/2008	PR		RE-FRAC, 10/2...					
Casing Strings									
Surface, 407.0ftKB									
Casing Description Surface		Run Date 8/7/2003	OD (in) 8 5/8	Wt/Len (l... 24.00	Grade	Top, MD (ft... 10.0	MD (ftKB) 407.0		
Production, 6,980.0ftKB									
Casing Description Production		Run Date 8/12/2003	OD (in) 4 1/2	Wt/Len (l... 11.60	Grade	Top, MD (ft... 10.0	MD (ftKB) 6,980.0		
Cement									
Description SURFACE CASING CEMENT				Top Depth (ftKB) 10.0		Bottom Depth (ftKB) 407.0			
Description PRODUCTION CASING CEMENT				Top Depth (ftKB) 3,218.0		Bottom Depth (ftKB) 3,922.0			
Description PRODUCTION CASING CEMENT				Top Depth (ftKB) 6,000.0		Bottom Depth (ftKB) 6,980.0			
Tubing Strings									
Tubing Description Tubing		Run Date 11/5/2007	String... 2 3/8	ID (in)	Wt (lb/ft)	Grade	Len (ft) 6,848.00	Set De...	
Tubing Components									
Item Des		OD (in)	Wt (lb/ft)	Grade	Jts	Len (ft)	Btm (ftKB)	Btm (TVD) (ftKB)	
Tubing		2 3/8			212	6,846.00	6,856.0		
Seat Nipple		2 3/8				1.00	6,857.0		
Mule Shoe		2 3/8				1.00	6,858.0		
Perforation Data									
Zone		Bnch/St g	Entered Shot Total	Top (ftKB)		Btm (ftKB)		Date	
CODELL, ORIGINAL HOLE			52	6,879.00		6,892.00		8/27/2003	
CODELL, ORIGINAL HOLE			40	6,880.00		6,890.00		11/3/2007	
Stimulations & Treatments									
Date 8/29/2003	Zone CODELL, ORIGINAL HOLE			Primary Job Type DRILLING/COMPLETION - ORIGINAL					
Technical Result			Tech Result Details			Tech Result Note			
Comment									
Date 11/4/2007	Zone CODELL, ORIGINAL HOLE			Primary Job Type RE-FRAC					
Technical Result			Tech Result Details			Tech Result Note			
Comment									

Well Name: BRUNNER 14-33

VERTICAL - ORIGINAL HOLE, 7/1/2016 12:40:20 PM

Other In Hole

Run Date	Des	OD (in)	Top (ftKB)	Btm (ftKB)

Logs

Date	Type	Top, MD (ftKB)	Btm, MD (ftKB)
8/12/2003	COMPENSATED DENSITY	3,500.0	6,965.0
8/12/2003	INDUCTION	406.0	6,965.0
8/14/2003	CBL/CCL/GR	3,100.0	6,911.0
8/14/2003	GYRO	10.0	6,750.0

