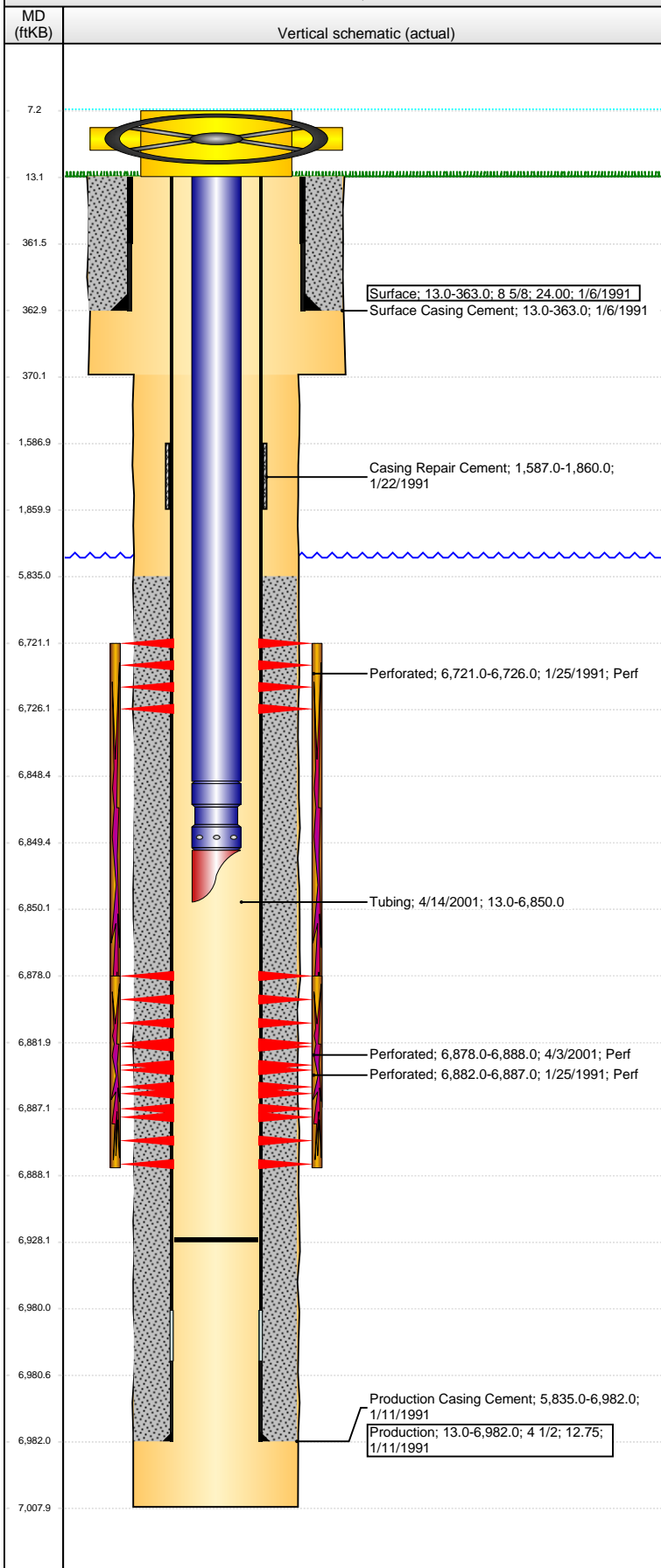


Well Name: BRUNNER 14-01

VERTICAL - ORIGINAL HOLE, 7/1/2016 12:38:40 PM



Well Header

API	Business Unit	District	Well Config
05-123-14826	DJ BASIN	15	VERTICAL
Original KB Elevation (ft)	KB - GL / MSL (ftKB)	Spud Date	P & A Date
4,729	13.00	1/5/1991	

Comment
DISCREPANCY:
TD DRL/ST RPTS 7008', LOGS 7002'. USED DRL/ST RPT.
PROD CSG 203 JTS 12.75#, 15 JTS 12.6#.

HIC @ 1860', SQUEEZED IN 1991

Directions To Well

Congressional Location

Quarter 1	Quarter 2	Quarter 3	Quarter 4	Section	Township	Twntshp N...	Range	Rng E/W Dir
		NW	SW	14	6	N	64	W

Bottom Hole Location

North-South Distance (ft)	From N or S Line	East-West Distance (ft)	From E or W Line

Plug Back Total Depths

Date	Depth (ftKB)	Method	Com
4/3/2001	6,928.0	TAG	

Wellbore Sections

Section Des	Size (in)	Act Top, MD (ftKB)	Act Btm, MD (ftKB)
SURFACE	12 1/4	13	370
PRODUCTION	7 7/8	370	7,008

Zone Statuses

Zone Name	Status Date	Status	Fluid Type	Job	Prod Method
CODELL	2/25/1991	PR		DRILLING/CO...	
CODELL	4/16/2001	PR		RE-FRAC, 3/31...	
NIOBRARA	2/25/1991	PR		DRILLING/CO...	

Casing Strings

Surface, 363.0ftKB

Casing Description	Run Date	OD (in)	Wt/Len (l...	Grade	Top, MD (ft...	MD (ftKB)
Surface	1/6/1991	8 5/8	24.00		13.0	363.0

Production, 6,982.0ftKB

Casing Description	Run Date	OD (in)	Wt/Len (l...	Grade	Top, MD (ft...	MD (ftKB)
Production	1/11/1991	4 1/2	12.75		13.0	6,982.0

Cement

Description	Top Depth (ftKB)	Bottom Depth (ftKB)
Surface Casing Cement	13.0	363.0
Production Casing Cement	5,835.0	6,982.0
Casing Repair Cement	1,587.0	1,860.0

Tubing Strings

Tubing Description	Run Date	String...	ID (in)	Wt (lb/ft)	Grade	Len (ft)	Set De...
Tubing	4/14/2001	2 3/8				6,837.00	

Tubing Components

Item Des	OD (in)	Wt (lb/ft)	Grade	Jts	Len (ft)	Btm (ftKB)	Btm (TVD) (ftKB)
Tubing	2 3/8			220	6,835.50	6,848.5	
Seating Nipple	2 3/8			1	1.00	6,849.5	
Mule Shoe	2 3/8			1	0.50	6,850.0	

Perforation Data

Zone	Bnch/St g	Entered Shot Total	Top (ftKB)	Btm (ftKB)	Date
NIOBRARA, ORIGINAL HOLE	B	6	6,721.00	6,726.00	1/25/1991
CODELL, ORIGINAL HOLE		40	6,878.00	6,888.00	4/3/2001
CODELL, ORIGINAL HOLE		6	6,882.00	6,887.00	1/25/1991

Stimulations & Treatments

Date	Zone	Primary Job Type
2/1/1991	NIOBRARA-CODELL, ORIGINAL HOLE	DRILLING/COMPLETION - ORIGINAL
Technical Result	Tech Result Details	Tech Result Note

Comment
LIMITED ENTRY

Well Name: BRUNNER 14-01

VERTICAL - ORIGINAL HOLE, 7/1/2016 12:38:43 PM

Stimulations & Treatments

Date 4/10/2001	Zone CODELL, ORIGINAL HOLE	Primary Job Type RE-FRAC
Technical Result	Tech Result Details	Tech Result Note
Comment		

Other In Hole

Run Date	Des	OD (in)	Top (ftKB)	Btm (ftKB)

Logs

Date	Type	Top, MD (ftKB)	Btm, MD (ftKB)
1/10/1991	COMPENSATED DENSITY	3,450.0	7,001.0
1/10/1991	INDUCTION	300.0	7,001.0
1/21/1991	CEMENT BOND	5,800.0	6,932.0
5/29/2015	GYRO	13.0	6,800.0

