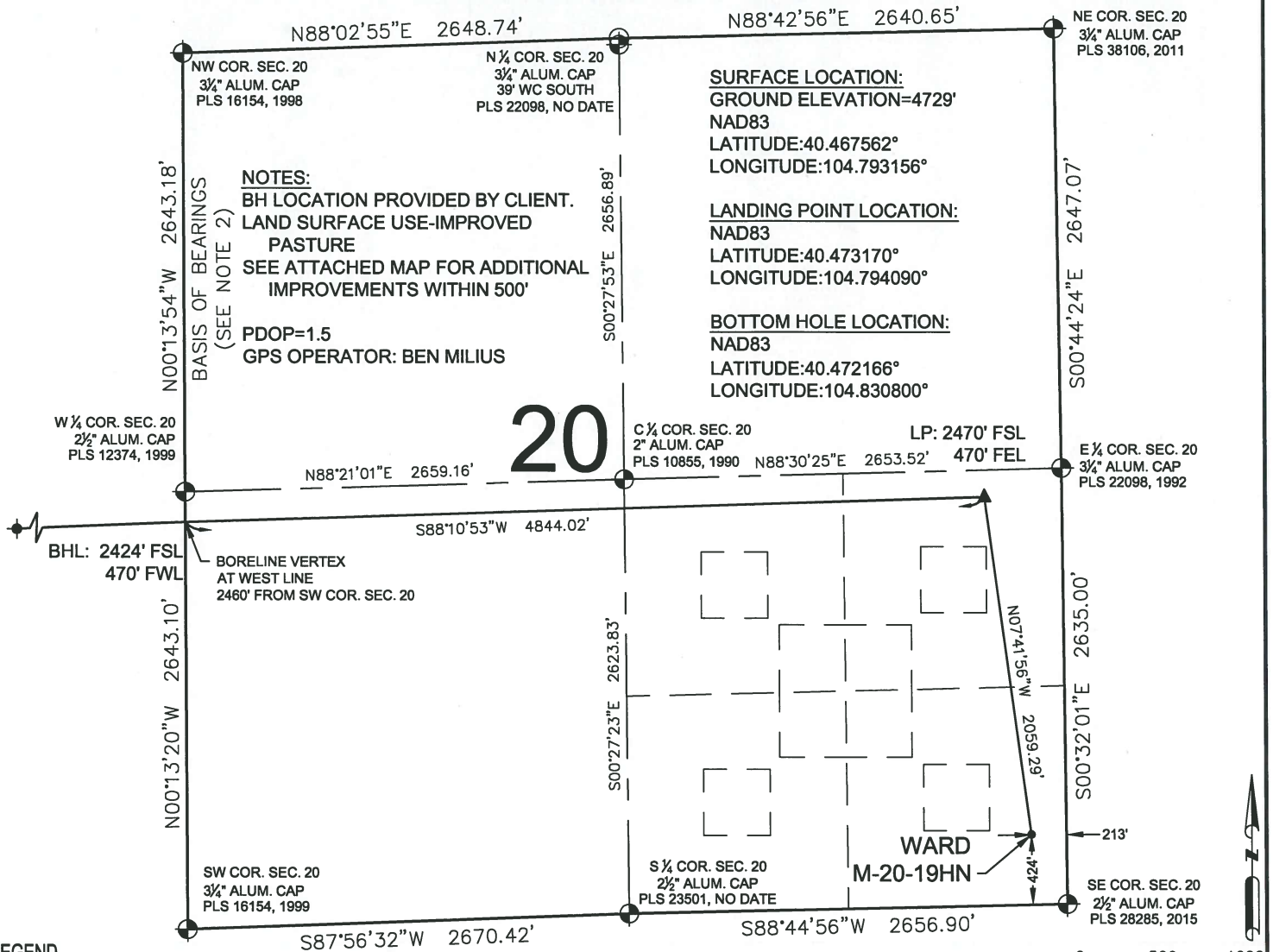


WARD M-20-19HN WELL LOCATION CERTIFICATE



LEGEND

- ⊕ = EXISTING MONUMENT
- = CALCULATED POSITION
- = PROPOSED WELL
- ◆ = EXISTING WELL
- ⬮ = BOTTOM HOLE
- ▲ = LANDING POINT
- LP = LANDING POINT
- BHL = BOTTOM HOLE

WELL WARD M-20-19HN TO BE LOCATED 424' FSL & 213' FEL

NOTES:

- THIS FIELD SURVEY CONFORMS TO THE MINIMUM STANDARDS SET BY THE C.O.G.C.C., RULE NO. 215
- BEARINGS ARE BASED ON THE ASSUMPTION THAT THE WEST LINE OF THE NORTHWEST QUARTER OF SECTION 20, BEARS N00°13'54"W BETWEEN THE MONUMENTS SHOWN HEREON.
- GRID DISTANCES ARE SHOWN, AS GPS MEASURED IN THE FIELD, WITH TIES TO WELLS MEASURED PERPENDICULAR TO SECTION LINES. TO GET GROUND DISTANCES MULTIPLY THE SHOWN DISTANCE BY 1.000257471.
- ELEVATIONS SHOWN ARE NAVD 88, AS DERIVED BY GPS OBSERVATIONS.
- SECTION MONUMENTS RECOVERED ON 8/19/14, 6/9/15, AND 7/8/15. WELLS STAKED ON 7/8/15. REVISED WELL LOCATION STAKED ON 10/19/15.

I, JACOB S. FRISCH, A LICENSED PROFESSIONAL LAND SURVEYOR IN THE STATE OF COLORADO DO HEREBY CERTIFY TO **BAYSWATER EXPLORATION & PRODUCTION, LLC**, THAT THE SURVEY AND WELL LOCATION CERTIFICATE SHOWN HEREON WERE DONE BY ME OR UNDER MY DIRECT SUPERVISION AND THAT THE DRAWING SHOWN HEREON ACCURATELY DEPICTS THE PROPOSED LOCATION OF THE WELL. THIS CERTIFICATE DOES NOT REPRESENT A LAND SURVEY PLAT OR IMPROVEMENT SURVEY PLAT AS DEFINED BY C.R.S. 38-51-102 AND CANNOT BE RELIED UPON TO DETERMINE OWNERSHIP.

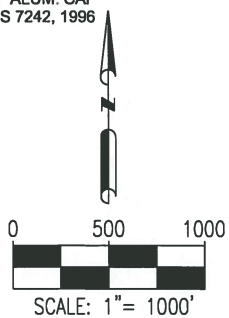
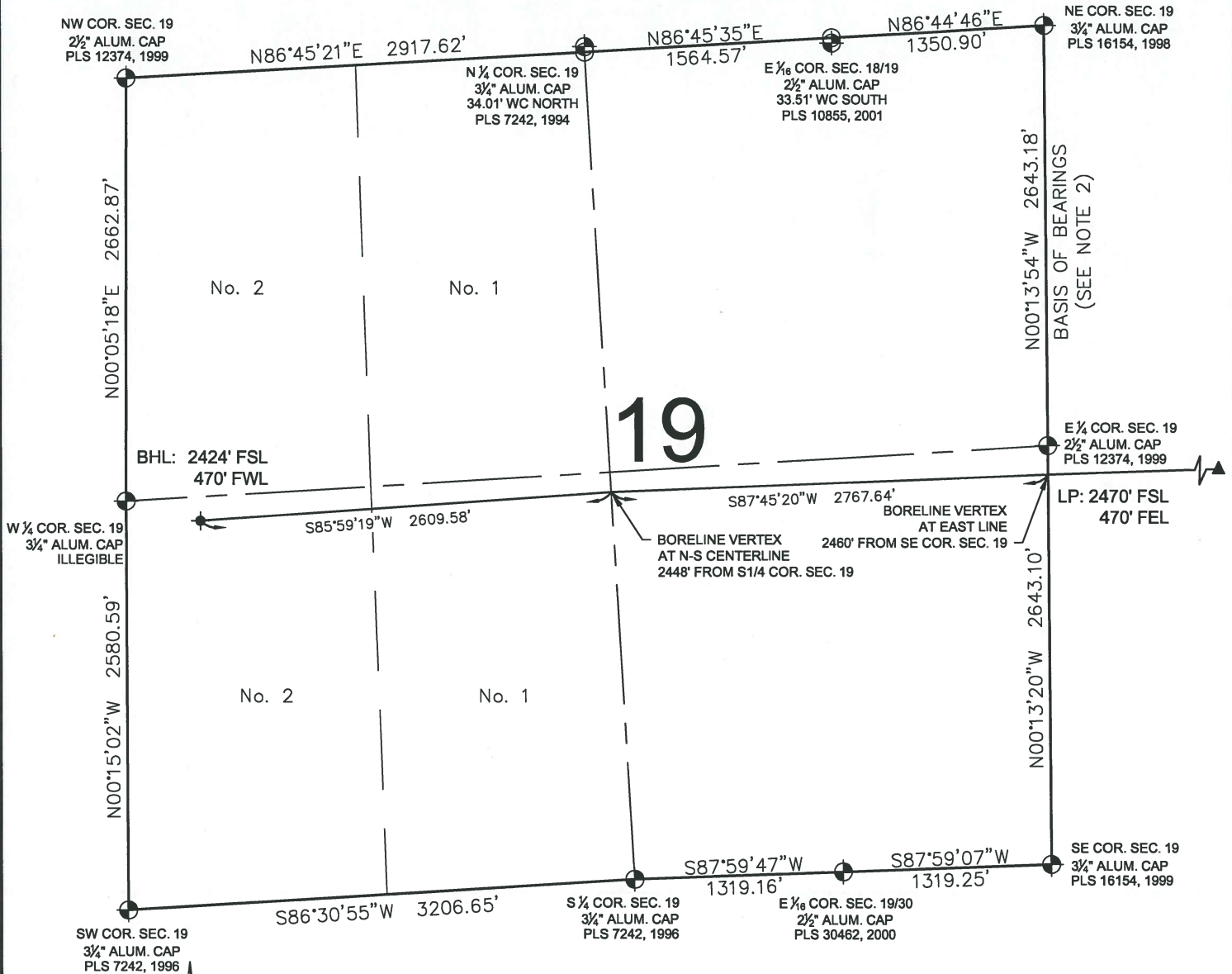
JACOB S. FRISCH PLS 38149
DATE: 02-16-16
JOB NO: B14.BEP.0105
FOR AND ON BEHALF OF P.F.S., LLC



SHEET 1 OF 2

PREPARED BY: PFS Petroleum Field Services, LLC 7535 Hilltop Circle Denver, CO 80221	FIELD DATE: 10-19-15 DRAWING DATE: 02-15-16 BY: KAD CHECKED BY: JLW	WELL NAME: WARD M-20-19HN SURFACE LOCATION: SE1/4 SE1/4 SEC. 20, T6N, R66W, 6TH P.M. WELD COUNTY, COLORADO	PREPARED FOR: BAYSWATER EXPLORATION AND PRODUCTION, LLC
--	--	---	--

WARD M-20-19HN WELL LOCATION CERTIFICATE



- LEGEND**
- ⊕ = EXISTING MONUMENT
 - = CALCULATED POSITION
 - = PROPOSED WELL
 - ◆ = EXISTING WELL
 - ⬮ = BOTTOM HOLE
 - ▲ = LANDING POINT
 - LP = LANDING POINT
 - BHL = BOTTOM HOLE

JACOB S. FRISCH, PLS 38149
 DATE: 02-16-16
 JOB NO: B14.BEP.0102
 FOR AND ON BEHALF OF P.F.S., LLC

SHEET 2 OF 2

PREPARED BY: Petroleum Field Services, LLC 7535 Hilltop Circle Denver, CO 80221	FIELD DATE: 10-19-15	WELL NAME: WARD M-20-19HN	PREPARED FOR: BAYSWATER EXPLORATION AND PRODUCTION, LLC
	DRAWING DATE: 02-15-16	SURFACE LOCATION: SE1/4 SE1/4 SEC. 20, T6N, R66W, 6TH P.M.	
	BY: KAD	CHECKED BY: JLW	
		WELD COUNTY, COLORADO	