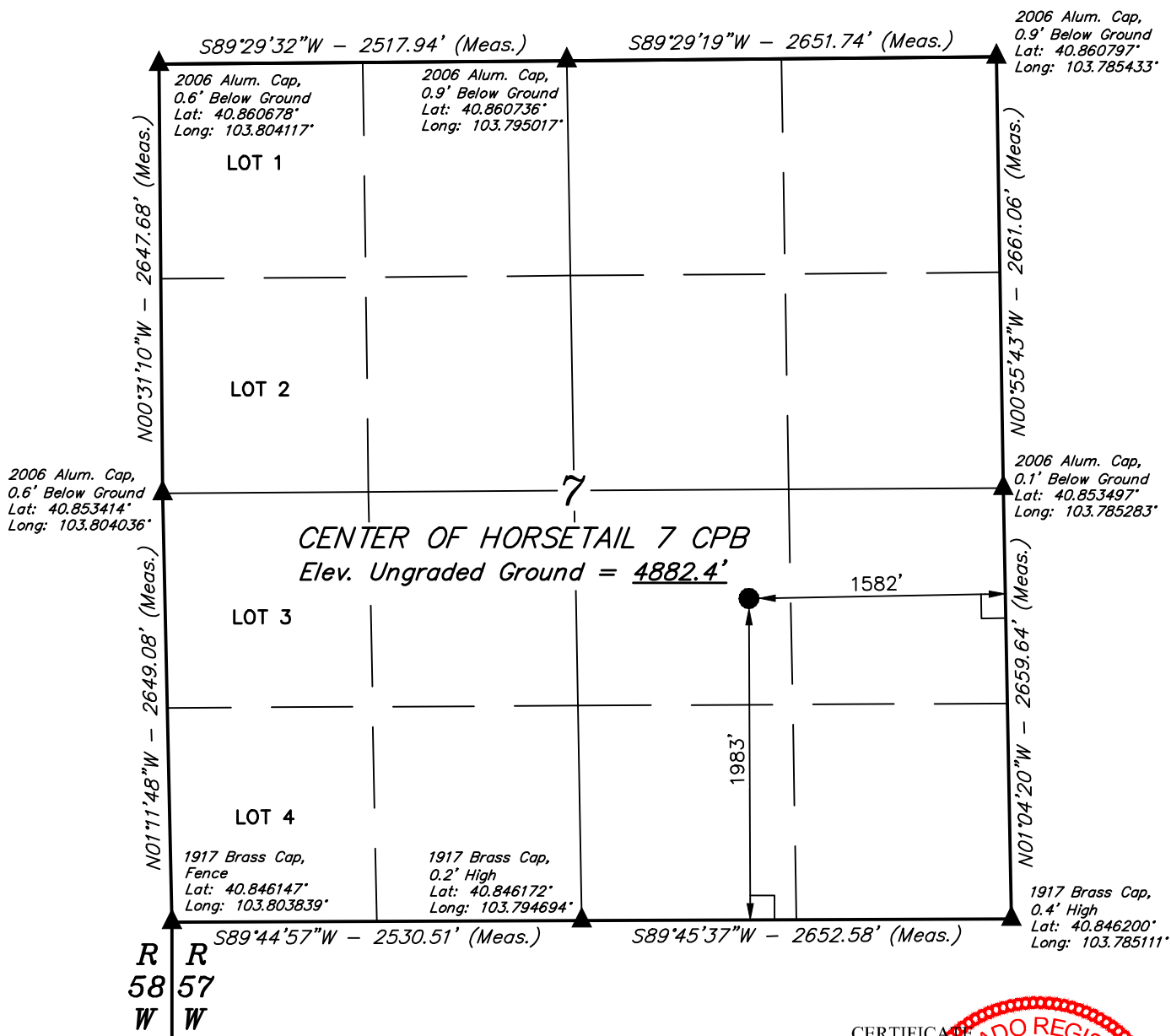


**LEGEND:**

- └─ = 90° SYMBOL  
 ● = CENTER OF PAD.  
 ▲ = SECTION CORNERS LOCATED.

*T10N, R57W, 6th P.M.*



PDOP = 1.4

**NAD 83 (CENTER OF HORSETAIL 7 CPB)**

LATITUDE = 40°51'05.85" (40.851625)  
 LONGITUDE = 103°47'27.45" (103.790958)

**NAD 27 (CENTER OF HORSETAIL 7 CPB)**

LATITUDE = 40°51'05.90" (40.851639)  
 LONGITUDE = 103°47'25.64" (103.790456)



**CERTIFICATE**  
 THIS IS TO CERTIFY THAT THE ABOVE PLAT WAS PREPARED FROM FIELD NOTES OF ACTUAL SURVEYS MADE BY ME OR UNDER MY SUPERVISION AND THAT THE SAME ARE TRUE AND CORRECT TO THE BEST OF MY KNOWLEDGE AND BELIEF.

REGISTERED LAND SURVEYOR  
 REGISTRATION NO. 28285  
 STATE OF COLORADO

**BASIS OF BEARINGS**  
 BASIS OF BEARINGS IS A G.P.S. OBSERVATION  
**BASIS OF ELEVATION**

SPOT ELEVATION LOCATED AT THE NORTHEAST CORNER OF SECTION 15, T9N, R58W, 6th P.M. TAKEN FROM THE GATEHOOK SPRING, QUADRANGLE, COLORADO, WELD COUNTY, 7.5 MINUTE QUAD (TOPOGRAPHIC MAP) PUBLISHED BY THE UNITED STATES DEPARTMENT OF THE INTERIOR, GEOLOGICAL SURVEY. SAID ELEVATION IS MARKED AS BEING 4679 FEET.

**WHITING OIL & GAS CORP.**

**CENTER OF HORSETAIL 7 CPB  
 NW 1/4 SE 1/4, SECTION 7, T10N, R57W, 6th P.M.  
 WELD COUNTY, COLORADO**

SURVEYED BY: DARREN SHANKS, D.N. DATE: 03-15-16  
 DRAWN BY: M.D. DATE DRAWN: 03-16-16  
 SCALE: 1" = 1000' REVISED: 00-00-00

**LOCATION PLAT**



**UELS, LLC**  
 Corporate Office \* 85 South 200 East  
 Vernal, UT 84078 \* (435) 789-1017

