

T7S, R97W, 6th P.M.

1920 Brass Cap,
1.5' High
Lat: 39.481792°
Long: 108.196089°

1920 Brass Cap,
0.6' High, Steel
Post
Lat: 39.481786°
Long: 108.178033°

Caerus Oil & Gas LLC

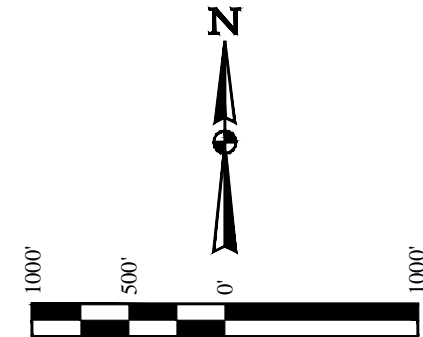
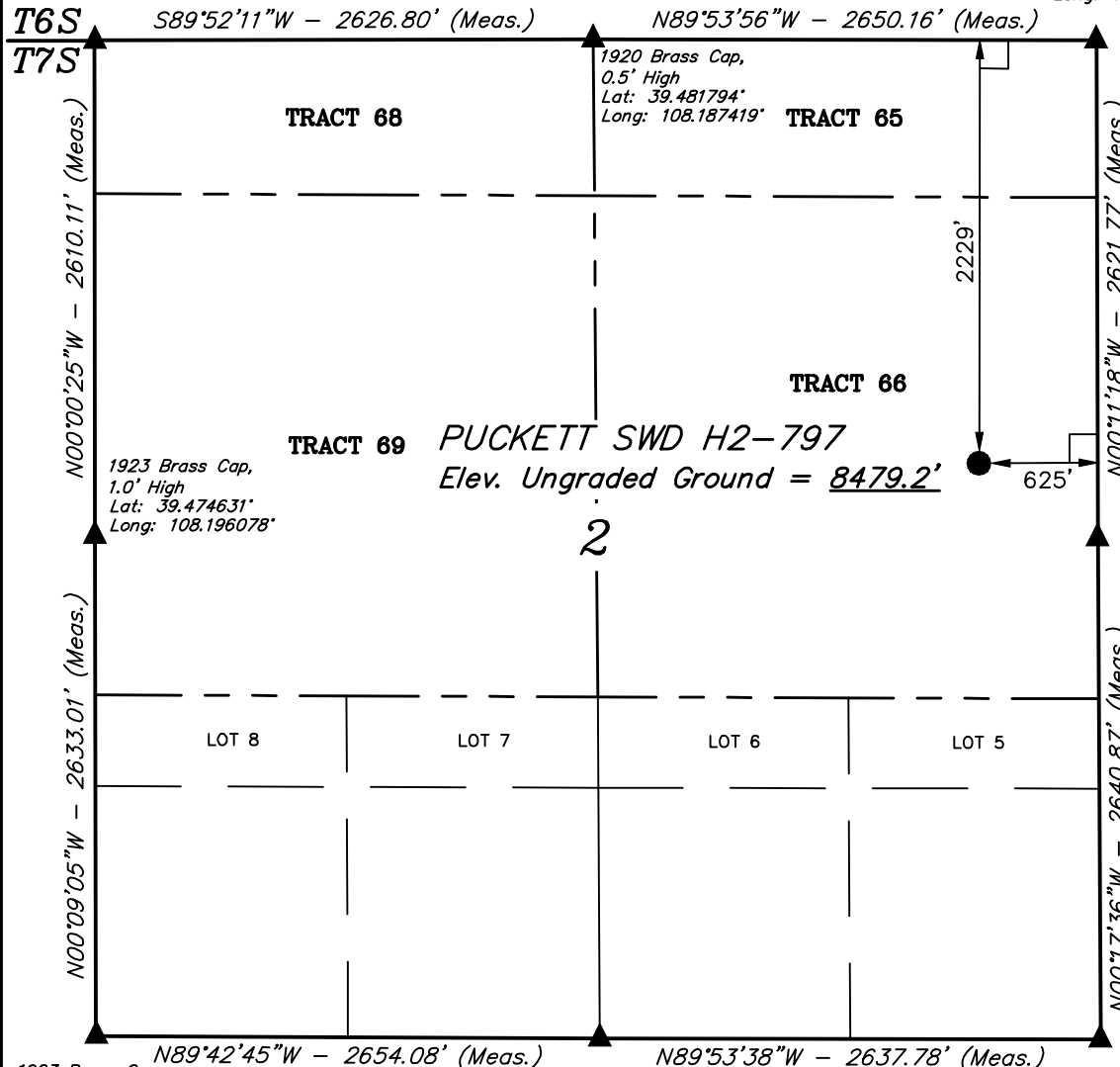
PUCKETT SWD H2-797
TRACT 66, SECTION 2, T7S, R97W, 6th P.M.
GARFIELD COUNTY, COLORADO

BASIS OF BEARINGS

BASIS OF BEARINGS IS A G.P.S. OBSERVATION

BASIS OF ELEVATION

SPOT ELEVATION AT THE NORTHWEST CORNER OF SECTION 30,
T5S, R95W, 6th P.M. TAKEN FROM THE FORKED GULCH
QUADRANGLE, COLORADO, GARFIELD COUNTY, 7.5 MINUTE SERIES
(TOPOGRAPHICAL MAP) PUBLISHED BY THE UNITED STATES
DEPARTMENT OF THE INTERIOR, GEOLOGICAL SURVEY. SAID
ELEVATION IS MARKED AS BEING 5966 FEET.



CERTIFICATE

THIS IS TO CERTIFY THAT THE ABOVE PLAT WAS PREPARED FROM FIELD
NOTES OF ACTUAL SURVEYS MADE BY ME OR UNDER MY SUPERVISION
AND THAT THE SAME ARE TRUE AND CORRECT TO THE BEST OF MY
KNOWLEDGE AND BELIEF.

Handwritten signature: Harold Marshall
REGISTERED LAND SURVEYOR
REGISTRATION NO. 12810
STATE OF COLORADO 12-02-14

LEGEND:

- = 90° SYMBOL
- = PROPOSED WELLHEAD.
- = TARGET BOTTOM HOLE.
- ▲ = SECTION CORNERS LOCATED.

PDOP = 1.3

NAD 83 (SURFACE LOCATION)	
LATITUDE = 39°28'32.41" (39.475669)	
LONGITUDE = 108°10'48.78" (108.180217)	
NAD 27 (SURFACE LOCATION)	
LATITUDE = 39°28'32.49" (39.475692)	
LONGITUDE = 108°10'46.49" (108.179581)	



UELS, LLC
Corporate Office * 85 South 200 East
Vernal, UT 84078 * (435) 789-1017

SURVEYED BY: JARED CHRISTOPHER, B.B.	DATE: 08-19-14
DRAWN BY: M.D.	DATE DRAWN: 09-12-14
SCALE: 1" = 1000'	REVISED: 12-02-14 M.D.

WELL LOCATION PLAT