

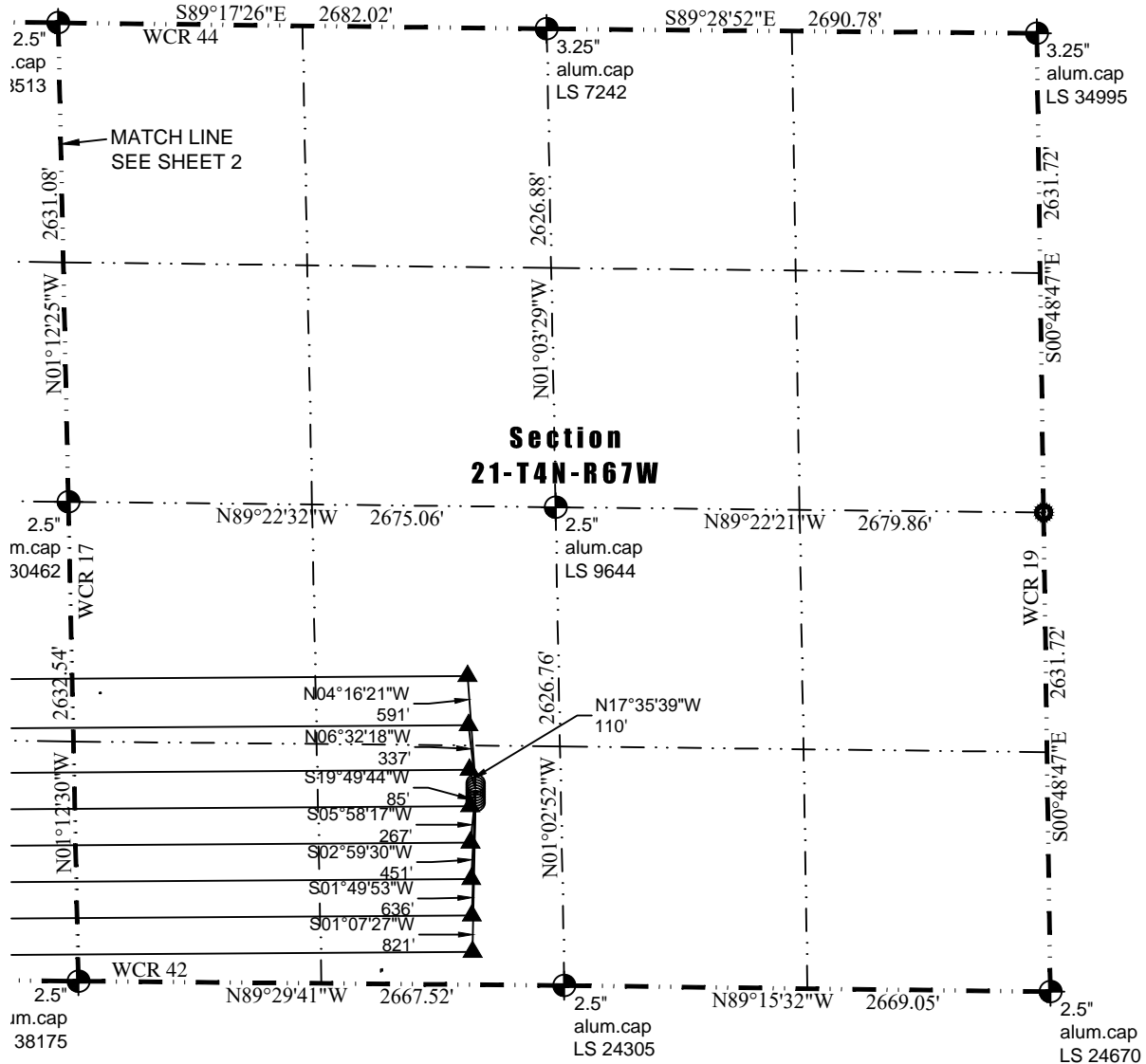


Washburn Land Surveying  
www.WashburnSurveying.com  
970-232-9645

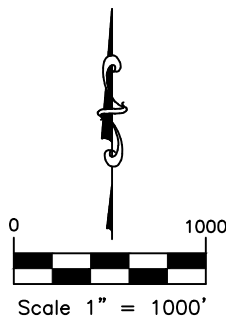
# MULI-WELL PLAN

## WALTERS 4N67W21P PAD

SECTION: 21  
TOWNSHIP: 4N  
RANGE: 67W  
6TH P.M.  
WELD COUNTY, CO



- LEGEND:**
- ALIQUOT CORNER AS DESCRIBED
  - SURFACE HOLE LOCATION (SHL)
  - ▲ ENTRY POINT (EP)
  - BOTTOM HOLE LOCATION (BHL)



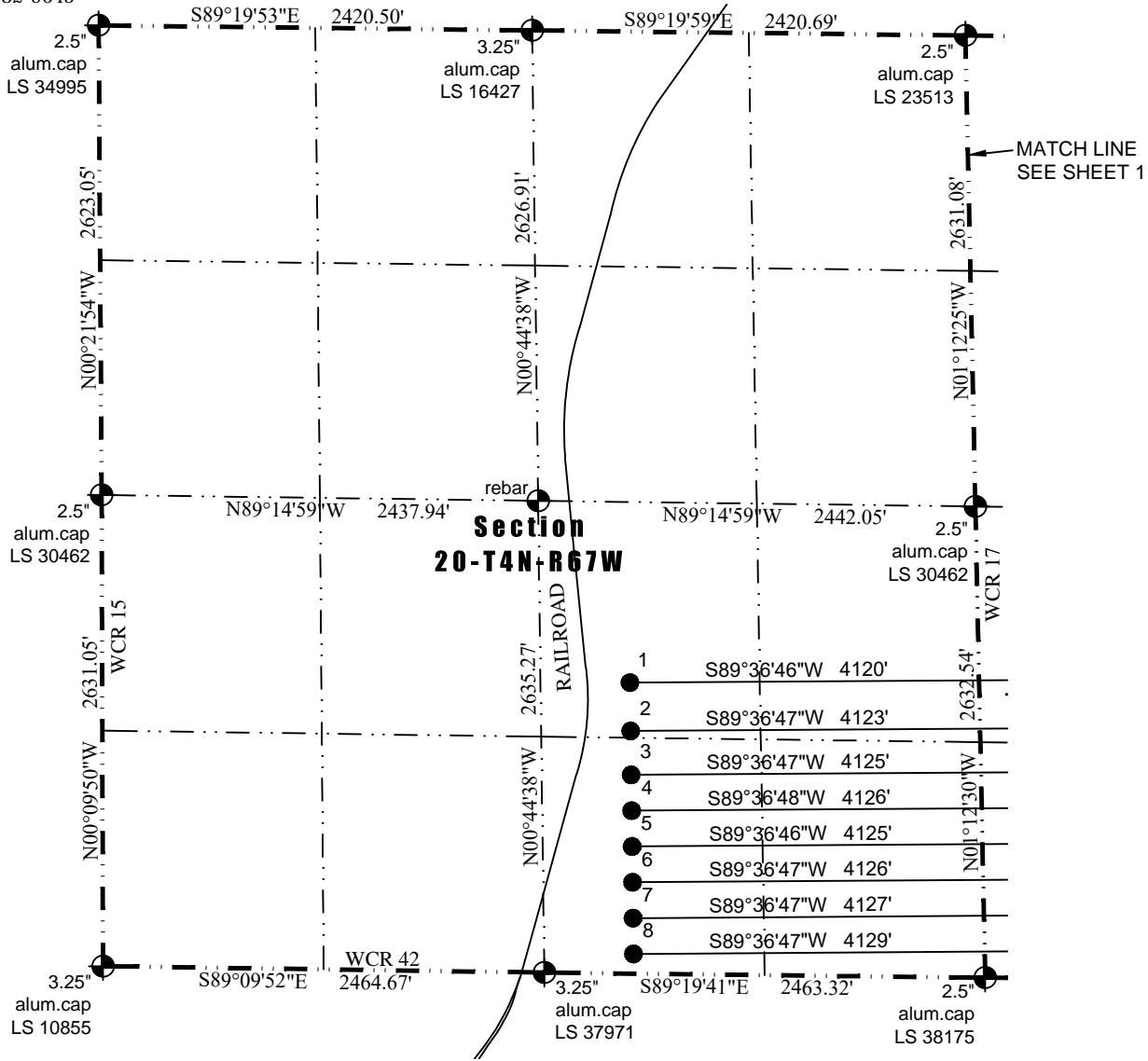


Washburn Land Surveying  
www.WashburnSurveying.com  
970-232-9645

# MULI-WELL PLAN

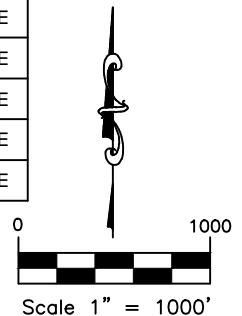
## WALTERS 4N67W21P PAD

SECTION: 21  
TOWNSHIP: 4N  
RANGE: 67W  
6TH P.M.  
WELD COUNTY, CO



#	WELL NAME	BHL FOOTAGES				BHL LAT	BHL LONG	BHL S-T-R	BHL ¼ ¼
		1625	FSL	1949	FEL				
1	WALTERS 21P-314	1625	FSL	1949	FEL	N40.295763°	W104.912466°	20-4-67	NWSE
2	WALTERS 21P-204	1355	FSL	1951	FEL	N40.295021°	W104.912459°	20-4-67	NWSE
3	WALTERS 21P-304	1110	FSL	1953	FEL	N40.294349°	W104.912454°	20-4-67	SWSE
4	WALTERS 21P-434	910	FSL	1955	FEL	N40.293799°	W104.912449°	20-4-67	SWSE
5	WALTERS 21P-234	710	FSL	1956	FEL	N40.293250°	W104.912445°	20-4-67	SWSE
6	WALTERS 21Q-314	510	FSL	1958	FEL	N40.292701°	W104.912440°	20-4-67	SWSE
7	WALTERS 21Q-214	310	FSL	1960	FEL	N40.292152°	W104.912436°	20-4-67	SWSE
8	WALTERS 21Q-304	110	FSL	1961	FEL	N40.291603°	W104.912431°	20-4-67	SWSE

- LEGEND:**
- ALIQUOT CORNER AS DESCRIBED
  - SURFACE HOLE LOCATION (SHL)
  - ▲ ENTRY POINT (EP)
  - BOTTOM HOLE LOCATION (BHL)





Washburn Land Surveying  
www.WashburnSurveying.com  
970-232-9645

# MULI-WELL PLAN WALTERS 4N67W21P PAD

SECTION: 21  
TOWNSHIP: 4N  
RANGE: 67W  
6TH P.M.  
WELD COUNTY, CO



SURFACE HOLE  
LOCATIONS  
(N TO S)  
WALTERS 21P-314, WALTERS 21P-204,  
WALTERS 21P-304, WALTERS 21P-434,  
WALTERS 21P-234, WALTERS 21Q-314,  
WALTERS 21Q-214, WALTERS 21Q-304

