

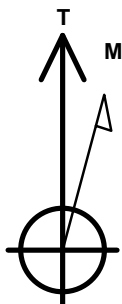
# Bayswater Exploration & Production, LLC

Well Name: **Ward W-20-19HC**

Surface Location: Ward 20-M Pad Sec. 20-T6N-R66W  
 North American Datum 1983 , US State Plane 1983, Colorado Northern Zone  
 Ground Elevation: 4727.0  
 +N/-S +E/-W Northing Easting Latitude Longitude Slot  
 0.0 0.0 1413806.94 3196666.29 40.467150 -104.793156  
 RKB - 23' WELL @ 4750.0ft (RKB - 23')

## DESIGN TARGET DETAILS

Name	TVD	+N/-S	+E/-W	Shape
SHL 274'FSL, 213'FEL, SEC.20	1.0	0.0	0.0	Point
BHL 319'FSL, 470'FWL, SEC.19	7080.0	-278.7	-10481.3	Point
Boreline Vertex 322'FSL	7100.0	-132.1	-7765.9	Point
Boreline Vertex 324'FSL	7110.0	-58.1	-5111.4	Point
LPL 325'FSL, 470'FEL, SEC.20	7125.0	47.7	-256.8	Point



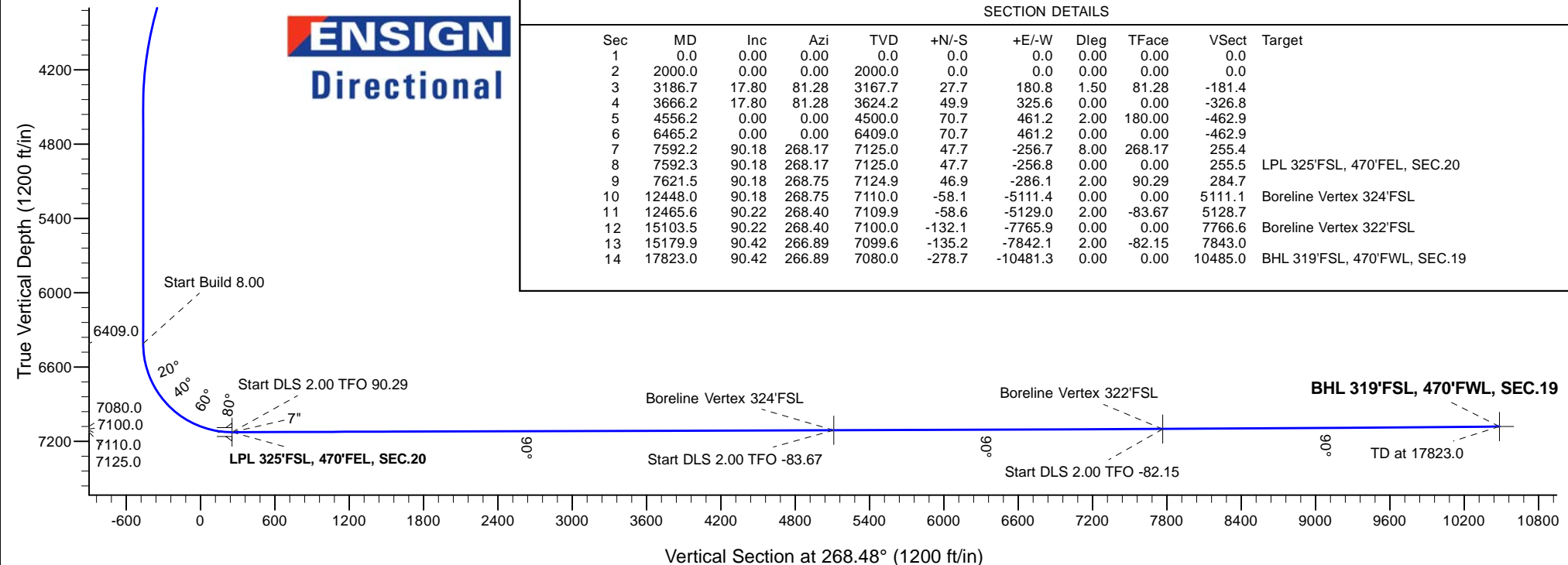
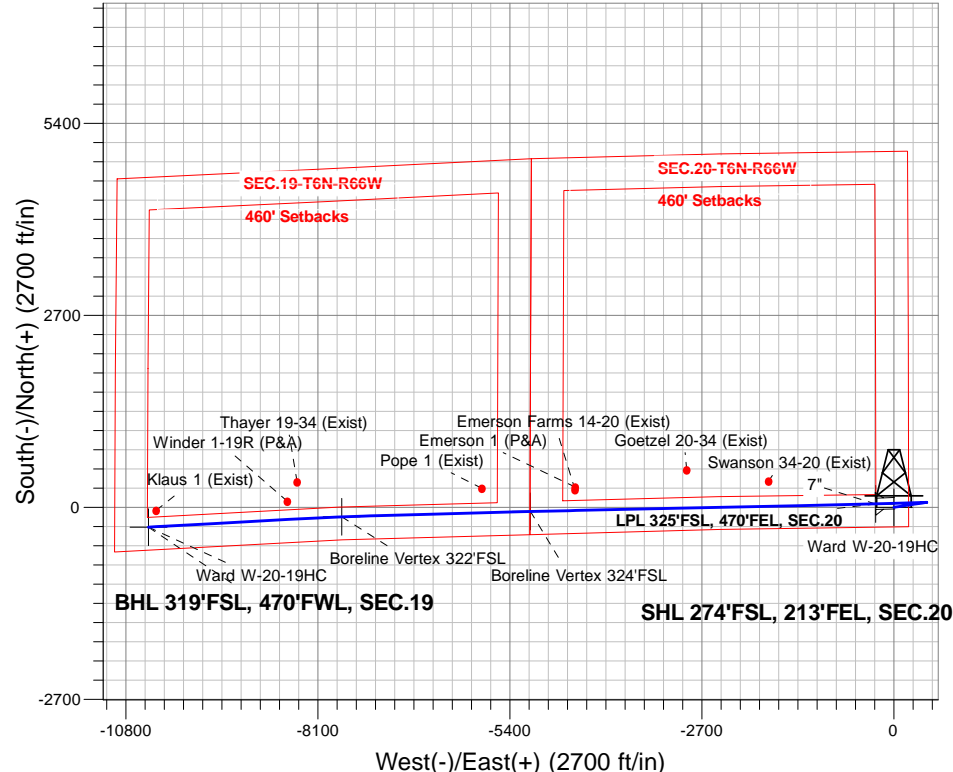
Azimuths to True North  
 Magnetic North: 8.21°

Magnetic Field  
 Strength: 52636.8snT  
 Dip Angle: 66.93°  
 Date: 6/17/2016  
 Model: IGRF2010

Ward 20-M Pad Sec. 20-T6N-R66W  
 Ward W-20-19HC  
 Plan #2 (6-14-16)  
 8:33, June 17 2016

## ANNOTATIONS

TVD	MD	Annotation
2000.0	2000.0	KOP - Start Build 1.50
6409.0	6465.2	Start Build 8.00
7125.0	7592.3	Start DLS 2.00 TFO 90.29
7110.0	12448.0	Start DLS 2.00 TFO -83.67
7100.0	15103.5	Start DLS 2.00 TFO -82.15
7080.0	17823.0	TD at 17823.0





# **Bayswater Exploration & Production, LLC**

**SEC.20-T6N-R66W**

**Ward 20-M Pad Sec. 20-T6N-R66W**

**Ward W-20-19HC**

**Wellbore #1**

**Plan: Plan #2 (6-14-16)**

## **Standard Planning Report**

**17 June, 2016**



**BAYSWATER**  
**EXPLORATION & PRODUCTION, LLC**

<b>Database:</b>	US_EDM	<b>Local Co-ordinate Reference:</b>	Well Ward W-20-19HC
<b>Company:</b>	Bayswater Exploration & Production, LLC	<b>TVD Reference:</b>	WELL @ 4750.0ft (RKB - 23')
<b>Project:</b>	SEC.20-T6N-R66W	<b>MD Reference:</b>	WELL @ 4750.0ft (RKB - 23')
<b>Site:</b>	Ward 20-M Pad Sec. 20-T6N-R66W	<b>North Reference:</b>	True
<b>Well:</b>	Ward W-20-19HC	<b>Survey Calculation Method:</b>	Minimum Curvature
<b>Wellbore:</b>	Wellbore #1		
<b>Design:</b>	Plan #2 (6-14-16)		

<b>Project</b>	SEC.20-T6N-R66W, Weld County, Colorado		
<b>Map System:</b>	US State Plane 1983	<b>System Datum:</b>	Mean Sea Level
<b>Geo Datum:</b>	North American Datum 1983		Using Well Reference Point
<b>Map Zone:</b>	Colorado Northern Zone		Using geodetic scale factor

<b>Site</b>	Ward 20-M Pad Sec. 20-T6N-R66W			
<b>Site Position:</b>		<b>Northing:</b>	1,413,957.04 usft	<b>Latitude:</b> 40.467562
<b>From:</b>	Lat/Long	<b>Easting:</b>	3,196,665.10 usft	<b>Longitude:</b> -104.793156
<b>Position Uncertainty:</b>	0.0 ft	<b>Slot Radius:</b>	13-3/16 "	<b>Grid Convergence:</b> 0.46 °

<b>Well</b>	Ward W-20-19HC			
<b>Well Position</b>	<b>+N/-S</b>	-150.1 ft	<b>Northing:</b>	1,413,806.94 usft
	<b>+E/-W</b>	0.0 ft	<b>Easting:</b>	3,196,666.30 usft
<b>Position Uncertainty</b>		0.0 ft	<b>Wellhead Elevation:</b>	0.0 ft
			<b>Ground Level:</b>	4,727.0 ft

<b>Wellbore</b>	Wellbore #1				
<b>Magnetics</b>	<b>Model Name</b>	<b>Sample Date</b>	<b>Declination (°)</b>	<b>Dip Angle (°)</b>	<b>Field Strength (nT)</b>
	IGRF2010	6/17/2016	8.21	66.93	52,637

<b>Design</b>	Plan #2 (6-14-16)			
<b>Audit Notes:</b>				
<b>Version:</b>	<b>Phase:</b>	PROTOTYPE	<b>Tie On Depth:</b>	0.0
<b>Vertical Section:</b>	<b>Depth From (TVD) (ft)</b>	<b>+N/-S (ft)</b>	<b>+E/-W (ft)</b>	<b>Direction (°)</b>
	0.0	0.0	0.0	268.48

<b>Plan Sections</b>										
Measured Depth (ft)	Inclination (°)	Azimuth (°)	Vertical Depth (ft)	+N/-S (ft)	+E/-W (ft)	Dogleg Rate (°/100usft)	Build Rate (°/100usft)	Turn Rate (°/100usft)	TFO (°)	Target
0.0	0.00	0.00	0.0	0.0	0.0	0.00	0.00	0.00	0.00	
2,000.0	0.00	0.00	2,000.0	0.0	0.0	0.00	0.00	0.00	0.00	
3,186.7	17.80	81.28	3,167.7	27.7	180.8	1.50	1.50	0.00	81.28	
3,666.2	17.80	81.28	3,624.2	49.9	325.6	0.00	0.00	0.00	0.00	
4,556.2	0.00	0.00	4,500.0	70.7	461.2	2.00	-2.00	0.00	180.00	
6,465.2	0.00	0.00	6,409.0	70.7	461.2	0.00	0.00	0.00	0.00	
7,592.2	90.18	268.17	7,125.0	47.7	-256.7	8.00	8.00	0.00	268.17	
7,592.3	90.18	268.17	7,125.0	47.7	-256.8	0.00	0.00	0.00	0.00	LPL 325'FSL, 470'FEI
7,621.5	90.18	268.75	7,124.9	46.9	-286.1	2.00	-0.01	2.00	90.29	
12,448.0	90.18	268.75	7,110.0	-58.1	-5,111.4	0.00	0.00	0.00	0.00	Boreline Vertex 324'F
12,465.6	90.22	268.40	7,109.9	-58.6	-5,129.0	2.00	0.22	-1.99	-83.67	
15,103.5	90.22	268.40	7,100.0	-132.1	-7,765.9	0.00	0.00	0.00	0.00	Boreline Vertex 322'F
15,179.9	90.42	266.89	7,099.6	-135.2	-7,842.1	2.00	0.27	-1.98	-82.15	
17,823.0	90.42	266.89	7,080.0	-278.7	-10,481.3	0.00	0.00	0.00	0.00	BHL 319'FSL, 470'FW

Database:	US_EDM	Local Co-ordinate Reference:	Well Ward W-20-19HC
Company:	Bayswater Exploration & Production, LLC	TVD Reference:	WELL @ 4750.0ft (RKB - 23')
Project:	SEC.20-T6N-R66W	MD Reference:	WELL @ 4750.0ft (RKB - 23')
Site:	Ward 20-M Pad Sec. 20-T6N-R66W	North Reference:	True
Well:	Ward W-20-19HC	Survey Calculation Method:	Minimum Curvature
Wellbore:	Wellbore #1		
Design:	Plan #2 (6-14-16)		

Planned Survey									
Measured Depth (ft)	Inclination (°)	Azimuth (°)	Vertical Depth (ft)	+N/-S (ft)	+E/-W (ft)	Vertical Section (ft)	Dogleg Rate (°/100usft)	Build Rate (°/100usft)	Turn Rate (°/100usft)
0.0	0.00	0.00	0.0	0.0	0.0	0.0	0.00	0.00	0.00
100.0	0.00	0.00	100.0	0.0	0.0	0.0	0.00	0.00	0.00
200.0	0.00	0.00	200.0	0.0	0.0	0.0	0.00	0.00	0.00
300.0	0.00	0.00	300.0	0.0	0.0	0.0	0.00	0.00	0.00
400.0	0.00	0.00	400.0	0.0	0.0	0.0	0.00	0.00	0.00
500.0	0.00	0.00	500.0	0.0	0.0	0.0	0.00	0.00	0.00
600.0	0.00	0.00	600.0	0.0	0.0	0.0	0.00	0.00	0.00
700.0	0.00	0.00	700.0	0.0	0.0	0.0	0.00	0.00	0.00
800.0	0.00	0.00	800.0	0.0	0.0	0.0	0.00	0.00	0.00
900.0	0.00	0.00	900.0	0.0	0.0	0.0	0.00	0.00	0.00
1,000.0	0.00	0.00	1,000.0	0.0	0.0	0.0	0.00	0.00	0.00
1,100.0	0.00	0.00	1,100.0	0.0	0.0	0.0	0.00	0.00	0.00
1,200.0	0.00	0.00	1,200.0	0.0	0.0	0.0	0.00	0.00	0.00
1,300.0	0.00	0.00	1,300.0	0.0	0.0	0.0	0.00	0.00	0.00
1,400.0	0.00	0.00	1,400.0	0.0	0.0	0.0	0.00	0.00	0.00
1,500.0	0.00	0.00	1,500.0	0.0	0.0	0.0	0.00	0.00	0.00
1,600.0	0.00	0.00	1,600.0	0.0	0.0	0.0	0.00	0.00	0.00
1,700.0	0.00	0.00	1,700.0	0.0	0.0	0.0	0.00	0.00	0.00
1,800.0	0.00	0.00	1,800.0	0.0	0.0	0.0	0.00	0.00	0.00
1,900.0	0.00	0.00	1,900.0	0.0	0.0	0.0	0.00	0.00	0.00
2,000.0	0.00	0.00	2,000.0	0.0	0.0	0.0	0.00	0.00	0.00
KOP - Start Build 1.50									
2,100.0	1.50	81.28	2,100.0	0.2	1.3	-1.3	1.50	1.50	0.00
2,200.0	3.00	81.28	2,199.9	0.8	5.2	-5.2	1.50	1.50	0.00
2,300.0	4.50	81.28	2,299.7	1.8	11.6	-11.7	1.50	1.50	0.00
2,400.0	6.00	81.28	2,399.3	3.2	20.7	-20.8	1.50	1.50	0.00
2,500.0	7.50	81.28	2,498.6	5.0	32.3	-32.4	1.50	1.50	0.00
2,600.0	9.00	81.28	2,597.5	7.1	46.5	-46.7	1.50	1.50	0.00
2,700.0	10.50	81.28	2,696.1	9.7	63.2	-63.5	1.50	1.50	0.00
2,800.0	12.00	81.28	2,794.2	12.6	82.5	-82.8	1.50	1.50	0.00
2,900.0	13.50	81.28	2,891.7	16.0	104.3	-104.7	1.50	1.50	0.00
3,000.0	15.00	81.28	2,988.6	19.7	128.7	-129.1	1.50	1.50	0.00
3,100.0	16.50	81.28	3,084.9	23.8	155.5	-156.1	1.50	1.50	0.00
3,186.7	17.80	81.28	3,167.7	27.7	180.8	-181.4	1.50	1.50	0.00
3,200.0	17.80	81.28	3,180.4	28.3	184.8	-185.5	0.00	0.00	0.00
3,300.0	17.80	81.28	3,275.6	33.0	215.0	-215.8	0.00	0.00	0.00
3,400.0	17.80	81.28	3,370.8	37.6	245.2	-246.1	0.00	0.00	0.00
3,500.0	17.80	81.28	3,466.0	42.2	275.4	-276.4	0.00	0.00	0.00
3,600.0	17.80	81.28	3,561.2	46.9	305.6	-306.8	0.00	0.00	0.00
3,666.2	17.80	81.28	3,624.2	49.9	325.6	-326.8	0.00	0.00	0.00
3,700.0	17.12	81.28	3,656.5	51.5	335.7	-336.9	2.00	-2.00	0.00
3,800.0	15.12	81.28	3,752.5	55.7	363.1	-364.5	2.00	-2.00	0.00
3,900.0	13.12	81.28	3,849.5	59.4	387.2	-388.7	2.00	-2.00	0.00
4,000.0	11.12	81.28	3,947.3	62.5	408.0	-409.5	2.00	-2.00	0.00
4,100.0	9.12	81.28	4,045.7	65.2	425.4	-427.0	2.00	-2.00	0.00
4,200.0	7.12	81.28	4,144.7	67.3	439.3	-441.0	2.00	-2.00	0.00
4,300.0	5.12	81.28	4,244.1	69.0	449.9	-451.6	2.00	-2.00	0.00
4,400.0	3.12	81.28	4,343.9	70.1	457.0	-458.7	2.00	-2.00	0.00
4,500.0	1.12	81.28	4,443.8	70.6	460.7	-462.4	2.00	-2.00	0.00
4,556.2	0.00	0.00	4,500.0	70.7	461.2	-462.9	2.00	-2.00	0.00
4,600.0	0.00	0.00	4,543.8	70.7	461.2	-462.9	0.00	0.00	0.00
4,700.0	0.00	0.00	4,643.8	70.7	461.2	-462.9	0.00	0.00	0.00
4,800.0	0.00	0.00	4,743.8	70.7	461.2	-462.9	0.00	0.00	0.00
4,900.0	0.00	0.00	4,843.8	70.7	461.2	-462.9	0.00	0.00	0.00

<b>Database:</b>	US_EDM	<b>Local Co-ordinate Reference:</b>	Well Ward W-20-19HC
<b>Company:</b>	Bayswater Exploration & Production, LLC	<b>TVD Reference:</b>	WELL @ 4750.0ft (RKB - 23')
<b>Project:</b>	SEC.20-T6N-R66W	<b>MD Reference:</b>	WELL @ 4750.0ft (RKB - 23')
<b>Site:</b>	Ward 20-M Pad Sec. 20-T6N-R66W	<b>North Reference:</b>	True
<b>Well:</b>	Ward W-20-19HC	<b>Survey Calculation Method:</b>	Minimum Curvature
<b>Wellbore:</b>	Wellbore #1		
<b>Design:</b>	Plan #2 (6-14-16)		

Planned Survey									
Measured Depth (ft)	Inclination (°)	Azimuth (°)	Vertical Depth (ft)	+N/-S (ft)	+E/-W (ft)	Vertical Section (ft)	Dogleg Rate (°/100usft)	Build Rate (°/100usft)	Turn Rate (°/100usft)
5,000.0	0.00	0.00	4,943.8	70.7	461.2	-462.9	0.00	0.00	0.00
5,100.0	0.00	0.00	5,043.8	70.7	461.2	-462.9	0.00	0.00	0.00
5,200.0	0.00	0.00	5,143.8	70.7	461.2	-462.9	0.00	0.00	0.00
5,300.0	0.00	0.00	5,243.8	70.7	461.2	-462.9	0.00	0.00	0.00
5,400.0	0.00	0.00	5,343.8	70.7	461.2	-462.9	0.00	0.00	0.00
5,500.0	0.00	0.00	5,443.8	70.7	461.2	-462.9	0.00	0.00	0.00
5,600.0	0.00	0.00	5,543.8	70.7	461.2	-462.9	0.00	0.00	0.00
5,700.0	0.00	0.00	5,643.8	70.7	461.2	-462.9	0.00	0.00	0.00
5,800.0	0.00	0.00	5,743.8	70.7	461.2	-462.9	0.00	0.00	0.00
5,900.0	0.00	0.00	5,843.8	70.7	461.2	-462.9	0.00	0.00	0.00
6,000.0	0.00	0.00	5,943.8	70.7	461.2	-462.9	0.00	0.00	0.00
6,100.0	0.00	0.00	6,043.8	70.7	461.2	-462.9	0.00	0.00	0.00
6,200.0	0.00	0.00	6,143.8	70.7	461.2	-462.9	0.00	0.00	0.00
6,300.0	0.00	0.00	6,243.8	70.7	461.2	-462.9	0.00	0.00	0.00
6,400.0	0.00	0.00	6,343.8	70.7	461.2	-462.9	0.00	0.00	0.00
6,465.2	0.00	0.00	6,409.0	70.7	461.2	-462.9	0.00	0.00	0.00
Start Build 8.00									
6,500.0	2.79	268.17	6,443.8	70.7	460.4	-462.1	8.01	8.01	0.00
6,600.0	10.79	268.17	6,543.0	70.3	448.5	-450.3	8.00	8.00	0.00
6,700.0	18.79	268.17	6,639.6	69.5	423.1	-424.8	8.00	8.00	0.00
6,800.0	26.79	268.17	6,731.7	68.2	384.4	-386.0	8.00	8.00	0.00
6,900.0	34.79	268.17	6,817.6	66.6	333.2	-334.9	8.00	8.00	0.00
7,000.0	42.80	268.17	6,895.4	64.6	270.7	-272.3	8.00	8.00	0.00
7,100.0	50.80	268.17	6,963.8	62.3	197.9	-199.5	8.00	8.00	0.00
7,200.0	58.80	268.17	7,021.4	59.7	116.3	-117.8	8.00	8.00	0.00
7,300.0	66.80	268.17	7,067.1	56.8	27.4	-28.9	8.00	8.00	0.00
7,400.0	74.80	268.17	7,100.0	53.8	-66.9	65.4	8.00	8.00	0.00
7,500.0	82.81	268.17	7,119.4	50.7	-164.8	163.4	8.00	8.00	0.00
7,592.2	90.18	268.17	7,125.0	47.7	-256.7	255.4	8.00	8.00	0.00
7,592.3	90.18	268.17	7,125.0	47.7	-256.9	255.5	0.00	0.00	0.00
Start DLS 2.00 TFO 90.29									
7,600.0	90.18	268.32	7,125.0	47.5	-264.5	263.2	2.01	-0.01	2.01
7,621.5	90.18	268.75	7,124.9	46.9	-286.1	284.7	2.00	-0.01	2.00
7,700.0	90.18	268.75	7,124.7	45.2	-364.5	363.2	0.00	0.00	0.00
7,800.0	90.18	268.75	7,124.4	43.1	-464.5	463.2	0.00	0.00	0.00
7,900.0	90.18	268.75	7,124.0	40.9	-564.5	563.2	0.00	0.00	0.00
8,000.0	90.18	268.75	7,123.7	38.7	-664.5	663.2	0.00	0.00	0.00
8,100.0	90.18	268.75	7,123.4	36.5	-764.4	763.2	0.00	0.00	0.00
8,200.0	90.18	268.75	7,123.1	34.3	-864.4	863.2	0.00	0.00	0.00
8,300.0	90.18	268.75	7,122.8	32.2	-964.4	963.2	0.00	0.00	0.00
8,400.0	90.18	268.75	7,122.5	30.0	-1,064.4	1,063.2	0.00	0.00	0.00
8,500.0	90.18	268.75	7,122.2	27.8	-1,164.3	1,163.2	0.00	0.00	0.00
8,600.0	90.18	268.75	7,121.9	25.6	-1,264.3	1,263.2	0.00	0.00	0.00
8,700.0	90.18	268.75	7,121.6	23.5	-1,364.3	1,363.2	0.00	0.00	0.00
8,800.0	90.18	268.75	7,121.3	21.3	-1,464.3	1,463.2	0.00	0.00	0.00
8,900.0	90.18	268.75	7,121.0	19.1	-1,564.2	1,563.2	0.00	0.00	0.00
9,000.0	90.18	268.75	7,120.7	16.9	-1,664.2	1,663.2	0.00	0.00	0.00
9,100.0	90.18	268.75	7,120.3	14.8	-1,764.2	1,763.2	0.00	0.00	0.00
9,200.0	90.18	268.75	7,120.0	12.6	-1,864.2	1,863.2	0.00	0.00	0.00
9,300.0	90.18	268.75	7,119.7	10.4	-1,964.1	1,963.2	0.00	0.00	0.00
9,400.0	90.18	268.75	7,119.4	8.2	-2,064.1	2,063.2	0.00	0.00	0.00
9,500.0	90.18	268.75	7,119.1	6.1	-2,164.1	2,163.2	0.00	0.00	0.00
9,600.0	90.18	268.75	7,118.8	3.9	-2,264.1	2,263.2	0.00	0.00	0.00
9,700.0	90.18	268.75	7,118.5	1.7	-2,364.0	2,363.2	0.00	0.00	0.00

<b>Database:</b>	US_EDM	<b>Local Co-ordinate Reference:</b>	Well Ward W-20-19HC
<b>Company:</b>	Bayswater Exploration & Production, LLC	<b>TVD Reference:</b>	WELL @ 4750.0ft (RKB - 23')
<b>Project:</b>	SEC.20-T6N-R66W	<b>MD Reference:</b>	WELL @ 4750.0ft (RKB - 23')
<b>Site:</b>	Ward 20-M Pad Sec. 20-T6N-R66W	<b>North Reference:</b>	True
<b>Well:</b>	Ward W-20-19HC	<b>Survey Calculation Method:</b>	Minimum Curvature
<b>Wellbore:</b>	Wellbore #1		
<b>Design:</b>	Plan #2 (6-14-16)		

Planned Survey									
Measured Depth (ft)	Inclination (°)	Azimuth (°)	Vertical Depth (ft)	+N/-S (ft)	+E/-W (ft)	Vertical Section (ft)	Dogleg Rate (°/100usft)	Build Rate (°/100usft)	Turn Rate (°/100usft)
9,800.0	90.18	268.75	7,118.2	-0.5	-2,464.0	2,463.2	0.00	0.00	0.00
9,900.0	90.18	268.75	7,117.9	-2.7	-2,564.0	2,563.2	0.00	0.00	0.00
10,000.0	90.18	268.75	7,117.6	-4.8	-2,664.0	2,663.2	0.00	0.00	0.00
10,100.0	90.18	268.75	7,117.3	-7.0	-2,763.9	2,763.2	0.00	0.00	0.00
10,200.0	90.18	268.75	7,116.9	-9.2	-2,863.9	2,863.2	0.00	0.00	0.00
10,300.0	90.18	268.75	7,116.6	-11.4	-2,963.9	2,963.2	0.00	0.00	0.00
10,400.0	90.18	268.75	7,116.3	-13.5	-3,063.9	3,063.1	0.00	0.00	0.00
10,500.0	90.18	268.75	7,116.0	-15.7	-3,163.8	3,163.1	0.00	0.00	0.00
10,600.0	90.18	268.75	7,115.7	-17.9	-3,263.8	3,263.1	0.00	0.00	0.00
10,700.0	90.18	268.75	7,115.4	-20.1	-3,363.8	3,363.1	0.00	0.00	0.00
10,800.0	90.18	268.75	7,115.1	-22.2	-3,463.8	3,463.1	0.00	0.00	0.00
10,900.0	90.18	268.75	7,114.8	-24.4	-3,563.8	3,563.1	0.00	0.00	0.00
11,000.0	90.18	268.75	7,114.5	-26.6	-3,663.7	3,663.1	0.00	0.00	0.00
11,100.0	90.18	268.75	7,114.2	-28.8	-3,763.7	3,763.1	0.00	0.00	0.00
11,200.0	90.18	268.75	7,113.9	-31.0	-3,863.7	3,863.1	0.00	0.00	0.00
11,300.0	90.18	268.75	7,113.5	-33.1	-3,963.7	3,963.1	0.00	0.00	0.00
11,400.0	90.18	268.75	7,113.2	-35.3	-4,063.6	4,063.1	0.00	0.00	0.00
11,500.0	90.18	268.75	7,112.9	-37.5	-4,163.6	4,163.1	0.00	0.00	0.00
11,600.0	90.18	268.75	7,112.6	-39.7	-4,263.6	4,263.1	0.00	0.00	0.00
11,700.0	90.18	268.75	7,112.3	-41.8	-4,363.6	4,363.1	0.00	0.00	0.00
11,800.0	90.18	268.75	7,112.0	-44.0	-4,463.5	4,463.1	0.00	0.00	0.00
11,900.0	90.18	268.75	7,111.7	-46.2	-4,563.5	4,563.1	0.00	0.00	0.00
12,000.0	90.18	268.75	7,111.4	-48.4	-4,663.5	4,663.1	0.00	0.00	0.00
12,100.0	90.18	268.75	7,111.1	-50.5	-4,763.5	4,763.1	0.00	0.00	0.00
12,200.0	90.18	268.75	7,110.8	-52.7	-4,863.4	4,863.1	0.00	0.00	0.00
12,300.0	90.18	268.75	7,110.5	-54.9	-4,963.4	4,963.1	0.00	0.00	0.00
12,400.0	90.18	268.75	7,110.1	-57.1	-5,063.4	5,063.1	0.00	0.00	0.00
12,448.0	90.18	268.75	7,110.0	-58.1	-5,111.4	5,111.1	0.00	0.00	0.00
Start DLS 2.00 TFO -83.67									
12,465.6	90.22	268.40	7,109.9	-58.6	-5,129.0	5,128.7	2.00	0.22	-1.99
12,500.0	90.22	268.40	7,109.8	-59.5	-5,163.4	5,163.1	0.00	0.00	0.00
12,600.0	90.22	268.40	7,109.4	-62.3	-5,263.3	5,263.1	0.00	0.00	0.00
12,700.0	90.22	268.40	7,109.1	-65.1	-5,363.3	5,363.1	0.00	0.00	0.00
12,800.0	90.22	268.40	7,108.7	-67.9	-5,463.2	5,463.1	0.00	0.00	0.00
12,900.0	90.22	268.40	7,108.3	-70.7	-5,563.2	5,563.1	0.00	0.00	0.00
13,000.0	90.22	268.40	7,107.9	-73.5	-5,663.2	5,663.1	0.00	0.00	0.00
13,100.0	90.22	268.40	7,107.5	-76.2	-5,763.1	5,763.1	0.00	0.00	0.00
13,200.0	90.22	268.40	7,107.2	-79.0	-5,863.1	5,863.1	0.00	0.00	0.00
13,300.0	90.22	268.40	7,106.8	-81.8	-5,963.0	5,963.1	0.00	0.00	0.00
13,400.0	90.22	268.40	7,106.4	-84.6	-6,063.0	6,063.1	0.00	0.00	0.00
13,500.0	90.22	268.40	7,106.0	-87.4	-6,163.0	6,163.1	0.00	0.00	0.00
13,600.0	90.22	268.40	7,105.7	-90.2	-6,262.9	6,263.1	0.00	0.00	0.00
13,700.0	90.22	268.40	7,105.3	-93.0	-6,362.9	6,363.1	0.00	0.00	0.00
13,800.0	90.22	268.40	7,104.9	-95.8	-6,462.8	6,463.1	0.00	0.00	0.00
13,900.0	90.22	268.40	7,104.5	-98.6	-6,562.8	6,563.1	0.00	0.00	0.00
14,000.0	90.22	268.40	7,104.2	-101.3	-6,662.8	6,663.1	0.00	0.00	0.00
14,100.0	90.22	268.40	7,103.8	-104.1	-6,762.7	6,763.1	0.00	0.00	0.00
14,200.0	90.22	268.40	7,103.4	-106.9	-6,862.7	6,863.1	0.00	0.00	0.00
14,300.0	90.22	268.40	7,103.0	-109.7	-6,962.6	6,963.1	0.00	0.00	0.00
14,400.0	90.22	268.40	7,102.7	-112.5	-7,062.6	7,063.1	0.00	0.00	0.00
14,500.0	90.22	268.40	7,102.3	-115.3	-7,162.6	7,163.1	0.00	0.00	0.00
14,600.0	90.22	268.40	7,101.9	-118.1	-7,262.5	7,263.1	0.00	0.00	0.00
14,700.0	90.22	268.40	7,101.5	-120.9	-7,362.5	7,363.1	0.00	0.00	0.00

<b>Database:</b>	US_EDM	<b>Local Co-ordinate Reference:</b>	Well Ward W-20-19HC
<b>Company:</b>	Bayswater Exploration & Production, LLC	<b>TVD Reference:</b>	WELL @ 4750.0ft (RKB - 23')
<b>Project:</b>	SEC.20-T6N-R66W	<b>MD Reference:</b>	WELL @ 4750.0ft (RKB - 23')
<b>Site:</b>	Ward 20-M Pad Sec. 20-T6N-R66W	<b>North Reference:</b>	True
<b>Well:</b>	Ward W-20-19HC	<b>Survey Calculation Method:</b>	Minimum Curvature
<b>Wellbore:</b>	Wellbore #1		
<b>Design:</b>	Plan #2 (6-14-16)		

Planned Survey									
Measured Depth (ft)	Inclination (°)	Azimuth (°)	Vertical Depth (ft)	+N/-S (ft)	+E/-W (ft)	Vertical Section (ft)	Dogleg Rate (°/100usft)	Build Rate (°/100usft)	Turn Rate (°/100usft)
14,800.0	90.22	268.40	7,101.1	-123.6	-7,462.4	7,463.1	0.00	0.00	0.00
14,900.0	90.22	268.40	7,100.8	-126.4	-7,562.4	7,563.1	0.00	0.00	0.00
15,000.0	90.22	268.40	7,100.4	-129.2	-7,662.4	7,663.1	0.00	0.00	0.00
15,100.0	90.22	268.40	7,100.0	-132.0	-7,762.3	7,763.1	0.00	0.00	0.00
15,103.5	90.22	268.40	7,100.0	-132.1	-7,765.8	7,766.6	0.00	0.00	0.00
Start DLS 2.00 TFO -82.15									
15,179.9	90.42	266.89	7,099.6	-135.2	-7,842.1	7,843.0	2.00	0.27	-1.98
15,200.0	90.42	266.89	7,099.4	-136.3	-7,862.2	7,863.1	0.00	0.00	0.00
15,300.0	90.42	266.89	7,098.7	-141.8	-7,962.1	7,963.0	0.00	0.00	0.00
15,400.0	90.42	266.89	7,097.9	-147.2	-8,061.9	8,063.0	0.00	0.00	0.00
15,500.0	90.42	266.89	7,097.2	-152.6	-8,161.8	8,163.0	0.00	0.00	0.00
15,600.0	90.42	266.89	7,096.5	-158.0	-8,261.6	8,262.9	0.00	0.00	0.00
15,700.0	90.42	266.89	7,095.7	-163.5	-8,361.5	8,362.9	0.00	0.00	0.00
15,800.0	90.42	266.89	7,095.0	-168.9	-8,461.3	8,462.8	0.00	0.00	0.00
15,900.0	90.42	266.89	7,094.2	-174.3	-8,561.2	8,562.8	0.00	0.00	0.00
16,000.0	90.42	266.89	7,093.5	-179.7	-8,661.0	8,662.7	0.00	0.00	0.00
16,100.0	90.42	266.89	7,092.8	-185.2	-8,760.9	8,762.7	0.00	0.00	0.00
16,200.0	90.42	266.89	7,092.0	-190.6	-8,860.7	8,862.7	0.00	0.00	0.00
16,300.0	90.42	266.89	7,091.3	-196.0	-8,960.6	8,962.6	0.00	0.00	0.00
16,400.0	90.42	266.89	7,090.5	-201.4	-9,060.4	9,062.6	0.00	0.00	0.00
16,500.0	90.42	266.89	7,089.8	-206.9	-9,160.3	9,162.5	0.00	0.00	0.00
16,600.0	90.42	266.89	7,089.1	-212.3	-9,260.1	9,262.5	0.00	0.00	0.00
16,700.0	90.42	266.89	7,088.3	-217.7	-9,360.0	9,362.5	0.00	0.00	0.00
16,800.0	90.42	266.89	7,087.6	-223.1	-9,459.8	9,462.4	0.00	0.00	0.00
16,900.0	90.42	266.89	7,086.8	-228.6	-9,559.7	9,562.4	0.00	0.00	0.00
17,000.0	90.42	266.89	7,086.1	-234.0	-9,659.5	9,662.3	0.00	0.00	0.00
17,100.0	90.42	266.89	7,085.4	-239.4	-9,759.4	9,762.3	0.00	0.00	0.00
17,200.0	90.42	266.89	7,084.6	-244.8	-9,859.2	9,862.3	0.00	0.00	0.00
17,300.0	90.42	266.89	7,083.9	-250.3	-9,959.1	9,962.2	0.00	0.00	0.00
17,400.0	90.42	266.89	7,083.1	-255.7	-10,058.9	10,062.2	0.00	0.00	0.00
17,500.0	90.42	266.89	7,082.4	-261.1	-10,158.8	10,162.1	0.00	0.00	0.00
17,600.0	90.42	266.89	7,081.7	-266.6	-10,258.6	10,262.1	0.00	0.00	0.00
17,700.0	90.42	266.89	7,080.9	-272.0	-10,358.5	10,362.0	0.00	0.00	0.00
17,800.0	90.42	266.89	7,080.2	-277.4	-10,458.3	10,462.0	0.00	0.00	0.00
17,823.0	90.42	266.89	7,080.0	-278.7	-10,481.3	10,485.0	0.00	0.00	0.00
TD at 17823.0									



<b>Database:</b>	US_EDM	<b>Local Co-ordinate Reference:</b>	Well Ward W-20-19HC
<b>Company:</b>	Bayswater Exploration & Production, LLC	<b>TVD Reference:</b>	WELL @ 4750.0ft (RKB - 23')
<b>Project:</b>	SEC.20-T6N-R66W	<b>MD Reference:</b>	WELL @ 4750.0ft (RKB - 23')
<b>Site:</b>	Ward 20-M Pad Sec. 20-T6N-R66W	<b>North Reference:</b>	True
<b>Well:</b>	Ward W-20-19HC	<b>Survey Calculation Method:</b>	Minimum Curvature
<b>Wellbore:</b>	Wellbore #1		
<b>Design:</b>	Plan #2 (6-14-16)		

Design Targets										
Target Name - hit/miss target - Shape	Dip Angle (°)	Dip Dir. (°)	TVD (ft)	+N/-S (ft)	+E/-W (ft)	Northing (usft)	Easting (usft)	Latitude	Longitude	
SHL 274'FSL, 213'FEL, : - plan hits target center - Point	0.00	0.00	1.0	0.0	0.0	1,413,806.95	3,196,666.30	40.467150	-104.793156	
BHL 319'FSL, 470'FWL, - plan hits target center - Point	0.00	0.00	7,080.0	-278.7	-10,481.3	1,413,444.76	3,186,187.92	40.466379	-104.830825	
Boreline Vertex 322'FSL - plan hits target center - Point	0.00	0.00	7,100.0	-132.1	-7,765.9	1,413,612.94	3,188,902.03	40.466784	-104.821066	
Boreline Vertex 324'FSL - plan hits target center - Point	0.00	0.00	7,110.0	-58.1	-5,111.4	1,413,708.09	3,191,555.74	40.466989	-104.811526	
LPL 325'FSL, 470'FEL, : - plan hits target center - Point	0.00	0.00	7,125.0	47.7	-256.8	1,413,852.62	3,196,409.11	40.467281	-104.794079	

Casing Points					
Measured Depth (ft)	Vertical Depth (ft)	Name	Casing Diameter (")	Hole Diameter (")	
7,592.3	7,125.0	7"	7	8-3/4	

Plan Annotations					
Measured Depth (ft)	Vertical Depth (ft)	Local Coordinates			
		+N/-S (ft)	+E/-W (ft)	Comment	
2,000.0	2,000.0	0.0	0.0	KOP - Start Build 1.50	
6,465.2	6,409.0	27.7	180.8	Start Build 8.00	
7,592.3	7,125.0	49.9	325.6	Start DLS 2.00 TFO 90.29	
12,448.0	7,110.0	70.7	461.2	Start DLS 2.00 TFO -83.67	
15,103.5	7,100.0	70.7	461.2	Start DLS 2.00 TFO -82.15	
17,823.0	7,080.0	47.7	-256.8	TD at 17823.0	