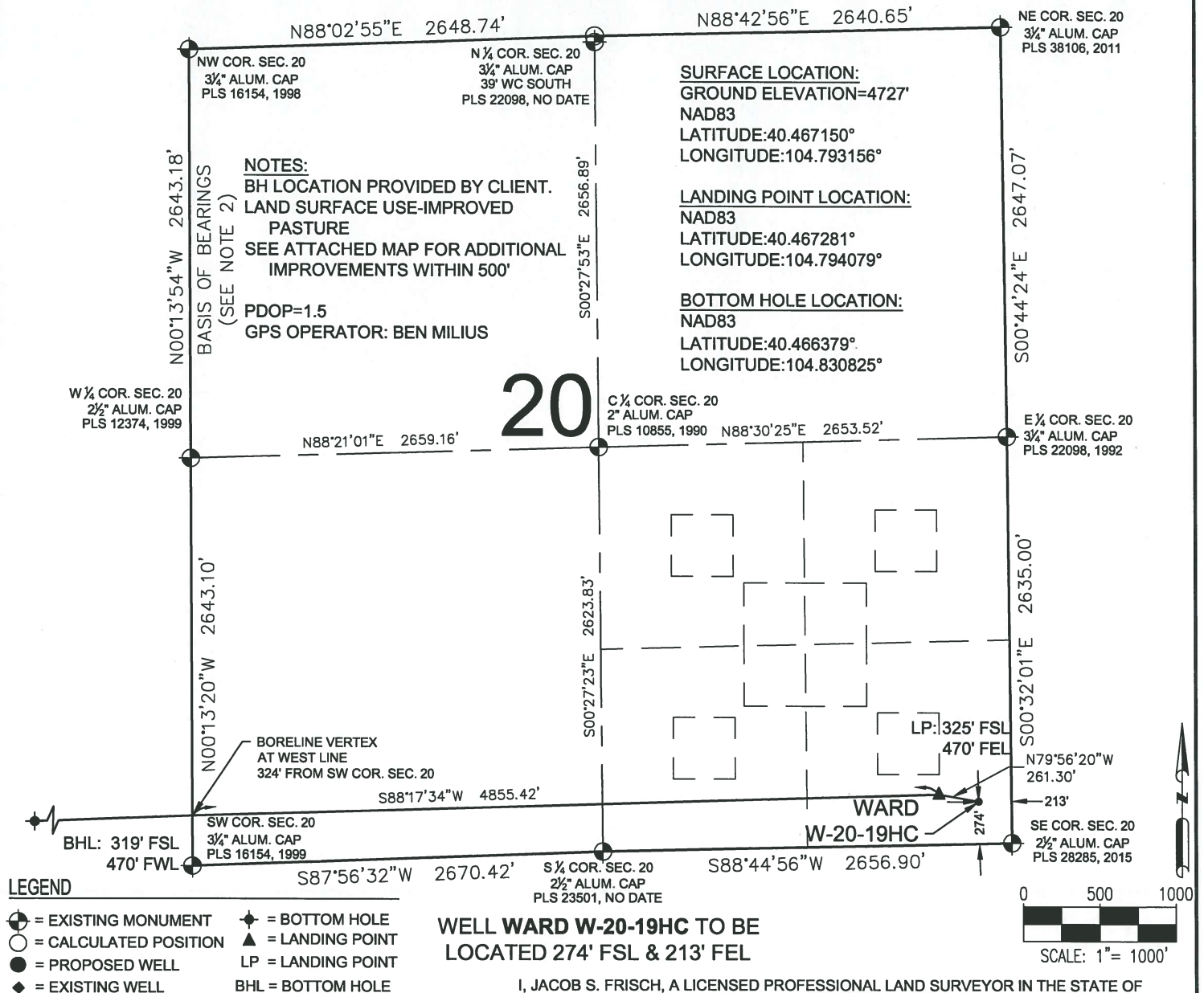


# WARD W-20-19HC WELL LOCATION CERTIFICATE



- LEGEND**
- ⊕ = EXISTING MONUMENT
  - = CALCULATED POSITION
  - = PROPOSED WELL
  - ◆ = EXISTING WELL
  - ⬮ = BOTTOM HOLE
  - ▲ = LANDING POINT
  - LP = LANDING POINT
  - BHL = BOTTOM HOLE
- NOTES:**
1. THIS FIELD SURVEY CONFORMS TO THE MINIMUM STANDARDS SET BY THE C.O.G.C.C., RULE NO. 215
  2. BEARINGS ARE BASED ON THE ASSUMPTION THAT THE WEST LINE OF THE NORTHWEST QUARTER OF SECTION 20, BEARS N00°13'54"W BETWEEN THE MONUMENTS SHOWN HEREON.
  3. GRID DISTANCES ARE SHOWN, AS GPS MEASURED IN THE FIELD, WITH TIES TO WELLS MEASURED PERPENDICULAR TO SECTION LINES. TO GET GROUND DISTANCES MULTIPLY THE SHOWN DISTANCE BY 1.000257471.
  4. ELEVATIONS SHOWN ARE NAVD 88, AS DERIVED BY GPS OBSERVATIONS.
  5. SECTION MONUMENTS RECOVERED ON 8/19/14, 6/9/15, AND 7/8/15. WELLS STAKED ON 7/8/15. REVISED WELL LOCATION STAKED ON 10/19/15.



## WELL WARD W-20-19HC TO BE LOCATED 274' FSL & 213' FEL

I, JACOB S. FRISCH, A LICENSED PROFESSIONAL LAND SURVEYOR IN THE STATE OF COLORADO DO HEREBY CERTIFY TO **BAYSWATER EXPLORATION & PRODUCTION, LLC**, THAT THE SURVEY AND WELL LOCATION CERTIFICATE SHOWN HEREON WERE DONE BY ME OR UNDER MY DIRECT SUPERVISION AND THAT THE DRAWING SHOWN HEREON ACCURATELY DEPICTS THE PROPOSED LOCATION OF THE WELL. THIS CERTIFICATE DOES NOT REPRESENT A LAND SURVEY PLAT OR IMPROVEMENT SURVEY PLAT AS DEFINED BY C.R.S. 38-51-102 AND CANNOT BE RELIED UPON TO DETERMINE OWNERSHIP.

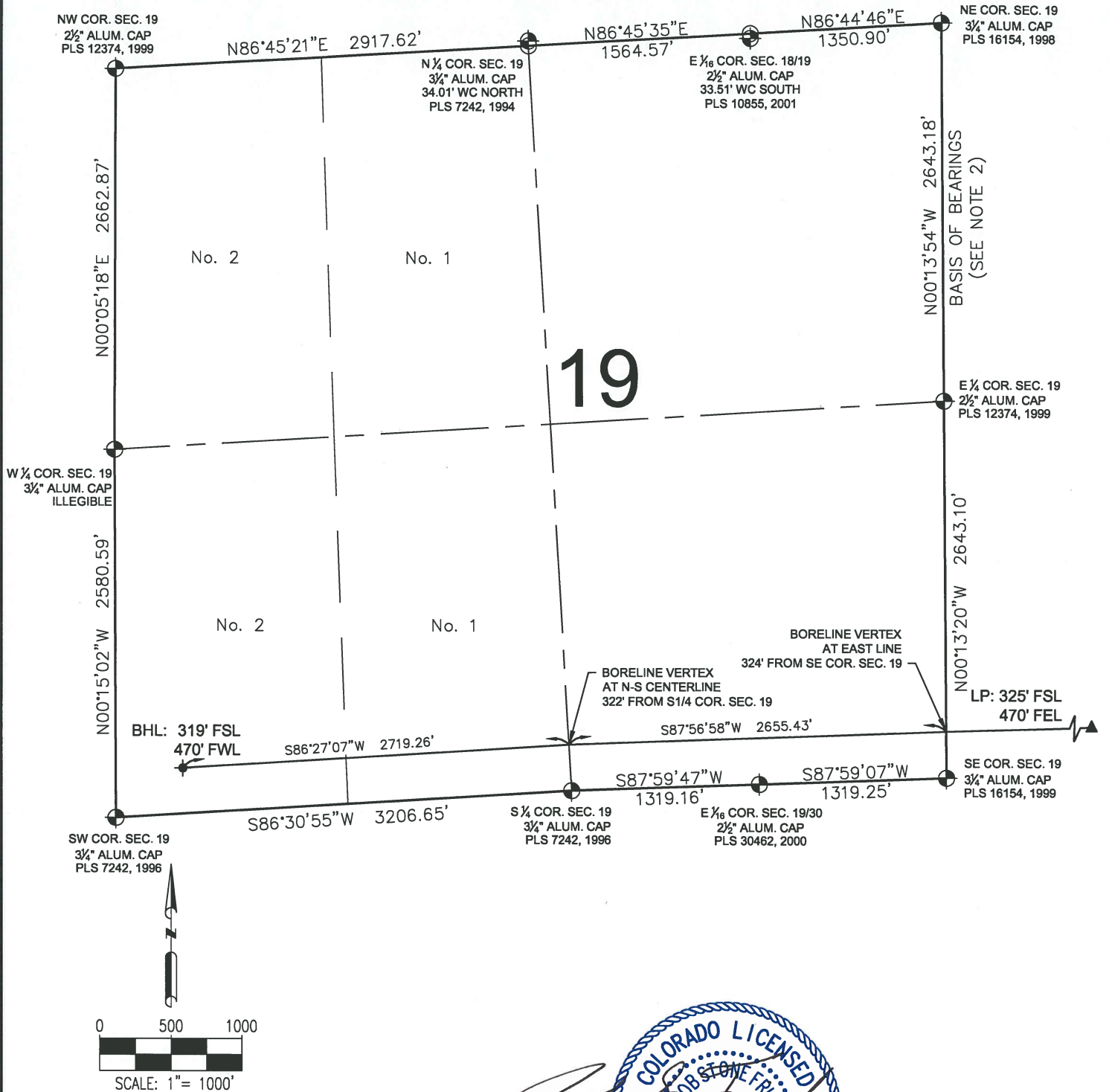
JACOB S. FRISCH, PLS 38149  
DATE: 02-16-16  
JOB NO: B14.BEP.0102  
FOR AND ON BEHALF OF P.F.S., LLC



SHEET 1 OF 2

PREPARED BY:  <b>PFS</b> Petroleum Field Services, LLC 7535 Hilltop Circle Denver, CO 80221	FIELD DATE: <b>10-19-15</b> DRAWING DATE: <b>02-15-16</b> BY: <b>KAD</b> CHECKED BY: <b>JLW</b>	WELL NAME: <b>WARD W-20-19HC</b> SURFACE LOCATION: <b>SE1/4 SE1/4 SEC. 20, T6N, R66W, 6TH P.M.</b> <b>WELD COUNTY, COLORADO</b>	PREPARED FOR:  <b>BAYSWATER</b> EXPLORATION AND PRODUCTION, LLC
--	--	---	--

# WARD W-20-19HC WELL LOCATION CERTIFICATE



## LEGEND

- ⊕ = EXISTING MONUMENT
- ⊙ = CALCULATED POSITION
- = PROPOSED WELL
- ◆ = EXISTING WELL
- ⬮ = BOTTOM HOLE
- ▲ = LANDING POINT
- LP = LANDING POINT
- BHL = BOTTOM HOLE

JACOB S. FRISCH, PLS 38149  
DATE: 02-16-16  
JOB NO: B14.BEP.0102  
FOR AND ON BEHALF OF P.F.S., LLC



SHEET 2 OF 2

PREPARED BY:  <b>PFS</b> Petroleum Field Services, LLC 7535 Hilltop Circle Denver, CO 80221	FIELD DATE: <b>10-19-15</b> DRAWING DATE: <b>02-15-16</b> BY: <b>KAD</b> CHECKED BY: <b>JLW</b>	WELL NAME: <b>WARD W-20-19HC</b> SURFACE LOCATION: <b>SE1/4 SE1/4 SEC. 20, T6N, R66W, 6TH P.M.</b> <b>WELD COUNTY, COLORADO</b>	PREPARED FOR:  <b>BAYSWATER</b> EXPLORATION AND PRODUCTION, LLC
--	--	---	--