

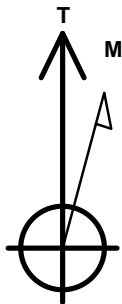
Bayswater Exploration & Production, LLC

Well Name: **Ward V-20-19HN**

Surface Location: Ward 20-M Pad Sec. 20-T6N-R66W
North American Datum 1983 , US State Plane 1983 Colorado Northern Zone
Ground Elevation: 4727.0
+N/-S +E/-W Northing Easting Latitude Longitude Slot
0.0 0.0 1413822.24 3196666.17 40.467192 -104.793156
RKB - 23' WELL @ 4750.0ft (RKB - 23')

DESIGN TARGET DETAILS

Name	TVD	+N/-S	+E/-W	Shape
SHL 289'FSL, 213'FEL, SEC.20	1.0	0.0	0.0	Point
BHL 471'FSL, 470'FWL, SEC.19	7000.0	-141.7	-10480.7	Point
Boreline Vertex 476'FSL	7020.0	6.7	-7773.3	Point
Boreline Vertex 478'FSL	7030.0	80.7	-5110.8	Point
LPL 480'FSL, 470'FEL, SEC.20	7045.0	187.6	-257.1	Point



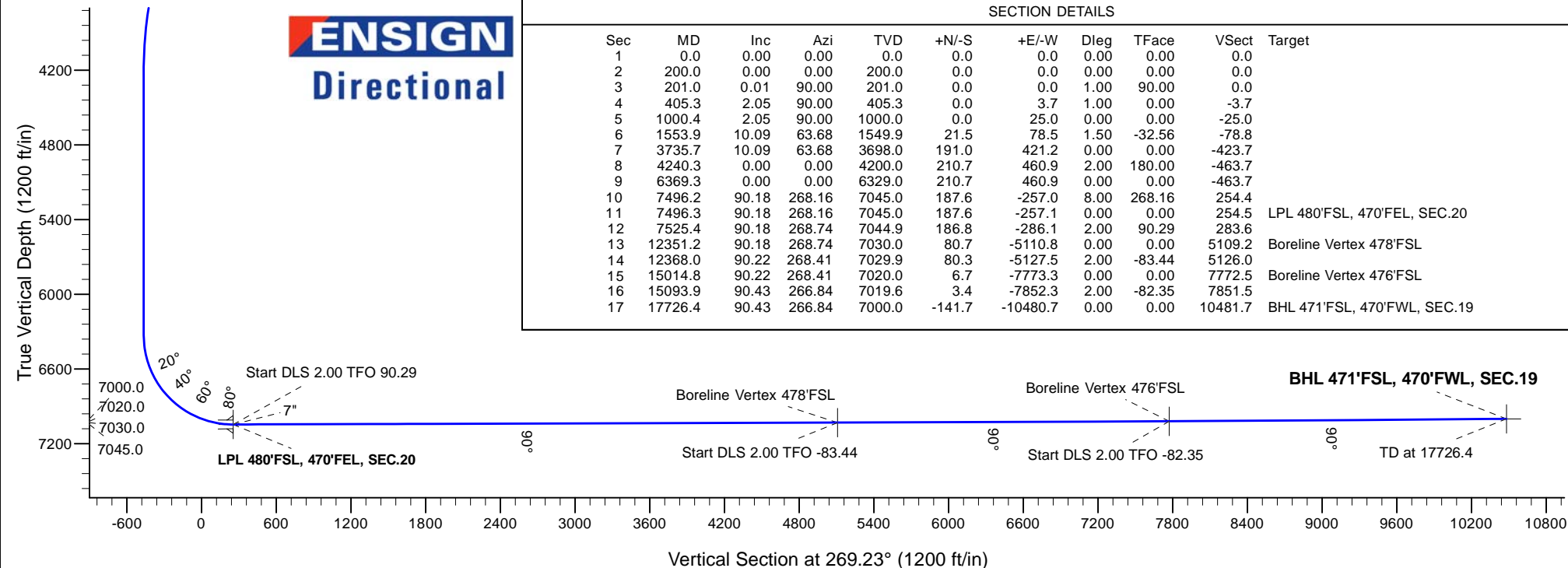
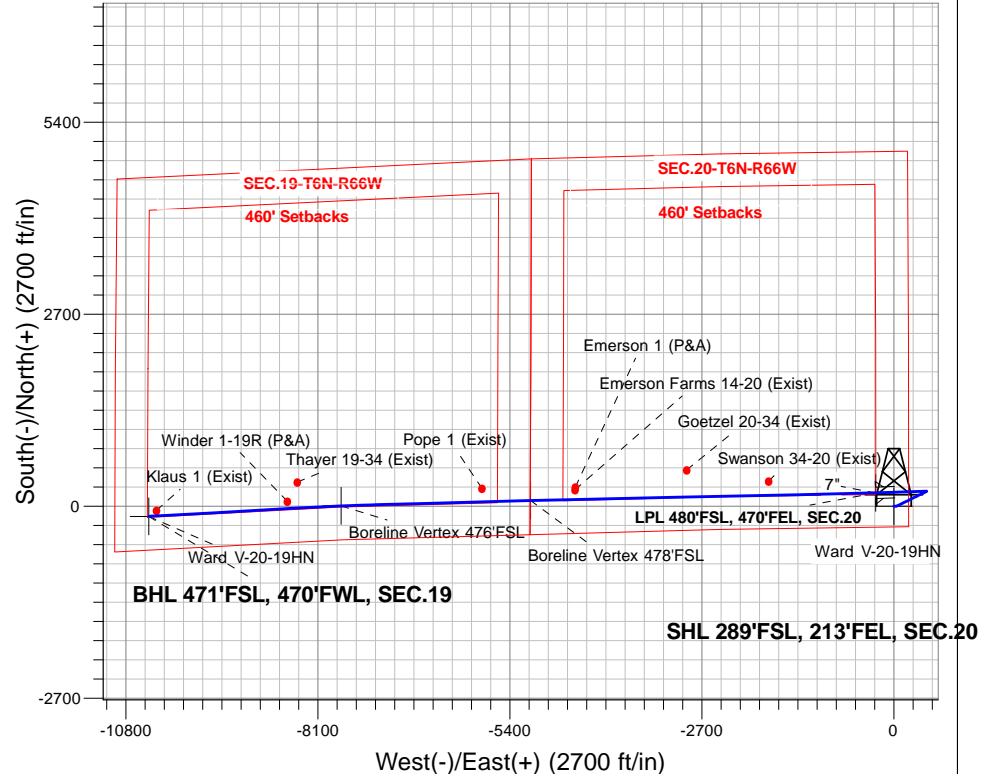
Azimuths to True North
Magnetic North: 8.21°

Magnetic Field
Strength: 52636.8snT
Dip Angle: 66.93°
Date: 6/17/2016
Model: IGRF2010

Ward 20-M Pad Sec. 20-T6N-R66W
Ward V-20-19HN
Plan #2 (6-14-16)
7:33, June 17 2016

ANNOTATIONS

TVD	MD	Annotation
200.0	200.0	KOP - Start Build 1.00
1000.0	1000.4	Start DLS 1.50 TFO -32.56
7045.0	7496.3	Start DLS 2.00 TFO 90.29
7030.0	12351.2	Start DLS 2.00 TFO -83.44
7020.0	15014.8	Start DLS 2.00 TFO -82.35
7000.0	17726.4	TD at 17726.4





Bayswater Exploration & Production, LLC

SEC.20-T6N-R66W

Ward 20-M Pad Sec. 20-T6N-R66W

Ward V-20-19HN

Wellbore #1

Plan: Plan #2 (6-14-16)

Standard Planning Report

17 June, 2016



BAYSWATER
EXPLORATION & PRODUCTION, LLC

Database:	US_EDM	Local Co-ordinate Reference:	Well Ward V-20-19HN
Company:	Bayswater Exploration & Production, LLC	TVD Reference:	WELL @ 4750.0ft (RKB - 23')
Project:	SEC.20-T6N-R66W	MD Reference:	WELL @ 4750.0ft (RKB - 23')
Site:	Ward 20-M Pad Sec. 20-T6N-R66W	North Reference:	True
Well:	Ward V-20-19HN	Survey Calculation Method:	Minimum Curvature
Wellbore:	Wellbore #1		
Design:	Plan #2 (6-14-16)		

Project	SEC.20-T6N-R66W, Weld County, Colorado		
Map System:	US State Plane 1983	System Datum:	Mean Sea Level
Geo Datum:	North American Datum 1983		Using Well Reference Point
Map Zone:	Colorado Northern Zone		Using geodetic scale factor

Site	Ward 20-M Pad Sec. 20-T6N-R66W			
Site Position:		Northing:	1,413,957.04 usft	Latitude: 40.467562
From:	Lat/Long	Easting:	3,196,665.10 usft	Longitude: -104.793156
Position Uncertainty:	0.0 ft	Slot Radius:	13-3/16 "	Grid Convergence: 0.46 °

Well	Ward V-20-19HN			
Well Position	+N/-S	-134.8 ft	Northing:	1,413,822.24 usft
	+E/-W	0.0 ft	Easting:	3,196,666.17 usft
Position Uncertainty		0.0 ft	Wellhead Elevation:	0.0 ft
			Ground Level:	4,727.0 ft

Wellbore	Wellbore #1				
Magnetics	Model Name	Sample Date	Declination (°)	Dip Angle (°)	Field Strength (nT)
	IGRF2010	6/17/2016	8.21	66.93	52,637

Design	Plan #2 (6-14-16)			
Audit Notes:				
Version:	Phase:	PROTOTYPE	Tie On Depth:	0.0
Vertical Section:	Depth From (TVD) (ft)	+N/-S (ft)	+E/-W (ft)	Direction (°)
	0.0	0.0	0.0	269.23

Plan Sections										
Measured Depth (ft)	Inclination (°)	Azimuth (°)	Vertical Depth (ft)	+N/-S (ft)	+E/-W (ft)	Dogleg Rate (°/100usft)	Build Rate (°/100usft)	Turn Rate (°/100usft)	TFO (°)	Target
0.0	0.00	0.00	0.0	0.0	0.0	0.00	0.00	0.00	0.00	
200.0	0.00	0.00	200.0	0.0	0.0	0.00	0.00	0.00	0.00	
201.0	0.01	90.00	201.0	0.0	0.0	1.00	1.00	0.00	90.00	
405.3	2.05	90.00	405.3	0.0	3.7	1.00	1.00	0.00	0.00	
1,000.4	2.05	90.00	1,000.0	0.0	25.0	0.00	0.00	0.00	0.00	
1,553.9	10.09	63.68	1,549.9	21.5	78.5	1.50	1.45	-4.76	-32.56	
3,735.7	10.09	63.68	3,698.0	191.0	421.2	0.00	0.00	0.00	0.00	
4,240.3	0.00	0.00	4,200.0	210.7	460.9	2.00	-2.00	0.00	180.00	
6,369.3	0.00	0.00	6,329.0	210.7	460.9	0.00	0.00	0.00	0.00	
7,496.2	90.18	268.16	7,045.0	187.6	-257.0	8.00	8.00	0.00	268.16	
7,496.3	90.18	268.16	7,045.0	187.6	-257.1	0.00	0.00	0.00	0.00	LPL 480'FSL, 470'FEI
7,525.4	90.18	268.74	7,044.9	186.8	-286.1	2.00	-0.01	2.00	90.29	
12,351.2	90.18	268.74	7,030.0	80.7	-5,110.8	0.00	0.00	0.00	0.00	Boreline Vertex 478'F
12,368.0	90.22	268.41	7,029.9	80.3	-5,127.5	2.00	0.23	-1.99	-83.44	
15,014.8	90.22	268.41	7,020.0	6.7	-7,773.3	0.00	0.00	0.00	0.00	Boreline Vertex 476'F
15,093.9	90.43	266.84	7,019.6	3.4	-7,852.3	2.00	0.27	-1.98	-82.35	
17,726.4	90.43	266.84	7,000.0	-141.7	-10,480.7	0.00	0.00	0.00	0.00	BHL 471'FSL, 470'FW

Database:	US_EDM	Local Co-ordinate Reference:	Well Ward V-20-19HN
Company:	Bayswater Exploration & Production, LLC	TVD Reference:	WELL @ 4750.0ft (RKB - 23')
Project:	SEC.20-T6N-R66W	MD Reference:	WELL @ 4750.0ft (RKB - 23')
Site:	Ward 20-M Pad Sec. 20-T6N-R66W	North Reference:	True
Well:	Ward V-20-19HN	Survey Calculation Method:	Minimum Curvature
Wellbore:	Wellbore #1		
Design:	Plan #2 (6-14-16)		

Planned Survey									
Measured Depth (ft)	Inclination (°)	Azimuth (°)	Vertical Depth (ft)	+N/-S (ft)	+E/-W (ft)	Vertical Section (ft)	Dogleg Rate (°/100usft)	Build Rate (°/100usft)	Turn Rate (°/100usft)
0.0	0.00	0.00	0.0	0.0	0.0	0.0	0.00	0.00	0.00
100.0	0.00	0.00	100.0	0.0	0.0	0.0	0.00	0.00	0.00
200.0	0.00	0.00	200.0	0.0	0.0	0.0	0.00	0.00	0.00
KOP - Start Build 1.00									
201.0	0.01	90.00	201.0	0.0	0.0	0.0	1.00	1.00	0.00
300.0	1.00	90.00	300.0	0.0	0.9	-0.9	1.00	1.00	0.00
400.0	2.00	90.00	400.0	0.0	3.5	-3.5	1.00	1.00	0.00
405.3	2.05	90.00	405.3	0.0	3.7	-3.7	1.00	1.00	0.00
500.0	2.05	90.00	499.9	0.0	7.1	-7.1	0.00	0.00	0.00
600.0	2.05	90.00	599.8	0.0	10.7	-10.7	0.00	0.00	0.00
700.0	2.05	90.00	699.8	0.0	14.2	-14.2	0.00	0.00	0.00
800.0	2.05	90.00	799.7	0.0	17.8	-17.8	0.00	0.00	0.00
900.0	2.05	90.00	899.6	0.0	21.4	-21.4	0.00	0.00	0.00
1,000.0	2.05	90.00	999.6	0.0	25.0	-25.0	0.00	0.00	0.00
1,000.4	2.05	90.00	1,000.0	0.0	25.0	-25.0	0.00	0.00	0.00
Start DLS 1.50 TFO -32.56									
1,100.0	3.41	76.35	1,099.5	0.7	29.7	-29.7	1.50	1.36	-13.70
1,200.0	4.85	70.59	1,199.2	2.8	36.5	-36.6	1.50	1.44	-5.76
1,300.0	6.32	67.49	1,298.7	6.3	45.6	-45.7	1.50	1.47	-3.11
1,400.0	7.80	65.55	1,398.0	11.2	56.9	-57.0	1.50	1.48	-1.93
1,500.0	9.29	64.23	1,496.8	17.6	70.3	-70.6	1.50	1.49	-1.32
1,553.9	10.09	63.68	1,549.9	21.5	78.5	-78.8	1.50	1.49	-1.02
1,600.0	10.09	63.68	1,595.4	25.1	85.7	-86.1	0.00	0.00	0.00
1,700.0	10.09	63.68	1,693.8	32.9	101.4	-101.9	0.00	0.00	0.00
1,800.0	10.09	63.68	1,792.3	40.7	117.1	-117.7	0.00	0.00	0.00
1,900.0	10.09	63.68	1,890.7	48.4	132.8	-133.5	0.00	0.00	0.00
2,000.0	10.09	63.68	1,989.2	56.2	148.5	-149.3	0.00	0.00	0.00
2,100.0	10.09	63.68	2,087.6	64.0	164.3	-165.1	0.00	0.00	0.00
2,200.0	10.09	63.68	2,186.1	71.7	180.0	-180.9	0.00	0.00	0.00
2,300.0	10.09	63.68	2,284.5	79.5	195.7	-196.7	0.00	0.00	0.00
2,400.0	10.09	63.68	2,383.0	87.3	211.4	-212.5	0.00	0.00	0.00
2,500.0	10.09	63.68	2,481.4	95.0	227.1	-228.3	0.00	0.00	0.00
2,600.0	10.09	63.68	2,579.9	102.8	242.8	-244.2	0.00	0.00	0.00
2,700.0	10.09	63.68	2,678.3	110.6	258.5	-260.0	0.00	0.00	0.00
2,800.0	10.09	63.68	2,776.8	118.4	274.2	-275.8	0.00	0.00	0.00
2,900.0	10.09	63.68	2,875.2	126.1	289.9	-291.6	0.00	0.00	0.00
3,000.0	10.09	63.68	2,973.7	133.9	305.6	-307.4	0.00	0.00	0.00
3,100.0	10.09	63.68	3,072.2	141.7	321.3	-323.2	0.00	0.00	0.00
3,200.0	10.09	63.68	3,170.6	149.4	337.0	-339.0	0.00	0.00	0.00
3,300.0	10.09	63.68	3,269.1	157.2	352.7	-354.8	0.00	0.00	0.00
3,400.0	10.09	63.68	3,367.5	165.0	368.4	-370.6	0.00	0.00	0.00
3,500.0	10.09	63.68	3,466.0	172.7	384.2	-386.5	0.00	0.00	0.00
3,600.0	10.09	63.68	3,564.4	180.5	399.9	-402.3	0.00	0.00	0.00
3,700.0	10.09	63.68	3,662.9	188.3	415.6	-418.1	0.00	0.00	0.00
3,735.7	10.09	63.68	3,698.0	191.0	421.2	-423.7	0.00	0.00	0.00
3,800.0	8.81	63.68	3,761.4	195.7	430.6	-433.2	2.00	-2.00	0.00
3,900.0	6.81	63.68	3,860.5	201.8	442.8	-445.5	2.00	-2.00	0.00
4,000.0	4.81	63.68	3,960.0	206.2	451.9	-454.6	2.00	-2.00	0.00
4,100.0	2.81	63.68	4,059.8	209.2	457.8	-460.6	2.00	-2.00	0.00
4,200.0	0.81	63.68	4,159.7	210.6	460.6	-463.5	2.00	-2.00	0.00
4,240.3	0.00	0.00	4,200.0	210.7	460.9	-463.7	2.00	-2.00	0.00
4,300.0	0.00	0.00	4,259.7	210.7	460.9	-463.7	0.00	0.00	0.00
4,400.0	0.00	0.00	4,359.7	210.7	460.9	-463.7	0.00	0.00	0.00

Database:	US_EDM	Local Co-ordinate Reference:	Well Ward V-20-19HN
Company:	Bayswater Exploration & Production, LLC	TVD Reference:	WELL @ 4750.0ft (RKB - 23')
Project:	SEC.20-T6N-R66W	MD Reference:	WELL @ 4750.0ft (RKB - 23')
Site:	Ward 20-M Pad Sec. 20-T6N-R66W	North Reference:	True
Well:	Ward V-20-19HN	Survey Calculation Method:	Minimum Curvature
Wellbore:	Wellbore #1		
Design:	Plan #2 (6-14-16)		

Planned Survey									
Measured Depth (ft)	Inclination (°)	Azimuth (°)	Vertical Depth (ft)	+N/-S (ft)	+E/-W (ft)	Vertical Section (ft)	Dogleg Rate (°/100usft)	Build Rate (°/100usft)	Turn Rate (°/100usft)
4,500.0	0.00	0.00	4,459.7	210.7	460.9	-463.7	0.00	0.00	0.00
4,600.0	0.00	0.00	4,559.7	210.7	460.9	-463.7	0.00	0.00	0.00
4,700.0	0.00	0.00	4,659.7	210.7	460.9	-463.7	0.00	0.00	0.00
4,800.0	0.00	0.00	4,759.7	210.7	460.9	-463.7	0.00	0.00	0.00
4,900.0	0.00	0.00	4,859.7	210.7	460.9	-463.7	0.00	0.00	0.00
5,000.0	0.00	0.00	4,959.7	210.7	460.9	-463.7	0.00	0.00	0.00
5,100.0	0.00	0.00	5,059.7	210.7	460.9	-463.7	0.00	0.00	0.00
5,200.0	0.00	0.00	5,159.7	210.7	460.9	-463.7	0.00	0.00	0.00
5,300.0	0.00	0.00	5,259.7	210.7	460.9	-463.7	0.00	0.00	0.00
5,400.0	0.00	0.00	5,359.7	210.7	460.9	-463.7	0.00	0.00	0.00
5,500.0	0.00	0.00	5,459.7	210.7	460.9	-463.7	0.00	0.00	0.00
5,600.0	0.00	0.00	5,559.7	210.7	460.9	-463.7	0.00	0.00	0.00
5,700.0	0.00	0.00	5,659.7	210.7	460.9	-463.7	0.00	0.00	0.00
5,800.0	0.00	0.00	5,759.7	210.7	460.9	-463.7	0.00	0.00	0.00
5,900.0	0.00	0.00	5,859.7	210.7	460.9	-463.7	0.00	0.00	0.00
6,000.0	0.00	0.00	5,959.7	210.7	460.9	-463.7	0.00	0.00	0.00
6,100.0	0.00	0.00	6,059.7	210.7	460.9	-463.7	0.00	0.00	0.00
6,200.0	0.00	0.00	6,159.7	210.7	460.9	-463.7	0.00	0.00	0.00
6,300.0	0.00	0.00	6,259.7	210.7	460.9	-463.7	0.00	0.00	0.00
6,369.3	0.00	0.00	6,329.0	210.7	460.9	-463.7	0.00	0.00	0.00
6,400.0	2.46	268.16	6,359.7	210.7	460.2	-463.0	8.00	8.00	0.00
6,500.0	10.46	268.16	6,459.0	210.3	449.0	-451.8	8.00	8.00	0.00
6,600.0	18.46	268.16	6,555.7	209.5	424.1	-426.9	8.00	8.00	0.00
6,700.0	26.46	268.16	6,648.1	208.3	385.9	-388.7	8.00	8.00	0.00
6,800.0	34.47	268.16	6,734.2	206.7	335.3	-338.0	8.00	8.00	0.00
6,900.0	42.47	268.16	6,812.4	204.7	273.1	-275.9	8.00	8.00	0.00
7,000.0	50.47	268.16	6,881.3	202.3	200.7	-203.5	8.00	8.00	0.00
7,100.0	58.47	268.16	6,939.3	199.7	119.5	-122.2	8.00	8.00	0.00
7,200.0	66.47	268.16	6,985.5	196.9	30.9	-33.6	8.00	8.00	0.00
7,300.0	74.48	268.16	7,018.9	193.9	-63.2	60.6	8.00	8.00	0.00
7,400.0	82.48	268.16	7,038.8	190.7	-161.1	158.5	8.00	8.00	0.00
7,496.2	90.18	268.16	7,045.0	187.6	-257.0	254.4	8.00	8.00	0.00
7,496.3	90.18	268.16	7,045.0	187.6	-257.1	254.5	0.00	0.00	0.00
Start DLS 2.00 TFO 90.29									
7,500.0	90.18	268.23	7,045.0	187.5	-260.8	258.2	1.98	-0.01	1.98
7,525.4	90.18	268.74	7,044.9	186.8	-286.1	283.6	2.00	-0.01	2.00
7,600.0	90.18	268.74	7,044.7	185.2	-360.7	358.2	0.00	0.00	0.00
7,700.0	90.18	268.74	7,044.4	183.0	-460.7	458.2	0.00	0.00	0.00
7,800.0	90.18	268.74	7,044.1	180.8	-560.7	558.2	0.00	0.00	0.00
7,900.0	90.18	268.74	7,043.8	178.6	-660.7	658.2	0.00	0.00	0.00
8,000.0	90.18	268.74	7,043.4	176.4	-760.6	758.2	0.00	0.00	0.00
8,100.0	90.18	268.74	7,043.1	174.2	-860.6	858.2	0.00	0.00	0.00
8,200.0	90.18	268.74	7,042.8	172.0	-960.6	958.2	0.00	0.00	0.00
8,300.0	90.18	268.74	7,042.5	169.8	-1,060.6	1,058.2	0.00	0.00	0.00
8,400.0	90.18	268.74	7,042.2	167.6	-1,160.5	1,158.2	0.00	0.00	0.00
8,500.0	90.18	268.74	7,041.9	165.4	-1,260.5	1,258.2	0.00	0.00	0.00
8,600.0	90.18	268.74	7,041.6	163.2	-1,360.5	1,358.1	0.00	0.00	0.00
8,700.0	90.18	268.74	7,041.3	161.0	-1,460.5	1,458.1	0.00	0.00	0.00
8,800.0	90.18	268.74	7,041.0	158.8	-1,560.4	1,558.1	0.00	0.00	0.00
8,900.0	90.18	268.74	7,040.7	156.6	-1,660.4	1,658.1	0.00	0.00	0.00
9,000.0	90.18	268.74	7,040.4	154.4	-1,760.4	1,758.1	0.00	0.00	0.00
9,100.0	90.18	268.74	7,040.0	152.2	-1,860.4	1,858.1	0.00	0.00	0.00
9,200.0	90.18	268.74	7,039.7	150.0	-1,960.3	1,958.1	0.00	0.00	0.00
9,300.0	90.18	268.74	7,039.4	147.8	-2,060.3	2,058.1	0.00	0.00	0.00

Database:	US_EDM	Local Co-ordinate Reference:	Well Ward V-20-19HN
Company:	Bayswater Exploration & Production, LLC	TVD Reference:	WELL @ 4750.0ft (RKB - 23')
Project:	SEC.20-T6N-R66W	MD Reference:	WELL @ 4750.0ft (RKB - 23')
Site:	Ward 20-M Pad Sec. 20-T6N-R66W	North Reference:	True
Well:	Ward V-20-19HN	Survey Calculation Method:	Minimum Curvature
Wellbore:	Wellbore #1		
Design:	Plan #2 (6-14-16)		

Planned Survey									
Measured Depth (ft)	Inclination (°)	Azimuth (°)	Vertical Depth (ft)	+N/-S (ft)	+E/-W (ft)	Vertical Section (ft)	Dogleg Rate (°/100usft)	Build Rate (°/100usft)	Turn Rate (°/100usft)
9,400.0	90.18	268.74	7,039.1	145.6	-2,160.3	2,158.1	0.00	0.00	0.00
9,500.0	90.18	268.74	7,038.8	143.4	-2,260.3	2,258.1	0.00	0.00	0.00
9,600.0	90.18	268.74	7,038.5	141.2	-2,360.2	2,358.1	0.00	0.00	0.00
9,700.0	90.18	268.74	7,038.2	139.0	-2,460.2	2,458.1	0.00	0.00	0.00
9,800.0	90.18	268.74	7,037.9	136.8	-2,560.2	2,558.1	0.00	0.00	0.00
9,900.0	90.18	268.74	7,037.6	134.6	-2,660.2	2,658.1	0.00	0.00	0.00
10,000.0	90.18	268.74	7,037.3	132.4	-2,760.1	2,758.1	0.00	0.00	0.00
10,100.0	90.18	268.74	7,037.0	130.2	-2,860.1	2,858.1	0.00	0.00	0.00
10,200.0	90.18	268.74	7,036.6	128.0	-2,960.1	2,958.1	0.00	0.00	0.00
10,300.0	90.18	268.74	7,036.3	125.8	-3,060.1	3,058.1	0.00	0.00	0.00
10,400.0	90.18	268.74	7,036.0	123.6	-3,160.0	3,158.1	0.00	0.00	0.00
10,500.0	90.18	268.74	7,035.7	121.4	-3,260.0	3,258.1	0.00	0.00	0.00
10,600.0	90.18	268.74	7,035.4	119.2	-3,360.0	3,358.1	0.00	0.00	0.00
10,700.0	90.18	268.74	7,035.1	117.0	-3,460.0	3,458.1	0.00	0.00	0.00
10,800.0	90.18	268.74	7,034.8	114.8	-3,559.9	3,558.1	0.00	0.00	0.00
10,900.0	90.18	268.74	7,034.5	112.6	-3,659.9	3,658.1	0.00	0.00	0.00
11,000.0	90.18	268.74	7,034.2	110.4	-3,759.9	3,758.1	0.00	0.00	0.00
11,100.0	90.18	268.74	7,033.9	108.2	-3,859.9	3,858.0	0.00	0.00	0.00
11,200.0	90.18	268.74	7,033.6	106.0	-3,959.8	3,958.0	0.00	0.00	0.00
11,300.0	90.18	268.74	7,033.2	103.8	-4,059.8	4,058.0	0.00	0.00	0.00
11,400.0	90.18	268.74	7,032.9	101.6	-4,159.8	4,158.0	0.00	0.00	0.00
11,500.0	90.18	268.74	7,032.6	99.4	-4,259.8	4,258.0	0.00	0.00	0.00
11,600.0	90.18	268.74	7,032.3	97.2	-4,359.7	4,358.0	0.00	0.00	0.00
11,700.0	90.18	268.74	7,032.0	95.0	-4,459.7	4,458.0	0.00	0.00	0.00
11,800.0	90.18	268.74	7,031.7	92.8	-4,559.7	4,558.0	0.00	0.00	0.00
11,900.0	90.18	268.74	7,031.4	90.6	-4,659.7	4,658.0	0.00	0.00	0.00
12,000.0	90.18	268.74	7,031.1	88.4	-4,759.6	4,758.0	0.00	0.00	0.00
12,100.0	90.18	268.74	7,030.8	86.2	-4,859.6	4,858.0	0.00	0.00	0.00
12,200.0	90.18	268.74	7,030.5	84.0	-4,959.6	4,958.0	0.00	0.00	0.00
12,300.0	90.18	268.74	7,030.2	81.8	-5,059.6	5,058.0	0.00	0.00	0.00
12,351.2	90.18	268.74	7,030.0	80.7	-5,110.8	5,109.2	0.00	0.00	0.00
Start DLS 2.00 TFO -83.44									
12,368.0	90.22	268.41	7,029.9	80.3	-5,127.5	5,126.0	2.00	0.23	-1.98
12,400.0	90.22	268.41	7,029.8	79.4	-5,159.5	5,158.0	0.00	0.00	0.00
12,500.0	90.22	268.41	7,029.4	76.6	-5,259.5	5,258.0	0.00	0.00	0.00
12,600.0	90.22	268.41	7,029.1	73.8	-5,359.5	5,358.0	0.00	0.00	0.00
12,700.0	90.22	268.41	7,028.7	71.0	-5,459.4	5,458.0	0.00	0.00	0.00
12,800.0	90.22	268.41	7,028.3	68.3	-5,559.4	5,557.9	0.00	0.00	0.00
12,900.0	90.22	268.41	7,027.9	65.5	-5,659.3	5,657.9	0.00	0.00	0.00
13,000.0	90.22	268.41	7,027.6	62.7	-5,759.3	5,757.9	0.00	0.00	0.00
13,100.0	90.22	268.41	7,027.2	59.9	-5,859.3	5,857.9	0.00	0.00	0.00
13,200.0	90.22	268.41	7,026.8	57.1	-5,959.2	5,957.9	0.00	0.00	0.00
13,300.0	90.22	268.41	7,026.4	54.4	-6,059.2	6,057.9	0.00	0.00	0.00
13,400.0	90.22	268.41	7,026.1	51.6	-6,159.1	6,157.9	0.00	0.00	0.00
13,500.0	90.22	268.41	7,025.7	48.8	-6,259.1	6,257.9	0.00	0.00	0.00
13,600.0	90.22	268.41	7,025.3	46.0	-6,359.1	6,357.9	0.00	0.00	0.00
13,700.0	90.22	268.41	7,024.9	43.2	-6,459.0	6,457.8	0.00	0.00	0.00
13,800.0	90.22	268.41	7,024.6	40.5	-6,559.0	6,557.8	0.00	0.00	0.00
13,900.0	90.22	268.41	7,024.2	37.7	-6,658.9	6,657.8	0.00	0.00	0.00
14,000.0	90.22	268.41	7,023.8	34.9	-6,758.9	6,757.8	0.00	0.00	0.00
14,100.0	90.22	268.41	7,023.4	32.1	-6,858.9	6,857.8	0.00	0.00	0.00
14,200.0	90.22	268.41	7,023.1	29.3	-6,958.8	6,957.8	0.00	0.00	0.00
14,300.0	90.22	268.41	7,022.7	26.6	-7,058.8	7,057.8	0.00	0.00	0.00

Database:	US_EDM	Local Co-ordinate Reference:	Well Ward V-20-19HN
Company:	Bayswater Exploration & Production, LLC	TVD Reference:	WELL @ 4750.0ft (RKB - 23')
Project:	SEC.20-T6N-R66W	MD Reference:	WELL @ 4750.0ft (RKB - 23')
Site:	Ward 20-M Pad Sec. 20-T6N-R66W	North Reference:	True
Well:	Ward V-20-19HN	Survey Calculation Method:	Minimum Curvature
Wellbore:	Wellbore #1		
Design:	Plan #2 (6-14-16)		

Planned Survey										
Measured Depth (ft)	Inclination (°)	Azimuth (°)	Vertical Depth (ft)	+N/-S (ft)	+E/-W (ft)	Vertical Section (ft)	Dogleg Rate (°/100usft)	Build Rate (°/100usft)	Turn Rate (°/100usft)	
14,400.0	90.22	268.41	7,022.3	23.8	-7,158.7	7,157.8	0.00	0.00	0.00	
14,500.0	90.22	268.41	7,021.9	21.0	-7,258.7	7,257.8	0.00	0.00	0.00	
14,600.0	90.22	268.41	7,021.6	18.2	-7,358.7	7,357.8	0.00	0.00	0.00	
14,700.0	90.22	268.41	7,021.2	15.4	-7,458.6	7,457.7	0.00	0.00	0.00	
14,800.0	90.22	268.41	7,020.8	12.7	-7,558.6	7,557.7	0.00	0.00	0.00	
14,900.0	90.22	268.41	7,020.4	9.9	-7,658.6	7,657.7	0.00	0.00	0.00	
15,000.0	90.22	268.41	7,020.1	7.1	-7,758.5	7,757.7	0.00	0.00	0.00	
15,014.8	90.22	268.41	7,020.0	6.7	-7,773.3	7,772.5	0.00	0.00	0.00	
Start DLS 2.00 TFO -82.35										
15,093.9	90.43	266.84	7,019.6	3.4	-7,852.3	7,851.5	2.00	0.27	-1.98	
15,100.0	90.43	266.84	7,019.5	3.1	-7,858.4	7,857.7	0.00	0.00	0.00	
15,200.0	90.43	266.84	7,018.8	-2.4	-7,958.3	7,957.6	0.00	0.00	0.00	
15,300.0	90.43	266.84	7,018.0	-7.9	-8,058.1	8,057.5	0.00	0.00	0.00	
15,400.0	90.43	266.84	7,017.3	-13.5	-8,158.0	8,157.4	0.00	0.00	0.00	
15,500.0	90.43	266.84	7,016.5	-19.0	-8,257.8	8,257.3	0.00	0.00	0.00	
15,600.0	90.43	266.84	7,015.8	-24.5	-8,357.7	8,357.2	0.00	0.00	0.00	
15,700.0	90.43	266.84	7,015.1	-30.0	-8,457.5	8,457.1	0.00	0.00	0.00	
15,800.0	90.43	266.84	7,014.3	-35.5	-8,557.3	8,557.0	0.00	0.00	0.00	
15,900.0	90.43	266.84	7,013.6	-41.0	-8,657.2	8,657.0	0.00	0.00	0.00	
16,000.0	90.43	266.84	7,012.8	-46.5	-8,757.0	8,756.9	0.00	0.00	0.00	
16,100.0	90.43	266.84	7,012.1	-52.0	-8,856.9	8,856.8	0.00	0.00	0.00	
16,200.0	90.43	266.84	7,011.3	-57.5	-8,956.7	8,956.7	0.00	0.00	0.00	
16,300.0	90.43	266.84	7,010.6	-63.1	-9,056.6	9,056.6	0.00	0.00	0.00	
16,400.0	90.43	266.84	7,009.9	-68.6	-9,156.4	9,156.5	0.00	0.00	0.00	
16,500.0	90.43	266.84	7,009.1	-74.1	-9,256.3	9,256.4	0.00	0.00	0.00	
16,600.0	90.43	266.84	7,008.4	-79.6	-9,356.1	9,356.3	0.00	0.00	0.00	
16,700.0	90.43	266.84	7,007.6	-85.1	-9,455.9	9,456.2	0.00	0.00	0.00	
16,800.0	90.43	266.84	7,006.9	-90.6	-9,555.8	9,556.1	0.00	0.00	0.00	
16,900.0	90.43	266.84	7,006.1	-96.1	-9,655.6	9,656.1	0.00	0.00	0.00	
17,000.0	90.43	266.84	7,005.4	-101.6	-9,755.5	9,756.0	0.00	0.00	0.00	
17,100.0	90.43	266.84	7,004.7	-107.1	-9,855.3	9,855.9	0.00	0.00	0.00	
17,200.0	90.43	266.84	7,003.9	-112.7	-9,955.2	9,955.8	0.00	0.00	0.00	
17,300.0	90.43	266.84	7,003.2	-118.2	-10,055.0	10,055.7	0.00	0.00	0.00	
17,400.0	90.43	266.84	7,002.4	-123.7	-10,154.9	10,155.6	0.00	0.00	0.00	
17,500.0	90.43	266.84	7,001.7	-129.2	-10,254.7	10,255.5	0.00	0.00	0.00	
17,600.0	90.43	266.84	7,000.9	-134.7	-10,354.6	10,355.4	0.00	0.00	0.00	
17,700.0	90.43	266.84	7,000.2	-140.2	-10,454.4	10,455.3	0.00	0.00	0.00	
17,726.4	90.43	266.84	7,000.0	-141.7	-10,480.7	10,481.7	0.00	0.00	0.00	
TD at 17726.4										

Database:	US_EDM	Local Co-ordinate Reference:	Well Ward V-20-19HN
Company:	Bayswater Exploration & Production, LLC	TVD Reference:	WELL @ 4750.0ft (RKB - 23')
Project:	SEC.20-T6N-R66W	MD Reference:	WELL @ 4750.0ft (RKB - 23')
Site:	Ward 20-M Pad Sec. 20-T6N-R66W	North Reference:	True
Well:	Ward V-20-19HN	Survey Calculation Method:	Minimum Curvature
Wellbore:	Wellbore #1		
Design:	Plan #2 (6-14-16)		

Design Targets									
Target Name - hit/miss target - Shape	Dip Angle (°)	Dip Dir. (°)	TVD (ft)	+N/-S (ft)	+E/-W (ft)	Northing (usft)	Easting (usft)	Latitude	Longitude
SHL 289'FSL, 213'FEL, : - plan hits target center - Point	0.00	0.00	1.0	0.0	0.0	1,413,822.25	3,196,666.17	40.467192	-104.793156
BHL 471'FSL, 470'FWL, - plan hits target center - Point	0.00	0.00	7,000.0	-141.7	-10,480.7	1,413,597.04	3,186,187.32	40.466797	-104.830823
Boreline Vertex 476'FSL - plan hits target center - Point	0.00	0.00	7,020.0	6.7	-7,773.3	1,413,766.98	3,188,893.34	40.467207	-104.821093
Boreline Vertex 478'FSL - plan hits target center - Point	0.00	0.00	7,030.0	80.7	-5,110.8	1,413,862.19	3,191,555.10	40.467412	-104.811524
LPL 480'FSL, 470'FEL, : - plan hits target center - Point	0.00	0.00	7,045.0	187.6	-257.1	1,414,007.80	3,196,407.60	40.467707	-104.794080

Casing Points					
Measured Depth (ft)	Vertical Depth (ft)	Name	Casing Diameter (")	Hole Diameter (")	
7,496.3	7,045.0	7"	7	8-3/4	

Plan Annotations				
Measured Depth (ft)	Vertical Depth (ft)	Local Coordinates		Comment
		+N/-S (ft)	+E/-W (ft)	
200.0	200.0	0.0	0.0	KOP - Start Build 1.00
1,000.4	1,000.0	0.0	0.0	Start DLS 1.50 TFO -32.56
7,496.3	7,045.0	0.0	3.7	Start DLS 2.00 TFO 90.29
12,351.2	7,030.0	0.0	25.0	Start DLS 2.00 TFO -83.44
15,014.8	7,020.0	21.5	78.5	Start DLS 2.00 TFO -82.35
17,726.4	7,000.0	191.0	421.2	TD at 17726.4