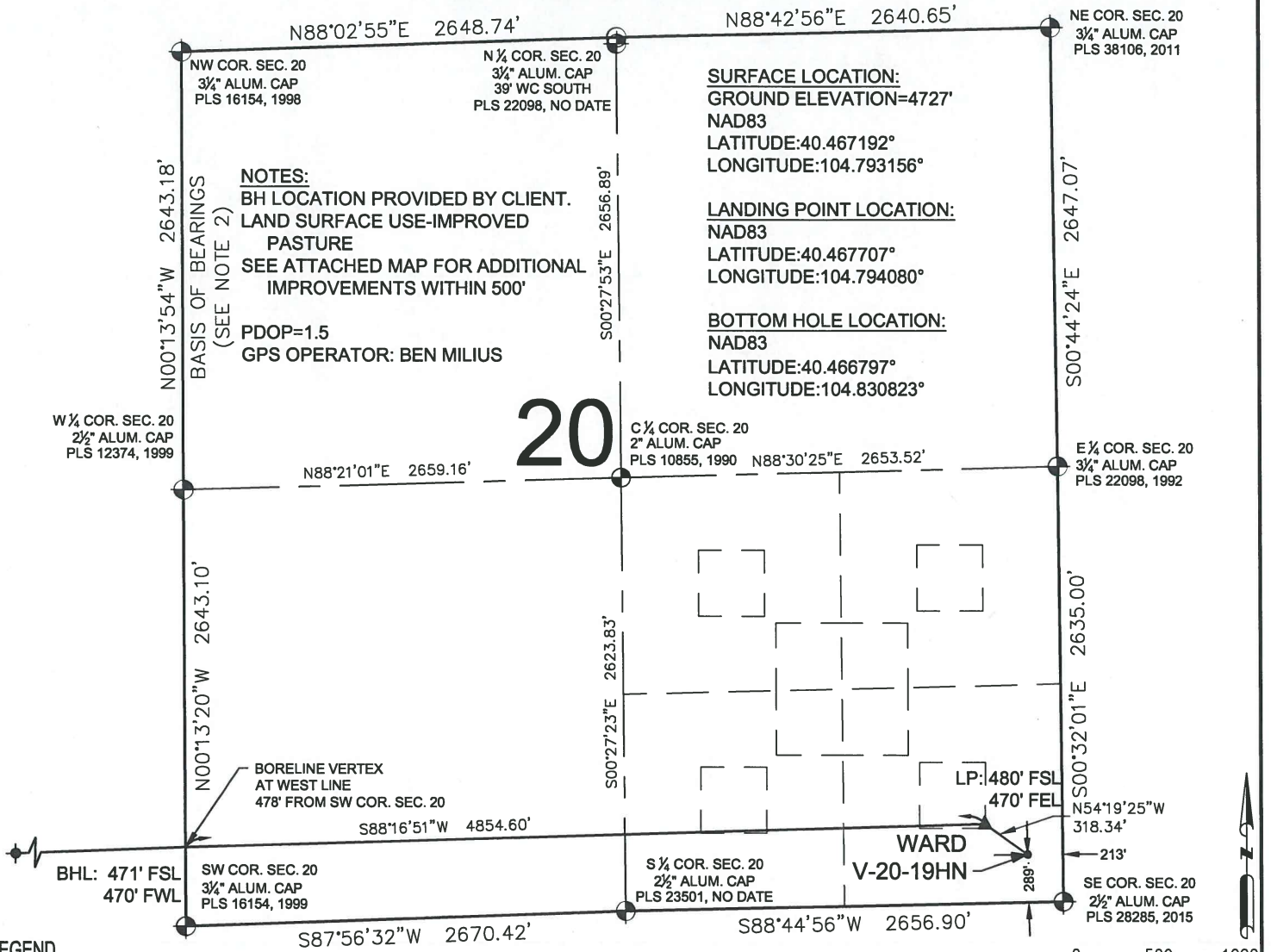


WARD V-20-19HN WELL LOCATION CERTIFICATE



LEGEND

- ⊕ = EXISTING MONUMENT
- = CALCULATED POSITION
- = PROPOSED WELL
- ◆ = EXISTING WELL
- ⬮ = BOTTOM HOLE
- ▲ = LANDING POINT
- LP = LANDING POINT
- BHL = BOTTOM HOLE

WELL WARD V-20-19HN TO BE LOCATED 289' FSL & 213' FEL

NOTES:

- THIS FIELD SURVEY CONFORMS TO THE MINIMUM STANDARDS SET BY THE C.O.G.C.C., RULE NO. 215
- BEARINGS ARE BASED ON THE ASSUMPTION THAT THE WEST LINE OF THE NORTHWEST QUARTER OF SECTION 20, BEARS N00°13'54"W BETWEEN THE MONUMENTS SHOWN HEREON.
- GRID DISTANCES ARE SHOWN, AS GPS MEASURED IN THE FIELD, WITH TIES TO WELLS MEASURED PERPENDICULAR TO SECTION LINES. TO GET GROUND DISTANCES MULTIPLY THE SHOWN DISTANCE BY 1.000257471.
- ELEVATIONS SHOWN ARE NAVD 88, AS DERIVED BY GPS OBSERVATIONS.
- SECTION MONUMENTS RECOVERED ON 8/19/14, 6/9/15, AND 7/8/15. WELLS STAKED ON 7/8/15. REVISED WELL LOCATION STAKED ON 10/19/15.

I, JACOB S. FRISCH, A LICENSED PROFESSIONAL LAND SURVEYOR IN THE STATE OF COLORADO DO HEREBY CERTIFY TO **BAYSWATER EXPLORATION & PRODUCTION, LLC**, THAT THE SURVEY AND WELL LOCATION CERTIFICATE SHOWN HEREON WERE DONE BY ME OR UNDER MY DIRECT SUPERVISION AND THAT THE DRAWING SHOWN HEREON ACCURATELY DEPICTS THE PROPOSED LOCATION OF THE WELL. THIS CERTIFICATE DOES NOT REPRESENT A LAND SURVEY PLAT OR IMPROVEMENT SURVEY PLAT AS DEFINED BY C.R.S. 38-51-102 AND CANNOT BE RELIED UPON TO DETERMINE OWNERSHIP.



JACOB S. FRISCH, PLS 38149
DATE: 02-16-16
JOB NO: B14.BEP.010
FOR AND ON BEHALF OF P.F.S., LLC

SHEET 1 OF 2

PREPARED BY:



FIELD DATE:
10-19-15

DRAWING DATE:
02-15-16

BY:
KAD

CHECKED BY:
JLW

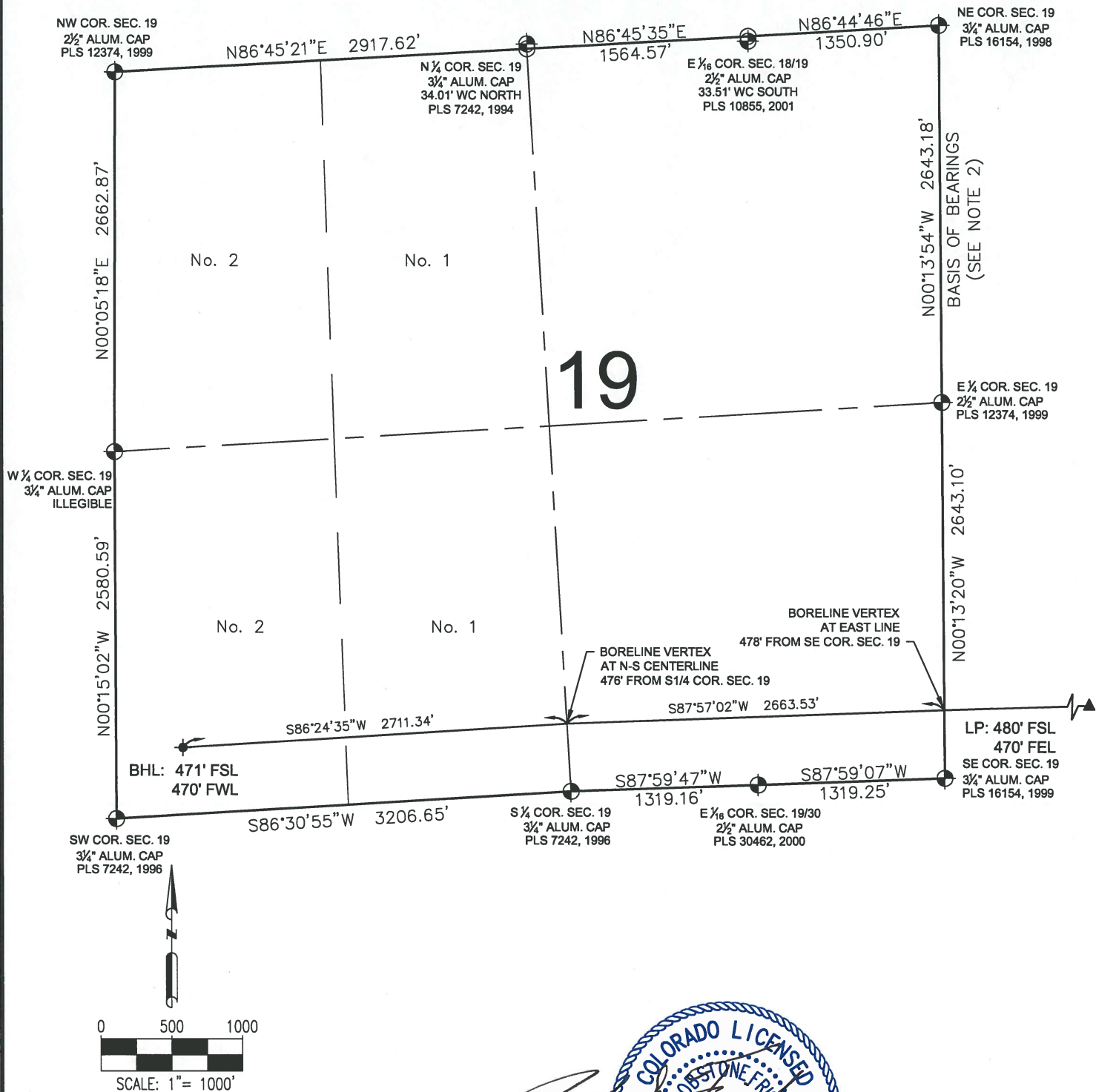
WELL NAME:
WARD V-20-19HN

SURFACE LOCATION:
SE1/4 SE1/4 SEC. 20, T6N, R66W, 6TH P.M.
WELD COUNTY, COLORADO

PREPARED FOR:



WARD V-20-19HN WELL LOCATION CERTIFICATE



LEGEND

- ⊕ = EXISTING MONUMENT ♦ = BOTTOM HOLE
- = CALCULATED POSITION ▲ = LANDING POINT
- = PROPOSED WELL LP = LANDING POINT
- ◆ = EXISTING WELL BHL = BOTTOM HOLE

JACOB S. FRISCH, PLS 38149
 DATE: 02-16-16
 JOB NO: B14.BEP.0202
 FOR AND ON BEHALF OF P.F.S., LLC



SHEET 2 OF 2

PREPARED BY:



FIELD DATE:
10-19-15

DRAWING DATE:
02-15-16

BY:
KAD

CHECKED BY:
JLW

WELL NAME:

WARD V-20-19HN

SURFACE LOCATION:

SE1/4 SE1/4 SEC. 20, T6N, R66W, 6TH P.M.
 WELD COUNTY, COLORADO

PREPARED FOR:

