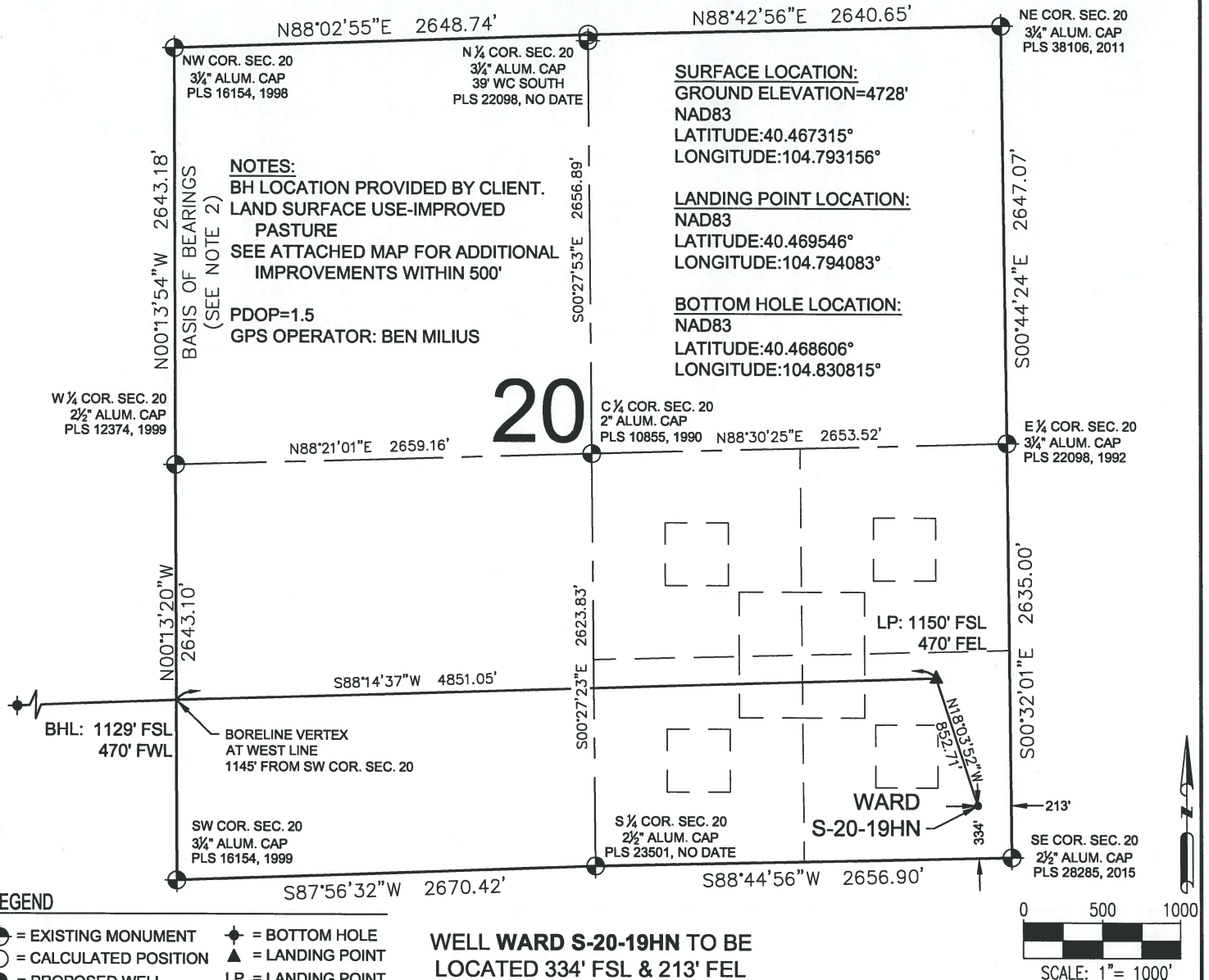
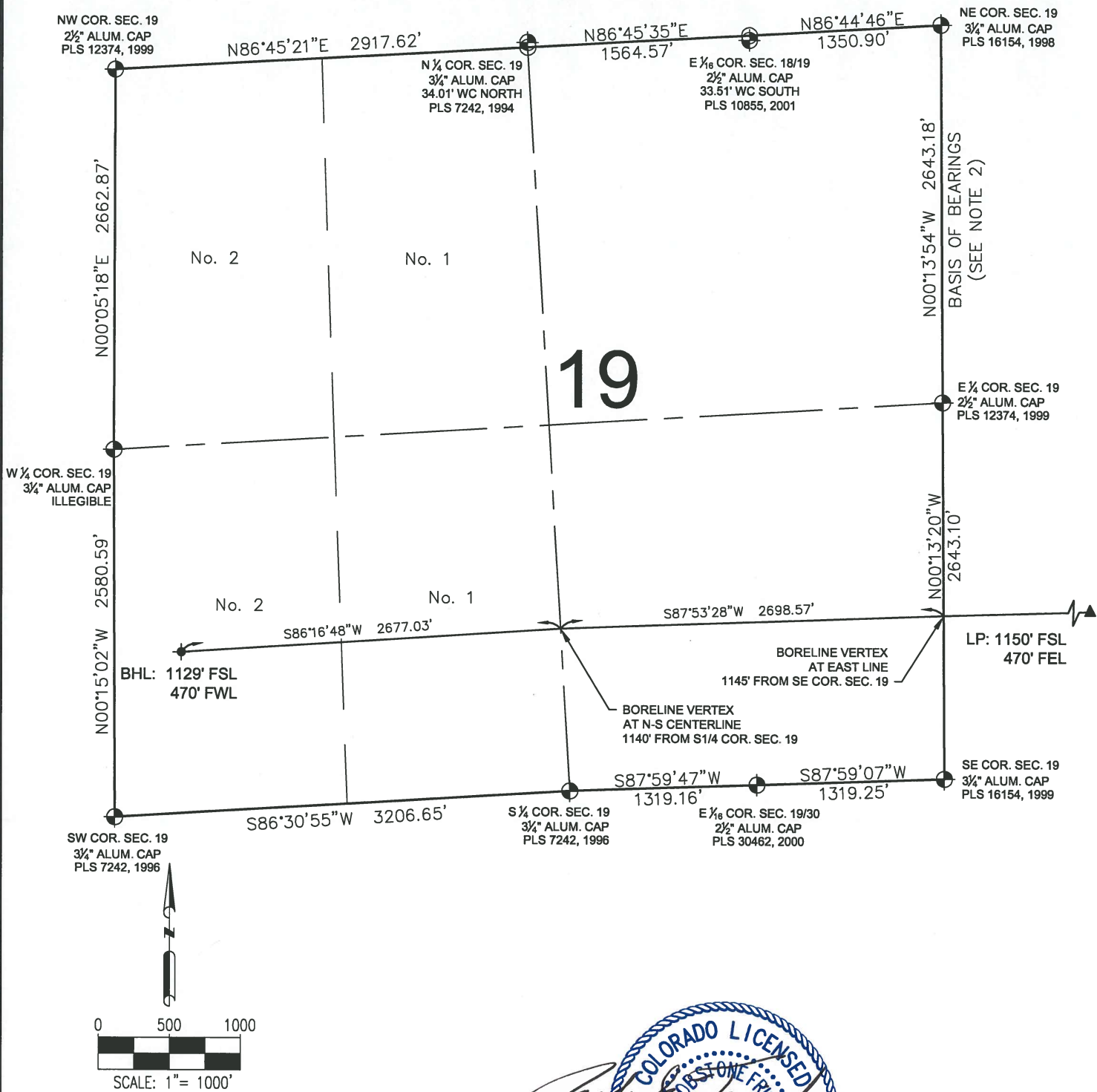








# WARD S-20-19HN WELL LOCATION CERTIFICATE



**WARD S-20-19HN**  
**WELL LOCATION CERTIFICATE**



## LEGEND

-  = EXISTING MONUMENT  
 = CALCULATED POSITION  
 = PROPOSED WELL  
 = EXISTING WELL  
 = BOTTOM HOLE  
 = LANDING POINT  
LP = LANDING POINT  
BHL = BOTTOM HOLE

JACOB S. FRISCH, P.E. 381  
DATE: 02-16-16  
JOB NO: B14.BEP.002  
FOR AND ON BEHALF OF P.F.S., LLC

**SHEET 2 OF 2**

PREPARED BY:



**Petroleum Field Services, LLC**  
7535 Hilltop Circle  
Denver, CO 80221

FIELD DATE:  
10-19-15

DRAWING DATE:  
02-15-16

BY:  
KAD

CHECKED BY:  
JLW

WELL NAME:

WARD S-20-19HN

SURFACE LOCATION:

SE1/4 SE1/4 SEC. 20, T6N, R66W, 6TH P.M.  
WELD COUNTY, COLORADO

PREPARED FOR:



**BAYSWATER**  
EXPLORATION AND PRODUCTION, LLC