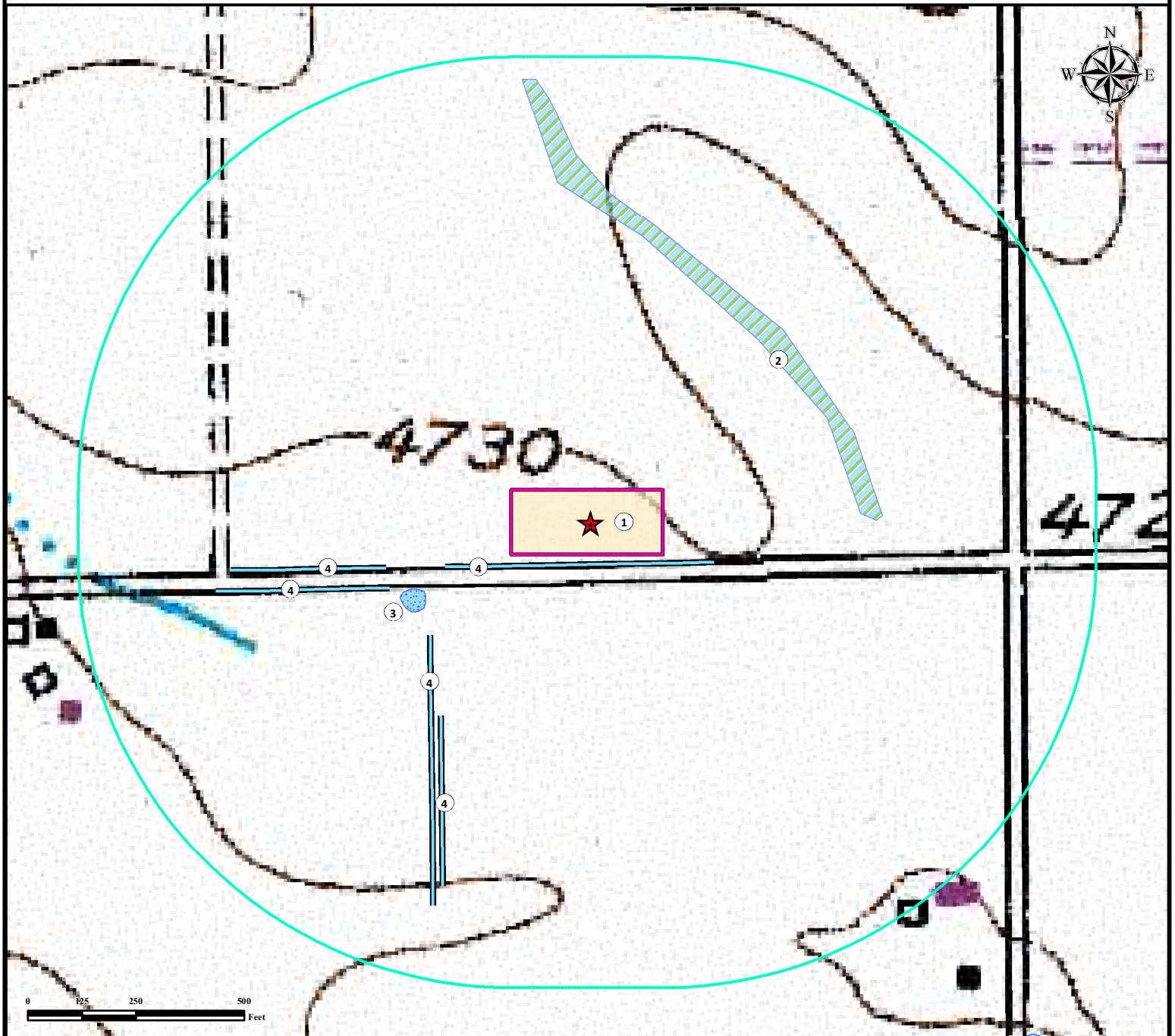


# WARD 20-M FACILITY HYDROLOGY MAP



## Measured from Nearest Edge of Disturbance

1. Proposed Ward 20-M Facility.
2. Wetland is  $\pm 395'$  NE.
3. Pond is  $\pm 218'$  SW.
4. Ditches are  $\pm 20'$  S,  $\pm 291'$  SW,  $\pm 291'$  SW,  $\pm 263'$  SW, and  $\pm 406'$  SW.

## Legend

— Ditch

- Disturbance Area
- Proposed Facility
- Wetland
- Pond
- 1000' Radius

DISCLAIMER:  
THIS PLOT DOES NOT REPRESENT A MONUMENTED LAND SURVEY AND SHOULD NOT BE RELIED UPON TO DETERMINE BOUNDARY LINES, PROPERTY OWNERSHIP OR OTHER PROPERTY INTERESTS. PARCEL LINES, IF DEPICTED HAVE NOT BEEN FIELD VERIFIED AND MAY BE BASED UPON PUBLICLY AVAILABLE DATA THAT ALSO HAS NOT BEEN INDEPENDENTLY VERIFIED.

DATA SOURCE:  
TOPO MAP: USGS  
NHD: USGS

PUBLICLY AVAILABLE DATA SOURCES HAVE NOT BEEN INDEPENDENTLY VERIFIED BY PFS.



**117' FSL 969' FEL**  
**LAT: 40.466691°**  
**LONG: -104.795872° (NAD 83)**



FIELD DATE:  
06-10-16

DRAWING DATE:  
06-13-16

BY:  
CSG

CHECKED BY:  
KAD

SITE NAME:  
WARD 20-M FACILITY

SURFACE LOCATION:  
SE1/4 SE1/4 SEC. 20, T6N, R66W, 6TH P.M.  
WELD COUNTY, COLORADO

PREPARED FOR:

