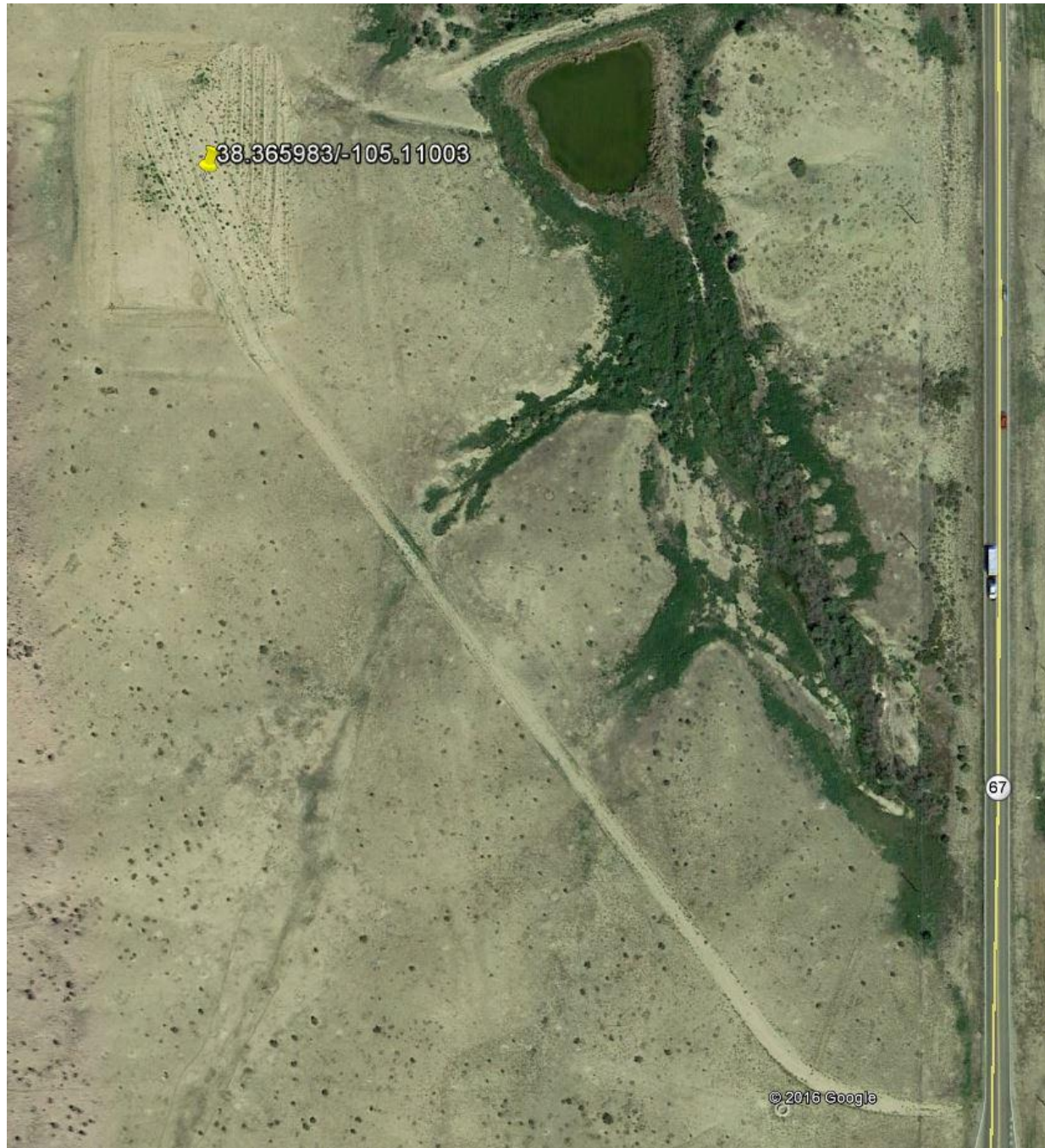


432126 Pit Inspection Photos



An approximately 200' by 300' location and access road appear to have been constructed. Image from Google Earth.



Looking south from north side of location. A 3 foot high berm has been constructed on east side of location.



Invasive weeds on location.



Invasive weeds on location.



Example of native vegetation surrounding location.



Bare soil and weeds on location.



Berms run throughout the location.



Berms on location.



Access road on south side of location. Two track road runs toward water tower in distance.



Access road tire tracks.

