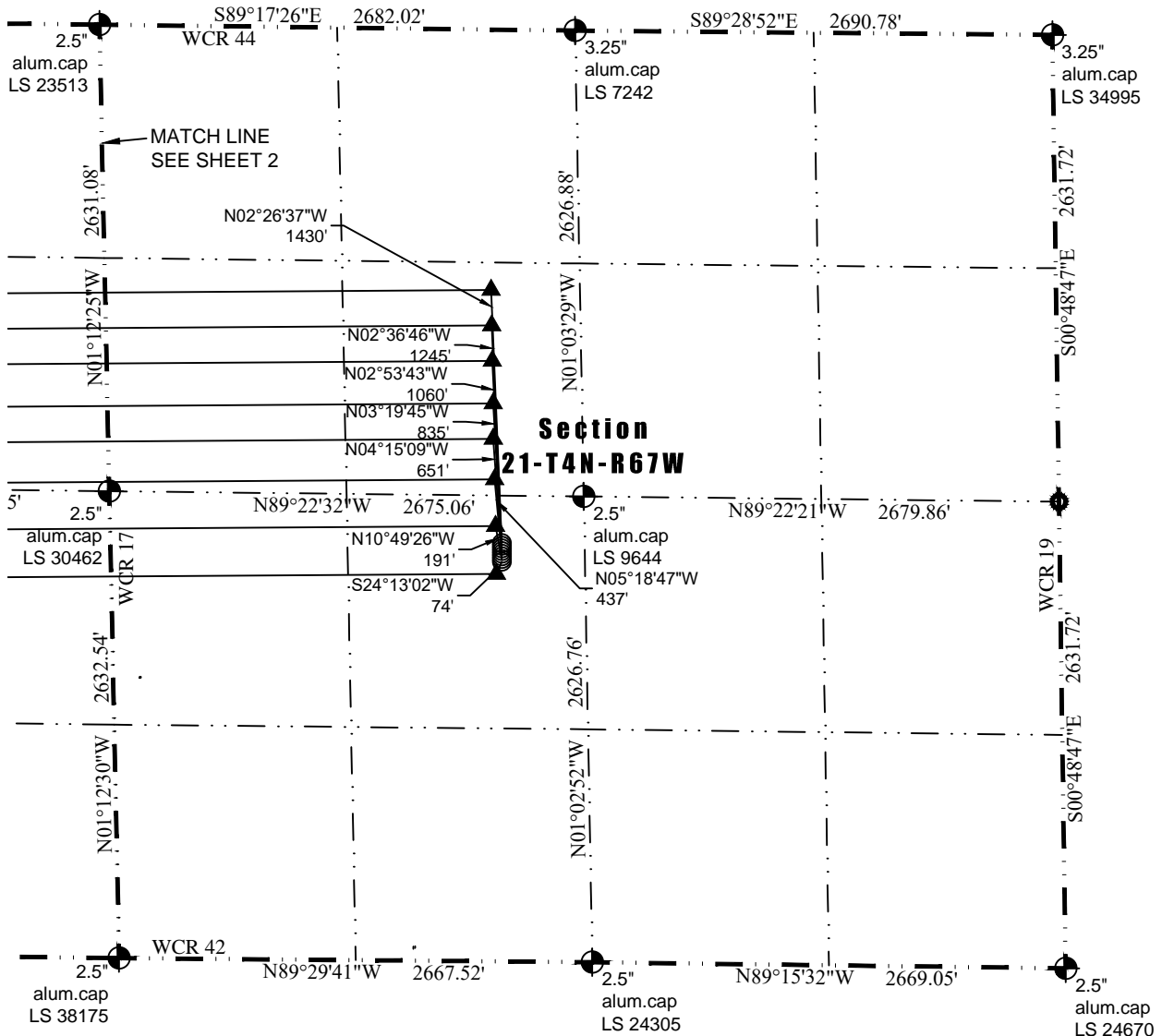




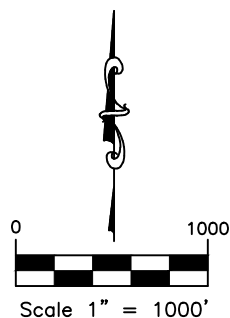
Washburn Land Surveying
www.WashburnSurveying.com
970-232-9645

MULI-WELL PLAN SHARON 4N67W210 PAD

SECTION: 21
TOWNSHIP: 4N
RANGE: 67W
6TH P.M.
WELD COUNTY, CO



- LEGEND:**
- ALIQUOT CORNER AS DESCRIBED
 - SURFACE HOLE LOCATION (SHL)
 - ▲ ENTRY POINT (EP)
 - BOTTOM HOLE LOCATION (BHL)



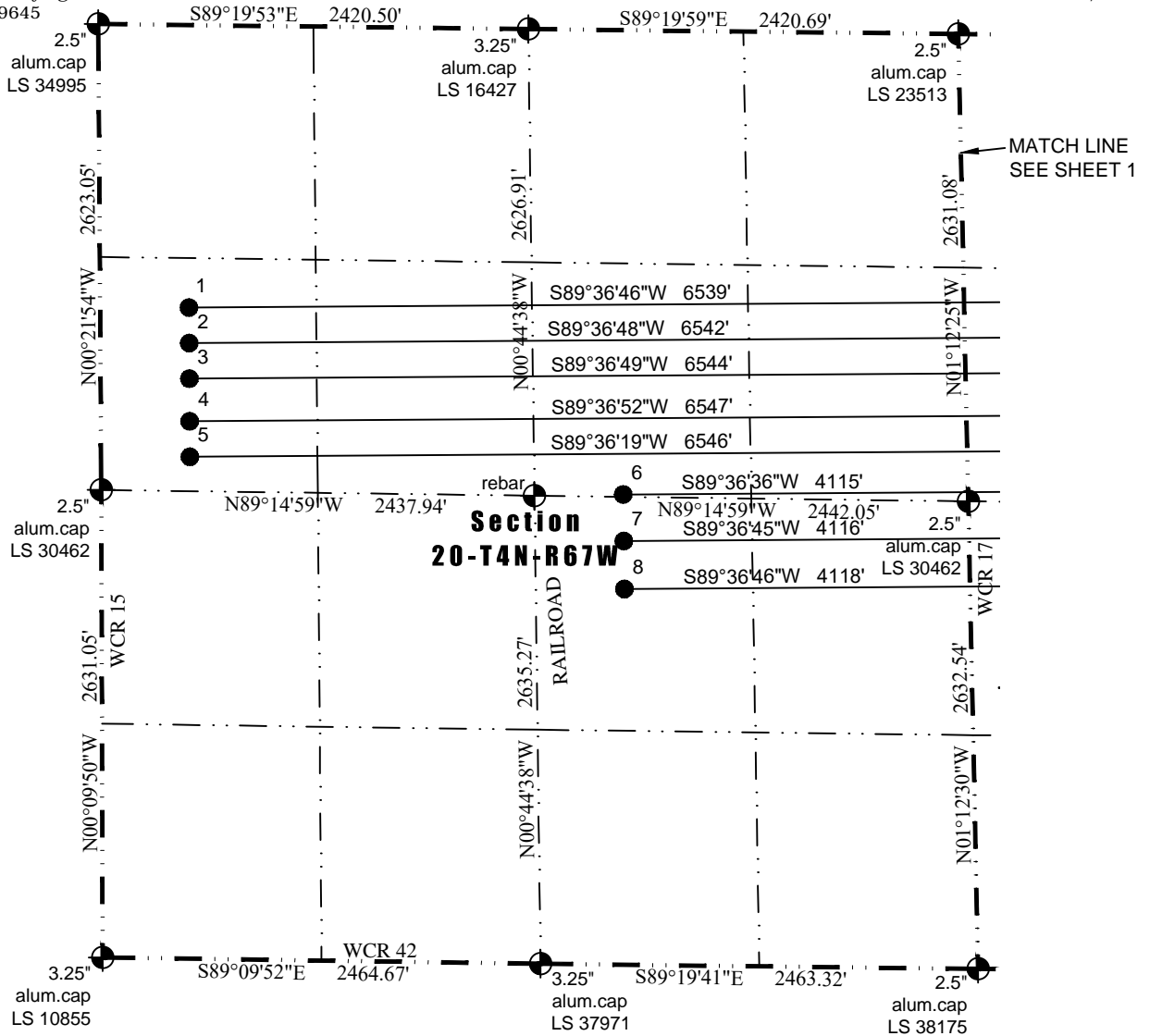
DATE: 6/20/2016 SHEET 1 OF 3



Washburn Land Surveying
www.WashburnSurveying.com
970-232-9645

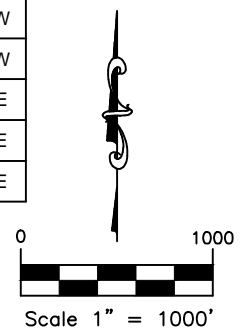
MULI-WELL PLAN SHARON 4N67W210 PAD

SECTION: 21
TOWNSHIP: 4N
RANGE: 67W
6TH P.M.
WELD COUNTY, CO



#	WELL NAME	BHL FOOTAGES				BHL LAT	BHL LONG	BHL S-T-R	BHL ¼ ¼
1	SHARON 21N-334	1590	FNL	500	FWL	N40.301501°	W104.921227°	20-4-67	SWNW
2	SHARON 21N-234	1790	FNL	500	FWL	N40.300952°	W104.921227°	20-4-67	SWNW
3	SHARON 21O-314	1990	FNL	500	FWL	N40.300403°	W104.921227°	20-4-67	SWNW
4	SHARON 21O-214	2230	FNL	500	FWL	N40.299744°	W104.921227°	20-4-67	SWNW
5	SHARON 21O-304	2430	FNL	500	FWL	N40.299195°	W104.921227°	20-4-67	SWNW
6	SHARON 21O-204	2614	FNL	1941	FEL	N40.298569°	W104.912489°	20-4-67	SWNE
7	SHARON 21O-334	2385	FSL	1943	FEL	N40.297850°	W104.912483°	20-4-67	NWSE
8	SHARON 21O-234	2115	FSL	1945	FEL	N40.297108°	W104.912477°	20-4-67	NWSE

- LEGEND:**
- ALIQUOT CORNER AS DESCRIBED
 - SURFACE HOLE LOCATION (SHL)
 - ENTRY POINT (EP)
 - BOTTOM HOLE LOCATION (BHL)



DATE: 6/20/2016 SHEET 2 OF 3



Washburn Land Surveying
www.WashburnSurveying.com
970-232-9645

MULI-WELL PLAN SHARON 4N67W210 PAD

SECTION: 21
TOWNSHIP: 4N
RANGE: 67W
6TH P.M.
WELD COUNTY, CO

