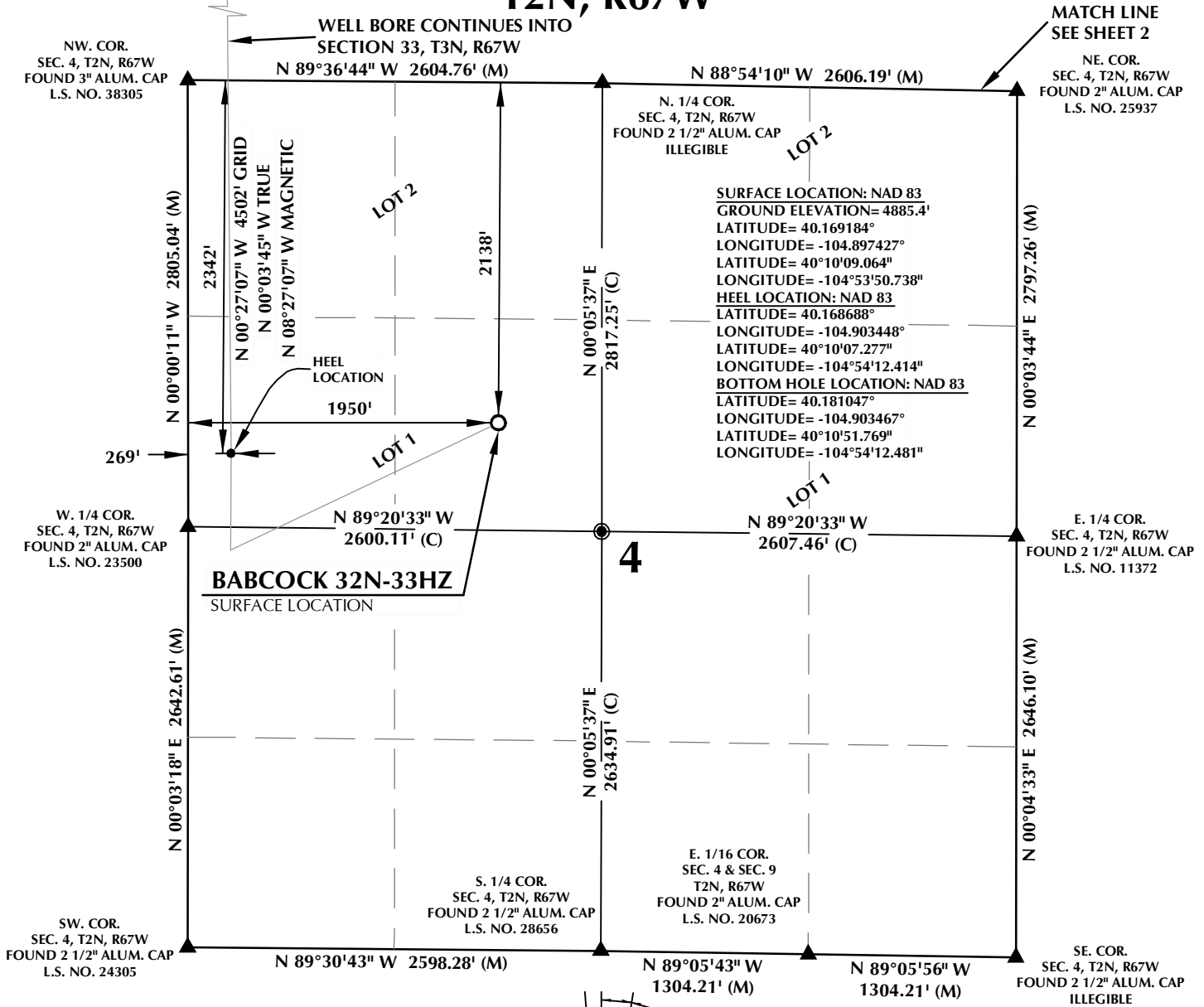


T2N, R67W

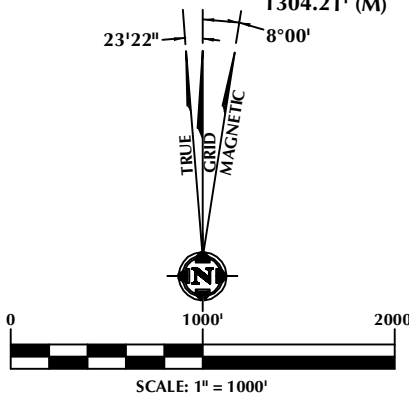


CERTIFICATE OF SURVEYOR:

THIS IS TO CERTIFY THAT THE ABOVE PLAT WAS PREPARED FROM FIELD NOTES OF ACTUAL SURVEY MADE BY ME OR UNDER MY SUPERVISION AND THAT THE SAME ARE TRUE AND CORRECT TO THE BEST OF MY KNOWLEDGE AND BELIEF. THIS CERTIFICATE DOES NOT REPRESENT A LAND SURVEY PLAT OR IMPROVEMENT SURVEY PLAT AS DEFINED BY C.R.S. 38-51-102 AND CANNOT BE RELIED UPON TO DETERMINE OWNERSHIP.

Randall K. French
RANDALL K. FRENCH
 PROFESSIONAL LAND SURVEYOR
 COLORADO REGISTRATION NUMBER 38512
 5/17/16

NOTICE:
 ACCORDING TO COLORADO STATE LAW YOU MUST COMMENCE ANY LEGAL ACTION BASED UPON ANY DEFECT IN THIS SURVEY WITHIN THREE YEARS AFTER YOU FIRST DISCOVER SUCH DEFECT. IN NO EVENT MAY ANY ACTION BASED UPON ANY DEFECT IN THIS SURVEY BE COMMENCED MORE THAN TEN YEARS FROM THE DATE ON THE CERTIFICATION SHOWN HEREON.



NOTE:
 MAGNETIC NORTH IS CURRENT AS OF 3/22/2016.
 MAGNETIC NORTH CHANGES WEST 0°06' PER YEAR.

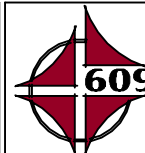
NOTES:

- ▲ INDICATES SECTION CORNER
- INDICATES CALCULATED CORNER
- ELEVATION BASED ON NAVD88 (GEOID12B)
- BASIS OF BEARING DERIVED FROM COLORADO COORDINATE SYSTEM OF 1983 NORTH ZONE.
- ALL MEASURED DISTANCES ARE GRID.
COMBINED SCALE FACTOR: .99972753 CALCULATED FROM THE W. 1/4 CORNER OF SECTION 4, T2N, R67W
- OPERATOR: ROB WILSON / PDOP = 1.6
- SEE ADDENDUM TO WELL LOCATION CERTIFICATE FOR EXISTING IMPROVEMENTS WITHIN 500' OF THE WELL PAD.
- WELL FOOTAGES ARE MEASURED AT RIGHT ANGLES TO THE SECTION LINES.
- THE BOTTOM OF HOLE BEARS N00°27'07"W, 4502' FROM THE HEEL LOCATION.
- LOTS 1 & 2 AS SHOWN HEREON ARE GOVERNMENT LOTS 1 & 2 OF THE ORIGINAL GLO SURVEY

WELL PAD - BABCOCK 19N-33HZ

BABCOCK 32N-33HZ
WELL LOCATION CERTIFICATE
 2138' FNL & 1950' FWL, LOT 1 (SENW) (SURFACE)
 2342' FNL & 269' FWL, LOT 1 (SWNW) (HEEL)
 LOCATED IN SECTION 4
 T2N, R67W, 6TH P.M.
 2160' FSL & 247' FWL NWSW (BOTTOM)
 LOCATED IN SECTION 33
 T3N, R67W, 6TH P.M.
 WELD COUNTY, COLORADO

**Kerr-McGee Oil &
 Gas Onshore L.P.**
 1099 18th Street
 Denver, Colorado 80202



CONSULTING, LLC

SHERIDAN OFFICE
 1095 Saberton Avenue
 Sheridan, Wyoming 82801
 Phone 307-674-0609

LOVELAND OFFICE
 1635 Foxtrail Drive, Suite 204
 Loveland, Colorado 80538
 Phone 970-776-4331

| | | | | |
|---------------|---------|----------------|---------|-----------|
| DRAFTED BY: | LMO | CHECKED BY: | RKF | SHEET NO: |
| DATE DRAFTED: | 4/27/16 | DATE SURVEYED: | 3/21/16 | 1 |
| REVISED: | 5/17/16 | FILE NAME: | 15-77 | 1 OF 2 |

T3N, R67W

NW. COR.
SEC. 33, T3N, R67W
FOUND 2 1/2" ALUM. CAP
L.S. NO. 19585

N 89°40'48" W 2598.98' (M)

N 89°40'33" W
1298.17' (M)

N 89°39'31" W
1298.62' (M)

NE. COR.
SEC. 33, T3N, R67W
FOUND 2" ALUM. CAP
L.S. NO. 23500

SURFACE LOCATION: NAD 83
GROUND ELEVATION= 4885.4'
LATITUDE= 40.169184°
LONGITUDE= -104.897427°
HEEL LOCATION: NAD 83
LATITUDE= 40.168688°
LONGITUDE= -104.903448°
BOTTOM HOLE LOCATION: NAD 83
LATITUDE= 40.181047°
LONGITUDE= -104.903467°
LATITUDE= 40°10'51.769"
LONGITUDE= -104°54'12.481"

N 00°31'59" W
2649.74' (C)

N 00°41'03" W 2643.06' (M)

W. 1/4 COR.
SEC. 33, T3N, R67W
FOUND 2 1/2" ALUM. CAP
L.S. NO. 23501

N 89°49'00" W
2596.39' (C)

N 89°49'00" W
2603.67' (C)

E. 1/4 COR.
SEC. 33, T3N, R67W
FOUND 2 1/2" ALUM. CAP
L.S. NO. 24305

247'

BOTTOM OF HOLE:
2160' FSL & 247' FWL

N 00°21'13" W 2631.43' (M)
N 00°27'07" W 4502' GRID
N 00°03'45" W TRUE
N 08°27'07" W MAGNETIC

N 00°31'59" W
2640.82' (C)

N 00°34'07" W 2682.42' (M)

SW. COR.
SEC. 33, T3N, R67W
FOUND 3" ALUM. CAP
L.S. NO. 38305

N 89°36'44" W 2604.76' (M)

N 88°54'10" W 2606.19' (M)

SE. COR.
SEC. 33, T3N, R67W
FOUND 2" ALUM. CAP
L.S. NO. 25937

33

N 00°31'59" W
2640.82' (C)

S. 1/4 COR.
SEC. 33, T3N, R67W
FOUND 2 1/2" ALUM. CAP
ILLEGIBLE

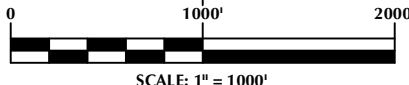
CERTIFICATE OF SURVEYOR:

THIS IS TO CERTIFY THAT THE ABOVE PLAT WAS PREPARED FROM FIELD NOTES OF ACTUAL SURVEY MADE BY ME OR UNDER MY SUPERVISION AND THAT THE SAME ARE TRUE AND CORRECT TO THE BEST OF MY KNOWLEDGE AND BELIEF. THIS CERTIFICATE DOES NOT REPRESENT A LAND SURVEY PLAT OR IMPROVEMENT SURVEY PLAT AS DEFINED BY C.R.S. 38-51-302 AND CANNOT BE RELIED UPON TO DETERMINE OWNERSHIP.

Randall K. French
PROFESSIONAL LAND SURVEYOR
COLORADO REGISTRATION NUMBER 38512
5/17/16

NOTICE:
ACCORDING TO COLORADO STATE LAW YOU MUST COMMENCE ANY LEGAL ACTION BASED UPON ANY DEFECT IN THIS SURVEY WITHIN THREE YEARS AFTER YOU FIRST DISCOVER SUCH DEFECT. IN NO EVENT MAY ANY ACTION BASED UPON ANY DEFECT IN THIS SURVEY BE COMMENCED MORE THAN TEN YEARS FROM THE DATE ON THE CERTIFICATION SHOWN HEREON.

23°22' 8°00'



NOTE:
MAGNETIC NORTH IS CURRENT AS OF 3/22/2016.
MAGNETIC NORTH CHANGES WEST 0°06' PER YEAR.

NOTES:

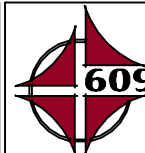
- ▲ INDICATES SECTION CORNER
- INDICATES CALCULATED CORNER
- ELEVATION BASED ON NAVD88 (GEOID12B)
- BASIS OF BEARING DERIVED FROM COLORADO COORDINATE SYSTEM OF 1983 NORTH ZONE.
- ALL MEASURED DISTANCES ARE GRID.
COMBINED SCALE FACTOR: .99972753 CALCULATED FROM THE W. 1/4 CORNER OF SECTION 4, T2N, R67W
- OPERATOR: ROB WILSON / PDOP = 1.6
- SEE ADDENDUM TO WELL LOCATION CERTIFICATE FOR EXISTING IMPROVEMENTS WITHIN 500' OF THE WELL PAD.
- WELL FOOTAGES ARE MEASURED AT RIGHT ANGLES TO THE SECTION LINES.
- THE BOTTOM OF HOLE BEARS N00°27'07"W, 4502' FROM THE HEEL LOCATION.
- LOTS 1 & 2 AS SHOWN HEREON ARE GOVERNMENT LOTS 1 & 2 OF THE ORIGINAL GLO SURVEY

MATCH LINE
SEE SHEET 1

WELL PAD - BABCOCK 19N-33HZ

BABCOCK 32N-33HZ
WELL LOCATION CERTIFICATE
2138' FNL & 1950' FWL, LOT 1 (SENW) (SURFACE)
2342' FNL & 269' FWL, LOT 1 (SWNW) (HEEL)
LOCATED IN SECTION 4
T2N, R67W, 6TH P.M.
2160' FSL & 247' FWL NWSW (BOTTOM)
LOCATED IN SECTION 33
T3N, R67W, 6TH P.M.
WELD COUNTY, COLORADO

Kerr-McGee Oil &
Gas Onshore L.P.
1099 18th Street
Denver, Colorado 80202



CONSULTING, LLC

SHERIDAN OFFICE
1095 Saberton Avenue
Sheridan, Wyoming 82801
Phone 307-674-0609

LOVELAND OFFICE
1635 Foxtrail Drive, Suite 204
Loveland, Colorado 80538
Phone 970-776-4331

| | | | | |
|---------------|---------|----------------|---------|-----------|
| DRAFTED BY: | LMO | CHECKED BY: | RKF | SHEET NO: |
| DATE DRAFTED: | 4/27/16 | DATE SURVEYED: | 3/21/16 | 2 |
| REVISED: | 5/17/16 | FILE NAME: | 15-77 | 2 OF 2 |