



# Kerr-McGee Oil & Gas Onshore LP

A subsidiary of Anadarko Petroleum Corporation

1099 18<sup>th</sup> Street  
Denver, CO 80202  
720-929-6000

June 17, 2016

Matt Lepore  
Director, Colorado Oil and Gas Conservation Commission  
Department of Natural Resources  
The Chancery Building  
1120 Lincoln Street, Suite 801  
Denver, CO 80203

Re: **30 Day Certification Letter - 318A.e**  
BABCOCK 23N-33HZ (Doc No. 401060909)  
Township 2 North, Range 67 West  
Gov. Lot 1, Section 4: SENW  
Unit Acreage: 320 acres  
Unit Spacing: 02N67W Sec 4: E2NW, W2NE  
03N67W Sec 33: E2SW, W2SE  
Weld County, Colorado

Dear Director Lepore:

Kerr McGee Oil and Gas Onshore LP (“KMG”) hereby certifies that KMG owns one hundred percent (100%) of the leasehold interest in the mineral rights in the proposed spacing unit. KMG hereby respectfully requests approval of this boundary well.

If you have any questions or issues regarding this permit, please contact our office.

Sincerely,

**Kerr-McGee Oil and Gas Onshore LP**

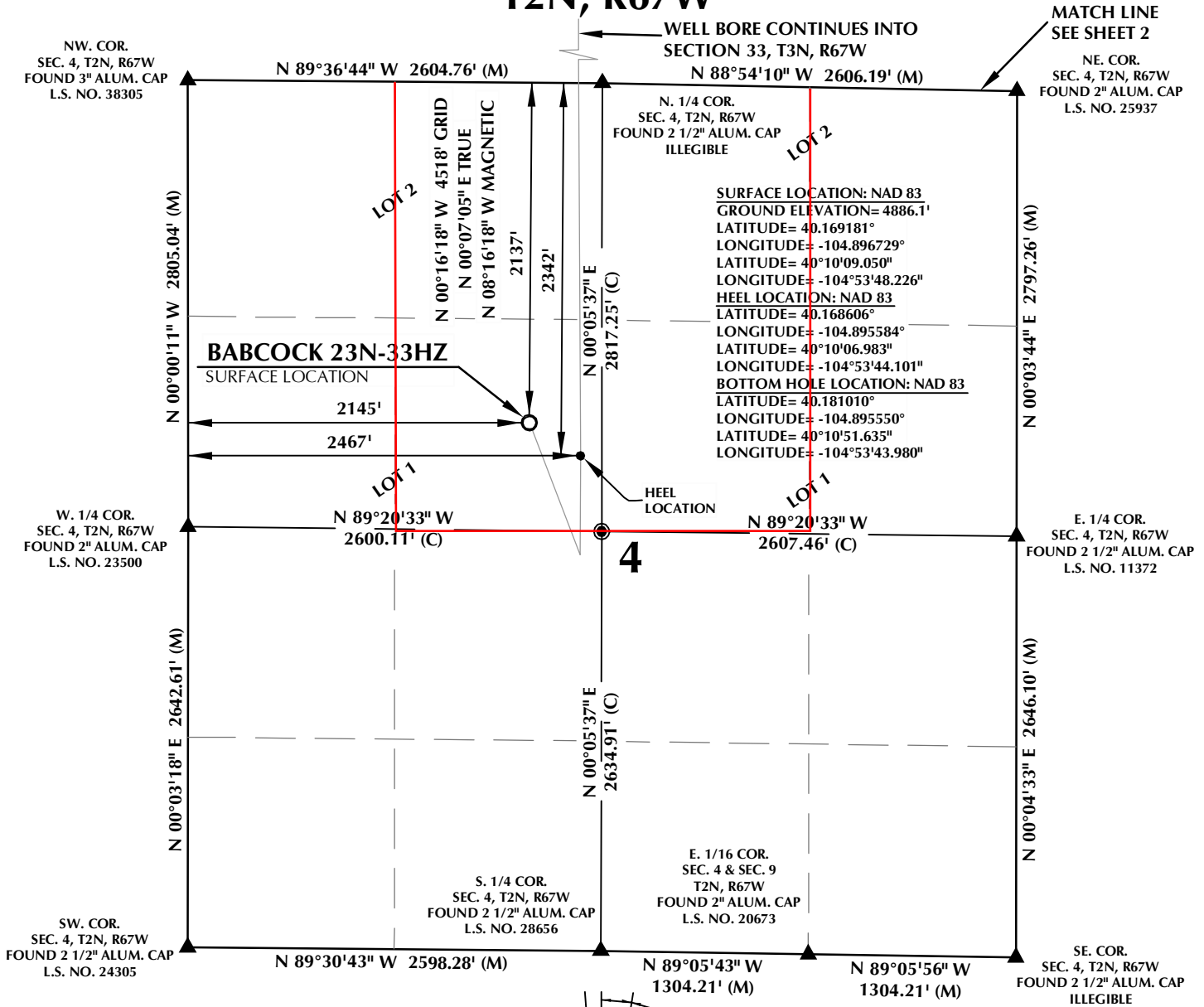
A handwritten signature in black ink that reads "Shayelyn Marshall".

Shayelyn Marshall  
Regulatory Analyst I

Enclosure

**PROPOSED SPACING UNIT**

**T2N, R67W**

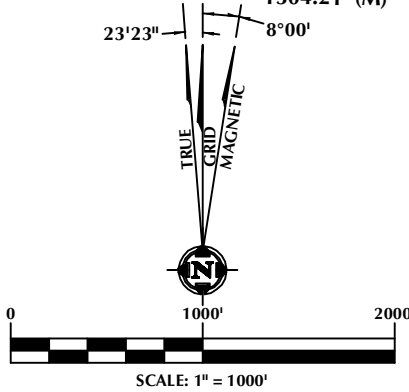


**CERTIFICATE OF SURVEYOR:**

THIS IS TO CERTIFY THAT THE ABOVE PLAT WAS PREPARED FROM FIELD NOTES OF ACTUAL SURVEY MADE BY ME OR UNDER MY SUPERVISION AND THAT THE SAME ARE TRUE AND CORRECT TO THE BEST OF MY KNOWLEDGE AND BELIEF. THIS CERTIFICATE DOES NOT REPRESENT A LAND SURVEY, PLAT OR IMPROVEMENT SURVEY PLAT AS DEFINED BY C.R.S. 38-51-302 AND CANNOT BE RELIED UPON TO DETERMINE OWNERSHIP.

*Randall K. French*  
 RANDALL K. FRENCH  
 PROFESSIONAL LAND SURVEYOR  
 COLORADO REGISTRATION NUMBER 38512  
 4/27/16

NOTICE: ACCORDING TO COLORADO STATE LAW YOU MUST COMMENCE ANY LEGAL ACTION BASED UPON ANY DEFECT IN THIS SURVEY WITHIN THREE YEARS AFTER YOU FIRST DISCOVER SUCH DEFECT. IN NO EVENT MAY ANY ACTION BASED UPON ANY DEFECT IN THIS SURVEY BE COMMENCED MORE THAN TEN YEARS FROM THE DATE ON THE CERTIFICATION SHOWN HEREON.



NOTE: MAGNETIC NORTH IS CURRENT AS OF 3/22/2016. MAGNETIC NORTH CHANGES WEST 0°06' PER YEAR.

**NOTES:**

- ▲ INDICATES SECTION CORNER
- INDICATES CALCULATED CORNER
- ELEVATION BASED ON NAVD88 (GEOID12B)
- BASIS OF BEARING DERIVED FROM COLORADO COORDINATE SYSTEM OF 1983 NORTH ZONE.
- ALL MEASURED DISTANCES ARE GRID. COMBINED SCALE FACTOR: .99972753 CALCULATED FROM THE W. 1/4 CORNER OF SECTION 4, T2N, R67W
- OPERATOR: ROB WILSON / PDOP = 1.7
- SEE ADDENDUM TO WELL LOCATION CERTIFICATE FOR EXISTING IMPROVEMENTS WITHIN 500' OF THE WELL PAD.
- WELL FOOTAGES ARE MEASURED AT RIGHT ANGLES TO THE SECTION LINES.
- THE BOTTOM OF HOLE BEARS N00°16'18"W, 4518' FROM THE HEEL LOCATION.
- LOTS 1 & 2 AS SHOWN HEREON ARE GOVERNMENT LOTS 1 & 2 OF THE ORIGINAL GLO SURVEY

**WELL PAD - BABCOCK 19N-33HZ**

**BABCOCK 23N-33HZ**  
 WELL LOCATION CERTIFICATE  
 2137' FNL & 2145' FWL, LOT 1 (SENW) (SURFACE)  
 2342' FNL & 2467' FWL, LOT 1 (SESW) (HEEL)  
 LOCATED IN SECTION 4  
 T2N, R67W, 6TH P.M.  
 2176' FSL & 2459' FWL NESW (BOTTOM)  
 LOCATED IN SECTION 33  
 T3N, R67W, 6TH P.M.  
 WELD COUNTY, COLORADO

**Kerr-McGee Oil & Gas Onshore L.P.**  
 1099 18th Street  
 Denver, Colorado 80202



**CONSULTING, LLC**  
 SHERIDAN OFFICE: 1095 Saberton Avenue, Sheridan, Wyoming 82801, Phone 307-674-0609  
 LOVELAND OFFICE: 1635 Foxtrail Drive, Suite 204, Loveland, Colorado 80538, Phone 970-776-4331

DRAFTED BY: LMO	CHECKED BY: RKF	SHEET NO: <b>1</b> OF 2
DATE DRAFTED: 4/27/16	DATE SURVEYED: 3/21/16	
REVISED:	FILE NAME: 15-77	

K:\ADAR\2015\2015\_77\_BABCOCK\_T2N\_R67W\_4\PLAT\51\BABCOCK\_19N-33HZ\_PLAT.dwg, 4/28/2016 3:01:13 PM, smmml

**PROPOSED SPACING UNIT**

**T3N, R67W**

NW. COR.  
SEC. 33, T3N, R67W  
FOUND 2 1/2" ALUM. CAP  
L.S. NO. 19585

N 89°40'48" W 2598.98' (M)

N 89°40'33" W  
1298.17' (M)

N 89°39'31" W  
1298.62' (M)

NE. COR.  
SEC. 33, T3N, R67W  
FOUND 2" ALUM. CAP  
L.S. NO. 23500

SURFACE LOCATION: NAD 83  
GROUND ELEVATION= 4886.1'  
LATITUDE= 40.169181°  
LONGITUDE= -104.896729°  
HEEL LOCATION: NAD 83  
LATITUDE= 40.168606°  
LONGITUDE= -104.895584°  
BOTTOM HOLE LOCATION: NAD 83  
LATITUDE= 40.181010°  
LONGITUDE= -104.895550°  
LONGITUDE= 40°10'51.635"  
LONGITUDE= -104°53'43.980"

N 00°31'59" W  
2649.74' (C)

N 00°35'13" W 2655.98' (M)

N 00°41'03" W 2643.06' (M)

W. 1/4 COR.  
SEC. 33, T3N, R67W  
FOUND 2 1/2" ALUM. CAP  
L.S. NO. 23501

N 89°49'00" W  
2596.39' (C)

N 89°49'00" W  
2603.67' (C)

E. 1/4 COR.  
SEC. 33, T3N, R67W  
FOUND 2 1/2" ALUM. CAP  
L.S. NO. 24305

N 00°21'13" W 2631.43' (M)

N 00°34'07" W 2682.42' (M)

2459'

1160'

464'

**33**

139'

BOTTOM OF HOLE:  
2176' FSL & 2459' FWL

N 00°16'18" W 4518' GRID  
N 00°07'05" E TRUE  
N 08°16'18" W MAGNETIC

856'

2176'

N 00°31'59" W  
2640.82' (C)

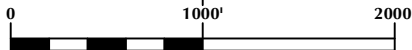
S. 1/4 COR.  
SEC. 33, T3N, R67W  
FOUND 2 1/2" ALUM. CAP  
ILLEGIBLE

N 89°36'44" W 2604.76' (M)

N 88°54'10" W 2606.19' (M)

SE. COR.  
SEC. 33, T3N, R67W  
FOUND 2" ALUM. CAP  
L.S. NO. 25937

23'23" 8°00'



SCALE: 1" = 1000'

NOTE:  
MAGNETIC NORTH IS CURRENT AS OF 3/22/2016.  
MAGNETIC NORTH CHANGES WEST 0°06' PER YEAR.

**NOTES:**

- ▲ INDICATES SECTION CORNER
- INDICATES CALCULATED CORNER
- ELEVATION BASED ON NAVD88 (GEOID12B)
- BASIS OF BEARING DERIVED FROM COLORADO COORDINATE SYSTEM OF 1983 NORTH ZONE.
- ALL MEASURED DISTANCES ARE GRID. COMBINED SCALE FACTOR: .99972753 CALCULATED FROM THE W. 1/4 CORNER OF SECTION 4, T2N, R67W
- OPERATOR: ROB WILSON / PDOP = 1.7
- SEE ADDENDUM TO WELL LOCATION CERTIFICATE FOR EXISTING IMPROVEMENTS WITHIN 500' OF THE WELL PAD.
- WELL FOOTAGES ARE MEASURED AT RIGHT ANGLES TO THE SECTION LINES.
- THE BOTTOM OF HOLE BEARS N00°16'18"W, 4518' FROM THE HEEL LOCATION.
- LOTS 1 & 2 AS SHOWN HEREON ARE GOVERNMENT LOTS 1 & 2 OF THE ORIGINAL GLO SURVEY

MATCH LINE  
SEE SHEET 1

**CERTIFICATE OF SURVEYOR:**

THIS IS TO CERTIFY THAT THE ABOVE PLAT WAS PREPARED FROM FIELD NOTES OF ACTUAL SURVEY MADE BY ME OR UNDER MY SUPERVISION AND THAT THE SAME ARE TRUE AND CORRECT TO THE BEST OF MY KNOWLEDGE AND BELIEF. THIS CERTIFICATE DOES NOT REPRESENT A LAND SURVEY, PLAT OR IMPROVEMENT SURVEY PLAT AS DEFINED BY C.R.S. 38-51-302 AND CANNOT BE RELIED UPON TO DETERMINE OWNERSHIP.

*Randall K. French*  
PROFESSIONAL LAND SURVEYOR  
COLORADO REGISTRATION NUMBER 38512  
5/17/15

NOTICE:  
ACCORDING TO COLORADO STATE LAW YOU MUST COMMENCE ANY LEGAL ACTION BASED UPON ANY DEFECT IN THIS SURVEY WITHIN THREE YEARS AFTER YOU FIRST DISCOVER SUCH DEFECT. IN NO EVENT MAY ANY ACTION BASED UPON ANY DEFECT IN THIS SURVEY BE COMMENCED MORE THAN TEN YEARS FROM THE DATE ON THE CERTIFICATION SHOWN HEREON.

**WELL PAD - BABCOCK 19N-33HZ**

BABCOCK 23N-33HZ  
WELL LOCATION CERTIFICATE  
2137' FNL & 2145' FWL, LOT 1 (SENW) (SURFACE)  
2342' FNL & 2467' FWL, LOT 1 (SENW) (HEEL)  
LOCATED IN SECTION 4  
T2N, R67W, 6TH P.M.  
2176' FSL & 2459' FWL NESW (BOTTOM)  
LOCATED IN SECTION 33  
T3N, R67W, 6TH P.M.  
WELD COUNTY, COLORADO

**Kerr-McGee Oil &  
Gas Onshore L.P.**  
1099 18th Street  
Denver, Colorado 80202



**CONSULTING, LLC**

SHERIDAN OFFICE 1095 Saberton Avenue Sheridan, Wyoming 82801 Phone 307-674-0609  
LOVELAND OFFICE 1635 Foxtrail Drive, Suite 204 Loveland, Colorado 80538 Phone 970-776-4331

DRAFTED BY: LMO	CHECKED BY: RKF	SHEET NO: <b>2</b> 2 OF 2
DATE DRAFTED: 4/27/16	DATE SURVEYED: 3/21/16	
REVISED: 5/17/15	FILE NAME: 15-77	