

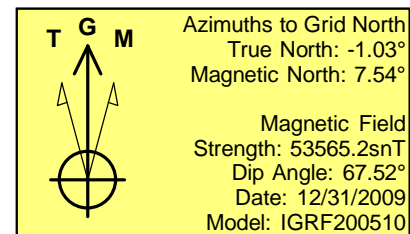
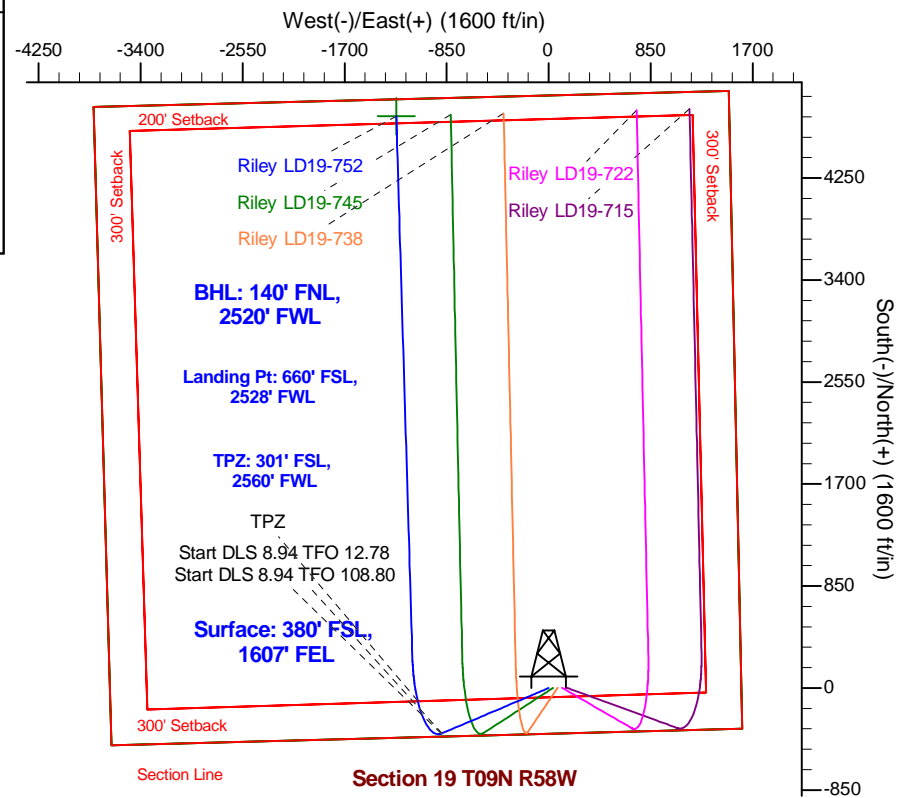
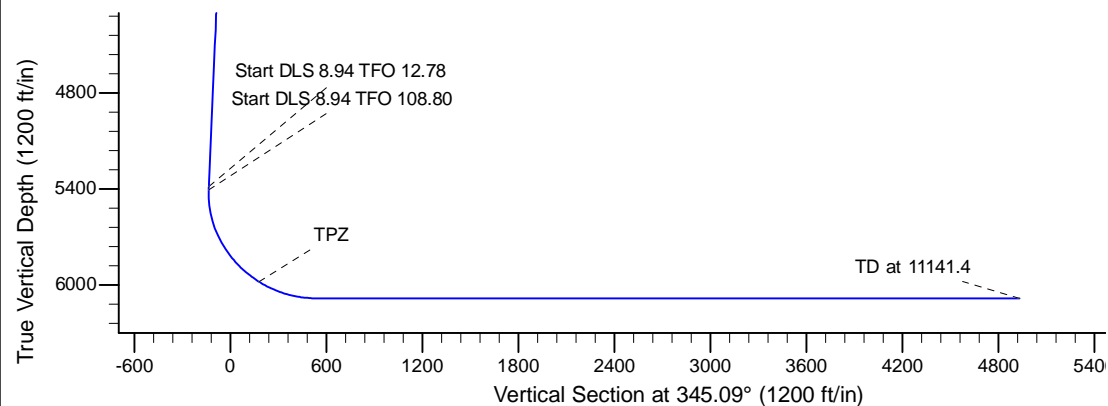
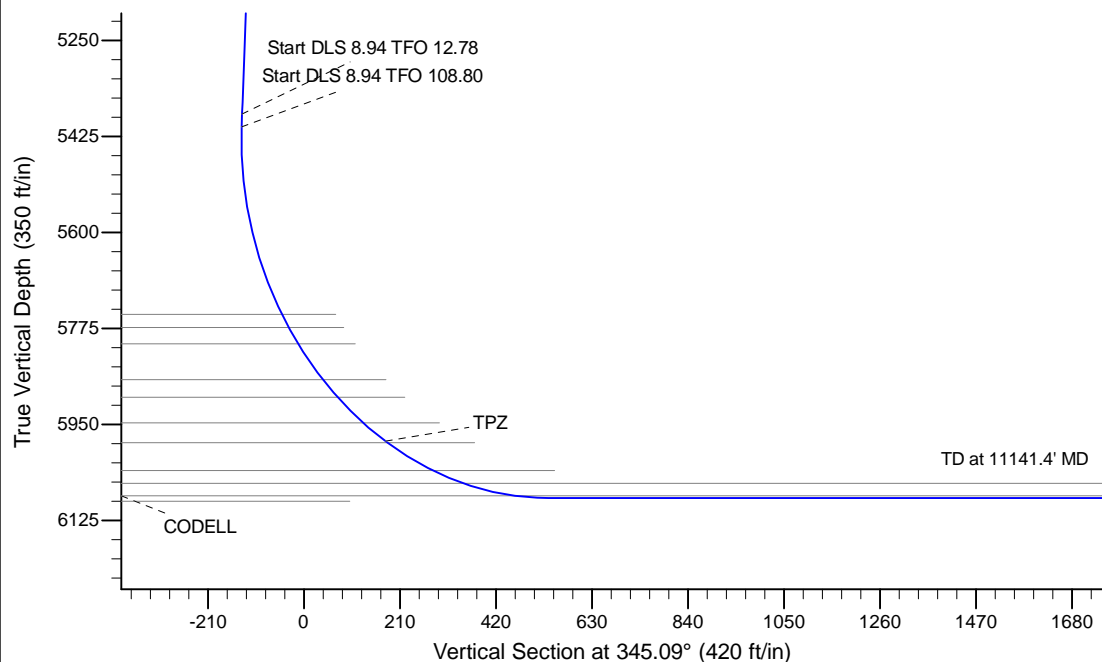
Project: Wattenberg Field
Site: LD (Sec.19-T09N-R58W) Weld County, CO
Well: Riley LD19-752
Wellbore: Original Drilling
Design: APD - Rev 1

Northern Region Drilling - Working

Geodetic System: US State Plane 1983
Datum: North American Datum 1983
Ellipsoid: GRS 1980
Zone: Colorado Northern Zone
System Datum: Mean Sea Level

SECTION DETAILS

Sec	MD	Inc	Azi	TVD	+N/-S	+E/-W	Dleg	TFace	VSect	Target
1	0.0	0.00	0.00	0.0	0.0	0.0	0.00	0.00	0.0	
2	1800.0	0.00	0.00	1800.0	0.0	0.0	0.00	0.00	0.0	
3	2650.0	17.00	247.00	2637.6	-48.9	-115.2	2.00	247.00	-17.6	
4	5521.9	17.00	247.00	5384.0	-377.0	-888.1	0.00	0.00	-135.7	
5	5546.3	19.14	248.47	5407.2	-379.9	-895.2	8.94	12.78	-136.7	
6	6624.1	90.00	358.29	6084.0	250.0	-1135.0	8.94	108.80	533.7	
7	11141.4	90.00	358.30	6084.0	4765.3	-1269.2	0.00	90.00	4931.4	Riley LD19-752 BHL 140'FNL, 2520'FWL



WELL DETAILS: Riley LD19-752

	Northing	Easting	Ground Level: 4820.0	Latitude	Longitude
0.0	0.0	1512857.95	3442476.69	40.730250	-103.903410

Plan: APD - Rev 1 (Riley LD19-752/Original Drilling)

Created By: Shailey Jewell Date: 9:43, May 20 2016

Checked: _____ Date: _____

Reviewed: _____ Date: _____

Approved: _____ Date: _____

Northern Region Drilling - Working

Wattenberg Field

LD (09N-58W)

Riley LD19-752

Original Drilling

Plan: APD - Rev 1

Standard Planning Report

20 May, 2016

Planning Report

Database:	EDM01P	Local Co-ordinate Reference:	Well Riley LD19-752
Company:	Northern Region Drilling - Working	TVD Reference:	WELL @ 4850.0ft (Original Well Elev)
Project:	Wattenberg Field	MD Reference:	WELL @ 4850.0ft (Original Well Elev)
Site:	LD (09N-58W)	North Reference:	Grid
Well:	Riley LD19-752	Survey Calculation Method:	Minimum Curvature
Wellbore:	Original Drilling		
Design:	APD - Rev 1		

Project	Wattenberg Field, Weld County CO		
Map System:	US State Plane 1983	System Datum:	Mean Sea Level
Geo Datum:	North American Datum 1983		
Map Zone:	Colorado Northern Zone		Using geodetic scale factor

Site		LD (09N-58W)			
Site Position:		Northing:	1,523,557.18 usft	Latitude:	40.759270
From:	Lat/Long	Easting:	3,449,341.23 usft	Longitude:	-103.877940
Position Uncertainty:	0.0 ft	Slot Radius:	13-3/16 "	Grid Convergence:	1.05 °

Well	Riley LD19-752					
Well Position	+N/-S	-10,699.3 ft	Northing:	1,512,857.95 usft	Latitude:	40.730250
	+E/-W	-6,864.6 ft	Easting:	3,442,476.68 usft	Longitude:	-103.903410
Position Uncertainty		0.0 ft	Wellhead Elevation:	0.0 ft	Ground Level:	4,820.0 ft

Wellbore	Original Drilling				
Magnetics	Model Name	Sample Date	Declination (°)	Dip Angle (°)	Field Strength (nT)
	IGRF200510	12/31/2009	8.58	67.52	53,565

Design	APD - Rev 1			
Audit Notes:				
Version:	Phase:	PROTOTYPE	Tie On Depth:	0.0
Vertical Section:	Depth From (TVD)	+N/-S	+E/-W	Direction
	(ft)	(ft)	(ft)	(°)
	0.0	0.0	0.0	345.09

Plan Sections										
Measured Depth (ft)	Inclination (°)	Azimuth (°)	Vertical Depth (ft)	+N/-S (ft)	+E/-W (ft)	Dogleg Rate (°/100usft)	Build Rate (°/100usft)	Turn Rate (°/100usft)	TFO (°)	Target
0.0	0.00	0.00	0.0	0.0	0.0	0.00	0.00	0.00	0.00	
1,800.0	0.00	0.00	1,800.0	0.0	0.0	0.00	0.00	0.00	0.00	
2,650.0	17.00	247.00	2,637.6	-48.9	-115.2	2.00	2.00	0.00	247.00	
5,521.9	17.00	247.00	5,384.0	-377.0	-888.1	0.00	0.00	0.00	0.00	
5,546.3	19.14	248.47	5,407.2	-379.9	-895.2	8.94	8.75	6.03	12.78	
6,624.1	90.00	358.29	6,084.0	250.0	-1,135.0	8.94	6.57	10.19	108.80	
11,141.4	90.00	358.30	6,084.0	4,765.3	-1,269.2	0.00	0.00	0.00	90.00	Riley LD19-752 BHL

Planning Report

Database:	EDM01P	Local Co-ordinate Reference:	Well Riley LD19-752
Company:	Northern Region Drilling - Working	TVD Reference:	WELL @ 4850.0ft (Original Well Elev)
Project:	Wattenberg Field	MD Reference:	WELL @ 4850.0ft (Original Well Elev)
Site:	LD (09N-58W)	North Reference:	Grid
Well:	Riley LD19-752	Survey Calculation Method:	Minimum Curvature
Wellbore:	Original Drilling		
Design:	APD - Rev 1		

Planned Survey									
Measured Depth (ft)	Inclination (°)	Azimuth (°)	Vertical Depth (ft)	+N/-S (ft)	+E/-W (ft)	Vertical Section (ft)	Dogleg Rate (°/100usft)	Build Rate (°/100usft)	Turn Rate (°/100usft)
0.0	0.00	0.00	0.0	0.0	0.0	0.0	0.00	0.00	0.00
50.0	0.00	0.00	50.0	0.0	0.0	0.0	0.00	0.00	0.00
100.0	0.00	0.00	100.0	0.0	0.0	0.0	0.00	0.00	0.00
150.0	0.00	0.00	150.0	0.0	0.0	0.0	0.00	0.00	0.00
200.0	0.00	0.00	200.0	0.0	0.0	0.0	0.00	0.00	0.00
250.0	0.00	0.00	250.0	0.0	0.0	0.0	0.00	0.00	0.00
300.0	0.00	0.00	300.0	0.0	0.0	0.0	0.00	0.00	0.00
350.0	0.00	0.00	350.0	0.0	0.0	0.0	0.00	0.00	0.00
400.0	0.00	0.00	400.0	0.0	0.0	0.0	0.00	0.00	0.00
450.0	0.00	0.00	450.0	0.0	0.0	0.0	0.00	0.00	0.00
500.0	0.00	0.00	500.0	0.0	0.0	0.0	0.00	0.00	0.00
550.0	0.00	0.00	550.0	0.0	0.0	0.0	0.00	0.00	0.00
600.0	0.00	0.00	600.0	0.0	0.0	0.0	0.00	0.00	0.00
650.0	0.00	0.00	650.0	0.0	0.0	0.0	0.00	0.00	0.00
700.0	0.00	0.00	700.0	0.0	0.0	0.0	0.00	0.00	0.00
750.0	0.00	0.00	750.0	0.0	0.0	0.0	0.00	0.00	0.00
800.0	0.00	0.00	800.0	0.0	0.0	0.0	0.00	0.00	0.00
850.0	0.00	0.00	850.0	0.0	0.0	0.0	0.00	0.00	0.00
900.0	0.00	0.00	900.0	0.0	0.0	0.0	0.00	0.00	0.00
950.0	0.00	0.00	950.0	0.0	0.0	0.0	0.00	0.00	0.00
1,000.0	0.00	0.00	1,000.0	0.0	0.0	0.0	0.00	0.00	0.00
1,050.0	0.00	0.00	1,050.0	0.0	0.0	0.0	0.00	0.00	0.00
1,100.0	0.00	0.00	1,100.0	0.0	0.0	0.0	0.00	0.00	0.00
1,150.0	0.00	0.00	1,150.0	0.0	0.0	0.0	0.00	0.00	0.00
1,200.0	0.00	0.00	1,200.0	0.0	0.0	0.0	0.00	0.00	0.00
1,250.0	0.00	0.00	1,250.0	0.0	0.0	0.0	0.00	0.00	0.00
1,300.0	0.00	0.00	1,300.0	0.0	0.0	0.0	0.00	0.00	0.00
1,350.0	0.00	0.00	1,350.0	0.0	0.0	0.0	0.00	0.00	0.00
1,400.0	0.00	0.00	1,400.0	0.0	0.0	0.0	0.00	0.00	0.00
1,450.0	0.00	0.00	1,450.0	0.0	0.0	0.0	0.00	0.00	0.00
1,500.0	0.00	0.00	1,500.0	0.0	0.0	0.0	0.00	0.00	0.00
1,550.0	0.00	0.00	1,550.0	0.0	0.0	0.0	0.00	0.00	0.00
1,600.0	0.00	0.00	1,600.0	0.0	0.0	0.0	0.00	0.00	0.00
1,650.0	0.00	0.00	1,650.0	0.0	0.0	0.0	0.00	0.00	0.00
1,700.0	0.00	0.00	1,700.0	0.0	0.0	0.0	0.00	0.00	0.00
1,750.0	0.00	0.00	1,750.0	0.0	0.0	0.0	0.00	0.00	0.00
1,800.0	0.00	0.00	1,800.0	0.0	0.0	0.0	0.00	0.00	0.00
1,850.0	1.00	247.00	1,850.0	-0.2	-0.4	-0.1	2.00	2.00	0.00
1,900.0	2.00	247.00	1,900.0	-0.7	-1.6	-0.2	2.00	2.00	0.00
1,950.0	3.00	247.00	1,949.9	-1.5	-3.6	-0.6	2.00	2.00	0.00
2,000.0	4.00	247.00	1,999.8	-2.7	-6.4	-1.0	2.00	2.00	0.00
2,050.0	5.00	247.00	2,049.7	-4.3	-10.0	-1.5	2.00	2.00	0.00
2,100.0	6.00	247.00	2,099.5	-6.1	-14.4	-2.2	2.00	2.00	0.00
2,150.0	7.00	247.00	2,149.1	-8.3	-19.7	-3.0	2.00	2.00	0.00
2,200.0	8.00	247.00	2,198.7	-10.9	-25.7	-3.9	2.00	2.00	0.00
2,250.0	9.00	247.00	2,248.2	-13.8	-32.5	-5.0	2.00	2.00	0.00
2,300.0	10.00	247.00	2,297.5	-17.0	-40.1	-6.1	2.00	2.00	0.00
2,350.0	11.00	247.00	2,346.6	-20.6	-48.4	-7.4	2.00	2.00	0.00
2,400.0	12.00	247.00	2,395.6	-24.5	-57.6	-8.8	2.00	2.00	0.00
2,450.0	13.00	247.00	2,444.4	-28.7	-67.6	-10.3	2.00	2.00	0.00
2,500.0	14.00	247.00	2,493.1	-33.2	-78.3	-12.0	2.00	2.00	0.00
2,550.0	15.00	247.00	2,541.5	-38.1	-89.9	-13.7	2.00	2.00	0.00
2,600.0	16.00	247.00	2,589.6	-43.4	-102.2	-15.6	2.00	2.00	0.00
2,650.0	17.00	247.00	2,637.6	-48.9	-115.2	-17.6	2.00	2.00	0.00

Planning Report

Database:	EDM01P	Local Co-ordinate Reference:	Well Riley LD19-752
Company:	Northern Region Drilling - Working	TVD Reference:	WELL @ 4850.0ft (Original Well Elev)
Project:	Wattenberg Field	MD Reference:	WELL @ 4850.0ft (Original Well Elev)
Site:	LD (09N-58W)	North Reference:	Grid
Well:	Riley LD19-752	Survey Calculation Method:	Minimum Curvature
Wellbore:	Original Drilling		
Design:	APD - Rev 1		

Planned Survey									
Measured Depth (ft)	Inclination (°)	Azimuth (°)	Vertical Depth (ft)	+N/-S (ft)	+E/-W (ft)	Vertical Section (ft)	Dogleg Rate (°/100usft)	Build Rate (°/100usft)	Turn Rate (°/100usft)
2,700.0	17.00	247.00	2,685.4	-54.6	-128.7	-19.7	0.00	0.00	0.00
2,750.0	17.00	247.00	2,733.2	-60.3	-142.1	-21.7	0.00	0.00	0.00
2,800.0	17.00	247.00	2,781.0	-66.0	-155.6	-23.8	0.00	0.00	0.00
2,850.0	17.00	247.00	2,828.8	-71.8	-169.1	-25.8	0.00	0.00	0.00
2,900.0	17.00	247.00	2,876.7	-77.5	-182.5	-27.9	0.00	0.00	0.00
2,950.0	17.00	247.00	2,924.5	-83.2	-196.0	-29.9	0.00	0.00	0.00
3,000.0	17.00	247.00	2,972.3	-88.9	-209.4	-32.0	0.00	0.00	0.00
3,050.0	17.00	247.00	3,020.1	-94.6	-222.9	-34.1	0.00	0.00	0.00
3,100.0	17.00	247.00	3,067.9	-100.3	-236.3	-36.1	0.00	0.00	0.00
3,150.0	17.00	247.00	3,115.7	-106.0	-249.8	-38.2	0.00	0.00	0.00
3,200.0	17.00	247.00	3,163.6	-111.7	-263.2	-40.2	0.00	0.00	0.00
3,250.0	17.00	247.00	3,211.4	-117.5	-276.7	-42.3	0.00	0.00	0.00
3,300.0	17.00	247.00	3,259.2	-123.2	-290.2	-44.3	0.00	0.00	0.00
3,350.0	17.00	247.00	3,307.0	-128.9	-303.6	-46.4	0.00	0.00	0.00
3,400.0	17.00	247.00	3,354.8	-134.6	-317.1	-48.4	0.00	0.00	0.00
3,450.0	17.00	247.00	3,402.6	-140.3	-330.5	-50.5	0.00	0.00	0.00
3,500.0	17.00	247.00	3,450.4	-146.0	-344.0	-52.6	0.00	0.00	0.00
3,550.0	17.00	247.00	3,498.3	-151.7	-357.4	-54.6	0.00	0.00	0.00
3,600.0	17.00	247.00	3,546.1	-157.4	-370.9	-56.7	0.00	0.00	0.00
3,650.0	17.00	247.00	3,593.9	-163.1	-384.4	-58.7	0.00	0.00	0.00
3,700.0	17.00	247.00	3,641.7	-168.9	-397.8	-60.8	0.00	0.00	0.00
3,750.0	17.00	247.00	3,689.5	-174.6	-411.3	-62.8	0.00	0.00	0.00
3,800.0	17.00	247.00	3,737.3	-180.3	-424.7	-64.9	0.00	0.00	0.00
3,850.0	17.00	247.00	3,785.1	-186.0	-438.2	-67.0	0.00	0.00	0.00
3,900.0	17.00	247.00	3,833.0	-191.7	-451.6	-69.0	0.00	0.00	0.00
3,950.0	17.00	247.00	3,880.8	-197.4	-465.1	-71.1	0.00	0.00	0.00
4,000.0	17.00	247.00	3,928.6	-203.1	-478.6	-73.1	0.00	0.00	0.00
4,050.0	17.00	247.00	3,976.4	-208.8	-492.0	-75.2	0.00	0.00	0.00
4,100.0	17.00	247.00	4,024.2	-214.6	-505.5	-77.2	0.00	0.00	0.00
4,150.0	17.00	247.00	4,072.0	-220.3	-518.9	-79.3	0.00	0.00	0.00
4,200.0	17.00	247.00	4,119.9	-226.0	-532.4	-81.3	0.00	0.00	0.00
4,250.0	17.00	247.00	4,167.7	-231.7	-545.8	-83.4	0.00	0.00	0.00
4,300.0	17.00	247.00	4,215.5	-237.4	-559.3	-85.5	0.00	0.00	0.00
4,350.0	17.00	247.00	4,263.3	-243.1	-572.7	-87.5	0.00	0.00	0.00
4,400.0	17.00	247.00	4,311.1	-248.8	-586.2	-89.6	0.00	0.00	0.00
4,450.0	17.00	247.00	4,358.9	-254.5	-599.7	-91.6	0.00	0.00	0.00
4,500.0	17.00	247.00	4,406.7	-260.3	-613.1	-93.7	0.00	0.00	0.00
4,550.0	17.00	247.00	4,454.6	-266.0	-626.6	-95.7	0.00	0.00	0.00
4,600.0	17.00	247.00	4,502.4	-271.7	-640.0	-97.8	0.00	0.00	0.00
4,650.0	17.00	247.00	4,550.2	-277.4	-653.5	-99.9	0.00	0.00	0.00
4,700.0	17.00	247.00	4,598.0	-283.1	-666.9	-101.9	0.00	0.00	0.00
4,750.0	17.00	247.00	4,645.8	-288.8	-680.4	-104.0	0.00	0.00	0.00
4,800.0	17.00	247.00	4,693.6	-294.5	-693.9	-106.0	0.00	0.00	0.00
4,850.0	17.00	247.00	4,741.5	-300.2	-707.3	-108.1	0.00	0.00	0.00
4,900.0	17.00	247.00	4,789.3	-305.9	-720.8	-110.1	0.00	0.00	0.00
4,950.0	17.00	247.00	4,837.1	-311.7	-734.2	-112.2	0.00	0.00	0.00
5,000.0	17.00	247.00	4,884.9	-317.4	-747.7	-114.2	0.00	0.00	0.00
5,050.0	17.00	247.00	4,932.7	-323.1	-761.1	-116.3	0.00	0.00	0.00
5,100.0	17.00	247.00	4,980.5	-328.8	-774.6	-118.4	0.00	0.00	0.00
5,150.0	17.00	247.00	5,028.3	-334.5	-788.1	-120.4	0.00	0.00	0.00
5,200.0	17.00	247.00	5,076.2	-340.2	-801.5	-122.5	0.00	0.00	0.00
5,250.0	17.00	247.00	5,124.0	-345.9	-815.0	-124.5	0.00	0.00	0.00
5,300.0	17.00	247.00	5,171.8	-351.6	-828.4	-126.6	0.00	0.00	0.00
5,350.0	17.00	247.00	5,219.6	-357.4	-841.9	-128.6	0.00	0.00	0.00

Planning Report

Database:	EDM01P	Local Co-ordinate Reference:	Well Riley LD19-752
Company:	Northern Region Drilling - Working	TVD Reference:	WELL @ 4850.0ft (Original Well Elev)
Project:	Wattenberg Field	MD Reference:	WELL @ 4850.0ft (Original Well Elev)
Site:	LD (09N-58W)	North Reference:	Grid
Well:	Riley LD19-752	Survey Calculation Method:	Minimum Curvature
Wellbore:	Original Drilling		
Design:	APD - Rev 1		

Planned Survey									
Measured Depth (ft)	Inclination (°)	Azimuth (°)	Vertical Depth (ft)	+N/-S (ft)	+E/-W (ft)	Vertical Section (ft)	Dogleg Rate (°/100usft)	Build Rate (°/100usft)	Turn Rate (°/100usft)
5,400.0	17.00	247.00	5,267.4	-363.1	-855.3	-130.7	0.00	0.00	0.00
5,450.0	17.00	247.00	5,315.2	-368.8	-868.8	-132.8	0.00	0.00	0.00
5,500.0	17.00	247.00	5,363.1	-374.5	-882.2	-134.8	0.00	0.00	0.00
5,521.9	17.00	247.00	5,384.0	-377.0	-888.1	-135.7	0.00	0.00	0.00
5,546.3	19.14	248.47	5,407.2	-379.9	-895.2	-136.7	8.94	8.75	6.03
5,550.0	19.03	249.42	5,410.7	-380.3	-896.3	-136.8	8.94	-2.82	25.96
5,600.0	18.15	263.20	5,458.1	-384.1	-911.6	-136.5	8.94	-1.78	27.56
5,650.0	18.30	277.53	5,505.6	-384.0	-927.2	-132.4	8.94	0.31	28.64
5,700.0	19.47	290.89	5,552.9	-380.0	-942.7	-124.5	8.94	2.35	26.72
5,750.0	21.50	302.31	5,599.8	-372.1	-958.3	-112.9	8.94	4.05	22.84
5,800.0	24.16	311.59	5,645.9	-360.4	-973.7	-97.7	8.94	5.32	18.56
5,850.0	27.27	319.00	5,690.9	-345.0	-988.9	-78.8	8.94	6.23	14.82
5,900.0	30.70	324.94	5,734.7	-325.9	-1,003.7	-56.5	8.94	6.86	11.87
5,950.0	34.35	329.76	5,776.8	-303.2	-1,018.2	-30.9	8.94	7.30	9.63
6,000.0	38.15	333.74	5,817.2	-277.2	-1,032.1	-2.2	8.94	7.61	7.96
6,050.0	42.07	337.09	5,855.4	-247.9	-1,045.5	29.6	8.94	7.83	6.70
6,100.0	46.07	339.96	5,891.3	-215.5	-1,058.2	64.1	8.94	8.00	5.75
6,150.0	50.13	342.47	5,924.7	-180.3	-1,070.1	101.2	8.94	8.13	5.02
6,200.0	54.25	344.69	5,955.4	-142.4	-1,081.3	140.7	8.94	8.22	4.45
6,250.0	58.39	346.70	5,983.1	-102.1	-1,091.5	182.3	8.94	8.30	4.01
6,300.0	62.57	348.54	6,007.7	-59.6	-1,100.8	225.7	8.94	8.35	3.67
6,350.0	66.77	350.23	6,029.1	-15.2	-1,109.2	270.8	8.94	8.40	3.40
6,400.0	70.99	351.83	6,047.1	30.9	-1,116.4	317.2	8.94	8.43	3.19
6,450.0	75.22	353.35	6,061.6	78.3	-1,122.6	364.6	8.94	8.46	3.03
6,500.0	79.45	354.81	6,072.6	126.8	-1,127.6	412.8	8.94	8.48	2.92
6,550.0	83.70	356.22	6,079.9	176.1	-1,131.5	461.4	8.94	8.49	2.84
6,600.0	87.95	357.62	6,083.6	225.9	-1,134.1	510.2	8.94	8.50	2.79
6,624.1	90.00	358.29	6,084.0	250.0	-1,135.0	533.7	8.94	8.50	2.78
6,650.0	90.00	358.29	6,084.0	275.9	-1,135.8	558.9	0.00	0.00	0.00
6,700.0	90.00	358.29	6,084.0	325.8	-1,137.3	607.6	0.00	0.00	0.00
6,750.0	90.00	358.29	6,084.0	375.8	-1,138.8	656.2	0.00	0.00	0.00
6,800.0	90.00	358.29	6,084.0	425.8	-1,140.2	704.9	0.00	0.00	0.00
6,850.0	90.00	358.29	6,084.0	475.8	-1,141.7	753.6	0.00	0.00	0.00
6,900.0	90.00	358.29	6,084.0	525.8	-1,143.2	802.3	0.00	0.00	0.00
6,950.0	90.00	358.29	6,084.0	575.7	-1,144.7	851.0	0.00	0.00	0.00
7,000.0	90.00	358.29	6,084.0	625.7	-1,146.2	899.6	0.00	0.00	0.00
7,050.0	90.00	358.29	6,084.0	675.7	-1,147.7	948.3	0.00	0.00	0.00
7,100.0	90.00	358.29	6,084.0	725.7	-1,149.2	997.0	0.00	0.00	0.00
7,150.0	90.00	358.29	6,084.0	775.6	-1,150.7	1,045.7	0.00	0.00	0.00
7,200.0	90.00	358.29	6,084.0	825.6	-1,152.2	1,094.3	0.00	0.00	0.00
7,250.0	90.00	358.29	6,084.0	875.6	-1,153.7	1,143.0	0.00	0.00	0.00
7,300.0	90.00	358.29	6,084.0	925.6	-1,155.2	1,191.7	0.00	0.00	0.00
7,350.0	90.00	358.29	6,084.0	975.6	-1,156.6	1,240.4	0.00	0.00	0.00
7,400.0	90.00	358.29	6,084.0	1,025.5	-1,158.1	1,289.1	0.00	0.00	0.00
7,450.0	90.00	358.29	6,084.0	1,075.5	-1,159.6	1,337.7	0.00	0.00	0.00
7,500.0	90.00	358.29	6,084.0	1,125.5	-1,161.1	1,386.4	0.00	0.00	0.00
7,550.0	90.00	358.29	6,084.0	1,175.5	-1,162.6	1,435.1	0.00	0.00	0.00
7,600.0	90.00	358.29	6,084.0	1,225.4	-1,164.1	1,483.8	0.00	0.00	0.00
7,650.0	90.00	358.29	6,084.0	1,275.4	-1,165.6	1,532.4	0.00	0.00	0.00
7,700.0	90.00	358.29	6,084.0	1,325.4	-1,167.1	1,581.1	0.00	0.00	0.00
7,750.0	90.00	358.29	6,084.0	1,375.4	-1,168.6	1,629.8	0.00	0.00	0.00
7,800.0	90.00	358.29	6,084.0	1,425.4	-1,170.1	1,678.5	0.00	0.00	0.00
7,850.0	90.00	358.29	6,084.0	1,475.3	-1,171.5	1,727.2	0.00	0.00	0.00
7,900.0	90.00	358.29	6,084.0	1,525.3	-1,173.0	1,775.8	0.00	0.00	0.00

Planning Report

Database:	EDM01P	Local Co-ordinate Reference:	Well Riley LD19-752
Company:	Northern Region Drilling - Working	TVD Reference:	WELL @ 4850.0ft (Original Well Elev)
Project:	Wattenberg Field	MD Reference:	WELL @ 4850.0ft (Original Well Elev)
Site:	LD (09N-58W)	North Reference:	Grid
Well:	Riley LD19-752	Survey Calculation Method:	Minimum Curvature
Wellbore:	Original Drilling		
Design:	APD - Rev 1		

Planned Survey										
Measured Depth (ft)	Inclination (°)	Azimuth (°)	Vertical Depth (ft)	+N/-S (ft)	+E/-W (ft)	Vertical Section (ft)	Dogleg Rate (°/100usft)	Build Rate (°/100usft)	Turn Rate (°/100usft)	
7,950.0	90.00	358.29	6,084.0	1,575.3	-1,174.5	1,824.5	0.00	0.00	0.00	
8,000.0	90.00	358.29	6,084.0	1,625.3	-1,176.0	1,873.2	0.00	0.00	0.00	
8,050.0	90.00	358.29	6,084.0	1,675.2	-1,177.5	1,921.9	0.00	0.00	0.00	
8,100.0	90.00	358.29	6,084.0	1,725.2	-1,179.0	1,970.5	0.00	0.00	0.00	
8,150.0	90.00	358.29	6,084.0	1,775.2	-1,180.5	2,019.2	0.00	0.00	0.00	
8,200.0	90.00	358.30	6,084.0	1,825.2	-1,182.0	2,067.9	0.00	0.00	0.00	
8,250.0	90.00	358.30	6,084.0	1,875.2	-1,183.4	2,116.6	0.00	0.00	0.00	
8,300.0	90.00	358.30	6,084.0	1,925.1	-1,184.9	2,165.2	0.00	0.00	0.00	
8,350.0	90.00	358.30	6,084.0	1,975.1	-1,186.4	2,213.9	0.00	0.00	0.00	
8,400.0	90.00	358.30	6,084.0	2,025.1	-1,187.9	2,262.6	0.00	0.00	0.00	
8,450.0	90.00	358.30	6,084.0	2,075.1	-1,189.4	2,311.3	0.00	0.00	0.00	
8,500.0	90.00	358.30	6,084.0	2,125.0	-1,190.9	2,360.0	0.00	0.00	0.00	
8,550.0	90.00	358.30	6,084.0	2,175.0	-1,192.4	2,408.6	0.00	0.00	0.00	
8,600.0	90.00	358.30	6,084.0	2,225.0	-1,193.9	2,457.3	0.00	0.00	0.00	
8,650.0	90.00	358.30	6,084.0	2,275.0	-1,195.3	2,506.0	0.00	0.00	0.00	
8,700.0	90.00	358.30	6,084.0	2,325.0	-1,196.8	2,554.7	0.00	0.00	0.00	
8,750.0	90.00	358.30	6,084.0	2,374.9	-1,198.3	2,603.3	0.00	0.00	0.00	
8,800.0	90.00	358.30	6,084.0	2,424.9	-1,199.8	2,652.0	0.00	0.00	0.00	
8,850.0	90.00	358.30	6,084.0	2,474.9	-1,201.3	2,700.7	0.00	0.00	0.00	
8,900.0	90.00	358.30	6,084.0	2,524.9	-1,202.8	2,749.4	0.00	0.00	0.00	
8,950.0	90.00	358.30	6,084.0	2,574.8	-1,204.3	2,798.0	0.00	0.00	0.00	
9,000.0	90.00	358.30	6,084.0	2,624.8	-1,205.7	2,846.7	0.00	0.00	0.00	
9,050.0	90.00	358.30	6,084.0	2,674.8	-1,207.2	2,895.4	0.00	0.00	0.00	
9,100.0	90.00	358.30	6,084.0	2,724.8	-1,208.7	2,944.1	0.00	0.00	0.00	
9,150.0	90.00	358.30	6,084.0	2,774.8	-1,210.2	2,992.8	0.00	0.00	0.00	
9,200.0	90.00	358.30	6,084.0	2,824.7	-1,211.7	3,041.4	0.00	0.00	0.00	
9,250.0	90.00	358.30	6,084.0	2,874.7	-1,213.2	3,090.1	0.00	0.00	0.00	
9,300.0	90.00	358.30	6,084.0	2,924.7	-1,214.6	3,138.8	0.00	0.00	0.00	
9,350.0	90.00	358.30	6,084.0	2,974.7	-1,216.1	3,187.5	0.00	0.00	0.00	
9,400.0	90.00	358.30	6,084.0	3,024.6	-1,217.6	3,236.1	0.00	0.00	0.00	
9,450.0	90.00	358.30	6,084.0	3,074.6	-1,219.1	3,284.8	0.00	0.00	0.00	
9,500.0	90.00	358.30	6,084.0	3,124.6	-1,220.6	3,333.5	0.00	0.00	0.00	
9,550.0	90.00	358.30	6,084.0	3,174.6	-1,222.1	3,382.2	0.00	0.00	0.00	
9,600.0	90.00	358.30	6,084.0	3,224.6	-1,223.6	3,430.8	0.00	0.00	0.00	
9,650.0	90.00	358.30	6,084.0	3,274.5	-1,225.0	3,479.5	0.00	0.00	0.00	
9,700.0	90.00	358.30	6,084.0	3,324.5	-1,226.5	3,528.2	0.00	0.00	0.00	
9,750.0	90.00	358.30	6,084.0	3,374.5	-1,228.0	3,576.9	0.00	0.00	0.00	
9,800.0	90.00	358.30	6,084.0	3,424.5	-1,229.5	3,625.5	0.00	0.00	0.00	
9,850.0	90.00	358.30	6,084.0	3,474.4	-1,231.0	3,674.2	0.00	0.00	0.00	
9,900.0	90.00	358.30	6,084.0	3,524.4	-1,232.5	3,722.9	0.00	0.00	0.00	
9,950.0	90.00	358.30	6,084.0	3,574.4	-1,233.9	3,771.6	0.00	0.00	0.00	
10,000.0	90.00	358.30	6,084.0	3,624.4	-1,235.4	3,820.2	0.00	0.00	0.00	
10,050.0	90.00	358.30	6,084.0	3,674.4	-1,236.9	3,868.9	0.00	0.00	0.00	
10,100.0	90.00	358.30	6,084.0	3,724.3	-1,238.4	3,917.6	0.00	0.00	0.00	
10,150.0	90.00	358.30	6,084.0	3,774.3	-1,239.9	3,966.3	0.00	0.00	0.00	
10,200.0	90.00	358.30	6,084.0	3,824.3	-1,241.3	4,015.0	0.00	0.00	0.00	
10,250.0	90.00	358.30	6,084.0	3,874.3	-1,242.8	4,063.6	0.00	0.00	0.00	
10,300.0	90.00	358.30	6,084.0	3,924.3	-1,244.3	4,112.3	0.00	0.00	0.00	
10,350.0	90.00	358.30	6,084.0	3,974.2	-1,245.8	4,161.0	0.00	0.00	0.00	
10,400.0	90.00	358.30	6,084.0	4,024.2	-1,247.3	4,209.7	0.00	0.00	0.00	
10,450.0	90.00	358.30	6,084.0	4,074.2	-1,248.8	4,258.3	0.00	0.00	0.00	
10,500.0	90.00	358.30	6,084.0	4,124.2	-1,250.2	4,307.0	0.00	0.00	0.00	
10,550.0	90.00	358.30	6,084.0	4,174.1	-1,251.7	4,355.7	0.00	0.00	0.00	
10,600.0	90.00	358.30	6,084.0	4,224.1	-1,253.2	4,404.4	0.00	0.00	0.00	

Planning Report

Database:	EDM01P	Local Co-ordinate Reference:	Well Riley LD19-752
Company:	Northern Region Drilling - Working	TVD Reference:	WELL @ 4850.0ft (Original Well Elev)
Project:	Wattenberg Field	MD Reference:	WELL @ 4850.0ft (Original Well Elev)
Site:	LD (09N-58W)	North Reference:	Grid
Well:	Riley LD19-752	Survey Calculation Method:	Minimum Curvature
Wellbore:	Original Drilling		
Design:	APD - Rev 1		

Planned Survey										
Measured Depth (ft)	Inclination (°)	Azimuth (°)	Vertical Depth (ft)	+N/-S (ft)	+E/-W (ft)	Vertical Section (ft)	Dogleg Rate (°/100usft)	Build Rate (°/100usft)	Turn Rate (°/100usft)	
10,650.0	90.00	358.30	6,084.0	4,274.1	-1,254.7	4,453.0	0.00	0.00	0.00	
10,700.0	90.00	358.30	6,084.0	4,324.1	-1,256.2	4,501.7	0.00	0.00	0.00	
10,750.0	90.00	358.30	6,084.0	4,374.1	-1,257.6	4,550.4	0.00	0.00	0.00	
10,800.0	90.00	358.30	6,084.0	4,424.0	-1,259.1	4,599.1	0.00	0.00	0.00	
10,850.0	90.00	358.30	6,084.0	4,474.0	-1,260.6	4,647.7	0.00	0.00	0.00	
10,900.0	90.00	358.30	6,084.0	4,524.0	-1,262.1	4,696.4	0.00	0.00	0.00	
10,950.0	90.00	358.30	6,084.0	4,574.0	-1,263.6	4,745.1	0.00	0.00	0.00	
11,000.0	90.00	358.30	6,084.0	4,623.9	-1,265.0	4,793.8	0.00	0.00	0.00	
11,050.0	90.00	358.30	6,084.0	4,673.9	-1,266.5	4,842.4	0.00	0.00	0.00	
11,100.0	90.00	358.30	6,084.0	4,723.9	-1,268.0	4,891.1	0.00	0.00	0.00	
11,141.4	90.00	358.30	6,084.0	4,765.3	-1,269.2	4,931.4	0.00	0.00	0.00	

Design Targets										
Target Name	Dip Angle (°)	Dip Dir. (°)	TVD (ft)	+N/-S (ft)	+E/-W (ft)	Northing (usft)	Easting (usft)	Latitude	Longitude	
- hit/miss target										
- Shape										
Section 19	0.00	0.00	-27.0	10,699.3	6,864.6	1,523,557.18	3,449,341.23	40.759270	-103.877940	
- plan misses target center by 11777.8ft at 11141.4ft MD (6084.0 TVD, 4765.3 N, -1269.2 E)										
- Polygon										
Point 1			-27.0	-5,858.2	-10,656.7	1,517,699.04	3,438,684.64			
Point 2			-27.0	-5,723.4	-5,364.0	1,517,833.84	3,443,977.29			
Point 3			-27.0	-11,036.8	-5,251.0	1,512,520.50	3,444,090.29			
Point 4			-27.0	-11,176.8	-10,508.5	1,512,380.50	3,438,832.84			
Point 5			-27.0	-5,858.2	-10,656.7	1,517,699.04	3,438,684.64			
Setback	0.00	0.00	-27.0	10,699.3	6,864.6	1,523,557.18	3,449,341.23	40.759270	-103.877940	
- plan misses target center by 11777.8ft at 11141.4ft MD (6084.0 TVD, 4765.3 N, -1269.2 E)										
- Polygon										
Point 1			-27.0	-6,058.2	-10,356.7	1,517,499.04	3,438,984.64			
Point 2			-27.0	-5,923.4	-5,664.0	1,517,633.84	3,443,677.29			
Point 3			-27.0	-10,736.8	-5,551.0	1,512,820.49	3,443,790.29			
Point 4			-27.0	-10,876.8	-10,208.5	1,512,680.49	3,439,132.84			
Point 5			-27.0	-6,058.2	-10,356.7	1,517,499.04	3,438,984.64			
Riley LD19-752 BHL 14C	0.00	0.00	6,084.0	4,765.3	-1,269.2	1,517,623.21	3,441,207.47	40.743390	-103.907680	
- plan hits target center										
- Point										

Planning Report

Database:	EDM01P	Local Co-ordinate Reference:	Well Riley LD19-752
Company:	Northern Region Drilling - Working	TVD Reference:	WELL @ 4850.0ft (Original Well Elev)
Project:	Wattenberg Field	MD Reference:	WELL @ 4850.0ft (Original Well Elev)
Site:	LD (09N-58W)	North Reference:	Grid
Well:	Riley LD19-752	Survey Calculation Method:	Minimum Curvature
Wellbore:	Original Drilling		
Design:	APD - Rev 1		

Formations						
Measured Depth (ft)	Vertical Depth (ft)	Name	Lithology	Dip (°)	Dip Direction (°)	
818.0	818.0	PIERRE		0.00		
877.0	877.0	UPPER PIERRE AQUIFER TOP		0.00		
1,462.0	1,462.0	UPPER PIERRE AQUIFER BASE		0.00		
3,445.2	3,398.0	PARKMAN		0.00		
4,011.9	3,940.0	SUSSEX		0.00		
4,605.9	4,508.0	SHANNON		0.00		
5,244.8	5,119.0	TEEPEE BUTTES		0.00		
5,916.8	5,749.0	SHARON SPRINGS		0.00		
5,945.4	5,773.0	NIO A CHALK		0.00		
5,982.2	5,803.0	NIO A MARL		0.00		
6,067.2	5,868.0	NIO B CHALK		0.00		
6,112.6	5,900.0	NIO B MARL		0.00		
6,185.9	5,947.0	NIO C CHALK		0.00		
6,249.9	5,983.0	NIO C MARL		0.00		
6,362.7	6,034.0	NIO D CHALK		0.00		
6,432.6	6,057.0	FT. HAYES		0.00		
6,550.7	6,080.0	CODELL		0.00		

Plan Annotations					
Measured Depth (ft)	Vertical Depth (ft)	Local Coordinates			
		+N/-S (ft)	+E/-W (ft)	Comment	
1,800.0	1,800.0	0.0	0.0	KOP - Start Build 2.00	
5,521.9	5,384.0	-377.0	-888.1	Start DLS 8.94 TFO 12.78	
5,546.3	5,407.2	-379.9	-895.1	Start DLS 8.94 TFO 108.80	
6,245.0	5,980.4	-106.2	-1,090.5	TPZ	
11,141.4	6,084.0	4,765.3	-1,269.2	TD at 11141.4	

Northern Region Drilling - Working

**Wattenberg Field
LD (09N-58W)
Riley LD19-752**

**Original Drilling
APD - Rev 1**

Anticollision Summary Report

20 May, 2016

Anticollision Summary Report

Company:	Northern Region Drilling - Working	Local Co-ordinate Reference:	Well Riley LD19-752
Project:	Wattenberg Field	TVD Reference:	WELL @ 4850.0ft (Original Well Elev)
Reference Site:	LD (09N-58W)	MD Reference:	WELL @ 4850.0ft (Original Well Elev)
Site Error:	0.0 ft	North Reference:	Grid
Reference Well:	Riley LD19-752	Survey Calculation Method:	Minimum Curvature
Well Error:	0.0 ft	Output errors are at	2.00 sigma
Reference Wellbore	Original Drilling	Database:	EDM01P
Reference Design:	APD - Rev 1	Offset TVD Reference:	Offset Datum

Reference	APD - Rev 1		
Filter type:	NO GLOBAL FILTER: Using user defined selection & filtering criteria		
Interpolation Method:	MD Interval 50.0ft	Error Model:	ISCWSA
Depth Range:	Unlimited	Scan Method:	Closest Approach 3D
Results Limited by:	Maximum center-center distance of 10,000.0 ft	Error Surface:	Elliptical Conic
Warning Levels Evaluated at:	2.00 Sigma	Casing Method:	Not applied

Survey Tool Program	Date	5/20/2016		
From (ft)	To (ft)	Survey (Wellbore)	Tool Name	Description
0.0	11,141.4	APD - Rev 1 (Original Drilling)	MWD	MWD - Standard

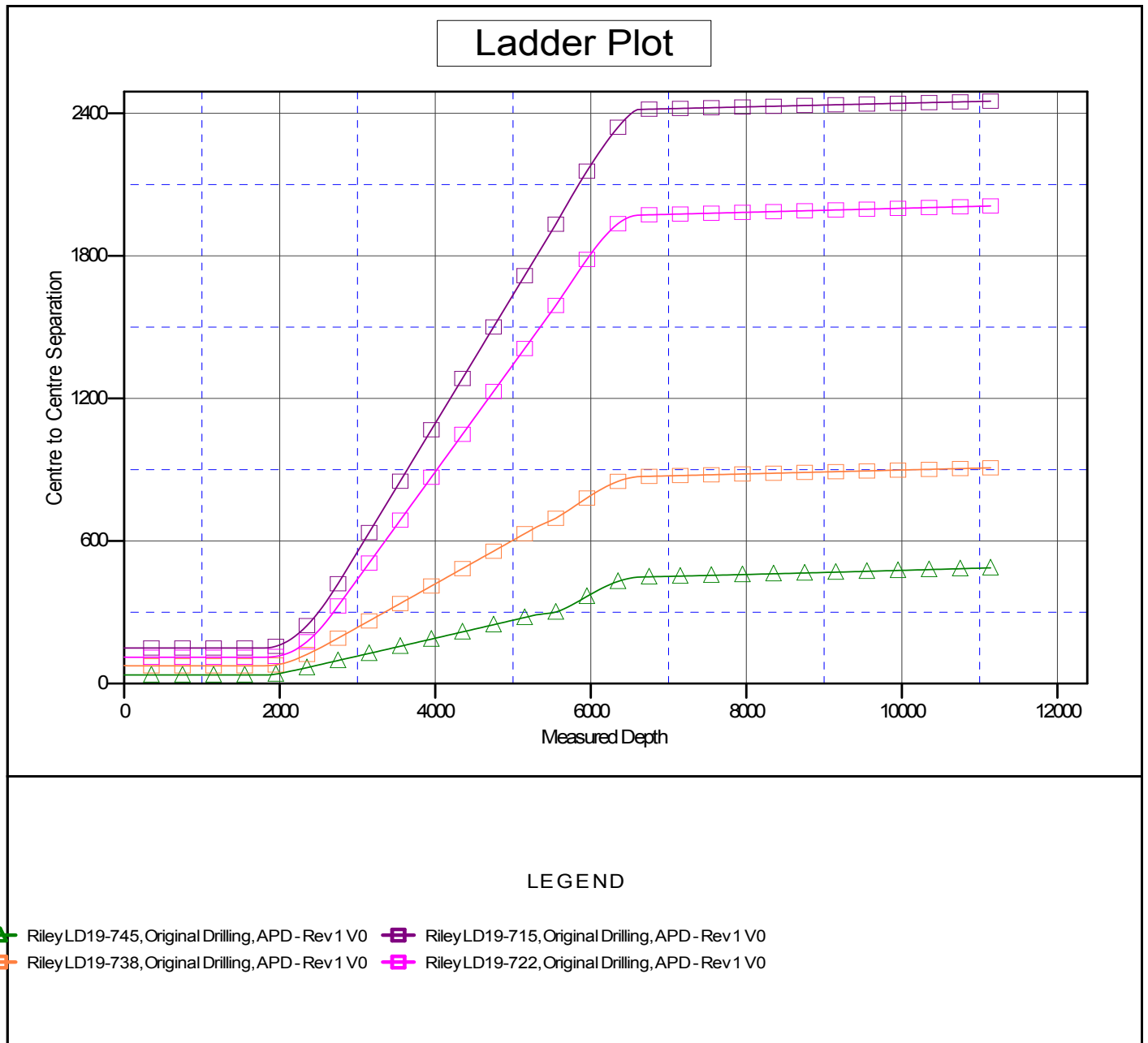
Summary						
Site Name	Reference Measured Depth (ft)	Offset Measured Depth (ft)	Distance Between Centres (ft)	Distance Between Ellipses (ft)	Separation Factor	Warning
Offset Well - Wellbore - Design						
LD (09N-58W)						
Riley LD19-715 - Original Drilling - APD - Rev 1	1,800.0	1,800.0	149.7	141.9	19.189	CC, ES
Riley LD19-715 - Original Drilling - APD - Rev 1	11,141.4	10,975.4	2,451.2	2,262.1	12.964	SF
Riley LD19-722 - Original Drilling - APD - Rev 1	1,800.0	1,789.0	110.9	103.1	14.237	CC, ES
Riley LD19-722 - Original Drilling - APD - Rev 1	11,141.4	10,898.2	2,010.1	1,823.3	10.759	SF
Riley LD19-738 - Original Drilling - APD - Rev 1	1,800.0	1,789.0	74.8	67.0	9.610	CC, ES
Riley LD19-738 - Original Drilling - APD - Rev 1	11,141.4	10,874.3	908.1	722.6	4.896	SF
Riley LD19-745 - Original Drilling - APD - Rev 1	1,800.0	1,800.0	36.0	28.2	4.620	CC, ES
Riley LD19-745 - Original Drilling - APD - Rev 1	11,141.4	10,906.3	487.2	310.8	2.762	SF

Anticollision Summary Report

Company:	Northern Region Drilling - Working	Local Co-ordinate Reference:	Well Riley LD19-752
Project:	Wattenberg Field	TVD Reference:	WELL @ 4850.0ft (Original Well Elev)
Reference Site:	LD (09N-58W)	MD Reference:	WELL @ 4850.0ft (Original Well Elev)
Site Error:	0.0 ft	North Reference:	Grid
Reference Well:	Riley LD19-752	Survey Calculation Method:	Minimum Curvature
Well Error:	0.0 ft	Output errors are at	2.00 sigma
Reference Wellbore	Original Drilling	Database:	EDM01P
Reference Design:	APD - Rev 1	Offset TVD Reference:	Offset Datum

Reference Depths are relative to WELL @ 4850.0ft (Original Well Elev)
Offset Depths are relative to Offset Datum
Central Meridian is -105.500000

Coordinates are relative to: Riley LD19-752
Coordinate System is US State Plane 1983, Colorado Northern Zone
Grid Convergence at Surface is: 1.03°



Anticollision Summary Report

Company:	Northern Region Drilling - Working	Local Co-ordinate Reference:	Well Riley LD19-752
Project:	Wattenberg Field	TVD Reference:	WELL @ 4850.0ft (Original Well Elev)
Reference Site:	LD (09N-58W)	MD Reference:	WELL @ 4850.0ft (Original Well Elev)
Site Error:	0.0 ft	North Reference:	Grid
Reference Well:	Riley LD19-752	Survey Calculation Method:	Minimum Curvature
Well Error:	0.0 ft	Output errors are at	2.00 sigma
Reference Wellbore	Original Drilling	Database:	EDM01P
Reference Design:	APD - Rev 1	Offset TVD Reference:	Offset Datum

Reference Depths are relative to WELL @ 4850.0ft (Original Well Elev)
 Offset Depths are relative to Offset Datum
 Central Meridian is -105.500000

Coordinates are relative to: Riley LD19-752
 Coordinate System is US State Plane 1983, Colorado Northern Zone
 Grid Convergence at Surface is: 1.03°

